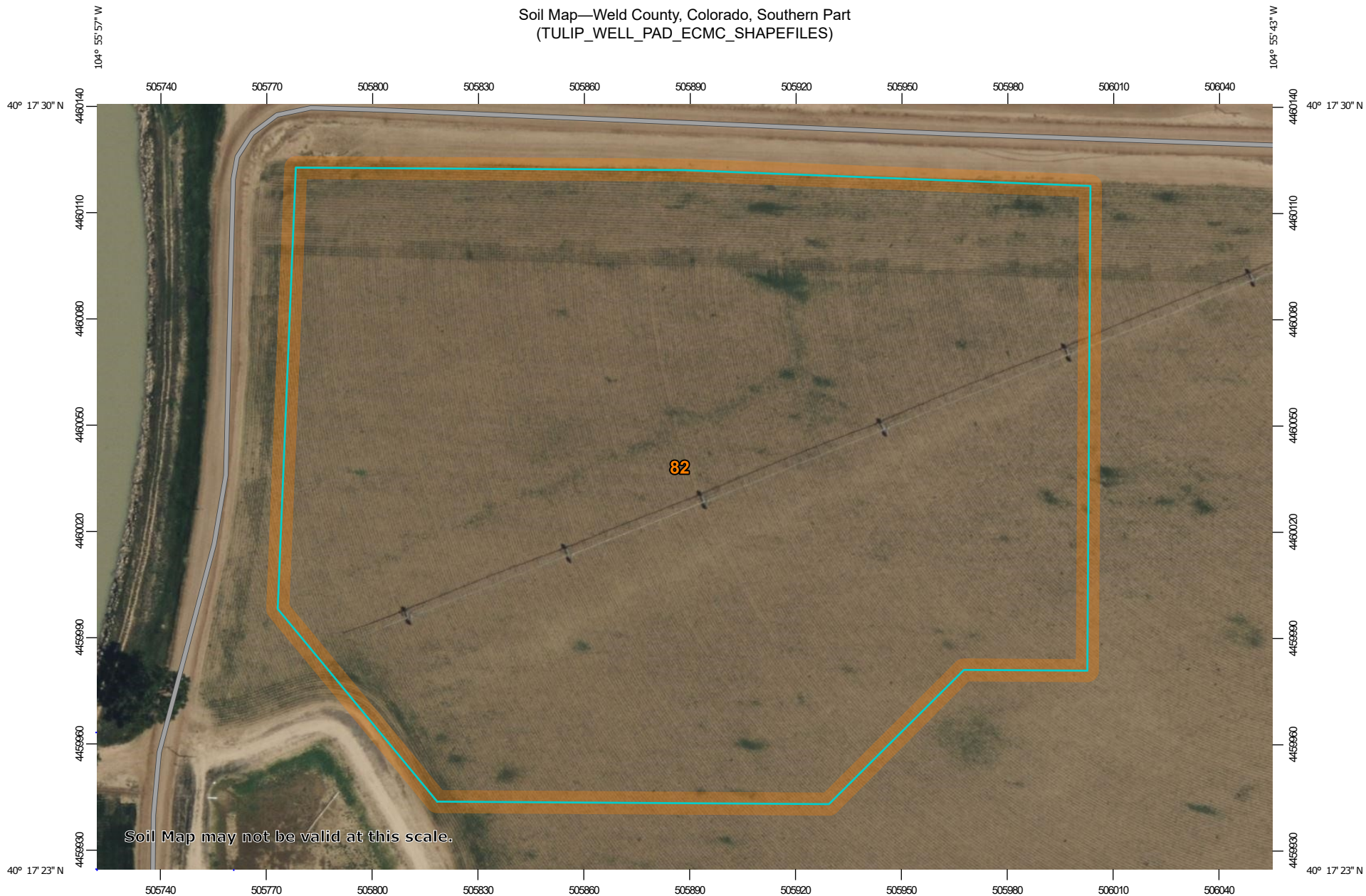
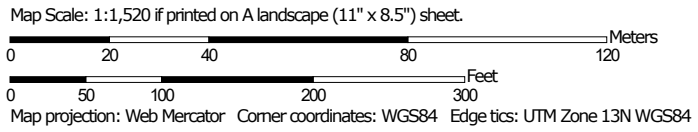


Soil Map—Weld County, Colorado, Southern Part
(TULIP_WELL_PAD_ECMC_SHAPEFILES)




Soil Map may not be valid at this scale.



MAP LEGEND

Area of Interest (AOI)

 Area of Interest (AOI)

Soils

 Soil Map Unit Polygons

 Soil Map Unit Lines

 Soil Map Unit Points

Special Point Features



Blowout



Borrow Pit



Clay Spot



Closed Depression



Gravel Pit



Gravelly Spot



Landfill



Lava Flow



Marsh or swamp



Mine or Quarry



Miscellaneous Water



Perennial Water



Rock Outcrop



Saline Spot



Sandy Spot



Severely Eroded Spot



Sinkhole



Slide or Slip



Sodic Spot



Spoil Area



Stony Spot



Very Stony Spot



Wet Spot



Other



Special Line Features

Water Features



Streams and Canals

Transportation



Rails



Interstate Highways



US Routes



Major Roads



Local Roads

Background



Aerial Photography

MAP INFORMATION

The soil surveys that comprise your AOI were mapped at 1:24,000.

Warning: Soil Map may not be valid at this scale.

Enlargement of maps beyond the scale of mapping can cause misunderstanding of the detail of mapping and accuracy of soil line placement. The maps do not show the small areas of contrasting soils that could have been shown at a more detailed scale.

Please rely on the bar scale on each map sheet for map measurements.

Source of Map: Natural Resources Conservation Service

Web Soil Survey URL:

Coordinate System: Web Mercator (EPSG:3857)

Maps from the Web Soil Survey are based on the Web Mercator projection, which preserves direction and shape but distorts distance and area. A projection that preserves area, such as the Albers equal-area conic projection, should be used if more accurate calculations of distance or area are required.

This product is generated from the USDA-NRCS certified data as of the version date(s) listed below.

Soil Survey Area: Weld County, Colorado, Southern Part

Survey Area Data: Version 22, Aug 24, 2023

Soil map units are labeled (as space allows) for map scales 1:50,000 or larger.

Date(s) aerial images were photographed: Jun 8, 2021—Jun 12, 2021

The orthophoto or other base map on which the soil lines were compiled and digitized probably differs from the background imagery displayed on these maps. As a result, some minor shifting of map unit boundaries may be evident.

Map Unit Legend

Map Unit Symbol	Map Unit Name	Acres in AOI	Percent of AOI
82	Wiley-Colby complex, 1 to 3 percent slopes	9.2	100.0%
Totals for Area of Interest		9.2	100.0%

Weld County, Colorado, Southern Part

82—Wiley-Colby complex, 1 to 3 percent slopes

Map Unit Setting

National map unit symbol: 3643
Elevation: 4,850 to 5,000 feet
Mean annual precipitation: 12 to 16 inches
Mean annual air temperature: 48 to 54 degrees F
Frost-free period: 135 to 170 days
Farmland classification: Prime farmland if irrigated

Map Unit Composition

Wiley and similar soils: 60 percent
Colby and similar soils: 30 percent
Minor components: 10 percent
Estimates are based on observations, descriptions, and transects of the mapunit.

Description of Wiley

Setting

Landform: Plains
Down-slope shape: Linear
Across-slope shape: Linear
Parent material: Calcareous eolian deposits

Typical profile

H1 - 0 to 11 inches: silt loam
H2 - 11 to 60 inches: silty clay loam
H3 - 60 to 64 inches: silty clay loam

Properties and qualities

Slope: 1 to 3 percent
Depth to restrictive feature: More than 80 inches
Drainage class: Well drained
Runoff class: Low
Capacity of the most limiting layer to transmit water (Ksat): Moderately high to high (0.60 to 2.00 in/hr)
Depth to water table: More than 80 inches
Frequency of flooding: None
Frequency of ponding: None
Calcium carbonate, maximum content: 15 percent
Maximum salinity: Nonsaline to very slightly saline (0.0 to 2.0 mmhos/cm)
Available water supply, 0 to 60 inches: High (about 11.7 inches)

Interpretive groups

Land capability classification (irrigated): 2e
Land capability classification (nonirrigated): 4e
Hydrologic Soil Group: B
Ecological site: R067BY002CO - Loamy Plains

Hydric soil rating: No

Description of Colby

Setting

Landform: Plains
Down-slope shape: Linear
Across-slope shape: Linear
Parent material: Calcareous eolian deposits

Typical profile

H1 - 0 to 7 inches: loam
H2 - 7 to 60 inches: silt loam

Properties and qualities

Slope: 1 to 3 percent
Depth to restrictive feature: More than 80 inches
Drainage class: Well drained
Runoff class: Low
Capacity of the most limiting layer to transmit water (Ksat): Moderately high to high (0.57 to 2.00 in/hr)
Depth to water table: More than 80 inches
Frequency of flooding: None
Frequency of ponding: None
Calcium carbonate, maximum content: 15 percent
Available water supply, 0 to 60 inches: High (about 10.6 inches)

Interpretive groups

Land capability classification (irrigated): 3e
Land capability classification (nonirrigated): 4e
Hydrologic Soil Group: B
Ecological site: R067BY002CO - Loamy Plains
Hydric soil rating: No

Minor Components

Heldt

Percent of map unit: 4 percent
Hydric soil rating: No

Weld

Percent of map unit: 4 percent
Hydric soil rating: No

Keith

Percent of map unit: 2 percent
Hydric soil rating: No

Data Source Information

Soil Survey Area: Weld County, Colorado, Southern Part
Survey Area Data: Version 22, Aug 24, 2023