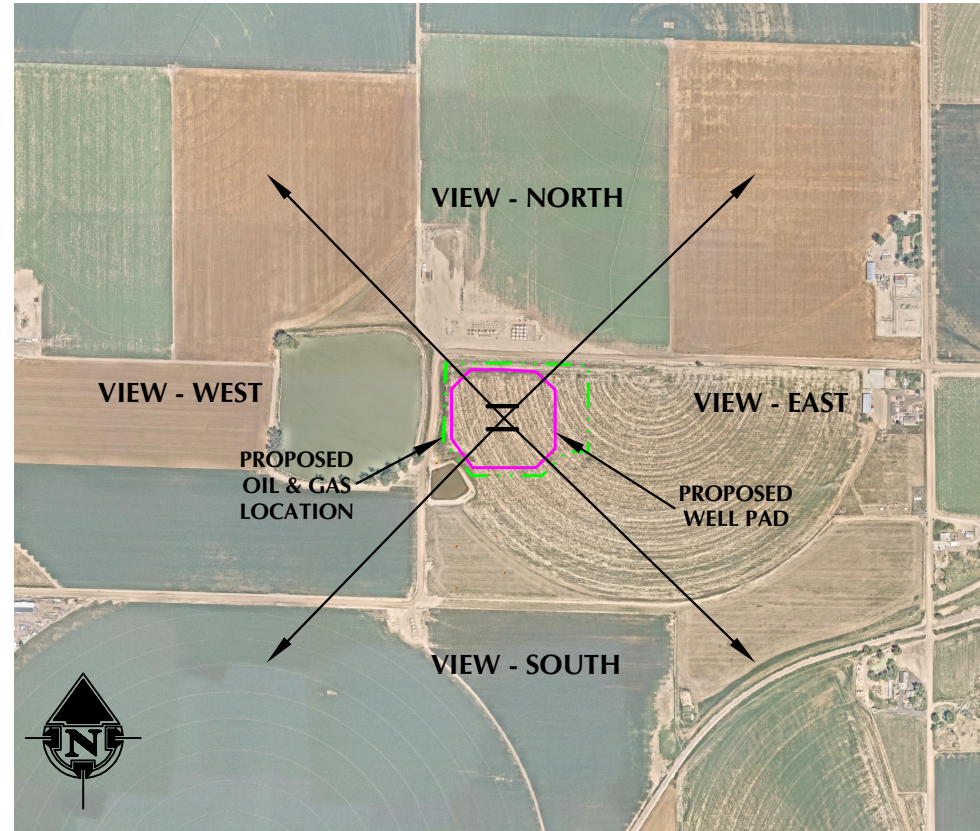


**WELL PAD LOCATION PICTURES  
TULIP WELL PAD**

NW1/4 NE1/4 SECTION 30, TOWNSHIP 4 NORTH, RANGE 67 WEST, 6TH P.M., WELD COUNTY, COLORADO



LOCATION PICTURE OF TULIP WELL PAD - CAMERA VIEW NORTH



VIEW - OVERHEAD  
AERIAL IMAGERY COURTESY OF NEARMAP  
2023-07-27



LOCATION PICTURE OF TULIP WELL PAD - CAMERA VIEW EAST



LOCATION PICTURE OF TULIP WELL PAD - CAMERA VIEW SOUTH



LOCATION PICTURE OF TULIP WELL PAD - CAMERA VIEW WEST

K:\AMDRK\2018\219\_TULIP\_INVGEN\_8\_OLSON\_THM\_R67W\_SEC\_30\DWG\TULIP\_THM\_R67W\_SEC\_30.DWG, 4/29/2024 11:43:39 PM, sundberg



LOVELAND OFFICE  
6706 North Franklin Avenue  
Loveland, Colorado 80538  
Phone 970-776-4331

SHERIDAN OFFICE  
1095 Saberton Avenue  
Sheridan, Wyoming 82801  
Phone 307-674-0609

**CONSULTING, LLC**

**Kerr-McGee Oil &  
Gas Onshore LP**  
1099 18th Street  
Denver, Colorado 80202

DATE SURVEYED: 3/21/24  
DATE: 4/30/24  
DRAFTER: CJF  
REVISED:

DATA SOURCES:  
-AERIAL IMAGERY COURTESY OF NEARMAP.