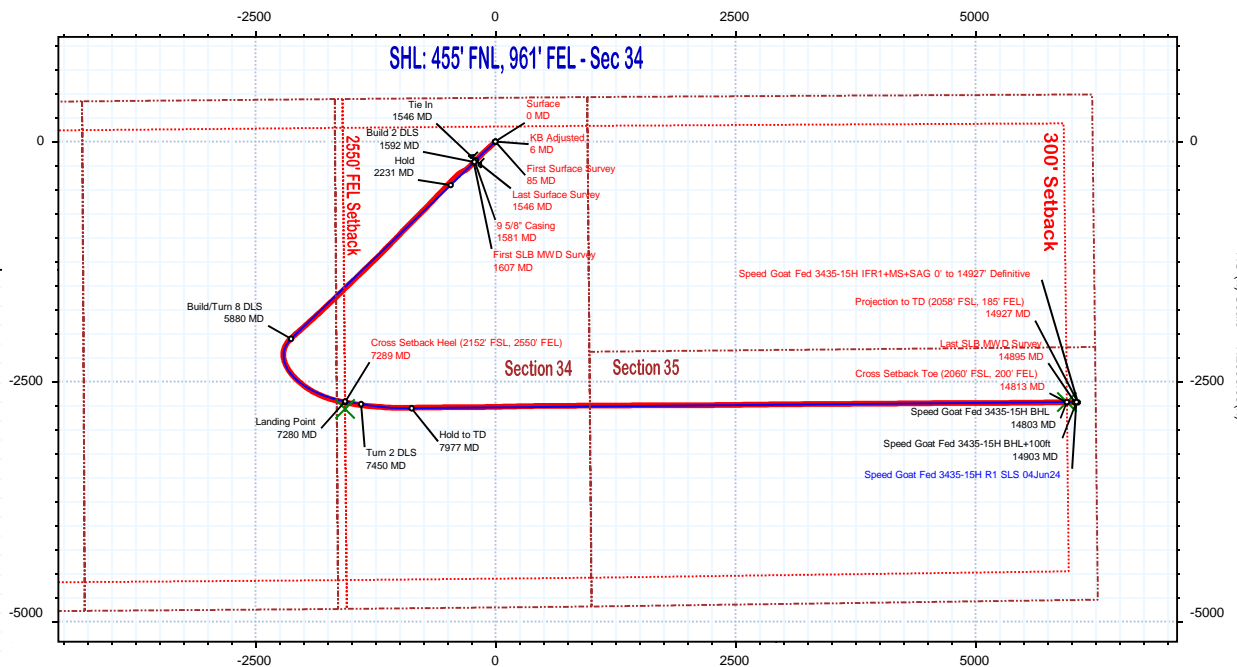
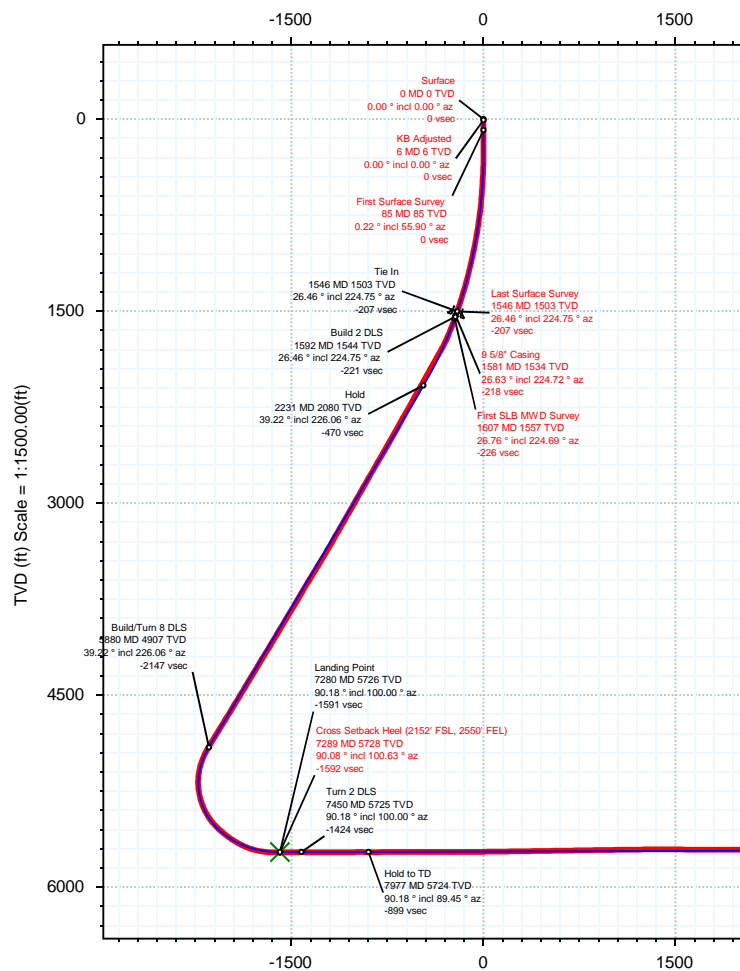
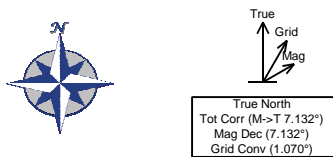


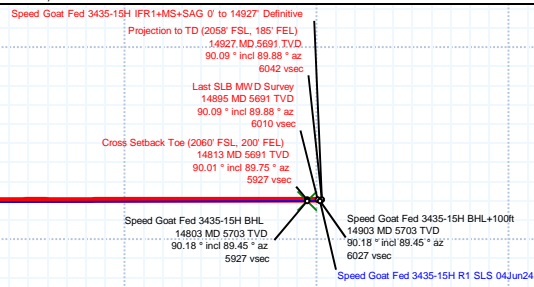
<b>Borehole:</b> Speed Goat Fed 3435-15H	<b>Well:</b> Speed Goat Fed 3435-15H	<b>Field:</b> CO, Weld County (NAD 83 NZ) - 2019	<b>Structure:</b> Verdad Resources 34-09N-58W (Speed Goat 3432-3435 Pad)
---	---	---	---

<b>Gravity &amp; Magnetic Parameters</b>	<b>Surface Location</b>	<b>Miscellaneous</b>
Model: HDGM 2024 MagDec: 7.132°	NAD83 Colorado State Plane, Northern Zone, US Feet Lat: N 40 42 49.43 Lon: W 103 50 37.63	Speed Goat Fed 3435-15H Plan: Speed Goat Fed 3435-15H IFR1+MS+SAG 0' to 14927' Definitive
Dip: 66.858° Date: 04-Apr-2024 FS: 51840.926nT Gravity FS: 999.096mg (9.80665 Based)	Northing: 1507143.74ftUS Easting: 3459111.31ftUS Grid Conv: 1.0701° Scale Fact: 0.99998945	TVD Ref: RKB = 21ft(4743ft above Mean Sea Level)

EW (ft) Scale = 1:2000.00(ft)



Critical Point	MD	INCL	AZIM	TVD	VSEC	N(+)/S(-)	E(+)/W(-)	DLS
Surface	0.00	0.00	0.00	0.00	0.00	0.00	0.00	
KB Adjusted	6.00	0.00	0.00	6.00	0.00	0.00	0.00	0.00
First Surface Survey	85.00	0.22	55.90	85.00	0.13	0.09	0.00	0.28
Last Surface Survey	1546.00	26.46	224.75	1502.95	-206.60	-197.93	-204.70	2.49
9 5/8" Casing	1581.00	26.63	224.72	1534.26	-217.71	-209.05	-215.71	0.49
First SLB MWD Survey	1607.00	26.76	224.69	1557.49	-226.01	-217.35	-223.93	0.49
Cross Setback Heel (2152' FSL, 2550' FEL)	7288.89	90.08	100.63	5728.47	-1591.86	-2717.07	-1565.85	0.68
Cross Setback Toe (2060' FSL, 200' FEL)	14812.51	90.01	89.75	5691.14	5927.03	-2717.28	5953.39	0.55
Last SLB MWD Survey	14895.00	90.09	89.88	5691.17	6009.52	-2717.13	6035.88	0.53
Projection to TD (2058' FSL, 185' FEL)	14927.00	90.09	89.88	5691.12	6041.51	-2717.06	6067.88	0.00



Vertical Section (ft) Azim = 89.45° Scale = 1:1500.00(ft) Origin = 0N/-S, 0E/-W



# Speed Goat Fed 3435-15H IFR1+MS+SAG 0' to 14927' Definitive Survey

## Geodetic Report

(Def Survey)



**Report Date:** June 24, 2024 - 02:51 PM  
**Client:** Verdad Resources  
**Field:** CO, Weld County (NAD 83 NZ) - 2019  
**Structure / Slot:** Verdad Resources 34-09N-58W (Speed Goat 3432-3435 Pad) / Speed Goat Fed 3435-15H  
**Well:** Speed Goat Fed 3435-15H  
**Borehole:** Speed Goat Fed 3435-15H  
**UWI / API#:** Unknown / 05-123-52502  
**Survey Name:** Speed Goat Fed 3435-15H IFR1+MS+SAG 0' to 14927' Definitive  
**Survey Date:** May 08, 2024  
**Tort / AHD / DDI / ERD Ratio:** 251.779 ° / 11660.007 ft / 6.884 / 2.035  
**Coordinate Reference System:** NAD83 Colorado State Plane, Northern Zone, US Feet  
**Location Lat / Long:** N 40° 42' 49.43163", W 103° 50' 37.62962"  
**Location Grid N/E Y/X:** N 1507143.740 ftUS, E 3459111.310 ftUS  
**CRS Grid Convergence Angle:** 1.0701 °  
**Grid Scale Factor:** 0.99998945  
**Version / Patch:** 2.10.836.0

**Survey / DLS Computation:** Minimum Curvature / Lubinski  
**Vertical Section Azimuth:** 89.450 ° (True North)  
**Vertical Section Origin:** 0.000 ft, 0.000 ft  
**TVD Reference Datum:** RKB = 21ft  
**TVD Reference Elevation:** 4743.000 ft above Mean Sea Level  
**Seabed / Ground Elevation:** 4722.000 ft above Mean Sea Level  
**Magnetic Declination:** 7.132 °  
**Total Gravity Field Strength:** 999.0960mgn (9.80665 Based)  
**Gravity Model:** GARM  
**Total Magnetic Field Strength:** 51840.926 nT  
**Magnetic Dip Angle:** 66.858 °  
**Declination Date:** April 04, 2024  
**Magnetic Declination Model:** HDGM 2024  
**North Reference:** True North  
**Grid Convergence Used:** 0.0000 °  
**Total Corr Mag North→True North:** 7.1316 °  
**Local Coord Referenced To:** Well Head

Comments	MD (ft)	Incl (°)	Azim True (°)	TVD (ft)	VSEC (ft)	NS (ft)	EW (ft)	DLS (°/100ft)	Northing (ftUS)	Easting (ftUS)	Latitude (°)	Longitude (°)
Surface	0.00	0.00	0.00	0.00	0.00	0.00	0.00	N/A	1507143.74	3459111.31	40.713731	-103.843786
KB Adjusted	6.00	0.00	0.00	6.00	0.00	0.00	0.00	0.00	1507143.74	3459111.31	40.713731	-103.843786
First Surface Survey	85.00	0.22	55.90	85.00	0.13	0.09	0.13	0.28	1507143.83	3459111.43	40.713731	-103.843786
	176.00	0.53	336.19	176.00	0.11	0.57	0.10	0.59	1507144.31	3459111.40	40.713733	-103.843786
	267.00	0.48	314.84	266.99	-0.33	1.22	-0.34	0.21	1507144.96	3459110.95	40.713734	-103.843787
	358.00	2.11	229.85	357.97	-1.89	0.41	-1.89	2.33	1507144.12	3459109.41	40.713732	-103.843793
	448.00	4.61	220.88	447.81	-5.56	-3.39	-5.52	2.83	1507140.24	3459105.85	40.713722	-103.843806
	537.00	5.58	220.35	536.46	-10.76	-9.40	-10.67	1.09	1507134.15	3459100.82	40.713705	-103.843824
	627.00	7.56	221.23	625.86	-17.57	-17.18	-17.40	2.20	1507126.24	3459094.23	40.713684	-103.843849
	716.00	9.93	223.87	713.82	-26.84	-27.12	-26.58	2.70	1507116.13	3459085.24	40.713657	-103.843882
	806.00	10.77	225.89	802.36	-38.37	-38.57	-38.00	1.02	1507104.47	3459074.04	40.713625	-103.843923
	895.00	12.30	229.58	889.56	-51.67	-50.50	-51.19	1.91	1507092.29	3459061.08	40.713592	-103.843971
	984.00	14.24	229.41	976.18	-67.33	-63.77	-66.72	2.18	1507078.73	3459045.80	40.713556	-103.844027
	1074.00	15.60	227.56	1063.14	-84.81	-79.14	-84.05	1.60	1507063.04	3459028.75	40.713514	-103.844089
	1163.00	17.80	228.42	1148.38	-103.98	-96.25	-103.06	2.49	1507045.59	3459010.06	40.713467	-103.844158
	1253.00	19.29	224.57	1233.71	-124.90	-115.97	-123.79	2.14	1507025.48	3458989.71	40.713413	-103.844233
	1342.00	22.37	224.92	1316.88	-147.39	-138.44	-146.07	3.46	1507002.60	3458967.85	40.713351	-103.844313
	1431.00	23.69	224.22	1398.79	-172.06	-163.25	-170.50	1.51	1506977.34	3458943.89	40.713283	-103.844401
	1521.00	25.84	224.84	1480.51	-198.76	-190.12	-196.94	2.41	1506949.98	3458917.96	40.713209	-103.844496
Last Surface Survey	1546.00	26.46	224.75	1502.95	-206.60	-197.93	-204.70	2.49	1506942.02	3458910.34	40.713188	-103.844524
9 5/8" Casing	1581.00	26.63	224.72	1534.26	-217.71	-209.05	-215.71	0.49	1506930.70	3458899.54	40.713157	-103.844564
First SLB MWD Survey	1607.00	26.76	224.69	1557.49	-226.01	-217.35	-223.93	0.49	1506922.25	3458891.48	40.713134	-103.844594
	1696.00	28.51	224.72	1636.33	-255.33	-246.69	-252.97	1.97	1506892.37	3458863.00	40.713054	-103.844698
	1786.00	30.95	226.18	1714.48	-287.44	-277.98	-284.79	2.83	1506860.49	3458831.77	40.712968	-103.844813
	1875.00	31.07	244.81	1790.94	-325.07	-303.66	-322.17	10.75	1506834.12	3458794.87	40.712898	-103.844948
	1965.00	34.50	237.57	1866.62	-367.85	-327.23	-364.72	5.78	1506809.76	3458752.76	40.712833	-103.845102
	2054.00	37.00	225.89	1938.93	-408.71	-359.43	-405.28	8.15	1506776.81	3458712.82	40.712744	-103.845248
	2144.00	38.99	224.34	2009.85	-448.33	-398.53	-444.52	2.45	1506736.98	3458674.32	40.712637	-103.845389
	2232.00	38.65	222.99	2078.42	-486.79	-438.44	-482.61	1.04	1506696.37	3458636.98	40.712528	-103.845527
	2322.00	38.94	223.42	2148.56	-525.79	-479.54	-521.21	0.44	1506654.56	3458599.15	40.712415	-103.845666
	2411.00	38.91	223.77	2217.80	-564.74	-520.03	-559.77	0.25	1506613.35	3458561.36	40.712304	-103.845805
	2501.00	39.13	223.79	2287.72	-604.33	-560.95	-598.98	0.24	1506571.71	3458522.92	40.712191	-103.845947
	2590.00	38.46	222.75	2357.09	-642.94	-601.54	-637.20	1.05	1506530.41	3458485.46	40.712080	-103.846084
	2679.00	38.78	224.01	2426.63	-681.48	-641.91	-675.35	0.95	1506489.33	3458448.07	40.711969	-103.846222
	2769.00	39.00	224.37	2496.68	-721.26	-682.43	-714.74	0.35	1506448.09	3458409.45	40.711858	-103.846364
	2858.00	39.24	224.63	2565.73	-761.00	-722.48	-754.10	0.33	1506407.31	3458370.80	40.711748	-103.846506
	2948.00	39.24	224.71	2635.43	-801.41	-762.97	-794.12	0.06	1506366.08	3458331.59	40.711637	-103.846650
	3038.00	38.73	225.47	2705.39	-841.89	-802.94	-834.22	0.78	1506325.37	3458292.24	40.711527	-103.846795
	3127.00	38.77	225.15	2774.80	-881.87	-842.12	-873.82	0.23	1506285.46	3458253.38	40.711420	-103.846938
	3217.00	39.03	224.71	2844.84	-922.16	-882.13	-913.74	0.42	1506244.71	3458214.22	40.711310	-103.847082
	3306.00	38.84	223.55	2914.07	-961.49	-922.28	-952.68	0.85	1506203.84	3458176.03	40.711200	-103.847222
	3396.00	39.25	223.45	2983.97	-1000.91	-963.40	-991.70	0.46	1506162.00	3458137.78	40.711087	-103.847363
	3485.00	39.18	224.71	3052.93	-1040.43	-1003.82	-1030.85	0.90	1506120.86	3458099.40	40.710976	-103.847504
	3575.00	39.12	224.09	3122.72	-1080.58	-1044.42	-1070.60	0.44	1506079.52	3458060.41	40.710864	-103.847648
	3665.00	39.35	224.53	3192.43	-1120.73	-1085.15	-1110.37	0.40	1506038.06	3458021.42	40.710752	-103.847791
	3754.00	39.07	223.17	3261.39	-1160.10	-1125.72	-1149.34	1.02	1505996.76	3457983.21	40.710641	-103.847932
	3844.00	39.18	224.34	3331.22	-1199.76	-1166.74	-1188.62	0.83	1505955.02	3457944.70	40.710529	-103.848073
	3933.00	39.50	225.72	3400.05	-1240.06	-1206.61	-1228.53	1.05	1505914.41	3457905.54	40.710419	-103.848217
	4023.00	39.80	226.89	3469.35	-1281.96	-1246.28	-1270.05	0.89	1505873.97	3457864.77	40.710310	-103.848367
	4112.00	39.53	226.47	3537.86	-1323.66	-1285.25	-1311.38	0.43	1505834.24	3457824.17	40.710203	-103.848516
	4202.00	39.65	226.28	3607.21	-1365.56	-1324.83	-1352.90	0.19	1505793.90	3457783.40	40.710095	-103.848666
	4292.00	39.65	225.83	3676.51	-1407.29	-1364.68	-1394.25	0.32	1505753.28	3457742.81	40.709985	-103.848815
	4381.00	39.12	225.61	3745.30	-1448.10	-1404.11	-1434.68	0.62	1505713.10	3457703.12	40.709877	-103.848961
	4471.00	39.26	225.76	3815.05	-1489.17	-1443.84	-1475.37	0.19	1505672.62	3457663.18	40.709768	-103.849108
	4560.00	39.28	227.20	3883.96	-1530.38	-1482.63	-1516.22	1.02	1505633.07	3457623.06	40.709661	-103.849255
	4650.00	39.47	226.19	3953.53	-1572.31	-1521.79	-1557.77	0.74	1505593.15	3457582.25	40.709554	-103.849405
	4739.00	39.59	226.25	4022.17	-1613.58	-1560.98	-1598.67	0.14	1505553.20	3457542.09	40.709446	-103.849552
	4829.00	39.59	225.08	4091.53	-1654.99	-1601.06	-1639.69	0.83	1505512.36	3457501.83	40.709336	-103.849700
	4919.00	39.62	226.42	4160.87	-1696.46	-1641.09	-1680.79	0.95	1505471.56	3457461.49	40.709226	-103.849849
	5008.00	39.74	225.93	4229.37	-1737.84	-1680.44	-1721.78	0.38	1505431.45	3457421.23	40.709118	-103.849996
	5098.00	39.27	227.12	4298.81	-1779.76	-1719.84	-1763.33	0.99	1505391.29	3457380.43	40.709010	-103.850146
	5187.00	39.54	227.12	4367.58	-1821.52	-1758.22	-1804.73	0.30	1505352.08	3457339.76	40.708905	-103.850296
	5277.00	39.01	227.23	4437.25	-1863.68	-1797.01	-1846.51	0.59	1505312.58	3457298.70	40.708798	-103.850446
	5367.00	38.91	228.62	4507.23	-1906.04	-1834.93	-1888.52	0.98	1505273.88	3457257.42	40.708694	-103.850598
	5456.00	39.10	227.38	4576.39	-1948.03	-1872.41	-1930.14	0.90	1505235.63	3457216.50	40.708591	-103.850748
	5546.00	38.95	227.88	4646.31	-1990.26	-1910.60	-1972.01	0.39	1505196.67	3457175.35	40.708487	-103.850899
	5635.00	39.31	228.25	4715.35	-2032.40	-1948.14	-2013.79	0.48	1505158.36	3457134.28	40.708384	-103.851050
	5725.00	39.00	228.22	4785.14	-2075.15	-1985.99	-2056.18	0.35	1505119.72	3457092.61	40.708280	-103.851202
	5814.00	39.10	228.64	4854.26	-2117.45	-2023.19	-2098.13	0.32	1505081.74	3457051.36	40.708178	-103.851354
	5904.00	38.73	224.66	4924.30	-2158.92	-2061.98	-2139.22	2.81	1505042.20	3457011.00	40.708071	-103.851502
	5994.00	36.85	212.49	4995.52	-2193.67	-2104.83	-2173.56	8.53	1504998.71	3456977.46	40.707954	-103.851626
	6083.00	33.98	199.64	5068.14	-2216.84	-2150.84	-2196.29	8.95				

Comments	MD (ft)	Incl (°)	Azim True (°)	TVD (ft)	VSEC (ft)	NS (ft)	EW (ft)	DLS (°/100ft)	Northing (ftUS)	Easting (ftUS)	Latitude (°)	Longitude (°)
	6441.00	39.88	152.18	5361.82	-2194.88	-2347.32	-2172.45	6.94	1504756.28	3456983.11	40.707288	-103.851622
	6530.00	45.10	144.15	5427.48	-2163.55	-2398.18	-2140.62	8.45	1504706.03	3457015.88	40.707148	-103.851507
	6619.00	49.88	137.64	5487.63	-2122.60	-2448.93	-2099.19	7.61	1504656.06	3457058.25	40.707009	-103.851357
	6709.00	55.12	131.36	5542.44	-2072.12	-2498.82	-2048.22	8.03	1504607.13	3457110.14	40.706872	-103.851174
	6799.00	57.98	127.30	5592.06	-2014.49	-2546.36	-1990.14	4.93	1504560.69	3457169.10	40.706742	-103.850964
	6888.00	61.89	121.29	5636.67	-1951.28	-2589.65	-1926.51	7.31	1504518.59	3457233.52	40.706623	-103.850735
	6977.00	66.81	115.89	5675.20	-1881.23	-2627.95	-1856.09	7.77	1504481.62	3457304.65	40.706518	-103.850481
	7067.00	74.62	110.84	5704.92	-1803.63	-2661.52	-1778.16	10.16	1504449.51	3457383.19	40.706426	-103.850199
	7156.00	82.54	105.49	5722.54	-1721.08	-2688.63	-1695.35	10.67	1504423.95	3457466.49	40.706351	-103.849901
	7246.00	89.91	100.87	5728.47	-1633.92	-2709.07	-1607.99	9.66	1504405.15	3457554.21	40.706295	-103.849586
Cross Setback Heel (2152' FSL, 2550' FEL)	7288.89	90.08	100.63	5728.47	-1591.86	-2717.07	-1565.85	0.68	1504397.93	3457596.49	40.706273	-103.849434
	7335.00	90.27	100.38	5728.33	-1546.61	-2725.48	-1520.52	0.68	1504390.37	3457641.98	40.706250	-103.849270
	7425.00	90.23	99.79	5727.93	-1458.16	-2741.24	-1431.91	0.66	1504376.27	3457730.86	40.706207	-103.848951
	7515.00	90.07	94.93	5727.70	-1369.04	-2752.76	-1342.68	5.40	1504366.41	3457820.29	40.706175	-103.848629
	7604.00	90.02	94.98	5727.63	-1280.45	-2760.45	-1254.01	0.08	1504360.38	3457909.09	40.706154	-103.848309
	7693.00	90.12	94.35	5727.52	-1191.82	-2767.69	-1165.31	0.72	1504354.80	3457997.91	40.706134	-103.847989
	7783.00	90.41	92.20	5727.10	-1102.03	-2772.83	-1075.46	2.41	1504351.34	3458087.84	40.706120	-103.847665
	7873.00	90.79	89.82	5726.16	-1012.07	-2774.42	-985.48	2.68	1504351.44	3458177.83	40.706116	-103.847340
	7962.00	89.35	89.21	5726.05	-923.07	-2773.66	-896.49	1.47	1504353.85	3458266.79	40.706118	-103.847019
	8052.00	90.65	88.95	5726.05	-833.08	-2772.22	-806.50	1.47	1504356.98	3458356.73	40.706122	-103.846695
	8141.00	90.43	88.89	5725.21	-744.09	-2770.54	-717.52	0.26	1504360.32	3458445.66	40.706127	-103.846374
	8231.00	89.98	89.66	5724.89	-654.09	-2769.40	-627.53	0.99	1504363.14	3458535.62	40.706130	-103.846049
	8320.00	90.48	89.75	5724.53	-565.09	-2768.94	-538.53	0.57	1504365.26	3458624.59	40.706131	-103.845728
	8410.00	89.59	89.22	5724.48	-475.09	-2768.14	-448.54	1.15	1504367.75	3458714.55	40.706133	-103.845404
	8499.00	89.76	89.68	5724.98	-386.09	-2767.28	-359.55	0.55	1504370.26	3458803.51	40.706135	-103.845083
	8588.00	90.29	89.96	5724.94	-297.09	-2767.00	-270.55	0.67	1504372.20	3458892.49	40.706136	-103.844762
	8678.00	89.95	89.73	5724.76	-207.10	-2766.76	-180.55	0.46	1504374.13	3458982.47	40.706137	-103.844437
	8767.00	90.22	88.63	5724.62	-118.10	-2765.48	-91.56	1.27	1504377.06	3459071.42	40.706140	-103.844116
	8857.00	90.60	88.98	5723.98	-28.11	-2763.61	-1.58	0.57	1504380.62	3459161.34	40.706146	-103.843792
	8946.00	90.92	88.70	5722.80	60.88	-2761.81	87.39	0.48	1504384.08	3459250.27	40.706151	-103.843471
	9036.00	90.59	88.78	5721.61	150.86	-2759.83	177.36	0.38	1504387.74	3459340.18	40.706156	-103.843146
	9125.00	90.98	88.65	5720.39	239.85	-2757.83	266.33	0.46	1504391.40	3459429.10	40.706161	-103.842825
	9215.00	90.62	89.17	5719.14	329.83	-2756.12	356.31	0.70	1504394.79	3459519.02	40.706166	-103.842501
	9304.00	91.08	89.25	5717.82	418.82	-2754.89	445.29	0.52	1504397.68	3459607.97	40.706169	-103.842180
	9394.00	90.78	89.70	5716.36	508.81	-2754.07	535.27	0.60	1504400.18	3459697.92	40.706172	-103.841855
	9483.00	90.88	89.61	5715.07	597.80	-2753.53	624.26	0.15	1504402.38	3459786.85	40.706173	-103.841534
	9573.00	91.02	90.28	5713.57	687.79	-2753.45	714.25	0.76	1504404.15	3459876.85	40.706173	-103.841210
	9662.00	90.85	89.11	5712.12	776.77	-2752.97	803.23	1.33	1504406.28	3459965.81	40.706175	-103.840889
	9752.00	90.81	89.75	5710.82	866.76	-2752.08	893.22	0.71	1504408.86	3460055.76	40.706177	-103.840564
	9841.00	90.82	89.85	5709.55	955.75	-2751.77	982.21	0.11	1504410.83	3460144.73	40.706178	-103.840243
	9931.00	90.75	89.81	5708.32	1045.74	-2751.50	1072.20	0.09	1504412.78	3460234.70	40.706179	-103.839919
	10021.00	90.58	89.02	5707.28	1135.73	-2750.58	1162.19	0.90	1504415.38	3460324.65	40.706181	-103.839594
	10110.00	90.76	90.05	5706.23	1224.73	-2749.86	1251.18	1.17	1504417.76	3460413.61	40.706183	-103.839273
	10200.00	90.71	89.71	5705.08	1314.72	-2749.67	1341.17	0.38	1504419.63	3460503.58	40.706184	-103.838949
	10289.00	89.79	89.19	5704.69	1403.71	-2748.82	1430.17	1.19	1504422.15	3460592.55	40.706186	-103.838628
	10378.00	89.38	90.05	5703.34	1492.71	-2748.22	1519.16	1.07	1504424.40	3460681.51	40.706188	-103.838307
	10468.00	89.57	89.90	5706.16	1582.70	-2748.19	1609.16	0.27	1504426.12	3460771.49	40.706188	-103.837982
	10558.00	90.05	89.39	5706.46	1672.70	-2747.63	1699.15	0.78	1504428.36	3460861.46	40.706189	-103.837658
	10647.00	90.04	90.08	5706.39	1761.70	-2747.22	1788.15	0.78	1504430.43	3460950.44	40.706190	-103.837337
	10737.00	89.74	90.36	5706.56	1851.69	-2747.56	1878.15	0.46	1504431.77	3461040.42	40.706189	-103.837012
	10827.00	89.65	89.14	5707.04	1941.69	-2747.17	1968.15	1.36	1504433.84	3461130.40	40.706190	-103.836687
	10916.00	89.55	90.14	5707.66	2030.68	-2746.61	2057.14	1.13	1504436.06	3461219.36	40.706192	-103.836366
	11006.00	89.78	89.51	5708.19	2120.68	-2746.34	2147.14	0.75	1504438.02	3461309.34	40.706193	-103.836042
	11095.00	90.22	89.99	5708.19	2209.68	-2745.95	2236.14	0.73	1504440.07	3461398.31	40.706194	-103.835721
	11185.00	89.53	89.04	5708.39	2299.68	-2745.18	2326.13	1.30	1504442.51	3461488.28	40.706196	-103.835396
	11274.00	90.36	89.48	5708.47	2388.67	-2744.04	2415.13	1.06	1504445.32	3461577.23	40.706199	-103.835075
	11364.00	90.28	89.24	5707.97	2478.67	-2743.03	2505.12	0.28	1504448.01	3461667.19	40.706202	-103.834751
	11454.00	90.51	89.02	5707.35	2568.67	-2741.66	2595.11	0.35	1504451.06	3461757.13	40.706205	-103.834426
	11543.00	90.74	89.46	5706.38	2657.66	-2740.48	2684.09	0.56	1504453.90	3461846.08	40.706209	-103.834105
	11632.00	90.58	89.27	5705.35	2746.66	-2739.50	2773.08	0.28	1504456.55	3461935.04	40.706211	-103.833784
	11722.00	91.15	89.94	5703.99	2836.64	-2738.88	2863.07	0.98	1504458.85	3462024.99	40.706213	-103.833460
	11811.00	90.74	88.91	5702.53	2925.63	-2737.98	2952.05	1.25	1504461.40	3462113.94	40.706215	-103.833139
	11901.00	90.79	89.87	5701.32	3015.62	-2737.03	3042.04	1.07	1504464.04	3462203.89	40.706218	-103.832814
	11991.00	90.84	89.48	5700.04	3105.61	-2736.52	3132.02	0.44	1504466.23	3462293.86	40.706219	-103.832489
	12080.00	90.82	89.18	5698.75	3194.60	-2735.47	3221.01	0.34	1504468.93	3462382.80	40.706222	-103.832169
	12170.00	91.32	89.45	5697.07	3284.59	-2734.40	3310.99	0.63	1504471.69	3462472.75	40.706225	-103.831844
	12260.00	90.48	89.67	5695.66	3374.57	-2733.71	3400.97	0.96	1504474.06	3462562.70	40.706227	-103.831519
	12349.00	90.20	89.52	5695.13	3463.57	-2733.08	3489.97	0.36	1504476.35	3462651.67	40.706229	-103.831198
	12439.00	90.26	89.86	5694.77	3553.57	-2732.59	3579.97	0.38	1504478.52	3462741.64	40.706230	-103.830874
	12529.00	90.45	89.87	5694.21	3643.57	-2732.38	3669.96	0.21	1504480.41	3462831.62	40.706231	-103.830549
	12618.00	90.64	89.52	5693.37	3732.56	-2731.91	3759.96	0.45	1504482.55	3462920.59	40.706232	-103.830228
	12708.00	89.73	89.34	5693.08	3822.56	-2731.01	3849.96	1.03	1504485.12	3463010.55	40.706234	-103.829904
	12797.00	89.53	89.96	5693.65	3911.56	-2730.47	3939.95	0.73	1504487.33	3463099.52	40.706236	-103.829583
	12887.00	89.53	89.53	5694.27	4001.55	-2730.07	4029.95	0.51	1504489.41	3463189.49	40.706237	-103.829258
	12976.00	90.45	89.72	5694.17	4090.55	-2729.48	4119.94	0.89	1504491.85	3463278.46	40.706238	-103.828937
	13066.00	90.01	89.18	5693.81	4180.55	-2728.62	4209.94	0.77	1504494.20	3463368.42	40.706241	-103.828613
	13156.00	90.35	89.77	5693.53	4270.55	-2727.80	4299.93	0.76	1504496.70	3463458.38	40.706243	-103.828288
	13246.00	90.12	89.61	5693.16	4360.55	-2727.						

Comments	MD (ft)	Incl (°)	Azim True (°)	TVD (ft)	VSEC (ft)	NS (ft)	EW (ft)	DLS (°/100ft)	Northing (ftUS)	Easting (ftUS)	Latitude (°)	Longitude (°)
----------	---------	----------	---------------	----------	-----------	---------	---------	---------------	-----------------	----------------	--------------	---------------

Survey Type: Def Survey

Survey Error Model: ISCWSA Rev 3 \*\*\* 3-D 95.000% Confidence 2.7955 sigma  
 Survey Program:

Description	Part	MD From (ft)	MD To (ft)	EOU Freq (ft)	Hole Size (in)	Casing Diameter (in)	Survey Tool Type	Borehole / Survey
	1	0.000	6.000	1/98.425	13.500	9.625	A001Mb_MWD-Depth Only	Speed Goat Fed 3435-15H /
	1	6.000	21.000	Act Sins	13.500	9.625	A001Mb_MWD-Depth Only	Speed Goat Fed 3435-15H /
	1	21.000	1546.000	Act Sins	13.500	9.625	A001Mb_MWD	Speed Goat Fed 3435-15H /
	1	1546.000	14927.000	Act Sins	8.500	5.500	A010Mb_MWD+IFR1+SAG+MS	Speed Goat Fed 3435-15H / IFR1+MS+SAG 0' to 14927'