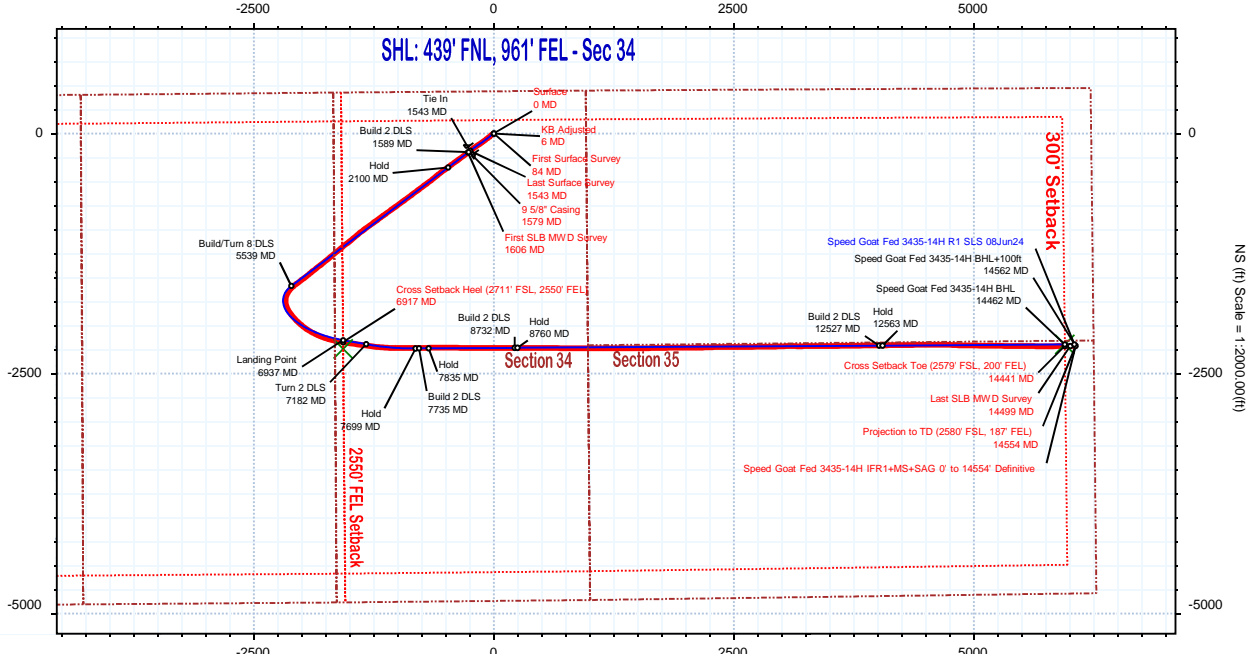
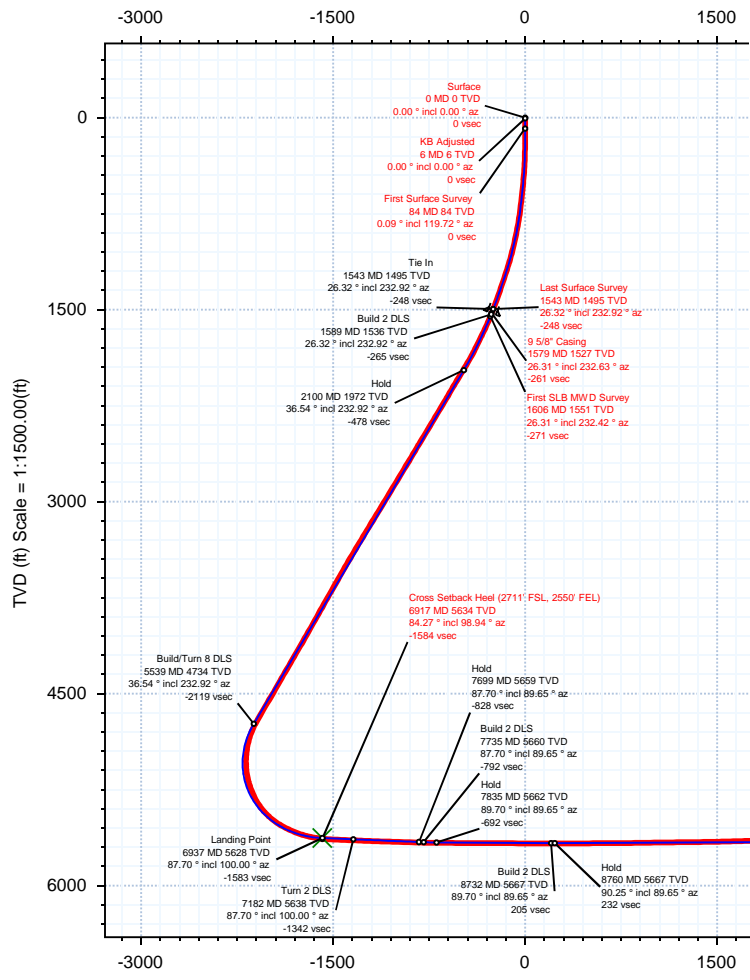
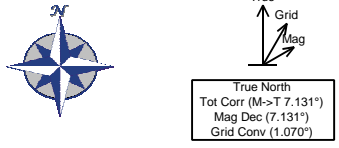


Borehole: Speed Goat Fed 3435-14H	Well: Speed Goat Fed 3435-14H	Field: CO, Weld County (NAD 83 NZ) - 2019	Structure: Verdad Resources 34-09N-58W (Speed Goat 3432-3435 Pad)
---	---	---	---

Gravity & Magnetic Parameters			Surface Location			Miscellaneous		
Model: HDGM 2024	Dip: 66.858°	Date: 04-Apr-2024	Lat: N 40 42 49.59	Northing: 1507159.39ftUS	Grid Conv: 1.0701°	Slot: Speed Goat Fed 3435-14H	TVD Ref: RKB = 21ft(4743ft above Mean Sea Level)	
MagDec: 7.131°	FS: 51840.966nT	Gravity FS: 999.096mg (9.80665 Based)	Lon: W 103 50 37.63	Easting: 3459110.74ftUS	Scale Fact: 0.99998945	Plan: Speed Goat Fed 3435-14H IFR1+MS+SAG 0' to 14554' Definitive		

EW (ft) Scale = 1:2000.00(ft)



Critical Point	MD	INCL	AZIM	TVD	VSEC	N(+)/S(-)	E(+)/W(-)	DLS
Surface	0.00	0.00	0.00	0.00	0.00	0.00	0.00	
KB Adjusted	6.00	0.00	0.00	6.00	0.00	0.00	0.00	0.00
First Surface Survey	84.00	0.09	119.72	84.00	0.05	-0.03	0.05	0.12
Last Surface Survey	1543.00	26.32	232.92	1494.83	-248.33	-181.30	-247.22	1.62
9 5/8\" Casing	1579.00	26.31	232.63	1527.10	-261.09	-190.96	-259.93	0.35
First SLB MWD Survey	1606.00	26.31	232.42	1551.31	-270.64	-198.24	-269.43	0.35
Cross Setback Heel (Z711' FSL, 2550' FEL)	6917.08	84.27	98.94	5633.53	-1583.61	-2173.58	-1570.36	5.60
FEL	6917.08	84.27	98.94	5633.53	-1583.61	-2173.58	-1570.36	5.60
Cross Setback Toe (2579' FSL, 200' FEL)	14441.35	91.02	88.91	5618.75	5934.27	-2213.70	5947.90	0.67
Last SLB MWD Survey	14499.00	91.06	89.29	5617.71	5991.91	-2212.80	6005.54	0.67
Projection to TD (2580' FSL, 187' FEL)	14554.00	91.06	89.29	5616.69	6046.90	-2212.11	6060.52	0.00

Vertical Section (ft) Azim = 89.65° Scale = 1:1500.00(ft) Origin = 0N/-S, 0E/-W



Speed Goat Fed 3435-14H IFR1+MS+SAG 0' to 14554' Definitive Survey

Geodetic Report

(Def Survey)



Report Date: June 24, 2024 - 04:13 PM
Client: Verdad Resources
Field: CO, Weld County (NAD 83 NZ) - 2019
Structure / Slot: Verdad Resources 34-09N-58W (Speed Goat 3432-3435 Pad) / Speed Goat Fed 3435-14H
Well: Speed Goat Fed 3435-14H
Borehole: Speed Goat Fed 3435-14H
UWI / API#: Unknown / 05-123-52497
Survey Name: Speed Goat Fed 3435-14H IFR1+MS+SAG 0' to 14554' Definitive
Survey Date: May 08, 2024
Tort / AHD / DDI / ERD Ratio: 296.754 ° / 11226.555 ft / 6.932 / 1.980
Coordinate Reference System: NAD83 Colorado State Plane, Northern Zone, US Feet
Location Lat / Long: N 40° 42' 49.58635", W 103° 50' 37.63322"
Location Grid N/E Y/X: N 1507159.390 ftUS, E 3459110.740 ftUS
CRS Grid Convergence Angle: 1.0701 °
Grid Scale Factor: 0.99998945
Version / Patch: 2.10.836.0

Survey / DLS Computation: Minimum Curvature / Lubinski
Vertical Section Azimuth: 89.650 ° (True North)
Vertical Section Origin: 0.000 ft, 0.000 ft
TVD Reference Datum: RKB = 21ft
TVD Reference Elevation: 4743.000 ft above Mean Sea Level
Seabed / Ground Elevation: 4722.000 ft above Mean Sea Level
Magnetic Declination: 7.131 °
Total Gravity Field Strength: 999.0960mgn (9.80665 Based)
Gravity Model: GARM
Total Magnetic Field Strength: 51840.966 nT
Magnetic Dip Angle: 66.858 °
Declination Date: April 04, 2024
Magnetic Declination Model: HDGM 2024
North Reference: True North
Grid Convergence Used: 0.0000 °
Total Corr Mag North->True North: 7.1315 °
Local Coord Referenced To: Well Head

Comments	MD (ft)	Incl (°)	Azim True (°)	TVD (ft)	VSEC (ft)	NS (ft)	EW (ft)	DLS (°/100ft)	Northing (ftUS)	Easting (ftUS)	Latitude (°)	Longitude (°)
Surface	0.00	0.00	0.00	0.00	0.00	0.00	0.00	N/A	1507159.39	3459110.74	40.713774	-103.843787
KB Adjusted	6.00	0.00	0.00	6.00	0.00	0.00	0.00	0.00	1507159.39	3459110.74	40.713774	-103.843787
First Surface Survey	84.00	0.09	119.72	84.00	0.05	-0.03	0.05	0.12	1507159.36	3459110.79	40.713774	-103.843787
	176.00	0.09	67.89	176.00	0.18	-0.04	0.18	0.09	1507159.35	3459110.92	40.713774	-103.843786
	267.00	1.27	224.48	266.99	-0.46	-0.73	-0.46	1.49	1507158.65	3459110.30	40.713772	-103.843789
	358.00	3.03	249.01	357.93	-3.42	-2.31	-3.41	2.14	1507157.01	3459107.37	40.713768	-103.843799
	448.00	4.92	246.37	447.71	-9.20	-4.71	-9.17	2.11	1507154.51	3459101.66	40.713761	-103.843820
	537.00	6.99	233.71	536.22	-17.09	-9.45	-17.03	2.74	1507149.63	3459093.89	40.713748	-103.843848
	627.00	8.44	227.12	625.41	-26.39	-17.18	-26.28	1.88	1507141.72	3459084.77	40.713727	-103.843882
	716.00	9.67	226.33	713.30	-36.64	-26.79	-36.48	1.39	1507131.92	3459074.77	40.713700	-103.843919
	806.00	11.34	234.24	801.79	-49.35	-37.18	-49.13	2.45	1507121.30	3459062.32	40.713672	-103.843964
	895.00	13.40	235.03	888.72	-64.97	-48.21	-64.68	2.32	1507109.98	3459046.97	40.713642	-103.844020
	984.00	16.26	230.99	974.75	-83.19	-61.96	-82.82	3.42	1507095.89	3459029.10	40.713604	-103.844086
	1074.00	18.24	233.01	1060.70	-104.34	-78.37	-103.86	2.30	1507079.09	3459008.36	40.713559	-103.844162
	1163.00	19.82	236.00	1144.83	-128.07	-95.19	-127.50	2.09	1507061.84	3458985.05	40.713513	-103.844247
	1253.00	22.06	235.29	1228.88	-154.73	-113.35	-154.04	2.50	1507043.19	3458958.84	40.713463	-103.844343
	1342.00	21.88	236.79	1311.42	-182.46	-131.95	-181.66	0.66	1507024.07	3458931.58	40.713412	-103.844442
	1431.00	23.77	231.69	1393.46	-210.54	-152.15	-209.61	3.07	1507003.35	3458904.01	40.713356	-103.844543
	1521.00	26.02	232.48	1475.09	-240.57	-175.42	-239.50	2.53	1506979.52	3458874.56	40.713292	-103.844651
Last Surface Survey	1543.00	26.32	232.92	1494.83	-248.33	-181.30	-247.22	1.62	1506973.50	3458866.95	40.713276	-103.844679
9 5/8" Casing	1579.00	26.31	232.63	1527.10	-261.09	-190.96	-259.93	0.35	1506963.61	3458854.42	40.713250	-103.844725
First SLB MWD Survey	1606.00	26.31	232.42	1551.31	-270.64	-198.24	-269.43	0.35	1506956.16	3458845.06	40.713230	-103.844759
	1695.00	29.60	232.69	1629.91	-303.91	-223.60	-302.55	3.70	1506930.18	3458812.42	40.713160	-103.844878
	1785.00	31.09	233.92	1707.58	-340.54	-250.76	-339.01	1.79	1506902.35	3458776.47	40.713086	-103.845010
	1875.00	31.39	233.88	1784.53	-378.42	-278.26	-376.73	0.33	1506874.15	3458739.28	40.713010	-103.845146
	1964.00	33.98	234.19	1859.43	-417.49	-306.48	-415.63	2.92	1506845.21	3458700.91	40.712933	-103.845286
	2054.00	36.15	233.46	1933.09	-459.41	-337.00	-457.36	2.46	1506813.91	3458659.76	40.712849	-103.845437
	2143.00	36.81	234.00	2004.65	-502.26	-368.31	-500.02	0.82	1506781.82	3458617.69	40.712763	-103.845591
	2233.00	36.93	233.19	2076.65	-545.91	-400.35	-543.48	0.56	1506748.96	3458574.84	40.712675	-103.845747
	2323.00	36.52	230.20	2148.79	-588.34	-433.70	-585.70	2.04	1506714.83	3458533.25	40.712584	-103.845900
	2412.00	37.08	231.88	2220.06	-630.00	-467.21	-627.16	1.29	1506680.55	3458492.42	40.712492	-103.846049
	2502.00	36.94	232.56	2291.93	-673.02	-500.40	-669.98	0.48	1506646.57	3458450.23	40.712400	-103.846204
	2591.00	36.30	233.79	2363.36	-715.71	-532.23	-712.47	1.09	1506613.96	3458408.34	40.712313	-103.846357
	2681.00	36.80	232.92	2435.66	-758.90	-564.22	-755.47	0.80	1506581.17	3458365.95	40.712225	-103.846512
	2770.00	36.96	233.99	2506.85	-802.01	-596.02	-798.38	0.74	1506548.57	3458323.64	40.712138	-103.846667
	2860.00	36.68	232.19	2578.90	-845.33	-628.41	-841.50	1.24	1506515.39	3458281.13	40.712049	-103.846822
	2949.00	36.21	233.68	2650.50	-887.70	-660.27	-883.69	1.13	1506482.74	3458239.55	40.711962	-103.846975
	3039.00	36.89	234.29	2722.80	-931.25	-691.79	-927.04	0.86	1506450.42	3458196.79	40.711875	-103.847131
	3129.00	36.49	233.05	2794.97	-974.76	-723.64	-970.36	0.94	1506417.76	3458154.07	40.711788	-103.847287
	3218.00	36.90	234.22	2866.33	-1017.78	-755.17	-1013.19	0.91	1506385.44	3458111.85	40.711701	-103.847442
	3308.00	36.35	234.70	2938.56	-1061.66	-786.38	-1056.87	0.69	1506353.42	3458068.75	40.711616	-103.847599
	3396.00	36.74	233.50	3009.26	-1104.29	-817.11	-1099.32	0.93	1506321.91	3458026.89	40.711531	-103.847752
	3486.00	36.61	235.14	3081.40	-1148.19	-848.49	-1143.03	1.09	1506289.71	3457983.77	40.711445	-103.847910
	3575.00	37.13	232.79	3152.56	-1191.61	-879.94	-1186.25	1.65	1506257.46	3457941.14	40.711359	-103.848066
	3665.00	36.64	234.33	3224.54	-1235.25	-912.03	-1229.70	1.16	1506224.56	3457898.30	40.711271	-103.848223
	3754.00	36.89	233.79	3295.84	-1278.57	-943.30	-1272.83	0.46	1506192.50	3457855.76	40.711185	-103.848378
	3843.00	35.91	234.05	3367.47	-1321.44	-974.40	-1315.51	1.11	1506160.60	3457813.67	40.711099	-103.848532
	3933.00	36.60	232.91	3440.05	-1364.40	-1006.08	-1358.28	1.07	1506128.13	3457771.50	40.711012	-103.848686
	4022.00	36.39	231.44	3511.60	-1406.41	-1038.54	-1400.09	1.01	1506094.90	3457730.30	40.710923	-103.848837
	4112.00	36.13	229.78	3584.17	-1447.75	-1072.31	-1441.23	1.13	1506060.36	3457689.81	40.710831	-103.848986
	4201.00	36.12	230.97	3656.06	-1488.37	-1105.77	-1481.64	0.79	1506026.15	3457650.03	40.710739	-103.849131
	4291.00	36.26	231.26	3728.70	-1529.94	-1139.13	-1523.01	0.25	1505992.03	3457609.29	40.710647	-103.849281
	4381.00	35.66	231.36	3801.55	-1571.39	-1172.17	-1564.26	0.67	1505958.23	3457568.66	40.710557	-103.849429
	4470.00	35.86	230.34	3873.77	-1611.92	-1205.01	-1604.59	0.71	1505924.64	3457528.95	40.710466	-103.849575
	4560.00	36.30	230.16	3946.50	-1652.88	-1238.90	-1645.34	0.50	1505890.00	3457488.84	40.710373	-103.849722
	4649.00	36.08	230.47	4018.33	-1693.52	-1272.46	-1685.78	0.32	1505855.69	3457449.04	40.710281	-103.849868
	4739.00	36.53	229.47	4090.86	-1734.53	-1306.73	-1726.58	0.83	1505820.66	3457408.88	40.710187	-103.850015
	4828.00	36.60	231.88	4162.35	-1775.75	-1340.32	-1767.59	1.62	1505786.30	3457368.51	40.710095	-103.850163
	4918.00	36.28	231.47	4234.75	-1817.89	-1373.47	-1809.53	0.45	1505752.38	3457327.20	40.710004	-103.850314
	5007.00	36.19	232.48	4306.54	-1859.52	-1405.88	-1850.97	0.68	1505719.20	3457286.37	40.709915	-103.850463
	5097.00	36.15	231.02	4379.20	-1901.43	-1438.76	-1892.68	0.96	1505685.55	3457245.28	40.709825	-103.850614
	5187.00	36.39	229.99	4451.76	-1942.72	-1472.63	-1933.76	0.73	1505650.93	3457204.84	40.709732	-103.850762
	5276.00	36.26	234.06	4523.47	-1984.46	-1505.05	-1975.30	2.71	1505617.73	3457163.92	40.709643	-103.850912
	5366.00	36.22	232.54	4596.06	-2027.31	-1536.85	-2017.96	1.00	1505585.14	3457121.86	40.709555	-103.851066
	5455.00	36.15	232.27	4667.90	-2069.14	-1568.90	-2059.59	0.20	1505552.32	3457080.83	40.709468	-103.851216
	5545.00	35.64	227.98	4740.82	-2109.82	-1602.70	-2100.07	2.85	1505517.76	3457040.99	40.709375	-103.851362
	5635.00	30.97	215.48	4816.10	-2143.02	-1639.18	-2133.05	9.20	1505480.68	3457008.70	40.709275	-103.851481
	5724.00	26.40	205.25	4894.21	-2165.00	-1675.76	-2154.81	7.52	1505443.70	3456967.93	40.709174	-103.851559
	5814.00	25.55	191.39	4975.19	-2177.61	-1712.92	-2167.19	6.80	1505406.32	3456927.95	40.709072	-103.851604
	5903.00	28.52	175.15	5054.57	-2179.85	-1752.97	-2169.18	8.91	1505366.24	3456887.04	40.708962	-103.851611
	5993.00	30.60	163.13	5132.92	-2171.64	-1796.34	-2160.71	6.97	1505323.03	3456846.98	40.708843	-103.851581
	6083.00	32.11	149.67	5209.87	-2153.15	-1838.97	-2141.96	7.95				

Comments	MD (ft)	Incl (°)	Azim True (°)	TVD (ft)	VSEC (ft)	NS (ft)	EW (ft)	DLS (°/100ft)	Northing (ftUS)	Easting (ftUS)	Latitude (°)	Longitude (°)
	6441.00	55.83	128.01	5468.65	-1990.39	-2017.12	-1978.10	8.32	1505105.70	3457170.68	40.708237	-103.850922
	6530.00	60.99	120.29	5515.31	-1927.92	-2059.50	-1915.38	9.39	1505064.51	3457234.18	40.708121	-103.850696
	6620.00	66.28	114.90	5555.28	-1856.71	-2096.74	-1843.93	7.96	1505028.60	3457306.31	40.708019	-103.850438
	6710.00	70.30	109.03	5588.59	-1779.39	-2127.94	-1766.42	7.53	1504998.86	3457384.39	40.707933	-103.850158
	6799.00	76.43	103.54	5614.08	-1697.74	-2151.76	-1684.63	9.07	1504976.57	3457466.61	40.707868	-103.849863
	6888.00	82.67	99.25	5630.22	-1612.11	-2169.01	-1598.89	8.46	1504960.92	3457552.66	40.707820	-103.849554
Cross Setback Heel (2711' FSL, 2550' FEL)	6917.08	84.27	98.94	5633.53	-1583.61	-2173.58	-1570.36	5.60	1504956.89	3457581.27	40.707808	-103.849451
	6978.00	87.62	98.31	5637.83	-1523.59	-2182.69	-1510.29	5.60	1504948.90	3457641.50	40.707783	-103.849234
	7068.00	87.49	98.96	5641.67	-1434.78	-2196.19	-1421.39	0.74	1504937.06	3457730.63	40.707746	-103.848914
	7157.00	87.95	97.81	5645.21	-1346.88	-2209.16	-1333.41	1.39	1504925.74	3457818.84	40.707710	-103.848596
	7247.00	87.53	96.37	5648.76	-1257.71	-2220.26	-1244.17	1.67	1504916.31	3457908.27	40.707680	-103.848275
	7336.00	87.83	94.50	5652.37	-1169.24	-2228.68	-1155.65	2.13	1504909.54	3457996.93	40.707657	-103.847955
	7426.00	88.35	91.74	5655.37	-1079.47	-2233.58	-1065.84	3.12	1504906.32	3458086.81	40.707643	-103.847631
	7515.00	88.13	89.78	5658.10	-990.53	-2234.76	-976.90	2.22	1504906.81	3458175.76	40.707640	-103.847311
	7604.00	88.31	89.51	5660.87	-901.57	-2234.21	-887.94	0.36	1504909.02	3458264.69	40.707642	-103.846990
	7694.00	88.15	89.35	5663.64	-811.62	-2233.31	-797.99	0.25	1504911.59	3458354.61	40.707644	-103.846665
	7783.00	89.75	89.33	5665.28	-722.64	-2232.29	-709.01	1.80	1504914.28	3458443.55	40.707647	-103.846344
	7873.00	89.62	89.57	5665.77	-632.64	-2231.42	-619.02	0.30	1504916.82	3458533.51	40.707649	-103.846020
	7963.00	89.75	90.36	5666.27	-542.64	-2231.37	-529.02	0.89	1504918.56	3458623.49	40.707649	-103.845695
	8052.00	89.93	90.26	5666.51	-453.65	-2231.85	-440.02	0.23	1504919.74	3458712.48	40.707648	-103.845374
	8141.00	89.39	90.44	5667.04	-364.66	-2232.39	-351.03	0.64	1504920.86	3458801.47	40.707647	-103.845053
	8231.00	89.75	90.45	5667.72	-274.67	-2233.09	-261.03	0.40	1504921.84	3458891.46	40.707645	-103.844729
	8320.00	89.75	90.17	5668.11	-185.67	-2233.57	-172.03	0.31	1504923.02	3458980.45	40.707643	-103.844408
	8410.00	89.69	89.66	5668.55	-95.68	-2233.44	-82.03	0.57	1504924.84	3459070.43	40.707644	-103.844083
	8499.00	89.59	89.61	5669.10	-6.68	-2232.87	6.96	0.13	1504927.06	3459159.40	40.707645	-103.843762
	8589.00	89.73	89.97	5669.64	83.32	-2232.54	96.96	0.43	1504929.07	3459249.38	40.707646	-103.843437
	8678.00	89.35	90.48	5670.35	172.31	-2232.89	185.96	0.71	1504930.39	3459338.36	40.707645	-103.843116
	8768.00	90.21	90.44	5670.70	262.30	-2233.62	275.95	0.96	1504931.35	3459428.35	40.707643	-103.842792
	8857.00	90.15	89.70	5670.42	351.30	-2233.72	364.95	0.83	1504932.90	3459517.34	40.707643	-103.842471
	8947.00	90.89	90.79	5669.60	441.29	-2234.11	454.94	1.46	1504934.20	3459607.32	40.707642	-103.842146
	9037.00	90.39	90.61	5668.60	531.27	-2235.21	544.93	0.59	1504934.78	3459697.31	40.707639	-103.841822
	9126.00	90.39	89.91	5667.99	620.26	-2235.61	633.93	0.79	1504936.04	3459786.30	40.707638	-103.841501
	9216.00	90.43	90.29	5667.35	710.25	-2235.77	723.92	0.42	1504937.56	3459876.28	40.707637	-103.841176
	9305.00	90.39	90.14	5666.71	799.25	-2236.10	812.92	0.17	1504938.89	3459965.26	40.707636	-103.840855
	9395.00	90.65	90.35	5665.89	889.24	-2236.49	902.92	0.37	1504940.18	3460055.26	40.707635	-103.840530
	9484.00	91.44	89.88	5664.27	978.22	-2236.67	991.90	1.03	1504941.67	3460144.23	40.707635	-103.840209
	9573.00	90.62	89.93	5662.67	1067.20	-2236.52	1080.89	0.92	1504943.48	3460233.19	40.707635	-103.839888
	9663.00	90.97	89.72	5661.42	1157.19	-2236.24	1170.88	0.45	1504945.43	3460323.16	40.707636	-103.839564
	9752.00	90.25	90.73	5660.47	1246.18	-2236.59	1260.14	1.39	1504946.74	3460412.14	40.707635	-103.839243
	9842.00	91.07	89.88	5659.44	1336.17	-2237.07	1349.86	1.31	1504947.95	3460502.13	40.707634	-103.838918
	9931.00	90.62	90.79	5658.13	1425.15	-2237.59	1438.85	1.14	1504949.09	3460591.11	40.707632	-103.838597
	10021.00	91.53	89.60	5656.44	1515.13	-2237.90	1528.83	1.66	1504950.46	3460681.08	40.707631	-103.838273
	10110.00	91.49	88.21	5654.09	1604.09	-2236.20	1617.78	1.56	1504953.82	3460769.98	40.707636	-103.837952
	10200.00	91.47	89.84	5651.77	1694.05	-2234.67	1707.73	1.81	1504957.03	3460859.89	40.707640	-103.837627
	10289.00	91.32	88.07	5649.60	1783.01	-2233.05	1796.69	2.00	1504960.32	3460948.80	40.707645	-103.837307
	10379.00	91.19	89.30	5647.63	1872.98	-2230.98	1886.64	1.37	1504964.06	3461038.70	40.707650	-103.836982
	10468.00	91.82	91.49	5645.29	1961.93	-2231.59	1975.60	2.56	1504965.11	3461127.65	40.707649	-103.836661
	10557.00	91.23	88.92	5642.92	2050.89	-2231.91	2064.56	2.96	1504966.45	3461216.60	40.707648	-103.836340
	10647.00	91.55	88.65	5640.74	2140.85	-2230.00	2154.52	0.47	1504970.04	3461306.50	40.707653	-103.836016
	10736.00	90.25	87.77	5639.34	2229.81	-2227.22	2243.46	1.76	1504974.48	3461395.38	40.707661	-103.835695
	10826.00	90.18	88.96	5639.00	2319.79	-2224.66	2333.42	1.32	1504978.73	3461485.27	40.707668	-103.835371
	10916.00	90.31	91.45	5638.62	2409.78	-2224.98	2423.41	2.77	1504980.09	3461575.25	40.707667	-103.835046
	11005.00	90.28	87.90	5638.16	2498.76	-2224.47	2512.40	3.99	1504982.25	3461664.21	40.707668	-103.834725
	11095.00	90.49	90.59	5637.55	2588.75	-2223.29	2602.38	3.00	1504985.12	3461754.15	40.707671	-103.834401
	11184.00	90.38	88.71	5636.88	2677.74	-2222.74	2691.37	2.12	1504987.33	3461843.12	40.707673	-103.834080
	11274.00	90.16	88.90	5636.45	2767.73	-2220.87	2781.35	0.32	1504990.88	3461933.05	40.707678	-103.833755
	11363.00	90.03	90.10	5636.31	2856.73	-2220.09	2870.34	1.36	1504993.32	3462022.01	40.707680	-103.833434
	11453.00	90.22	87.45	5636.11	2946.71	-2218.17	2960.31	2.95	1504996.92	3462111.93	40.707685	-103.833110
	11542.00	90.27	88.76	5635.73	3035.67	-2215.22	3049.26	1.47	1505001.53	3462200.80	40.707693	-103.832789
	11632.00	90.25	91.52	5635.32	3125.66	-2215.44	3139.25	3.07	1505002.99	3462290.78	40.707693	-103.832464
	11722.00	90.46	88.49	5634.76	3215.65	-2215.45	3229.24	3.37	1505004.66	3462380.75	40.707693	-103.832140
	11811.00	90.50	89.92	5634.02	3304.64	-2214.22	3318.23	1.61	1505007.56	3462469.70	40.707696	-103.831819
	11901.00	90.38	89.30	5633.33	3394.64	-2213.60	3408.22	0.70	1505009.85	3462559.67	40.707698	-103.831494
	11990.00	90.36	90.42	5632.75	3483.63	-2213.39	3497.22	1.26	1505011.73	3462649.64	40.707698	-103.831173
	12080.00	90.38	88.61	5632.17	3573.63	-2212.63	3587.21	2.01	1505014.17	3462739.60	40.707700	-103.830848
	12169.00	90.63	89.22	5631.39	3662.61	-2210.94	3676.19	0.74	1505017.52	3462829.53	40.707705	-103.830528
	12259.00	90.48	89.18	5630.52	3752.61	-2209.68	3766.18	0.17	1505020.46	3462917.48	40.707708	-103.830203
	12349.00	90.40	88.87	5629.82	3842.60	-2208.15	3856.16	0.36	1505023.67	3463007.42	40.707712	-103.829878
	12438.00	89.76	89.81	5629.70	3931.60	-2207.13	3945.15	1.28	1505026.36	3463096.38	40.707715	-103.829557
	12528.00	90.31	89.40	5629.64	4021.60	-2206.51	4035.15	0.76	1505028.66	3463186.34	40.707717	-103.829233
	12617.00	90.38	89.06	5629.11	4110.59	-2205.31	4124.14	0.39	1505031.51	3463275.30	40.707720	-103.828912
	12706.00	89.27	89.92	5629.38	4199.59	-2204.52	4213.13	1.58	1505033.97	3463364.26	40.707722	-103.828591
	12796.00	89.32	88.94	5629.49	4289.58	-2203.62	4303.12	1.09	1505036.54	3463454.21	40.707725	-103.828266
	12886.00	89.34	88.59	5631.54	4379.56	-2201.68	4393.09	0.39	1505040.16	3463544.13	40.707730	-103.827942
	12975.00	89.39	89.49	5632.53	4468.55	-2200.19	4482.08	1.01	1505043.32	3463633.07	40.707734	-103.827621
	13065.00	89.57	89.62	5633.34	4558.55	-2199.49	4572.07	0.25	1505045.70	3463723.03	40.707736	-103.827296
	13154.00	89.21	91.00	5634.29	4647.53	-2199.97	4661.06	1.60	1505046.88	3463812.02	40.707734	-103.826975
	13244.00	89.32	91.40	5635.45	4737.49	-2201.86	4751.					

Comments	MD (ft)	Incl (°)	Azim True (°)	TVD (ft)	VSEC (ft)	NS (ft)	EW (ft)	DLS (°/100ft)	Northing (ftUS)	Easting (ftUS)	Latitude (°)	Longitude (°)
Survey Program:												
Description	Part	MD From (ft)	MD To (ft)	EOU Freq (ft)	Hole Size	Casing Diameter (in)	Survey Tool Type	Borehole / Survey				
	1	0.000	6.000	1/98.425	13.500	9.625	A001Mb_MWD-Depth Only	Speed Goat Fed 3435-14H /				
	1	6.000	21.000	Act Stns	13.500	9.625	A001Mb_MWD-Depth Only	Speed Goat Fed 3435-14H /				
	1	21.000	1543.000	Act Stns	13.500	9.625	A001Mb_MWD	Speed Goat Fed 3435-14H /				
	1	1543.000	14554.000	Act Stns	8.500	5.500	A010Mb_MWD+IFR1+SAG+MS	Speed Goat Fed 3435-14H / IFR1+MS+SAG 0' to 14554'				