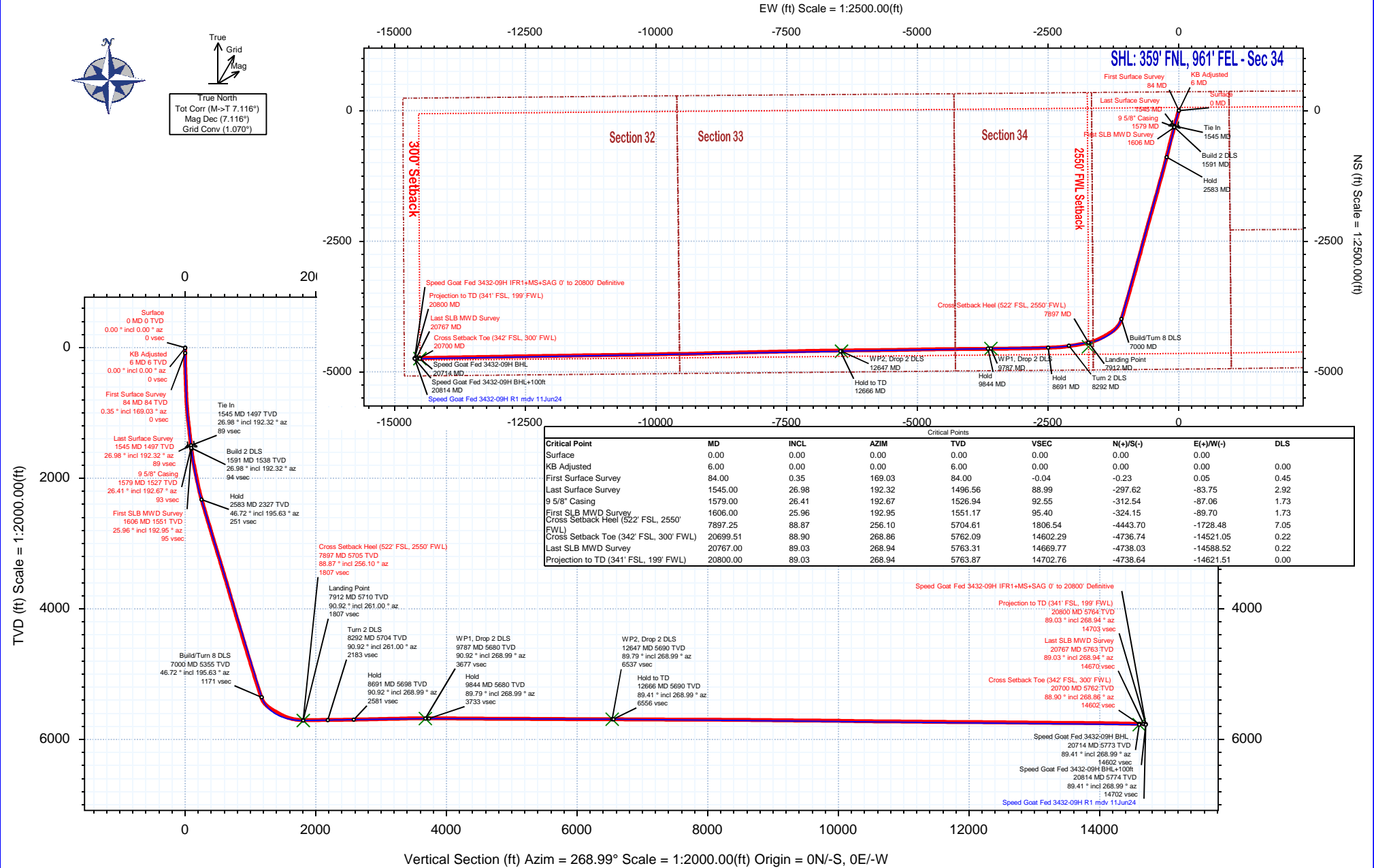


Borehole: Speed Goat Fed 3432-09H	Well: Speed Goat Fed 3432-09H	Field: CO, Weld County (NAD 83 NZ) - 2019	Structure: Verdad Resources 34-09N-58W (Speed Goat 3432-3435 Pad)
---	---	---	---

Gravity & Magnetic Parameters				Surface Location NAD83 Colorado State Plane, Northern Zone, US Feet				Miscellaneous			
Model: HDGM 2024	Dip: 66.849°	Date: 11-Jun-2024		Lat: N 40 42 50.38	Northing: 1507239.52ftUS	Grid Conv: 1.0701°		Slot: Speed Goat Fed 3432-09H	TVD Ref: RKB = 21ft(4743ft above Mean Sea Level)		
MagDec: 7.116°	FS: 51815.859mT	Gravity FS: 999.096mg (9.80665 Based)		Lon: W 103 50 37.64	Easting: 3459108.69ftUS	Scale Fact: 0.99998948		Plan: Speed Goat Fed 3432-09H IFR1+MS+SAG 0' to 20800' Definitive			





Speed Goat Fed 3432-09H IFR1+MS+SAG 0' to 20800' Definitive Survey

Geodetic Report

(Def Survey)



Report Date: July 08, 2024 - 08:42 AM
Client: Verdad Resources
Field: CO, Weld County (NAD 83 NZ) - 2019
Structure / Slot: Verdad Resources 34-09N-58W (Speed Goat 3432-3435 Pad) / Speed Goat Fed 3432-09H
Well: Speed Goat Fed 3432-09H
Borehole: Speed Goat Fed 3432-09H
UWI / API#: Unknown / 05-123-52498
Survey Name: Speed Goat Fed 3432-09H IFR1+MS+SAG 0' to 20800' Definitive
Survey Date: May 08, 2024
Tort / AHD / DDI / ERD Ratio: 255.151 ° / 17850.158 ft / 7.216 / 3.097
Coordinate Reference System: NAD83 Colorado State Plane, Northern Zone, US Feet
Location Lat / Long: N 40° 42' 50.37838", W 103° 50' 37.64040"
Location Grid N/E Y/X: N 1507239.520 ftUS, E 3459108.690 ftUS
CRS Grid Convergence Angle: 1.0701 °
Grid Scale Factor: 0.99998948
Version / Patch: 2.10.836.0

Survey / DLS Computation: Minimum Curvature / Lubinski
Vertical Section Azimuth: 268.990 ° (True North)
Vertical Section Origin: 0.000 ft, 0.000 ft
TVD Reference Datum: RKB = 21ft
TVD Reference Elevation: 4743.000 ft above Mean Sea Level
Seabed / Ground Elevation: 4722.000 ft above Mean Sea Level
Magnetic Declination: 7.116 °
Total Gravity Field Strength: 999.0960mgn (9.80665 Based)
Gravity Model: GARM
Total Magnetic Field Strength: 51815.859 nT
Magnetic Dip Angle: 66.849 °
Declination Date: June 11, 2024
Magnetic Declination Model: HDGM 2024
North Reference: True North
Grid Convergence Used: 0.0000 °
Total Corr Mag North->True North: 7.1163 °
Local Coord Referenced To: Well Head

Comments	MD (ft)	Incl (°)	Azim True (°)	TVD (ft)	VSEC (ft)	NS (ft)	EW (ft)	DLS (°/100ft)	Northing (ftUS)	Easting (ftUS)	Latitude (°)	Longitude (°)
Surface	0.00	0.00	0.00	0.00	0.00	0.00	0.00	N/A	1507239.52	3459108.69	40.713994	-103.843789
KB Adjusted	6.00	0.00	0.00	6.00	0.00	0.00	0.00	0.00	1507239.52	3459108.69	40.713994	-103.843789
First Surface Survey	84.00	0.35	169.03	84.00	-0.04	-0.23	0.05	0.45	1507239.29	3459108.74	40.713993	-103.843789
	176.00	0.75	347.27	176.00	0.03	0.08	-0.03	1.20	1507239.60	3459108.65	40.713994	-103.843789
	267.00	1.14	223.43	266.99	0.79	0.00	-0.79	1.84	1507239.51	3459107.90	40.713994	-103.843792
	358.00	3.65	210.25	357.90	2.92	-3.16	-2.87	2.81	1507236.31	3459105.88	40.713985	-103.843799
	448.00	5.80	201.46	447.59	6.15	-9.87	-5.98	2.51	1507229.54	3459102.90	40.713967	-103.843811
	537.00	6.42	198.56	536.09	9.54	-18.77	-9.21	0.78	1507220.58	3459099.84	40.713942	-103.843822
	627.00	7.60	193.46	625.42	12.71	-29.33	-12.19	1.48	1507209.97	3459097.05	40.713913	-103.843833
	716.00	10.20	191.53	713.34	15.89	-42.78	-15.14	2.94	1507196.47	3459094.35	40.713877	-103.843844
	806.00	12.52	193.28	801.57	20.03	-60.08	-18.97	2.61	1507179.10	3459090.84	40.713829	-103.843857
	895.00	14.33	194.69	888.13	25.39	-80.12	-23.98	2.07	1507158.96	3459086.21	40.713774	-103.843876
	984.00	16.00	196.10	974.03	31.98	-102.56	-30.18	1.92	1507136.41	3459080.43	40.713712	-103.843898
	1074.00	18.15	197.24	1060.06	40.02	-127.87	-37.77	2.42	1507110.97	3459073.31	40.713643	-103.843925
	1163.00	19.78	196.71	1144.22	48.95	-155.54	-46.21	1.84	1507083.15	3459065.39	40.713567	-103.843956
	1253.00	21.27	196.62	1228.51	58.53	-185.77	-55.26	1.66	1507052.76	3459056.91	40.713484	-103.843988
	1342.00	21.71	194.69	1311.32	67.87	-217.16	-64.05	0.94	1507021.21	3459048.71	40.713398	-103.844020
	1431.00	23.51	194.51	1393.48	77.07	-250.27	-72.67	2.02	1506987.94	3459040.70	40.713307	-103.844051
	1521.00	26.28	192.40	1475.11	86.50	-287.12	-81.45	3.23	1506950.94	3459032.62	40.713206	-103.844083
Last Surface Survey	1545.00	26.98	192.32	1496.56	88.99	-297.62	-83.75	2.92	1506940.39	3459030.51	40.713177	-103.844091
9 5/8" Casing First SLB MWD Survey	1579.00	26.41	192.67	1526.94	92.55	-312.54	-87.06	1.73	1506925.42	3459027.49	40.713136	-103.844103
	1606.00	25.96	192.95	1551.17	95.40	-324.15	-89.70	1.73	1506913.75	3459025.06	40.713104	-103.844113
	1695.00	28.29	193.56	1630.37	105.40	-363.65	-99.01	2.64	1506874.09	3459016.49	40.712996	-103.844146
	1785.00	31.09	196.05	1708.55	117.59	-406.72	-110.44	3.40	1506830.81	3459005.87	40.712878	-103.844187
	1875.00	33.48	196.79	1784.64	132.00	-452.82	-124.04	2.69	1506784.46	3458993.13	40.712751	-103.844236
	1964.00	34.50	195.16	1858.43	146.52	-500.66	-137.72	1.54	1506736.39	3458980.35	40.712620	-103.844286
	2054.00	37.95	193.02	1931.02	161.38	-551.97	-151.67	3.83	1506684.82	3458967.35	40.712479	-103.844336
	2143.00	37.80	194.53	2001.27	176.35	-604.78	-165.72	0.53	1506631.76	3458954.30	40.712334	-103.844387
	2233.00	39.85	193.24	2071.39	190.84	-659.55	-179.24	2.45	1506576.75	3458941.80	40.712184	-103.844436
	2322.00	41.37	192.62	2138.95	204.79	-716.01	-192.20	1.77	1506520.05	3458929.90	40.712029	-103.844482
	2412.00	43.70	193.19	2205.26	219.43	-775.31	-205.79	2.62	1506460.51	3458917.41	40.711866	-103.844531
	2501.00	45.71	194.86	2268.52	235.68	-836.04	-220.98	2.62	1506399.51	3458903.36	40.711699	-103.844586
	2591.00	47.24	193.63	2330.50	252.84	-899.29	-237.03	1.97	1506335.97	3458888.50	40.711526	-103.844644
	2680.00	47.51	194.68	2390.77	269.98	-962.78	-253.04	0.92	1506272.19	3458873.67	40.711351	-103.844702
	2770.00	47.04	195.86	2451.83	288.51	-1026.56	-270.45	1.10	1506208.10	3458857.46	40.711176	-103.844765
	2860.00	46.59	193.29	2513.43	306.14	-1090.06	-286.97	2.14	1506144.30	3458842.13	40.711002	-103.844824
	2949.00	47.21	196.53	2574.25	323.97	-1152.84	-303.70	2.75	1506081.22	3458826.58	40.710830	-103.844884
	3039.00	46.90	193.61	2635.57	342.22	-1216.44	-320.82	2.40	1506017.31	3458810.64	40.710655	-103.844946
	3128.00	46.98	196.46	2696.35	360.19	-1279.23	-337.69	2.34	1505954.22	3458794.95	40.710483	-103.845007
	3218.00	46.60	196.37	2757.97	379.83	-1342.15	-356.23	0.43	1505890.97	3458777.59	40.710310	-103.845074
	3307.00	46.80	193.66	2819.01	397.71	-1404.70	-373.00	2.23	1505828.11	3458761.99	40.710138	-103.845134
	3397.00	46.99	196.13	2880.52	415.71	-1468.19	-389.89	2.01	1505764.32	3458746.29	40.709964	-103.845195
	3487.00	46.68	193.28	2942.09	433.49	-1531.67	-406.56	2.34	1505700.54	3458730.81	40.709790	-103.845255
	3576.00	46.59	197.76	3003.22	451.89	-1593.99	-423.86	3.66	1505637.91	3458714.68	40.709619	-103.845318
	3666.00	46.73	195.41	3064.99	471.67	-1656.71	-442.54	1.91	1505574.85	3458697.17	40.709447	-103.845385
	3755.00	46.62	195.30	3126.06	489.92	-1719.15	-459.68	0.15	1505512.11	3458681.20	40.709275	-103.845447
	3845.00	47.35	196.53	3187.46	509.08	-1782.43	-477.73	1.29	1505448.51	3458664.34	40.709102	-103.845512
	3935.00	46.04	195.32	3249.19	528.16	-1845.40	-495.71	1.75	1505385.21	3458647.54	40.708929	-103.845577
	4024.00	45.84	194.84	3311.08	545.89	-1907.15	-512.35	0.45	1505323.15	3458632.06	40.708759	-103.845637
	4114.00	46.31	197.08	3373.52	564.81	-1969.47	-530.17	1.87	1505260.52	3458615.40	40.708588	-103.845701
	4203.00	45.82	195.29	3435.27	583.76	-2031.01	-548.04	1.55	1505198.65	3458598.68	40.708419	-103.845766
	4293.00	46.82	196.47	3497.43	602.67	-2093.61	-565.86	1.46	1505135.73	3458582.04	40.708248	-103.845830
	4382.00	45.90	195.81	3558.85	621.67	-2155.48	-583.76	1.16	1505073.54	3458565.29	40.708078	-103.845895
	4472.00	45.65	194.27	3621.63	639.50	-2217.76	-600.50	1.26	1505010.96	3458549.72	40.707907	-103.845955
	4560.00	46.35	196.24	3682.76	657.23	-2278.83	-617.16	1.80	1504949.59	3458534.20	40.707739	-103.846015
	4650.00	46.06	194.61	3745.05	675.61	-2341.45	-634.44	1.35	1504886.66	3458518.10	40.707567	-103.846077
	4739.00	45.88	194.98	3806.91	693.04	-2403.31	-650.78	0.36	1504824.50	3458502.92	40.707397	-103.846136
	4829.00	46.50	195.81	3869.21	711.39	-2465.93	-668.02	0.96	1504761.58	3458486.85	40.707226	-103.846198
	4918.00	46.73	195.21	3930.34	729.78	-2528.25	-685.32	0.55	1504698.94	3458470.72	40.707055	-103.846261
	5007.00	46.54	194.82	3991.46	747.64	-2590.75	-702.08	0.38	1504636.15	3458455.12	40.706883	-103.846321
	5097.00	46.69	194.66	4052.28	765.39	-2654.00	-718.72	0.21	1504572.59	3458439.67	40.706709	-103.846381
	5186.00	45.94	194.38	4114.75	782.63	-2716.30	-734.86	0.87	1504510.00	3458424.70	40.706538	-103.846439
	5276.00	46.81	196.40	4176.84	801.03	-2779.11	-752.16	1.89	1504446.88	3458408.58	40.706366	-103.846502
	5365.00	46.70	196.19	4237.82	820.31	-2841.33	-770.35	0.21	1504384.33	3458391.55	40.706195	-103.846567
	5455.00	46.18	195.21	4299.84	839.06	-2904.12	-788.00	0.98	1504321.23	3458375.08	40.706023	-103.846631
	5545.00	46.75	195.65	4361.83	857.53	-2967.01	-805.36	0.73	1504258.02	3458358.90	40.705850	-103.846694
	5634.00	46.24	194.35	4423.10	875.34	-3029.36	-822.07	1.20	1504195.37	3458343.35	40.705679	-103.846754
	5724.00	46.79	196.13	4485.04	893.61	-3092.36	-839.23	1.56	1504132.07	3458327.37	40.705506	-103.846816
	5813.00	46.49	195.81	4546.15	912.51	-3154.57	-857.04	0.43	1504069.54	3458310.73	40.705335	-103.846880
	5903.00	46.20	195.82	4608.27	931.36	-3217.22	-874.78	0.32	1504006.57	3458294.15	40.705163	-103.846944
	5993.00	46.46	194.96	4670.42	949.74	-3279.98	-892.06	0.75	1503943.49	3458277.05	40.704991	-103.847006
	6082.00	46.88	196.02	4731.49	968.13	-3342.37	-909.35	0.99	1503880.79	3458261.93	40.704820	-103.847069

Comments	MD (ft)	Incl (°)	Azim True (°)	TVD (ft)	VSEC (ft)	NS (ft)	EW (ft)	DLS (°/100ft)	Northing (ftUS)	Easting (ftUS)	Latitude (°)	Longitude (°)
	6440.00	46.37	195.85	4976.18	1043.77	-3593.80	-980.58	1.14	1503628.08	3458195.41	40.704130	-103.847326
	6530.00	47.31	196.14	5037.74	1062.97	-3656.91	-998.67	1.07	1503564.65	3458178.50	40.703957	-103.847391
	6620.00	46.94	196.06	5098.98	1082.38	-3720.27	-1016.96	0.42	1503500.95	3458161.40	40.703783	-103.847457
	6709.00	47.38	196.53	5159.49	1101.79	-3782.91	-1035.27	0.63	1503437.98	3458144.26	40.703611	-103.847523
	6799.00	47.22	196.14	5220.53	1121.51	-3846.38	-1053.88	0.36	1503374.17	3458126.85	40.703437	-103.847590
	6888.00	47.21	196.27	5280.98	1140.84	-3909.11	-1072.10	0.11	1503311.12	3458109.79	40.703264	-103.847656
	6978.00	47.02	195.93	5342.23	1160.24	-3972.46	-1090.39	0.35	1503247.43	3458092.69	40.703090	-103.847722
	7067.00	51.17	202.60	5400.53	1183.64	-4035.84	-1112.67	7.33	1503183.65	3458071.60	40.702917	-103.847802
	7157.00	57.09	214.28	5453.36	1219.62	-4099.62	-1147.53	12.39	1503119.23	3458037.94	40.702741	-103.847928
	7247.00	60.91	224.08	5499.79	1269.40	-4159.22	-1196.27	10.25	1503058.74	3457990.32	40.702578	-103.848103
	7336.00	63.10	232.29	5541.62	1328.85	-4211.50	-1254.80	8.51	1503005.37	3457932.77	40.702434	-103.848315
	7426.00	64.31	238.32	5581.52	1395.95	-4257.38	-1321.11	6.15	1502958.26	3457867.33	40.702308	-103.848554
	7515.00	64.61	239.67	5619.89	1465.50	-4298.74	-1389.94	1.41	1502915.62	3457799.29	40.702195	-103.848802
	7605.00	70.42	241.93	5654.30	1538.77	-4339.26	-1462.51	6.86	1502873.75	3457727.49	40.702084	-103.849064
	7695.00	76.20	245.36	5680.14	1616.65	-4377.48	-1539.73	7.39	1502834.11	3457651.00	40.701979	-103.849342
	7784.00	82.36	250.05	5696.70	1698.09	-4410.59	-1620.59	8.64	1502799.49	3457570.77	40.701888	-103.849634
	7874.00	88.29	254.57	5704.03	1783.95	-4437.81	-1706.00	8.27	1502770.67	3457485.89	40.701813	-103.849942
Cross Setback Heel (52' FSL, 2550' FWL)	7897.25	88.87	256.10	5704.61	1806.54	-4443.70	-1728.48	7.05	1502764.37	3457463.52	40.701797	-103.850023
	7963.00	90.53	260.43	5704.95	1871.12	-4457.07	-1792.84	7.05	1502749.80	3457399.43	40.701760	-103.850255
	8053.00	90.58	260.40	5704.08	1960.11	-4472.05	-1881.58	0.06	1502733.16	3457310.98	40.701719	-103.850575
	8142.00	90.83	260.36	5702.98	2048.10	-4486.92	-1969.32	0.28	1502716.66	3457223.54	40.701678	-103.850891
	8232.00	90.60	260.46	5701.86	2137.09	-4501.92	-2058.05	0.28	1502700.01	3457135.10	40.701637	-103.851211
	8322.00	90.32	262.73	5701.14	2226.33	-4515.07	-2147.08	2.54	1502685.19	3457046.34	40.701601	-103.851533
	8411.00	90.66	264.88	5700.38	2314.96	-4524.67	-2235.55	2.45	1502673.94	3456958.06	40.701575	-103.851852
	8500.00	90.49	267.15	5699.48	2403.83	-4530.86	-2324.32	2.56	1502666.10	3456869.42	40.701558	-103.852172
	8590.00	91.01	267.25	5698.31	2493.78	-4535.25	-2414.21	0.59	1502660.03	3456779.63	40.701546	-103.852496
	8679.00	91.12	268.41	5696.65	2582.74	-4538.62	-2503.13	1.31	1502655.00	3456690.79	40.701536	-103.852817
	8768.00	90.85	268.19	5695.12	2671.72	-4541.26	-2592.08	0.39	1502650.70	3456601.91	40.701529	-103.853137
	8858.00	91.03	268.11	5693.64	2761.70	-4544.17	-2682.02	0.22	1502646.11	3456512.04	40.701521	-103.853462
	8947.00	91.41	268.28	5691.75	2850.67	-4546.97	-2770.95	0.47	1502641.65	3456423.17	40.701513	-103.853783
	9037.00	91.41	269.19	5689.54	2940.64	-4548.96	-2860.90	1.01	1502637.98	3456333.28	40.701508	-103.854107
	9127.00	91.34	268.63	5687.38	3030.62	-4550.67	-2950.86	0.63	1502634.59	3456243.37	40.701503	-103.854431
	9216.00	91.08	268.80	5685.50	3119.59	-4552.66	-3039.82	0.35	1502630.94	3456154.47	40.701498	-103.854752
	9305.00	91.03	269.00	5683.86	3208.58	-4554.37	-3128.79	0.23	1502627.57	3456065.55	40.701493	-103.855073
	9395.00	91.47	268.88	5681.89	3298.56	-4556.04	-3218.75	0.51	1502624.22	3455975.63	40.701488	-103.855398
	9484.00	91.43	269.60	5679.64	3387.53	-4557.22	-3307.71	0.81	1502621.38	3455886.71	40.701485	-103.855718
	9574.00	91.03	269.35	5677.71	3477.50	-4558.04	-3397.69	0.52	1502618.88	3455796.76	40.701483	-103.856043
	9663.00	90.15	269.33	5676.79	3566.50	-4559.07	-3486.68	0.99	1502616.19	3455707.81	40.701480	-103.856364
	9753.00	90.07	269.07	5676.62	3656.50	-4560.32	-3576.67	0.30	1502613.25	3455617.86	40.701476	-103.856688
	9843.00	89.30	269.44	5677.12	3746.49	-4561.49	-3666.66	0.95	1502610.40	3455527.91	40.701473	-103.857013
	9932.00	89.92	269.75	5677.72	3835.48	-4562.12	-3756.65	0.78	1502608.11	3455438.94	40.701471	-103.857334
	10021.00	89.70	269.53	5678.02	3924.48	-4562.68	-3846.65	0.35	1502605.89	3455349.97	40.701470	-103.857655
	10111.00	89.85	269.72	5678.37	4014.47	-4563.27	-3936.65	0.27	1502603.62	3455260.00	40.701468	-103.857979
	10201.00	89.67	269.84	5678.75	4104.46	-4563.62	-4026.65	0.24	1502601.59	3455170.03	40.701467	-103.858304
	10290.00	89.19	269.50	5679.63	4193.45	-4564.13	-4113.64	0.66	1502599.42	3455081.06	40.701466	-103.858625
	10380.00	89.83	269.61	5680.40	4283.44	-4564.83	-4203.63	0.72	1502597.04	3454991.10	40.701464	-103.858950
	10469.00	89.61	269.51	5680.84	4372.44	-4565.51	-4292.63	0.27	1502594.69	3454902.13	40.701462	-103.859270
	10559.00	89.52	269.83	5681.52	4462.43	-4566.03	-4382.62	0.37	1502592.49	3454812.16	40.701460	-103.859595
	10648.00	89.48	269.49	5682.30	4551.42	-4566.56	-4471.62	0.38	1502590.30	3454723.19	40.701459	-103.859916
	10737.00	89.78	269.60	5682.87	4640.41	-4567.26	-4560.62	0.36	1502587.94	3454634.23	40.701457	-103.860237
	10827.00	89.19	268.41	5683.68	4730.41	-4568.83	-4650.60	1.48	1502584.69	3454544.29	40.701452	-103.860561
	10916.00	90.12	269.76	5684.22	4820.40	-4569.25	-4739.58	1.84	1502581.61	3454455.35	40.701449	-103.860882
	11005.00	89.55	268.57	5684.73	4908.40	-4572.86	-4828.56	0.74	1502575.66	3454366.40	40.701441	-103.861203
	11185.00	89.54	269.07	5685.45	5008.39	-4574.71	-4917.51	0.56	1502572.13	3454277.45	40.701436	-103.861524
	11274.00	90.00	268.84	5685.80	5177.39	-4576.33	-5006.46	0.58	1502568.84	3454188.50	40.701432	-103.861845
	11364.00	89.89	268.77	5685.89	5267.39	-4578.21	-5095.41	0.14	1502565.28	3454099.55	40.701426	-103.862166
	11453.00	89.58	268.97	5686.30	5356.39	-4579.97	-5184.36	0.41	1502561.87	3454010.60	40.701422	-103.862487
	11543.00	89.47	269.11	5687.05	5446.39	-4581.47	-5273.31	0.20	1502558.68	3453921.65	40.701417	-103.862808
	11632.00	89.33	269.30	5687.98	5535.38	-4582.71	-5362.26	0.27	1502555.78	3453832.70	40.701414	-103.863129
	11721.00	90.30	269.38	5688.27	5624.38	-4583.73	-5451.21	1.09	1502553.10	3453743.75	40.701411	-103.863450
	11811.00	89.71	269.24	5688.26	5714.38	-4584.82	-5540.16	0.67	1502550.33	3453654.80	40.701408	-103.863771
	11901.00	89.30	269.27	5689.04	5804.37	-4585.99	-5629.11	0.46	1502547.48	3453565.85	40.701405	-103.864092
	11990.00	89.67	269.46	5689.84	5893.37	-4586.97	-5718.06	0.47	1502544.83	3453476.90	40.701402	-103.864413
	12080.00	89.31	269.11	5690.64	5983.36	-4588.10	-5807.01	0.56	1502542.03	3453387.95	40.701399	-103.864734
	12169.00	90.05	270.01	5691.14	6072.35	-4588.78	-5896.00	1.31	1502539.68	3453299.00	40.701397	-103.865055
	12259.00	90.03	269.76	5691.07	6162.34	-4589.96	-5985.00	0.28	1502537.82	3453210.05	40.701396	-103.865376
	12349.00	90.09	269.49	5690.98	6252.34	-4589.55	-6074.00	0.31	1502535.55	3453121.10	40.701395	-103.865697
	12438.00	89.24	268.86	5691.50	6341.33	-4590.83	-6163.00	1.19	1502532.61	3452932.15	40.701391	-103.866018
	12528.00	90.44	269.57	5691.75	6431.33	-4592.06	-6252.00	1.55	1502529.70	3452843.20	40.701388	-103.866339
	12617.00	89.76	269.21	5691.59	6520.33	-4593.01	-6341.00	0.86	1502527.09	3452754.25	40.701385	-103.866660
	12706.00	89.72	269.43	5692.00	6609.33	-4594.07	-6430.00	0.25	1502524.37	3452665.30	40.701382	-103.866981
	12796.00	89.57	268.79	5692.56	6699.32	-4595.47	-6519.35	0.73	1502521.29	3452576.35	40.701378	-103.867302
	12886.00	90.14	269.78	5692.78	6789.32	-4596.59	-6608.70	1.27	1502518.49	3452487.40	40.701375	-103.867623
	12975.00	89.61	269.43	5692.96	6878.31	-4597.20	-6698.34	0.71	1502516.21	3452398.45	40.701373	-103.867944
	13065.00	89.56	268.64	5693.63	6968.31	-4598.72	-6788.34	0.88	1502513.02	3452309.50	40.701369	-103.868265
	13154.00	89.68	268.93	5694.22	7057.31	-4600.61	-6877.30	0.35	1502509.47	3452220.55	40.701364	-103.868586
	13244.00	89.96	269.70	5694.50	7147.31	-4601.68	-6966.26	0.91	1502506.71	345		

Comments	MD (ft)	Incl (°)	Azim True (°)	TVD (ft)	VSEC (ft)	NS (ft)	EW (ft)	DLS (°/100ft)	Northing (ftUS)	Easting (ftUS)	Latitude (°)	Longitude (°)
	16021.00	89.00	268.51	5713.75	9924.14	-4661.98	-9843.49	1.73	1502394.58	3449354.11	40.701193	-103.879290
	16111.00	88.68	268.21	5715.57	10014.11	-4664.55	-9933.43	0.49	1502390.32	3449264.23	40.701185	-103.879614
	16201.00	88.92	268.78	5717.46	10104.09	-4666.91	-10023.38	0.69	1502386.28	3449174.34	40.701179	-103.879938
	16290.00	89.36	268.71	5718.79	10193.08	-4668.86	-10112.35	0.50	1502382.67	3449085.43	40.701173	-103.880259
	16380.00	89.40	269.06	5719.77	10283.07	-4670.61	-10202.33	0.39	1502379.24	3448995.50	40.701168	-103.880584
	16469.00	89.30	269.23	5720.78	10372.07	-4671.94	-10291.31	0.22	1502376.25	3448906.55	40.701165	-103.880905
	16559.00	89.31	269.13	5721.87	10462.06	-4673.23	-10381.30	0.11	1502373.28	3448816.61	40.701161	-103.881229
	16648.00	89.47	269.15	5722.82	10551.05	-4674.57	-10470.28	0.18	1502370.28	3448727.67	40.701157	-103.881550
	16738.00	89.67	269.36	5723.49	10641.05	-4675.74	-10560.27	0.32	1502367.43	3448637.72	40.701154	-103.881875
	16827.00	89.51	269.42	5724.13	10730.04	-4676.68	-10649.26	0.19	1502364.82	3448548.76	40.701151	-103.882196
	16916.00	89.37	269.49	5725.00	10819.04	-4677.53	-10738.26	0.18	1502362.32	3448459.80	40.701149	-103.882517
	17006.00	89.81	269.55	5725.64	10909.03	-4678.28	-10828.25	0.49	1502359.88	3448369.84	40.701147	-103.882841
	17096.00	89.53	269.34	5726.16	10999.03	-4679.16	-10918.24	0.39	1502357.33	3448279.87	40.701144	-103.883166
	17186.00	89.27	268.75	5727.10	11089.02	-4680.66	-11008.23	0.72	1502354.15	3448189.94	40.701140	-103.883490
	17275.00	89.44	269.14	5728.10	11178.02	-4682.29	-11097.21	0.48	1502350.85	3448101.01	40.701135	-103.883811
	17365.00	89.40	269.23	5729.02	11268.01	-4683.57	-11187.19	0.11	1502347.89	3448011.06	40.701132	-103.884136
	17454.00	89.64	269.52	5729.76	11357.01	-4684.55	-11276.18	0.42	1502345.26	3447922.10	40.701129	-103.884457
	17544.00	89.25	269.49	5730.63	11447.00	-4685.32	-11366.18	0.43	1502342.80	3447832.14	40.701127	-103.884781
	17633.00	89.51	268.96	5731.60	11535.99	-4686.53	-11455.16	0.66	1502339.93	3447743.20	40.701123	-103.885102
	17723.00	89.33	268.55	5732.51	11625.99	-4688.48	-11545.14	0.50	1502336.30	3447653.28	40.701118	-103.885427
	17812.00	89.42	268.73	5733.48	11714.98	-4690.59	-11634.10	0.23	1502332.52	3447564.36	40.701112	-103.885747
	17902.00	89.63	268.91	5734.22	11804.97	-4692.45	-11724.08	0.31	1502328.99	3447474.44	40.701107	-103.886072
	17992.00	89.82	269.47	5734.66	11894.97	-4693.72	-11814.07	0.66	1502326.04	3447384.49	40.701103	-103.886397
	18081.00	89.97	269.50	5734.82	11983.97	-4694.52	-11903.07	0.17	1502323.58	3447295.52	40.701101	-103.886717
	18171.00	89.34	268.99	5735.36	12073.97	-4695.71	-11993.06	0.90	1502320.71	3447205.57	40.701097	-103.887042
	18260.00	90.04	269.17	5735.84	12162.96	-4697.13	-12082.04	0.81	1502317.62	3447116.63	40.701093	-103.887363
	18350.00	89.47	269.41	5736.23	12252.96	-4698.25	-12172.02	0.69	1502314.82	3447026.67	40.701090	-103.887688
	18439.00	89.30	268.87	5737.18	12341.96	-4699.59	-12261.04	0.64	1502311.83	3446937.73	40.701086	-103.888008
	18529.00	89.54	269.24	5738.09	12431.95	-4701.07	-12351.00	0.49	1502308.66	3446848.79	40.701082	-103.888333
	18618.00	89.56	269.32	5738.79	12520.95	-4702.19	-12439.99	0.09	1502305.88	3446758.84	40.701079	-103.888654
	18708.00	89.22	269.11	5739.75	12610.94	-4703.42	-12529.98	0.44	1502302.97	3446668.89	40.701075	-103.888978
	18798.00	89.57	269.10	5740.70	12700.94	-4704.83	-12619.96	0.39	1502299.88	3446578.95	40.701072	-103.889303
	18887.00	89.52	268.83	5741.41	12789.93	-4706.43	-12709.95	0.31	1502296.61	3446490.02	40.701067	-103.889624
	18977.00	89.37	268.62	5742.28	12879.93	-4708.44	-12799.92	0.29	1502293.32	3446400.10	40.701061	-103.889948
	19066.00	89.44	268.87	5743.20	12969.92	-4710.39	-12889.89	0.29	1502289.32	3446311.18	40.701056	-103.890269
	19156.00	89.45	268.90	5744.08	13059.92	-4712.14	-12979.87	0.04	1502285.89	3446221.25	40.701051	-103.890594
	19245.00	89.44	269.16	5744.94	13147.91	-4713.64	-13069.86	0.29	1502282.72	3446132.31	40.701047	-103.890915
	19335.00	89.47	269.21	5745.79	13237.91	-4714.92	-13159.84	0.06	1502279.76	3446042.36	40.701043	-103.891239
	19424.00	89.60	269.18	5746.52	13326.90	-4716.17	-13249.83	0.15	1502276.85	3445953.41	40.701039	-103.891560
	19514.00	89.61	269.14	5747.14	13416.90	-4717.49	-13339.82	0.05	1502273.85	3445863.47	40.701036	-103.891885
	19603.00	89.93	269.11	5747.49	13505.90	-4718.85	-13429.81	0.36	1502270.83	3445774.52	40.701032	-103.892206
	19693.00	89.56	269.57	5747.89	13595.90	-4719.89	-13519.80	0.66	1502268.11	3445684.56	40.701029	-103.892530
	19782.00	89.48	269.21	5748.64	13684.89	-4720.84	-13609.79	0.41	1502265.50	3445595.61	40.701026	-103.892851
	19872.00	89.38	268.82	5749.54	13774.89	-4722.38	-13699.77	0.45	1502262.27	3445505.67	40.701022	-103.893176
	19961.00	89.27	268.72	5750.58	13863.88	-4724.29	-13789.75	0.17	1502258.70	3445416.75	40.701016	-103.893496
	20051.00	89.56	269.23	5751.50	13953.88	-4725.90	-13879.73	0.65	1502255.41	3445326.82	40.701012	-103.893821
	20140.00	89.51	268.93	5752.23	14042.87	-4727.33	-13969.71	0.34	1502252.32	3445237.87	40.701008	-103.894142
	20230.00	89.30	269.10	5753.16	14132.87	-4728.88	-14059.70	0.30	1502249.09	3445147.94	40.701003	-103.894466
	20319.00	89.04	269.25	5754.45	14221.86	-4730.16	-14149.68	0.34	1502246.15	3445059.00	40.701000	-103.894787
	20409.00	88.96	269.32	5756.02	14311.84	-4731.28	-14239.66	0.12	1502243.35	3444969.06	40.700996	-103.895112
	20498.00	88.90	268.93	5757.68	14400.83	-4732.64	-14329.63	0.44	1502240.33	3444880.12	40.700993	-103.895433
	20588.00	88.58	268.78	5759.66	14490.81	-4734.44	-14419.59	0.39	1502236.85	3444790.21	40.700988	-103.895757
	20678.00	88.86	268.84	5761.67	14580.78	-4736.31	-14499.55	0.32	1502233.30	3444700.31	40.700982	-103.896082
Cross Setback Toe (342' FSL, 300' FWL)	20699.51	88.90	268.86	5762.09	14602.29	-4736.74	-14521.05	0.22	1502232.47	3444678.82	40.700981	-103.896159
Last SLB MWD Survey Projection to TD (341' FSL, 199' FWL)	20767.00	89.03	268.94	5763.31	14669.77	-4738.03	-14588.52	0.22	1502229.92	3444611.39	40.700977	-103.896402
	20800.00	89.03	268.94	5763.87	14702.76	-4738.64	-14621.51	0.00	1502228.69	3444578.42	40.700976	-103.896521

Survey Type: Def Survey

Survey Error Model: ISCWSA Rev 3 *** 3-D 95.000% Confidence 2.7955 sigma
 Survey Program:

Description	Part	MD From (ft)	MD To (ft)	EOU Freq (ft)	Hole Size (in)	Casing Diameter (in)	Survey Tool Type	Borehole / Survey
	1	0.000	6.000	1/98.425	13.500	9.625	A001Mb_MWD-Depth Only	Speed Goat Fed 3432-09H / Speed Goat Fed 3432-09H
	1	6.000	21.000	Act Stns	13.500	9.625	A001Mb_MWD-Depth Only	Speed Goat Fed 3432-09H / Speed Goat Fed 3432-09H
	1	21.000	1545.000	Act Stns	13.500	9.625	A001Mb_MWD	Speed Goat Fed 3432-09H / Speed Goat Fed 3432-09H
	1	1545.000	20800.000	Act Stns	8.500	5.500	A010Mb_MWD+IFR1+SAG+MS	Speed Goat Fed 3432-09H / Speed Goat Fed 3432-09H IFR1+MS+SAG 0' to 20800'

...Speed Goat Fed 3432-09H/Speed Goat Fed 3432-09H IFR1+MS+SAG 0' to 20800' Definitive