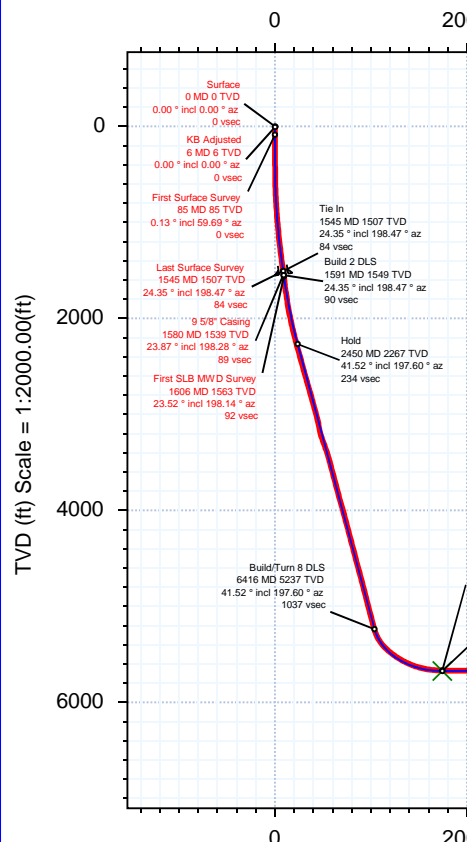
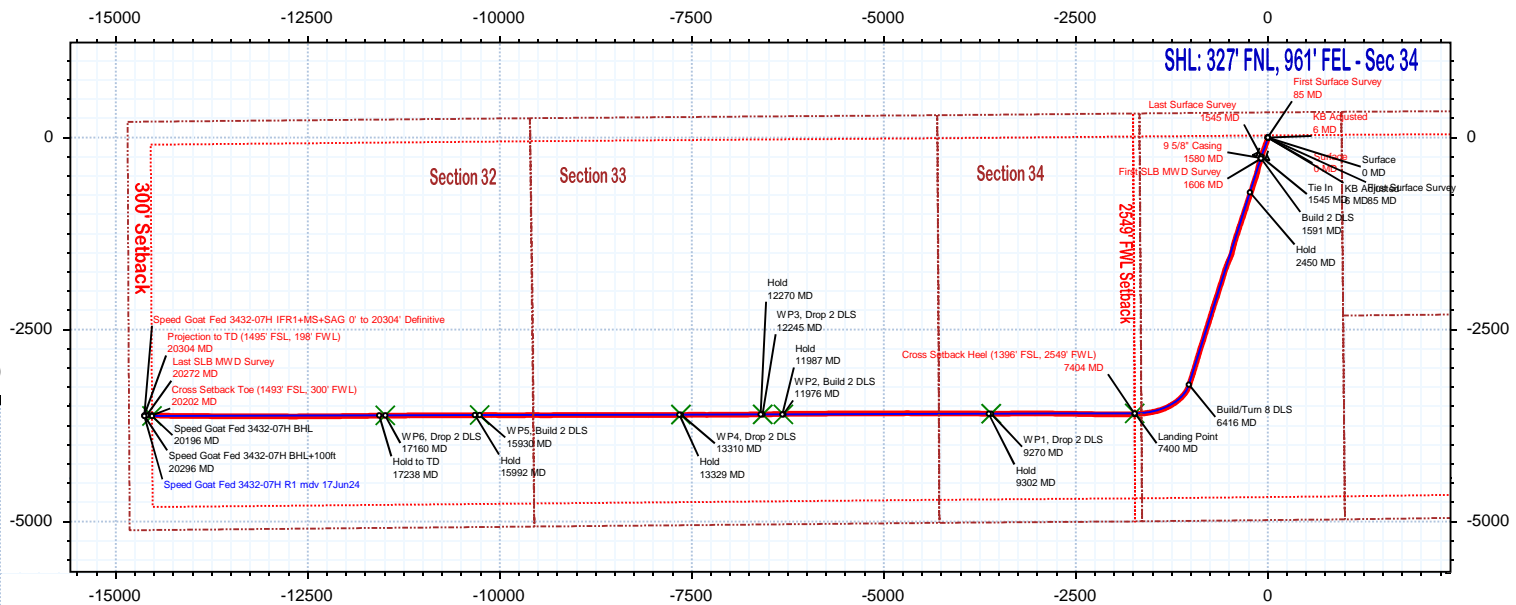
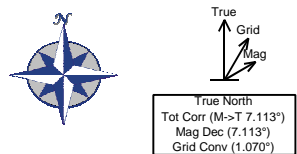


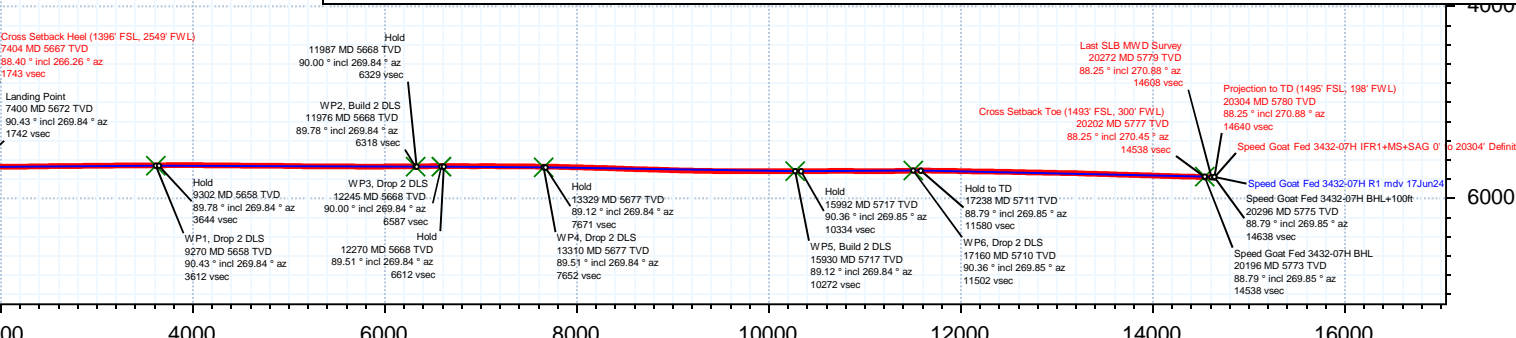
<b>Borehole:</b> Speed Goat Fed 3432-07H	<b>Well:</b> Speed Goat Fed 3432-07H	<b>Field:</b> CO, Weld County (NAD 83 NZ) - 2019	<b>Structure:</b> Verdad Resources 34-09N-58W (Speed Goat 3432-3435 Pad)
---	---	---	---

<b>Gravity &amp; Magnetic Parameters</b>			<b>Surface Location</b>			<b>Miscellaneous</b>		
Model: HDGM 2024	Dip: 66.847°	Date: 24-Jun-2024	Lat: N 40 42 50.70	Northing: 1507271.57ftUS	Grid Conv: 1.0701°	Slot: Speed Goat Fed 3432-07H	TVD Ref: RKB(4743ft above Mean Sea Level)	
MagDec: 7.113°	FS: 51811.102mT	Gravity FS: 999.096mg (9.80665 Based)	Lon: W 103 50 37.64	Easting: 3459107.81ftUS	Scale Fact: 0.9999895	Plan: Speed Goat Fed 3432-07H IFR1+MS+SAG 0' to 20304' Definitive		

EW (ft) Scale = 1:2500.00(ft)



Critical Point	MD	INCL	AZIM	TVD	VSEC	N(+)/S(-)	E(+)/W(-)	DLS
Surface	0.00	0.00	0.00	0.00	0.00	0.00	0.00	
KB Adjusted	6.00	0.00	0.00	6.00	0.00	0.00	0.00	0.00
First Surface Survey	85.00	0.13	59.69	85.00	-0.08	0.05	0.08	0.16
Last Surface Survey	1545.00	24.35	198.47	1506.92	83.96	-251.67	-83.26	1.33
9 5/8\"/>								



Vertical Section (ft) Azim = 269.84° Scale = 1:2000.00(ft) Origin = 0N/-S, 0E/-W



# Speed Goat Fed 3432-07H IFR1+MS+SAG 0' to 20304' Definitive Survey

## Geodetic Report

(Def Survey)



**Report Date:** July 08, 2024 - 09:49 AM  
**Client:** Verdad Resources  
**Field:** CO, Weld County (NAD 83 NZ) - 2019  
**Structure / Slot:** Verdad Resources 34-09N-58W (Speed Goat 3432-3435 Pad) / Speed Goat Fed 3432-07H  
**Well:** Speed Goat Fed 3432-07H  
**Borehole:** Speed Goat Fed 3432-07H  
**UWI / API#:** Unknown / Unknown  
**Survey Name:** Speed Goat Fed 3432-07H IFR1+MS+SAG 0' to 20304' Definitive  
**Survey Date:** May 08, 2024  
**Tort / AHD / DDI / ERD Ratio:** 319.260 ° / 17135.161 ft / 7.284 / 2.964  
**Coordinate Reference System:** NAD83 Colorado State Plane, Northern Zone, US Feet  
**Location Lat / Long:** N 40° 42' 50.69518", W 103° 50' 37.64406"  
**Location Grid N/E Y/X:** N 1507271.570 ftUS, E 3459107.810 ftUS  
**CRS Grid Convergence Angle:** 1.0701 °  
**Grid Scale Factor:** 0.9999895  
**Version / Patch:** 2.10.836.0

**Survey / DLS Computation:** Minimum Curvature / Lubinski  
**Vertical Section Azimuth:** 269.840 ° (True North)  
**Vertical Section Origin:** 0.000 ft, 0.000 ft  
**TVD Reference Datum:** RKB  
**TVD Reference Elevation:** 4743.000 ft above Mean Sea Level  
**Seabed / Ground Elevation:** 4722.000 ft above Mean Sea Level  
**Magnetic Declination:** 7.113 °  
**Total Gravity Field Strength:** 999.0960mgn (9.80665 Based)  
**Gravity Model:** GARM  
**Total Magnetic Field Strength:** 51811.102 nT  
**Magnetic Dip Angle:** 66.847 °  
**Declination Date:** June 24, 2024  
**Magnetic Declination Model:** HDGM 2024  
**North Reference:** True North  
**Grid Convergence Used:** 0.0000 °  
**Total Corr Mag North->True North:** 7.1133 °  
**Local Coord Referenced To:** Well Head

Comments	MD (ft)	Incl (°)	Azim True (°)	TVD (ft)	VSEC (ft)	NS (ft)	EW (ft)	DLS (°/100ft)	Northing (ftUS)	Easting (ftUS)	Latitude (°)	Longitude (°)
Surface	0.00	0.00	0.00	0.00	0.00	0.00	0.00	N/A	1507271.57	3459107.81	40.714082	-103.843790
KB Adjusted	6.00	0.00	0.00	6.00	0.00	0.00	0.00	0.00	1507271.57	3459107.81	40.714082	-103.843790
First Surface Survey	85.00	0.13	59.69	85.00	-0.08	0.05	0.08	0.16	1507271.62	3459107.89	40.714082	-103.843790
	176.00	0.09	321.34	176.00	-0.12	0.15	0.12	0.19	1507271.73	3459107.93	40.714082	-103.843790
	267.00	0.44	174.03	267.00	-0.11	-0.14	0.11	0.57	1507271.43	3459107.93	40.714082	-103.843790
	358.00	1.32	188.36	357.99	0.01	-1.52	0.00	0.99	1507270.05	3459107.84	40.714078	-103.843790
	448.00	2.81	185.64	447.93	0.38	-4.74	-0.37	1.66	1507266.82	3459107.53	40.714069	-103.843791
	537.00	4.26	192.93	536.76	1.35	-10.14	-1.32	1.70	1507261.41	3459106.68	40.714054	-103.843795
	627.00	6.59	190.91	626.35	3.10	-18.47	-3.05	2.60	1507253.05	3459105.11	40.714031	-103.843801
	716.00	8.96	197.94	714.52	6.24	-30.08	-6.15	2.86	1507241.38	3459102.22	40.713999	-103.843812
	806.00	10.90	198.82	803.17	11.18	-44.80	-11.06	2.16	1507226.57	3459097.59	40.713959	-103.843830
	895.00	11.65	199.26	890.45	16.91	-61.25	-16.73	0.85	1507210.02	3459092.22	40.713914	-103.843850
	984.00	13.67	199.44	977.28	23.42	-79.65	-23.20	2.27	1507191.50	3459086.10	40.713863	-103.843874
	1074.00	15.64	200.05	1064.35	31.18	-101.08	-30.90	2.20	1507169.93	3459078.80	40.713805	-103.843901
	1163.00	16.74	199.79	1149.82	39.70	-124.41	-39.35	1.24	1507146.45	3459070.79	40.713741	-103.843932
	1253.00	18.02	200.49	1235.71	49.03	-149.65	-48.61	1.44	1507121.04	3459062.00	40.713671	-103.843965
	1342.00	20.61	199.44	1319.69	59.14	-177.32	-58.65	2.94	1507093.19	3459052.49	40.713595	-103.844002
	1431.00	22.28	197.85	1402.53	69.61	-208.15	-69.03	1.99	1507062.17	3459042.68	40.713511	-103.844039
	1521.00	24.65	198.20	1485.08	80.80	-242.22	-80.13	2.64	1507027.89	3459032.22	40.713417	-103.844079
Last Surface Survey	1545.00	24.35	198.47	1506.92	83.96	-251.67	-83.26	1.33	1507018.39	3459029.27	40.713391	-103.844090
9 5/8" Casing First SLB MWD Survey	1580.00	23.87	198.28	1538.87	88.51	-265.24	-87.76	1.38	1507004.74	3459025.02	40.713354	-103.844107
	1606.00	23.52	198.14	1562.68	91.80	-275.17	-91.03	1.38	1506994.75	3459021.94	40.713327	-103.844118
	1696.00	24.25	190.59	1644.99	100.89	-310.41	-100.02	3.49	1506959.35	3459013.61	40.713230	-103.844151
	1785.00	27.87	201.31	1724.97	111.92	-347.79	-110.95	6.66	1506921.78	3459003.38	40.713127	-103.844190
	1875.00	31.27	191.94	1803.28	124.53	-390.27	-123.44	6.37	1506879.06	3458991.68	40.713011	-103.844235
	1964.00	34.15	193.54	1878.16	135.29	-437.17	-134.07	3.38	1506831.98	3458981.93	40.712892	-103.844274
	2054.00	36.09	197.42	1951.78	149.28	-487.03	-147.92	3.29	1506781.87	3458969.01	40.712745	-103.844324
	2144.00	36.00	196.41	2024.55	164.83	-537.70	-163.33	0.67	1506730.92	3458954.55	40.712606	-103.844379
	2234.00	35.54	198.64	2097.58	180.80	-587.86	-179.16	1.54	1506680.48	3458939.66	40.712468	-103.844436
	2323.00	38.52	198.21	2168.62	197.88	-638.70	-196.09	3.36	1506629.32	3458923.68	40.712329	-103.844497
	2412.00	39.61	197.86	2237.72	215.39	-692.04	-213.46	1.25	1506575.68	3458907.32	40.712183	-103.844560
	2502.00	41.13	198.28	2306.29	233.63	-747.45	-231.54	1.72	1506519.93	3458890.27	40.712030	-103.844625
	2591.00	41.75	198.73	2373.01	252.48	-803.31	-250.24	0.77	1506463.74	3458872.62	40.711877	-103.844693
	2681.00	42.21	197.63	2439.91	271.42	-860.50	-269.02	0.96	1506406.20	3458854.92	40.711720	-103.844760
	2771.00	41.21	196.84	2507.10	289.32	-917.69	-286.76	1.26	1506348.69	3458838.24	40.711563	-103.844824
	2860.00	41.14	200.14	2574.10	308.05	-973.25	-305.34	2.44	1506292.80	3458820.71	40.711411	-103.844891
	2950.00	42.36	197.11	2641.25	327.33	-1030.03	-324.45	2.62	1506235.68	3458802.65	40.711255	-103.844960
	3039.00	40.84	199.45	2707.80	346.00	-1086.13	-342.97	2.44	1506179.24	3458785.19	40.711101	-103.845027
	3129.00	42.17	198.71	2775.20	365.65	-1142.50	-362.46	1.58	1506122.52	3458766.76	40.710946	-103.845097
	3218.00	41.54	197.01	2841.49	384.02	-1199.01	-380.68	1.46	1506065.67	3458749.60	40.710791	-103.845163
	3308.00	41.38	199.23	2908.95	402.71	-1255.64	-399.20	1.64	1506008.71	3458732.13	40.710636	-103.845230
	3398.00	42.32	197.20	2975.99	421.63	-1312.67	-417.96	1.83	1505951.34	3458714.44	40.710479	-103.845298
	3487.00	41.77	196.63	3042.08	439.13	-1369.70	-435.31	0.75	1505894.00	3458698.17	40.710323	-103.845360
	3577.00	40.39	191.76	3109.94	453.81	-1426.99	-449.83	3.87	1505836.45	3458684.71	40.710165	-103.845413
	3667.00	42.77	194.01	3177.26	467.32	-1485.19	-464.83	3.12	1505778.00	3458672.46	40.710005	-103.845461
	3756.00	43.58	201.53	3242.21	486.07	-1543.09	-481.76	5.85	1505719.77	3458654.96	40.709847	-103.845528
	3846.00	42.00	204.12	3308.26	509.92	-1599.44	-505.45	2.63	1505662.99	3458632.32	40.709692	-103.845613
	3935.00	42.33	201.61	3374.23	533.28	-1654.48	-528.66	1.93	1505607.53	3458610.15	40.709541	-103.845697
	4025.00	42.13	199.17	3440.88	554.51	-1711.17	-549.73	1.84	1505550.46	3458590.14	40.709385	-103.845773
	4114.00	41.71	196.57	3507.10	572.92	-1767.75	-567.98	2.01	1505493.55	3458572.95	40.709230	-103.845839
	4204.00	41.75	197.23	3574.27	590.49	-1825.06	-585.40	0.49	1505435.92	3458556.61	40.709073	-103.845902
	4293.00	41.62	197.55	3640.74	608.34	-1881.55	-603.09	0.28	1505379.11	3458539.98	40.708918	-103.845965
	4383.00	41.69	197.21	3707.98	626.37	-1938.63	-620.95	0.26	1505321.70	3458523.18	40.708761	-103.846030
	4472.00	41.44	197.31	3774.57	644.04	-1995.02	-638.47	0.29	1505265.00	3458506.71	40.708606	-103.846093
	4561.00	41.55	197.57	3841.23	661.87	-2051.28	-656.15	0.23	1505208.42	3458490.10	40.708452	-103.846157
	4650.00	41.61	199.02	3907.81	680.57	-2107.36	-674.69	1.08	1505152.01	3458472.61	40.708298	-103.846224
	4740.00	42.00	198.24	3974.90	699.89	-2164.21	-693.85	0.72	1505094.81	3458454.51	40.708142	-103.846293
	4829.00	42.28	197.08	4040.89	718.16	-2221.10	-711.96	0.93	1505037.58	3458437.46	40.707986	-103.846358
	4919.00	42.05	196.56	4107.60	735.81	-2278.93	-729.45	0.46	1504979.44	3458421.06	40.707827	-103.846421
	5008.00	41.62	197.71	4173.91	753.45	-2335.66	-746.93	0.99	1504922.40	3458404.64	40.707671	-103.846484
	5097.00	41.69	196.71	4240.41	771.11	-2392.16	-764.43	0.75	1504865.58	3458388.19	40.707516	-103.846547
	5187.00	41.15	197.60	4307.90	788.83	-2449.05	-781.99	0.89	1504808.37	3458371.70	40.707360	-103.846611
	5277.00	41.58	197.75	4375.45	807.05	-2505.72	-800.05	0.49	1504751.37	3458354.70	40.707204	-103.846676
	5366.00	40.99	196.76	4442.33	824.62	-2561.80	-817.47	0.99	1504694.98	3458338.33	40.707050	-103.846738
	5456.00	41.08	197.15	4510.21	842.01	-2618.32	-834.70	0.30	1504638.15	3458322.16	40.706895	-103.846801
	5545.00	40.83	198.40	4577.43	859.97	-2673.87	-852.51	0.96	1504582.28	3458305.40	40.706743	-103.846865
	5635.00	41.69	197.53	4645.09	878.43	-2730.33	-870.81	1.15	1504525.49	3458288.15	40.706588	-103.846931
	5724.00	41.80	197.17	4711.49	896.26	-2786.89	-888.48	0.30	1504468.61	3458271.54	40.706433	-103.846995
	5814.00	41.95	196.64	4778.50	913.89	-2844.37	-905.95	0.43	1504410.81	3458255.15	40.706275	-103.847058
	5904.00	41.68	197.09	4845.58	931.46	-2901.79	-923.36	0.45	1504353.08	3458238.82	40.706117	-103.847120
	5993.00	41.24	196.40	4912.28	948.60	-2958.22	-940.34	0.71	1504296.34	3458222.89	40.705962	-103.847182
	6083.00	41.49	196.97	4979.83	965.83	-3015.19	-957.42	0.50	1504239.06	3458206.88	40.705806	-103.847243
	6172.00	40.84										

Comments	MD (ft)	Incl (°)	Azim True (°)	TVD (ft)	VSEC (ft)	NS (ft)	EW (ft)	DLS (°/100ft)	Northing (ftUS)	Easting (ftUS)	Latitude (°)	Longitude (°)
	6441.00	41.43	200.06	5250.04	1038.00	-3238.84	-1028.96	2.38	1504014.12	3458139.53	40.705192	-103.847501
	6530.00	44.08	209.38	5315.45	1063.47	-3293.54	-1054.28	7.70	1503958.96	3458115.24	40.705042	-103.847592
	6620.00	49.25	219.80	5377.28	1100.88	-3347.12	-1091.54	10.18	1503904.69	3458078.99	40.704895	-103.847727
	6710.00	53.75	226.90	5433.34	1149.41	-3398.18	-1139.92	7.94	1503852.74	3458031.57	40.704755	-103.847901
	6799.00	57.38	234.02	5483.70	1206.14	-3444.77	-1196.52	7.75	1503805.09	3457975.85	40.704627	-103.848106
	6889.00	60.62	240.02	5530.08	1270.95	-3486.67	-1261.22	6.75	1503761.99	3457911.94	40.704512	-103.848339
	6978.00	63.90	245.56	5571.53	1341.08	-3522.62	-1321.25	6.63	1503724.75	3457842.60	40.704413	-103.848591
	7068.00	68.89	253.67	5607.60	1418.40	-3551.20	-1408.48	9.94	1503694.73	3457765.91	40.704335	-103.848870
	7158.00	74.63	258.50	5635.78	1501.37	-3571.68	-1491.40	8.16	1503672.70	3457683.39	40.704278	-103.849169
	7247.00	80.85	261.70	5654.67	1587.04	-3586.59	-1577.03	7.82	1503656.19	3457598.06	40.704238	-103.849478
	7337.00	86.72	264.94	5664.41	1675.88	-3596.98	-1665.84	7.44	1503644.15	3457509.45	40.704209	-103.849798
Cross Setback Heel (1396' FSL, 2549' FWL)	7403.88	88.40	266.26	5667.26	1742.52	-3602.11	-1732.46	3.19	1503637.78	3457442.94	40.704195	-103.850038
	7426.00	88.96	266.69	5667.77	1764.59	-3603.47	-1754.54	3.19	1503636.00	3457420.90	40.704191	-103.850118
	7516.00	89.28	269.75	5669.15	1854.53	-3606.27	-1844.47	3.42	1503631.53	3457331.04	40.704183	-103.850442
	7605.00	90.14	269.85	5669.60	1943.53	-3606.58	-1933.47	0.97	1503629.56	3457242.06	40.704183	-103.850763
	7695.00	89.76	270.35	5669.68	2033.53	-3606.42	-2023.47	0.70	1503628.03	3457152.07	40.704183	-103.851088
	7785.00	90.71	270.92	5669.31	2123.52	-3605.42	-2113.46	1.23	1503627.35	3457062.08	40.704186	-103.851413
	7874.00	90.64	271.16	5668.26	2212.49	-3603.81	-2202.44	0.28	1503627.30	3456973.09	40.704190	-103.851733
	7964.00	90.79	271.19	5667.14	2302.46	-3601.96	-2292.41	0.17	1503627.47	3456883.10	40.704195	-103.852058
	8053.00	91.03	271.22	5665.72	2391.43	-3600.09	-2381.38	0.27	1503627.68	3456794.11	40.704200	-103.852379
	8143.00	90.97	270.90	5664.15	2481.39	-3598.43	-2471.35	0.36	1503627.66	3456704.12	40.704205	-103.852703
	8232.00	90.39	270.06	5663.10	2570.38	-3597.68	-2560.34	1.15	1503626.75	3456615.14	40.704207	-103.853024
	8322.00	89.96	270.52	5662.82	2660.37	-3597.22	-2650.34	0.70	1503625.52	3456525.15	40.704208	-103.853349
	8412.00	91.05	271.75	5662.03	2750.35	-3595.44	-2740.32	1.83	1503625.62	3456435.16	40.704213	-103.853673
	8501.00	90.51	271.43	5660.82	2839.30	-3592.97	-2829.27	0.71	1503626.43	3456346.17	40.704220	-103.853994
	8591.00	89.94	269.69	5660.46	2929.28	-3592.09	-2919.26	2.03	1503625.63	3456256.18	40.704222	-103.854319
	8680.00	90.33	270.80	5660.25	3018.28	-3591.71	-3008.26	1.32	1503624.35	3456167.19	40.704223	-103.854640
	8769.00	91.14	269.27	5659.11	3107.27	-3591.66	-3097.25	1.95	1503622.74	3456078.22	40.704223	-103.854961
	8859.00	91.09	269.55	5657.36	3197.25	-3592.58	-3187.23	0.32	1503620.13	3455988.27	40.704221	-103.855285
	8948.00	90.37	269.57	5656.23	3286.24	-3593.27	-3276.22	0.81	1503617.79	3455899.31	40.704219	-103.855606
	9038.00	90.18	269.22	5655.80	3376.24	-3594.22	-3366.21	0.44	1503615.16	3455809.35	40.704216	-103.855931
	9127.00	90.59	270.21	5655.20	3465.23	-3594.66	-3455.21	1.20	1503613.05	3455720.38	40.704215	-103.856252
	9217.00	90.05	269.91	5654.70	3555.23	-3594.57	-3545.21	0.69	1503611.46	3455630.40	40.704215	-103.856576
	9306.00	90.22	270.07	5654.49	3644.23	-3594.58	-3634.21	0.26	1503609.79	3455541.43	40.704215	-103.856897
	9395.00	90.68	270.46	5653.79	3733.22	-3594.17	-3723.20	0.68	1503608.54	3455452.43	40.704216	-103.857218
	9485.00	90.64	270.21	5652.75	3823.21	-3593.64	-3813.19	0.28	1503607.38	3455362.44	40.704218	-103.857543
	9574.00	90.64	270.38	5651.76	3912.21	-3593.19	-3902.19	0.19	1503606.18	3455273.46	40.704219	-103.857864
	9664.00	89.28	270.47	5651.82	4002.20	-3592.52	-3992.18	1.51	1503605.16	3455183.47	40.704221	-103.858189
	9753.00	88.65	269.78	5653.43	4091.18	-3592.32	-4081.17	1.05	1503603.70	3455094.50	40.704221	-103.858509
	9843.00	88.72	269.33	5655.49	4181.16	-3593.02	-4171.14	0.51	1503601.32	3455004.55	40.704219	-103.858834
	9933.00	89.99	270.74	5656.50	4271.15	-3592.97	-4261.13	2.11	1503599.69	3454914.58	40.704219	-103.859159
	10022.00	89.68	270.38	5656.76	4360.14	-3592.10	-4350.13	0.53	1503598.90	3454825.58	40.704222	-103.859479
	10112.00	89.76	270.46	5657.20	4450.13	-3591.44	-4440.12	0.13	1503597.88	3454735.59	40.704223	-103.859804
	10201.00	89.16	270.04	5658.04	4539.13	-3591.05	-4529.12	0.82	1503596.60	3454646.61	40.704224	-103.860125
	10291.00	89.98	270.88	5658.72	4629.12	-3590.33	-4619.11	1.30	1503595.65	3454556.62	40.704226	-103.860450
	10380.00	89.62	269.61	5659.03	4718.11	-3589.95	-4708.11	1.48	1503594.37	3454467.63	40.704227	-103.860771
	10470.00	89.79	270.01	5659.49	4808.11	-3590.25	-4798.10	0.48	1503592.39	3454377.65	40.704226	-103.861095
	10559.00	89.19	269.78	5660.28	4897.11	-3590.41	-4887.10	0.72	1503590.56	3454288.68	40.704226	-103.861416
	10648.00	89.21	268.92	5661.52	4986.09	-3591.42	-4976.09	0.97	1503587.89	3454199.73	40.704223	-103.861737
	10738.00	88.76	269.28	5663.12	5076.07	-3592.83	-5066.06	0.64	1503584.80	3454109.80	40.704219	-103.862062
	10828.00	89.59	270.76	5664.41	5166.06	-3592.80	-5156.05	1.89	1503583.15	3454019.83	40.704219	-103.862386
	10917.00	89.26	270.31	5665.31	5255.05	-3591.97	-5245.04	0.63	1503582.32	3453930.84	40.704221	-103.862707
	11006.00	89.55	270.27	5666.23	5344.04	-3591.52	-5334.03	0.33	1503581.10	3453841.85	40.704223	-103.863028
	11096.00	89.94	270.92	5666.63	5433.03	-3590.58	-5423.03	0.84	1503580.36	3453751.86	40.704225	-103.863353
	11185.00	89.68	269.07	5666.93	5523.03	-3590.59	-5512.03	2.10	1503578.69	3453662.88	40.704225	-103.863674
	11275.00	90.24	269.12	5666.99	5613.02	-3592.01	-5603.01	0.62	1503575.59	3453572.93	40.704221	-103.863998
	11364.00	89.15	268.96	5667.46	5702.01	-3593.50	-5693.99	1.24	1503572.43	3453483.99	40.704217	-103.864319
	11454.00	89.44	270.01	5668.57	5792.00	-3594.31	-5783.98	1.21	1503569.94	3453394.04	40.704215	-103.864644
	11543.00	90.32	270.10	5668.76	5881.00	-3594.23	-5873.98	0.99	1503568.37	3453305.05	40.704215	-103.864965
	11633.00	90.95	269.40	5667.76	5970.99	-3594.62	-5963.97	1.05	1503566.29	3453215.08	40.704214	-103.865289
	11722.00	90.69	269.61	5666.49	6059.98	-3595.39	-6049.96	0.38	1503563.86	3453126.13	40.704211	-103.865610
	11812.00	90.41	269.43	5665.62	6149.97	-3596.14	-6139.95	0.37	1503561.43	3453036.17	40.704209	-103.865935
	11901.00	90.20	267.86	5665.15	6239.95	-3598.25	-6229.92	1.78	1503557.66	3452947.25	40.704204	-103.866256
	11991.00	89.84	268.52	5665.12	6329.91	-3601.09	-6318.88	0.84	1503553.14	3452857.37	40.704196	-103.866580
	12080.00	90.77	269.86	5664.64	6419.90	-3602.50	-6407.87	1.83	1503550.22	3452768.42	40.704192	-103.866901
	12170.00	90.97	269.47	5663.28	6509.89	-3602.87	-6497.85	0.49	1503548.01	3452678.46	40.704191	-103.867226
	12259.00	90.20	269.57	5662.37	6599.88	-3603.62	-6587.85	0.87	1503545.61	3452589.50	40.704189	-103.867547
	12349.00	89.63	269.46	5662.50	6689.88	-3604.38	-6677.84	0.65	1503543.16	3452499.53	40.704186	-103.867871
	12439.00	89.60	267.46	5663.11	6779.85	-3606.80	-6767.80	2.22	1503539.07	3452409.63	40.704180	-103.868196
	12528.00	89.29	269.19	5663.97	6869.81	-3609.40	-6857.76	1.97	1503534.80	3452320.74	40.704172	-103.868516
	12618.00	90.57	270.12	5664.08	6959.81	-3609.94	-6947.75	1.76	1503532.58	3452230.78	40.704171	-103.868841
	12707.00	90.37	270.15	5663.35	7049.80	-3609.73	-7037.75	0.23	1503531.13	3452141.79	40.704171	-103.869162
	12797.00	88.95	269.52	5663.88	7139.80	-3609.99	-7127.74	1.73	1503529.19	3452051.82	40.704171	-103.869487
	12886.00	89.97	269.72	5664.72	7229.79	-3610.58	-7217.74	1.17	1503526.94	3451962.85	40.704169	-103.869808
	12976.00	89.19	269.98	5665.38	7319.79	-3610.82	-7307.73	0.91	1503525.02	3451872.88	40.704168	-103.870132
	13066.00	89.64	270.70	5666.30	7409.78	-3610.29	-7397.73	0.94	1503523.87	3451782.89	40.704170	-103.870457
	13155.00	89.69	269.43	5666.82	7499.77	-3610.18	-7487.72	1.43	1503522.31			

Comments	MD (ft)	Incl (°)	Azim True (°)	TVD (ft)	VSEC (ft)	NS (ft)	EW (ft)	DLS (°/100ft)	Northing (ftUS)	Easting (ftUS)	Latitude (°)	Longitude (°)
	15843.00	89.99	269.39	5714.95	10179.98	-3614.30	-10169.93	1.47	1503468.01	3449007.28	40.704156	-103.880470
	15932.00	90.25	269.78	5714.76	10268.98	-3614.94	-10258.93	0.53	1503465.71	3448918.31	40.704154	-103.880791
	16022.00	90.31	270.11	5714.32	10358.98	-3615.03	-10348.93	0.37	1503463.94	3448828.33	40.704154	-103.881115
	16112.00	89.77	269.31	5714.26	10448.98	-3615.48	-10438.92	1.07	1503461.80	3448738.36	40.704152	-103.881440
	16201.00	89.97	269.96	5714.46	10537.98	-3616.05	-10527.92	0.76	1503459.58	3448649.39	40.704151	-103.881761
	16291.00	90.98	270.46	5713.72	10627.97	-3615.72	-10617.92	1.25	1503458.22	3448559.41	40.704151	-103.882085
	16380.00	89.54	268.54	5713.31	10716.96	-3616.50	-10706.90	2.70	1503455.79	3448470.45	40.704149	-103.882406
	16470.00	89.91	270.12	5713.74	10806.95	-3617.55	-10796.89	1.80	1503453.05	3448380.50	40.704146	-103.882731
	16559.00	89.45	269.71	5714.24	10895.95	-3617.68	-10885.89	0.69	1503451.26	3448291.52	40.704146	-103.883052
	16649.00	89.83	270.42	5714.81	10985.95	-3617.58	-10975.89	0.89	1503449.68	3448201.53	40.704146	-103.883376
	16738.00	90.54	269.70	5714.52	11074.95	-3617.49	-11064.89	1.14	1503448.11	3448112.55	40.704146	-103.883697
	16828.00	89.41	269.53	5714.56	11164.94	-3618.09	-11154.88	1.27	1503445.83	3448022.58	40.704144	-103.884022
	16917.00	90.35	268.34	5714.74	11253.93	-3619.75	-11243.87	1.70	1503442.51	3447933.65	40.704140	-103.884343
	17007.00	91.14	269.88	5713.57	11343.91	-3621.14	-11333.84	1.92	1503439.43	3447843.71	40.704136	-103.884667
	17096.00	91.52	269.93	5711.51	11432.89	-3621.29	-11422.82	0.43	1503437.62	3447754.76	40.704135	-103.884988
	17186.00	91.48	270.09	5709.15	11522.86	-3621.28	-11512.79	0.18	1503435.96	3447664.80	40.704135	-103.885313
	17276.00	88.35	269.24	5709.29	11612.84	-3621.80	-11602.78	3.60	1503433.75	3447574.84	40.704134	-103.885637
	17365.00	89.40	269.19	5711.03	11701.82	-3623.02	-11691.75	1.18	1503430.87	3447485.91	40.704130	-103.885958
	17455.00	88.78	269.80	5712.46	11791.81	-3623.81	-11781.73	0.97	1503428.40	3447396.96	40.704128	-103.886283
	17544.00	89.84	269.32	5713.53	11880.80	-3624.50	-11870.72	1.31	1503426.05	3447307.00	40.704126	-103.886604
	17634.00	88.92	268.78	5714.51	11970.78	-3625.99	-11960.70	1.19	1503422.88	3447217.06	40.704122	-103.886928
	17723.00	88.82	269.48	5716.26	12059.76	-3627.34	-12049.68	0.79	1503419.87	3447128.13	40.704118	-103.887249
	17813.00	88.75	270.02	5718.17	12149.74	-3627.73	-12139.65	0.60	1503417.79	3447038.18	40.704117	-103.887574
	17902.00	89.59	269.94	5719.46	12238.73	-3627.76	-12228.64	0.95	1503416.10	3446949.20	40.704116	-103.887895
	17992.00	89.06	268.94	5720.52	12328.72	-3628.64	-12318.63	1.26	1503413.54	3446859.25	40.704114	-103.888219
	18082.00	89.52	269.74	5721.64	12418.71	-3629.68	-12408.62	1.03	1503410.82	3446769.30	40.704111	-103.888544
	18171.00	88.52	269.48	5723.16	12507.69	-3630.29	-12497.60	1.16	1503408.56	3446680.34	40.704109	-103.888865
	18261.00	88.58	269.29	5725.44	12597.66	-3631.25	-12587.57	0.22	1503405.91	3446590.41	40.704106	-103.889189
	18350.00	88.37	269.91	5727.80	12686.63	-3631.87	-12676.53	0.74	1503403.63	3446501.47	40.704104	-103.889510
	18440.00	89.39	270.51	5729.56	12776.61	-3631.54	-12766.51	1.31	1503402.28	3446411.50	40.704105	-103.889835
	18529.00	89.05	269.71	5730.78	12866.60	-3631.37	-12856.50	0.98	1503400.79	3446322.53	40.704106	-103.890156
	18619.00	88.52	270.56	5732.68	12956.57	-3631.16	-12946.48	1.11	1503399.32	3446232.56	40.704106	-103.890480
	18709.00	88.99	271.32	5734.64	13046.53	-3629.68	-13036.45	0.99	1503399.11	3446142.59	40.704110	-103.890805
	18798.00	89.50	270.33	5735.81	13134.51	-3628.40	-13124.43	1.25	1503398.73	3446053.60	40.704113	-103.891125
	18888.00	87.92	269.70	5737.84	13224.49	-3628.38	-13214.40	1.89	1503397.08	3445963.64	40.704113	-103.891450
	18977.00	88.22	269.71	5740.84	13313.43	-3628.84	-13303.35	0.34	1503394.96	3445874.72	40.704112	-103.891771
	19067.00	88.13	270.18	5743.70	13403.39	-3628.92	-13393.31	0.53	1503393.19	3445784.78	40.704111	-103.892095
	19156.00	88.59	270.62	5746.25	13493.35	-3628.30	-13482.27	0.72	1503392.15	3445695.82	40.704113	-103.892416
	19246.00	87.95	270.10	5748.97	13583.30	-3627.74	-13572.22	0.92	1503391.04	3445605.87	40.704114	-103.892740
	19335.00	88.25	269.69	5751.92	13671.25	-3627.90	-13661.17	0.57	1503389.21	3445516.94	40.704114	-103.893061
	19425.00	88.51	270.54	5754.46	13761.21	-3627.72	-13751.14	0.99	1503387.71	3445426.99	40.704114	-103.893386
	19515.00	88.55	270.62	5756.77	13851.18	-3626.81	-13841.10	0.10	1503386.94	3445337.03	40.704117	-103.893710
	19604.00	88.52	270.15	5759.05	13940.14	-3626.21	-13930.07	0.53	1503385.88	3445248.06	40.704118	-103.894031
	19693.00	87.59	270.17	5762.07	14029.09	-3625.96	-14019.02	1.05	1503384.47	3445159.13	40.704119	-103.894352
	19783.00	88.15	270.59	5765.41	14119.02	-3625.37	-14108.95	0.78	1503383.38	3445069.20	40.704120	-103.894676
	19872.00	87.98	270.72	5768.42	14207.96	-3624.35	-14197.90	0.24	1503382.74	3444980.25	40.704123	-103.894997
	19962.00	88.45	270.39	5771.22	14297.91	-3623.48	-14287.85	0.64	1503381.93	3444890.30	40.704125	-103.895322
	20051.00	89.26	272.74	5773.00	14386.85	-3621.05	-14376.79	2.79	1503382.70	3444801.33	40.704132	-103.895642
	20141.00	87.74	270.62	5775.35	14476.76	-3618.41	-14466.71	2.90	1503383.66	3444711.38	40.704139	-103.895967

Cross Setback Toe (1493' FSL, 300' FWL)	20202.01	88.25	270.45	5777.49	14537.73	-3617.84	-14527.68	0.89	1503383.09	3444650.41	40.704140	-103.896187
	20230.00	88.49	270.37	5778.28	14565.71	-3617.64	-14555.66	0.89	1503382.76	3444622.43	40.704141	-103.896287
Last SLB MWD Survey Projection to TD (1495' FSL, 198' FWL)	20272.00	88.25	270.88	5779.48	14607.69	-3617.18	-14597.64	1.34	1503382.44	3444580.45	40.704142	-103.896439
	20304.00	88.25	270.88	5780.45	14639.67	-3616.69	-14629.62	0.00	1503382.33	3444548.47	40.704143	-103.896554

Survey Type:		Def Survey										
Survey Error Model:		ISCWSA Rev 3 *** 3-D 95.000% Confidence 2.7955 sigma										
Survey Program:												
Description	Part	MD From (ft)	MD To (ft)	EOU Freq (ft)	Hole Size (in)	Casing Diameter (in)	Survey Tool Type	Borehole / Survey				
	1	0.000	6.000	1/98.425	13.500	9.625	A001Mb_MWD-Depth Only	Speed Goat Fed 3432-07H / Speed Goat Fed 3432-07H				
	1	6.000	21.000	Act Stns	13.500	9.625	A001Mb_MWD-Depth Only	Speed Goat Fed 3432-07H / Speed Goat Fed 3432-07H				
	1	21.000	1545.000	Act Stns	13.500	9.625	A001Mb_MWD	Speed Goat Fed 3432-07H / Speed Goat Fed 3432-07H				
	1	1545.000	20304.000	Act Stns	8.500	5.500	A010Mb_MWD+IFR1+SAG+MS	Speed Goat Fed 3432-07H / Speed Goat Fed 3432-07H / IFR1+MS+SAG 0' to 20304'				

...Speed Goat Fed 3432-07H/Speed Goat Fed 3432-07H IFR1+MS+SAG 0' to 20304' Definitive