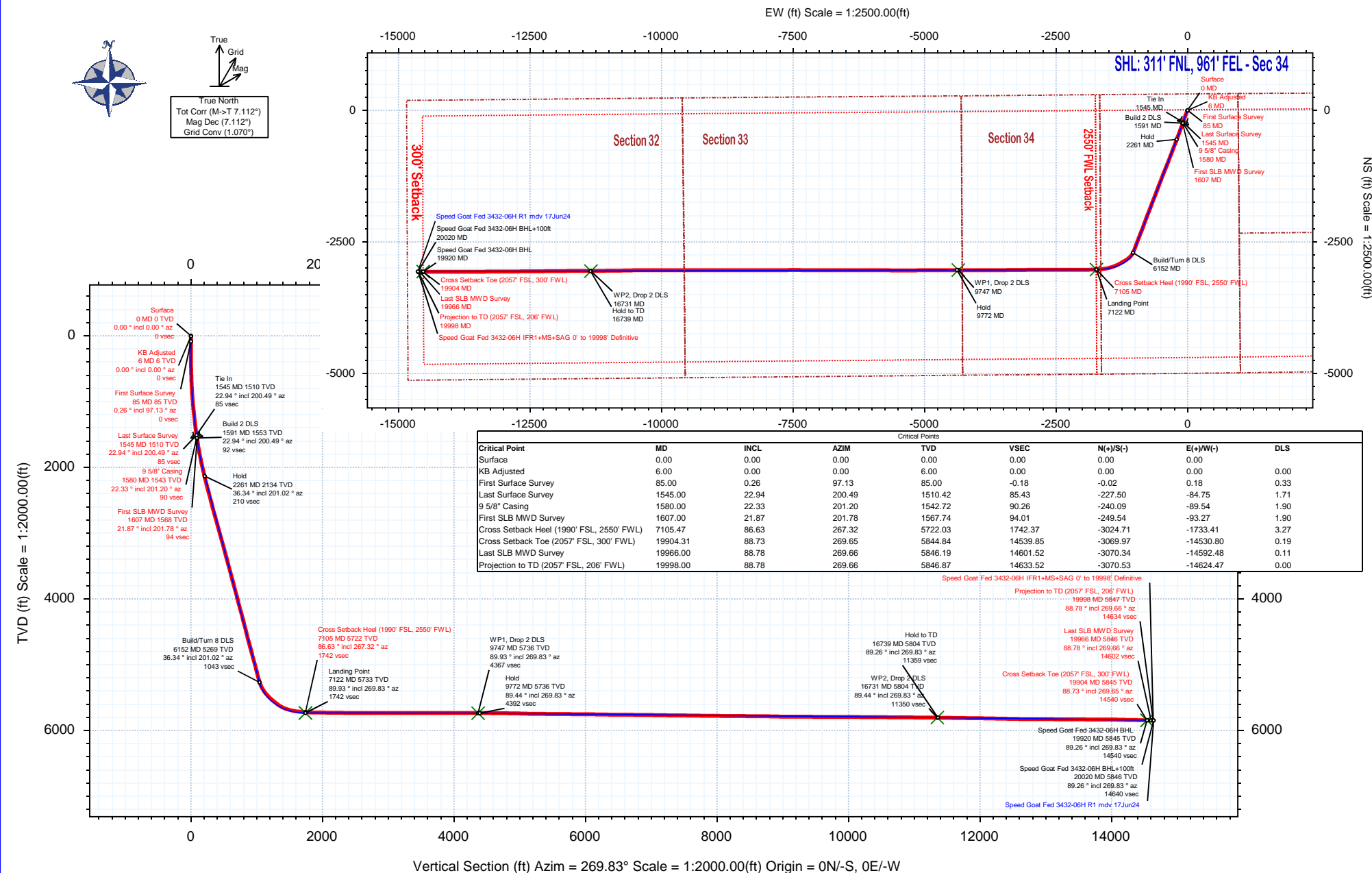


Borehole: Speed Goat Fed 3432-06H	Well: Speed Goat Fed 3432-06H	Field: CO, Weld County (NAD 83 NZ) - 2019	Structure: Verdad Resources 34-09N-58W (Speed Goat 3432-3435 Pad)
---	---	---	---

Gravity & Magnetic Parameters				Surface Location NAD83 Colorado State Plane, Northern Zone, US Feet				Miscellaneous			
Model: HDGM 2024	Dip: 66.847°	Date: 28-Jun-2024	Lat: N 40 42 50.85	Northing: 1507287.59ftUS	Grid Conv: 1.0701°	Slot: Speed Goat Fed 3432-06H	TVD Ref: RKB = 21ft(4743ft above Mean Sea Level)				
MagDec: 7.112°	FS: 51809.655nT	Gravity FS: 999.096mg (9.80665 Based)	Lon: W 103 50 37.65	Easting: 3459107.24ftUS	Scale Fact: 0.9999895	Plan: Speed Goat Fed 3432-06H IFR1+MS+SAG 0' to 19998' Definitive					





Speed Goat Fed 3432-06H IFR1+MS+SAG 0' to 1998' Definitive Survey

Geodetic Report

(Def Survey)



Report Date: July 12, 2024 - 09:03 AM
Client: Verdad Resources
Field: CO, Weld County (NAD 83 NZ) - 2019
Structure / Slot: Verdad Resources 34-09N-58W (Speed Goat 3432-3435 Pad) / Speed Goat Fed 3432-06H
Well: Speed Goat Fed 3432-06H
Borehole: Speed Goat Fed 3432-06H
UWI / API#: Unknown / 05-123-52503
Survey Name: Speed Goat Fed 3432-06H IFR1+MS+SAG 0' to 1998' Definitive
Survey Date: May 08, 2024
Tort / AHD / DDI / ERD Ratio: 240.760 ° / 16587.881 ft / 7.135 / 2.837
Coordinate Reference System: NAD83 Colorado State Plane, Northern Zone, US Feet
Location Lat / Long: N 40° 42' 50.8535", W 103° 50' 37.64757"
Location Grid N/E Y/X: N 1507287.590 ftUS, E 3459107.240 ftUS
CRS Grid Convergence Angle: 1.0701 °
Grid Scale Factor: 0.9999895
Version / Patch: 2.10.836.0

Survey / DLS Computation: Minimum Curvature / Lubinski
Vertical Section Azimuth: 269.830 ° (True North)
Vertical Section Origin: 0.000 ft, 0.000 ft
TVD Reference Datum: RKB = 21ft
TVD Reference Elevation: 4743.000 ft above Mean Sea Level
Seabed / Ground Elevation: 4722.000 ft above Mean Sea Level
Magnetic Declination: 7.112 °
Total Gravity Field Strength: 999.0960mgn (9.80665 Based)
Gravity Model: GARM
Total Magnetic Field Strength: 51809.655 nT
Magnetic Dip Angle: 66.847 °
Declination Date: June 28, 2024
Magnetic Declination Model: HDGM 2024
North Reference: True North
Grid Convergence Used: 0.0000 °
Total Corr Mag North→True North: 7.1123 °
Local Coord Referenced To: Well Head

Comments	MD (ft)	Incl (°)	Azim True (°)	TVD (ft)	VSEC (ft)	NS (ft)	EW (ft)	DLS (°/100ft)	Northing (ftUS)	Easting (ftUS)	Latitude (°)	Longitude (°)
Surface	0.00	0.00	0.00	0.00	0.00	0.00	0.00	N/A	1507287.59	3459107.24	40.714126	-103.843791
KB Adjusted	6.00	0.00	0.00	6.00	0.00	0.00	0.00	0.00	1507287.59	3459107.24	40.714126	-103.843791
First Surface Survey	85.00	0.26	97.13	85.00	-0.18	-0.02	0.18	0.33	1507287.57	3459107.42	40.714126	-103.843790
	176.00	0.31	35.96	176.00	-0.53	0.15	0.53	0.32	1507287.75	3459107.76	40.714126	-103.843789
	267.00	0.44	19.26	267.00	-0.79	0.68	0.79	0.19	1507288.29	3459108.01	40.714128	-103.843788
	358.00	0.70	238.46	357.99	-0.43	0.72	0.43	1.18	1507288.32	3459107.66	40.714128	-103.843789
	448.00	1.93	222.73	447.97	1.07	-0.68	-1.07	1.41	1507286.89	3459106.18	40.714124	-103.843795
	537.00	3.34	216.13	536.87	3.63	-3.88	-3.61	1.62	1507283.65	3459103.70	40.714115	-103.843804
	627.00	4.44	198.38	626.67	6.29	-9.30	-6.26	1.80	1507278.17	3459101.16	40.714100	-103.843814
	716.00	7.21	202.86	715.20	9.57	-17.72	-9.52	3.15	1507269.70	3459098.06	40.714077	-103.843825
	806.00	9.32	200.93	804.26	14.40	-29.73	-14.31	2.36	1507257.60	3459093.48	40.714044	-103.843843
	895.00	11.16	198.20	891.84	19.71	-44.64	-19.58	2.14	1507242.59	3459088.50	40.714003	-103.843862
	984.00	12.44	203.83	978.96	26.32	-61.60	-26.14	1.93	1507225.52	3459082.25	40.713957	-103.843885
	1074.00	13.40	203.13	1066.68	34.39	-80.05	-34.16	1.08	1507206.91	3459074.59	40.713906	-103.843914
	1163.00	16.00	201.11	1152.76	42.92	-100.99	-42.63	2.98	1507185.83	3459066.51	40.713849	-103.843945
	1253.00	18.15	199.35	1238.79	52.11	-125.79	-51.74	2.46	1507160.86	3459057.86	40.713781	-103.843978
	1342.00	21.49	196.45	1322.51	61.41	-154.51	-60.95	3.91	1507131.97	3459049.19	40.713702	-103.844011
	1431.00	22.02	197.59	1405.17	71.16	-186.05	-70.61	0.76	1507100.26	3459040.12	40.713615	-103.844046
	1521.00	22.98	199.44	1488.32	82.20	-218.70	-81.56	1.33	1507067.41	3459029.78	40.713526	-103.844085
Last Surface Survey	1545.00	22.94	200.49	1510.42	85.43	-227.50	-84.75	1.71	1507058.55	3459026.75	40.713502	-103.844097
9 5/8" Casing First SLB MWD Survey	1580.00	22.33	201.20	1542.72	90.26	-240.09	-89.54	1.90	1507045.88	3459022.20	40.713467	-103.844114
	1607.00	21.87	201.78	1567.74	94.01	-249.54	-93.27	1.90	1507036.35	3459018.65	40.713441	-103.844127
	1696.00	24.22	199.04	1649.63	106.21	-282.20	-105.37	2.90	1507003.48	3459007.16	40.713351	-103.844171
	1786.00	27.92	201.61	1730.46	120.11	-319.25	-119.16	4.30	1506966.17	3458994.06	40.713250	-103.844221
	1876.00	29.07	199.39	1809.56	135.25	-359.47	-134.18	1.74	1506925.68	3458979.80	40.713139	-103.844275
	1965.00	30.92	200.30	1886.64	150.48	-401.31	-149.29	2.14	1506883.57	3458965.47	40.713024	-103.844330
	2055.00	32.06	200.46	1963.38	166.99	-445.38	-165.67	1.27	1506839.20	3458949.92	40.712904	-103.844389
	2144.00	33.35	200.54	2038.27	183.96	-490.42	-182.51	1.45	1506793.85	3458933.93	40.712780	-103.844449
	2234.00	33.26	199.40	2113.49	200.98	-536.87	-199.39	0.70	1506747.10	3458917.92	40.712652	-103.844510
	2323.00	35.37	201.29	2187.00	218.58	-583.89	-216.85	2.66	1506699.76	3458901.34	40.712523	-103.844573
	2413.00	34.98	201.36	2260.56	237.58	-631.20	-235.70	0.44	1506651.12	3458883.39	40.712391	-103.844641
	2502.65	36.42	201.73	2333.36	256.93	-680.85	-254.92	1.62	1506602.11	3458865.09	40.712257	-103.844710
	2592.00	36.88	200.60	2405.05	276.34	-730.58	-274.17	0.91	1506552.02	3458846.77	40.712121	-103.844780
	2681.00	36.58	200.27	2476.38	295.07	-780.46	-292.75	0.40	1506501.81	3458829.12	40.711984	-103.844847
	2771.00	36.54	200.71	2548.67	313.98	-830.68	-311.52	0.29	1506451.25	3458811.29	40.711846	-103.844915
	2861.00	36.81	200.82	2620.85	333.19	-880.94	-330.58	0.31	1506400.64	3458793.18	40.711708	-103.844983
	2950.00	37.22	200.45	2691.92	352.22	-931.08	-349.46	0.52	1506350.15	3458775.24	40.711570	-103.845052
	3040.00	36.03	201.65	2764.15	371.64	-981.19	-368.73	1.54	1506299.70	3458756.90	40.711433	-103.845121
	3129.00	36.33	202.52	2835.99	391.54	-1029.87	-388.49	0.67	1506250.65	3458738.06	40.711299	-103.845192
	3219.00	36.41	202.35	2908.46	412.06	-1079.20	-408.86	0.14	1506200.95	3458718.61	40.711164	-103.845266
	3308.00	36.66	201.84	2979.97	432.13	-1128.30	-428.79	0.44	1506151.50	3458699.61	40.711029	-103.845338
	3398.00	36.79	201.36	3052.10	452.09	-1178.33	-448.60	0.35	1506101.10	3458680.73	40.710892	-103.845409
	3488.00	36.95	201.63	3124.10	472.03	-1228.58	-468.38	0.25	1506050.49	3458661.89	40.710754	-103.845480
	3577.00	37.20	201.91	3195.11	492.07	-1278.41	-488.28	0.34	1506000.30	3458642.92	40.710617	-103.845552
	3667.00	36.50	199.70	3267.13	511.40	-1328.85	-507.46	1.67	1505949.51	3458624.69	40.710479	-103.845621
	3756.00	37.05	202.49	3338.43	530.73	-1378.55	-526.64	1.98	1505899.46	3458606.44	40.710342	-103.845691
	3846.00	36.72	200.61	3410.41	550.72	-1428.78	-546.48	1.31	1505848.87	3458587.54	40.710204	-103.845762
	3936.00	36.50	200.77	3482.66	569.83	-1479.00	-565.45	0.27	1505798.31	3458569.52	40.710066	-103.845831
	4025.00	36.80	201.07	3554.06	588.95	-1528.62	-584.42	0.39	1505748.34	3458551.48	40.709930	-103.845899
	4115.00	36.52	200.11	3626.26	608.00	-1578.92	-603.31	0.71	1505697.70	3458533.53	40.709792	-103.845967
	4204.00	35.96	201.73	3698.04	626.92	-1628.06	-622.10	1.25	1505648.21	3458515.67	40.709657	-103.846035
	4294.00	36.41	201.94	3770.68	646.83	-1677.39	-641.86	0.52	1505598.53	3458496.83	40.709522	-103.846106
	4383.00	36.63	200.58	3842.21	666.18	-1726.74	-661.06	0.94	1505548.82	3458478.55	40.709386	-103.846175
	4473.00	36.14	201.38	3914.66	685.44	-1776.59	-680.17	0.76	1505498.63	3458460.37	40.709250	-103.846244
	4561.00	36.15	200.63	3985.73	704.19	-1825.05	-698.78	0.50	1505449.83	3458442.68	40.709117	-103.846311
	4651.00	36.49	200.63	4058.24	723.12	-1874.94	-717.56	0.38	1505399.60	3458424.83	40.708980	-103.846379
	4740.00	36.21	201.40	4129.92	742.18	-1924.18	-736.48	0.60	1505350.02	3458406.84	40.708845	-103.846447
	4830.00	36.93	201.57	4202.21	761.97	-1974.08	-756.12	0.81	1505299.76	3458388.13	40.708708	-103.846518
	4919.00	36.25	200.68	4273.67	781.24	-2023.56	-775.24	0.97	1505249.93	3458369.94	40.708572	-103.846587
	5008.00	36.59	200.83	4345.28	800.11	-2072.97	-793.96	0.39	1505200.18	3458352.14	40.708436	-103.846655
	5098.00	36.38	200.41	4417.64	819.11	-2123.06	-812.81	0.36	1505149.75	3458334.23	40.708299	-103.846723
	5187.00	35.73	199.97	4489.60	837.33	-2172.22	-830.89	0.79	1505100.26	3458317.07	40.708164	-103.846791
	5277.00	35.36	199.76	4562.83	855.26	-2221.43	-848.67	0.43	1505050.73	3458300.22	40.708029	-103.846852
	5367.00	36.71	200.93	4635.60	873.82	-2271.06	-867.08	1.68	1505000.76	3458282.73	40.707892	-103.846918
	5456.00	36.92	202.46	4706.86	893.68	-2320.61	-886.80	1.06	1504950.85	3458265.95	40.707756	-103.846990
	5546.00	36.42	200.96	4779.05	913.71	-2370.54	-906.68	1.14	1504900.56	3458245.00	40.707619	-103.847061
	5635.00	36.71	201.09	4850.53	932.88	-2420.03	-925.71	0.34	1504850.72	3458226.90	40.707484	-103.847130
	5725.00	36.60	201.19	4922.73	952.41	-2470.15	-945.08	0.14	1504800.26	3458208.46	40.707346	-103.847200
	5814.00	36.69	201.18	4994.14	971.75	-2519.68	-964.28	0.10	1504750.38	3458190.20	40.707210	-103.847269
	5904.00	36.42	200.43	5066.44	990.94	-2569.78	-983.32	0.58	1504699.92	3458172.10	40.707073	-103.847338
	5994.00	35.33	200.93	5139.36	1009.71	-2619.13	-1001.94	1.25	1504650.24	3458154.40	40.706937	-103.847405
	6083.00	35.77	202.16	5211.77	1028.86	-2667.25	-1020.95	0.94	1504601.77	3458136.30	40.706805	-103.847473
	6173.00	38.01	205.84									

Comments	MD (ft)	Incl (°)	Azim True (°)	TVD (ft)	VSEC (ft)	NS (ft)	EW (ft)	DLS (°/100ft)	Northing (ftUS)	Easting (ftUS)	Latitude (°)	Longitude (°)
	6441.00	48.94	238.24	5481.26	1176.96	-2842.99	-1168.53	8.63	1504223.31	3457992.02	40.706323	-103.848006
	6531.00	53.49	239.05	5537.62	1236.97	-2879.47	-1228.43	5.10	1504385.71	3457932.81	40.706222	-103.848222
	6621.00	55.69	241.41	5589.77	1300.75	-2921.87	-1292.10	3.25	1504348.14	3457869.83	40.706123	-103.848451
	6710.00	62.04	245.93	5635.78	1369.11	-2949.54	-1360.36	8.35	1504313.20	3457802.22	40.706030	-103.848698
	6800.00	71.33	252.28	5671.39	1446.33	-2978.81	-1437.50	12.28	1504282.49	3457725.64	40.705950	-103.848976
	6889.00	77.94	258.45	5694.99	1529.36	-3000.40	-1520.46	9.99	1504259.35	3457643.10	40.705890	-103.849275
	6979.00	82.40	263.06	5710.35	1616.88	-3014.62	-1607.94	7.07	1504243.51	3457555.90	40.705851	-103.849590
	7068.00	85.75	266.47	5719.54	1705.04	-3022.68	-1696.07	5.36	1504233.80	3457467.93	40.705829	-103.849908
Cross Setback												
Heel (1990'	7105.47	86.63	267.32	5722.03	1742.37	-3024.71	-1733.41	3.27	1504231.07	3457430.65	40.705824	-103.850043
FSL 2550'												
FWL)												
	7158.00	87.87	268.51	5724.55	1794.81	-3026.62	-1785.84	3.27	1504228.19	3457378.26	40.705818	-103.850232
	7248.00	89.33	268.91	5726.75	1884.76	-3028.64	-1875.79	1.68	1504224.48	3457288.37	40.705813	-103.850556
	7337.00	89.36	269.17	5727.77	1973.75	-3030.13	-1964.77	0.29	1504221.33	3457199.43	40.705809	-103.850877
	7427.00	89.18	270.03	5728.91	2063.74	-3030.76	-2054.76	0.98	1504219.02	3457109.47	40.705807	-103.851202
	7516.00	89.26	269.21	5730.13	2152.73	-3031.35	-2143.75	0.93	1504216.77	3457020.51	40.705805	-103.851523
	7606.00	89.51	270.66	5731.09	2242.72	-3031.45	-2233.74	1.63	1504214.99	3456930.53	40.705805	-103.851848
	7696.00	88.98	269.87	5732.28	2332.71	-3031.04	-2323.73	1.06	1504213.72	3456840.55	40.705806	-103.852172
	7785.00	89.08	270.23	5733.78	2421.70	-3030.96	-2412.72	0.42	1504212.14	3456751.58	40.705806	-103.852493
	7875.00	90.42	269.51	5734.18	2511.69	-3031.16	-2502.71	1.69	1504210.25	3456661.61	40.705806	-103.852818
	7964.00	90.23	269.77	5733.67	2600.69	-3031.72	-2591.71	0.36	1504208.03	3456572.64	40.705804	-103.853139
	8054.00	90.13	269.92	5733.39	2690.69	-3031.97	-2681.71	0.20	1504206.11	3456482.66	40.705804	-103.853463
	8143.00	90.15	269.99	5733.17	2779.69	-3032.04	-2770.71	0.08	1504204.38	3456393.68	40.705803	-103.853784
	8233.00	90.29	270.27	5732.83	2869.69	-3031.83	-2860.71	0.35	1504202.90	3456303.69	40.705804	-103.854109
	8323.00	90.21	269.79	5732.43	2959.69	-3031.78	-2950.71	0.54	1504201.26	3456213.71	40.705804	-103.854433
	8412.00	89.80	269.52	5732.43	3048.69	-3032.32	-3039.70	0.55	1504199.07	3456124.74	40.705802	-103.854754
	8501.00	90.05	269.34	5732.54	3137.69	-3033.21	-3128.70	0.35	1504196.52	3456035.77	40.705800	-103.855075
	8591.00	90.25	269.10	5732.31	3227.68	-3034.43	-3218.69	0.35	1504193.61	3455945.82	40.705797	-103.855400
	8680.00	89.92	269.91	5732.18	3316.68	-3035.20	-3307.69	0.98	1504191.18	3455856.86	40.705795	-103.855721
	8770.00	89.53	269.20	5732.61	3406.67	-3035.90	-3397.68	0.90	1504188.80	3455766.89	40.705793	-103.856046
	8859.00	90.75	269.42	5732.39	3496.67	-3036.97	-3486.67	1.39	1504186.07	3455677.94	40.705790	-103.856367
	8948.00	88.65	269.23	5732.86	3586.66	-3038.02	-3575.66	2.37	1504183.36	3455588.99	40.705787	-103.856688
	9038.00	90.23	269.43	5733.74	3674.65	-3039.07	-3664.65	1.77	1504180.63	3455499.04	40.705784	-103.857012
	9128.00	90.16	270.59	5733.43	3764.65	-3039.06	-3753.65	1.29	1504178.96	3455409.05	40.705784	-103.857337
	9217.00	90.13	270.76	5733.20	3853.64	-3038.01	-3844.64	0.19	1504178.35	3455320.06	40.705787	-103.857658
	9306.00	89.28	269.40	5733.66	3942.63	-3037.88	-3933.63	1.80	1504176.81	3455231.03	40.705787	-103.857979
	9396.00	90.18	270.07	5734.09	4032.63	-3038.30	-4023.63	1.25	1504174.71	3455141.10	40.705786	-103.858303
	9485.00	90.04	268.98	5733.92	4121.63	-3039.04	-4112.63	1.23	1504172.31	3455052.14	40.705784	-103.858624
	9575.00	90.61	270.67	5733.40	4211.62	-3039.31	-4202.62	1.98	1504170.36	3454962.17	40.705783	-103.858949
	9664.00	90.04	270.43	5732.90	4300.61	-3038.46	-4291.62	0.69	1504169.55	3454873.19	40.705785	-103.859270
	9754.00	89.15	270.12	5733.54	4390.61	-3038.03	-4381.61	1.05	1504168.30	3454783.19	40.705786	-103.859594
	9844.00	89.48	270.10	5734.61	4480.60	-3037.85	-4471.60	0.37	1504166.79	3454693.21	40.705787	-103.859919
	9933.00	89.44	269.95	5735.45	4569.59	-3037.81	-4560.60	0.17	1504165.17	3454604.23	40.705787	-103.860240
	10022.00	89.12	270.38	5736.57	4658.58	-3037.56	-4649.59	0.60	1504163.76	3454515.25	40.705787	-103.860561
	10112.00	89.66	269.97	5737.53	4748.58	-3037.28	-4739.59	0.75	1504162.36	3454425.26	40.705788	-103.860886
	10202.00	88.93	269.73	5738.63	4838.57	-3037.52	-4829.58	0.85	1504160.44	3454335.29	40.705787	-103.861210
	10291.00	88.86	269.45	5740.35	4927.55	-3038.16	-4918.56	0.32	1504158.14	3454246.34	40.705786	-103.861531
	10381.00	88.27	269.62	5742.60	5017.52	-3038.89	-5008.53	0.68	1504155.73	3454156.40	40.705784	-103.861856
	10470.00	89.06	268.97	5744.68	5106.49	-3039.98	-5097.53	1.15	1504152.98	3454067.47	40.705781	-103.862176
	10560.00	88.87	269.93	5746.30	5196.48	-3040.84	-5187.48	1.09	1504150.43	3453977.52	40.705778	-103.862501
	10649.00	89.65	269.43	5747.45	5285.47	-3041.34	-5276.47	1.04	1504148.27	3453888.56	40.705777	-103.862822
	10739.00	89.20	270.29	5748.36	5375.46	-3041.56	-5366.46	1.08	1504146.37	3453798.59	40.705776	-103.863146
	10828.00	89.25	269.85	5749.56	5464.45	-3041.45	-5455.45	0.50	1504144.82	3453709.61	40.705776	-103.863467
	10917.00	89.78	270.12	5750.31	5553.45	-3041.48	-5544.45	0.67	1504143.13	3453620.63	40.705776	-103.863788
	11007.00	89.59	270.57	5750.81	5643.44	-3040.93	-5633.44	0.54	1504142.00	3453530.64	40.705778	-103.864113
	11096.00	89.49	270.26	5751.52	5732.44	-3040.29	-5723.44	0.37	1504140.98	3453441.65	40.705779	-103.864434
	11186.00	89.85	269.78	5752.04	5822.43	-3040.26	-5813.44	0.67	1504139.33	3453351.67	40.705779	-103.864759
	11275.00	89.68	270.22	5752.41	5911.43	-3040.26	-5902.44	0.53	1504137.67	3453262.69	40.705779	-103.865080
	11365.00	89.31	269.76	5753.20	6001.43	-3040.27	-5992.43	0.66	1504135.97	3453172.71	40.705779	-103.865404
	11454.00	89.41	270.69	5754.19	6090.42	-3039.92	-6081.43	1.05	1504134.66	3453083.72	40.705780	-103.865725
	11544.00	88.70	269.54	5755.68	6180.40	-3039.74	-6171.41	1.50	1504133.16	3452993.75	40.705781	-103.866050
	11633.00	88.92	270.13	5757.53	6269.38	-3040.00	-6260.39	0.71	1504131.24	3452904.79	40.705780	-103.866371
	11723.00	89.78	269.43	5758.55	6359.38	-3040.34	-6350.38	1.23	1504129.21	3452814.82	40.705779	-103.866695
	11812.00	89.14	270.31	5759.39	6448.37	-3040.55	-6439.38	1.22	1504127.35	3452725.85	40.705778	-103.867016
	11902.00	89.73	270.01	5760.27	6538.36	-3040.30	-6529.37	0.74	1504125.92	3452635.87	40.705779	-103.867341
	11991.00	89.49	270.21	5760.88	6627.36	-3040.12	-6618.37	0.35	1504124.43	3452546.88	40.705779	-103.867662
	12081.00	89.42	270.00	5761.74	6717.36	-3039.96	-6708.37	0.25	1504122.91	3452456.90	40.705780	-103.867986
	12170.00	89.47	270.12	5762.60	6806.35	-3039.87	-6797.36	0.15	1504121.34	3452367.92	40.705780	-103.868307
	12260.00	89.35	270.43	5763.52	6896.34	-3039.43	-6887.36	0.37	1504120.10	3452277.94	40.705781	-103.868632
	12350.00	89.18	270.64	5764.68	6986.33	-3038.59	-6977.34	0.30	1504119.25	3452187.95	40.705783	-103.868957
	12439.00	89.24	269.91	5765.91	7075.32	-3038.17	-7066.33	0.82	1504118.02	3452098.97	40.705784	-103.869278
	12529.00	88.97	270.22	5767.31	7165.31	-3038.07	-7156.32	0.46	1504116.44	3452008.99	40.705784	-103.869602
	12618.00	89.18	270.55	5768.75	7254.29	-3037.47	-7245.31	0.44	1504115.38	3451920.01	40.705786	-103.869923
	12707.00	89.56	270.47	5769.73	7343.28	-3036.67	-7334.30	0.44	1504114.51	3451831.02	40.705788	-103.870244
	12797.00	89.64	270.28	5770.36	7432.27	-3036.09	-7424.30	0.23	1504113.42	3451741.03	40.705790	-103.870569
	12887.00	88.54	269.83	5771.79	7523.26	-3036.00	-7514.28	1.32	1504111.82	3451651.06	40.705790	-103.870893
	12976.00	89.50	269.33	5773.31	7612.24	-3036.65	-7603.27	1.22	1504109.51	3451562.11	40.705788	-103.871214
	13066.00	89.11	270.15	5774.40	7702.24	-3037.06	-7693.26	1.01	1504107			

Comments	MD (ft)	Incl (°)	Azim True (°)	TVD (ft)	VSEC (ft)	NS (ft)	EW (ft)	DLS (°/100ft)	Northing (ftUS)	Easting (ftUS)	Latitude (°)	Longitude (°)
	15879.00	89.21	269.04	5797.65	10515.01	-3040.01	-10506.04	0.73	1504051.94	3448659.94	40.705776	-103.881684
	15968.00	89.63	268.84	5798.55	10604.00	-3041.66	-10595.02	0.52	1504048.63	3448571.01	40.705771	-103.882005
	16058.00	89.33	268.94	5799.36	10693.98	-3043.40	-10685.00	0.35	1504045.20	3448481.08	40.705766	-103.882329
	16148.00	89.58	269.12	5800.22	10783.97	-3044.93	-10774.98	0.34	1504042.00	3448391.14	40.705762	-103.882654
	16237.00	89.66	269.29	5800.81	10872.96	-3046.16	-10863.97	0.21	1504039.10	3448302.19	40.705758	-103.882975
	16327.00	89.12	269.11	5801.77	10962.95	-3047.42	-10953.96	0.63	1504036.17	3448212.25	40.705755	-103.883299
	16417.00	89.38	269.20	5802.95	11052.94	-3048.74	-11043.94	0.31	1504033.16	3448122.30	40.705751	-103.883624
	16506.00	89.44	269.12	5803.86	11141.92	-3050.05	-11132.92	0.11	1504030.19	3448033.36	40.705747	-103.883945
	16596.00	89.61	269.35	5804.61	11231.92	-3051.25	-11222.91	0.32	1504027.31	3447943.41	40.705744	-103.884269
	16685.00	89.65	270.00	5805.18	11320.91	-3051.76	-11311.91	0.73	1504025.14	3447854.44	40.705743	-103.884590
	16775.00	88.70	269.56	5806.48	11410.90	-3052.10	-11401.90	1.16	1504023.12	3447764.47	40.705741	-103.884915
	16864.00	89.34	270.03	5808.00	11499.89	-3052.42	-11490.88	0.89	1504021.14	3447675.51	40.705740	-103.885236
	16954.00	89.50	269.93	5808.91	11589.88	-3052.45	-11580.88	0.21	1504019.43	3447585.53	40.705740	-103.885560
	17043.00	89.36	270.08	5809.80	11678.88	-3052.44	-11669.87	0.23	1504017.77	3447496.55	40.705740	-103.885881
	17132.00	88.65	269.45	5811.34	11767.87	-3052.81	-11758.86	1.07	1504015.74	3447407.59	40.705739	-103.886202
	17222.00	89.93	269.32	5812.46	11857.85	-3053.77	-11848.85	1.43	1504013.10	3447317.64	40.705736	-103.886527
	17312.00	89.07	269.36	5813.24	11947.85	-3054.81	-11938.83	0.96	1504010.38	3447227.69	40.705733	-103.886851
	17401.00	88.58	269.69	5815.07	12036.83	-3055.55	-12027.81	0.66	1504007.98	3447138.74	40.705731	-103.887172
	17491.00	89.18	269.58	5816.83	12126.81	-3056.12	-12117.79	0.68	1504005.73	3447048.79	40.705729	-103.887497
	17581.00	88.94	269.13	5818.30	12216.79	-3057.13	-12207.78	0.57	1504003.03	3446958.84	40.705727	-103.887821
	17670.00	89.28	269.60	5819.69	12305.78	-3058.12	-12296.76	0.65	1504000.39	3446868.89	40.705724	-103.888142
	17760.00	88.47	269.61	5821.45	12395.76	-3058.74	-12386.74	0.90	1503998.09	3446779.94	40.705722	-103.888467
	17849.00	88.89	269.40	5823.50	12484.73	-3059.51	-12475.71	0.53	1503995.66	3446691.00	40.705720	-103.888788
	17939.00	89.21	269.66	5825.00	12574.72	-3060.25	-12565.70	0.46	1503993.24	3446601.05	40.705718	-103.889112
	18028.00	88.95	269.24	5826.43	12663.71	-3061.10	-12654.68	0.55	1503990.72	3446512.09	40.705715	-103.889433
	18118.00	90.43	269.92	5826.91	12753.70	-3061.76	-12744.67	1.81	1503988.38	3446422.13	40.705713	-103.889758
	18207.00	89.12	269.16	5827.26	12842.70	-3062.48	-12833.67	1.70	1503986.00	3446333.17	40.705711	-103.890079
	18297.00	90.37	270.42	5827.66	12932.69	-3062.81	-12923.66	1.97	1503983.99	3446243.19	40.705710	-103.890403
	18387.00	89.68	269.82	5827.62	13022.69	-3062.62	-13013.66	1.02	1503982.50	3446153.21	40.705710	-103.890728
	18476.00	89.27	269.71	5828.44	13111.69	-3062.98	-13102.66	0.48	1503980.48	3446064.24	40.705709	-103.891049
	18566.00	89.63	269.48	5829.30	13201.68	-3063.62	-13192.65	0.47	1503978.16	3445974.27	40.705707	-103.891374
	18655.00	89.69	269.18	5829.83	13290.68	-3064.66	-13281.64	0.34	1503975.46	3445885.32	40.705704	-103.891695
	18745.00	89.66	269.24	5830.34	13380.67	-3065.90	-13371.63	0.07	1503972.53	3445795.37	40.705701	-103.892019
	18834.00	89.43	269.42	5831.05	13469.66	-3066.94	-13460.62	0.33	1503969.83	3445706.41	40.705698	-103.892340
	18924.00	89.78	269.85	5831.67	13559.66	-3067.51	-13550.62	0.62	1503967.58	3445616.44	40.705696	-103.892665
	19014.00	89.52	269.48	5832.22	13649.66	-3068.04	-13640.61	0.50	1503965.37	3445526.47	40.705695	-103.892989
	19103.00	89.61	269.58	5832.89	13738.65	-3068.77	-13729.61	0.15	1503962.98	3445437.51	40.705692	-103.893310
	19193.00	89.77	269.98	5833.38	13828.65	-3069.12	-13819.61	0.48	1503960.95	3445347.53	40.705691	-103.893635
	19282.00	89.82	270.20	5833.70	13917.65	-3068.98	-13908.61	0.25	1503959.43	3445258.55	40.705692	-103.893956
	19372.00	89.48	269.89	5834.25	14007.65	-3068.91	-13998.60	0.51	1503957.82	3445168.57	40.705692	-103.894280
	19461.00	88.75	269.79	5835.62	14096.64	-3069.15	-14087.59	0.83	1503955.91	3445079.60	40.705691	-103.894601
	19551.00	88.65	270.16	5837.67	14186.61	-3069.19	-14177.57	0.43	1503954.19	3444989.64	40.705691	-103.894926
	19640.00	88.76	270.09	5839.68	14275.59	-3069.00	-14266.55	0.15	1503952.72	3444900.68	40.705691	-103.895247
	19730.00	89.02	269.76	5841.42	14365.57	-3069.12	-14356.53	0.47	1503950.92	3444810.71	40.705691	-103.895571
	19820.00	88.87	269.73	5843.08	14455.56	-3069.52	-14446.51	0.17	1503948.84	3444720.75	40.705689	-103.895896

Cross Setback Toe (2057' FSL, 300' FWL)	19904.31	88.73	269.65	5844.84	14539.85	-3069.97	-14530.80	0.19	1503946.82	3444636.49	40.705688	-103.896200
	19909.00	88.72	269.65	5844.95	14544.54	-3070.00	-14535.49	0.19	1503946.70	3444631.80	40.705688	-103.896217
Last SLB MWD Survey	19966.00	88.78	269.66	5846.19	14601.52	-3070.34	-14592.48	0.11	1503945.29	3444574.83	40.705687	-103.896422
Projection to TD (2057' FSL, 206' FWL)	19998.00	88.78	269.66	5846.87	14633.52	-3070.53	-14624.47	0.00	1503944.51	3444542.85	40.705686	-103.896538

Survey Type: Def Survey

Survey Error Model: ISCWSA Rev 3 *** 3-D 95.000% Confidence 2.7955 sigma
Survey Program:

Description	Part	MD From (ft)	MD To (ft)	EOU Freq (ft)	Hole Size (in)	Casing Diameter (in)	Survey Tool Type	Borehole / Survey
	1	0.000	6.000	1/98.425	13.500	9.625	A001Mb_MWD-Depth Only	Speed Goat Fed 3432-06H / Speed Goat Fed 3432-06H
	1	6.000	21.000	Act Stns	13.500	9.625	A001Mb_MWD-Depth Only	Speed Goat Fed 3432-06H / Speed Goat Fed 3432-06H
	1	21.000	1545.000	Act Stns	13.500	9.625	A001Mb_MWD	Speed Goat Fed 3432-06H / Speed Goat Fed 3432-06H
	1	1545.000	19998.000	Act Stns	8.500	5.500	A010Mb_MWD+IFR1+SAG+MS	Speed Goat Fed 3432-06H / Speed Goat Fed 3432-06H / IFR1+MS+SAG 0' to 19998'

...Speed Goat Fed 3432-06H/Speed Goat Fed 3432-06H IFR1+MS+SAG 0' to 19998' Definitive