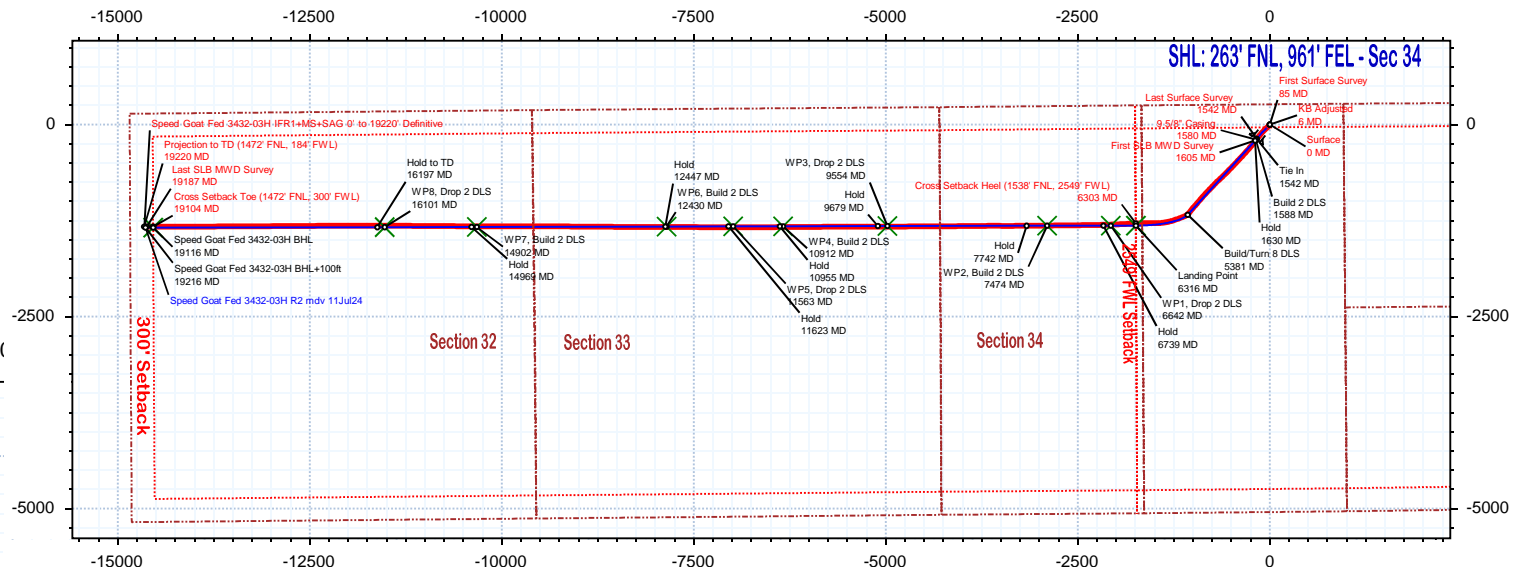
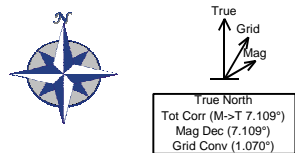


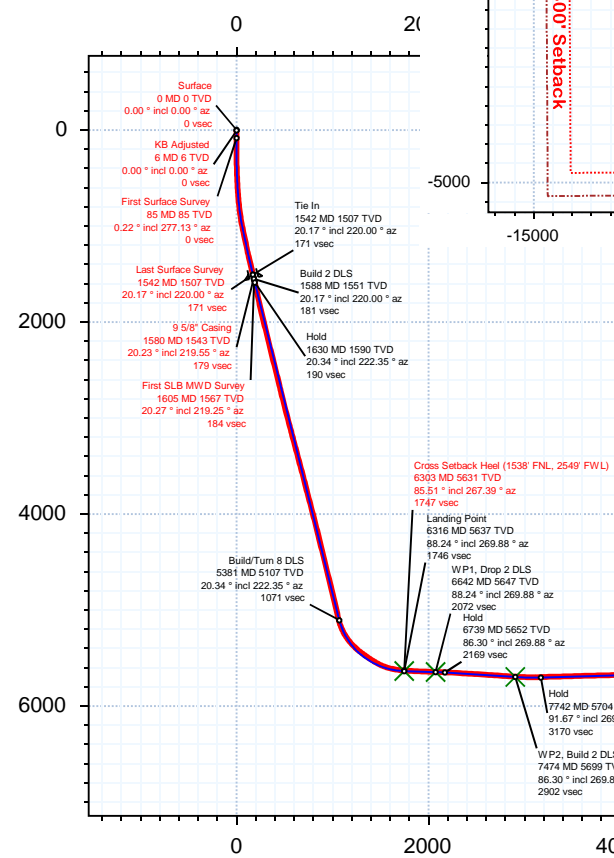
<b>Borehole:</b> Speed Goat Fed 3432-03H	<b>Well:</b> Speed Goat Fed 3432-03H	<b>Field:</b> CO, Weld County (NAD 83 NZ) - 2019	<b>Structure:</b> Verdad Resources 34-09N-58W (Speed Goat 3432-3435 Pad)
---	---	---	---

<b>Gravity &amp; Magnetic Parameters</b>		<b>Surface Location</b> NAD83 Colorado State Plane, Northern Zone, US Feet			<b>Miscellaneous</b>	
Model: HDGM 2024	Dip: 66.845°	Date: 13-Jul-2024	Lat: N 40 42 51.33	Northing: 1507335.67ftUS	Grid Conv: 1.0701°	Slot: Speed Goat Fed 3432-03H
MagDec: 7.109°	FS: 51804.195nT	Gravity FS: 999.096mg (9.80665 Based)	Lon: W 103 50 37.65	Easting: 3459106.06ftUS	Scale Fact: 0.99998952	Plan: Speed Goat Fed 3432-03H IFR1+MS+SAG 0' to 19220' Definitive
			TVD Ref: RKB = 21ft(4743ft above Mean Sea Level)			

EW (ft) Scale = 1:2500.00(ft)



TVD (ft) Scale = 1:2000.00(ft)



Critical Point	MD	INCL	AZIM	TVD	VSEC	N(+)/S(-)	E(+)/W(-)	DLS
Surface	0.00	0.00	0.00	0.00	0.00	0.00	0.00	
KB Adjusted	6.00	0.00	0.00	6.00	0.00	0.00	0.00	0.00
First Surface Survey	85.00	0.22	277.13	85.00	0.15	0.02	-0.15	0.28
Last Surface Survey	1542.00	20.17	220.00	1507.45	170.57	-187.37	-170.18	2.31
9 5/8" Casing	1580.00	20.23	219.55	1543.11	178.98	-197.45	-178.57	0.44
First SLB MWD Survey	1605.00	20.27	219.25	1566.56	184.49	-204.14	-184.06	0.44
Cross Setback Heel (1538' FNL, 2549' FWL)	6303.21	85.51	267.39	5630.87	1746.62	-1288.94	-1743.92	2.84
Cross Setback Toe (1472' FNL, 300' FWL)	19103.60	88.58	269.64	5787.49	14542.05	-1329.34	-14539.30	0.12
Last SLB MWD Survey	19187.00	88.55	269.68	5789.59	14625.43	-1329.90	-14622.67	0.31
Projection to TD (1472' FNL, 184' FWL)	19220.00	88.55	269.68	5790.43	14658.42	-1330.08	-14655.66	0.00

Vertical Section (ft) Azim = 269.88° Scale = 1:2000.00(ft) Origin = 0N/-S, 0E/-W



# Speed Goat Fed 3432-03H IFR1+MS+SAG 0' to 19220' Definitive Survey

## Geodetic Report

(Def Survey)



**Report Date:** July 26, 2024 - 07:59 AM  
**Client:** Verdad Resources  
**Field:** CO, Weld County (NAD 83 NZ) - 2019  
**Structure / Slot:** Verdad Resources 34-09N-58W (Speed Goat 3432-3435 Pad) / Speed Goat Fed 3432-03H  
**Well:** Speed Goat Fed 3432-03H  
**Borehole:** Speed Goat Fed 3432-03H  
**UWI / API#:** Unknown / 05-123-52495  
**Survey Name:** Speed Goat Fed 3432-03H IFR1+MS+SAG 0' to 19220' Definitive  
**Survey Date:** May 08, 2024  
**Tort / AHD / DDI / ERD Ratio:** 208.965 ° / 15194.394 ft / 7.023 / 2.624  
**Coordinate Reference System:** NAD83 Colorado State Plane, Northern Zone, US Feet  
**Location Lat / Long:** N 40° 42' 51.32877", W 103° 50' 37.65123"  
**Location Grid N/E Y/X:** N 1507335.670 ftUS, E 3459106.060 ftUS  
**CRS Grid Convergence Angle:** 1.0701 °  
**Grid Scale Factor:** 0.99998952  
**Version / Patch:** 2.10.836.0

**Survey / DLS Computation:** Minimum Curvature / Lubinski  
**Vertical Section Azimuth:** 269.880 ° (True North)  
**Vertical Section Origin:** 0.000 ft, 0.000 ft  
**TVD Reference Datum:** RKB = 21ft  
**TVD Reference Elevation:** 4743.000 ft above Mean Sea Level  
**Seabed / Ground Elevation:** 4722.000 ft above Mean Sea Level  
**Magnetic Declination:** 7.109 °  
**Total Gravity Field Strength:** 999.0960mgn (9.80665 Based)  
**Gravity Model:** GARM  
**Total Magnetic Field Strength:** 51804.195 nT  
**Magnetic Dip Angle:** 66.845 °  
**Declination Date:** July 13, 2024  
**Magnetic Declination Model:** HDGM 2024  
**North Reference:** True North  
**Grid Convergence Used:** 0.0000 °  
**Total Corr Mag North->True North:** 7.1088 °  
**Local Coord Referenced To:** Well Head

Comments	MD (ft)	Incl (°)	Azim True (°)	TVD (ft)	VSEC (ft)	NS (ft)	EW (ft)	DLS (°/100ft)	Northing (ftUS)	Easting (ftUS)	Latitude (°)	Longitude (°)
Surface	0.00	0.00	0.00	0.00	0.00	0.00	0.00	N/A	1507335.67	3459106.06	40.714258	-103.843792
KB Adjusted	6.00	0.00	0.00	6.00	0.00	0.00	0.00	0.00	1507335.67	3459106.06	40.714258	-103.843792
First Surface Survey	85.00	0.22	277.13	85.00	0.15	0.02	-0.15	0.28	1507335.69	3459105.91	40.714258	-103.843793
	176.00	0.18	124.11	176.00	0.21	-0.04	-0.21	0.43	1507335.63	3459105.86	40.714258	-103.843793
	267.00	0.18	116.47	267.00	-0.04	-0.18	0.04	0.03	1507335.49	3459106.10	40.714257	-103.843792
	358.00	1.49	226.77	357.99	0.70	-1.06	-0.69	1.72	1507334.60	3459105.39	40.714255	-103.843795
	448.00	2.59	226.86	447.93	3.04	-3.25	-3.03	1.22	1507332.36	3459103.09	40.714249	-103.843803
	537.00	4.17	229.17	536.77	6.96	-6.74	-6.95	1.78	1507328.80	3459099.24	40.714239	-103.843817
	627.00	5.89	215.43	626.43	12.13	-12.64	-12.10	2.32	1507322.80	3459094.20	40.714223	-103.843836
	716.00	7.91	222.73	714.78	18.95	-20.86	-18.90	2.47	1507314.46	3459087.55	40.714201	-103.843860
	806.00	9.32	221.06	803.76	27.96	-30.91	-27.89	1.59	1507304.25	3459078.75	40.714173	-103.843893
	895.00	11.56	225.71	891.28	39.10	-42.57	-39.01	2.69	1507292.38	3459067.85	40.714141	-103.843933
	984.00	15.12	224.75	977.87	53.69	-57.05	-53.57	4.01	1507277.63	3459053.56	40.714101	-103.843985
	1074.00	16.74	225.01	1064.41	71.16	-74.55	-71.00	1.80	1507259.81	3459036.46	40.714053	-103.844048
	1163.00	16.88	224.22	1149.61	89.27	-92.87	-89.08	0.30	1507241.15	3459018.73	40.714003	-103.844113
	1253.00	17.53	221.67	1235.58	107.44	-112.36	-107.20	1.11	1507221.33	3459000.98	40.713950	-103.844179
	1342.00	19.95	219.47	1319.86	126.05	-134.10	-125.77	2.83	1507199.25	3458982.82	40.713890	-103.844246
	1431.00	20.30	220.34	1403.42	145.74	-157.58	-145.41	0.52	1507175.40	3458963.62	40.713825	-103.844317
	1521.00	20.57	219.21	1487.76	165.90	-181.73	-165.52	0.53	1507150.88	3458943.97	40.713759	-103.844389
Last Surface Survey	1542.00	20.17	220.00	1507.45	170.57	-187.37	-170.18	2.31	1507145.16	3458939.42	40.713744	-103.844406
9 5/8" Casing	1580.00	20.23	219.55	1543.11	178.98	-197.45	-178.57	0.44	1507134.92	3458931.21	40.713716	-103.844436
First SLB MWD Survey	1605.00	20.27	219.25	1566.56	184.49	-204.14	-184.06	0.44	1507128.13	3458925.85	40.713698	-103.844456
	1694.00	19.93	217.86	1650.14	203.60	-228.05	-203.13	0.66	1507103.87	3458907.23	40.713632	-103.844525
	1784.00	19.51	216.12	1734.87	221.93	-252.30	-221.40	0.80	1507079.28	3458889.41	40.713565	-103.844591
	1873.00	20.07	218.38	1818.61	240.22	-276.28	-239.64	1.07	1507054.97	3458871.62	40.713500	-103.844656
	1963.00	20.05	220.54	1903.15	259.89	-300.11	-259.26	0.82	1507030.77	3458852.46	40.713434	-103.844727
	2052.00	20.14	221.35	1986.73	279.97	-323.21	-279.30	0.33	1507007.31	3458832.85	40.713371	-103.844799
	2142.00	20.80	221.01	2071.05	300.74	-346.90	-300.02	0.75	1506983.24	3458812.58	40.713306	-103.844874
	2232.00	19.66	221.65	2155.50	321.34	-370.27	-320.57	1.29	1506959.48	3458792.47	40.713242	-103.844948
	2321.00	20.16	222.58	2239.18	341.72	-392.75	-340.89	0.66	1506936.63	3458772.56	40.713180	-103.845022
	2411.00	19.67	223.28	2323.80	362.64	-415.20	-361.77	0.61	1506913.80	3458752.11	40.713118	-103.845097
	2500.00	20.01	224.16	2407.51	383.56	-437.02	-382.65	0.51	1506891.58	3458731.64	40.713058	-103.845172
	2589.00	19.89	223.75	2491.17	404.69	-458.88	-403.73	0.21	1506869.33	3458710.98	40.712998	-103.845248
	2679.00	19.46	223.20	2575.92	425.58	-480.87	-424.58	0.52	1506846.96	3458690.54	40.712938	-103.845324
	2769.00	19.20	221.99	2660.84	445.79	-502.80	-444.74	0.53	1506824.66	3458670.79	40.712878	-103.845396
	2858.00	20.27	224.47	2744.62	466.43	-524.68	-465.33	1.53	1506802.40	3458650.62	40.712818	-103.845471
	2948.00	19.64	222.66	2829.21	487.65	-546.93	-486.50	0.98	1506779.76	3458630.86	40.712757	-103.845547
	3038.00	20.26	224.40	2913.81	508.85	-569.19	-507.65	0.95	1506757.11	3458609.13	40.712696	-103.845623
	3127.00	20.46	224.64	2997.25	530.60	-591.26	-529.37	0.24	1506734.63	3458587.84	40.712635	-103.845701
	3217.00	21.42	224.52	3081.31	553.23	-614.17	-551.94	1.07	1506711.30	3458565.69	40.712572	-103.845783
	3306.00	19.86	222.74	3164.59	574.93	-636.87	-573.60	1.89	1506688.21	3458544.46	40.712510	-103.845861
	3396.00	20.81	227.31	3248.99	597.11	-658.94	-595.73	2.06	1506665.73	3458522.72	40.712449	-103.845941
	3485.00	19.96	226.54	3332.41	619.80	-680.10	-618.37	1.00	1506644.14	3458500.50	40.712391	-103.846023
	3575.00	19.81	225.55	3417.05	641.88	-701.35	-640.41	0.41	1506622.49	3458478.87	40.712333	-103.846102
	3665.00	19.94	229.26	3501.69	664.44	-722.05	-662.93	1.41	1506601.38	3458456.74	40.712276	-103.846183
	3754.00	20.42	225.67	3585.23	687.09	-742.80	-685.53	1.49	1506580.20	3458434.53	40.712219	-103.846265
	3844.00	19.91	224.44	3669.71	709.09	-764.71	-707.49	0.74	1506557.89	3458412.98	40.712159	-103.846344
	3933.00	20.55	222.45	3753.22	730.29	-787.06	-728.65	1.06	1506535.15	3458392.25	40.712098	-103.846420
	4023.00	20.68	225.22	3837.46	752.28	-809.91	-750.59	1.09	1506511.89	3458370.74	40.712035	-103.846499
	4113.00	20.56	223.72	3921.70	774.53	-832.53	-772.79	0.60	1506488.87	3458348.96	40.711973	-103.846580
	4202.00	20.69	223.33	4004.99	796.17	-855.26	-794.38	0.21	1506465.74	3458327.80	40.711910	-103.846657
	4291.00	20.20	224.36	4088.39	817.75	-877.68	-815.91	0.68	1506442.92	3458306.69	40.711849	-103.846735
	4381.00	19.84	222.08	4172.95	838.90	-900.13	-837.01	0.96	1506420.08	3458286.01	40.711787	-103.846811
	4471.00	20.42	221.35	4257.45	859.55	-923.25	-857.62	0.70	1506396.58	3458265.84	40.711724	-103.846886
	4560.00	20.65	221.13	4340.80	880.18	-946.72	-878.20	0.27	1506372.72	3458245.70	40.711669	-103.846960
	4649.00	20.88	221.67	4424.02	901.10	-970.39	-899.07	0.34	1506348.67	3458225.28	40.711594	-103.847035
	4738.00	20.08	220.19	4507.39	921.55	-993.91	-919.47	1.07	1506324.77	3458205.32	40.711530	-103.847109
	4828.00	20.44	220.95	4591.82	941.87	-1017.58	-939.74	0.50	1506300.73	3458185.50	40.711465	-103.847182
	4917.00	20.60	221.41	4675.18	962.46	-1041.06	-960.28	0.26	1506276.87	3458165.40	40.711400	-103.847256
	5007.00	20.41	221.46	4759.47	983.37	-1064.70	-981.15	0.21	1506252.85	3458144.98	40.711336	-103.847331
	5096.00	20.45	220.45	4842.88	1003.79	-1088.16	-1001.51	0.40	1506229.01	3458125.06	40.711271	-103.847405
	5185.00	19.48	219.21	4926.53	1023.30	-1111.49	-1020.98	1.19	1506205.32	3458106.03	40.711207	-103.847475
	5275.00	20.15	218.14	5011.20	1042.41	-1135.31	-1040.04	0.85	1506181.15	3458087.42	40.711142	-103.847543
	5364.00	19.84	220.60	5094.83	1061.76	-1158.83	-1059.33	1.01	1506157.27	3458068.57	40.711077	-103.847613
	5454.00	25.06	238.03	5178.08	1087.96	-1180.56	-1085.49	9.34	1506135.06	3458042.82	40.711018	-103.847707
	5543.00	32.58	247.13	5256.03	1126.14	-1199.89	-1123.63	9.76	1506115.02	3458025.05	40.710965	-103.847845
	5633.00	40.65	249.51	5328.22	1176.06	-1219.60	-1173.50	9.10	1506094.38	3457955.55	40.710910	-103.848025
	5722.00	48.56	250.55	5391.53	1234.80	-1240.89	-1232.21	8.93	1506072.00	3457897.26	40.710852	-103.848237
	5812.00	53.89	255.10	5447.89	1301.86	-1261.50	-1299.22	7.11	1506050.15	3457830.64	40.710795	-103.848478
	5902.00	56.63	261.27	5499.21	1374.23	-1276.56	-1371.56	6.40	1506033.73	3457758.60	40.710754	-103.848739
	5991.00	59.19	268.69	5546.53	1449.27	-1283.08	-1446.59	7.62	1506020.51	3457683.70	40.710736	-103.849010
	6081.00	68.53	270.18	5586.14	1529.97	-1283.84	-1527.29	10.48	1506023.55	3457603.03	40.710734	-103.849301
	61											

Comments	MD (ft)	Incl (°)	Azim True (°)	TVD (ft)	VSEC (ft)	NS (ft)	EW (ft)	DLS (°/100ft)	Northing (ftUS)	Easting (ftUS)	Latitude (°)	Longitude (°)
Cross Setback												
Heel (1538' FNL, 2549' FWL)	6303.21	85.51	267.39	5630.87	1746.62	-1288.94	-1743.92	2.84	1506014.40	3457386.53	40.710720	-103.850082
6349.00	86.77	267.06	5633.95	1792.26	-1291.15	-1789.56	2.84	1506011.34	3457340.95	40.710714	-103.850247	
6439.00	86.99	267.71	5638.85	1882.04	-1295.25	-1879.33	0.76	1506005.57	3457251.27	40.710703	-103.850571	
6529.00	88.53	267.98	5642.37	1971.91	-1298.63	-1969.19	1.74	1506000.51	3457161.49	40.710693	-103.850895	
6618.00	88.63	268.02	5644.58	2060.83	-1301.73	-2058.11	0.12	1505995.74	3457072.64	40.710685	-103.851216	
6708.00	86.86	267.85	5648.12	2150.71	-1304.97	-2147.98	1.98	1505990.82	3456982.85	40.710676	-103.851540	
6798.00	86.56	269.33	5653.28	2240.54	-1307.18	-2237.80	1.68	1505986.94	3456893.09	40.710670	-103.851864	
6887.00	86.53	269.25	5658.65	2329.37	-1308.29	-2326.63	0.10	1505984.18	3456804.29	40.710667	-103.852184	
6977.00	86.39	268.66	5664.20	2419.18	-1309.92	-2416.45	0.67	1505980.86	3456714.53	40.710662	-103.852508	
7066.00	86.61	269.14	5669.64	2508.01	-1311.63	-2505.26	0.59	1505977.50	3456625.76	40.710658	-103.852829	
7156.00	86.44	269.11	5675.09	2597.83	-1313.00	-2595.09	0.19	1505974.45	3456535.98	40.710654	-103.853153	
7245.00	85.98	269.35	5680.97	2686.63	-1314.19	-2683.89	0.58	1505971.60	3456447.22	40.710650	-103.853473	
7335.00	86.02	269.89	5687.25	2776.41	-1314.79	-2773.66	0.60	1505969.32	3456357.47	40.710649	-103.853797	
7425.00	86.50	269.34	5693.12	2866.22	-1315.39	-2863.47	0.81	1505967.04	3456267.69	40.710647	-103.854121	
7514.00	87.46	269.59	5697.81	2955.09	-1316.22	-2952.34	1.11	1505964.55	3456178.85	40.710645	-103.854441	
7604.00	88.93	269.54	5700.65	3045.04	-1316.91	-3042.29	1.63	1505962.19	3456088.93	40.710643	-103.854766	
7693.00	91.76	269.79	5700.11	3134.03	-1317.43	-3131.28	3.19	1505960.01	3455999.97	40.710641	-103.855087	
7783.00	91.78	269.46	5697.33	3223.99	-1318.02	-3221.23	0.37	1505957.74	3455910.04	40.710640	-103.855411	
7873.00	91.26	269.37	5694.94	3313.95	-1318.93	-3311.20	0.59	1505955.14	3455820.11	40.710637	-103.855736	
7962.00	91.50	269.71	5692.80	3402.92	-1319.65	-3400.17	0.47	1505952.77	3455731.17	40.710635	-103.856056	
8051.00	91.75	270.85	5690.28	3491.89	-1319.21	-3489.13	1.31	1505951.54	3455642.22	40.710636	-103.856377	
8141.00	91.60	269.76	5687.65	3581.84	-1318.73	-3579.09	1.22	1505950.34	3455552.27	40.710638	-103.856702	
8231.00	91.54	269.86	5685.18	3671.81	-1319.03	-3669.05	0.13	1505948.36	3455462.33	40.710637	-103.857026	
8320.00	91.26	269.32	5683.01	3760.78	-1319.67	-3759.03	0.68	1505946.06	3455373.38	40.710635	-103.857347	
8410.00	91.50	269.24	5680.84	3850.75	-1320.80	-3849.99	0.28	1505943.25	3455283.45	40.710632	-103.857672	
8499.00	91.17	269.46	5678.76	3939.72	-1321.81	-3939.96	0.45	1505940.58	3455194.52	40.710629	-103.857993	
8589.00	90.77	269.26	5677.24	4029.70	-1322.81	-4029.94	0.50	1505937.90	3455104.57	40.710626	-103.858317	
8678.00	91.40	269.45	5675.56	4118.68	-1323.82	-4119.92	0.74	1505935.23	3455015.63	40.710624	-103.858638	
8768.00	91.48	269.81	5673.29	4208.66	-1324.40	-4205.89	0.41	1505932.97	3454926.69	40.710622	-103.858963	
8857.00	91.78	269.66	5670.76	4297.62	-1324.81	-4294.85	0.38	1505930.90	3454836.75	40.710621	-103.859284	
8946.00	91.19	270.08	5668.46	4386.59	-1325.01	-4383.82	0.81	1505929.03	3454747.80	40.710620	-103.859605	
9036.00	91.32	269.60	5666.48	4476.57	-1325.26	-4473.80	0.55	1505927.10	3454657.85	40.710619	-103.859929	
9125.00	91.33	269.79	5664.43	4565.54	-1325.74	-4562.78	0.21	1505924.97	3454568.90	40.710618	-103.860250	
9215.00	91.25	269.23	5662.40	4655.52	-1326.51	-4652.75	0.63	1505922.52	3454478.95	40.710616	-103.860575	
9304.00	91.31	269.31	5660.41	4744.49	-1327.64	-4741.72	0.11	1505919.72	3454390.02	40.710613	-103.860895	
9394.00	91.26	269.70	5658.39	4834.46	-1328.42	-4831.69	0.44	1505917.27	3454300.08	40.710611	-103.861220	
9483.00	91.67	270.54	5656.12	4923.43	-1328.23	-4920.66	1.05	1505915.79	3454211.12	40.710611	-103.861541	
9573.00	91.51	269.74	5653.62	5013.40	-1328.01	-5010.63	0.91	1505914.33	3454121.17	40.710612	-103.861865	
9662.00	91.66	269.71	5651.16	5102.36	-1328.44	-5099.59	0.17	1505912.24	3454032.23	40.710610	-103.862186	
9752.00	89.74	269.84	5650.06	5192.35	-1328.79	-5189.58	2.14	1505910.21	3453942.27	40.710609	-103.862511	
9841.00	89.27	269.87	5650.83	5281.35	-1329.02	-5278.58	0.53	1505908.32	3453853.29	40.710609	-103.862832	
9931.00	89.57	269.70	5651.74	5371.34	-1329.35	-5368.57	0.38	1505906.30	3453763.32	40.710608	-103.863157	
10020.00	89.57	269.57	5652.41	5460.34	-1329.92	-5457.57	0.15	1505904.07	3453674.35	40.710606	-103.863478	
10110.00	89.53	269.91	5653.11	5550.34	-1330.33	-5547.56	0.38	1505901.98	3453584.38	40.710605	-103.863802	
10200.00	89.55	269.56	5653.84	5640.33	-1330.74	-5637.56	0.39	1505899.89	3453494.41	40.710604	-103.864127	
10289.00	89.23	269.93	5654.78	5729.33	-1331.14	-5726.55	0.55	1505897.83	3453405.44	40.710603	-103.864448	
10379.00	88.92	269.52	5656.24	5819.32	-1331.57	-5816.54	0.57	1505895.72	3453315.48	40.710601	-103.864772	
10468.00	89.03	269.89	5657.83	5908.30	-1332.03	-5905.52	0.43	1505893.60	3453226.52	40.710600	-103.865093	
10558.00	88.76	269.51	5659.57	5998.28	-1332.50	-5995.51	0.52	1505891.44	3453136.56	40.710599	-103.865418	
10647.00	89.06	269.56	5661.26	6087.27	-1333.22	-6084.49	0.34	1505889.06	3453047.61	40.710597	-103.865739	
10736.00	88.45	269.54	5663.19	6176.24	-1333.92	-6173.46	0.69	1505886.70	3452958.66	40.710595	-103.866060	
10826.00	88.80	269.54	5665.35	6266.22	-1334.65	-6263.43	0.39	1505884.30	3452868.72	40.710593	-103.866384	
10916.00	89.03	269.49	5667.06	6356.20	-1335.41	-6353.41	0.26	1505881.86	3452778.77	40.710590	-103.866709	
11005.00	89.87	269.89	5667.91	6445.19	-1335.89	-6442.41	1.05	1505879.71	3452688.81	40.710589	-103.867030	
11094.00	89.92	269.54	5668.07	6534.19	-1336.33	-6531.41	0.40	1505877.61	3452600.83	40.710588	-103.867351	
11184.00	89.53	269.60	5668.51	6624.19	-1337.01	-6621.40	0.44	1505875.25	3452512.86	40.710586	-103.867675	
11273.00	89.87	269.62	5668.97	6713.19	-1337.61	-6710.40	0.38	1505872.98	3452424.90	40.710584	-103.867996	
11363.00	89.79	269.47	5669.24	6803.18	-1338.33	-6800.40	0.19	1505870.59	3452336.93	40.710582	-103.868321	
11452.00	89.78	269.60	5669.57	6892.18	-1339.05	-6889.39	0.15	1505868.20	3452248.96	40.710580	-103.868642	
11542.00	89.56	270.62	5670.09	6982.18	-1338.88	-6979.39	1.16	1505866.70	3452160.99	40.710580	-103.868967	
11631.00	90.00	270.44	5670.43	7071.17	-1338.05	-7068.38	0.53	1505865.86	3452073.02	40.710583	-103.869288	
11721.00	89.97	270.33	5670.46	7161.17	-1337.45	-7158.38	0.13	1505864.78	3451985.05	40.710584	-103.869612	
11810.00	89.19	270.24	5671.11	7250.16	-1337.01	-7247.38	0.88	1505863.56	3451897.01	40.710585	-103.869933	
11899.00	88.21	270.32	5673.13	7339.14	-1336.57	-7336.35	1.10	1505862.33	3451809.04	40.710586	-103.870254	
11989.00	88.85	270.34	5675.44	7429.10	-1336.05	-7426.32	0.71	1505861.17	3451721.08	40.710588	-103.870579	
12079.00	89.05	270.33	5677.09	7519.09	-1335.53	-7516.31	0.22	1505860.02	3451633.10	40.710589	-103.870903	
12168.00	88.82	270.20	5678.74	7608.07	-1335.12	-7605.29	0.30	1505858.77	3451545.13	40.710590	-103.871224	
12258.00	88.97	270.17	5680.48	7698.05	-1334.82	-7695.27	0.17	1505857.38	3451457.16	40.710591	-103.871549	
12347.00	89.13	269.97	5681.95	7787.04	-1334.72	-7784.26	0.29	1505855.82	3451369.18	40.710591	-103.871870	
12437.00	88.55	270.07	5683.77	7877.02	-1334.68	-7874.24	0.65	1505854.18	3451281.22	40.710591	-103.872194	
12526.00	89.25	270.08	5685.48	7966.00	-1334.57	-7963.22	0.79	1505852.63	3451193.25	40.710591	-103.872515	
12616.00	89.16	270.66	5686.73	8055.99	-1333.99	-8053.21	0.65	1505851.53	34			

Comments	MD (ft)	Incl (°)	Azim True (°)	TVD (ft)	VSEC (ft)	NS (ft)	EW (ft)	DLS (°/100ft)	Northing (ftUS)	Easting (ftUS)	Latitude (°)	Longitude (°)
	15751.00	91.00	270.77	5716.04	11190.45	-1318.94	-11187.71	1.11	1505808.04	3447945.07	40.710631	-103.884146
	15841.00	90.48	270.22	5714.87	11280.44	-1318.16	-11277.70	0.84	1505807.14	3447855.08	40.710633	-103.884471
	15931.00	90.40	270.65	5714.18	11370.43	-1317.47	-11367.70	0.49	1505806.14	3447765.09	40.710635	-103.884795
	16020.00	90.78	270.72	5713.27	11459.42	-1316.41	-11456.69	0.43	1505805.54	3447676.10	40.710637	-103.885116
	16110.00	88.36	269.82	5713.94	11549.40	-1315.99	-11546.67	2.87	1505804.28	3447586.12	40.710638	-103.885441
	16199.00	88.95	270.65	5716.03	11638.38	-1315.62	-11635.65	1.14	1505802.99	3447497.16	40.710639	-103.885762
	16289.00	88.61	270.05	5717.95	11728.35	-1315.07	-11725.62	0.77	1505801.86	3447407.19	40.710641	-103.886087
	16379.00	88.88	270.07	5719.92	11818.33	-1314.98	-11815.60	0.30	1505800.27	3447317.22	40.710641	-103.886411
	16468.00	88.67	269.26	5721.82	11907.31	-1315.50	-11904.58	0.94	1505798.09	3447228.27	40.710639	-103.886732
	16558.00	88.60	270.05	5723.96	11997.28	-1316.04	-11994.55	0.88	1505795.87	3447138.33	40.710638	-103.887057
	16647.00	88.46	269.54	5726.25	12086.25	-1316.36	-12083.52	0.59	1505793.89	3447049.38	40.710637	-103.887377
	16736.00	88.13	269.33	5728.90	12175.21	-1317.24	-12172.48	0.44	1505791.35	3446960.46	40.710634	-103.887698
	16826.00	88.29	269.82	5731.71	12265.17	-1317.90	-12262.43	0.57	1505789.00	3446870.53	40.710632	-103.888023
	16915.00	88.64	269.33	5734.09	12354.13	-1318.56	-12351.40	0.68	1505786.68	3446781.60	40.710630	-103.888344
	17005.00	88.76	269.53	5736.13	12444.11	-1319.46	-12441.37	0.26	1505784.10	3446691.66	40.710628	-103.888668
	17095.00	88.46	269.71	5738.32	12534.08	-1320.05	-12531.34	0.39	1505781.83	3446601.71	40.710626	-103.888993
	17184.00	88.61	269.75	5740.59	12623.05	-1320.47	-12620.31	0.17	1505779.75	3446512.77	40.710625	-103.889314
	17274.00	88.57	269.45	5742.81	12713.02	-1321.10	-12710.28	0.34	1505777.44	3446422.83	40.710623	-103.889638
	17364.00	88.66	269.55	5744.98	12802.99	-1321.89	-12800.25	0.15	1505774.97	3446332.89	40.710621	-103.889963
	17453.00	88.64	269.47	5747.08	12891.97	-1322.65	-12889.22	0.09	1505772.55	3446243.95	40.710618	-103.890284
	17543.00	88.50	269.77	5749.32	12981.94	-1323.24	-12979.19	0.37	1505770.27	3446154.01	40.710617	-103.890608
	17632.00	88.79	269.69	5751.43	13070.91	-1323.66	-13068.17	0.34	1505768.19	3446065.06	40.710615	-103.890929
	17722.00	88.82	269.76	5753.31	13160.89	-1324.10	-13158.15	0.08	1505766.08	3445975.10	40.710614	-103.891254
	17811.00	88.70	269.76	5755.23	13249.87	-1324.47	-13247.12	0.13	1505764.05	3445886.15	40.710613	-103.891575
	17901.00	88.50	269.56	5757.43	13339.84	-1325.00	-13337.10	0.31	1505761.83	3445796.20	40.710611	-103.891899
	17990.00	88.56	269.56	5759.71	13428.81	-1325.69	-13426.06	0.07	1505759.49	3445707.26	40.710609	-103.892220
	18080.00	88.64	269.75	5761.91	13518.78	-1326.23	-13516.04	0.23	1505757.27	3445617.32	40.710608	-103.892545
	18170.00	88.88	269.76	5763.86	13608.76	-1326.61	-13606.01	0.27	1505755.20	3445527.36	40.710606	-103.892869
	18259.00	88.56	269.47	5765.85	13697.74	-1327.21	-13694.99	0.49	1505752.94	3445438.42	40.710605	-103.893190
	18349.00	88.62	269.76	5768.06	13787.71	-1327.81	-13784.96	0.33	1505750.66	3445348.47	40.710603	-103.893515
	18438.00	88.64	269.81	5770.19	13876.69	-1328.15	-13873.93	0.06	1505748.66	3445259.52	40.710602	-103.893835
	18528.00	88.40	270.11	5772.52	13966.66	-1328.21	-13963.90	0.43	1505746.92	3445169.57	40.710601	-103.894160
	18617.00	88.36	270.12	5775.03	14056.62	-1328.03	-14052.87	0.05	1505745.43	3445080.62	40.710602	-103.894481
	18707.00	88.30	270.05	5777.65	14146.58	-1327.90	-14142.83	0.10	1505743.89	3444990.67	40.710602	-103.894805
	18797.00	88.26	270.01	5780.36	14236.54	-1327.85	-14232.79	0.06	1505742.25	3444900.73	40.710602	-103.895130
	18886.00	88.84	269.62	5782.61	14326.51	-1328.14	-14321.76	0.79	1505740.31	3444811.78	40.710601	-103.895451
	18976.00	88.76	269.73	5784.49	14414.49	-1328.65	-14411.74	0.15	1505738.11	3444721.83	40.710600	-103.895775
	19065.00	88.60	269.68	5786.54	14503.47	-1329.11	-14500.71	0.19	1505736.00	3444632.88	40.710598	-103.896096
Cross Setback Toe (1472' FNL, 300' FWL)	19103.60	88.58	269.64	5787.49	14542.05	-1329.34	-14539.30	0.12	1505735.04	3444543.93	40.710597	-103.896235
	19155.00	88.55	269.58	5788.78	14593.44	-1329.69	-14590.68	0.12	1505733.73	3444454.94	40.710596	-103.896421
Last SLB MWD Survey Projection to TD (1472' FNL, 184' FWL)	19187.00	88.55	269.68	5789.59	14625.43	-1329.90	-14622.67	0.31	1505732.93	3444365.96	40.710596	-103.896536
	19220.00	88.55	269.68	5790.43	14658.42	-1330.08	-14655.66	0.00	1505732.13	3444277.98	40.710595	-103.896655

Survey Type: Def Survey

Survey Error Model: ISCWSA Rev 3 \*\*\* 3-D 95.000% Confidence 2.7955 sigma  
 Survey Program:

Description	Part	MD From (ft)	MD To (ft)	EOU Freq (ft)	Hole Size	Casing Diameter (in)	Survey Tool Type	Borehole / Survey
	1	0.000	6.000	1/98.425	13.500	9.625	A001Mb_MWD-Depth Only	Speed Goat Fed 3432-03H / Speed Goat Fed 3432-03H
	1	6.000	21.000	Act Stns	13.500	9.625	A001Mb_MWD-Depth Only	Speed Goat Fed 3432-03H / Speed Goat Fed 3432-03H
	1	21.000	1542.000	Act Stns	13.500	9.625	A001Mb_MWD	Speed Goat Fed 3432-03H / Speed Goat Fed 3432-03H
	1	1542.000	19220.000	Act Stns	8.500	5.500	A010Mb_MWD+IFR1+SAG+MS	Speed Goat Fed 3432-03H / Speed Goat Fed 3432-03H IFR1+MS+SAG 0' to 19220'

...Speed Goat Fed 3432-03H/Speed Goat Fed 3432-03H IFR1+MS+SAG 0' to 19220' Definitive