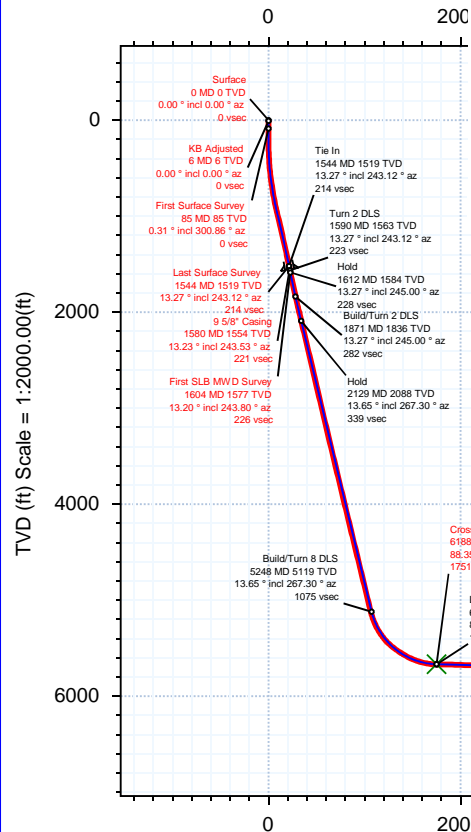
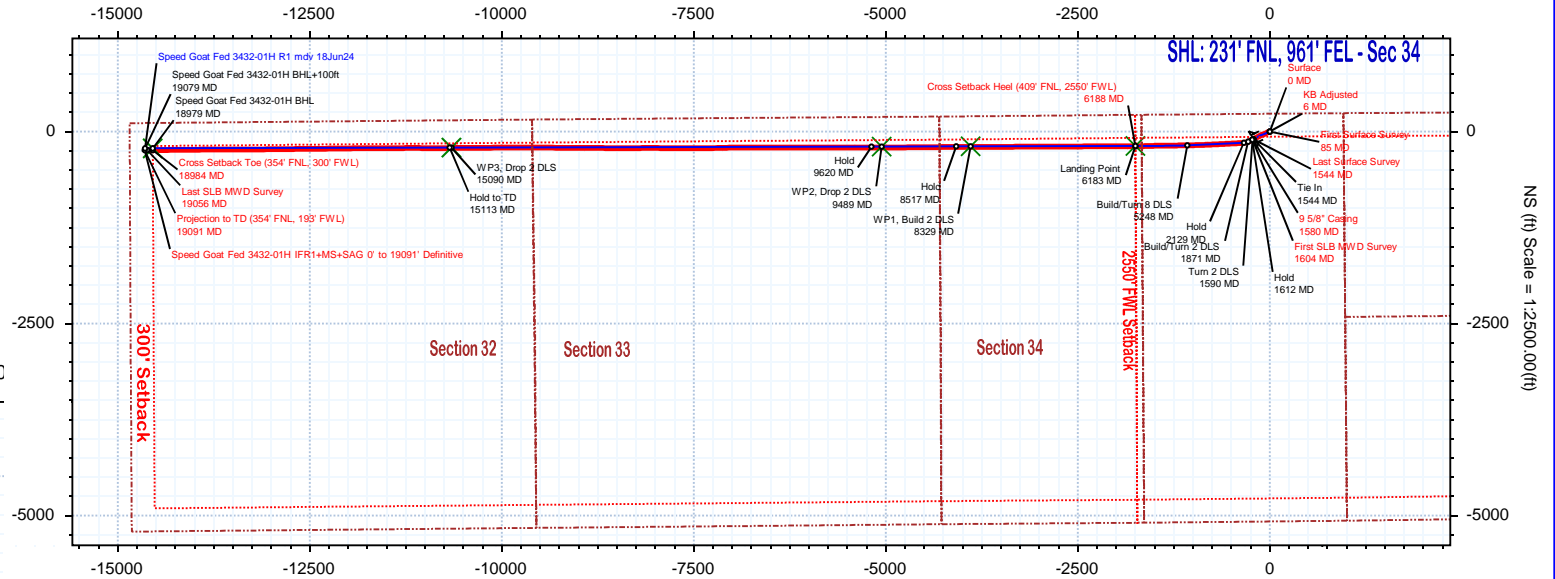
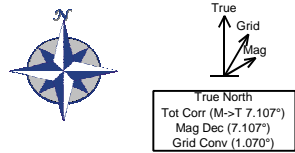


<b>Borehole:</b> Speed Goat Fed 3432-01H	<b>Well:</b> Speed Goat Fed 3432-01H	<b>Field:</b> CO, Weld County (NAD 83 NZ) - 2019	<b>Structure:</b> Verdad Resources 34-09N-58W (Speed Goat 3432-3435 Pad)
---	---	---	---

<b>Gravity &amp; Magnetic Parameters</b>				<b>Surface Location</b> NAD83 Colorado State Plane, Northern Zone, US Feet				<b>Miscellaneous</b>			
Model: HDGM 2024	Dip: 66.844°	Date: 22-Jul-2024	Lat: N 40 42 51.64	Northing: 1507367.36ftUS	Grid Conv: 1.0701°	Slot: Speed Goat Fed 3432-01H	TVD Ref: RKB = 21ft(4743ft above Mean Sea Level)				
MagDec: 7.107°	FS: 51800.927mT	Gravity FS: 999.096mg (9.80665 Based)	Lon: W 103 50 37.65	Easting: 3459105.19ftUS	Scale Fact: 0.99998953	Plan: Speed Goat Fed 3432-01H IFR1+MS+SAG 0' to 19091' Definitive					

EW (ft) Scale = 1:2500.00(ft)



Critical Point	MD	INCL	AZIM	TVD	VSEC	N(+)/S(-)	E(+)/W(-)	DLS
Surface	0.00	0.00	0.00	0.00	0.00	0.00	0.00	0.00
KB Adjusted	6.00	0.00	0.00	6.00	0.00	0.00	0.00	0.00
First Surface Survey	85.00	0.31	300.86	85.00	0.18	0.11	-0.18	0.39
Last Surface Survey	1544.00	13.27	243.12	1518.53	213.69	-99.78	-213.45	1.84
9 5/8\" Casing	1580.00	13.23	243.53	1553.57	221.07	-103.48	-220.82	0.28
First SLB MWD Survey	1604.00	13.20	243.80	1576.94	225.99	-105.91	-225.74	0.28
Cross Setback Heel (409' FNL, 2550' FWL)	6187.59	88.35	270.02	5667.21	1750.51	-192.04	-1750.05	1.34
Cross Setback Toe (354' FNL, 300' FWL)	18984.20	89.17	268.83	5783.83	14544.41	-242.64	-14543.86	1.79
Last SLB MWD Survey	19056.00	89.01	269.59	5785.03	14616.20	-243.48	-14615.65	0.39
Projection to TD (354' FNL, 193' FWL)	19091.00	89.01	269.59	5785.63	14651.19	-243.73	-14650.64	0.00

Vertical Section (ft) Azim = 269.86° Scale = 1:2000.00(ft) Origin = 0N/-S, 0E/-W



# Speed Goat Fed 3432-01H IFR1+MS+SAG 0' to 19091' Definitive Survey

## Geodetic Report

(Def Survey)



**Report Date:** July 29, 2024 - 09:04 AM  
**Client:** Verdad Resources  
**Field:** CO, Weld County (NAD 83 NZ) - 2019  
**Structure / Slot:** Verdad Resources 34-09N-58W (Speed Goat 3432-3435 Pad) / Speed Goat Fed 3432-01H  
**Well:** Speed Goat Fed 3432-01H  
**Borehole:** Speed Goat Fed 3432-01H  
**UWI / API#:** Unknown / 05-123-52496  
**Survey Name:** Speed Goat Fed 3432-01H IFR1+MS+SAG 0' to 19091' Definitive  
**Survey Date:** May 07, 2024  
**Tort / AHD / DDI / ERD Ratio:** 207.950 ° / 14684.646 ft / 7.003 / 2.538  
**Coordinate Reference System:** NAD83 Colorado State Plane, Northern Zone, US Feet  
**Location Lat / Long:** N 40° 42' 51.64202", W 103° 50' 37.65484"  
**Location Grid N/E Y/X:** N 1507367.360 ftUS, E 3459105.190 ftUS  
**CRS Grid Convergence Angle:** 1.0701 °  
**Grid Scale Factor:** 0.99998953  
**Version / Patch:** 2.10.836.0

**Survey / DLS Computation:** Minimum Curvature / Lubinski  
**Vertical Section Azimuth:** 269.860 ° (True North)  
**Vertical Section Origin:** 0.000 ft, 0.000 ft  
**TVD Reference Datum:** RKB = 21ft  
**TVD Reference Elevation:** 4743.000 ft above Mean Sea Level  
**Seabed / Ground Elevation:** 4722.000 ft above Mean Sea Level  
**Magnetic Declination:** 7.107 °  
**Total Gravity Field Strength:** 999.0960mgn (9.80665 Based)  
**Gravity Model:** GARM  
**Total Magnetic Field Strength:** 51800.927 nT  
**Magnetic Dip Angle:** 66.844 °  
**Declination Date:** July 22, 2024  
**Magnetic Declination Model:** HDGM 2024  
**North Reference:** True North  
**Grid Convergence Used:** 0.0000 °  
**Total Corr Mag North->True North:** 7.1067 °  
**Local Coord Referenced To:** Well Head

Comments	MD (ft)	Incl (°)	Azim True (°)	TVD (ft)	VSEC (ft)	NS (ft)	EW (ft)	DLS (°/100ft)	Northing (ftUS)	Easting (ftUS)	Latitude (°)	Longitude (°)
Surface	0.00	0.00	0.00	0.00	0.00	0.00	0.00	N/A	1507367.36	3459105.19	40.714345	-103.843793
KB Adjusted	6.00	0.00	0.00	6.00	0.00	0.00	0.00	0.00	1507367.36	3459105.19	40.714345	-103.843793
First Surface Survey	85.00	0.31	300.86	85.00	0.18	0.11	-0.18	0.39	1507367.47	3459105.00	40.714345	-103.843794
	176.00	0.04	336.98	176.00	0.41	0.27	-0.41	0.31	1507367.62	3459104.78	40.714346	-103.843794
	267.00	0.75	258.67	267.00	1.00	0.18	-1.00	0.82	1507367.52	3459104.18	40.714345	-103.843797
	358.00	2.46	257.27	357.96	3.49	-0.37	-3.49	1.88	1507366.92	3459101.70	40.714344	-103.843806
	448.00	4.04	246.90	447.81	8.30	-2.04	-8.29	1.87	1507365.17	3459096.94	40.714339	-103.843823
	537.00	6.81	248.92	536.40	16.11	-5.17	-16.10	3.12	1507361.89	3459089.19	40.714331	-103.843851
	627.00	9.10	242.24	625.53	27.41	-10.40	-27.38	2.74	1507356.45	3459078.01	40.714316	-103.843892
	716.00	9.98	241.53	713.30	40.43	-17.36	-40.39	1.00	1507349.25	3459065.13	40.714297	-103.843939
	806.00	11.25	245.49	801.76	55.29	-24.72	-55.23	1.63	1507341.62	3459050.43	40.714277	-103.843992
	895.00	12.92	249.27	888.79	72.52	-31.84	-72.44	2.08	1507334.17	3459033.36	40.714258	-103.844054
	984.00	14.28	251.55	975.29	92.25	-38.84	-92.16	1.64	1507326.81	3459013.77	40.714238	-103.844125
	1074.00	14.55	246.46	1062.46	113.17	-46.87	-113.05	1.44	1507318.39	3458993.03	40.714216	-103.844201
	1163.00	14.19	241.27	1148.68	133.01	-56.58	-132.87	1.50	1507308.31	3458973.40	40.714190	-103.844272
	1253.00	14.37	241.53	1235.90	152.52	-67.20	-152.36	0.21	1507297.33	3458954.11	40.714161	-103.844343
	1342.00	14.37	242.94	1322.11	172.09	-77.49	-171.90	0.39	1507286.67	3458934.77	40.714132	-103.844413
	1431.00	13.32	241.27	1408.53	190.94	-87.44	-190.73	1.26	1507276.37	3458916.13	40.714105	-103.844481
	1521.00	13.14	241.36	1496.14	209.04	-97.33	-208.80	0.20	1507266.15	3458898.25	40.714078	-103.844546
Last Surface Survey	1544.00	13.27	243.12	1518.53	213.69	-99.78	-213.45	1.84	1507263.62	3458893.65	40.714071	-103.844563
9 5/8" Casing	1580.00	13.23	243.53	1553.57	221.07	-103.48	-220.82	0.28	1507259.77	3458886.34	40.714061	-103.844590
First SLB MWD Survey	1604.00	13.20	243.80	1576.94	225.99	-105.91	-225.74	0.28	1507257.25	3458881.47	40.714054	-103.844607
	1693.00	13.49	243.98	1663.53	244.46	-114.95	-244.18	0.33	1507247.87	3458863.20	40.714029	-103.844674
	1783.00	13.71	246.70	1751.01	263.71	-123.78	-263.41	0.75	1507238.69	3458844.14	40.714005	-103.844743
	1873.00	13.48	246.33	1838.49	283.14	-132.21	-282.81	0.27	1507229.89	3458824.90	40.713982	-103.844813
	1962.00	13.52	251.26	1925.03	302.51	-139.72	-302.17	1.29	1507222.03	3458805.69	40.713962	-103.844883
	2052.00	13.58	259.26	2012.54	322.87	-145.06	-322.51	2.08	1507216.30	3458785.45	40.713947	-103.844956
	2141.00	13.44	266.68	2099.08	343.47	-147.61	-343.11	1.95	1507213.37	3458764.91	40.713940	-103.845031
	2231.00	13.65	264.93	2186.58	364.49	-149.16	-364.13	0.51	1507211.43	3458743.92	40.713936	-103.845106
	2321.00	13.24	267.56	2274.11	385.37	-150.53	-385.00	0.82	1507209.67	3458723.07	40.713932	-103.845182
	2410.00	13.21	267.66	2360.75	405.71	-151.38	-405.34	0.04	1507208.44	3458702.75	40.713929	-103.845255
	2501.00	13.32	267.31	2449.32	426.58	-152.30	-426.20	0.15	1507207.13	3458681.91	40.713927	-103.845330
	2589.00	13.28	266.28	2534.96	446.79	-153.43	-446.42	0.27	1507205.62	3458661.72	40.713924	-103.845403
	2678.00	12.53	266.76	2621.71	466.63	-154.64	-466.26	0.85	1507204.04	3458641.91	40.713921	-103.845475
	2768.00	13.36	266.92	2709.43	486.77	-155.75	-486.39	0.92	1507202.56	3458621.80	40.713917	-103.845548
	2858.00	13.03	267.94	2797.05	507.29	-156.67	-506.91	0.45	1507201.25	3458601.30	40.713915	-103.845622
	2947.00	13.30	267.09	2883.71	527.54	-157.55	-527.16	0.37	1507199.99	3458581.07	40.713913	-103.845695
	3037.00	13.28	265.91	2971.30	548.20	-158.82	-547.81	0.30	1507198.34	3458560.45	40.713909	-103.845769
	3127.00	13.05	267.22	3058.94	568.66	-160.05	-568.27	0.42	1507196.73	3458540.02	40.713906	-103.845843
	3216.00	13.57	265.92	3145.54	589.11	-161.28	-588.72	0.67	1507195.12	3458519.59	40.713902	-103.845917
	3306.00	13.29	266.66	3233.08	609.97	-162.63	-609.58	0.37	1507193.38	3458498.76	40.713899	-103.845992
	3395.00	13.55	267.20	3319.65	630.60	-163.74	-630.20	0.32	1507191.89	3458478.17	40.713896	-103.846066
	3485.00	13.48	267.01	3407.16	651.61	-164.80	-651.21	0.09	1507190.43	3458457.18	40.713893	-103.846142
	3575.00	13.44	268.01	3494.69	672.54	-165.71	-672.14	0.26	1507189.13	3458436.27	40.713890	-103.846218
	3664.00	13.50	268.53	3581.24	693.27	-166.33	-692.86	0.15	1507188.12	3458415.56	40.713888	-103.846292
	3754.00	13.68	266.89	3668.72	714.40	-167.18	-713.99	0.47	1507186.88	3458394.46	40.713886	-103.846369
	3843.00	13.42	266.78	3755.24	735.22	-168.33	-734.81	0.29	1507185.34	3458373.66	40.713883	-103.846444
	3933.00	13.49	267.39	3842.77	756.14	-169.40	-755.72	0.18	1507183.88	3458352.77	40.713880	-103.846519
	4022.00	13.57	266.88	3929.30	776.93	-170.44	-776.52	0.16	1507182.45	3458332.00	40.713877	-103.846594
	4112.00	13.30	267.23	4016.84	797.82	-171.51	-797.40	0.31	1507180.99	3458311.14	40.713874	-103.846669
	4201.00	13.82	268.23	4103.36	818.67	-172.34	-818.25	0.64	1507179.78	3458290.31	40.713872	-103.846745
	4291.00	13.87	267.45	4190.74	840.19	-173.15	-839.77	0.21	1507178.56	3458268.81	40.713870	-103.846822
	4380.00	13.14	268.39	4277.28	860.97	-173.91	-860.54	0.86	1507177.41	3458248.06	40.713868	-103.846897
	4470.00	13.78	267.08	4364.81	881.90	-174.74	-881.47	0.79	1507176.19	3458227.14	40.713865	-103.846973
	4560.00	13.93	267.87	4452.19	903.43	-175.69	-903.00	0.27	1507174.84	3458206.64	40.713863	-103.847050
	4648.00	13.58	268.34	4537.67	924.35	-176.38	-923.92	0.42	1507173.76	3458184.74	40.713861	-103.847126
	4738.00	13.40	269.14	4625.19	945.34	-176.84	-944.91	0.29	1507172.90	3458163.76	40.713860	-103.847201
	4827.00	13.75	267.76	4711.70	966.22	-177.41	-965.79	0.54	1507171.94	3458142.90	40.713858	-103.847277
	4916.00	13.67	267.49	4798.16	987.29	-178.29	-986.86	0.12	1507170.68	3458121.84	40.713856	-103.847353
	5006.00	13.67	268.23	4885.61	1008.55	-179.08	-1008.12	0.19	1507169.49	3458100.61	40.713853	-103.847429
	5095.00	13.46	268.76	4972.13	1029.42	-179.63	-1028.98	0.27	1507168.55	3458079.75	40.713852	-103.847505
	5185.00	13.56	268.56	5059.64	1050.44	-180.12	-1050.00	0.12	1507167.66	3458058.75	40.713851	-103.847581
	5274.00	15.95	269.31	5145.70	1073.10	-180.53	-1072.66	2.69	1507166.83	3458036.10	40.713849	-103.847656
	5364.00	22.89	271.55	5230.53	1103.00	-180.21	-1102.56	7.75	1507166.60	3458016.20	40.713850	-103.847731
	5453.00	29.82	268.44	5310.23	1142.47	-180.34	-1142.04	7.94	1507165.73	3457996.73	40.713850	-103.847806
	5543.00	37.47	268.72	5395.10	1192.29	-181.56	-1191.85	8.50	1507163.57	3457976.95	40.713847	-103.848002
	5632.00	46.59	269.71	5451.14	1251.81	-182.33	-1251.37	10.27	1507161.69	3457957.46	40.713844	-103.848307
	5722.00	54.13	269.78	5508.52	1321.06	-182.64	-1320.62	8.38	1507160.09	3457938.23	40.713844	-103.848557
	5812.00	58.51	269.20	5558.41	1395.94	-183.31	-1395.49	4.90	1507158.02	3457919.38	40.713842	-103.848827
	5901.00	64.34	268.46	5600.97	1474.05	-184.92	-1473.60	6.59	1507154.95	3457899.32	40.713837	-103.849109
	5991.00	72.05	268.02	5634.37	1557.51	-187.50	-1557.06	8.58	1507150.82	3457879.92	40.713830	-103.849410
	6080.00	79.11	268.10	5656.52	1643.61	-190.41	-1643.15	7.93	1507146.30	3457860.99	40.713822	-103.849720

Comments	MD (ft)	Incl (°)	Azim True (°)	TVD (ft)	VSEC (ft)	NS (ft)	EW (ft)	DLS (°/100ft)	Northing (ftUS)	Easting (ftUS)	Latitude (°)	Longitude (°)
Cross Setback												
Heel (40' FNL, 2550' FWL)	6187.59	88.35	270.02	5667.21	1750.51	-192.04	-1750.05	1.34	1507142.67	3457359.05	40.713818	-103.850106
	6259.00	89.05	270.68	5668.83	1821.90	-191.61	-1821.44	1.34	1507141.77	3457287.67	40.713819	-103.850363
	6349.00	88.74	269.39	5670.56	1911.88	-191.55	-1911.42	1.47	1507140.15	3457197.71	40.713819	-103.850688
	6438.00	88.02	269.77	5673.08	2000.84	-192.20	-2000.38	0.91	1507137.83	3457108.77	40.713817	-103.851009
	6528.00	88.03	269.73	5676.18	2090.79	-192.60	-2090.33	0.05	1507135.76	3457018.85	40.713816	-103.851333
	6618.00	88.65	269.23	5678.79	2180.75	-193.41	-2180.28	0.88	1507133.26	3456928.93	40.713814	-103.851658
	6707.00	88.36	270.37	5681.11	2269.72	-193.72	-2269.25	1.32	1507131.29	3456839.98	40.713813	-103.851979
	6797.00	87.98	269.75	5683.99	2359.67	-193.63	-2359.21	0.81	1507129.71	3456750.04	40.713813	-103.852303
	6886.00	88.65	269.47	5686.60	2448.63	-194.23	-2448.16	0.82	1507127.44	3456661.11	40.713812	-103.852624
	6976.00	88.51	269.53	5688.83	2538.60	-195.02	-2538.13	0.17	1507124.97	3456571.22	40.713809	-103.852949
	7066.00	89.13	269.62	5690.69	2628.58	-195.69	-2628.11	0.70	1507122.63	3456481.17	40.713808	-103.853273
	7155.00	88.78	269.82	5692.31	2717.57	-196.12	-2717.10	0.45	1507120.53	3456392.27	40.713806	-103.853594
	7245.00	89.24	270.09	5693.86	2807.55	-196.19	-2807.08	0.59	1507118.78	3456302.30	40.713806	-103.853919
	7335.00	89.12	269.79	5695.15	2897.54	-196.29	-2897.07	0.36	1507117.00	3456212.33	40.713806	-103.854243
	7424.00	88.91	269.98	5696.68	2986.53	-196.47	-2986.06	0.32	1507115.16	3456123.36	40.713805	-103.854564
	7513.00	88.86	269.89	5698.41	3075.51	-196.57	-3075.04	0.12	1507113.40	3456034.39	40.713805	-103.854885
	7603.00	88.86	269.96	5700.21	3165.49	-196.68	-3165.02	0.08	1507111.60	3455944.43	40.713805	-103.855210
	7693.00	88.89	269.20	5701.97	3255.48	-197.34	-3255.00	0.84	1507109.26	3455854.48	40.713803	-103.855534
	7782.00	87.99	269.22	5704.40	3344.44	-198.57	-3343.96	1.01	1507106.37	3455765.56	40.713799	-103.855855
	7872.00	87.87	270.14	5707.65	3434.38	-199.07	-3433.90	1.03	1507104.19	3455675.65	40.713798	-103.856180
	7962.00	88.05	269.85	5710.85	3524.32	-199.08	-3523.84	0.38	1507102.51	3455585.72	40.713798	-103.856504
	8051.00	88.32	270.56	5713.67	3613.27	-198.76	-3612.80	0.85	1507101.16	3455496.78	40.713799	-103.856825
	8140.00	88.11	269.72	5716.44	3702.23	-198.54	-3701.75	0.97	1507099.72	3455407.84	40.713799	-103.857146
	8230.00	87.79	269.48	5719.66	3792.17	-199.17	-3791.69	0.44	1507097.41	3455317.93	40.713798	-103.857470
	8320.00	87.46	269.45	5723.39	3882.09	-200.01	-3881.61	0.37	1507094.89	3455228.04	40.713795	-103.857795
	8409.00	87.73	269.65	5727.12	3971.01	-200.71	-3970.53	0.38	1507092.53	3455139.15	40.713793	-103.858115
	8499.00	89.59	269.81	5729.23	4060.98	-201.13	-4060.50	2.07	1507090.43	3455049.20	40.713792	-103.858440
	8588.00	91.81	269.64	5728.14	4149.97	-201.56	-4149.49	2.50	1507088.34	3454960.24	40.713791	-103.858761
	8678.00	92.39	269.53	5724.84	4239.91	-202.21	-4239.42	0.66	1507086.01	3454870.34	40.713789	-103.859085
	8767.00	92.06	269.45	5721.39	4328.84	-203.00	-4328.35	0.38	1507083.56	3454781.44	40.713787	-103.859406
	8856.00	92.02	268.92	5718.22	4417.77	-204.27	-4417.29	0.60	1507080.63	3454692.54	40.713783	-103.859727
	8946.00	92.28	270.34	5714.84	4507.71	-204.85	-4507.22	1.60	1507078.37	3454602.64	40.713782	-103.860051
	9035.00	92.06	269.28	5711.47	4596.64	-205.15	-4596.15	1.22	1507076.41	3454513.73	40.713781	-103.860372
	9125.00	92.12	269.42	5708.19	4686.58	-205.17	-4686.09	0.17	1507073.72	3454423.83	40.713778	-103.860697
	9215.00	92.22	269.77	5704.78	4776.51	-206.80	-4776.02	0.40	1507071.40	3454333.92	40.713776	-103.861021
	9304.00	92.00	269.93	5701.51	4866.45	-207.03	-4866.96	0.31	1507069.51	3454245.01	40.713775	-103.861342
	9393.00	92.31	269.55	5698.16	4954.39	-207.44	-4953.90	0.55	1507067.44	3454156.09	40.713774	-103.861663
	9483.00	92.26	269.81	5694.57	5044.32	-207.94	-5043.82	0.29	1507065.26	3454066.19	40.713773	-103.861987
	9572.00	91.78	269.84	5691.43	5133.26	-208.21	-5132.77	0.54	1507063.33	3453977.27	40.713772	-103.862308
	9661.00	89.68	270.17	5689.30	5222.25	-208.20	-5221.76	2.39	1507061.67	3453888.30	40.713772	-103.862629
	9751.00	89.39	268.97	5691.03	5312.24	-208.88	-5311.75	1.37	1507059.32	3453798.34	40.713770	-103.862953
	9841.00	89.79	270.10	5691.68	5402.24	-209.61	-5401.74	1.33	1507056.91	3453708.37	40.713768	-103.863278
	9930.00	89.87	270.31	5691.94	5491.24	-209.29	-5490.74	0.25	1507055.56	3453619.38	40.713769	-103.863599
	10020.00	89.68	270.62	5692.29	5581.23	-208.56	-5580.74	0.40	1507054.61	3453529.39	40.713771	-103.863924
	10109.00	89.41	269.32	5693.00	5670.22	-208.61	-5669.73	1.49	1507052.90	3453440.41	40.713771	-103.864245
	10199.00	89.84	269.66	5693.59	5760.22	-209.41	-5759.73	0.61	1507050.42	3453350.45	40.713768	-103.864569
	10289.00	89.67	269.86	5693.97	5850.22	-209.79	-5849.72	0.29	1507048.36	3453260.48	40.713767	-103.864894
	10378.00	89.68	270.44	5694.48	5939.22	-209.55	-5938.72	0.65	1507046.93	3453171.49	40.713768	-103.865215
	10468.00	89.62	269.47	5695.03	6029.21	-209.62	-6028.72	1.08	1507045.18	3453081.51	40.713768	-103.865540
	10557.00	89.82	270.49	5695.46	6118.21	-209.65	-6117.72	1.17	1507043.49	3452992.53	40.713767	-103.865861
	10647.00	89.66	270.32	5695.87	6208.21	-209.02	-6207.71	0.26	1507042.45	3452902.54	40.713769	-103.866185
	10736.00	89.53	269.74	5696.50	6297.20	-209.87	-6296.71	0.67	1507040.83	3452813.56	40.713769	-103.866506
	10825.00	89.75	270.33	5697.06	6386.20	-208.92	-6385.71	0.71	1507039.22	3452724.58	40.713769	-103.866827
	10915.00	89.48	269.59	5697.66	6476.20	-208.98	-6475.71	0.88	1507037.48	3452634.60	40.713769	-103.867152
	11004.00	89.83	269.99	5698.20	6565.20	-209.31	-6564.70	0.60	1507035.49	3452545.62	40.713768	-103.867473
	11093.00	89.39	269.59	5698.81	6654.19	-209.63	-6653.70	0.67	1507033.50	3452456.65	40.713767	-103.867794
	11183.00	89.76	269.41	5699.47	6744.19	-210.42	-6743.69	0.46	1507031.04	3452366.69	40.713765	-103.868119
	11273.00	89.78	270.21	5699.84	6834.19	-210.72	-6833.69	0.89	1507029.06	3452276.71	40.713764	-103.868443
	11362.00	89.25	270.16	5700.59	6923.18	-210.43	-6922.69	0.60	1507027.68	3452187.73	40.713765	-103.868764
	11452.00	89.69	269.83	5701.42	7013.18	-210.44	-7012.68	0.61	1507025.99	3452097.75	40.713765	-103.869089
	11541.00	89.71	268.93	5701.89	7102.17	-211.40	-7101.68	1.01	1507023.37	3452008.79	40.713762	-103.869410
	11631.00	89.33	267.83	5702.64	7192.14	-213.94	-7191.64	1.29	1507019.14	3451918.89	40.713755	-103.869735
	11720.00	89.18	269.02	5703.80	7281.10	-216.39	-7280.59	1.35	1507015.04	3451830.00	40.713748	-103.870055
	11809.00	89.54	269.42	5704.79	7370.09	-217.60	-7369.58	0.60	1507012.16	3451741.05	40.713745	-103.870376
	11899.00	89.48	269.53	5705.56	7460.08	-218.43	-7459.57	0.14	1507009.66	3451651.09	40.713742	-103.870701
	11988.00	89.57	269.86	5706.30	7549.08	-218.90	-7548.57	0.38	1507007.52	3451562.12	40.713741	-103.871022
	12078.00	89.92	270.45	5706.70	7639.08	-218.66	-7638.57	0.76	1507006.09	3451472.14	40.713742	-103.871347
	12167.00	89.94	271.07	5706.81	7728.07	-217.48	-7727.56	0.70	1507005.60	3451383.14	40.713745	-103.871668
	12257.00	89.44	270.31	5707.30	7818.05	-216.39	-7817.55	1.01	1507005.01	3451293.14	40.713748	-103.871992
	12347.00	89.55	270.89	5708.09	7908.04	-215.45	-7907.54	0.66	1507004.27	3451203.15	40.713750	-103.872317
	12436.00	89.86	270.65	5708.55	7997.03	-214.25	-7996.53	0.44	1507003.80	3451114.16	40.713753	-103.872638
	12526.00	89.41	269.90	5709.12	8087.03	-213.82	-8086.53	0.97	1507002.55	3451024.17	40.713754	-103.872963
	12615.00	89.28	268.81	5710.14	8176.01	-214.82	-8175.51	1.23	1506999.89	3450935.22	40.713752	-103.873284
	12705.00	89.68	270.44	5710.96	8266.01	-215.41	-8265.51	1.86	1506997.62	3450846.25	40.713750	-103.873608
	12794.00	89.51	269.86	5711.58	8356.00	-215.18	-8355.00	0.68	1506996.19	3450756.27	40.713750	-103.873929
	12884.00	89.28	269.12	5712.53	8445.00	-215.98	-8444.49	0.86	1506993.71	3450666.31	40.713748	-103.874254
	12974.00	89.81	270.61	5713.25	8534.99	-216.19	-8534.49	1.76	1506991.82</			

Comments	MD (ft)	Incl (°)	Azim True (°)	TVD (ft)	VSEC (ft)	NS (ft)	EW (ft)	DLS (°/100ft)	Northing (ftUS)	Easting (ftUS)	Latitude (°)	Longitude (°)
	15751.00	89.24	269.13	5736.57	11311.71	-215.72	-11311.21	0.51	1506940.43	3447800.12	40.713746	-103.884595
	15840.00	89.13	269.57	5737.84	11400.69	-216.73	-11400.20	0.51	1506937.76	3447711.17	40.713743	-103.884916
	15930.00	89.35	270.13	5739.03	11490.69	-216.97	-11490.19	0.67	1506935.84	3447621.20	40.713742	-103.885240
	16020.00	89.54	270.97	5739.90	11580.67	-216.10	-11580.18	0.96	1506935.03	3447531.21	40.713744	-103.885565
	16109.00	89.28	269.54	5740.82	11669.67	-215.71	-11669.17	1.63	1506933.76	3447442.23	40.713745	-103.885886
	16199.00	89.52	269.74	5741.76	11759.66	-216.27	-11759.17	0.35	1506931.51	3447352.26	40.713744	-103.886210
	16288.00	89.33	268.58	5742.66	11848.65	-217.58	-11848.15	1.32	1506928.55	3447263.32	40.713740	-103.886531
	16378.00	89.22	269.50	5743.80	11938.63	-219.08	-11938.13	1.03	1506925.36	3447173.38	40.713736	-103.886856
	16467.00	89.03	269.06	5745.15	12027.61	-220.20	-12027.11	0.54	1506922.58	3447084.44	40.713733	-103.887177
	16557.00	88.88	269.21	5746.80	12117.59	-221.56	-12117.09	0.24	1506919.54	3446994.51	40.713729	-103.887502
	16647.00	88.88	269.35	5748.56	12207.57	-222.69	-12207.06	0.16	1506916.73	3446904.57	40.713725	-103.887826
	16736.00	89.01	269.10	5750.19	12296.55	-223.89	-12296.04	0.32	1506913.87	3446815.63	40.713722	-103.888147
	16826.00	88.96	269.03	5751.79	12386.53	-225.36	-12386.01	0.10	1506910.72	3446725.70	40.713718	-103.888472
	16915.00	89.15	270.46	5753.26	12475.51	-225.76	-12475.00	1.62	1506908.66	3446636.74	40.713717	-103.888793
	17004.00	89.16	269.12	5754.57	12564.50	-226.09	-12563.99	1.51	1506906.67	3446547.77	40.713716	-103.889114
	17094.00	89.26	269.61	5755.81	12654.49	-227.08	-12653.97	0.56	1506903.99	3446457.82	40.713713	-103.889438
	17184.00	88.87	269.47	5757.28	12744.47	-227.81	-12743.96	0.46	1506901.59	3446367.87	40.713711	-103.889763
	17273.00	89.28	269.79	5758.72	12833.46	-228.38	-12832.94	0.58	1506899.35	3446278.91	40.713709	-103.890084
	17363.00	89.32	269.33	5759.81	12923.45	-229.07	-12922.93	0.51	1506896.98	3446188.95	40.713707	-103.890408
	17453.00	89.11	268.93	5761.05	13013.44	-230.44	-13012.91	0.50	1506893.94	3446099.01	40.713703	-103.890733
	17542.00	89.09	269.20	5762.45	13102.42	-231.89	-13101.89	0.30	1506890.82	3446010.08	40.713699	-103.891054
	17632.00	89.10	269.59	5763.87	13192.40	-232.84	-13191.87	0.43	1506888.19	3445920.13	40.713696	-103.891378
	17721.00	89.13	269.69	5765.24	13281.39	-233.40	-13280.86	0.12	1506885.97	3445831.17	40.713695	-103.891699
	17811.00	89.40	269.63	5766.40	13371.38	-233.93	-13370.85	0.31	1506883.76	3445741.20	40.713693	-103.892024
	17900.00	89.09	270.15	5767.57	13460.38	-234.10	-13459.84	0.68	1506881.92	3445652.23	40.713692	-103.892345
	17990.00	88.98	270.20	5769.08	13550.36	-233.83	-13459.83	0.13	1506880.52	3445562.26	40.713693	-103.892670
	18079.00	89.18	270.17	5770.51	13639.35	-233.54	-13638.82	0.23	1506879.14	3445473.28	40.713694	-103.892991
	18169.00	89.47	269.17	5771.57	13729.34	-234.06	-13728.81	1.16	1506876.94	3445383.32	40.713692	-103.893315
	18259.00	89.32	269.42	5772.52	13819.33	-235.17	-13818.80	0.32	1506874.16	3445293.37	40.713689	-103.893640
	18348.00	89.14	269.87	5773.72	13908.32	-235.72	-13907.79	0.54	1506871.94	3445204.40	40.713687	-103.893961
	18438.00	89.03	269.49	5775.16	13998.31	-236.22	-13997.78	0.44	1506869.76	3445114.44	40.713686	-103.894285
	18527.00	89.12	269.23	5776.59	14087.30	-237.22	-14086.76	0.31	1506867.10	3445025.49	40.713683	-103.894606
	18617.00	89.43	269.15	5777.73	14177.28	-238.49	-14176.74	0.36	1506864.15	3444935.55	40.713679	-103.894931
	18706.00	88.94	269.70	5779.00	14266.27	-239.38	-14265.73	0.83	1506861.60	3444846.60	40.713677	-103.895252
	18796.00	88.90	269.49	5780.70	14356.25	-240.02	-14355.71	0.24	1506859.28	3444756.65	40.713675	-103.895577
	18885.00	89.02	269.37	5782.31	14445.24	-240.90	-14444.69	0.19	1506856.73	3444667.70	40.713672	-103.895898
	18975.00	89.21	268.67	5783.70	14535.21	-242.44	-14534.67	0.81	1506853.52	3444577.77	40.713668	-103.896222
Cross Setback Toe (354' FNL, 300' FWL)	18984.20	89.17	268.83	5783.83	14544.41	-242.64	-14543.86	1.79	1506853.14	3444568.58	40.713667	-103.896255
	19020.00	89.00	269.45	5784.40	14580.20	-243.18	-14579.65	1.79	1506851.94	3444532.80	40.713666	-103.896384
Last SLB MWD Survey Projection to TD (354' FNL, 193' FWL)	19056.00	89.01	269.59	5785.03	14616.20	-243.48	-14615.65	0.39	1506850.96	3444496.82	40.713665	-103.896514
	19091.00	89.01	269.59	5785.63	14651.19	-243.73	-14650.64	0.00	1506850.06	3444461.84	40.713664	-103.896640

Survey Type: Def Survey

Survey Error Model: ISCWSA Rev 3 \*\*\* 3-D 95.000% Confidence 2.7955 sigma  
 Survey Program:

Description	Part	MD From (ft)	MD To (ft)	EOU Freq (ft)	Hole Size	Casing Diameter (in)	Survey Tool Type	Borehole / Survey
	1	0.000	6.000	1/98.425	13.500	9.625	A001Mb_MWD-Depth Only	Speed Goat Fed 3432-01H / Speed Goat Fed 3432-01H
	1	6.000	21.000	Act Stns	13.500	9.625	A001Mb_MWD-Depth Only	Speed Goat Fed 3432-01H / Speed Goat Fed 3432-01H
	1	21.000	1544.000	Act Stns	13.500	9.625	A001Mb_MWD	Speed Goat Fed 3432-01H / Speed Goat Fed 3432-01H
	1	1544.000	19091.000	Act Stns	8.500	5.500	A010Mb_MWD+IFR1+SAG+MS	Speed Goat Fed 3432-01H / Speed Goat Fed 3432-01H / IFR1+MS+SAG 0' to 19091'

...Speed Goat Fed 3432-01H/Speed Goat Fed 3432-01H IFR1+MS+SAG 0' to 19091' Definitive