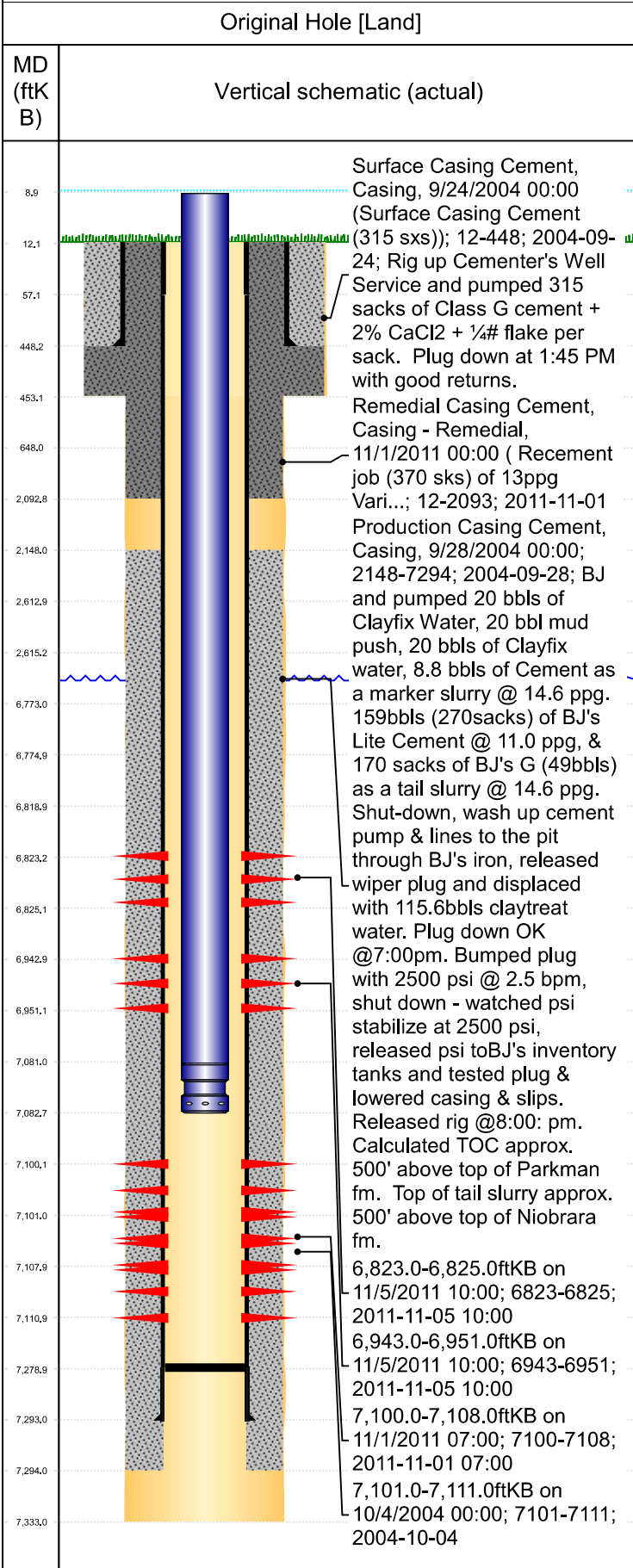




P&A Wellbore For State

Well Name: Lawley 33-4



| Well Header | | | | | | | | | |
|--|-------------|---------------------------------|--------------------|------------------------|----------------|-----------------------|--------------------------|-----------------------------|--|
| Surface UWI 0512322359 | | Business Unit Rockies | | Gov Auth Dist Evans | | Prod Tree Loc Land | | | |
| Orig. KB to Gnd (ft) 12.00 | | Original Spud Date 9/24/2004 | | Abandon Date | | Well Sub-Status PR | | High... N | |
| Comment | | | | | | | | | |
| Surface Location (Congressional) | | | | | | | | | |
| Qtr 3 NW | Qtr 4 SE | Section | Twncshp | Twncsh... | Range | Rng E/... | Latitude (°) 40.51283 | Longitude (°) -104.55203 | |
| Wellbore Sections | | | | | | | | | |
| Section Des | | Hole Size (in) | | Top Depth (ftKB) | | Btm Depth (ftKB) | | | |
| Surface | | 12 1/4 | | 12.0 | | 453.0 | | | |
| Production | | 7 7/8 | | 453.0 | | 7,333.0 | | | |
| Casing Strings | | | | | | | | | |
| Csg Des | | Run Date | | OD (in) | Wt/Len (lb/ft) | Grade | Top Depth (MD) (ftKB) | Set Depth (MD) (ftKB) | |
| Surface | | 9/24/2004 | | 8 5/8 | 24.00 | J-55 | 12 | 448 | |
| Production | | 9/28/2004 | | 4 1/2 | 10.50 | M-65 | 12 | 7293 | |
| Cement | | | | | | | | | |
| Des | | | | Start Date | | Top (ftKB) | | Btm (ftKB) | |
| Surface Casing Cement (315 sxs) | | | | 9/24/2004 | | 12.0 | | 448.0 | |
| Recement job (370 sks) of 13ppg Varicement | | | | 9/28/2004 | | 2,148.0 | | 7,294.0 | |
| Recement job (370 sks) of 13ppg Varicement | | | | 11/1/2011 | | 12.0 | | 2,093.0 | |
| Zone Statuses | | | | | | | | | |
| Zone Name | Status Date | Status | Fluid Type | Job | | | Prod Method | | |
| | | | | | | | | | |
| Perforation Data | | | | | | | | | |
| Linked Zone | | Explosive Type | Entered Shot Total | Top (ftKB) | Btm (ftKB) | Date | | | |
| Niobrara_A, Original Hole | | | | 6,823.0 | 6,825.0 | 11/5/2011 | | | |
| Niobrara_B, Original Hole | | | | 6,943.0 | 6,951.0 | 11/5/2011 | | | |
| Codell, Original Hole | | | | 7,100.0 | 7,108.0 | 11/1/2011 | | | |
| Codell, Original Hole | | | | 7,101.0 | 7,111.0 | 10/4/2004 | | | |
| Stim/Frac Stage | | | | | | | | | |
| Zone | | Start Date | | Top (ftKB) | | Btm (ftKB) | | | |
| Codell, Original Hole | | 10/4/2004 | | | | | | | |
| Codell, Original Hole | | 11/5/2011 | | | | | | | |
| Niobrara, Original Hole | | 11/5/2011 | | | | | | | |
| Other In Hole | | | | | | | | | |
| Run Date | Des | | | Make | OD (in) | Top (ftKB) | Btm (ftKB) | | |
| | | | | | | | | | |
| Logs | | | | | | | | | |
| Date | | Type | | | | Depth Top (MD) (ftKB) | Btm (ftKB) | | |
| | | | | | | | | | |
| Wellbore Plug Back Total Depths | | | | | | | | | |
| Date | Type | Com | | | | | | PBTD (ftKB) | |
| 9/28/2004 | | | | | | | | 7,279 | |