

NOBLE ENERGY, INC

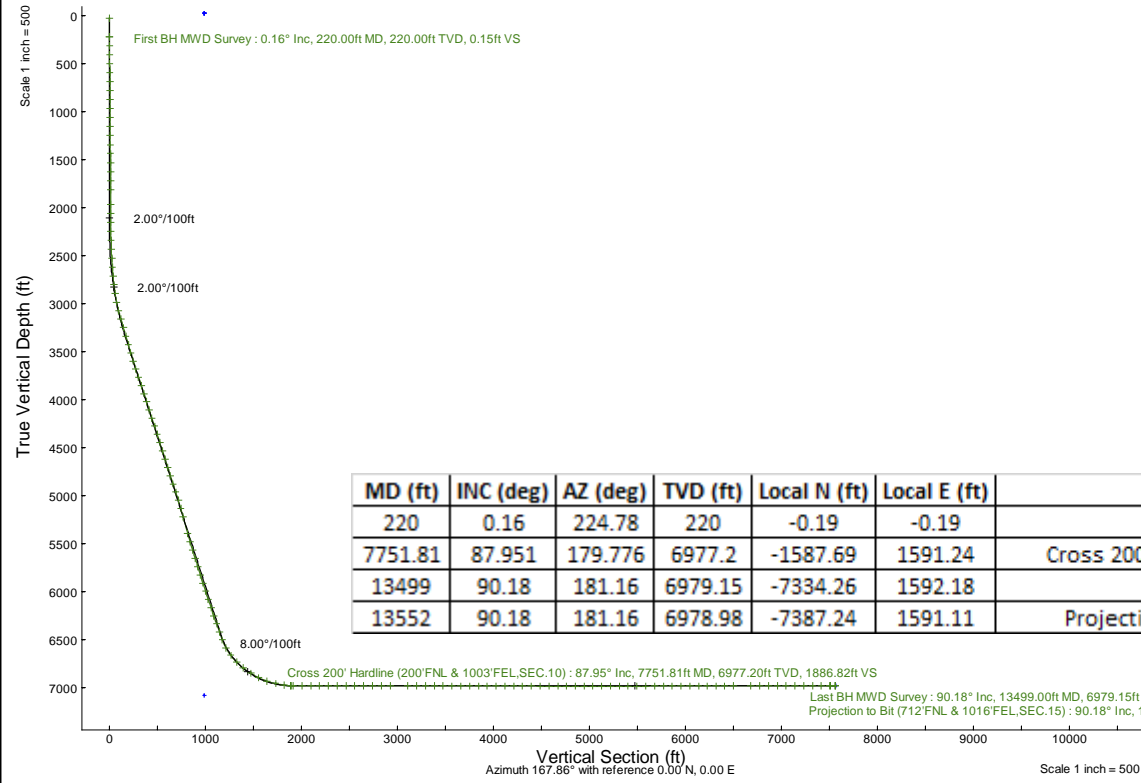
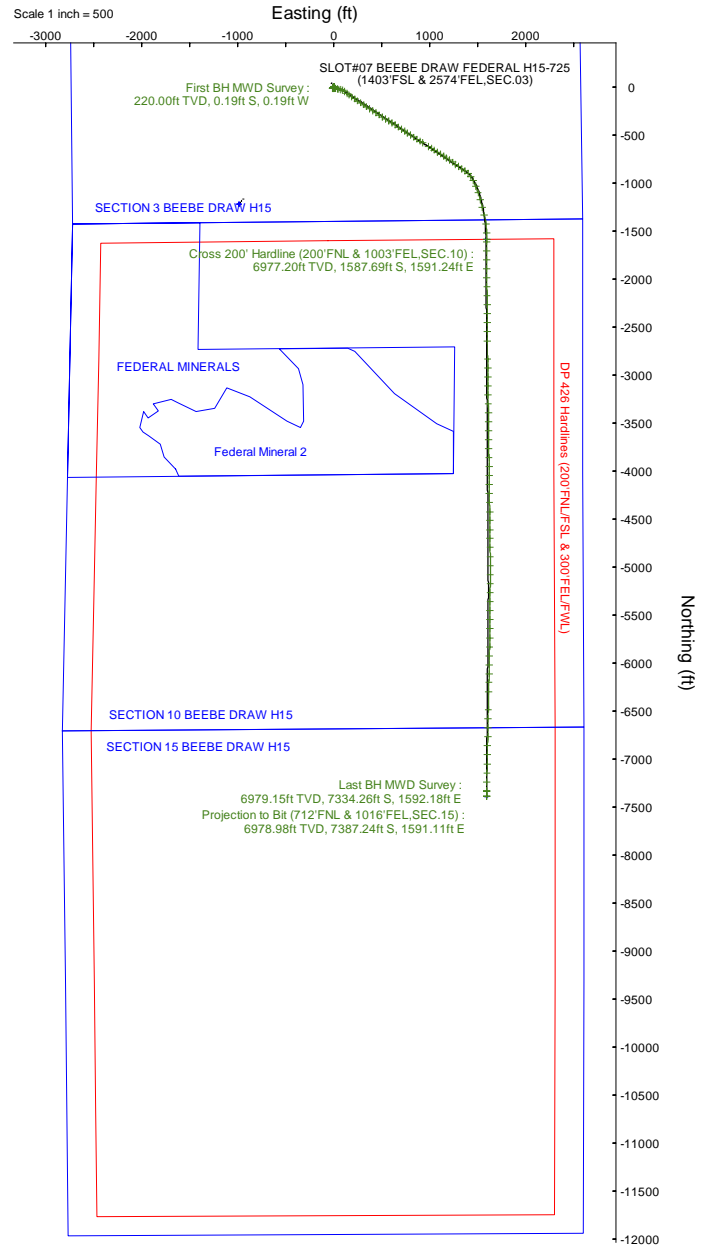
Location: COLORADO Slot: SLOT#07 BEEBE DRAW FEDERAL H15-725 (1403'FSL & 2574'FEL,SEC.03)
 Field: WELD COUNTY (NOBLE NAD 83 GRID) Well: BEEBE DRAW FEDERAL H15-725
 Facility: SEC.03-T03N-R65W Wellbore: BEEBE DRAW FEDERAL H15-725 PWB

Plot reference wellpath is BEEBE DRAW FEDERAL H15-725 (REV-B.0) PWP
 True vertical depths are referenced to (4783'GL+25'KB @4808'RKB) (RKB)
 Reference wellpath measured depths are referenced to (4783'GL+25'KB @4808'RKB) (RKB)
 (4783'GL+25'KB @4808'RKB) (RKB) to Mean Sea Level: 4808 feet
 Mean Sea Level to Ground level (At Slot: SLOT#07 BEEBE DRAW FEDERAL H15-725 (1403'FSL & 2574'FEL,SEC.03)): 0 feet
 Offset wellpath MDs are referenced to each path's default MD datum

Grid System: NAD83 / Lambert Colorado SP, Northern Zone (501), US feet
 North Reference: Grid north
 Scale: True distance
 Coordinates are in feet referenced to Slot
 Depths are in feet
 Created by: martinsam01 on 2024-07-23; Database: WA, Denver

Location Information

Facility Name		Grid East (US ft)	Grid North (US ft)	Latitude	Longitude	
SEC.03-T03N-R65W		300000.000	4454105.150	48°46'34.3150"N	106°30'0.0000"W	
Slot	Local N (ft)	Local E (ft)	Grid East (US ft)	Grid North (US ft)	Latitude	Longitude
SLOT#07 BEEBE DRAW FEDERAL H15-725 (1403'FSL & 2574'FEL,SEC.03)	-3082891.90	234788.50	3237515.798	1335402.408	40°15'3.4200"N	104°38'56.6800"W
(4783'GL+25'KB @4808'RKB) (RKB) to Ground level (At Slot: SLOT#07 BEEBE DRAW FEDERAL H15-725 (1403'FSL & 2574'FEL,SEC.03))					4808ft	
Mean Sea Level to Ground level (At Slot: SLOT#07 BEEBE DRAW FEDERAL H15-725 (1403'FSL & 2574'FEL,SEC.03))					0ft	
(4783'GL+25'KB @4808'RKB) (RKB) to Mean Sea Level					4808ft	



MD (ft)	INC (deg)	AZ (deg)	TVD (ft)	Local N (ft)	Local E (ft)	Comment
220	0.16	224.78	220	-0.19	-0.19	First BH MWD Survey
7751.81	87.951	179.776	6977.2	-1587.69	1591.24	Cross 200' Hardline (200'FNL & 1003'FEL,SEC.10)
13499	90.18	181.16	6979.15	-7334.26	1592.18	Last BH MWD Survey
13552	90.18	181.16	6978.98	-7387.24	1591.11	Projection to Bit (712'FNL & 1016'FEL,SEC.15)

REFERENCE WELLPATH IDENTIFICATION

Operator	NOBLE ENERGY, INC	Well	BEEBE DRAW FEDERAL H15-725
Field	WELD COUNTY (NOBLE NAD 83 GRID)	API/Legal	05-123-49230
Facility	SEC.03-T03N-R65W	Wellbore	BEEBE DRAW FEDERAL H15-725 AWB
Slot	SLOT#07 BEEBE DRAW FEDERAL H15-725 (1403'FSL & 2574'FEL,SEC.03)		

REPORT SETUP INFORMATION

Projection System	NAD83 / Lambert Colorado SP, Northern Zone (501), US feet	Software System	WellArchitect® 6.0
North Reference	Grid	User	Martsam01
Scale	0.999957	Report Generated	7/23/2024 at 11:55:58 AM
Convergence at slot	0.55° East	Database	WA_Denver

WELLPATH LOCATION

	Local coordinates		Grid coordinates		Geographic coordinates	
	North[ft]	East[ft]	Easting[US ft]	Northing[US ft]	Latitude	Longitude
Slot Location	-3082891.90	234788.50	3237515.80	1335402.41	40.2509500°	-104.6490500°
Facility Reference Pt			3000000.00	4454105.15	48.7761986°	-105.5000000°
Field Reference Pt			3000000.00	4454105.15	48.7761986°	-105.5000000°

WELLPATH DATUM

Calculation method	Minimum curvature	(4783'GL+25'KB@4808'RKB) (RKB) to Facility Vertical Datum	4808.00ft
Horizontal Reference Pt	Slot	(4783'GL+25'KB@4808'RKB) (RKB) to Mean Sea Level	4808.00ft
Vertical Reference Pt	(4783'GL+25'KB@4808'RKB) (RKB)	(4783'GL+25'KB@4808'RKB) (RKB) to Ground Level at Slot (SLOT#07 BEEBE DRAW FEDERAL H15-725 (1403'FSL & 2574'FEL,SEC.03))	4808.00ft
MD Reference Pt	(4783'GL+25'KB@4808'RKB) (RKB)	Section Origin	N 0.00, E 0.00 ft
Field Vertical Reference	Mean Sea Level	Section Azimuth	167.86°

REFERENCE WELLPATH IDENTIFICATION			
Operator	NOBLE ENERGY, INC	Well	BEEBE DRAW FEDERAL H15-725
Field	WELD COUNTY (NOBLE NAD 83 GRID)	API/Legal	05-123-49230
Facility	SEC.03-T03N-R65W	Wellbore	BEEBE DRAW FEDERAL H15-725 AWB
Slot	SLOT#07 BEEBE DRAW FEDERAL H15-725 (1403'FSL & 2574'FEL,SEC.03)		

WELLPATH DATA (144 stations) † = interpolated, ‡ = extrapolated station

MD [ft]	Inclination [°]	Azimuth [°]	TVD [ft]	Vert Sect [ft]	North [ft]	East [ft]	Latitude	Longitude	DLS [°/100ft]	Comments
0.00†	0.000	224.780	0.00	0.00	0.00	0.00	40.2509500	-104.6490500	0.00	
25.00	0.000	224.780	25.00	0.00	0.00	0.00	40.2509500	-104.6490500	0.00	
220.00	0.160	224.780	220.00	0.15	-0.19	-0.19	40.2509495	-104.6490507	0.08	First BH MWD Survey
312.00	0.330	216.350	312.00	0.39	-0.50	-0.44	40.2509486	-104.6490516	0.19	
405.00	0.270	198.180	405.00	0.76	-0.92	-0.67	40.2509475	-104.6490524	0.12	
498.00	0.260	175.470	498.00	1.16	-1.34	-0.72	40.2509463	-104.6490526	0.11	
592.00	0.440	168.070	591.99	1.73	-1.91	-0.63	40.2509448	-104.6490523	0.20	
686.00	0.580	159.630	685.99	2.56	-2.71	-0.39	40.2509426	-104.6490515	0.17	
779.00	0.370	179.900	778.99	3.32	-3.45	-0.22	40.2509405	-104.6490509	0.29	
873.00	0.260	179.330	872.99	3.83	-3.96	-0.22	40.2509391	-104.6490509	0.12	
967.00	0.380	176.550	966.99	4.35	-4.49	-0.20	40.2509377	-104.6490509	0.13	
1060.00	0.410	200.870	1059.98	4.93	-5.11	-0.30	40.2509360	-104.6490512	0.18	
1153.00	0.600	203.820	1152.98	5.60	-5.86	-0.61	40.2509339	-104.6490524	0.21	
1247.00	0.610	211.010	1246.97	6.37	-6.74	-1.07	40.2509315	-104.6490541	0.08	
1342.00	0.690	217.430	1341.97	7.11	-7.63	-1.68	40.2509291	-104.6490563	0.11	
1435.00	1.020	223.720	1434.96	7.93	-8.67	-2.59	40.2509263	-104.6490596	0.37	
1529.00	1.270	221.740	1528.94	9.02	-10.05	-3.86	40.2509225	-104.6490642	0.27	
1623.00	1.580	214.560	1622.91	10.52	-11.90	-5.29	40.2509175	-104.6490694	0.38	
1717.00	1.430	251.660	1716.88	11.54	-13.34	-7.14	40.2509136	-104.6490760	1.03	
1811.00	1.210	266.020	1810.85	11.52	-13.77	-9.24	40.2509124	-104.6490836	0.42	
1963.00	1.460	211.510	1962.82	12.70	-15.54	-11.86	40.2509077	-104.6490930	0.82	
2056.00	2.690	69.840	2055.79	13.25	-15.79	-10.43	40.2509069	-104.6490879	4.24	
2150.00	2.570	80.770	2149.69	13.05	-14.70	-6.27	40.2509098	-104.6490730	0.55	
2244.00	2.540	83.690	2243.60	13.37	-14.13	-2.12	40.2509113	-104.6490581	0.14	
2338.00	3.520	100.300	2337.47	14.68	-14.42	2.79	40.2509104	-104.6490405	1.39	
2433.00	6.610	100.860	2432.08	17.93	-15.97	11.03	40.2509059	-104.6490110	3.25	
2526.00	8.070	101.280	2524.32	22.62	-18.25	22.69	40.2508993	-104.6489694	1.57	
2620.00	9.690	101.760	2617.19	28.44	-21.16	36.90	40.2508910	-104.6489185	1.73	
2714.00	12.690	104.220	2709.39	36.23	-25.31	54.66	40.2508791	-104.6488551	3.23	
2808.00	12.360	101.580	2801.16	44.87	-29.86	74.52	40.2508661	-104.6487841	0.70	
2901.00	14.170	117.780	2891.70	56.18	-37.17	94.35	40.2508455	-104.6487133	4.43	
2995.00	16.340	126.280	2982.40	73.46	-50.36	115.20	40.2508087	-104.6486391	3.31	
3088.00	17.780	126.280	3071.30	93.87	-66.50	137.19	40.2507638	-104.6485608	1.55	
3182.00	20.810	126.540	3160.01	117.15	-84.94	162.18	40.2507126	-104.6484719	3.22	
3276.00	20.990	126.410	3247.83	142.31	-104.88	189.15	40.2506571	-104.6483760	0.20	
3371.00	22.140	125.700	3336.18	168.33	-125.42	217.38	40.2506000	-104.6482756	1.24	
3466.00	23.890	122.920	3423.61	195.22	-146.32	248.07	40.2505418	-104.6481664	2.17	
3559.00	22.530	122.220	3509.08	221.01	-166.06	278.95	40.2504868	-104.6480564	1.49	
3653.00	23.100	122.820	3595.73	246.63	-185.66	309.68	40.2504322	-104.6479470	0.65	
3746.00	24.720	122.770	3680.75	273.25	-206.07	341.37	40.2503754	-104.6478342	1.74	
3840.00	24.850	123.230	3766.09	301.18	-227.53	374.42	40.2503156	-104.6477166	0.25	
3933.00	25.340	122.510	3850.31	329.08	-248.94	407.55	40.2502560	-104.6475986	0.62	
4027.00	25.210	123.240	3935.31	357.46	-270.72	441.25	40.2501953	-104.6474786	0.36	
4121.00	24.530	122.750	4020.59	385.48	-292.25	474.41	40.2501353	-104.6473606	0.76	
4215.00	24.660	122.710	4106.06	413.08	-313.41	507.32	40.2500764	-104.6472434	0.14	

REFERENCE WELLPATH IDENTIFICATION			
Operator	NOBLE ENERGY, INC	Well	BEEBE DRAW FEDERAL H15-725
Field	WELD COUNTY (NOBLE NAD 83 GRID)	API/Legal	05-123-49230
Facility	SEC.03-T03N-R65W	Wellbore	BEEBE DRAW FEDERAL H15-725 AWB
Slot	SLOT#07 BEEBE DRAW FEDERAL H15-725 (1403'FSL & 2574'FEL,SEC.03)		

WELLPATH DATA (144 stations) † = interpolated, ‡ = extrapolated station

MD [ft]	Inclination [°]	Azimuth [°]	TVD [ft]	Vert Sect [ft]	North [ft]	East [ft]	Latitude	Longitude	DLS [°/100ft]	Comments
4308.00	24.880	122.640	4190.51	440.55	-334.44	540.12	40.2500178	-104.6471266	0.24	
4401.00	24.620	122.710	4274.97	467.99	-355.46	572.89	40.2499592	-104.6470100	0.28	
4495.00	24.000	122.660	4360.63	495.27	-376.36	605.46	40.2499010	-104.6468940	0.66	
4589.00	24.830	123.340	4446.22	522.81	-397.52	638.04	40.2498420	-104.6467780	0.93	
4683.00	24.950	123.860	4531.49	551.15	-419.42	671.00	40.2497811	-104.6466607	0.27	
4777.00	24.510	122.640	4616.87	579.14	-440.98	703.88	40.2497210	-104.6465437	0.72	
4872.00	23.180	122.710	4703.76	606.21	-461.71	736.21	40.2496633	-104.6464286	1.40	
4966.00	24.790	121.560	4789.64	632.87	-482.03	768.57	40.2496066	-104.6463134	1.78	
5060.00	24.590	124.040	4875.05	660.60	-503.29	801.57	40.2495474	-104.6461959	1.12	
5154.00	23.720	124.690	4960.82	688.50	-525.00	833.32	40.2494870	-104.6460829	0.97	
5247.00	24.790	122.100	5045.61	715.75	-546.00	865.22	40.2494285	-104.6459693	1.62	
5342.00	22.810	119.460	5132.53	741.87	-565.65	898.13	40.2493737	-104.6458521	2.37	
5436.00	21.170	122.450	5219.69	765.89	-583.72	928.32	40.2493233	-104.6457446	2.11	
5623.00	21.410	122.040	5393.93	813.38	-619.94	985.74	40.2492223	-104.6455401	0.15	
5717.00	23.730	122.730	5480.73	838.68	-639.27	1016.20	40.2491685	-104.6454317	2.48	
5810.00	23.880	122.320	5565.81	865.07	-659.46	1047.85	40.2491122	-104.6453190	0.24	
5905.00	23.850	122.040	5652.69	891.92	-679.93	1080.38	40.2490552	-104.6452032	0.12	
5998.00	23.690	121.990	5737.80	918.03	-699.80	1112.17	40.2489998	-104.6450900	0.17	
6092.00	24.080	124.220	5823.75	945.06	-720.59	1144.04	40.2489419	-104.6449766	1.05	
6185.00	24.250	124.730	5908.60	972.73	-742.14	1175.42	40.2488819	-104.6448649	0.29	
6279.00	23.630	124.590	5994.52	1000.54	-763.83	1206.80	40.2488215	-104.6447532	0.66	
6372.00	23.780	124.980	6079.67	1027.85	-785.16	1237.51	40.2487622	-104.6446440	0.23	
6465.00	24.500	125.090	6164.54	1055.74	-806.99	1268.65	40.2487014	-104.6445332	0.78	
6559.00	25.840	125.130	6249.61	1085.10	-829.99	1301.35	40.2486374	-104.6444168	1.43	
6652.00	25.910	124.940	6333.29	1114.87	-853.29	1334.58	40.2485726	-104.6442986	0.12	
6745.00	24.470	124.770	6417.44	1143.81	-875.91	1367.06	40.2485097	-104.6441830	1.55	
6838.00	25.980	130.280	6501.58	1174.03	-900.07	1398.43	40.2484425	-104.6440715	3.00	
6931.00	30.300	145.770	6583.68	1211.98	-932.69	1427.22	40.2483522	-104.6439695	9.09	
7025.00	37.700	155.130	6661.61	1262.09	-978.47	1452.70	40.2482259	-104.6438798	9.62	
7119.00	45.450	157.930	6731.88	1323.22	-1035.68	1477.41	40.2480682	-104.6437933	8.48	
7213.00	52.000	159.130	6793.86	1392.89	-1101.40	1503.22	40.2478871	-104.6437031	7.03	
7307.00	57.490	164.370	6848.12	1469.15	-1174.26	1527.12	40.2476865	-104.6436200	7.40	
7401.00	63.680	166.190	6894.27	1550.91	-1253.43	1547.88	40.2474686	-104.6435484	6.80	
7495.00	72.230	166.420	6929.52	1637.93	-1338.00	1568.48	40.2472360	-104.6434775	9.10	
7589.00	77.110	172.100	6954.38	1728.48	-1427.01	1585.31	40.2469912	-104.6434203	7.80	
7683.00	82.190	180.370	6971.29	1819.85	-1519.17	1591.32	40.2467381	-104.6434019	10.20	
7751.81†	87.951	179.776	6977.20	1886.82	-1587.69	1591.24	40.2465500	-104.6434046	8.42	Cross 200' Hardline (200'FNL & 1003'FEL,SEC.10)
7754.00†	88.134	179.757	6977.27	1888.96	-1589.88	1591.24	40.2465440	-104.6434047	8.42	Shallowest MD for Perf
7777.00	90.060	179.560	6977.64	1911.47	-1612.88	1591.38	40.2464808	-104.6434050	8.42	
7871.00	89.940	179.560	6977.64	2003.52	-1706.87	1592.10	40.2462228	-104.6434056	0.13	
7965.00	89.910	179.690	6977.76	2095.54	-1800.87	1592.72	40.2459648	-104.6434067	0.14	
8058.00	89.850	179.280	6977.95	2186.64	-1893.87	1593.55	40.2457095	-104.6434069	0.45	
8152.00	89.850	179.480	6978.20	2278.74	-1987.86	1594.57	40.2454515	-104.6434065	0.21	
8245.00	89.910	179.200	6978.40	2369.88	-2080.86	1595.64	40.2451962	-104.6434059	0.31	
8339.00	89.880	179.530	6978.57	2461.99	-2174.85	1596.68	40.2449382	-104.6434054	0.35	

REFERENCE WELLPATH IDENTIFICATION			
Operator	NOBLE ENERGY, INC	Well	BEEBE DRAW FEDERAL H15-725
Field	WELD COUNTY (NOBLE NAD 83 GRID)	API/Legal	05-123-49230
Facility	SEC.03-T03N-R65W	Wellbore	BEEBE DRAW FEDERAL H15-725 AWB
Slot	SLOT#07 BEEBE DRAW FEDERAL H15-725 (1403'FSL & 2574'FEL,SEC.03)		

WELLPATH DATA (144 stations)

MD [ft]	Inclination [°]	Azimuth [°]	TVD [ft]	Vert Sect [ft]	North [ft]	East [ft]	Latitude	Longitude	DLS ["/100ft]	Comments
8433.00	89.940	179.530	6978.72	2554.05	-2268.85	1597.46	40.2446802	-104.6434059	0.06	
8527.00	90.000	179.580	6978.76	2646.10	-2362.84	1598.19	40.2444221	-104.6434065	0.08	
8622.00	89.880	179.710	6978.86	2739.10	-2457.84	1598.77	40.2441614	-104.6434077	0.19	
8716.00	89.880	179.470	6979.06	2831.13	-2551.84	1599.45	40.2439033	-104.6434086	0.26	
8810.00	89.780	179.340	6979.34	2923.23	-2645.83	1600.42	40.2436453	-104.6434083	0.17	
8997.00	89.820	179.150	6979.99	3106.55	-2832.82	1602.89	40.2431320	-104.6434060	0.10	
9091.00	89.970	179.160	6980.17	3198.73	-2926.81	1604.27	40.2428740	-104.6434043	0.16	
9186.00	89.820	179.270	6980.34	3291.87	-3021.80	1605.58	40.2426132	-104.6434029	0.20	
9279.00	89.910	179.060	6980.56	3383.07	-3114.79	1606.93	40.2423579	-104.6434012	0.25	
9372.00	89.910	179.190	6980.70	3474.27	-3207.78	1608.35	40.2421026	-104.6433994	0.14	
9466.00	90.030	179.540	6980.75	3566.38	-3301.77	1609.39	40.2418446	-104.6433989	0.39	
9559.00	89.880	179.200	6980.83	3657.51	-3394.76	1610.42	40.2415893	-104.6433984	0.40	
9652.00	89.780	179.130	6981.10	3748.71	-3487.75	1611.77	40.2413341	-104.6433968	0.13	
9747.00	90.090	179.650	6981.21	3841.79	-3582.75	1612.78	40.2410733	-104.6433965	0.64	
9840.00	90.030	179.180	6981.11	3932.91	-3675.74	1613.73	40.2408180	-104.6433963	0.51	
9933.00	89.880	179.210	6981.19	4024.09	-3768.73	1615.04	40.2405627	-104.6433948	0.16	
10028.00	90.030	179.140	6981.26	4117.25	-3863.72	1616.41	40.2403020	-104.6433932	0.17	
10121.00	89.940	179.250	6981.28	4208.43	-3956.71	1617.71	40.2400467	-104.6433918	0.15	
10214.00	90.000	179.260	6981.33	4299.60	-4049.71	1618.92	40.2397914	-104.6433906	0.07	
10308.00	89.850	179.170	6981.46	4391.76	-4143.70	1620.21	40.2395334	-104.6433893	0.19	
10402.00	89.750	179.360	6981.78	4483.90	-4237.69	1621.42	40.2392753	-104.6433882	0.23	
10496.00	90.090	179.250	6981.92	4576.03	-4331.68	1622.56	40.2390173	-104.6433874	0.38	
10590.00	89.910	179.270	6981.92	4668.18	-4425.67	1623.77	40.2387593	-104.6433863	0.19	
10682.00	90.060	179.410	6981.94	4758.34	-4517.67	1624.83	40.2385068	-104.6433857	0.22	
10777.00	89.850	178.980	6982.01	4851.49	-4612.66	1626.16	40.2382460	-104.6433842	0.50	
10869.00	89.970	179.290	6982.16	4941.71	-4704.65	1627.55	40.2379935	-104.6433824	0.36	
10963.00	89.910	179.150	6982.26	5033.87	-4798.64	1628.83	40.2377354	-104.6433811	0.16	
11057.00	89.970	179.440	6982.36	5126.00	-4892.63	1629.99	40.2374774	-104.6433802	0.32	
11150.00	90.000	180.330	6982.38	5216.96	-4985.63	1630.18	40.2372221	-104.6433827	0.96	
11244.00	90.120	179.990	6982.28	5308.80	-5079.63	1629.91	40.2369641	-104.6433869	0.38	
11338.00	90.120	180.380	6982.09	5400.64	-5173.63	1629.61	40.2367061	-104.6433913	0.41	
11432.00	90.090	180.150	6981.91	5492.44	-5267.63	1629.17	40.2364481	-104.6433961	0.25	
11527.00	90.120	180.340	6981.74	5585.23	-5362.63	1628.77	40.2361874	-104.6434008	0.20	
11621.00	90.120	180.160	6981.54	5677.04	-5456.62	1628.36	40.2359294	-104.6434055	0.19	
11715.00	90.060	180.340	6981.39	5768.85	-5550.62	1627.95	40.2356714	-104.6434102	0.20	
11809.00	90.060	181.090	6981.30	5860.49	-5644.62	1626.78	40.2354134	-104.6434177	0.80	
11904.00	89.940	181.220	6981.30	5952.95	-5739.60	1624.86	40.2351527	-104.6434278	0.19	
11997.00	90.120	181.110	6981.25	6043.45	-5832.58	1622.97	40.2348976	-104.6434378	0.23	
12091.00	90.060	181.110	6981.10	6134.95	-5926.56	1621.15	40.2346397	-104.6434476	0.06	
12184.00	90.060	180.950	6981.00	6225.50	-6019.54	1619.48	40.2343845	-104.6434568	0.17	
12277.00	90.090	181.260	6980.88	6316.03	-6112.53	1617.68	40.2341293	-104.6434664	0.33	
12370.00	90.060	181.250	6980.76	6406.50	-6205.50	1615.65	40.2338741	-104.6434770	0.03	
12464.00	90.150	181.120	6980.59	6497.97	-6299.48	1613.70	40.2336162	-104.6434872	0.17	
12651.00	89.970	181.350	6980.39	6679.90	-6486.44	1609.67	40.2331032	-104.6435081	0.16	
12745.00	90.250	181.210	6980.21	6771.33	-6580.42	1607.57	40.2328453	-104.6435188	0.33	

REFERENCE WELLPATH IDENTIFICATION			
Operator	NOBLE ENERGY, INC	Well	BEEBE DRAW FEDERAL H15-725
Field	WELD COUNTY (NOBLE NAD 83 GRID)	API/Legal	05-123-49230
Facility	SEC.03-T03N-R65W	Wellbore	BEEBE DRAW FEDERAL H15-725 AWB
Slot	SLOT#07 BEEBE DRAW FEDERAL H15-725 (1403'FSL & 2574'FEL,SEC.03)		

WELLPATH DATA (144 stations) † = interpolated, ‡ = extrapolated station										
MD [ft]	Inclination [°]	Azimuth [°]	TVD [ft]	Vert Sect [ft]	North [ft]	East [ft]	Latitude	Longitude	DLS [°/100ft]	Comments
12840.00	90.000	181.050	6980.00	6863.79	-6675.40	1605.70	40.2325846	-104.6435288	0.31	
12934.00	89.970	181.070	6980.03	6955.31	-6769.38	1603.96	40.2323267	-104.6435383	0.04	
13028.00	90.280	181.540	6979.82	7046.73	-6863.36	1601.82	40.2320688	-104.6435492	0.60	
13123.00	90.000	181.310	6979.59	7139.08	-6958.33	1599.46	40.2318082	-104.6435610	0.38	
13217.00	90.090	181.090	6979.52	7230.55	-7052.31	1597.49	40.2315503	-104.6435713	0.25	
13311.00	90.060	181.000	6979.39	7322.07	-7146.29	1595.77	40.2312924	-104.6435807	0.10	
13406.00	90.030	181.110	6979.32	7414.56	-7241.27	1594.02	40.2310317	-104.6435902	0.12	
13499.00	90.180	181.160	6979.15	7505.08	-7334.26	1592.18	40.2307765	-104.6436000	0.17	Last BH MWD Survey
13552.00‡	90.180	181.160	6978.98	7556.65	-7387.24	1591.11	40.2306311	-104.6436057	0.00	Projection to Bit (712'FNL & 1016'FEL,SEC.15)

TARGETS								
Name	TVD [ft]	North [ft]	East [ft]	Grid East [US ft]	Grid North [US ft]	Latitude	Longitude	Shape
BEEBE DRAW H15-783 FEDERAL MINERALS	-26.00	-1222.64	-987.67	3236528.18	1334179.82	40.2476200	-104.6526300	polygon
	2D Polygon: dimensions not calculated							
Federal Mineral 2	-26.00	-1222.64	-987.67	3236528.18	1334179.82	40.2476200	-104.6526300	polygon
	2D Polygon: dimensions not calculated							
SECTION 10 BEEBE DRAW H15-783	-26.00	-1222.64	-987.67	3236528.18	1334179.82	40.2476200	-104.6526300	polygon
	2D Polygon: dimensions not calculated							
SECTION 15 BEEBE DRAW H15-783	-26.00	-1222.64	-987.67	3236528.18	1334179.82	40.2476200	-104.6526300	polygon
	2D Polygon: dimensions not calculated							
SECTION 3 BEEBE DRAW H15-783	-26.00	-1222.64	-987.67	3236528.18	1334179.82	40.2476200	-104.6526300	polygon
	2D Polygon: dimensions not calculated							
BEEBE DRAW FEDERAL H15-725 BHL Plan (717'FNL & 1017'FEL,SEC.15)	6978.00	-7392.61	1590.21	3239105.94	1328010.13	40.2306164	-104.6436091	point
BEEBE DRAW FEDERAL H15-725 LP /Plan (200'FNL & 1010'FEL,SEC.10)	6978.00	-1587.69	1584.33	3239100.06	1333814.79	40.2465502	-104.6434294	point
DP 426 Hardlines (200'FNL/FSL & 300'FEL/FWL)	7079.00	-1222.64	-987.67	3236528.18	1334179.82	40.2476200	-104.6526300	polygon
	2D Polygon: dimensions not calculated							

REFERENCE WELLPATH IDENTIFICATION			
Operator	NOBLE ENERGY, INC	Well	BEEBE DRAW FEDERAL H15-725
Field	WELD COUNTY (NOBLE NAD 83 GRID)	API/Legal	05-123-49230
Facility	SEC.03-T03N-R65W	Wellbore	BEEBE DRAW FEDERAL H15-725 AWB
Slot	SLOT#07 BEEBE DRAW FEDERAL H15-725 (1403'FSL & 2574'FEL,SEC.03)		

WELLPATH COMPOSITION - Ref Wellbore: BEEBE DRAW FEDERAL H15-725 AWB Ref Wellpath: BEEBE DRAW FEDERAL H15-725 AWP					
Start MD [ft]	End MD [ft]	Positional Uncertainty Model	Log Name/Comment	Wellbore	Survey Date
25.00	1811.00	OWSG MWD rev2 (MS+IFR1)	13.5" Surface Evo OWSG MWD rev2 (MS+IFR1) <220-1811>	BEEBE DRAW FEDERAL H15-725 AWB	6/19/2024
1811.00	13552.00	OWSG MWD rev2 (MS+IFR1)	8.5" ATC Lucida OWSG MWD rev2 (MS+IFR1) <1963'-13499>	BEEBE DRAW FEDERAL H15-725 AWB	6/25/2024

REFERENCE WELLPATH IDENTIFICATION			
Operator	NOBLE ENERGY, INC	Well	BEEBE DRAW FEDERAL H15-725
Field	WELD COUNTY (NOBLE NAD 83 GRID)	API/Legal	05-123-49230
Facility	SEC.03-T03N-R65W	Wellbore	BEEBE DRAW FEDERAL H15-725 AWB
Slot	SLOT#07 BEEBE DRAW FEDERAL H15-725 (1403'FSL & 2574'FEL,SEC.03)		

WELLPATH COMMENTS				
MD [ft]	Inclination [°]	Azimuth [°]	TVD [ft]	Comment
220.00	0.160	224.780	220.00	First BH MWD Survey
7751.81	87.951	179.776	6977.20	Cross 200' Hardline (200'FNL & 1003'FEL,SEC.10)
7754.00	88.134	179.757	6977.27	Shallowest MD for Perf
13499.00	90.180	181.160	6979.15	Last BH MWD Survey
13552.00	90.180	181.160	6978.98	Projection to Bit (712'FNL & 1016'FEL,SEC.15)