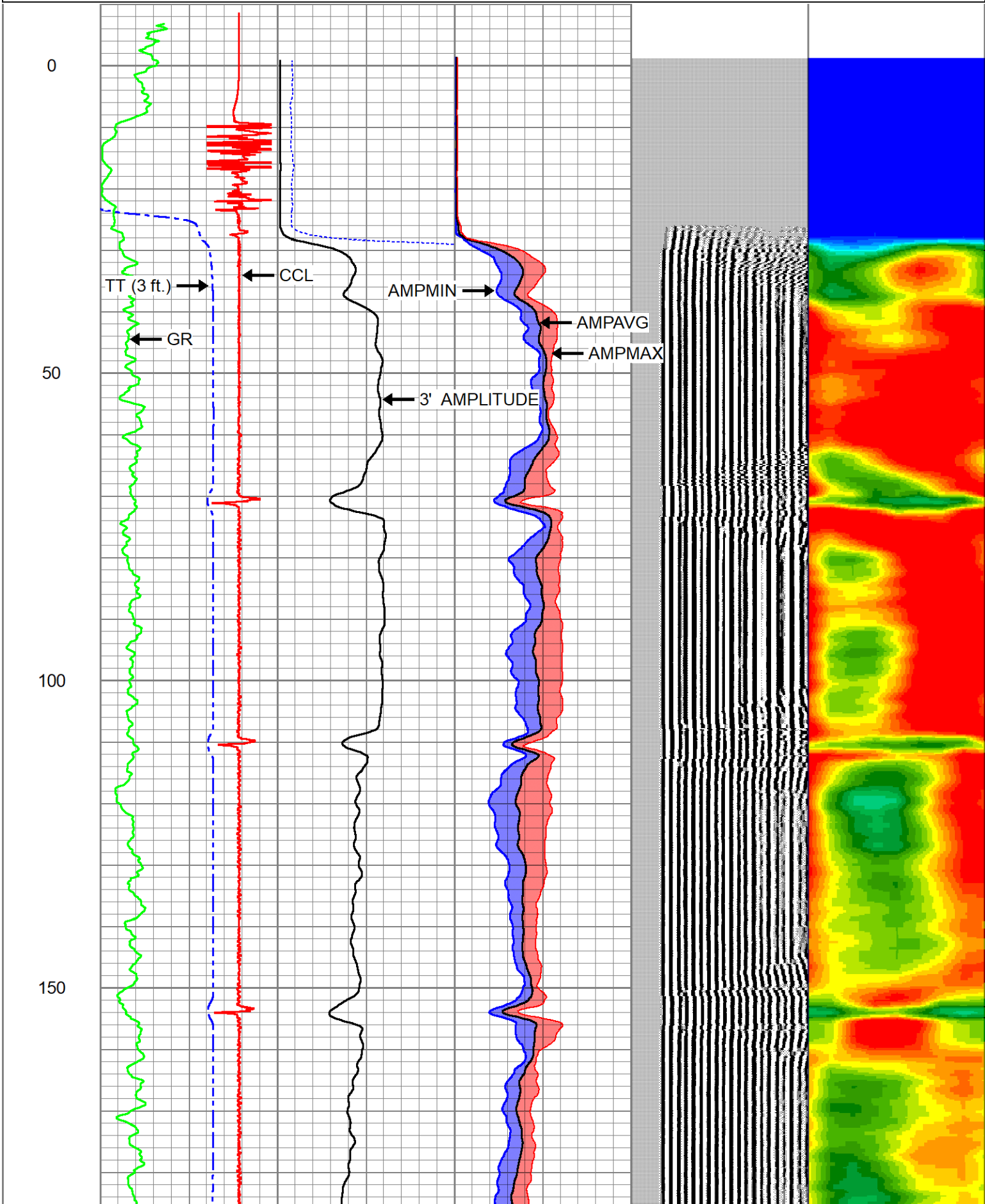


			Centralizers-Sondex PRC 2.75" Roller Centralizers Tekco 2 3/4" Adjustable Centralizer	3.00	2.75	25.00
CCL	0.00					
TCF	0.00					
GRHV	0.94					
GR	0.94					
			DSS_HSR_ELE-DSS_HSR_20_ELE (HSR20 0000) DSS 2 3/4" HSR Bond tool - Electronics Module	4.81	2.75	61.00
ROTV	4.10					
THV	4.10					
INTEMP	4.10					
PNEG	4.10					
PPOS	4.10					
WVFS8	6.09					
WVFS7	6.09					
WVFS6	6.09					
WVFS5	6.09					
WVFS4	6.09					
WVFS3	6.09		DSS_HSR_SND-DSS_HSR_20_SND (HSR20 0000) DSS 2 3/4" HSR Bond tool - Sonde Module	7.70	2.75	86.00
WVFS2	6.09					
WVFS1	6.09					
WVFCAL	6.59					
WVF3FT	6.59					
WVF5FT	7.59					
TEMP	11.67					
WVFSYNC	11.80					
			Centralizers-Sondex PRC 2.75" Roller Centralizers Tekco 2 3/4" Adjustable Centralizer	3.00	2.75	25.00

Dataset: chevron-wells ranch af08-68-1hn.db: WATTENBERG-90750/WELLS_RANCH_AF08-68-1HN/DSSHSR20-002/RBL.1
 Total length: 19.52 ft
 Total weight: 200.31 lb
 O.D.: 2.75 in

Database File chevron-wells ranch af08-68-1hn.db
 Dataset Pathname WATTENBERG-90750/WELLS_RANCH_AF08-68-1HN/DSSHSR20-002/RBL.1
 Presentation Format ranger_dss_radial
 Dataset Creation Thu May 23 08:22:50 2024
 Charted by Depth in Foot scaled 1:240

TT (3 ft.)	3' AMPLITUDE	0	AMPMIN	100	VDL (5 ft.)	1	RADIAL MAP	8
380 (usec)	(mV)	100	0	AMPAVG	200 (usec)	4		50
-20000 CCL	3' Amplitude x5	0	AMPMAX	100				
0 GR (GAPI)	(mV)	20						



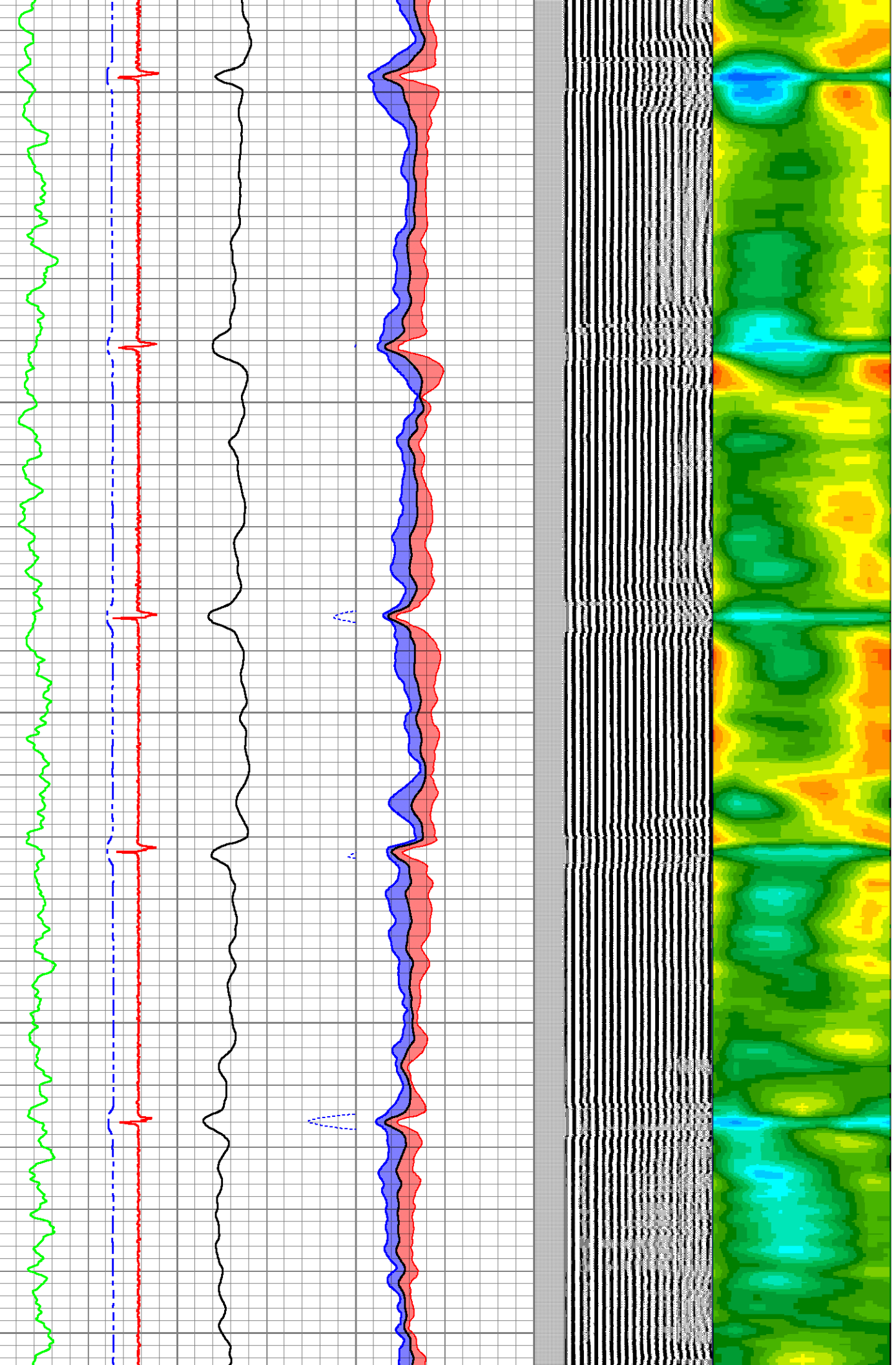
200

250

300

350

400

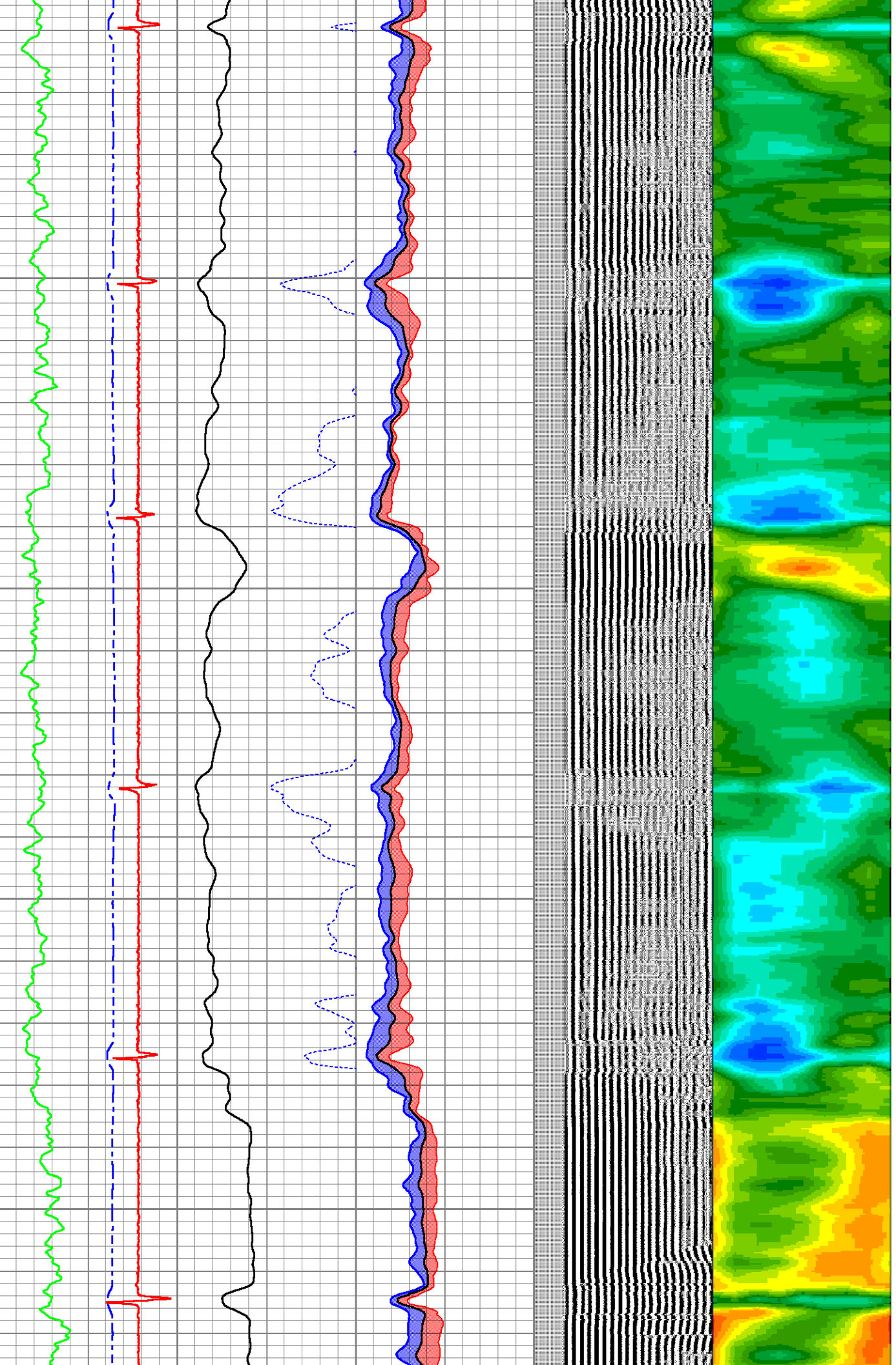


450

500

550

600

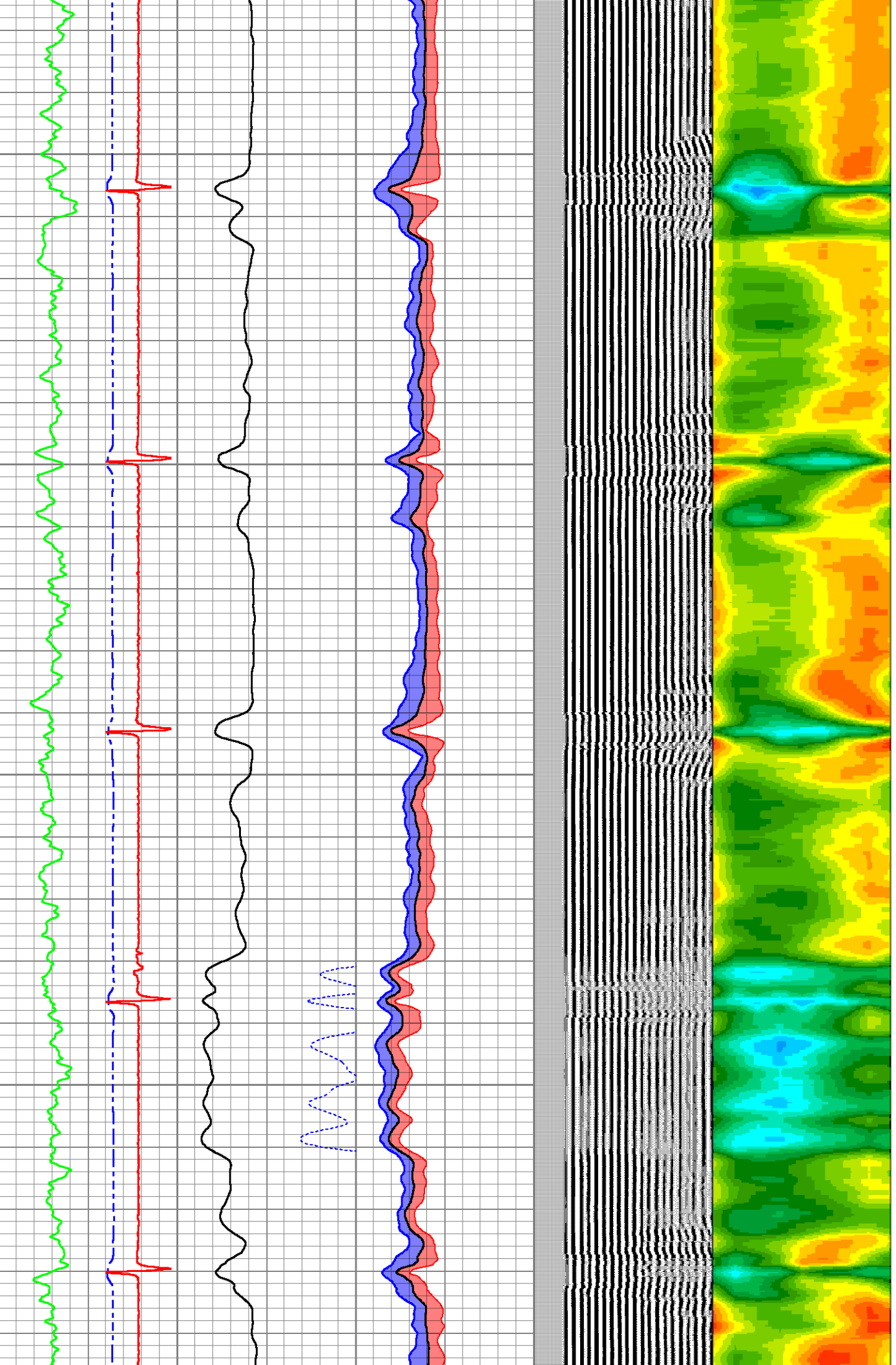


650

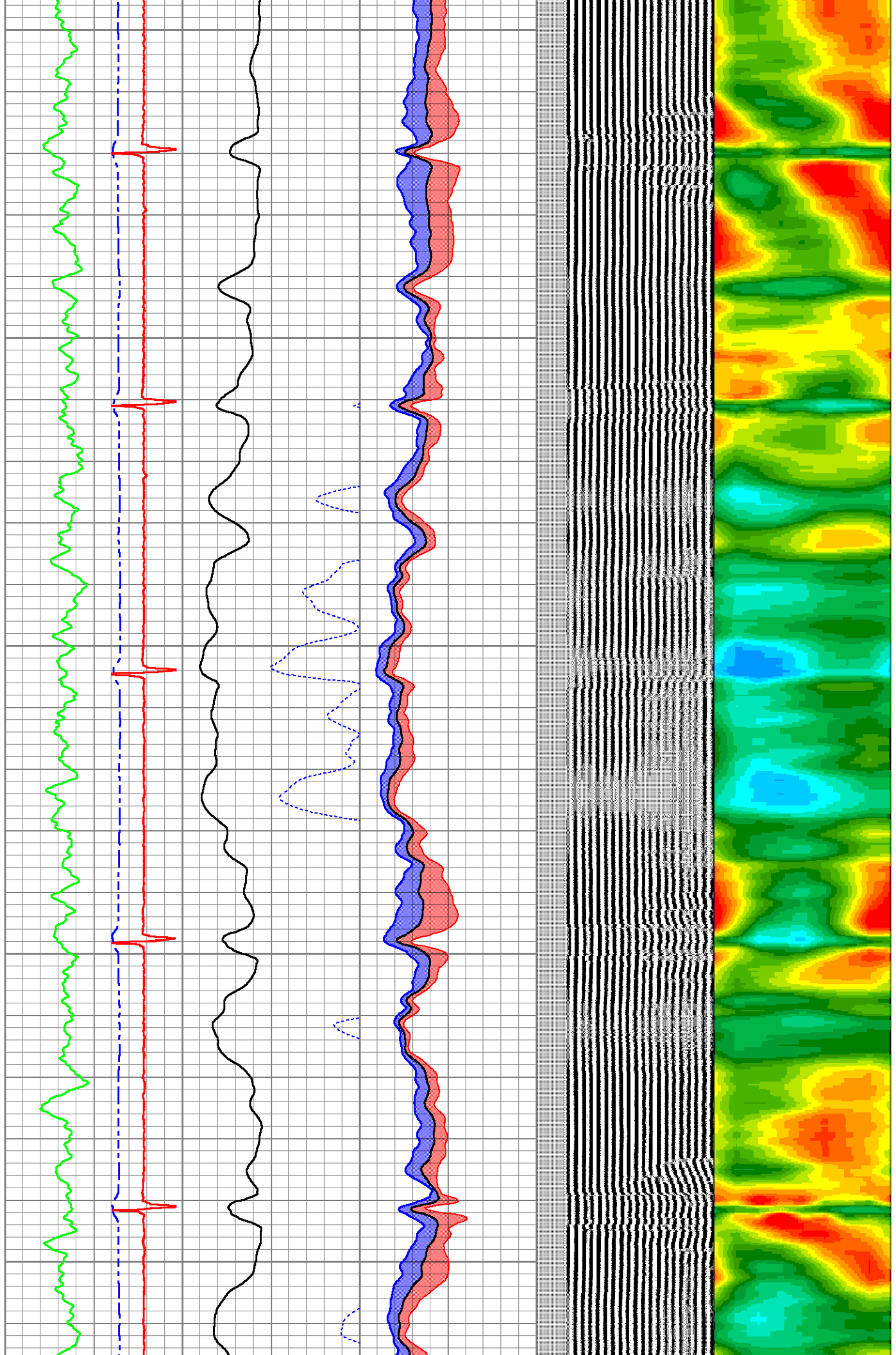
700

750

800



850
900
950
1000
1050

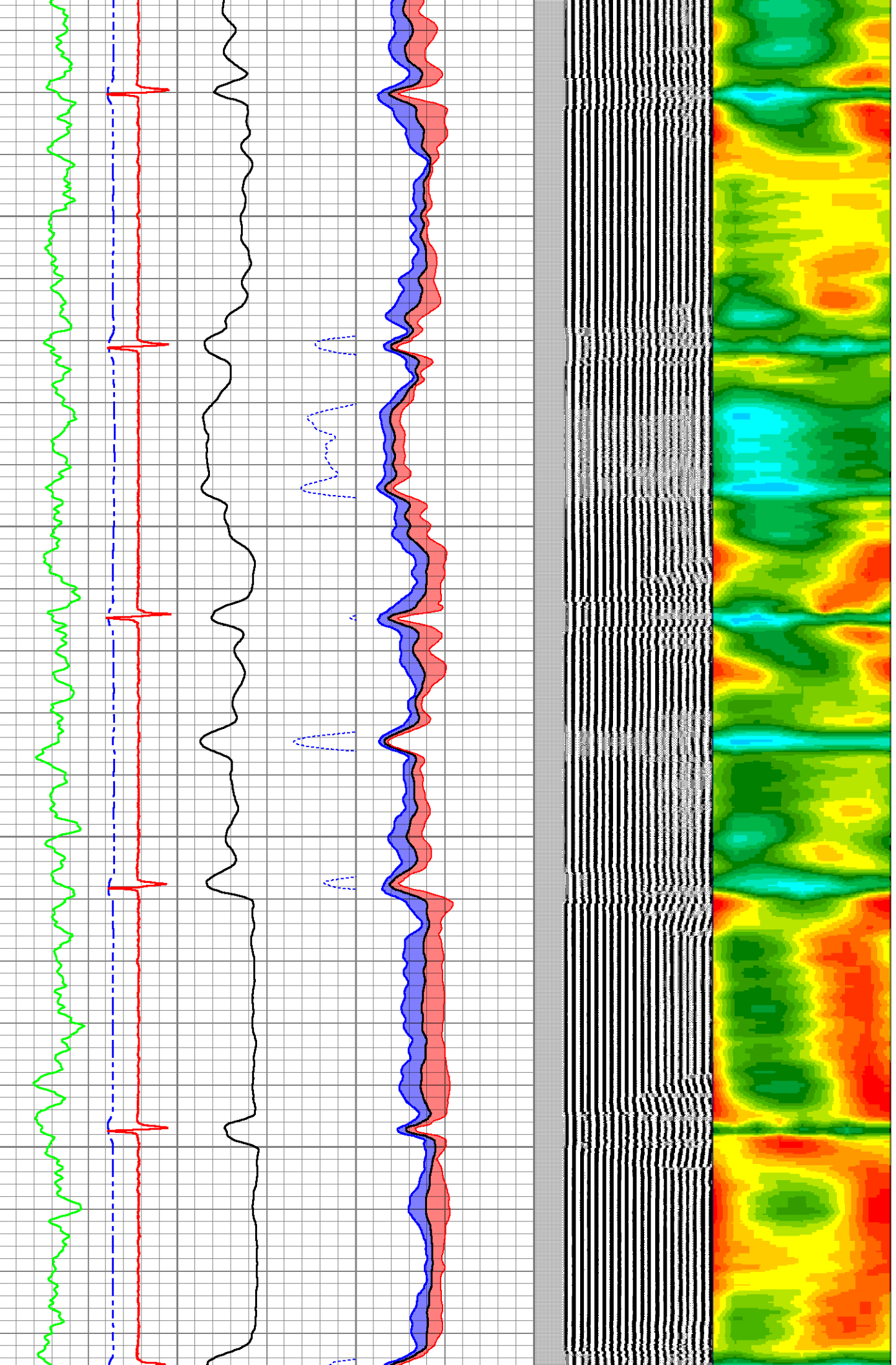


1100

1150

1200

1250



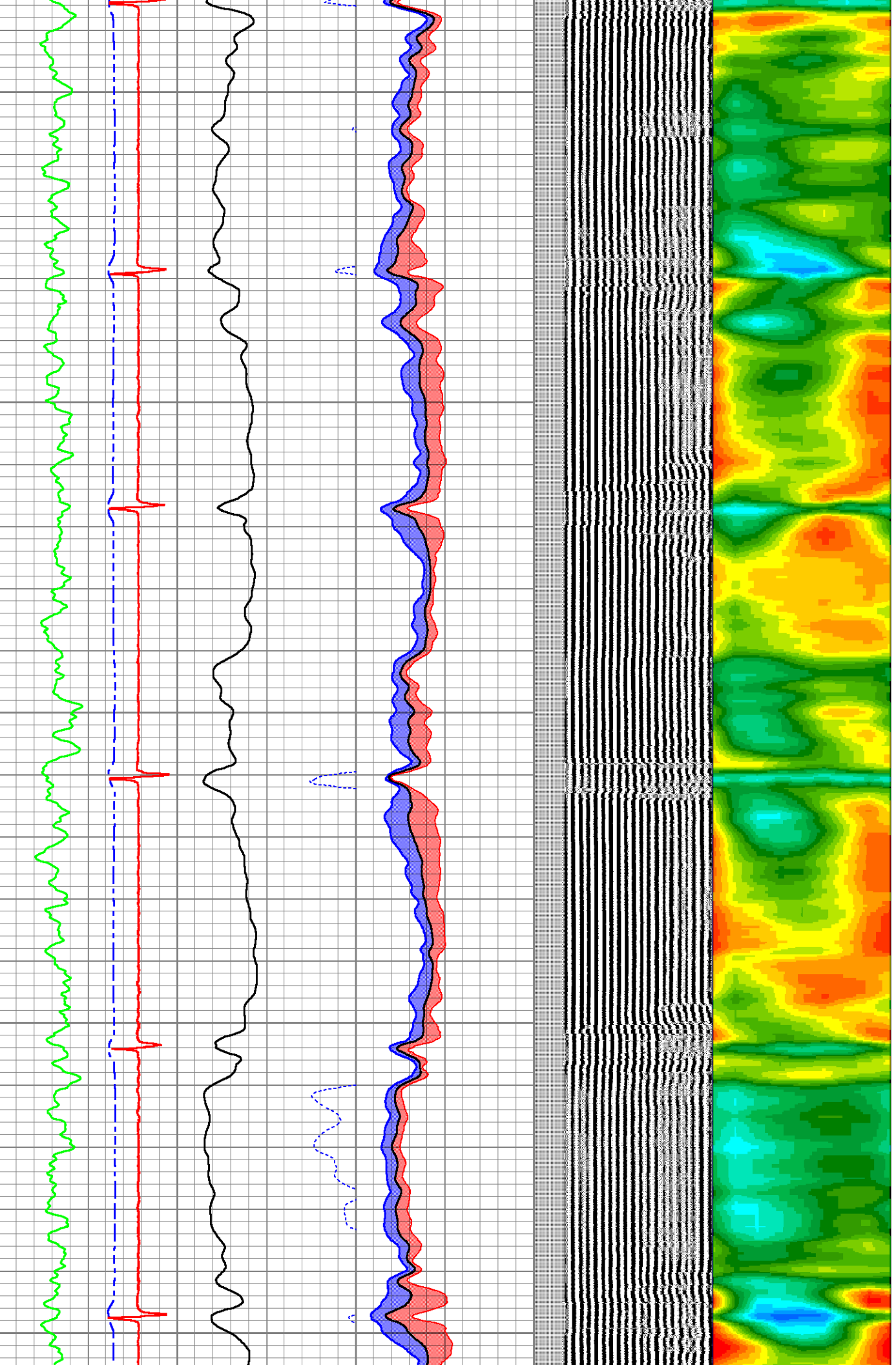
1300

1350

1400

1450

1500

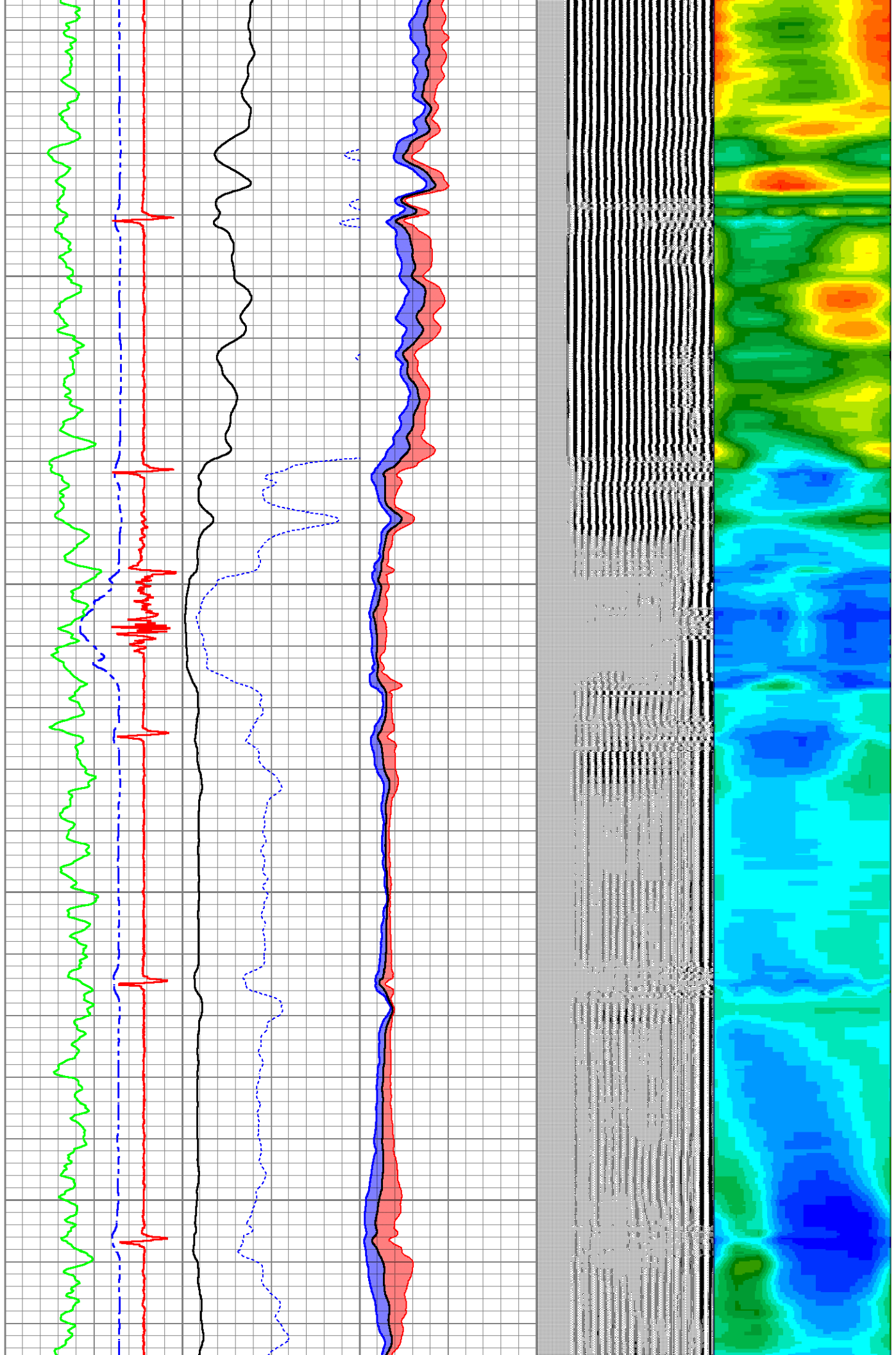


1550

1600

1650

1700

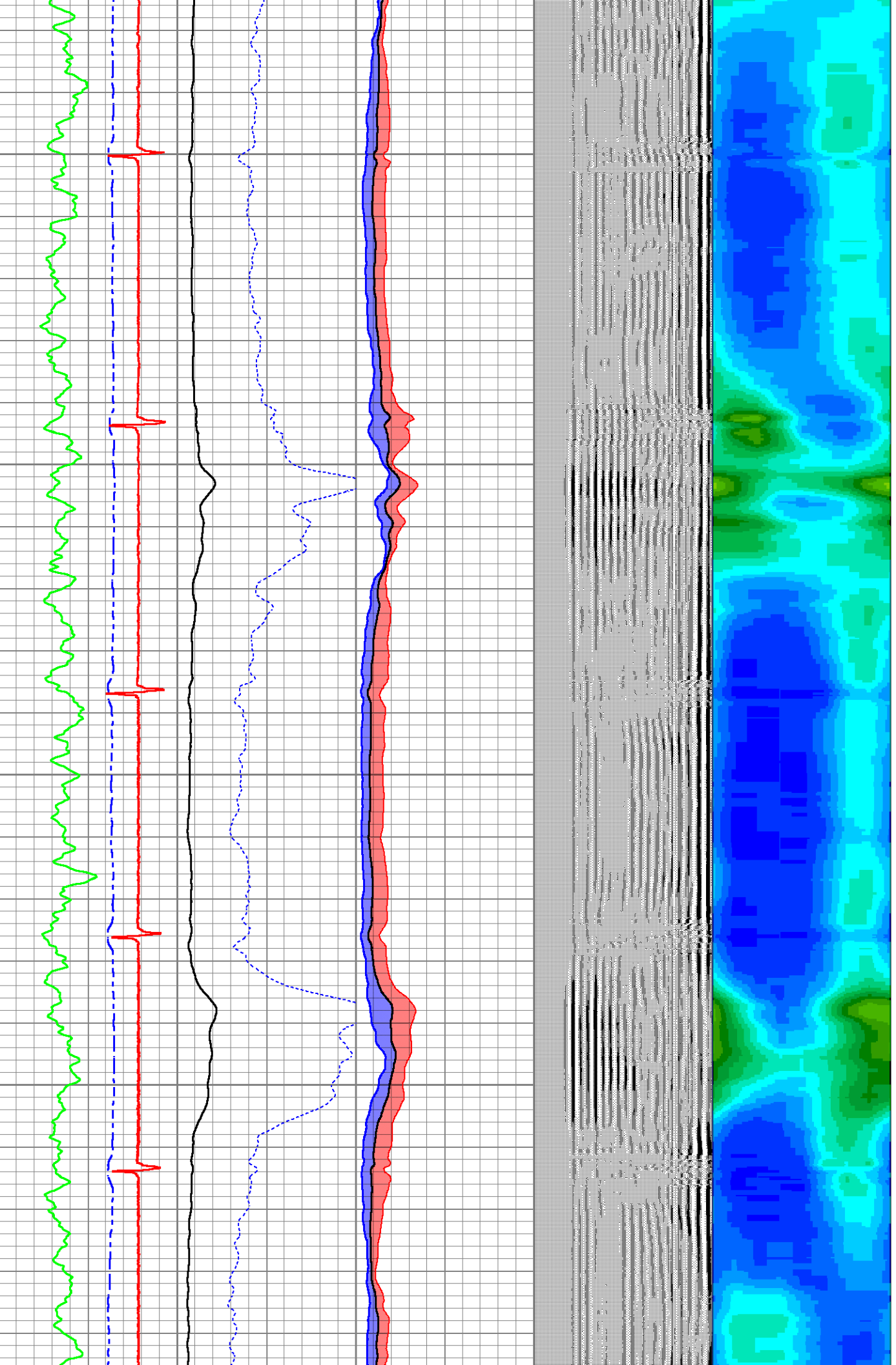


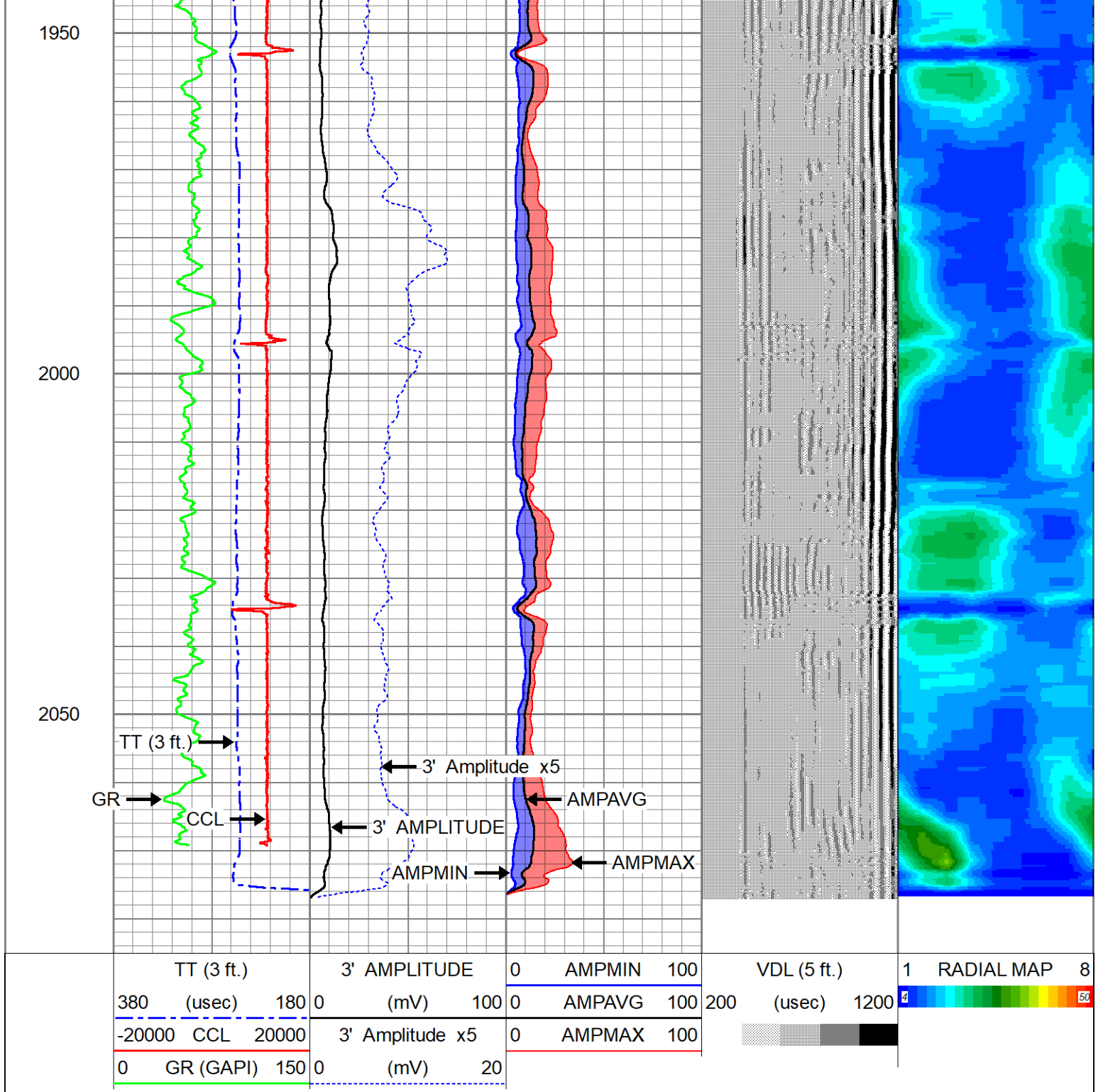
1750

1800

1850

1900





Company CHEVRON
Well WELLS RANCH AF08-68-1HN
Field WATTENBERG - 90750
County WELD
State COLORADO

Country U.S.A.