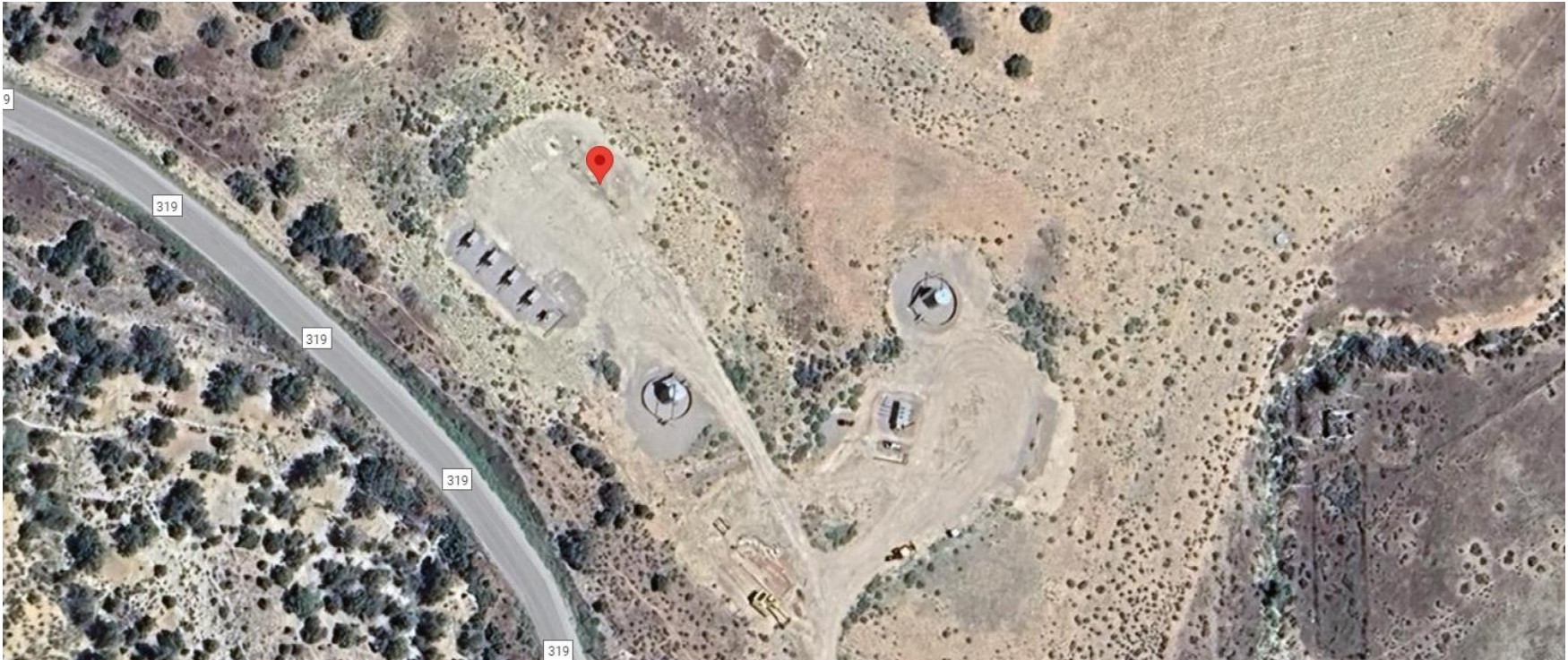


Storm Water Management and Erosion control
Location Name: CAERUS PICEANCE LLC BENZEL 35-8 (H35) Pad
Location #: 334889



Location Overview: Location is within High Priority/Density/Black Bear/NSO Habitat areas. Location is approximately 92 yards from Dry Creek. Location is in close proximity to Rule 411a Surface Water External Buffer.

Section/Township/Range: 35 6S93W

Storm water Management and Erosion control
Location Name: CAERUS PICEANCE LLC BENZEL 35-8 (H35) Pad
Location #: 334889



North West corner of location.



North East corner of location.



South West corner of location.



South East corner of location.

Storm water Management and Erosion control
Location Name: CAERUS PICEANCE LLC BENZEL 35-8 (H35) Pad
Location #: 334889



Photo # 6230 Culvert inlet shows some signs of damage & sediment buildup (on lease road near entrance to location)



Photo # 6231 Culvert inlet shows some signs of damage & sediment buildup (on lease road near entrance to location)

Storm water Management and Erosion control
Location Name: CAERUS PICEANCE LLC BENZEL 35-8 (H35) Pad
Location #: 334889



Photo # 6232 Culvert outlet shows some signs of damage (on lease road near entrance to location)