

# Wellhead Closure Checklist

## COGCC Rule 911.a.(4) Environmental Site Closure Assessment Field Form

Additional attachments (optional): <u>      </u>		Pit Closure <u>      </u>		Tank Battery Closure <u>      </u>		Flowline Closure 02/15/24	Partially Buried Vault Closure <u>      </u>
Site Name & COGCC Facility Number: UPV #23-02I4		Date: 01/26/24				Remediation Project #: 29488	
Associated Wells: 05-123-18051		Age of Site: years				Number of Photos Attached: 6	
Location: (GPS coordinates of wellhead or southeastern most wellhead for multiple)						Estimated Facility Size (acres): <u>      </u>	
General Condition of Site: (General observations regarding housekeeping, corrosion, waste management, etc.)  Good condition							
USCS Soil Type: Clayey SAND				Estimated Depth to Groundwater: ~10-15'			
Hydrocarbon Impacted Soils / Spills: (Note estimated size and if impact appears to be surficial or extends to an unknown depth)  Strong petroleum hydrocarbon odor and black staining observed							
Salt Crusted Soils or Impacted Vegetation: (Note estimated size and if impact appears to be surficial or extends to an unknown depth)  None observed							
Wellhead(s)							
Well API	05-123-18051						
Age	years						
Condition of surface around wellhead	Good - No odor/no staining						
PID Readings	WH-N: 1.1	WH-E: 1.0	WH-S: 0.8	WH-W: 1.2			
Condition of subsurface (staining present)	Strong petroleum hydrocarbon odor and black staining observed						
PID Readings	481.1	226.9	479.8	388.9	288.3		
Sample taken? Location/Sample ID#	WH-SS-01	WH-SS-02	WH-SS-03	WH-SS-04	WH-FS-01		
Photo Number(s)	See photo log						
Other observations regarding wellheads: Well casing cut/capped following assessment							
Summary							
Was impacted soil identified? No <span style="border: 1px solid black; border-radius: 50%; padding: 2px;">Yes - less than 10 cubic yards</span> Yes - more than 10 cubic yards							
Total number of samples field screened: 9				Total number of samples collected: 9			
Highest PID Reading: 481.1				Total number of samples submitted to lab for analysis: 5			
If more than 10 cubic yards of impacted soil were observed:							
Vertical extent:				Estimated spill volume:			
N/A							
Lateral extent:				Volume of soil removed:			
Is additional investigation required?							
Was groundwater encountered during the investigation? <span style="border: 1px solid black; border-radius: 50%; padding: 2px;">No</span> Yes - not impacted or in contact with impacted soils Yes - groundwater impacted and/or in contact with impacted soils							
Measured depth to groundwater:				Was remedial groundwater removal conducted? Yes No			
Date Groundwater was encountered:				Commencement date of removal:			
Sheen on groundwater? Yes No				Volume of groundwater removed prior to sampling:			
Free product observed? Yes No				Volume of groundwater removed post sampling:			
Total number of samples collected:				Total Volume of groundwater removed:			
Total number of samples submitted to lab for analysis:							

## Flowline Closure Checklist

### COGCC Rule 911.a.(4) Environmental Site Closure Assessment Field Form

Additional Attachments:	Tank Battery Closure —	Wellhead Closure 01/26/24	Pit Closure —	Partially Buried Vault Closure —
Site Name & COGCC Facility Number: UPV #23-0214		Date: 02/15/24		Remediation Project #: 29488
Associated Wells: 05-123-18051		Age of Site: years		Number of Photos Attached: 1
Starting point: (GPS coordinates and descriptions) 40.303030 / -104.514800 (@ Wellhead)				
End point: (GPS coordinates and descriptions) 40.298531 / -104.512821 (@ Separator)				
USCS Soil Type: Clayey SAND			Estimated Depth to Groundwater: ~10-15'	
Hydrocarbon Impacted Soils / Spills: (Note estimated size and if impact appears to be surficial or extends to an unknown depth) Slight petroleum hydrocarbon odor observed. No staining observed.				
Salt Crusted Soils or Impacted Vegetation: (Note estimated size and if impact appears to be surficial or extends to an unknown depth) None observed				
Flowlines				
Flowline type	O, G, W			
Depth	~3'			
Age	years			
Length	~2060'			
Construction Material	Steel			
Were flowlines pulled?	No - Abandoned in Place			
Visual Integrity of lines	Good			
Visual impacts if trenched	Slight petroleum hydrocarbon odor observed. No staining observed.			
PID Readings if trenched	10.0			
Sample taken? Location/Sample ID#	FL-SS-01			
Photo Number(s)	See photo log			
Other observations regarding on location flowlines: Flowline abandoned in place. Flowline Pt A assessed during wellhead decommissioning. Flowline Pt B assessed + lab analyzed.				
Summary				
Was impacted soil identified? <input checked="" type="radio"/> No      Yes - less than 10 cubic yards      Yes - more than 10 cubic yards				
Total number of samples field screened: 1		Total number of samples collected: 1		
Highest PID Reading: 10.0		Total number of samples submitted to lab for analysis: 1		
If more than 10 cubic yards of impacted soil were observed:				
Vertical extent:		Estimated spill volume:		
Lateral extent:		Volume of soil removed:		
Is additional investigation required?		N/A		
Was groundwater encountered during the investigation? <input checked="" type="radio"/> No      Yes - not impacted or in contact with impacted soils      Yes - groundwater impacted and/or in contact with impacted soils				
Measured depth to groundwater:		Was remedial groundwater removal conducted? Yes      No		
Date Groundwater was encountered:		Commencement date of removal:		
Sheen on groundwater?      Yes      No		Volume of groundwater removed prior to sampling:		
Free product observed?      Yes      No		Volume of groundwater removed post sampling:		
Total number of samples collected:		Total Volume of groundwater removed:		
Total number of samples submitted to lab for analysis:				



## **FIGURES**

**Figure 1: Topographic Site Location Map**

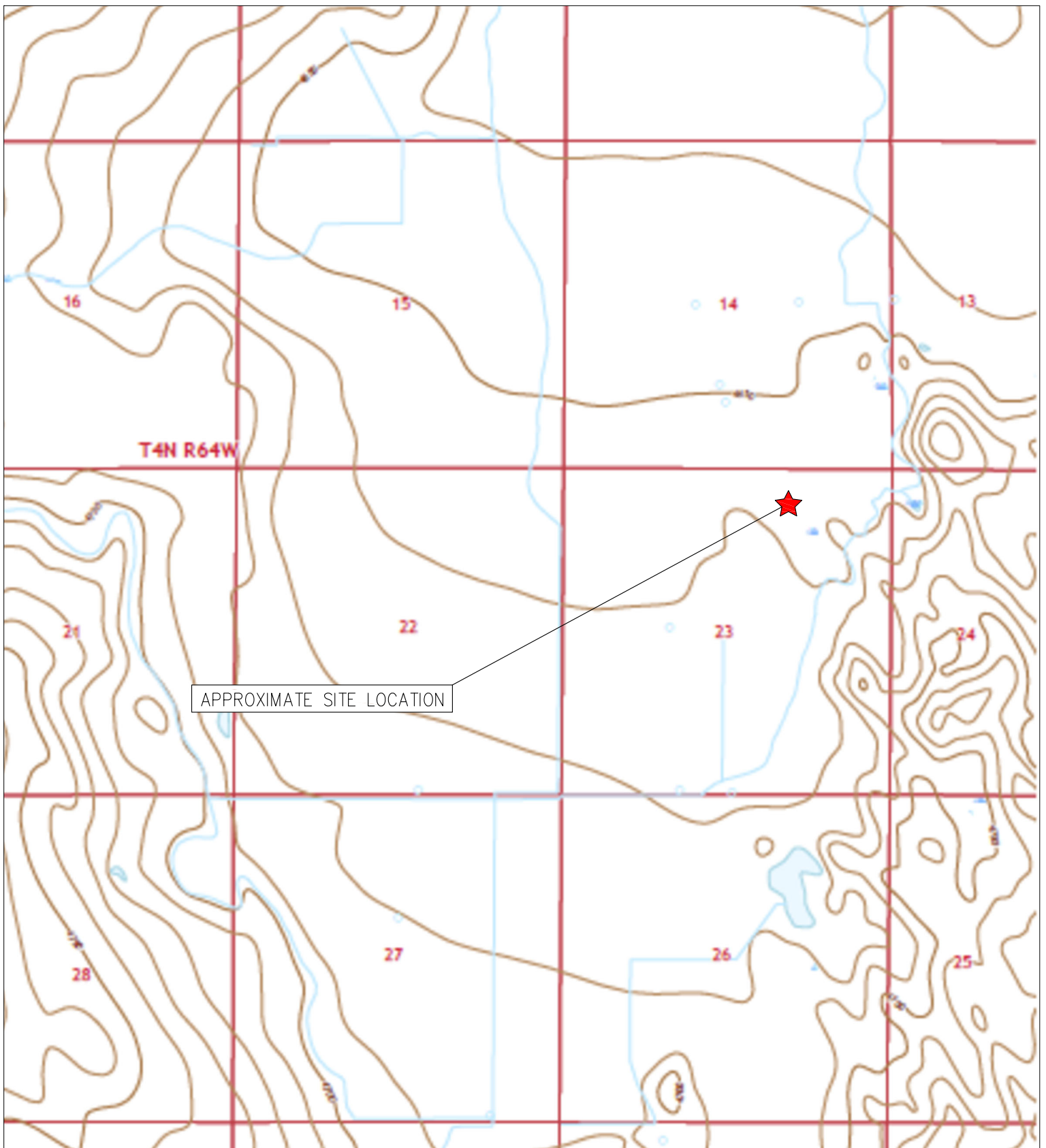
**Figure 2: Aerial Site Location Map**

**Figure 3: Sample Location Map**

**Figure 4: Soil Analytical Map**

**Figure 5: Polycyclic Aromatic Hydrocarbons Map**

**Figure 6: Metals in Soil Map**



TOPOGRAPHIC SITE LOCATION MAP  
 UPV #23-0214  
 CLOSURE ASSESSMENT  
 40.303030 / -104.514800  
 NW¼ NE¼ SEC.23 T4N R64W 6PM  
 WELD COUNTY, COLORADO  
 API # 05-123-18051  
 REMEDIATION # 29488



**EAGLE**  
 ENVIRONMENTAL  
 CONSULTING, LLC

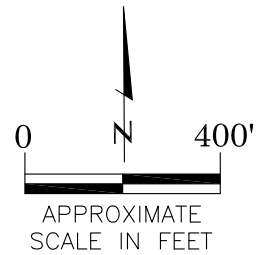
8000 W 44th Ave, Wheat Ridge, CO 80033  
 Ph: 303-433-0479 • F: 303-325-5449





**LEGEND**

- FORMER UPV #23-0214 WELLHEAD (PLUGGED AND ABANDONED)
- ASSOCIATED SEPARATOR
- APPROXIMATE FLOWLINE LOCATION (ABANDONED IN PLACE)



**AERIAL SITE LOCATION MAP**  
 UPV #23-0214  
 CLOSURE ASSESSMENT  
 40.303030 / -104.514800  
 NW¼ NE¼ SEC.23 T4N R64W 6PM  
 WELD COUNTY, COLORADO  
 API # 05-123-18051  
 REMEDIATION # 29488

FIGURE NO.  
2

DRAWN BY:  
SL



**EAGLE**  
 ENVIRONMENTAL  
 CONSULTING, LLC

8000 W 44th Ave, Wheat Ridge, CO 80033  
 Ph: 303-433-0479 • F: 303-325-5449



**LEGEND**

- WELLHEAD ASSESSMENT BOUNDARIES
- APPROXIMATE FLOWLINE LOCATION (ABANDONED IN PLACE)
- APPROXIMATE LOCATION OF SOIL SAMPLES SUBMITTED FOR LABORATORY ANALYSIS
- APPROXIMATE LOCATION OF SOIL SAMPLES FIELD SCREENED, ONLY, WITH PHOTOIONIZATION DETECTOR

SAMPLE LOCATION MAP  
 UPV #23-0214  
 CLOSURE ASSESSMENT  
 40.303030 / -104.514800  
 NW¼ NE¼ SEC.23 T4N R64W 6PM  
 WELD COUNTY, COLORADO  
 API # 05-123-18051  
 REMEDIATION # 29488

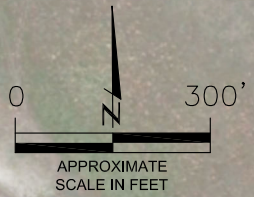
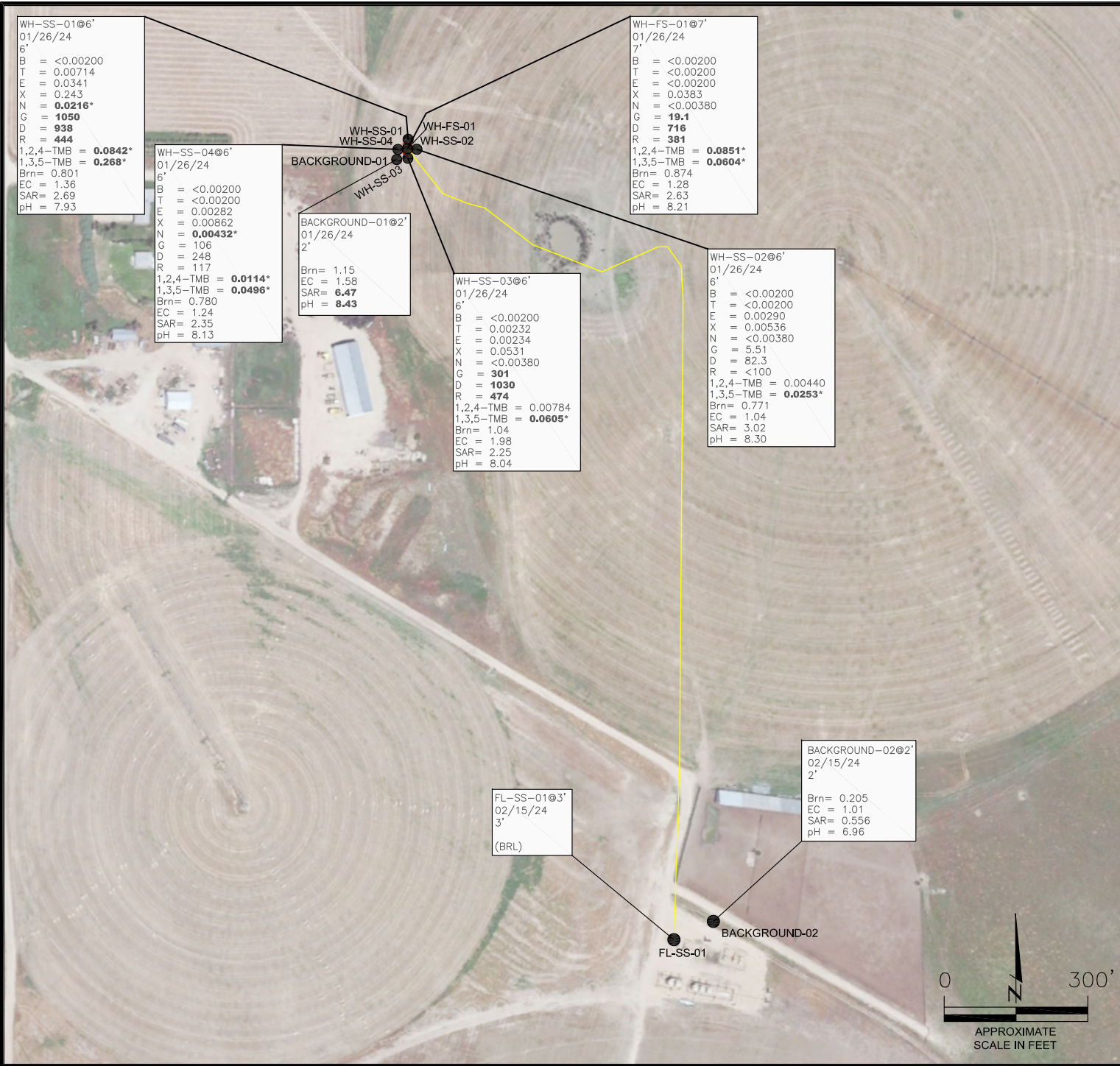


FIGURE NO.  
3  
 DRAWN BY:  
RA

**EAGLE**  
 ENVIRONMENTAL  
 CONSULTING, LLC  
 8000 W 44th Ave, Wheat Ridge, CO 80033  
 Ph: 303-433-0479 • F: 303-325-5449



WH-SS-01@6'  
01/26/24  
6'  
B = <0.00200  
T = 0.00714  
E = 0.0341  
X = 0.243  
N = **0.0216\***  
G = **1050**  
D = **938**  
R = **444**  
1,2,4-TMB = **0.0842\***  
1,3,5-TMB = **0.268\***  
Brn = 0.801  
EC = 1.36  
SAR = 2.69  
pH = 7.93

WH-SS-04@6'  
01/26/24  
6'  
B = <0.00200  
T = <0.00200  
E = 0.00282  
X = 0.00862  
N = **0.00432\***  
G = 106  
D = 248  
R = 117  
1,2,4-TMB = **0.0114\***  
1,3,5-TMB = **0.0496\***  
Brn = 0.780  
EC = 1.24  
SAR = 2.35  
pH = 8.13

BACKGROUND-01@2'  
01/26/24  
2'  
Brn = 1.15  
EC = 1.58  
SAR = **6.47**  
pH = **8.43**

WH-SS-03@6'  
01/26/24  
6'  
B = <0.00200  
T = 0.00232  
E = 0.00234  
X = 0.0531  
N = <0.00380  
G = **301**  
D = **1030**  
R = **474**  
1,2,4-TMB = 0.00784  
1,3,5-TMB = **0.0605\***  
Brn = 1.04  
EC = 1.98  
SAR = 2.25  
pH = 8.04

WH-FS-01@7'  
01/26/24  
7'  
B = <0.00200  
T = <0.00200  
E = <0.00200  
X = 0.0383  
N = <0.00380  
G = **19.1**  
D = **716**  
R = **381**  
1,2,4-TMB = **0.0851\***  
1,3,5-TMB = **0.0604\***  
Brn = 0.874  
EC = 1.28  
SAR = 2.63  
pH = 8.21

WH-SS-02@6'  
01/26/24  
6'  
B = <0.00200  
T = <0.00200  
E = 0.00290  
X = 0.00536  
N = <0.00380  
G = 5.51  
D = 82.3  
R = <100  
1,2,4-TMB = 0.00440  
1,3,5-TMB = **0.0253\***  
Brn = 0.771  
EC = 1.04  
SAR = 3.02  
pH = 8.30

BACKGROUND-02@2'  
02/15/24  
2'  
Brn = 0.205  
EC = 1.01  
SAR = 0.556  
pH = 6.96

FL-SS-01@3'  
02/15/24  
3'  
(BRL)

**LEGEND**

- WELLHEAD ASSESSMENT BOUNDARIES
- APPROXIMATE FLOWLINE LOCATION (ABANDONED IN PLACE)
- APPROXIMATE LOCATION OF SOIL SAMPLES SUBMITTED FOR LABORATORY ANALYSIS

**PARAMETERS**

**SAMPLE LOCATION**  
DATE  
DEPTH (FEET)  
B = BENZENE (mg/kg)  
T = TOLUENE (mg/kg)  
E = ETHYLBENZENE (mg/kg)  
X = TOTAL XYLENES (mg/kg)  
N = NAPHTHALENE (mg/kg)  
G = TPH-GRO (mg/kg)  
D = TPH-DRO (mg/kg)  
R = TPH-RRO (mg/kg)  
1,2,4-TMB = 1,2,4 TRIMETHYLBENZENE (mg/kg)  
1,3,5-TMB = 1,3,5 TRIMETHYLBENZENE (mg/kg)  
Brn = BORON (mg/L)  
EC = SPECIFIC CONDUCTANCE (mmhos/cm)  
SAR = SODIUM ADSORPTION RATIO  
pH = pH (pH UNITS)

mg/kg = MILLIGRAMS PER KILOGRAM  
mg/L = MILLIGRAMS PER LITER  
mmhos/cm = MILLIMHOS PER CENTIMETER

(BRL) = ALL VALUES BELOW REGULATORY LIMITS

TPH-GRO = TOTAL PETROLEUM HYDROCARBONS - GASOLINE RANGE ORGANICS  
TPH-DRO = TOTAL PETROLEUM HYDROCARBONS - DIESEL RANGE ORGANICS  
TPH-RRO = TOTAL PETROLEUM HYDROCARBONS - RESIDUAL RANGE ORGANICS

NOTES:  
VALUES PRESENTED WITH A LESS THAN SYMBOL (<) DID NOT CONTAIN CONCENTRATIONS AT OR ABOVE LABORATORY DETECTION LIMITS.

VALUES PRESENTED IN **BOLD** EXCEED ECMC TABLE 915-1 REGULATORY LIMITS.

VALUES PRESENTED WITH ASTERISK (\*) EXCEED ECMC TABLE 915-1 PROTECTION OF GROUNDWATER SOIL SCREENING LEVELS, ONLY.

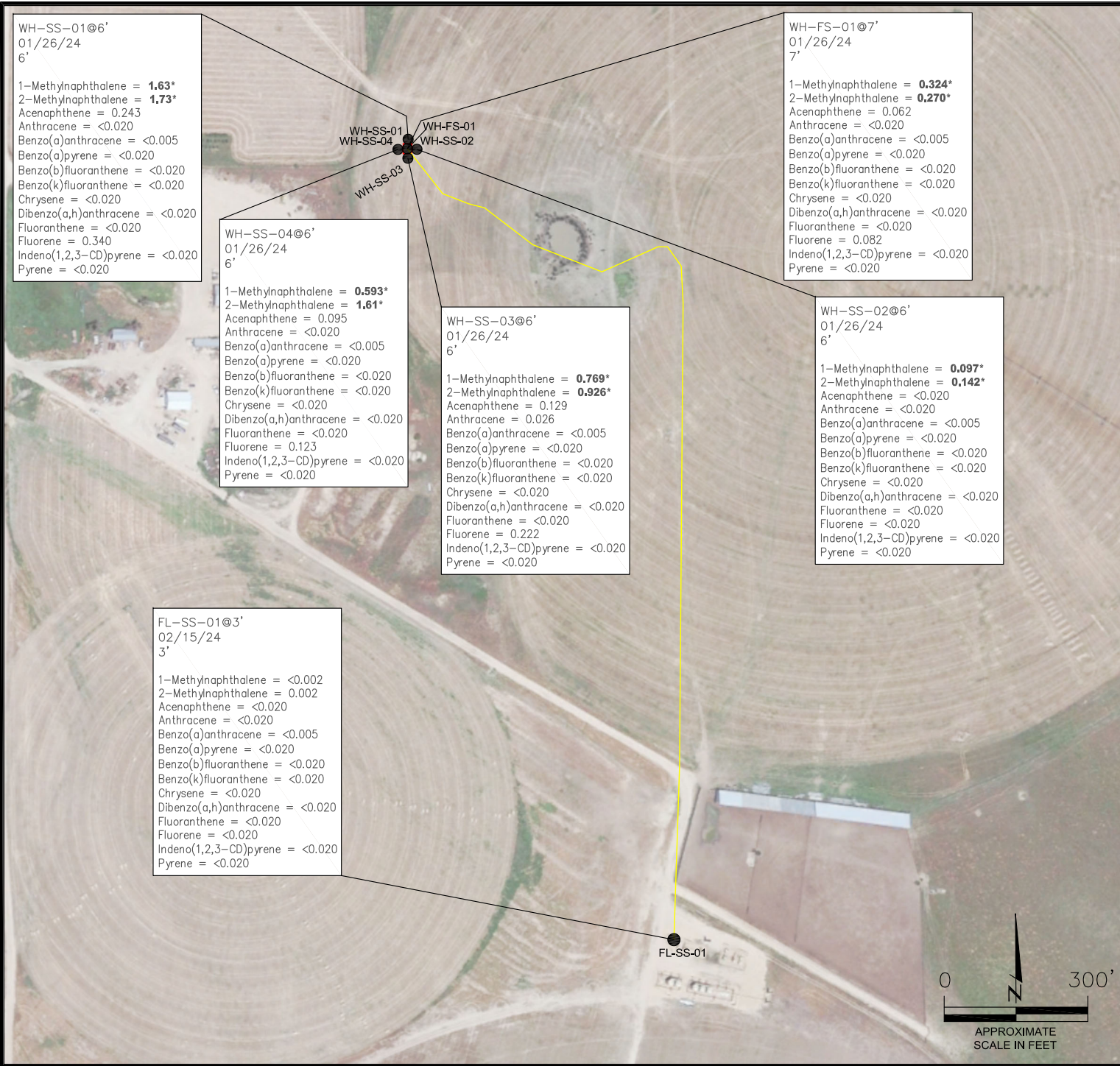
ECMC = ENERGY & CARBON MANAGEMENT COMMISSION

---

**SOIL ANALYTICAL MAP**  
UPV #23-0214  
CLOSURE ASSESSMENT  
40.303030 / -104.514800  
NW¼ NE¼ SEC.23 T4N R64W 6PM  
WELD COUNTY, COLORADO  
API # 05-123-18051  
REMEDATION # 29488

---

FIGURE NO. 4	  APPROXIMATE SCALE IN FEET	<b>EAGLE</b> ENVIRONMENTAL CONSULTING, LLC <small>8000 W 44th Ave, Wheat Ridge, CO 80033          Ph: 303-433-0479 • F: 303-325-5449</small>
DRAWN BY: RA		



WH-SS-01@6'  
01/26/24  
6'

1-Methylnaphthalene = **1.63\***  
2-Methylnaphthalene = **1.73\***  
Acenaphthene = 0.243  
Anthracene = <0.020  
Benzo(a)anthracene = <0.005  
Benzo(a)pyrene = <0.020  
Benzo(b)fluoranthene = <0.020  
Benzo(k)fluoranthene = <0.020  
Chrysene = <0.020  
Dibenzo(a,h)anthracene = <0.020  
Fluoranthene = <0.020  
Fluorene = 0.340  
Indeno(1,2,3-CD)pyrene = <0.020  
Pyrene = <0.020

WH-SS-04@6'  
01/26/24  
6'

1-Methylnaphthalene = **0.593\***  
2-Methylnaphthalene = **1.61\***  
Acenaphthene = 0.095  
Anthracene = <0.020  
Benzo(a)anthracene = <0.005  
Benzo(a)pyrene = <0.020  
Benzo(b)fluoranthene = <0.020  
Benzo(k)fluoranthene = <0.020  
Chrysene = <0.020  
Dibenzo(a,h)anthracene = <0.020  
Fluoranthene = <0.020  
Fluorene = 0.123  
Indeno(1,2,3-CD)pyrene = <0.020  
Pyrene = <0.020

WH-SS-03@6'  
01/26/24  
6'

1-Methylnaphthalene = **0.769\***  
2-Methylnaphthalene = **0.926\***  
Acenaphthene = 0.129  
Anthracene = 0.026  
Benzo(a)anthracene = <0.005  
Benzo(a)pyrene = <0.020  
Benzo(b)fluoranthene = <0.020  
Benzo(k)fluoranthene = <0.020  
Chrysene = <0.020  
Dibenzo(a,h)anthracene = <0.020  
Fluoranthene = <0.020  
Fluorene = 0.222  
Indeno(1,2,3-CD)pyrene = <0.020  
Pyrene = <0.020

WH-FS-01@7'  
01/26/24  
7'

1-Methylnaphthalene = **0.324\***  
2-Methylnaphthalene = **0.270\***  
Acenaphthene = 0.062  
Anthracene = <0.020  
Benzo(a)anthracene = <0.005  
Benzo(a)pyrene = <0.020  
Benzo(b)fluoranthene = <0.020  
Benzo(k)fluoranthene = <0.020  
Chrysene = <0.020  
Dibenzo(a,h)anthracene = <0.020  
Fluoranthene = <0.020  
Fluorene = 0.082  
Indeno(1,2,3-CD)pyrene = <0.020  
Pyrene = <0.020

WH-SS-02@6'  
01/26/24  
6'

1-Methylnaphthalene = **0.097\***  
2-Methylnaphthalene = **0.142\***  
Acenaphthene = <0.020  
Anthracene = <0.020  
Benzo(a)anthracene = <0.005  
Benzo(a)pyrene = <0.020  
Benzo(b)fluoranthene = <0.020  
Benzo(k)fluoranthene = <0.020  
Chrysene = <0.020  
Dibenzo(a,h)anthracene = <0.020  
Fluoranthene = <0.020  
Fluorene = <0.020  
Indeno(1,2,3-CD)pyrene = <0.020  
Pyrene = <0.020

FL-SS-01@3'  
02/15/24  
3'

1-Methylnaphthalene = <0.002  
2-Methylnaphthalene = 0.002  
Acenaphthene = <0.020  
Anthracene = <0.020  
Benzo(a)anthracene = <0.005  
Benzo(a)pyrene = <0.020  
Benzo(b)fluoranthene = <0.020  
Benzo(k)fluoranthene = <0.020  
Chrysene = <0.020  
Dibenzo(a,h)anthracene = <0.020  
Fluoranthene = <0.020  
Fluorene = <0.020  
Indeno(1,2,3-CD)pyrene = <0.020  
Pyrene = <0.020

**LEGEND**

— WELLHEAD ASSESSMENT BOUNDARIES

— APPROXIMATE FLOWLINE LOCATION (ABANDONED IN PLACE)

● SS-02 APPROXIMATE LOCATION OF SOIL SAMPLES SUBMITTED FOR LABORATORY ANALYSIS

**PARAMETERS**

SAMPLE LOCATION  
DATE SAMPLE COLLECTED  
APPROXIMATE DEPTH

POLYCYCLIC AROMATIC HYDROCARBONS (PAHs) (mg/kg)

mg/kg = MILLIGRAMS PER KILOGRAM

**NOTES:**  
VALUES PRESENTED WITH A LESS THAN SYMBOL (<) DID NOT CONTAIN CONCENTRATIONS AT OR ABOVE LABORATORY DETECTION LIMITS.

VALUES PRESENTED IN **BOLD** EXCEED ECMC TABLE 915-1 REGULATORY LIMITS.

VALUES PRESENTED WITH AN ASTERISK (\*) EXCEED ECMC TABLE 915-1 GROUNDWATER SOIL SCREENING LEVELS, ONLY.

ECMC = ENERGY & CARBON MANAGEMENT COMMISSION

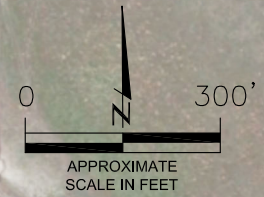
**POLYCYCLIC AROMATIC HYDROCARBONS MAP**  
UPV #23-0214  
CLOSURE ASSESSMENT  
40.303030 / -104.514800  
NW¼ NE¼ SEC.23 T4N R64W 6PM  
WELD COUNTY, COLORADO  
API # 05-123-18051  
REMIEDIATION # 29488

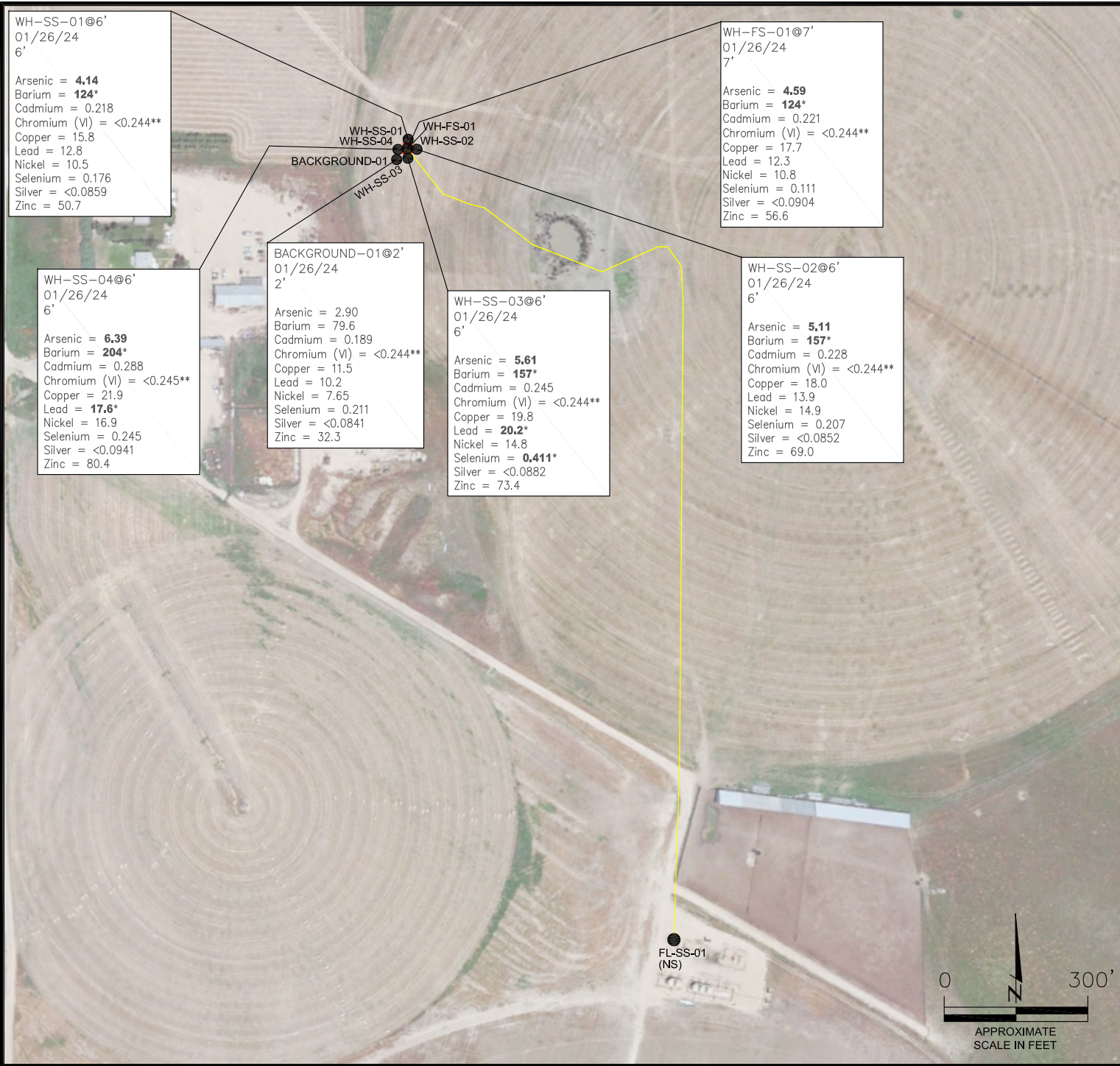
FIGURE NO.  
5

DRAWN BY:  
RA

**EAGLE**  
ENVIRONMENTAL  
CONSULTING, LLC

8000 W 44th Ave, Wheat Ridge, CO 80033  
Ph: 303-433-0479 • F: 303-325-5449





WH-SS-01@6'  
01/26/24  
6'

Arsenic = **4.14**  
Barium = **124\***  
Cadmium = 0.218  
Chromium (VI) = <0.244\*\*  
Copper = 15.8  
Lead = 12.8  
Nickel = 10.5  
Selenium = 0.176  
Silver = <0.0859  
Zinc = 50.7

WH-FS-01@7'  
01/26/24  
7'

Arsenic = **4.59**  
Barium = **124\***  
Cadmium = 0.221  
Chromium (VI) = <0.244\*\*  
Copper = 17.7  
Lead = 12.3  
Nickel = 10.8  
Selenium = 0.111  
Silver = <0.0904  
Zinc = 56.6

WH-SS-01  
WH-SS-04  
BACKGROUND-01  
WH-SS-03

BACKGROUND-01@2'  
01/26/24  
2'

Arsenic = 2.90  
Barium = 79.6  
Cadmium = 0.189  
Chromium (VI) = <0.244\*\*  
Copper = 11.5  
Lead = 10.2  
Nickel = 7.65  
Selenium = 0.211  
Silver = <0.0841  
Zinc = 32.3

WH-SS-03@6'  
01/26/24  
6'

Arsenic = **5.61**  
Barium = **157\***  
Cadmium = 0.245  
Chromium (VI) = <0.244\*\*  
Copper = 19.8  
Lead = **20.2\***  
Nickel = 14.8  
Selenium = **0.411\***  
Silver = <0.0882  
Zinc = 73.4

WH-SS-02@6'  
01/26/24  
6'

Arsenic = **5.11**  
Barium = **157\***  
Cadmium = 0.228  
Chromium (VI) = <0.244\*\*  
Copper = 18.0  
Lead = 13.9  
Nickel = 14.9  
Selenium = 0.207  
Silver = <0.0852  
Zinc = 69.0

WH-SS-04@6'  
01/26/24  
6'

Arsenic = **6.39**  
Barium = **204\***  
Cadmium = 0.288  
Chromium (VI) = <0.245\*\*  
Copper = 21.9  
Lead = **17.6\***  
Nickel = 16.9  
Selenium = 0.245  
Silver = <0.0941  
Zinc = 80.4

**LEGEND**

- WELLHEAD ASSESSMENT BOUNDARIES
- APPROXIMATE FLOWLINE LOCATION (ABANDONED IN PLACE)
- APPROXIMATE LOCATION OF SOIL SAMPLES SUBMITTED FOR LABORATORY ANALYSIS

**PARAMETERS**

SAMPLE LOCATION  
DATE SAMPLE COLLECTED  
APPROXIMATE DEPTH  
Arsenic = (mg/kg)  
Barium = (mg/kg)  
Cadmium = (mg/kg)  
Chromium (VI) = (mg/kg)  
Copper = (mg/kg)  
Lead = (mg/kg)  
Nickel = (mg/kg)  
Selenium = (mg/kg)  
Silver = (mg/kg)  
Zinc = (mg/kg)

mg/kg = MILLIGRAMS PER KILOGRAM

(NS) – NOT SAMPLED

NOTES:  
VALUES PRESENTED WITH A LESS THAN SYMBOL (<) DID NOT CONTAIN CONCENTRATIONS AT/OR ABOVE LABORATORY REPORTING LIMITS AND/OR MINIMUM DETECTION LIMITS.

ELEVATED METALS ARE NATURALLY OCCURRING IN COLORADO. LOCAL CLEAN-UP LEVELS ARE 1.25\*BACKGROUND CONCENTRATIONS WHERE APPLICABLE.

VALUES PRESENTED IN **BOLD** EXCEED ECMC TABLE 915-1 REGULATORY LIMITS AND APPLICABLE LOCAL CLEAN-UP LEVELS.

\*VALUES EXCEED ECMC TABLE 915-1 PROTECTION OF GROUNDWATER SOIL SCREENING LEVELS, ONLY.

\*\*ACHIEVABLE PRACTICAL QUANTITATIVE LIMITS FOR HEXAVALENT CHROMIUM (Cr VI) IN SOILS IS IN THE RANGE OF 0.1 TO 1 mg/kg.

ECMC = ENERGY & CARBON MANAGEMENT COMMISSION

METALS IN SOIL MAP  
UPV #23-0214  
CLOSURE ASSESSMENT  
40.303030 / -104.514800  
NW¼ NE¼ SEC.23 T4N R64W 6PM  
WELD COUNTY, COLORADO  
API # 05-123-18051  
REMEDATION # 29488

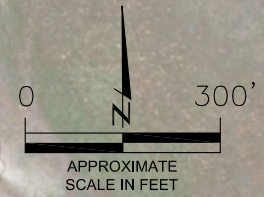


FIGURE NO.  
6  
DRAWN BY:  
RA

**EAGLE**  
ENVIRONMENTAL  
CONSULTING, LLC  
8000 W 44th Ave, Wheat Ridge, CO 80033  
Ph: 303-433-0479 • F: 303-325-5449



## **TABLES**

**Table 1: Photoionization Detector Reading Summary**

**Table 2: Soil Analytical Results Summary**

**Table 3: Polycyclic Aromatic Hydrocarbons Analytical Results Summary**

**Table 4: Metals Analytical Results Summary**

**TABLE 1**  
**PHOTOIONIZATION DETECTOR READING SUMMARY**  
**UPV #23-0214**  
**CLOSURE ASSESSMENT**  
**40.303030 / -104.514800**  
**NW¼ NE¼ SEC.23 T4N R64W 6PM**  
**WELD COUNTY, COLORADO**  
**API # 05-123-18051**  
**REMEDIAION # 29488**

Sample Location (Latitude/Longitude)	Date	Approximate Depth (feet)	PID Reading (ppm-v)	Lab Submission (Y/N)
WH-FS-01 @ 7' (40.303039 / -104.514809)	01/26/24	7	288.3	Y
WH-SS-01 @ 6' (40.303049 / -104.514809)	01/26/24	6	481.1	Y
WH-SS-02 @ 6' (40.303039 / -104.514796)	01/26/24	6	226.9	Y
WH-SS-03 @ 6' (40.303027 / -104.514809)	01/26/24	6	479.8	Y
WH-SS-04 @ 6' (40.303039 / -104.514823)	01/26/24	6	388.9	Y
WH-N @ 0.5' (40.303063 / -104.514809)	01/26/24	0.5	1.1	N
WH-E @ 0.5' (40.303037 / -104.514770)	01/26/24	0.5	1.0	N
WH-S @ 0.5' (40.303011 / -104.514808)	01/26/24	0.5	0.8	N
WH-W @ 0.5' (40.303034 / -104.514843)	01/26/24	0.5	1.2	N
FL-SS-01 @ 3' (40.298543 / -104.512834)	02/15/24	3	10.0	Y
Background-01 @ 2' (40.303006 / -104.514899)	01/26/24	2	0.3	Y
Background-02 @ 2' (40.298624 / -104.512535)	02/15/24	2	3.8	Y
(Y/N) = Yes or No ppm-v = parts per million by volume PID = Photoionization Detector				

TABLE 2  
SOIL ANALYTICAL RESULTS SUMMARY  
UPV #23-0214  
CLOSURE ASSESSMENT  
40.303030 / -104.514800  
NW¼ NE¼ SEC.23 T4N R64W 6PM  
WELD COUNTY, COLORADO  
API # 05-123-18051  
REMEDIAION # 29488

Sample Location (Latitude/Longitude)	Date	Approximate Depth (feet)	PID Reading (ppm-v)	Benzene (mg/kg)	Toluene (mg/kg)	Ethylbenzene (mg/kg)	Total Xylenes (mg/kg)	Naphthalene (mg/kg)	TPH-GRO (mg/kg)	TPH-DRO (mg/kg)	TPH-RRO (mg/kg)	1,2,4- Trimethylbenzene (mg/kg)	1,3,5- Trimethylbenzene (mg/kg)	Boron (mg/L)	Specific Conductance (mmhos/cm)	pH (pH units)	SAR
<b>ECMC Table 915-1 Residential Screening Levels</b>				1.2	490	5.8	58	2	500			30	27	2	<4	6-8.3	<6
<b>ECMC Table 915-1 Protection of Groundwater Soil Screening Levels</b>				0.0026	0.69	0.78	9.9	0.0038	--			0.0081	0.0087	--	--	--	--
WH-FS-01 @ 7' (40.303039 / -104.514809)	01/26/24	7	288.3	<0.00200	<0.00200	<0.00200	0.0383	<0.00380	19.1	716	381	0.0851*	0.0604*	0.874	1.28	8.21	2.63
WH-SS-01 @ 6' (40.303049 / -104.514809)	01/26/24	6	481.1	<0.00200	0.00714	0.0341	0.243	0.0216*	1050	938	444	0.0842*	0.268*	0.801	1.36	7.93	2.69
WH-SS-02 @ 6' (40.303039 / -104.514796)	01/26/24	6	226.9	<0.00200	<0.00200	0.00290	0.00536	<0.00380	5.51	82.3	<100	0.00440	0.0253*	0.771	1.04	8.30	3.02
WH-SS-03 @ 6' (40.303027 / -104.514809)	01/26/24	6	479.8	<0.00200	0.00232	0.00234	0.0531	<0.00380	301	1030	474	0.00784	0.0605*	1.04	1.98	8.04	2.25
WH-SS-04 @ 6' (40.303039 / -104.514823)	01/26/24	6	388.9	<0.00200	<0.00200	0.00282	0.00862	0.00432*	106	248	117	0.0114*	0.0496*	0.780	1.24	8.13	2.35
FL-SS-01 @ 3' (40.298543 / -104.512834)	02/15/24	3	10	<0.00200	<0.00200	<0.00200	<0.00200	<0.00380	<0.200	<25.0	<100	<0.00200	<0.00200	<0.0994	0.312	7.97	0.312
Background-01 @ 2' (40.303006 / -104.514899)	01/26/24	2	0.3	NA	NA	NA	NA	NA	NA	NA	NA	NA	NA	1.15	1.58	8.43	6.47
Background-02 @ 2' (40.298624 / -104.512535)	02/15/24	2	3.8	NA	NA	NA	NA	NA	NA	NA	NA	NA	NA	0.205	1.01	6.96	0.556

ECMC = Energy & Carbon Management Commission

mg/kg = milligrams per kilogram

mmhos/cm = millimhos per centimeter

SAR = Sodium Adsorption Ratio

ppm-v = parts per million by volume

PID = photoionization detector

Notes:

Values presented with a less than symbol (<) did not contain concentrations at or above the laboratory reporting limit and/or minimum detection limit.

Values presented in **BOLD** exceed ECMC Table 915-1 Regulatory Limits.

Values presented with asterisk (\*) exceed ECMC Table 915-1 GSSLs, only.

NA - Not Analyzed

TPH-GRO = Total Petroleum Hydrocarbons - Gasoline Range Organics

TPH-DRO = Total Petroleum Hydrocarbons - Diesel Range Organics

TPH-RRO = Total Petroleum Hydrocarbons - Residual Range Organics

TABLE 3  
PAHS ANALYTICAL RESULTS SUMMARY  
UPV #23-0214  
CLOSURE ASSESSMENT  
40.303030 / -104.514800  
NW¼ NE¼ SEC.23 T4N R64W 6PM  
WELD COUNTY, COLORADO  
API # 05-123-18051  
REMEDATION # 29488

Sample Location (Latitude/Longitude)	Date	Approximate Depth (feet)	PID Reading (ppm-v)	1-Methyl- naphthalene (mg/kg)	2-Methyl- naphthalene (mg/kg)	Acenaphthene (mg/kg)	Anthracene (mg/kg)	Benzo(a)-anthracene (mg/kg)	Benzo(a)- pyrene (mg/kg)	Benzo(b)- fluoranthene (mg/kg)	Benzo(k)- fluoranthene (mg/kg)	Chrysene (mg/kg)	Dibenzo(a,h)- anthracene (mg/kg)	Fluoranthene (mg/kg)	Fluorene (mg/kg)	Ideno(1,2,3- cd)-pyrene (mg/kg)	Pyrene (mg/kg)
<b>ECMC Table 915-1 Residential Screening Levels</b>				<b>18</b>	<b>24</b>	<b>360</b>	<b>1,800</b>	<b>1.1</b>	<b>0.11</b>	<b>1.1</b>	<b>11</b>	<b>110</b>	<b>0.11</b>	<b>240</b>	<b>240</b>	<b>1.1</b>	<b>180</b>
<b>ECMC Table 915-1 Protection of Groundwater Soil Screening Levels</b>				<b>0.006</b>	<b>0.019</b>	<b>0.55</b>	<b>5.8</b>	<b>0.011</b>	<b>0.24</b>	<b>0.3</b>	<b>2.9</b>	<b>9</b>	<b>0.096</b>	<b>8.9</b>	<b>0.54</b>	<b>0.98</b>	<b>1.3</b>
WH-FS-01 @ 7' (40.303039 / -104.514809)	01/26/24	7	288.3	<b>0.324*</b>	<b>0.270*</b>	0.062	<0.020	<0.005	<0.020	<0.020	<0.020	<0.020	<0.020	<0.020	0.082	<0.020	<0.020
WH-SS-01 @ 6' (40.303049 / -104.514809)	01/26/24	6	481.1	<b>1.63*</b>	<b>1.73*</b>	0.243	<0.020	<0.005	<0.020	<0.020	<0.020	<0.020	<0.020	<0.020	0.340	<0.020	<0.020
WH-SS-02 @ 6' (40.303039 / -104.514796)	01/26/24	6	226.9	<b>0.097*</b>	<b>0.142*</b>	<0.020	<0.020	<0.005	<0.020	<0.020	<0.020	<0.020	<0.020	<0.020	<0.020	<0.020	<0.020
WH-SS-03 @ 6' (40.303027 / -104.514809)	01/26/24	6	479.8	<b>0.769*</b>	<b>0.926*</b>	0.129	0.026	<0.005	<0.020	<0.020	<0.020	<0.020	<0.020	<0.020	0.222	<0.020	<0.020
WH-SS-04 @ 6' (40.303039 / -104.514823)	01/26/24	6	388.9	<b>0.593*</b>	<b>1.61*</b>	0.095	<0.020	<0.005	<0.020	<0.020	<0.020	<0.020	<0.020	<0.020	0.123	<0.020	<0.020
FL-SS-01 @ 3' (40.298543 / -104.512834)	02/15/24	3	10.0	<0.002	0.002	<0.020	<0.020	<0.005	<0.020	<0.020	<0.020	<0.020	<0.020	<0.020	<0.020	<0.020	<0.020

ECMC = Energy & Carbon Management Commission

mg/kg = milligrams per kilogram

ppm-v = parts per million by volume

PID - photoionization detector

Notes:

Values presented with a less than symbol (<) did not contain concentrations at or above the laboratory reporting limit and/or minimum detection limit.

Values presented in **BOLD** exceed ECMC Table 915-1 Regulatory Limits.

Values presented with asterisk (\*) exceed ECMC Table 915-1 GSSLs, only.

TABLE 4  
 METALS ANALYTICAL RESULTS SUMMARY  
 UPV #23-0214  
 CLOSURE ASSESSMENT  
 40.303030 / -104.514800  
 NW¼ NE¼ SEC. 23 T4N R64W 6PM  
 WELD COUNTY, COLORADO  
 API # 05-123-18051  
 REMEDIATION # 29488

Sample Location (Latitude/Longitude)	Date	Approximate Depth (feet)	Arsenic (mg/kg)	Barium (mg/kg)	Cadmium (mg/kg)	Hexavalent Chromium (mg/kg)	Copper (mg/kg)	Lead (mg/kg)	Nickel (mg/kg)	Selenium (mg/kg)	Silver (mg/kg)	Zinc (mg/kg)
<b>ECMC Table 915-1 Residential Screening Levels</b>			<b>0.68</b>	<b>15,000</b>	<b>71</b>	<b>0.3**</b>	<b>3,100</b>	<b>400</b>	<b>1,500</b>	<b>390</b>	<b>390</b>	<b>23,000</b>
<b>ECMC Table 915-1 Protection of Groundwater Soil Screening Levels</b>			<b>0.29</b>	<b>82</b>	<b>0.38</b>	<b>0.00067**</b>	<b>46</b>	<b>14</b>	<b>26</b>	<b>0.26</b>	<b>0.8</b>	<b>370</b>
<b>Local Clean-up Levels</b>			<b>3.63</b>	<b>99.5</b>	<b>--</b>	<b>0.1 to 1**</b>	<b>--</b>	<b>--</b>	<b>--</b>	<b>0.264</b>	<b>--</b>	<b>--</b>
WH-FS-01 @ 7' (40.303039 / -104.514809)	01/26/24	7	<b>4.59</b>	<b>124*</b>	0.221	<0.244**	17.7	12.3	10.8	0.111	<0.0904	56.6
WH-SS-01 @ 6' (40.303049 / -104.514809)	01/26/24	6	<b>4.14</b>	<b>124*</b>	0.218	<0.244**	15.8	12.8	10.5	0.176	<0.0859	50.7
WH-SS-02 @ 6' (40.303039 / -104.514796)	01/26/24	6	<b>5.11</b>	<b>157*</b>	0.228	<0.244**	18.0	13.9	14.9	0.207	<0.0852	69.0
WH-SS-03 @ 6' (40.303027 / -104.514809)	01/26/24	6	<b>5.61</b>	<b>157*</b>	0.245	<0.244**	19.8	<b>20.2*</b>	14.8	<b>0.411*</b>	<0.0882	73.4
WH-SS-04 @ 6' (40.303039 / -104.514823)	01/26/24	6	<b>6.39</b>	<b>204*</b>	0.288	<0.245**	21.9	<b>17.6*</b>	16.9	0.245	<0.0941	80.4
Background-01 @ 2' (40.303006 / -104.514899)	01/26/24	2	2.90	79.6	0.189	<0.244**	11.5	10.2	7.65	0.211	<0.0841	32.3

ECMC = Energy & Carbon Management Commission  
 mg/kg = milligrams per kilogram

Notes:  
 Values presented with a less than symbol (<) did not contain concentrations at or above the laboratory reporting limit and/or minimum detection limit.  
 Elevated metals are naturally occurring in Colorado. Local Clean-up Levels are 1.25\*Background concentrations where applicable.  
 Values presented in **BOLD** exceed ECMC Table 915-1 Regulatory Limits and applicable Local Clean-up Levels.  
 Values presented with asterisk (\*) exceed ECMC Table 915-1 GSSLs, only.  
 \*\*Achievable practical quantitative limits for Hexavalent Chromium in soils is in the range of 0.1 to 1 mg/kg.



## **ATTACHMENT A**

### **Photo Log**

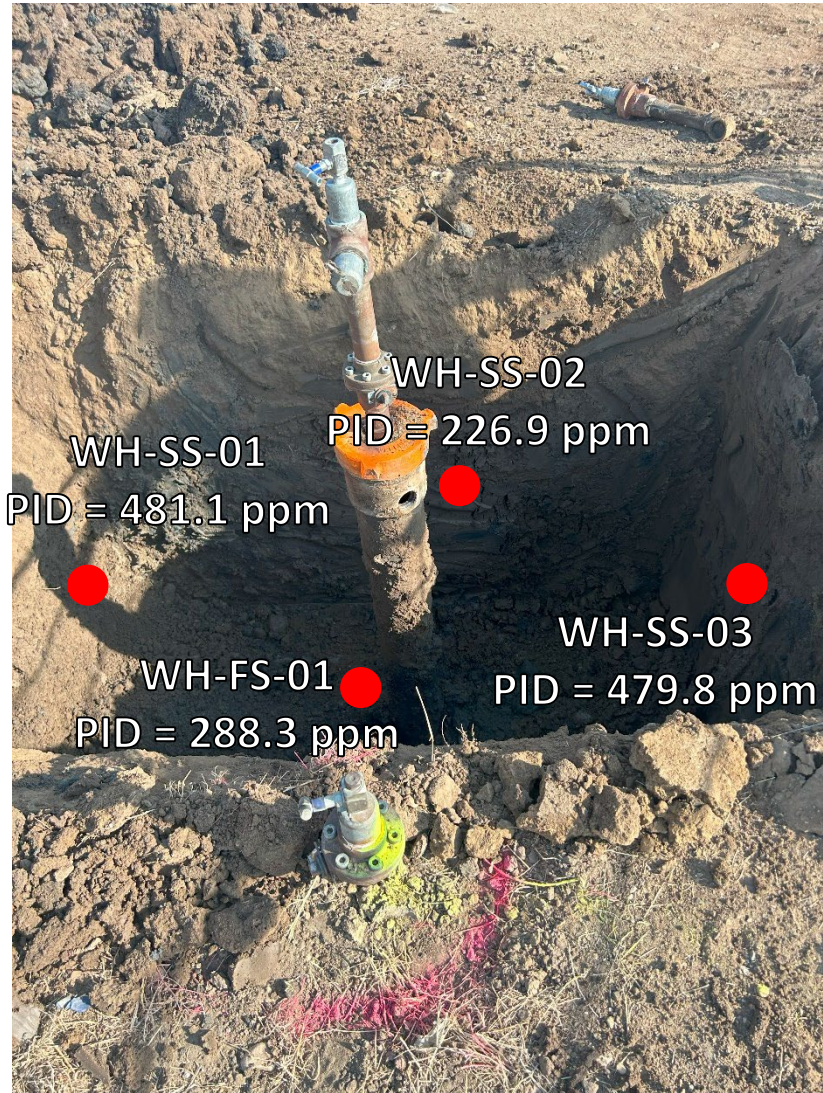
UPV #23-0214  
API # 05-123-18051  
Remediation # 29488

Closure Assessment

January – February 2024

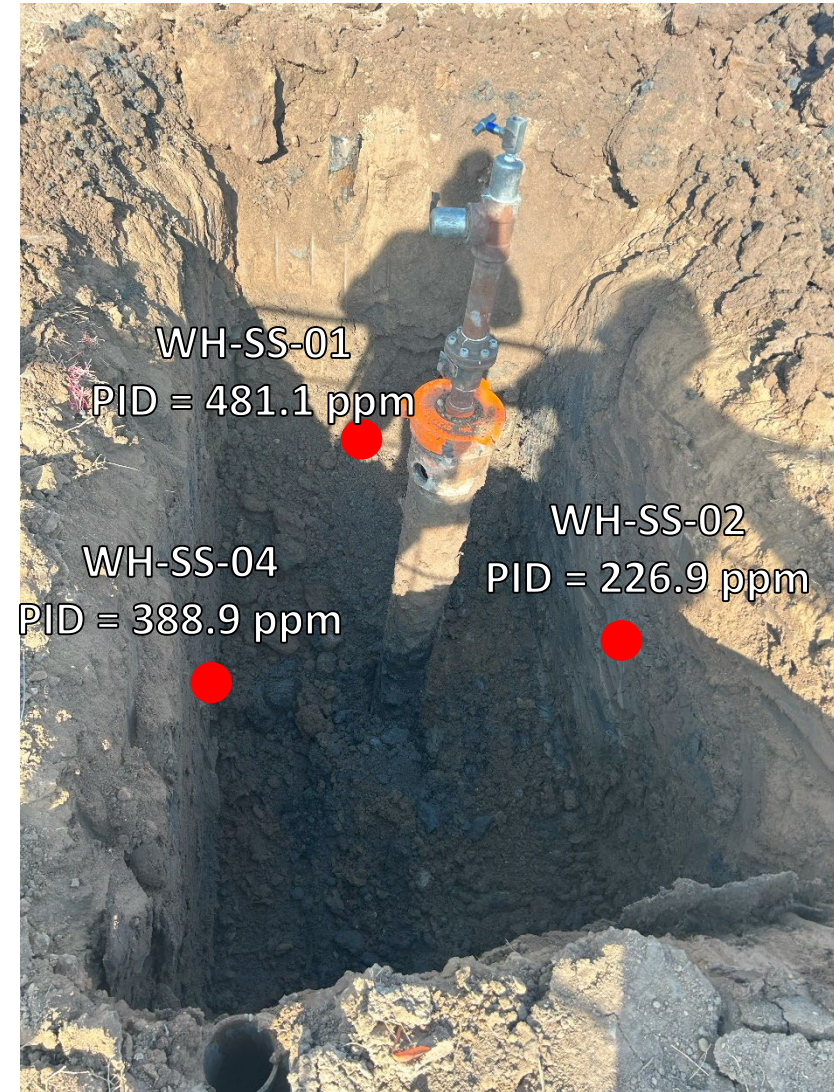


# Wellhead Excavation – 01/26/24



Looking east

Petroleum hydrocarbon staining and strong odor observed



Looking north

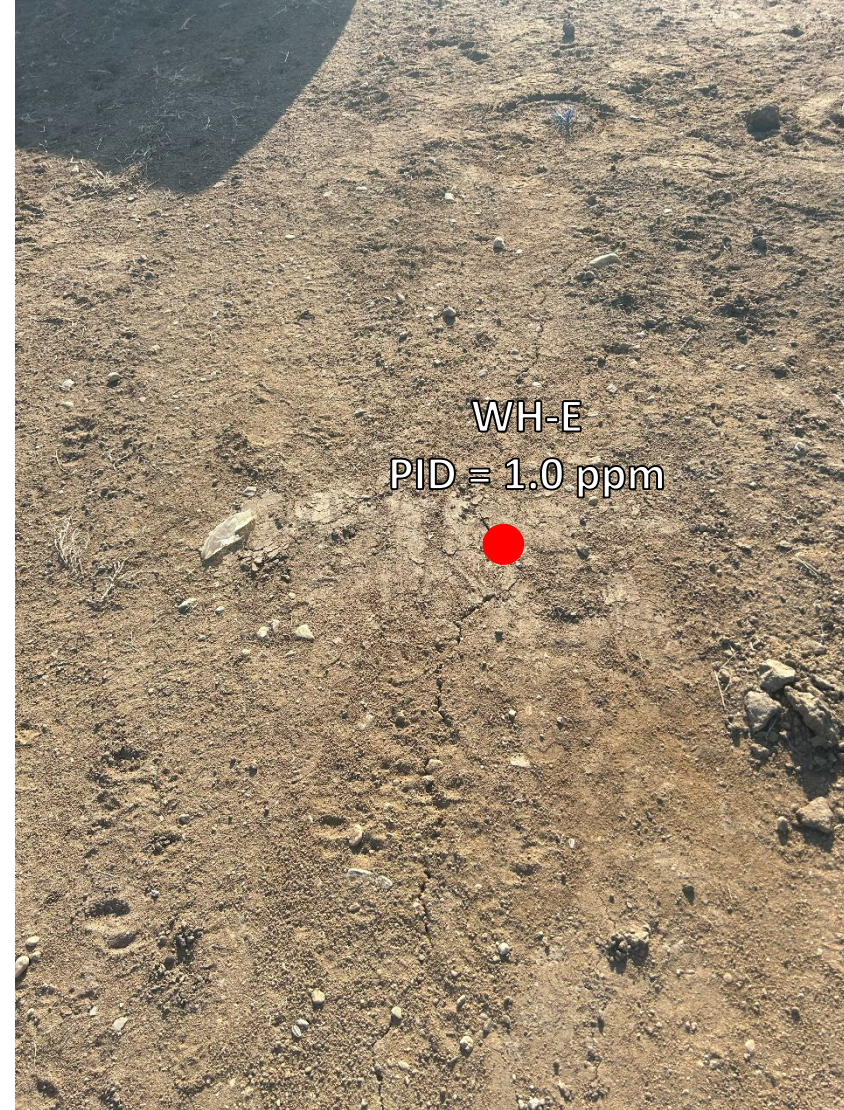
Petroleum hydrocarbon staining and strong odor observed

# Wellhead Surface – 01/26/24



Looking north

Site in good condition – no petroleum hydrocarbon staining or odor  
Observed on surface around wellhead



Looking east

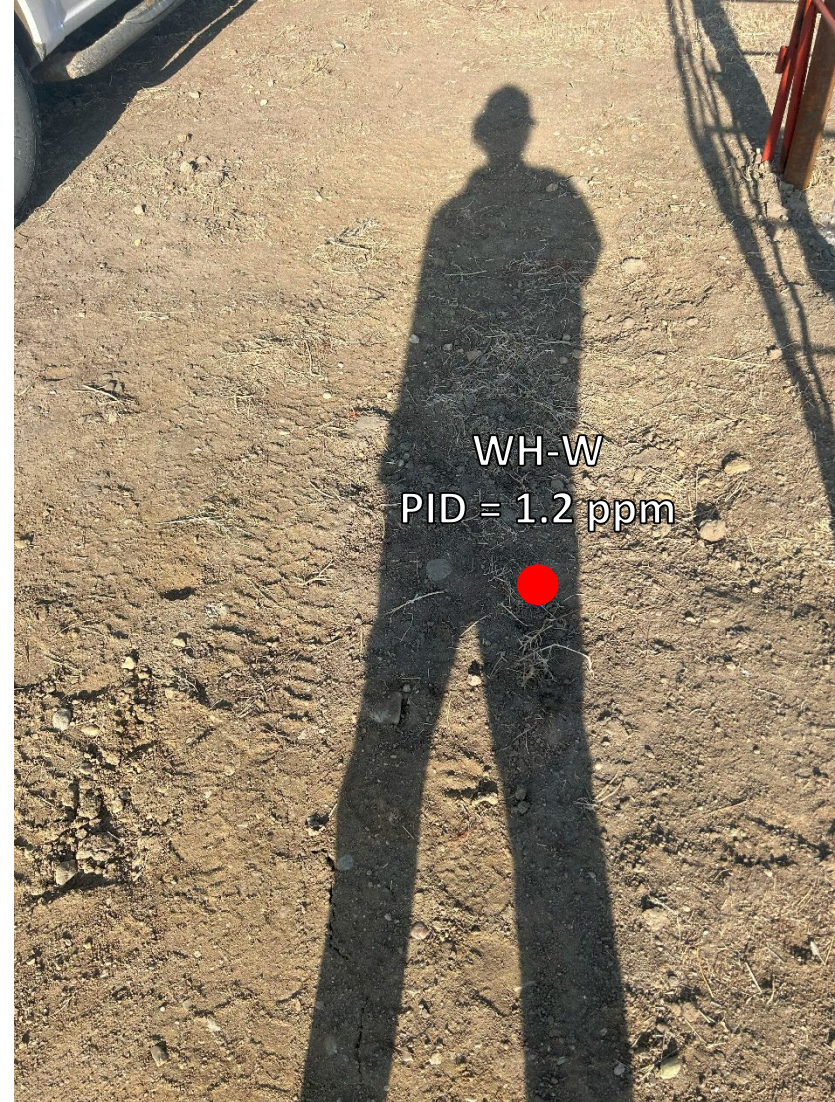
Site in good condition – no petroleum hydrocarbon staining or odor  
Observed on surface around wellhead

# Wellhead Surface – 01/26/24



Looking south

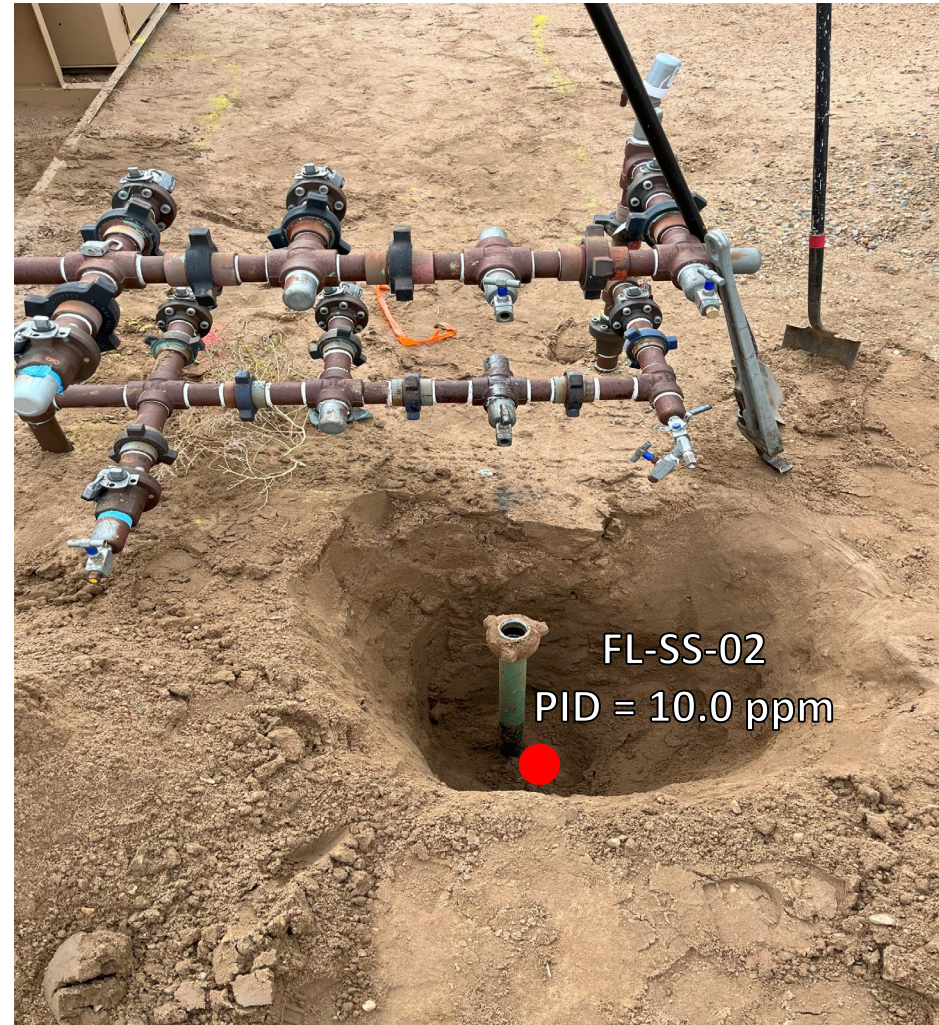
Site in good condition – no petroleum hydrocarbon staining or odor  
Observed on surface around wellhead



Looking west

Site in good condition – no petroleum hydrocarbon staining or odor  
Observed on surface around wellhead

# Flowline Assessment – 02/15/24



Looking south at flowline Pt B/terminus at separator

No petroleum hydrocarbon staining observed. Slight petroleum hydrocarbon odor observed



## **ATTACHMENT B**

### **Laboratory Analytical Reports**



February 19, 2024

Eagle Environmental Consulting, LLC

Andrew Newberry

8000 W 44th Ave

Wheat Ridge CO 80033

Project Name - Noble - UPV #23-0214

Project Number - [none]

Attached are your analytical results for Noble - UPV #23-0214 received by Origins Laboratory, Inc. January 26, 2024. This project is associated with Origins project number Y401684-01.

The analytical results in the following report were analyzed under the guidelines of EPA Methods. These methods are identified as follows; "SW" are defined in SW-846, "EPA" are defined in 40CFR part 136 and "SM" are defined in the most current revision of Standard Methods For the Examination of Water and Wastewater.

The analytical results apply specifically to the samples and analyses specified per the attached Chain of Custody. As such, this report shall not be reproduced except in full, without the written approval of Origin's laboratory.

Unless otherwise noted, the analytical results for all soil samples are reported on a wet weight basis. All analytical analyses were performed under NELAP guidelines unless noted by a data qualifier.

Any holding time exceedances, deviations from the method specifications or deviations from Origins Laboratory's Standard Operating Procedures are outlined in the case narrative.

Thank you for selecting Origins for your analytical needs. Please contact us with any questions concerning this report, or if we can help with anything at all.

Origins Laboratory, Inc.  
303.433.1322  
o-squad@oelabinc.com



Eagle Environmental Consulting, LLC  
 8000 W 44th Ave  
 Wheat Ridge CO 80033

Andrew Newberry  
 Project Number: [none]  
 Project: Noble - UPV #23-0214

CROSS REFERENCE REPORT

Sample ID	Laboratory ID	Matrix	Date Sampled	Date Received
WH-SS-01@6'	Y401684-01	Soil	January 26, 2024 10:46	01/26/2024 16:28
WH-SS-02@6'	Y401684-02	Soil	January 26, 2024 10:48	01/26/2024 16:28
WH-SS-03@6'	Y401684-03	Soil	January 26, 2024 10:50	01/26/2024 16:28
WH-SS-04@6'	Y401684-04	Soil	January 26, 2024 10:52	01/26/2024 16:28
WH-FS-01@7'	Y401684-05	Soil	January 26, 2024 10:54	01/26/2024 16:28
Background-01@2'	Y401684-06	Soil	January 26, 2024 10:56	01/26/2024 16:28

Chain of Custody Modification Request

On 2/7/2024, Garrett Krug from Eagle Environmental contacted Jordan Bynon via email regarding Y401684 requesting that Table 915 Metals be added to all samples. Requested modifications to the chain of custody were made by Jordan Bynon on 2/7/2024.

Origins Laboratory, Inc.



*The results in this report apply to the samples analyzed in accordance with the chain of custody document. This analytical report must be reproduced in its entirety.*



Eagle Environmental Consulting, LLC  
 8000 W 44th Ave  
 Wheat Ridge CO 80033

Andrew Newberry  
 Project Number: [none]  
 Project: Noble - UPV #23-0214

Origins Laboratory

F-012207-01-R1  
 Effective Date: 01/09/12

**Sample Receipt Checklist**

Origins Work Order: 1400004 Client: Eagle  
 Client Project ID: UPV 23-0214  
 Checklist Completed by: EHS Shipped Via: HD  
 Date/time completed: 1/26/24 (UPS, FedEx, Hand Delivered, Pick-up, etc.)  
 Airbill #: N/A  
 Matrix(s) Received: (Check all that apply):  Soil/Solid  Water  Other: \_\_\_\_\_  
 Cooler Number/Temperature: 1/6 °c / \_\_\_\_\_ °c / \_\_\_\_\_ °c (Describe) \_\_\_\_\_ °c  
 Thermometer ID: 7004

Requirement Description	Yes	No	N/A	Comments (if any)
If samples require cooling, was the temperature between 0°C to ≤ 6°C <sup>(1)</sup> ?	<input checked="" type="checkbox"/>			
Is there ice present (document if blue ice is used)	<input checked="" type="checkbox"/>			
Are custody seals present on cooler? (if so, document in comments if they are signed and dated, broken or intact)		<input checked="" type="checkbox"/>		
Are custody seals present on each sample container? (if so, document in comments if they are signed and dated, broken or intact)		<input checked="" type="checkbox"/>		
Were all samples received intact <sup>(1)</sup> ?	<input checked="" type="checkbox"/>			
Was adequate sample volume provided <sup>(1)</sup> ?	<input checked="" type="checkbox"/>			
Are short holding time analytes or samples with HTs due within 48 hours present <sup>(1)</sup> ?		<input checked="" type="checkbox"/>		
Is a chain-of-custody (COC) present and filled out completely <sup>(1)</sup> ?	<input checked="" type="checkbox"/>			
Does the COC agree with the number and type of sample bottles received <sup>(1)</sup> ?	<input checked="" type="checkbox"/>			
Do the sample IDs on the bottle labels match the COC <sup>(1)</sup> ?	<input checked="" type="checkbox"/>			
Is the COC properly relinquished by the client with date and time recorded <sup>(1)</sup> ?	<input checked="" type="checkbox"/>			
For volatiles in water – is there headspace (> ¼ inch bubble) present? <b>If yes, contact client and note in narrative.</b>			<input checked="" type="checkbox"/>	
Are samples preserved that require preservation and was it checked <sup>(1)</sup> ? (note ID of confirmation instrument used in comments) / (preservation is not confirmed for subcontracted analyses in order to insure sample integrity)/(pH <2 for samples preserved with HNO3, HCL, H2SO4) / (pH >10 for samples preserved with NaAsO2+NaOH, ZnAc+NaOH)			<input checked="" type="checkbox"/>	
Additional Comments (if any):				

<sup>(1)</sup>If NO, then contact the client before proceeding with analysis and note, date/time and person contacted as well as the corrective action to in the additional comments (above) and the case narrative.

Reviewed by (Project Manager) [Signature] Date/Time Reviewed 1/30/24

Origins Laboratory, Inc.

[Signature]

The results in this report apply to the samples analyzed in accordance with the chain of custody document. This analytical report must be reproduced in its entirety.

Eagle Environmental Consulting, LLC  
 8000 W 44th Ave  
 Wheat Ridge CO 80033

Andrew Newberry  
 Project Number: [none]  
 Project: Noble - UPV #23-0214

**WH-SS-01@6'**

**1/26/2024 10:46:00AM**

Analyte	Result	Min Detection Limit	Reporting Limit	Units	Dilution	Batch	Prepared	Analyzed	Notes
---------	--------	---------------------	-----------------	-------	----------	-------	----------	----------	-------

**Origins Laboratory, Inc.**  
**Y401684-01 (Soil)**

**Boron (DTPA Sorbitol)**

Boron	0.801		0.0991	mg/L	1	B4A3110	01/31/2024	02/01/2024	
-------	-------	--	--------	------	---	---------	------------	------------	--

**DRO/ORO by EPA 8015D**

Diesel (C10-C28)	938		25.0	mg/kg	1	B4A3002	01/30/2024	02/03/2024	
Residual Range Organics (C28-C40)	444		100	"	"	"	"	"	

Surrogate: o-Terphenyl	106 %		50-150			"	"	"	
------------------------	-------	--	--------	--	--	---	---	---	--

**GBTEX+TMBs by 8260D**

1,2,4-Trimethylbenzene	0.0842		0.00200	mg/kg	1	B4A2922	01/29/2024	01/29/2024	
1,3,5-Trimethylbenzene	0.268		0.00200	"	"	"	"	"	
Benzene	ND		0.00200	"	"	"	"	"	U
Ethylbenzene	0.0341		0.00200	"	"	"	"	"	
Naphthalene	0.0216		0.00380	"	"	"	"	"	
Toluene	0.00714		0.00200	"	"	"	"	"	
Xylenes, total	0.243		0.00200	"	"	"	"	"	
Gasoline Range Hydrocarbons	1050		50.0	"	250	"	"	02/02/2024	

Surrogate: 1,2-Dichloroethane-d4	115 %		70-130			"	"	01/29/2024	
Surrogate: Toluene-d8	125 %		70-130			"	"	"	

Origins Laboratory, Inc.



The results in this report apply to the samples analyzed in accordance with the chain of custody document. This analytical report must be reproduced in its entirety.

Eagle Environmental Consulting, LLC  
 8000 W 44th Ave  
 Wheat Ridge CO 80033

Andrew Newberry  
 Project Number: [none]  
 Project: Noble - UPV #23-0214

**WH-SS-01@6'**

**1/26/2024 10:46:00AM**

Analyte	Result	Min Detection Limit	Reporting Limit	Units	Dilution	Batch	Prepared	Analyzed	Notes
---------	--------	---------------------	-----------------	-------	----------	-------	----------	----------	-------

**Origins Laboratory, Inc.**  
**Y401684-01 (Soil)**

**GBTEX+TMBs by 8260D**

Surrogate: 4-Bromofluorobenzene	98.7 %		70-130			B4A29 22	01/29/2024	01/29/2024	
---------------------------------	--------	--	--------	--	--	-------------	------------	------------	--

**Metals by Saturated Paste by EPA 6010**

Calcium	6.47	0.499	meq/L	10	[CALC]		01/30/2024	01/31/2024	
Magnesium	2.50	0.823	"	"	"	"	"	"	
Sodium	5.70	0.435	"	"	"	"	"	"	

**PAH by EPA 8270E**

1-Methylnaphthalene	1.63	0.020	mg/kg	10	B4A3028		01/30/2024	02/06/2024	
2-Methylnaphthalene	1.73	0.020	"	"	"	"	"	"	
Acenaphthene	0.243	0.020	"	1	"	"	"	02/02/2024	
Anthracene	ND	0.020	"	"	"	"	"	"	U
Benzo (a) anthracene	ND	0.005	"	"	"	"	"	"	U
Benzo (a) pyrene	ND	0.020	"	"	"	"	"	"	U
Benzo (b) fluoranthene	ND	0.020	"	"	"	"	"	"	U
Benzo (k) fluoranthene	ND	0.020	"	"	"	"	"	"	U
Chrysene	ND	0.020	"	"	"	"	"	"	U
Dibenz (a,h) anthracene	ND	0.020	"	"	"	"	"	"	U
Fluoranthene	ND	0.020	"	"	"	"	"	"	U
Fluorene	0.340	0.020	"	"	"	"	"	"	

Origins Laboratory, Inc.



The results in this report apply to the samples analyzed in accordance with the chain of custody document. This analytical report must be reproduced in its entirety.

Eagle Environmental Consulting, LLC  
 8000 W 44th Ave  
 Wheat Ridge CO 80033

Andrew Newberry  
 Project Number: [none]  
 Project: Noble - UPV #23-0214

**WH-SS-01@6'**

**1/26/2024 10:46:00AM**

Analyte	Result	Min Detection Limit	Reporting Limit	Units	Dilution	Batch	Prepared	Analyzed	Notes
---------	--------	---------------------	-----------------	-------	----------	-------	----------	----------	-------

**Origins Laboratory, Inc.**  
**Y401684-01 (Soil)**

**PAH by EPA 8270E**

Indeno (1,2,3-cd) pyrene	ND		0.020	mg/kg	1	B4A3028	01/30/2024	02/02/2024	U
Pyrene	ND		0.020	"	"	"	"	"	U

Surrogate: Fluorene-d10	97.4 %		60-130			"	"	"	
Surrogate: Anthracene-d10	102 %		60-130			"	"	"	
Surrogate: Pyrene-d10	91.1 %		60-130			"	"	"	
Surrogate: Benzo (a) pyrene-d12	99.6 %		60-130			"	"	"	

**pH in Soil by 9045D**

pH	7.93			pH Units	1	B4A3019	01/30/2024	01/31/2024	
----	------	--	--	----------	---	---------	------------	------------	--

**SAR by 20B Saturated Paste**

SAR	2.69		0.0100	SAR	1	B4A3014	01/30/2024	01/31/2024	
-----	------	--	--------	-----	---	---------	------------	------------	--

**Specific Conductance Mod. 9050A**

Specific Conductance (EC)	1.36		0.00500	mmhos/cm	1	B4A3019	01/30/2024	01/31/2024	
---------------------------	------	--	---------	----------	---	---------	------------	------------	--

**Table 915 metals by EPA 6020B**

Arsenic	4.14		0.0859	mg/kg	10	B4B0733	02/07/2024	02/12/2024	
Barium	124		8.59	"	"	"	"	"	

Origins Laboratory, Inc.



The results in this report apply to the samples analyzed in accordance with the chain of custody document. This analytical report must be reproduced in its entirety.

Eagle Environmental Consulting, LLC  
 8000 W 44th Ave  
 Wheat Ridge CO 80033

Andrew Newberry  
 Project Number: [none]  
 Project: Noble - UPV #23-0214

**WH-SS-01@6'**

**1/26/2024 10:46:00AM**

Analyte	Result	Min Detection Limit	Reporting Limit	Units	Dilution	Batch	Prepared	Analyzed	Notes
---------	--------	---------------------	-----------------	-------	----------	-------	----------	----------	-------

**Origins Laboratory, Inc.**  
**Y401684-01 (Soil)**

**Table 915 metals by EPA 6020B**

Cadmium	0.218		0.0859	mg/kg	10	B4B0733	02/07/2024	02/12/2024	
Copper	15.8		8.59	"	"	"	"	"	
Lead	12.8		0.859	"	"	"	"	"	
Nickel	10.5		0.859	"	"	"	"	"	
Selenium	0.176		0.0859	"	"	"	"	"	
Silver	ND		0.0859	"	"	"	"	"	
Zinc	50.7		8.59	"	"	"	"	"	

**Total Metals by 7196A**

Chromium, Hexavalent	ND	0.244	0.5	mg/Kg	1	L732878	01/26/2024	02/15/2024	
----------------------	----	-------	-----	-------	---	---------	------------	------------	--

Origins Laboratory, Inc.



*The results in this report apply to the samples analyzed in accordance with the chain of custody document. This analytical report must be reproduced in its entirety.*

Eagle Environmental Consulting, LLC  
 8000 W 44th Ave  
 Wheat Ridge CO 80033

Andrew Newberry  
 Project Number: [none]  
 Project: Noble - UPV #23-0214

**WH-SS-02@6'**

**1/26/2024 10:48:00AM**

Analyte	Result	Min Detection Limit	Reporting Limit	Units	Dilution	Batch	Prepared	Analyzed	Notes
---------	--------	---------------------	-----------------	-------	----------	-------	----------	----------	-------

**Origins Laboratory, Inc.**  
**Y401684-02 (Soil)**

**Boron (DTPA Sorbitol)**

Boron	0.771		0.0996	mg/L	1	B4A3110	01/31/2024	02/01/2024	
-------	-------	--	--------	------	---	---------	------------	------------	--

**DRO/ORO by EPA 8015D**

Diesel (C10-C28)	82.3		25.0	mg/kg	1	B4A3002	01/30/2024	02/03/2024	
Residual Range Organics (C28-C40)	ND		100	"	"	"	"	"	U

Surrogate: <i>o</i> -Terphenyl	87.7 %		50-150			"	"	"	
--------------------------------	--------	--	--------	--	--	---	---	---	--

**GBTEX+TMBs by 8260D**

1,2,4-Trimethylbenzene	0.00440		0.00200	mg/kg	1	B4A2922	01/29/2024	01/30/2024	
1,3,5-Trimethylbenzene	0.0253		0.00200	"	"	"	"	"	
Benzene	ND		0.00200	"	"	"	"	"	U
Ethylbenzene	0.00290		0.00200	"	"	"	"	"	
Naphthalene	ND		0.00380	"	"	"	"	"	U
Toluene	ND		0.00200	"	"	"	"	"	U
Xylenes, total	0.00536		0.00200	"	"	"	"	"	
Gasoline Range Hydrocarbons	5.51		0.200	"	"	"	"	"	

Surrogate: 1,2-Dichloroethane-d4	106 %		70-130			"	"	"	
----------------------------------	-------	--	--------	--	--	---	---	---	--

Origins Laboratory, Inc.



The results in this report apply to the samples analyzed in accordance with the chain of custody document. This analytical report must be reproduced in its entirety.

Eagle Environmental Consulting, LLC  
 8000 W 44th Ave  
 Wheat Ridge CO 80033

Andrew Newberry  
 Project Number: [none]  
 Project: Noble - UPV #23-0214

**WH-SS-02@6'**

**1/26/2024 10:48:00AM**

Analyte	Result	Min Detection Limit	Reporting Limit	Units	Dilution	Batch	Prepared	Analyzed	Notes
---------	--------	---------------------	-----------------	-------	----------	-------	----------	----------	-------

**Origins Laboratory, Inc.**  
**Y401684-02 (Soil)**

**GBTEX+TMBs by 8260D**

Surrogate: Toluene-d8	98.6 %		70-130			B4A29 22	01/29/2024	01/30/2024	
Surrogate: 4-Bromofluorobenzene	96.0 %		70-130			"	"	"	

**Metals by Saturated Paste by EPA 6010**

Calcium	4.74	0.499	meq/L	10	[CALC]		01/30/2024	01/31/2024	
Magnesium	1.78	0.823	"	"	"	"	"	"	
Sodium	5.45	0.435	"	"	"	"	"	"	

**PAH by EPA 8270E**

1-Methylnaphthalene	0.097	0.002	mg/kg	1	B4A3028		01/30/2024	02/02/2024	
2-Methylnaphthalene	0.142	0.002	"	"	"	"	"	"	
Acenaphthene	ND	0.020	"	"	"	"	"	"	U
Anthracene	ND	0.020	"	"	"	"	"	"	U
Benzo (a) anthracene	ND	0.005	"	"	"	"	"	"	U
Benzo (a) pyrene	ND	0.020	"	"	"	"	"	"	U
Benzo (b) fluoranthene	ND	0.020	"	"	"	"	"	"	U
Benzo (k) fluoranthene	ND	0.020	"	"	"	"	"	"	U
Chrysene	ND	0.020	"	"	"	"	"	"	U
Dibenz (a,h) anthracene	ND	0.020	"	"	"	"	"	"	U
Fluoranthene	ND	0.020	"	"	"	"	"	"	U

Origins Laboratory, Inc.



The results in this report apply to the samples analyzed in accordance with the chain of custody document. This analytical report must be reproduced in its entirety.

Eagle Environmental Consulting, LLC  
 8000 W 44th Ave  
 Wheat Ridge CO 80033

Andrew Newberry  
 Project Number: [none]  
 Project: Noble - UPV #23-0214

**WH-SS-02@6'**

**1/26/2024 10:48:00AM**

Analyte	Result	Min Detection Limit	Reporting Limit	Units	Dilution	Batch	Prepared	Analyzed	Notes
---------	--------	---------------------	-----------------	-------	----------	-------	----------	----------	-------

**Origins Laboratory, Inc.**  
**Y401684-02 (Soil)**

**PAH by EPA 8270E**

Fluorene	ND		0.020	mg/kg	1	B4A3028	01/30/2024	02/02/2024	U
Indeno (1,2,3-cd) pyrene	ND		0.020	"	"	"	"	"	U
Pyrene	ND		0.020	"	"	"	"	"	U

Surrogate: Fluorene-d10	99.6 %		60-130			"	"	"	
Surrogate: Anthracene-d10	96.4 %		60-130			"	"	"	
Surrogate: Pyrene-d10	98.8 %		60-130			"	"	"	
Surrogate: Benzo (a) pyrene-d12	99.5 %		60-130			"	"	"	

**pH in Soil by 9045D**

pH	8.30			pH Units	1	B4A3019	01/30/2024	01/31/2024	
----	------	--	--	----------	---	---------	------------	------------	--

**SAR by 20B Saturated Paste**

SAR	3.02		0.0100	SAR	1	B4A3014	01/30/2024	01/31/2024	
-----	------	--	--------	-----	---	---------	------------	------------	--

**Specific Conductance Mod. 9050A**

Specific Conductance (EC)	1.04		0.00500	mmhos/cm	1	B4A3019	01/30/2024	01/31/2024	
---------------------------	------	--	---------	----------	---	---------	------------	------------	--

**Table 915 metals by EPA 6020B**

Arsenic	5.11		0.0852	mg/kg	10	B4B0733	02/07/2024	02/12/2024	
---------	------	--	--------	-------	----	---------	------------	------------	--

Origins Laboratory, Inc.



The results in this report apply to the samples analyzed in accordance with the chain of custody document. This analytical report must be reproduced in its entirety.

Eagle Environmental Consulting, LLC  
 8000 W 44th Ave  
 Wheat Ridge CO 80033

Andrew Newberry  
 Project Number: [none]  
 Project: Noble - UPV #23-0214

**WH-SS-02@6'**

**1/26/2024 10:48:00AM**

Analyte	Result	Min Detection Limit	Reporting Limit	Units	Dilution	Batch	Prepared	Analyzed	Notes
---------	--------	---------------------	-----------------	-------	----------	-------	----------	----------	-------

**Origins Laboratory, Inc.**  
**Y401684-02 (Soil)**

**Table 915 metals by EPA 6020B**

Barium	157		8.52	mg/kg	10	B4B0733	02/07/2024	02/12/2024	
Cadmium	0.228		0.0852	"	"	"	"	"	
Copper	18.0		8.52	"	"	"	"	"	
Lead	13.9		0.852	"	"	"	"	"	
Nickel	14.9		0.852	"	"	"	"	"	
Selenium	0.207		0.0852	"	"	"	"	"	
Silver	ND		0.0852	"	"	"	"	"	
Zinc	69.0		8.52	"	"	"	"	"	

**Total Metals by 7196A**

Chromium, Hexavalent	ND	0.244	0.5	mg/Kg	1	L732880	01/26/2024	02/15/2024	
----------------------	----	-------	-----	-------	---	---------	------------	------------	--

Origins Laboratory, Inc.



*The results in this report apply to the samples analyzed in accordance with the chain of custody document. This analytical report must be reproduced in its entirety.*

Eagle Environmental Consulting, LLC  
 8000 W 44th Ave  
 Wheat Ridge CO 80033

Andrew Newberry  
 Project Number: [none]  
 Project: Noble - UPV #23-0214

**WH-SS-03@6'**

**1/26/2024 10:50:00AM**

Analyte	Result	Min Detection Limit	Reporting Limit	Units	Dilution	Batch	Prepared	Analyzed	Notes
---------	--------	---------------------	-----------------	-------	----------	-------	----------	----------	-------

**Origins Laboratory, Inc.**  
**Y401684-03 (Soil)**

**Boron (DTPA Sorbitol)**

Boron	1.04		0.101	mg/L	1	B4A3110	01/31/2024	02/01/2024	
-------	------	--	-------	------	---	---------	------------	------------	--

**DRO/ORO by EPA 8015D**

Diesel (C10-C28)	1030		25.0	mg/kg	1	B4A3002	01/30/2024	02/03/2024	
Residual Range Organics (C28-C40)	474		100	"	"	"	"	"	

Surrogate: o-Terphenyl	91.6 %		50-150			"	"	"	
------------------------	--------	--	--------	--	--	---	---	---	--

**GBTEX+TMBs by 8260D**

1,2,4-Trimethylbenzene	0.00784		0.00200	mg/kg	1	B4A2922	01/29/2024	01/30/2024	
1,3,5-Trimethylbenzene	0.0605		0.00200	"	"	"	"	"	
Benzene	ND		0.00200	"	"	"	"	"	U
Ethylbenzene	0.00234		0.00200	"	"	"	"	"	
Naphthalene	ND		0.00380	"	"	"	"	"	U
Toluene	0.00232		0.00200	"	"	"	"	"	
Xylenes, total	0.0531		0.00200	"	"	"	"	"	
Gasoline Range Hydrocarbons	301		5.00	"	25	"	"	02/02/2024	

Surrogate: 1,2-Dichloroethane-d4	105 %		70-130			"	"	01/30/2024	
Surrogate: Toluene-d8	101 %		70-130			"	"	"	

Origins Laboratory, Inc.



The results in this report apply to the samples analyzed in accordance with the chain of custody document. This analytical report must be reproduced in its entirety.

Eagle Environmental Consulting, LLC  
 8000 W 44th Ave  
 Wheat Ridge CO 80033

Andrew Newberry  
 Project Number: [none]  
 Project: Noble - UPV #23-0214

**WH-SS-03@6'**

**1/26/2024 10:50:00AM**

Analyte	Result	Min Detection Limit	Reporting Limit	Units	Dilution	Batch	Prepared	Analyzed	Notes
---------	--------	---------------------	-----------------	-------	----------	-------	----------	----------	-------

**Origins Laboratory, Inc.**  
**Y401684-03 (Soil)**

**GBTEX+TMBs by 8260D**

Surrogate: 4-Bromofluorobenzene	106 %	70-130				B4A29 22	01/29/2024	01/30/2024	
---------------------------------	-------	--------	--	--	--	-------------	------------	------------	--

**Metals by Saturated Paste by EPA 6010**

Calcium	14.2	0.499	meq/L	10	[CALC]		01/30/2024	01/31/2024	
Magnesium	4.35	0.823	"	"	"	"	"	"	
Sodium	6.85	0.435	"	"	"	"	"	"	

**PAH by EPA 8270E**

1-Methylnaphthalene	0.769	0.002	mg/kg	1	B4A3028		01/30/2024	02/02/2024	
2-Methylnaphthalene	0.926	0.002	"	"	"	"	"	"	
Acenaphthene	0.129	0.020	"	"	"	"	"	"	
Anthracene	0.026	0.020	"	"	"	"	"	"	
Benzo (a) anthracene	ND	0.005	"	"	"	"	"	"	U
Benzo (a) pyrene	ND	0.020	"	"	"	"	"	"	U
Benzo (b) fluoranthene	ND	0.020	"	"	"	"	"	"	U
Benzo (k) fluoranthene	ND	0.020	"	"	"	"	"	"	U
Chrysene	ND	0.020	"	"	"	"	"	"	U
Dibenz (a,h) anthracene	ND	0.020	"	"	"	"	"	"	U
Fluoranthene	ND	0.020	"	"	"	"	"	"	U
Fluorene	0.222	0.020	"	"	"	"	"	"	
Indeno (1,2,3-cd) pyrene	ND	0.020	"	"	"	"	"	"	U

Origins Laboratory, Inc.



The results in this report apply to the samples analyzed in accordance with the chain of custody document. This analytical report must be reproduced in its entirety.

Eagle Environmental Consulting, LLC  
 8000 W 44th Ave  
 Wheat Ridge CO 80033

Andrew Newberry  
 Project Number: [none]  
 Project: Noble - UPV #23-0214

**WH-SS-03@6'**

**1/26/2024 10:50:00AM**

Analyte	Result	Min Detection Limit	Reporting Limit	Units	Dilution	Batch	Prepared	Analyzed	Notes
---------	--------	---------------------	-----------------	-------	----------	-------	----------	----------	-------

**Origins Laboratory, Inc.**  
**Y401684-03 (Soil)**

**PAH by EPA 8270E**

Pyrene	ND		0.020	mg/kg	1	B4A3028	01/30/2024	02/02/2024	U
--------	----	--	-------	-------	---	---------	------------	------------	---

Surrogate: Fluorene-d10	97.4 %		60-130			"	"	"	
Surrogate: Anthracene-d10	103 %		60-130			"	"	"	
Surrogate: Pyrene-d10	93.1 %		60-130			"	"	"	
Surrogate: Benzo (a) pyrene-d12	104 %		60-130			"	"	"	

**pH in Soil by 9045D**

pH	8.04			pH Units	1	B4A3019	01/30/2024	01/31/2024	
----	------	--	--	----------	---	---------	------------	------------	--

**SAR by 20B Saturated Paste**

SAR	2.25		0.0100	SAR	1	B4A3014	01/30/2024	01/31/2024	
-----	------	--	--------	-----	---	---------	------------	------------	--

**Specific Conductance Mod. 9050A**

Specific Conductance (EC)	1.98		0.00500	mmhos/cm	1	B4A3019	01/30/2024	01/31/2024	
---------------------------	------	--	---------	----------	---	---------	------------	------------	--

**Table 915 metals by EPA 6020B**

Arsenic	5.61		0.0882	mg/kg	10	B4B0733	02/07/2024	02/12/2024	
Barium	157		8.82	"	"	"	"	"	
Cadmium	0.245		0.0882	"	"	"	"	"	

Origins Laboratory, Inc.



The results in this report apply to the samples analyzed in accordance with the chain of custody document. This analytical report must be reproduced in its entirety.

Eagle Environmental Consulting, LLC  
 8000 W 44th Ave  
 Wheat Ridge CO 80033

Andrew Newberry  
 Project Number: [none]  
 Project: Noble - UPV #23-0214

**WH-SS-03@6'**

**1/26/2024 10:50:00AM**

Analyte	Result	Min Detection Limit	Reporting Limit	Units	Dilution	Batch	Prepared	Analyzed	Notes
---------	--------	---------------------	-----------------	-------	----------	-------	----------	----------	-------

**Origins Laboratory, Inc.**  
**Y401684-03 (Soil)**

**Table 915 metals by EPA 6020B**

Copper	19.8		8.82	mg/kg	10	B4B0733	02/07/2024	02/12/2024	
Lead	20.2		0.882	"	"	"	"	"	
Nickel	14.8		0.882	"	"	"	"	"	
Selenium	0.411		0.0882	"	"	"	"	"	
Silver	ND		0.0882	"	"	"	"	"	
Zinc	73.4		8.82	"	"	"	"	"	

**Total Metals by 7196A**

Chromium, Hexavalent	ND	0.244	0.5	mg/Kg	1	L732880	01/26/2024	02/15/2024	
----------------------	----	-------	-----	-------	---	---------	------------	------------	--

Origins Laboratory, Inc.



*The results in this report apply to the samples analyzed in accordance with the chain of custody document. This analytical report must be reproduced in its entirety.*

Eagle Environmental Consulting, LLC  
 8000 W 44th Ave  
 Wheat Ridge CO 80033

Andrew Newberry  
 Project Number: [none]  
 Project: Noble - UPV #23-0214

**WH-SS-04@6'**

**1/26/2024 10:52:00AM**

Analyte	Result	Min Detection Limit	Reporting Limit	Units	Dilution	Batch	Prepared	Analyzed	Notes
---------	--------	---------------------	-----------------	-------	----------	-------	----------	----------	-------

**Origins Laboratory, Inc.**  
**Y401684-04 (Soil)**

**Boron (DTPA Sorbitol)**

Boron	0.780		0.100	mg/L	1	B4A3110	01/31/2024	02/01/2024	
-------	-------	--	-------	------	---	---------	------------	------------	--

**DRO/ORO by EPA 8015D**

Diesel (C10-C28)	248		25.0	mg/kg	1	B4A3002	01/30/2024	02/03/2024	
Residual Range Organics (C28-C40)	117		100	"	"	"	"	"	

Surrogate: o-Terphenyl	93.9 %		50-150			"	"	"	
------------------------	--------	--	--------	--	--	---	---	---	--

**GBTEX+TMBs by 8260D**

1,2,4-Trimethylbenzene	0.0114		0.00200	mg/kg	1	B4A2922	01/29/2024	01/30/2024	
1,3,5-Trimethylbenzene	0.0496		0.00200	"	"	"	"	"	
Benzene	ND		0.00200	"	"	"	"	"	U
Ethylbenzene	0.00282		0.00200	"	"	"	"	"	
Naphthalene	0.00432		0.00380	"	"	"	"	"	
Toluene	ND		0.00200	"	"	"	"	"	U
Xylenes, total	0.00862		0.00200	"	"	"	"	"	
Gasoline Range Hydrocarbons	106		5.00	"	25	"	"	02/02/2024	

Surrogate: 1,2-Dichloroethane-d4	107 %		70-130			"	"	01/30/2024	
Surrogate: Toluene-d8	103 %		70-130			"	"	"	

Origins Laboratory, Inc.



The results in this report apply to the samples analyzed in accordance with the chain of custody document. This analytical report must be reproduced in its entirety.

Eagle Environmental Consulting, LLC  
 8000 W 44th Ave  
 Wheat Ridge CO 80033

Andrew Newberry  
 Project Number: [none]  
 Project: Noble - UPV #23-0214

**WH-SS-04@6'**

**1/26/2024 10:52:00AM**

Analyte	Result	Min Detection Limit	Reporting Limit	Units	Dilution	Batch	Prepared	Analyzed	Notes
---------	--------	---------------------	-----------------	-------	----------	-------	----------	----------	-------

**Origins Laboratory, Inc.**  
**Y401684-04 (Soil)**

**GBTEX+TMBs by 8260D**

Surrogate: 4-Bromofluorobenzene	113 %	70-130				B4A29 22	01/29/2024	01/30/2024	
---------------------------------	-------	--------	--	--	--	-------------	------------	------------	--

**Metals by Saturated Paste by EPA 6010**

Calcium	11.1	0.499	meq/L	10	[CALC]		01/30/2024	01/31/2024	
Magnesium	3.39	0.823	"	"	"	"	"	"	
Sodium	6.34	0.435	"	"	"	"	"	"	

**PAH by EPA 8270E**

1-Methylnaphthalene	0.593	0.002	mg/kg	1	B4A3028		01/30/2024	02/02/2024	
2-Methylnaphthalene	1.61	0.020	"	10	"	"	"	02/07/2024	
Acenaphthene	0.095	0.020	"	1	"	"	"	02/02/2024	
Anthracene	ND	0.020	"	"	"	"	"	"	U
Benzo (a) anthracene	ND	0.005	"	"	"	"	"	"	U
Benzo (a) pyrene	ND	0.020	"	"	"	"	"	"	U
Benzo (b) fluoranthene	ND	0.020	"	"	"	"	"	"	U
Benzo (k) fluoranthene	ND	0.020	"	"	"	"	"	"	U
Chrysene	ND	0.020	"	"	"	"	"	"	U
Dibenz (a,h) anthracene	ND	0.020	"	"	"	"	"	"	U
Fluoranthene	ND	0.020	"	"	"	"	"	"	U
Fluorene	0.123	0.020	"	"	"	"	"	"	

Origins Laboratory, Inc.



The results in this report apply to the samples analyzed in accordance with the chain of custody document. This analytical report must be reproduced in its entirety.

Eagle Environmental Consulting, LLC  
 8000 W 44th Ave  
 Wheat Ridge CO 80033

Andrew Newberry  
 Project Number: [none]  
 Project: Noble - UPV #23-0214

**WH-SS-04@6'**

**1/26/2024 10:52:00AM**

Analyte	Result	Min Detection Limit	Reporting Limit	Units	Dilution	Batch	Prepared	Analyzed	Notes
---------	--------	---------------------	-----------------	-------	----------	-------	----------	----------	-------

**Origins Laboratory, Inc.**  
**Y401684-04 (Soil)**

**PAH by EPA 8270E**

Indeno (1,2,3-cd) pyrene	ND		0.020	mg/kg	1	B4A3028	01/30/2024	02/02/2024	U
Pyrene	ND		0.020	"	"	"	"	"	U

Surrogate: Fluorene-d10	97.6 %		60-130			"	"	"	
Surrogate: Anthracene-d10	101 %		60-130			"	"	"	
Surrogate: Pyrene-d10	95.8 %		60-130			"	"	"	
Surrogate: Benzo (a) pyrene-d12	101 %		60-130			"	"	"	

**pH in Soil by 9045D**

pH	8.13			pH Units	1	B4A3019	01/30/2024	01/31/2024	
----	------	--	--	----------	---	---------	------------	------------	--

**SAR by 20B Saturated Paste**

SAR	2.35		0.0100	SAR	1	B4A3014	01/30/2024	01/31/2024	
-----	------	--	--------	-----	---	---------	------------	------------	--

**Specific Conductance Mod. 9050A**

Specific Conductance (EC)	1.24		0.00500	mmhos/cm	1	B4A3019	01/30/2024	01/31/2024	
---------------------------	------	--	---------	----------	---	---------	------------	------------	--

**Table 915 metals by EPA 6020B**

Arsenic	6.39		0.0941	mg/kg	10	B4B0733	02/07/2024	02/12/2024	
Barium	204		9.41	"	"	"	"	"	

Origins Laboratory, Inc.



The results in this report apply to the samples analyzed in accordance with the chain of custody document. This analytical report must be reproduced in its entirety.

Eagle Environmental Consulting, LLC  
 8000 W 44th Ave  
 Wheat Ridge CO 80033

Andrew Newberry  
 Project Number: [none]  
 Project: Noble - UPV #23-0214

**WH-SS-04@6'**

**1/26/2024 10:52:00AM**

Analyte	Result	Min Detection Limit	Reporting Limit	Units	Dilution	Batch	Prepared	Analyzed	Notes
---------	--------	---------------------	-----------------	-------	----------	-------	----------	----------	-------

**Origins Laboratory, Inc.**  
**Y401684-04 (Soil)**

**Table 915 metals by EPA 6020B**

Cadmium	0.288		0.0941	mg/kg	10	B4B0733	02/07/2024	02/12/2024	
Copper	21.9		9.41	"	"	"	"	"	
Lead	17.6		0.941	"	"	"	"	"	
Nickel	16.9		0.941	"	"	"	"	"	
Selenium	0.245		0.0941	"	"	"	"	"	
Silver	ND		0.0941	"	"	"	"	"	
Zinc	80.4		9.41	"	"	"	"	"	

**Total Metals by 7196A**

Chromium, Hexavalent	ND	0.245	0.503	mg/Kg	1	L732880	01/26/2024	02/15/2024	
----------------------	----	-------	-------	-------	---	---------	------------	------------	--

Origins Laboratory, Inc.



*The results in this report apply to the samples analyzed in accordance with the chain of custody document. This analytical report must be reproduced in its entirety.*

Eagle Environmental Consulting, LLC  
 8000 W 44th Ave  
 Wheat Ridge CO 80033

Andrew Newberry  
 Project Number: [none]  
 Project: Noble - UPV #23-0214

**WH-FS-01@7'**

**1/26/2024 10:54:00AM**

Analyte	Result	Min Detection Limit	Reporting Limit	Units	Dilution	Batch	Prepared	Analyzed	Notes
---------	--------	---------------------	-----------------	-------	----------	-------	----------	----------	-------

**Origins Laboratory, Inc.**  
**Y401684-05 (Soil)**

**Boron (DTPA Sorbitol)**

Boron	0.874		0.101	mg/L	1	B4A3110	01/31/2024	02/01/2024	
-------	-------	--	-------	------	---	---------	------------	------------	--

**DRO/ORO by EPA 8015D**

Diesel (C10-C28)	716		25.0	mg/kg	1	B4A3002	01/30/2024	02/03/2024	
Residual Range Organics (C28-C40)	381		100	"	"	"	"	"	

Surrogate: o-Terphenyl	112 %		50-150			"	"	"	
------------------------	-------	--	--------	--	--	---	---	---	--

**GBTEX+TMBs by 8260D**

1,2,4-Trimethylbenzene	0.0851		0.00200	mg/kg	1	B4A2922	01/29/2024	01/30/2024	
1,3,5-Trimethylbenzene	0.0604		0.00200	"	"	"	"	"	
Benzene	ND		0.00200	"	"	"	"	"	U
Ethylbenzene	ND		0.00200	"	"	"	"	"	U
Naphthalene	ND		0.00380	"	"	"	"	"	U
Toluene	ND		0.00200	"	"	"	"	"	U
Xylenes, total	0.0383		0.00200	"	"	"	"	"	
Gasoline Range Hydrocarbons	19.1		0.200	"	"	"	"	"	

Surrogate: 1,2-Dichloroethane-d4	107 %		70-130			"	"	"	
----------------------------------	-------	--	--------	--	--	---	---	---	--

Origins Laboratory, Inc.



The results in this report apply to the samples analyzed in accordance with the chain of custody document. This analytical report must be reproduced in its entirety.

Eagle Environmental Consulting, LLC  
 8000 W 44th Ave  
 Wheat Ridge CO 80033

Andrew Newberry  
 Project Number: [none]  
 Project: Noble - UPV #23-0214

**WH-FS-01@7'**

**1/26/2024 10:54:00AM**

Analyte	Result	Min Detection Limit	Reporting Limit	Units	Dilution	Batch	Prepared	Analyzed	Notes
---------	--------	---------------------	-----------------	-------	----------	-------	----------	----------	-------

**Origins Laboratory, Inc.**  
**Y401684-05 (Soil)**

**GBTEX+TMBs by 8260D**

Surrogate: Toluene-d8	98.1 %		70-130			B4A29 22	01/29/2024	01/30/2024	
Surrogate: 4-Bromofluorobenzene	105 %		70-130			"	"	"	

**Metals by Saturated Paste by EPA 6010**

Calcium	5.91	0.499	meq/L	10	[CALC]		01/30/2024	01/31/2024	
Magnesium	2.14	0.823	"	"	"	"	"	"	
Sodium	5.27	0.435	"	"	"	"	"	"	

**PAH by EPA 8270E**

1-Methylnaphthalene	0.324	0.002	mg/kg	1	B4A3028		01/30/2024	02/02/2024	
2-Methylnaphthalene	0.270	0.002	"	"	"	"	"	"	
Acenaphthene	0.062	0.020	"	"	"	"	"	"	
Anthracene	ND	0.020	"	"	"	"	"	"	U
Benzo (a) anthracene	ND	0.005	"	"	"	"	"	"	U
Benzo (a) pyrene	ND	0.020	"	"	"	"	"	"	U
Benzo (b) fluoranthene	ND	0.020	"	"	"	"	"	"	U
Benzo (k) fluoranthene	ND	0.020	"	"	"	"	"	"	U
Chrysene	ND	0.020	"	"	"	"	"	"	U
Dibenz (a,h) anthracene	ND	0.020	"	"	"	"	"	"	U
Fluoranthene	ND	0.020	"	"	"	"	"	"	U
Fluorene	0.082	0.020	"	"	"	"	"	"	

Origins Laboratory, Inc.



The results in this report apply to the samples analyzed in accordance with the chain of custody document. This analytical report must be reproduced in its entirety.

Eagle Environmental Consulting, LLC  
 8000 W 44th Ave  
 Wheat Ridge CO 80033

Andrew Newberry  
 Project Number: [none]  
 Project: Noble - UPV #23-0214

**WH-FS-01@7'**

**1/26/2024 10:54:00AM**

Analyte	Result	Min Detection Limit	Reporting Limit	Units	Dilution	Batch	Prepared	Analyzed	Notes
---------	--------	---------------------	-----------------	-------	----------	-------	----------	----------	-------

**Origins Laboratory, Inc.**  
**Y401684-05 (Soil)**

**PAH by EPA 8270E**

Indeno (1,2,3-cd) pyrene	ND		0.020	mg/kg	1	B4A3028	01/30/2024	02/02/2024	U
Pyrene	ND		0.020	"	"	"	"	"	U

Surrogate: Fluorene-d10	98.8 %		60-130			"	"	"	
Surrogate: Anthracene-d10	101 %		60-130			"	"	"	
Surrogate: Pyrene-d10	95.7 %		60-130			"	"	"	
Surrogate: Benzo (a) pyrene-d12	102 %		60-130			"	"	"	

**pH in Soil by 9045D**

pH	8.21			pH Units	1	B4A3019	01/30/2024	01/31/2024	
----	------	--	--	----------	---	---------	------------	------------	--

**SAR by 20B Saturated Paste**

SAR	2.63		0.0100	SAR	1	B4A3014	01/30/2024	01/31/2024	
-----	------	--	--------	-----	---	---------	------------	------------	--

**Specific Conductance Mod. 9050A**

Specific Conductance (EC)	1.28		0.00500	mmhos/cm	1	B4A3019	01/30/2024	01/31/2024	
---------------------------	------	--	---------	----------	---	---------	------------	------------	--

**Table 915 metals by EPA 6020B**

Arsenic	4.59		0.0904	mg/kg	10	B4B0733	02/07/2024	02/12/2024	
Barium	124		9.04	"	"	"	"	"	

Origins Laboratory, Inc.



The results in this report apply to the samples analyzed in accordance with the chain of custody document. This analytical report must be reproduced in its entirety.

Eagle Environmental Consulting, LLC  
 8000 W 44th Ave  
 Wheat Ridge CO 80033

Andrew Newberry  
 Project Number: [none]  
 Project: Noble - UPV #23-0214

**WH-FS-01@7'**

**1/26/2024 10:54:00AM**

Analyte	Result	Min Detection Limit	Reporting Limit	Units	Dilution	Batch	Prepared	Analyzed	Notes
---------	--------	---------------------	-----------------	-------	----------	-------	----------	----------	-------

**Origins Laboratory, Inc.**  
**Y401684-05 (Soil)**

**Table 915 metals by EPA 6020B**

Cadmium	0.221		0.0904	mg/kg	10	B4B0733	02/07/2024	02/12/2024	
Copper	17.7		9.04	"	"	"	"	"	
Lead	12.3		0.904	"	"	"	"	"	
Nickel	10.8		0.904	"	"	"	"	"	
Selenium	0.111		0.0904	"	"	"	"	"	
Silver	ND		0.0904	"	"	"	"	"	
Zinc	56.6		9.04	"	"	"	"	"	

**Total Metals by 7196A**

Chromium, Hexavalent	ND	0.244	0.5	mg/Kg	1	L732880	01/26/2024	02/15/2024	
----------------------	----	-------	-----	-------	---	---------	------------	------------	--

Origins Laboratory, Inc.



*The results in this report apply to the samples analyzed in accordance with the chain of custody document. This analytical report must be reproduced in its entirety.*

Eagle Environmental Consulting, LLC  
 8000 W 44th Ave  
 Wheat Ridge CO 80033

Andrew Newberry  
 Project Number: [none]  
 Project: Noble - UPV #23-0214

**Background-01@2'**  
**1/26/2024 10:56:00AM**

Analyte	Result	Min Detection Limit	Reporting Limit	Units	Dilution	Batch	Prepared	Analyzed	Notes
---------	--------	---------------------	-----------------	-------	----------	-------	----------	----------	-------

**Origins Laboratory, Inc.**  
**Y401684-06 (Soil)**

**Boron (DTPA Sorbitol)**

Boron	1.15		0.100	mg/L	1	B4A3110	01/31/2024	02/01/2024	
-------	------	--	-------	------	---	---------	------------	------------	--

**Metals by Saturated Paste by EPA 6010**

Calcium	3.15		0.499	meq/L	10	[CALC]	01/30/2024	01/31/2024	
Magnesium	1.79		0.823	"	"	"	"	"	
Sodium	10.2		0.435	"	"	"	"	"	

**pH in Soil by 9045D**

pH	8.43			pH Units	1	B4A3019	01/30/2024	01/31/2024	
----	------	--	--	----------	---	---------	------------	------------	--

**SAR by 20B Saturated Paste**

SAR	6.47		0.0100	SAR	1	B4A3014	01/30/2024	01/31/2024	
-----	------	--	--------	-----	---	---------	------------	------------	--

**Specific Conductance Mod. 9050A**

Specific Conductance (EC)	1.58		0.00500	mmhos/cm	1	B4A3019	01/30/2024	01/31/2024	
---------------------------	------	--	---------	----------	---	---------	------------	------------	--

**Table 915 metals by EPA 6020B**

Arsenic	2.90		0.0841	mg/kg	10	B4B0733	02/07/2024	02/12/2024	
Barium	79.6		8.41	"	"	"	"	"	
Cadmium	0.189		0.0841	"	"	"	"	"	
Copper	11.5		8.41	"	"	"	"	"	

Origins Laboratory, Inc.



*The results in this report apply to the samples analyzed in accordance with the chain of custody document. This analytical report must be reproduced in its entirety.*

Eagle Environmental Consulting, LLC  
 8000 W 44th Ave  
 Wheat Ridge CO 80033

Andrew Newberry  
 Project Number: [none]  
 Project: Noble - UPV #23-0214

**Background-01@2'**  
**1/26/2024 10:56:00AM**

Analyte	Result	Min Detection Limit	Reporting Limit	Units	Dilution	Batch	Prepared	Analyzed	Notes
---------	--------	---------------------	-----------------	-------	----------	-------	----------	----------	-------

**Origins Laboratory, Inc.**  
**Y401684-06 (Soil)**

**Table 915 metals by EPA 6020B**

Lead	10.2		0.841	mg/kg	10	B4B0733	02/07/2024	02/12/2024	
Nickel	7.65		0.841	"	"	"	"	"	
Selenium	0.211		0.0841	"	"	"	"	"	
Silver	ND		0.0841	"	"	"	"	"	
Zinc	32.3		8.41	"	"	"	"	"	

**Total Metals by 7196A**

Chromium, Hexavalent	ND	0.244	0.5	mg/Kg	1	L732880	01/26/2024	02/15/2024	
----------------------	----	-------	-----	-------	---	---------	------------	------------	--

Origins Laboratory, Inc.



*The results in this report apply to the samples analyzed in accordance with the chain of custody document. This analytical report must be reproduced in its entirety.*

Eagle Environmental Consulting, LLC  
 8000 W 44th Ave  
 Wheat Ridge CO 80033

Andrew Newberry  
 Project Number: [none]  
 Project: Noble - UPV #23-0214

**Volatile Organic Compounds by GC/MS SW846 8260D - Quality Control**  
**Origins Laboratory, Inc.**

Analyte	Result	Reporting Limit	Units	Spike Level	Source Result	%REC	%REC Limits	RPD	RPD Limit	Notes
---------	--------	-----------------	-------	-------------	---------------	------	-------------	-----	-----------	-------

Batch B4A2922 - EPA 5030 (soil)

Blank (B4A2922-BLK1)

Prepared: 01/29/2024 Analyzed: 01/29/2024

1,2,4-Trimethylbenzene	ND	0.00200	mg/kg							U
1,3,5-Trimethylbenzene	ND	0.00200	"							U
Benzene	ND	0.00200	"							U
Ethylbenzene	ND	0.00200	"							U
Naphthalene	ND	0.00380	"							U
Toluene	ND	0.00200	"							U
Xylenes, total	ND	0.00200	"							U
Gasoline Range Hydrocarbons	ND	0.200	"							U
Surrogate: 1,2-Dichloroethane-d4	0.14		"	0.125	111		70-130			
Surrogate: Toluene-d8	0.13		"	0.125	102		70-130			
Surrogate: 4-Bromofluorobenzene	0.11		"	0.125	91.1		70-130			

Origins Laboratory, Inc.



The results in this report apply to the samples analyzed in accordance with the chain of custody document. This analytical report must be reproduced in its entirety.

Eagle Environmental Consulting, LLC  
 8000 W 44th Ave  
 Wheat Ridge CO 80033

Andrew Newberry  
 Project Number: [none]  
 Project: Noble - UPV #23-0214

**Volatile Organic Compounds by GC/MS SW846 8260D - Quality Control**  
**Origins Laboratory, Inc.**

Analyte	Result	Reporting Limit	Units	Spike Level	Source Result	%REC	%REC Limits	RPD	RPD Limit	Notes
---------	--------	-----------------	-------	-------------	---------------	------	-------------	-----	-----------	-------

Batch B4A2922 - EPA 5030 (soil)

**LCS (B4A2922-BS1)**

Prepared: 01/29/2024 Analyzed: 01/29/2024

1,2,4-Trimethylbenzene	0.113	0.00200	mg/kg	0.100		113	70-130			
1,3,5-Trimethylbenzene	0.114	0.00200	"	0.100		114	70-130			
Benzene	0.0961	0.00200	"	0.100		96.1	70-130			
Ethylbenzene	0.106	0.00200	"	0.100		106	70-130			
Naphthalene	0.104	0.00380	"	0.100		104	70-130			
Toluene	0.103	0.00200	"	0.100		103	70-130			
o-Xylene	0.0957	0.00200	"	0.100		95.7	70-130			
m,p-Xylene	0.198	0.00400	"	0.200		98.8	70-130			
Surrogate: 1,2-Dichloroethane-d4	0.15		"	0.125		116	70-130			
Surrogate: Toluene-d8	0.13		"	0.125		105	70-130			
Surrogate: 4-Bromofluorobenzene	0.12		"	0.125		99.1	70-130			

Origins Laboratory, Inc.



*The results in this report apply to the samples analyzed in accordance with the chain of custody document. This analytical report must be reproduced in its entirety.*

Eagle Environmental Consulting, LLC  
 8000 W 44th Ave  
 Wheat Ridge CO 80033

Andrew Newberry  
 Project Number: [none]  
 Project: Noble - UPV #23-0214

**Volatile Organic Compounds by GC/MS SW846 8260D - Quality Control**  
**Origins Laboratory, Inc.**

Analyte	Result	Reporting Limit	Units	Spike Level	Source Result	%REC	%REC Limits	RPD	RPD Limit	Notes
---------	--------	-----------------	-------	-------------	---------------	------	-------------	-----	-----------	-------

Batch B4A2922 - EPA 5030 (soil)

Matrix Spike (B4A2922-MS1)	Source: Y401641-14			Prepared: 01/29/2024 Analyzed: 01/29/2024						
1,2,4-Trimethylbenzene	0.106	0.00200	mg/kg	0.100	ND	106	70-130			
1,3,5-Trimethylbenzene	0.111	0.00200	"	0.100	ND	111	70-130			
Benzene	0.0965	0.00200	"	0.100	ND	96.5	70-130			
Ethylbenzene	0.108	0.00200	"	0.100	ND	108	70-130			
Naphthalene	0.112	0.00380	"	0.100	ND	112	70-130			
Toluene	0.0969	0.00200	"	0.100	ND	96.9	70-130			
o-Xylene	0.0976	0.00200	"	0.100	ND	97.6	70-130			
m,p-Xylene	0.201	0.00400	"	0.200	ND	101	70-130			
Surrogate: 1,2-Dichloroethane-d4	0.14		"	0.125		115	70-130			
Surrogate: Toluene-d8	0.12		"	0.125		98.7	70-130			
Surrogate: 4-Bromofluorobenzene	0.13		"	0.125		101	70-130			

Origins Laboratory, Inc.



The results in this report apply to the samples analyzed in accordance with the chain of custody document. This analytical report must be reproduced in its entirety.

Eagle Environmental Consulting, LLC  
 8000 W 44th Ave  
 Wheat Ridge CO 80033

Andrew Newberry  
 Project Number: [none]  
 Project: Noble - UPV #23-0214

**Volatile Organic Compounds by GC/MS SW846 8260D - Quality Control**  
**Origins Laboratory, Inc.**

Analyte	Result	Reporting Limit	Units	Spike Level	Source Result	%REC	%REC Limits	RPD	RPD Limit	Notes
---------	--------	-----------------	-------	-------------	---------------	------	-------------	-----	-----------	-------

Batch B4A2922 - EPA 5030 (soil)

Matrix Spike Dup (B4A2922-MSD1)	Source: Y401641-14			Prepared: 01/29/2024 Analyzed: 01/29/2024						
1,2,4-Trimethylbenzene	0.110	0.00200	mg/kg	0.100	ND	110	70-130	3.48	20	
1,3,5-Trimethylbenzene	0.111	0.00200	"	0.100	ND	111	70-130	0.198	20	
Benzene	0.102	0.00200	"	0.100	ND	102	70-130	5.42	20	
Ethylbenzene	0.103	0.00200	"	0.100	ND	103	70-130	4.08	20	
Naphthalene	0.112	0.00380	"	0.100	ND	112	70-130	0.232	20	
Toluene	0.111	0.00200	"	0.100	ND	111	70-130	13.2	20	
o-Xylene	0.0975	0.00200	"	0.100	ND	97.5	70-130	0.103	20	
m,p-Xylene	0.193	0.00400	"	0.200	ND	96.5	70-130	4.27	20	
Surrogate: 1,2-Dichloroethane-d4	0.15		"	0.125		116	70-130			
Surrogate: Toluene-d8	0.13		"	0.125		107	70-130			
Surrogate: 4-Bromofluorobenzene	0.12		"	0.125		97.7	70-130			

Origins Laboratory, Inc.



*The results in this report apply to the samples analyzed in accordance with the chain of custody document. This analytical report must be reproduced in its entirety.*

Eagle Environmental Consulting, LLC  
 8000 W 44th Ave  
 Wheat Ridge CO 80033

Andrew Newberry  
 Project Number: [none]  
 Project: Noble - UPV #23-0214

**Volatile Organic Compounds by GC/MS SW846 8260D - Quality Control**  
**Origins Laboratory, Inc.**

Analyte	Result	Reporting Limit	Units	Spike Level	Source Result	%REC	%REC Limits	RPD	RPD Limit	Notes
<b>Batch B4A3002 - EPA 3550B</b>										
<b>Blank (B4A3002-BLK1)</b>										
					Prepared: 01/30/2024 Analyzed: 02/03/2024					
Diesel (C10-C28)	ND	25.0	mg/kg							U
Residual Range Organics (C28-C40)	ND	100	"							U
Surrogate: o-Terphenyl	23		"	24.9		90.6	50-150			

Origins Laboratory, Inc.



*The results in this report apply to the samples analyzed in accordance with the chain of custody document. This analytical report must be reproduced in its entirety.*

Eagle Environmental Consulting, LLC  
 8000 W 44th Ave  
 Wheat Ridge CO 80033

Andrew Newberry  
 Project Number: [none]  
 Project: Noble - UPV #23-0214

**Extractable Petroleum Hydrocarbons by 8015D - Quality Control**  
**Origins Laboratory, Inc.**

Analyte	Result	Reporting Limit	Units	Spike Level	Source Result	%REC	%REC Limits	RPD	RPD Limit	Notes
---------	--------	-----------------	-------	-------------	---------------	------	-------------	-----	-----------	-------

**Batch B4A3002 - EPA 3550B**

**LCS (B4A3002-BS1)**

Prepared: 01/30/2024 Analyzed: 02/03/2024

Diesel (C10-C28)	907	50.0	mg/kg	1000		90.7	70-130			
Residual Range Organics (C28-C40)	985	200	"	1000		98.5	70-130			
Surrogate: o-Terphenyl	63		"	49.8		126	50-150			

Origins Laboratory, Inc.



*The results in this report apply to the samples analyzed in accordance with the chain of custody document. This analytical report must be reproduced in its entirety.*

Eagle Environmental Consulting, LLC  
 8000 W 44th Ave  
 Wheat Ridge CO 80033

Andrew Newberry  
 Project Number: [none]  
 Project: Noble - UPV #23-0214

**Extractable Petroleum Hydrocarbons by 8015D - Quality Control**  
**Origins Laboratory, Inc.**

Analyte	Result	Reporting Limit	Units	Spike Level	Source Result	%REC	%REC Limits	RPD	RPD Limit	Notes
---------	--------	-----------------	-------	-------------	---------------	------	-------------	-----	-----------	-------

**Batch B4A3002 - EPA 3550B**

<b>Matrix Spike (B4A3002-MS1)</b>	<b>Source: Y401673-05</b>			<b>Prepared: 01/30/2024 Analyzed: 02/03/2024</b>						
Diesel (C10-C28)	890	50.0	mg/kg	1000	ND	89.0	70-130			
Residual Range Organics (C28-C40)	958	200	"	1000	ND	95.8	70-130			
Surrogate: o-Terphenyl	53		"	49.8		107	50-150			

Origins Laboratory, Inc.



*The results in this report apply to the samples analyzed in accordance with the chain of custody document. This analytical report must be reproduced in its entirety.*

Eagle Environmental Consulting, LLC  
 8000 W 44th Ave  
 Wheat Ridge CO 80033

Andrew Newberry  
 Project Number: [none]  
 Project: Noble - UPV #23-0214

**Extractable Petroleum Hydrocarbons by 8015D - Quality Control**  
**Origins Laboratory, Inc.**

Analyte	Result	Reporting Limit	Units	Spike Level	Source Result	%REC	%REC Limits	RPD	RPD Limit	Notes
<b>Batch B4A3002 - EPA 3550B</b>										
<b>Matrix Spike Dup (B4A3002-MSD1)</b>					<b>Source: Y401673-05</b>					Prepared: 01/30/2024 Analyzed: 02/03/2024
Diesel (C10-C28)	914	50.0	mg/kg	1000	ND	91.4	70-130	2.62	35	
Residual Range Organics (C28-C40)	921	200	"	1000	ND	92.1	70-130	3.93	35	
Surrogate: o-Terphenyl	47		"	49.8		94.7	50-150			

Origins Laboratory, Inc.



*The results in this report apply to the samples analyzed in accordance with the chain of custody document. This analytical report must be reproduced in its entirety.*

Eagle Environmental Consulting, LLC  
 8000 W 44th Ave  
 Wheat Ridge CO 80033

Andrew Newberry  
 Project Number: [none]  
 Project: Noble - UPV #23-0214

**Extractable Petroleum Hydrocarbons by 8015D - Quality Control**  
**Origins Laboratory, Inc.**

Analyte	Result	Reporting Limit	Units	Spike Level	Source Result	%REC	%REC Limits	RPD	RPD Limit	Notes
---------	--------	-----------------	-------	-------------	---------------	------	-------------	-----	-----------	-------

**Metals by EPA 6000/7000 Series Methods - Quality Control**  
**Origins Laboratory, Inc.**

Analyte	Result	Reporting Limit	Units	Spike Level	Source Result	%REC	%REC Limits	RPD	RPD Limit	Notes
---------	--------	-----------------	-------	-------------	---------------	------	-------------	-----	-----------	-------

**Batch B4B0733 - EPA 3050B**

**Blank (B4B0733-BLK1)**

Prepared: 02/07/2024 Analyzed: 02/12/2024

Arsenic	ND	0.0100	mg/kg							
Barium	ND	1.00	"							
Cadmium	ND	0.0100	"							
Copper	ND	1.00	"							
Lead	ND	0.100	"							
Nickel	ND	0.100	"							
Selenium	ND	0.0100	"							
Silver	ND	0.0100	"							
Zinc	ND	1.00	"							

**LCS (B4B0733-BS1)**

Prepared: 02/07/2024 Analyzed: 02/12/2024

Arsenic	4.43	0.0100	mg/kg	5.00		88.5	80-120			
Barium	478	1.00	"	500		95.6	80-120			
Cadmium	4.72	0.0100	"	5.00		94.5	80-120			
Copper	48.1	1.00	"	50.0		96.2	80-120			
Lead	5.28	0.100	"	5.00		106	80-120			
Nickel	4.83	0.100	"	5.00		96.6	80-120			
Selenium	4.33	0.0100	"	5.00		86.6	80-120			
Silver	5.47	0.0100	"	5.00		109	80-120			
Zinc	43.1	1.00	"	50.0		86.1	80-120			

**Matrix Spike (B4B0733-MS1)**

Source: Y402177-01

Prepared: 02/07/2024 Analyzed: 02/13/2024

Origins Laboratory, Inc.



*The results in this report apply to the samples analyzed in accordance with the chain of custody document. This analytical report must be reproduced in its entirety.*

Eagle Environmental Consulting, LLC  
 8000 W 44th Ave  
 Wheat Ridge CO 80033

Andrew Newberry  
 Project Number: [none]  
 Project: Noble - UPV #23-0214

**Metals by EPA 6000/7000 Series Methods - Quality Control**  
**Origins Laboratory, Inc.**

Analyte	Result	Reporting Limit	Units	Spike Level	Source Result	%REC	%REC Limits	RPD	RPD Limit	Notes
---------	--------	-----------------	-------	-------------	---------------	------	-------------	-----	-----------	-------

**Batch B4B0733 - EPA 3050B**

<b>Matrix Spike (B4B0733-MS1)</b>		<b>Source: Y402177-01</b>			Prepared: 02/07/2024 Analyzed: 02/13/2024					
Arsenic	8.84	0.0958	mg/kg	4.79	5.46	70.5	75-125			QM-07
Barium	530	9.58	"	479	97.5	90.2	75-125			
Cadmium	4.94	0.0958	"	4.79	0.103	101	75-125			
Copper	56.8	9.58	"	47.9	11.0	95.8	75-125			
Lead	14.3	0.958	"	4.79	9.81	93.9	75-125			
Nickel	14.9	0.958	"	4.79	11.0	82.7	75-125			
Selenium	4.60	0.0958	"	4.79	0.148	93.0	75-125			
Silver	5.25	0.0958	"	4.79	0.0520	108	75-125			
Zinc	78.5	9.58	"	47.9	36.6	87.5	75-125			

<b>Matrix Spike Dup (B4B0733-MSD1)</b>		<b>Source: Y402177-01</b>			Prepared: 02/07/2024 Analyzed: 02/12/2024					
Arsenic	9.16	0.0904	mg/kg	4.52	5.46	81.8	75-125	3.50	20	
Barium	529	9.04	"	452	97.5	95.6	75-125	0.0548	20	
Cadmium	4.79	0.0904	"	4.52	0.103	104	75-125	3.11	20	
Copper	55.2	9.04	"	45.2	11.0	97.8	75-125	2.98	20	
Lead	14.3	0.904	"	4.52	9.81	99.2	75-125	0.141	20	
Nickel	14.9	0.904	"	4.52	11.0	86.8	75-125	0.270	20	
Selenium	4.34	0.0904	"	4.52	0.148	92.8	75-125	5.86	20	
Silver	5.00	0.0904	"	4.52	0.0520	110	75-125	4.79	20	
Zinc	78.2	9.04	"	45.2	36.6	91.9	75-125	0.461	20	

Origins Laboratory, Inc.



*The results in this report apply to the samples analyzed in accordance with the chain of custody document. This analytical report must be reproduced in its entirety.*

Eagle Environmental Consulting, LLC  
 8000 W 44th Ave  
 Wheat Ridge CO 80033

Andrew Newberry  
 Project Number: [none]  
 Project: Noble - UPV #23-0214

**EPA 8270E (SW846) - Semivolatile Organic Compounds - Quality Control**  
**Origins Laboratory, Inc.**

Analyte	Result	Reporting Limit	Units	Spike Level	Source Result	%REC	%REC Limits	RPD	RPD Limit	Notes
---------	--------	-----------------	-------	-------------	---------------	------	-------------	-----	-----------	-------

**Batch B4A3028 - EPA 3580**

**Blank (B4A3028-BLK1)**

Prepared: 01/30/2024 Analyzed: 02/02/2024

1-Methylnaphthalene	ND	0.002	mg/kg							U
2-Methylnaphthalene	ND	0.002	"							U
Acenaphthene	ND	0.020	"							U
Anthracene	ND	0.020	"							U
Benzo (a) anthracene	ND	0.005	"							U
Benzo (a) pyrene	ND	0.020	"							U
Benzo (b) fluoranthene	ND	0.020	"							U
Benzo (g,h,i) perylene	ND	0.020	"							U
Benzo (k) fluoranthene	ND	0.020	"							U
Chrysene	ND	0.020	"							U
Dibenz (a,h) anthracene	ND	0.020	"							U
Fluoranthene	ND	0.020	"							U
Fluorene	ND	0.020	"							U
Indeno (1,2,3-cd) pyrene	ND	0.020	"							U
Naphthalene	ND	0.002	"							U
Phenanthrene	ND	0.020	"							U
Pyrene	ND	0.020	"							U

Surrogate: Fluorene-d10	200		ug/kg	200		101	60-130			
Surrogate: Anthracene-d10	180		"	200		92.1	60-130			
Surrogate: Pyrene-d10	200		"	200		98.6	60-130			
Surrogate: Benzo (a) pyrene-d12	200		"	200		101	60-130			

**LCS (B4A3028-BS1)**

Prepared: 01/30/2024 Analyzed: 02/02/2024

1-Methylnaphthalene	0.224	0.002	mg/kg	0.200		112	70-130			
2-Methylnaphthalene	0.225	0.002	"	0.200		113	70-130			
Acenaphthene	0.219	0.020	"	0.200		109	70-130			
Anthracene	0.198	0.020	"	0.200		98.9	70-130			

Origins Laboratory, Inc.



The results in this report apply to the samples analyzed in accordance with the chain of custody document. This analytical report must be reproduced in its entirety.

Eagle Environmental Consulting, LLC  
 8000 W 44th Ave  
 Wheat Ridge CO 80033

Andrew Newberry  
 Project Number: [none]  
 Project: Noble - UPV #23-0214

**EPA 8270E (SW846) - Semivolatile Organic Compounds - Quality Control**  
**Origins Laboratory, Inc.**

Analyte	Result	Reporting Limit	Units	Spike Level	Source Result	%REC	%REC Limits	RPD	RPD Limit	Notes
---------	--------	-----------------	-------	-------------	---------------	------	-------------	-----	-----------	-------

**Batch B4A3028 - EPA 3580**

**LCS (B4A3028-BS1)**

Prepared: 01/30/2024 Analyzed: 02/02/2024

Benzo (a) anthracene	0.205	0.005	mg/kg	0.200		103	70-130			
Benzo (a) pyrene	0.229	0.020	"	0.200		115	70-130			
Benzo (b) fluoranthene	0.228	0.020	"	0.200		114	70-130			
Benzo (g,h,i) perylene	0.231	0.020	"	0.200		115	70-130			
Benzo (k) fluoranthene	0.242	0.020	"	0.200		121	70-130			
Chrysene	0.219	0.020	"	0.200		110	70-130			
Dibenz (a,h) anthracene	0.235	0.020	"	0.200		118	70-130			
Fluoranthene	0.213	0.020	"	0.200		106	70-130			
Fluorene	0.219	0.020	"	0.200		110	70-130			
Indeno (1,2,3-cd) pyrene	0.230	0.020	"	0.200		115	70-130			
Naphthalene	0.225	0.002	"	0.200		112	70-130			
Phenanthrene	0.207	0.020	"	0.200		103	70-130			
Pyrene	0.206	0.020	"	0.200		103	70-130			
Surrogate: Fluorene-d10	200		ug/kg	200		101	60-130			
Surrogate: Anthracene-d10	190		"	200		94.1	60-130			
Surrogate: Pyrene-d10	200		"	200		97.6	60-130			
Surrogate: Benzo (a) pyrene-d12	200		"	200		102	60-130			

**Matrix Spike (B4A3028-MS1)**

Source: Y401659-01

Prepared: 01/30/2024 Analyzed: 02/02/2024

1-Methylnaphthalene	28.9	0.100	mg/kg	0.200	30.5	NR	70-130			QM-07
2-Methylnaphthalene	47.9	0.100	"	0.200	49.6	NR	70-130			QM-07
Acenaphthene	3.56	1.00	"	0.200	2.16	697	70-130			QM-07
Anthracene	0.340	1.00	"	0.200	ND	170	70-130			QM-07, U
Benzo (a) anthracene	0.307	0.005	"	0.200	0.213	47.1	70-130			QM-07
Benzo (a) pyrene	0.244	0.020	"	0.200	0.144	50.1	70-130			QM-07
Benzo (b) fluoranthene	0.238	0.020	"	0.200	0.201	18.3	70-130			QM-07

Origins Laboratory, Inc.



The results in this report apply to the samples analyzed in accordance with the chain of custody document. This analytical report must be reproduced in its entirety.

Eagle Environmental Consulting, LLC  
 8000 W 44th Ave  
 Wheat Ridge CO 80033

Andrew Newberry  
 Project Number: [none]  
 Project: Noble - UPV #23-0214

**EPA 8270E (SW846) - Semivolatile Organic Compounds - Quality Control**  
**Origins Laboratory, Inc.**

Analyte	Result	Reporting Limit	Units	Spike Level	Source Result	%REC	%REC Limits	RPD	RPD Limit	Notes
---------	--------	-----------------	-------	-------------	---------------	------	-------------	-----	-----------	-------

**Batch B4A3028 - EPA 3580**

<b>Matrix Spike (B4A3028-MS1)</b>		<b>Source: Y401659-01</b>			Prepared: 01/30/2024 Analyzed: 02/02/2024					
Benzo (g,h,i) perylene	0.241	0.020	mg/kg	0.200	0.125	58.4	70-130			QM-07
Benzo (k) fluoranthene	0.207	0.020	"	0.200	0.024	91.7	70-130			
Chrysene	0.625	0.020	"	0.200	0.559	33.2	70-130			QM-07
Dibenz (a,h) anthracene	0.223	0.020	"	0.200	0.026	98.4	70-130			
Fluoranthene	0.345	0.020	"	0.200	0.496	NR	70-130			QM-07
Fluorene	4.17	1.00	"	0.200	4.42	NR	70-130			QM-07
Indeno (1,2,3-cd) pyrene	0.217	0.020	"	0.200	0.055	81.2	70-130			
Naphthalene	20.1	0.100	"	0.200	21.0	NR	70-130			QM-07
Phenanthrene	5.52	1.00	"	0.200	5.45	35.2	70-130			QM-07
Pyrene	0.403	0.020	"	0.200	0.495	NR	70-130			QM-07
Surrogate: Fluorene-d10	190		ug/kg	200		95.1	60-130			
Surrogate: Anthracene-d10	250		"	200		124	60-130			
Surrogate: Pyrene-d10	140		"	200		68.3	60-130			
Surrogate: Benzo (a) pyrene-d12	200		"	200		100	60-130			

<b>Matrix Spike Dup (B4A3028-MSD1)</b>		<b>Source: Y401659-01</b>			Prepared: 01/30/2024 Analyzed: 02/02/2024					
1-Methylnaphthalene	28.1	0.100	mg/kg	0.200	30.5	NR	70-130	3.05	20	QM-07
2-Methylnaphthalene	45.7	0.100	"	0.200	49.6	NR	70-130	4.72	20	QM-07
Acenaphthene	3.39	1.00	"	0.200	2.16	614	70-130	4.76	20	QM-07
Anthracene	0.327	1.00	"	0.200	ND	164	70-130	3.66	20	QM-07, U
Benzo (a) anthracene	0.368	0.005	"	0.200	0.213	77.6	70-130	18.1	20	
Benzo (a) pyrene	0.259	0.020	"	0.200	0.144	57.2	70-130	5.65	20	QM-07
Benzo (b) fluoranthene	0.269	0.020	"	0.200	0.201	34.1	70-130	12.5	20	QM-07
Benzo (g,h,i) perylene	0.268	0.020	"	0.200	0.125	71.5	70-130	10.3	20	
Benzo (k) fluoranthene	0.242	0.020	"	0.200	0.024	109	70-130	15.7	20	
Chrysene	0.703	0.020	"	0.200	0.559	71.9	70-130	11.7	20	

Origins Laboratory, Inc.



*The results in this report apply to the samples analyzed in accordance with the chain of custody document. This analytical report must be reproduced in its entirety.*

Eagle Environmental Consulting, LLC  
 8000 W 44th Ave  
 Wheat Ridge CO 80033

Andrew Newberry  
 Project Number: [none]  
 Project: Noble - UPV #23-0214

**EPA 8270E (SW846) - Semivolatile Organic Compounds - Quality Control**  
**Origins Laboratory, Inc.**

Analyte	Result	Reporting Limit	Units	Spike Level	Source Result	%REC	%REC Limits	RPD	RPD Limit	Notes
---------	--------	-----------------	-------	-------------	---------------	------	-------------	-----	-----------	-------

**Batch B4A3028 - EPA 3580**

<b>Matrix Spike Dup (B4A3028-MSD1)</b>		<b>Source: Y401659-01</b>			Prepared: 01/30/2024 Analyzed: 02/02/2024					
Dibenz (a,h) anthracene	0.216	0.020	mg/kg	0.200	0.026	94.9	70-130	3.21	20	
Fluoranthene	0.437	0.020	"	0.200	0.496	NR	70-130	23.5	20	QM-07, QR-03
Fluorene	5.15	1.00	"	0.200	4.42	368	70-130	21.1	20	QM-07, QR-03
Indeno (1,2,3-cd) pyrene	0.231	0.020	"	0.200	0.055	87.9	70-130	5.98	20	
Naphthalene	18.9	0.100	"	0.200	21.0	NR	70-130	6.22	20	QM-07
Phenanthrene	5.27	1.00	"	0.200	5.45	NR	70-130	4.66	20	QM-07
Pyrene	0.399	0.020	"	0.200	0.495	NR	70-130	0.965	20	QM-07
Surrogate: Fluorene-d10	190		ug/kg	200		93.1	60-130			
Surrogate: Anthracene-d10	250		"	200		126	60-130			
Surrogate: Pyrene-d10	140		"	200		70.7	60-130			
Surrogate: Benzo (a) pyrene-d12	200		"	200		100	60-130			

Origins Laboratory, Inc.



*The results in this report apply to the samples analyzed in accordance with the chain of custody document. This analytical report must be reproduced in its entirety.*

Eagle Environmental Consulting, LLC  
 8000 W 44th Ave  
 Wheat Ridge CO 80033

Andrew Newberry  
 Project Number: [none]  
 Project: Noble - UPV #23-0214

**Classical Chemistry Parameters - Quality Control**  
**Origins Laboratory, Inc.**

Analyte	Result	Reporting Limit	Units	Spike Level	Source Result	%REC	%REC Limits	RPD	RPD Limit	Notes
---------	--------	-----------------	-------	-------------	---------------	------	-------------	-----	-----------	-------

**Batch B4A3014 - Saturated Paste Metals**

**Blank (B4A3014-BLK1)**

Prepared: 01/30/2024 Analyzed: 01/31/2024

Calcium PPM	ND	10.0	mg/L							
SAR	ND	0.0100	SAR							
Magnesium PPM	ND	10.0	mg/L							
Sodium PPM	ND	10.0	"							

**Duplicate (B4A3014-DUP1)**

**Source: Y401683-01**

Prepared: 01/30/2024 Analyzed: 01/31/2024

SAR	ND	0.0100	SAR		0.432				200	
Calcium PPM	539	10.0	mg/L		550			2.04	50	
Magnesium PPM	65.5	10.0	"		68.7			4.74	50	
Sodium PPM	46.5	10.0	"		40.4			14.1	50	

**Batch B4A3110 - DTPA Sorbitol Preparation**

**Blank (B4A3110-BLK1)**

Prepared: 01/31/2024 Analyzed: 02/01/2024

Boron	ND	0.100	mg/L							
-------	----	-------	------	--	--	--	--	--	--	--

**Duplicate (B4A3110-DUP1)**

**Source: Y401682-02**

Prepared: 01/31/2024 Analyzed: 02/01/2024

Boron	0.0855	0.100	mg/L		0.0910			6.16	50	
-------	--------	-------	------	--	--------	--	--	------	----	--

Origins Laboratory, Inc.



*The results in this report apply to the samples analyzed in accordance with the chain of custody document. This analytical report must be reproduced in its entirety.*

Eagle Environmental Consulting, LLC  
 8000 W 44th Ave  
 Wheat Ridge CO 80033

Andrew Newberry  
 Project Number: [none]  
 Project: Noble - UPV #23-0214

**Saturated Paste - Quality Control**  
**Origins Laboratory, Inc.**

Analyte	Result	Reporting Limit	Units	Spike Level	Source Result	%REC	%REC Limits	RPD	RPD Limit	Notes
<b>Batch B4A3019 - Saturated Paste pH/EC</b>										
<b>Blank (B4A3019-BLK1)</b>					Prepared: 01/30/2024 Analyzed: 01/31/2024					
Specific Conductance (EC)	ND	0.00500	mmhos/cm							
<b>Duplicate (B4A3019-DUP1)</b>					<b>Source: Y401683-01</b> Prepared: 01/30/2024 Analyzed: 01/31/2024					
pH	8.16		pH Units		8.20			0.489	25	
Specific Conductance (EC)	2.25	0.00500	mmhos/cm		2.25			0.258	25	

Origins Laboratory, Inc.



*The results in this report apply to the samples analyzed in accordance with the chain of custody document. This analytical report must be reproduced in its entirety.*

Eagle Environmental Consulting, LLC  
 8000 W 44th Ave  
 Wheat Ridge CO 80033

Andrew Newberry  
 Project Number: [none]  
 Project: Noble - UPV #23-0214

**Total Metals by 7196A - Quality Control**  
**Waypoint Analytical, LLC.**

Analyte	Result	Reporting Limit	Units	Spike Level	Source Result	%REC	%REC Limits	RPD	RPD Limit	Notes
<b>Batch L732880 -</b>										
<b>DUP (L 84530-DUP)</b>		<b>Source: 84530</b>			Prepared: Analyzed: 02/15/2024					
Chromium, Hexavalent	ND	0.5	mg/Kg		<0.500		-	0	20	
<b>MS (L 84530-MS)</b>		<b>Source: 84530</b>			Prepared: Analyzed: 02/15/2024					
Chromium, Hexavalent	18.4	2.5	mg/Kg	38.9	< 0.244	47	75-125			*
<b>LCS (LCS)</b>		Prepared: Analyzed: 02/15/2024								
Chromium, Hexavalent	6.28	0.5	mg/Kg	8		79	75-125			
<b>LRB (LRB)</b>		Prepared: Analyzed: 02/15/2024								
Chromium, Hexavalent	ND	0.5	mg/Kg				-			

Origins Laboratory, Inc.



*The results in this report apply to the samples analyzed in accordance with the chain of custody document. This analytical report must be reproduced in its entirety.*

Eagle Environmental Consulting, LLC  
 8000 W 44th Ave  
 Wheat Ridge CO 80033

Andrew Newberry  
 Project Number: [none]  
 Project: Noble - UPV #23-0214

**Total Metals by 7196A - Quality Control**  
**Waypoint Analytical, LLC.**

Analyte	Result	Reporting Limit	Units	Spike Level	Source Result	%REC	%REC Limits	RPD	RPD Limit	Notes
<b>Batch L732878 -</b>										
<b>DUP (L 84502-DUP)</b>		<b>Source: 84502</b>			Prepared: Analyzed: 02/15/2024					
Chromium, Hexavalent	ND	0.5	mg/Kg		<0.500		-	0	20	
<b>MS (L 84502-MS)</b>		<b>Source: 84502</b>			Prepared: Analyzed: 02/15/2024					
Chromium, Hexavalent	30.9	2.5	mg/Kg	38.9	< 0.244	79	75-125			
<b>LCS (LCS)</b>		Prepared: Analyzed: 02/15/2024								
Chromium, Hexavalent	6.17	0.5	mg/Kg	8		77	75-125			
<b>LRB (LRB)</b>		Prepared: Analyzed: 02/15/2024								
Chromium, Hexavalent	ND	0.5	mg/Kg				-			

Origins Laboratory, Inc.



*The results in this report apply to the samples analyzed in accordance with the chain of custody document. This analytical report must be reproduced in its entirety.*

Eagle Environmental Consulting, LLC  
8000 W 44th Ave  
Wheat Ridge CO 80033

Andrew Newberry  
Project Number: [none]  
Project: Noble - UPV #23-0214

**Notes and Definitions**

U Sample is Non-Detect.

QR-03 The RPD value for the sample duplicate or MS/MSD was outside of QC acceptance limits due to matrix interference. QC batch accepted based on LCS and/or LCSD recovery and/or RPD values.

QM-07 The spike recovery was outside acceptance limits for the MS and/or MSD. The batch was accepted based on acceptable LCS recovery.

\* QC Failure

ND Analyte NOT DETECTED at or above the reporting limit

RPD Relative Percent Difference

All soil results are reported on a wet weight basis.

Calculated results may use J-flag data (instead of reported "ND") as part of calculation to provide a more accurate result.

Origins Laboratory, Inc.



*The results in this report apply to the samples analyzed in accordance with the chain of custody document. This analytical report must be reproduced in its entirety.*



February 22, 2024

Eagle Environmental Consulting, LLC

Andrew Newberry

8000 W 44th Ave

Wheat Ridge CO 80033

Project Name - Noble - UPV #23-0214

Project Number - [none]

Attached are your analytical results for Noble - UPV #23-0214 received by Origins Laboratory, Inc. February 15, 2024. This project is associated with Origins project number Y402410-01.

The analytical results in the following report were analyzed under the guidelines of EPA Methods. These methods are identified as follows; "SW" are defined in SW-846, "EPA" are defined in 40CFR part 136 and "SM" are defined in the most current revision of Standard Methods For the Examination of Water and Wastewater.

The analytical results apply specifically to the samples and analyses specified per the attached Chain of Custody. As such, this report shall not be reproduced except in full, without the written approval of Origin's laboratory.

Unless otherwise noted, the analytical results for all soil samples are reported on a wet weight basis. All analytical analyses were performed under NELAP guidelines unless noted by a data qualifier.

Any holding time exceedances, deviations from the method specifications or deviations from Origins Laboratory's Standard Operating Procedures are outlined in the case narrative.

Thank you for selecting Origins for your analytical needs. Please contact us with any questions concerning this report, or if we can help with anything at all.

Origins Laboratory, Inc.  
303.433.1322  
o-squad@oelabinc.com



1725 Elk Place, Denver, CO 80211 | Phone: 303.433.1322 | Fax: 303.265.9645

Eagle Environmental Consulting, LLC  
8000 W 44th Ave  
Wheat Ridge CO 80033

Andrew Newberry  
Project Number: [none]  
Project: Noble - UPV #23-0214

CROSS REFERENCE REPORT

Sample ID	Laboratory ID	Matrix	Date Sampled	Date Received
FL-SS-01@3'	Y402410-01	Soil	February 15, 2024 12:40	02/15/2024 16:59
Background-02@2'	Y402410-02	Soil	February 15, 2024 12:50	02/15/2024 16:59

Origins Laboratory, Inc.



*The results in this report apply to the samples analyzed in accordance with the chain of custody document. This analytical report must be reproduced in its entirety.*

Eagle Environmental Consulting, LLC  
 8000 W 44th Ave  
 Wheat Ridge CO 80033

Andrew Newberry  
 Project Number: [none]  
 Project: Noble - UPV #23-0214



402410

www.originslaboratory.com

page | of |

Client: Eagle Environmental Consulting  
 Address: 8000 W 44th Ave  
Wheat Ridge, CO 80053  
 Telephone Number: 303-433-0479  
 Email Address: anewberry@eagle-environ.com

Project Manager: Andrew Newberry  
 Project Name: UPV #23-0214  
 Project Number: \_\_\_\_\_  
 Samples Collected By: RS

1725 Elk Place | Denver, CO 80211 | Phone: 303.433.1322 | Fax: 303.265.9645

Sample ID Description	Date Sampled	Time Sampled	# of Containers	Preservative				Matrix			Analysis				Sample Instructions	
				HCl	HNO <sub>3</sub>	Other	Groundwater	Soil	Air Summa #	Other	6.0x, 1.0x	MB, 1.0x	MB, 1.0x	MB, 1.0x		MB, 1.0x
FL-55-01E3	2/15/24	1240	3	X				X				X	X	X	EC, SAR, pH = 1	
Background-02E2	↓	1250	2	X				X				X	X	X	Saturated flask prep 2	
															3	
															4	
															5	
															6	
															7	
															8	
															9	
															10	
Relinquished By: <u>[Signature]</u>	Date: <u>2/15/24</u>	Time: <u>1659</u>	Time: <u>1659</u>	Received By: <u>EAS</u>	Date: <u>2/15/24</u>	Time: <u>1659</u>	Date: <u>2/15/24</u>	Time: <u>1659</u>	Turnaround Time: Same Day <input type="checkbox"/> 24 Hr <input type="checkbox"/> 48 Hr <input type="checkbox"/> 72 Hr <input checked="" type="checkbox"/> Standard							
Relinquished By:	Date:	Time:	Time:	Received By:	Date:	Time:	Date:	Time:								

Temp Received: U.I. Date Results Needed: Urbic

Origins Laboratory, Inc.

The results in this report apply to the samples analyzed in accordance with the chain of custody document. This analytical report must be reproduced in its entirety.

Eagle Environmental Consulting, LLC  
 8000 W 44th Ave  
 Wheat Ridge CO 80033

Andrew Newberry  
 Project Number: [none]  
 Project: Noble - UPV #23-0214

Origins Laboratory F-012207-01-R1  
Effective Date: 01/09/12

**Sample Receipt Checklist**

Origins Work Order: 4402410 Client: Eagle  
 Client Project ID: UPV #23-0274

Checklist Completed by: JTB/EAS Shipped Via: HUO  
 (UPS, FedEx, Hand Delivered, Pick-up, etc.)  
 Date/time completed: 2/16/24 Airbill #: N/A

Matrix(s) Received: (Check all that apply):  Soil/Solid  Water  Other: \_\_\_\_\_

Cooler Number/Temperature: 1, 41.0 °C / \_\_\_\_\_ °C / \_\_\_\_\_ °C (Describe) \_\_\_\_\_ °C

Thermometer ID: 7004

Requirement Description	Yes	No	N/A	Comments (if any)
If samples require cooling, was the temperature between 0°C to ≤ 6°C <sup>(1)</sup> ?	<input checked="" type="checkbox"/>			
Is there ice present (document if blue ice is used)	<input checked="" type="checkbox"/>			
Are custody seals present on cooler? (if so, document in comments if they are signed and dated, broken or intact)		<input checked="" type="checkbox"/>		
Are custody seals present on each sample container? (if so, document in comments if they are signed and dated, broken or intact)		<input checked="" type="checkbox"/>		
Were all samples received intact <sup>(1)</sup> ?	<input checked="" type="checkbox"/>			
Was adequate sample volume provided <sup>(1)</sup> ?	<input checked="" type="checkbox"/>			
Are short holding time analytes or samples with HTs due within 48 hours present <sup>(1)</sup> ?		<input checked="" type="checkbox"/>		
Is a chain-of-custody (COC) present and filled out completely <sup>(1)</sup> ?	<input checked="" type="checkbox"/>			
Does the COC agree with the number and type of sample bottles received <sup>(1)</sup> ?	<input checked="" type="checkbox"/>			
Do the sample IDs on the bottle labels match the COC <sup>(1)</sup> ?	<input checked="" type="checkbox"/>			
Is the COC properly relinquished by the client with date and time recorded <sup>(1)</sup> ?	<input checked="" type="checkbox"/>			
For volatiles in water – is there headspace (> ¼ inch bubble) present? <b>If yes, contact client and note in narrative.</b>			<input checked="" type="checkbox"/>	
Are samples preserved that require preservation and was it checked <sup>(1)</sup> ? (note ID of confirmation instrument used in comments) / (preservation is not confirmed for subcontracted analyses in order to insure sample integrity)/(pH ~2 for samples preserved with HNO <sub>3</sub> , HCL, H <sub>2</sub> SO <sub>4</sub> ) / (pH >10 for samples preserved with NaAsO <sub>2</sub> +NaOH, ZnAc+NaOH)			<input checked="" type="checkbox"/>	
Additional Comments (if any):				

<sup>(1)</sup>If NO, then contact the client before proceeding with analysis and note date/time and person contacted as well as the corrective action to in the additional comments (above) and the case narrative.

Reviewed by (Project Manager) [Signature]

2/19/24  
Date/Time Reviewed

Origins Laboratory, Inc.

[Signature]

The results in this report apply to the samples analyzed in accordance with the chain of custody document. This analytical report must be reproduced in its entirety.

Eagle Environmental Consulting, LLC  
 8000 W 44th Ave  
 Wheat Ridge CO 80033

Andrew Newberry  
 Project Number: [none]  
 Project: Noble - UPV #23-0214

**FL-SS-01@3'**  
**2/15/2024 12:40:00PM**

Analyte	Result	Reporting Limit	Units	Dilution	Batch	Analyst	Prepared	Analyzed	Notes
---------	--------	-----------------	-------	----------	-------	---------	----------	----------	-------

**Origins Laboratory, Inc.**  
**Y402410-01 (Soil)**

**Boron (DTPA Sorbitol)**

Boron	ND	0.0994	mg/L	1	B4B1910	ACC	02/19/2024	02/20/2024	
-------	----	--------	------	---	---------	-----	------------	------------	--

**DRO/ORO by EPA 8015D**

Diesel (C10-C28)	ND	25.0	mg/kg	1	B4B1901	ADM	02/19/2024	02/22/2024	U
Residual Range Organics (C28-C40)	ND	100	"	"	"	ADM	"	"	U

Surrogate: <i>o</i> -Terphenyl	88.9 %	50-150			"	"	"	"	
--------------------------------	--------	--------	--	--	---	---	---	---	--

**GBTEX+TMBs by 8260D**

1,2,4-Trimethylbenzene	ND	0.00200	mg/kg	1	B4B1801	HK	02/18/2024	02/18/2024	U
1,3,5-Trimethylbenzene	ND	0.00200	"	"	"	HK	"	"	U
Benzene	ND	0.00200	"	"	"	HK	"	"	U
Ethylbenzene	ND	0.00200	"	"	"	HK	"	"	U
Naphthalene	ND	0.00380	"	"	"	HK	"	"	U
Toluene	ND	0.00200	"	"	"	HK	"	"	U
Xylenes, total	ND	0.00200	"	"	"	HK	"	"	U
Gasoline Range Hydrocarbons	ND	0.200	"	"	"	HK	"	"	U

Surrogate: 1,2-Dichloroethane-d4	109 %	70-130			"	"	"	"	
Surrogate: Toluene-d8	99.6 %	70-130			"	"	"	"	
Surrogate: 4-Bromofluorobenzene	99.6 %	70-130			"	"	"	"	

Origins Laboratory, Inc.



The results in this report apply to the samples analyzed in accordance with the chain of custody document. This analytical report must be reproduced in its entirety.

Eagle Environmental Consulting, LLC  
 8000 W 44th Ave  
 Wheat Ridge CO 80033

Andrew Newberry  
 Project Number: [none]  
 Project: Noble - UPV #23-0214

FL-SS-01@3'

2/15/2024 12:40:00PM

Analyte	Result	Reporting Limit	Units	Dilution	Batch	Analyst	Prepared	Analyzed	Notes
---------	--------	-----------------	-------	----------	-------	---------	----------	----------	-------

**Origins Laboratory, Inc.**  
 Y402410-01 (Soil)

**Metals by Saturated Paste by EPA 6010**

Calcium	1.53	0.499	meq/L	10	[CALC]	ACC	02/19/2024	02/20/2024	
Magnesium	ND	0.823	"	"	"	ACC	"	"	
Sodium	ND	0.435	"	"	"	ACC	"	"	

**PAH by EPA 8270E**

1-Methylnaphthalene	ND	0.002	mg/kg	1	B4B2006	Windo	02/20/2024	02/21/2024	U
2-Methylnaphthalene	0.002	0.002	"	"	"	Windo	"	"	
Acenaphthene	ND	0.020	"	"	"	Windo	"	"	U
Anthracene	ND	0.020	"	"	"	Windo	"	"	U
Benzo (a) anthracene	ND	0.005	"	"	"	Windo	"	"	U
Benzo (a) pyrene	ND	0.020	"	"	"	Windo	"	"	U
Benzo (b) fluoranthene	ND	0.020	"	"	"	Windo	"	"	U
Benzo (k) fluoranthene	ND	0.020	"	"	"	Windo	"	"	U
Chrysene	ND	0.020	"	"	"	Windo	"	"	U
Dibenz (a,h) anthracene	ND	0.020	"	"	"	Windo	"	"	U
Fluoranthene	ND	0.020	"	"	"	Windo	"	"	U
Fluorene	ND	0.020	"	"	"	Windo	"	"	U
Indeno (1,2,3-cd) pyrene	ND	0.020	"	"	"	Windo	"	"	U
Pyrene	ND	0.020	"	"	"	Windo	"	"	U

Origins Laboratory, Inc.



The results in this report apply to the samples analyzed in accordance with the chain of custody document. This analytical report must be reproduced in its entirety.

Eagle Environmental Consulting, LLC  
 8000 W 44th Ave  
 Wheat Ridge CO 80033

Andrew Newberry  
 Project Number: [none]  
 Project: Noble - UPV #23-0214

**FL-SS-01@3'**

**2/15/2024 12:40:00PM**

Analyte	Result	Reporting Limit	Units	Dilution	Batch	Analyst	Prepared	Analyzed	Notes
---------	--------	-----------------	-------	----------	-------	---------	----------	----------	-------

**Origins Laboratory, Inc.**  
**Y402410-01 (Soil)**

**PAH by EPA 8270E**

Surrogate: Fluorene-d10	100 %	60-130			B4B20 06		02/20/2024	02/21/2024	
Surrogate: Anthracene-d10	95.9 %	60-130			"		"	"	
Surrogate: Pyrene-d10	94.3 %	60-130			"		"	"	
Surrogate: Benzo (a) pyrene-d12	102 %	60-130			"		"	"	

**pH in Soil by 9045D**

pH	7.97		pH Units	1	B4B1912	EAL	02/19/2024	02/20/2024	
----	------	--	----------	---	---------	-----	------------	------------	--

**SAR by 20B Saturated Paste**

SAR	0.312	0.0100	SAR	1	B4B1904	ACC	02/19/2024	02/20/2024	
-----	-------	--------	-----	---	---------	-----	------------	------------	--

**Specific Conductance Mod. 9050A**

Specific Conductance (EC)	0.312	0.00500	mmhos/cm	1	B4B1912	EAL	02/19/2024	02/20/2024	
---------------------------	-------	---------	----------	---	---------	-----	------------	------------	--

Origins Laboratory, Inc.



The results in this report apply to the samples analyzed in accordance with the chain of custody document. This analytical report must be reproduced in its entirety.

Eagle Environmental Consulting, LLC  
 8000 W 44th Ave  
 Wheat Ridge CO 80033

Andrew Newberry  
 Project Number: [none]  
 Project: Noble - UPV #23-0214

**Background-02@2'**  
**2/15/2024 12:50:00PM**

Analyte	Result	Reporting Limit	Units	Dilution	Batch	Analyst	Prepared	Analyzed	Notes
---------	--------	-----------------	-------	----------	-------	---------	----------	----------	-------

**Origins Laboratory, Inc.**  
**Y402410-02 (Soil)**

**Boron (DTPA Sorbitol)**

Boron	0.205	0.0996	mg/L	1	B4B1910	ACC	02/19/2024	02/20/2024	
-------	-------	--------	------	---	---------	-----	------------	------------	--

**Metals by Saturated Paste by EPA 6010**

Calcium	2.16	0.499	meq/L	10	[CALC]	ACC	02/19/2024	02/20/2024	
Magnesium	1.59	0.823	"	"	"	ACC	"	"	
Sodium	0.760	0.435	"	"	"	ACC	"	"	

**pH in Soil by 9045D**

pH	6.96		pH Units	1	B4B1912	EAL	02/19/2024	02/20/2024	
----	------	--	----------	---	---------	-----	------------	------------	--

**SAR by 20B Saturated Paste**

SAR	0.556	0.0100	SAR	1	B4B1904	ACC	02/19/2024	02/20/2024	
-----	-------	--------	-----	---	---------	-----	------------	------------	--

**Specific Conductance Mod. 9050A**

Specific Conductance (EC)	1.01	0.00500	mmhos/cm	1	B4B1912	EAL	02/19/2024	02/20/2024	
---------------------------	------	---------	----------	---	---------	-----	------------	------------	--

Origins Laboratory, Inc.



*The results in this report apply to the samples analyzed in accordance with the chain of custody document. This analytical report must be reproduced in its entirety.*

Eagle Environmental Consulting, LLC  
 8000 W 44th Ave  
 Wheat Ridge CO 80033

Andrew Newberry  
 Project Number: [none]  
 Project: Noble - UPV #23-0214

**Volatile Organic Compounds by GC/MS SW846 8260D - Quality Control**  
**Origins Laboratory, Inc.**

Analyte	Result	Reporting Limit	Units	Spike Level	Source Result	%REC	%REC Limits	RPD	RPD Limit	Notes
---------	--------	-----------------	-------	-------------	---------------	------	-------------	-----	-----------	-------

**Batch B4B1801 - EPA 5030 (soil)**

**Blank (B4B1801-BLK1)**

Prepared: 02/18/2024 Analyzed: 02/18/2024

1,2,4-Trimethylbenzene	ND	0.00200	mg/kg							U
1,3,5-Trimethylbenzene	ND	0.00200	"							U
Benzene	ND	0.00200	"							U
Ethylbenzene	ND	0.00200	"							U
Naphthalene	ND	0.00380	"							U
Toluene	ND	0.00200	"							U
Xylenes, total	ND	0.00200	"							U
Gasoline Range Hydrocarbons	ND	0.200	"							U
Surrogate: 1,2-Dichloroethane-d4	0.13		"	0.125	104		70-130			
Surrogate: Toluene-d8	0.13		"	0.125	101		70-130			
Surrogate: 4-Bromofluorobenzene	0.12		"	0.125	98.6		70-130			

Origins Laboratory, Inc.



*The results in this report apply to the samples analyzed in accordance with the chain of custody document. This analytical report must be reproduced in its entirety.*

Eagle Environmental Consulting, LLC  
 8000 W 44th Ave  
 Wheat Ridge CO 80033

Andrew Newberry  
 Project Number: [none]  
 Project: Noble - UPV #23-0214

**Volatile Organic Compounds by GC/MS SW846 8260D - Quality Control**  
**Origins Laboratory, Inc.**

Analyte	Result	Reporting Limit	Units	Spike Level	Source Result	%REC	%REC Limits	RPD	RPD Limit	Notes
---------	--------	-----------------	-------	-------------	---------------	------	-------------	-----	-----------	-------

**Batch B4B1801 - EPA 5030 (soil)**

**LCS (B4B1801-BS1)**

Prepared: 02/18/2024 Analyzed: 02/18/2024

1,2,4-Trimethylbenzene	0.0944	0.00200	mg/kg	0.100		94.4	70-130			
1,3,5-Trimethylbenzene	0.0947	0.00200	"	0.100		94.7	70-130			
Benzene	0.0816	0.00200	"	0.100		81.6	70-130			
Ethylbenzene	0.0895	0.00200	"	0.100		89.5	70-130			
Naphthalene	0.0998	0.00380	"	0.100		99.8	70-130			
Toluene	0.0848	0.00200	"	0.100		84.8	70-130			
o-Xylene	0.0918	0.00200	"	0.100		91.8	70-130			
m,p-Xylene	0.179	0.00400	"	0.200		89.5	70-130			
Surrogate: 1,2-Dichloroethane-d4	0.12		"	0.125		98.5	70-130			
Surrogate: Toluene-d8	0.13		"	0.125		101	70-130			
Surrogate: 4-Bromofluorobenzene	0.12		"	0.125		98.5	70-130			

Origins Laboratory, Inc.



*The results in this report apply to the samples analyzed in accordance with the chain of custody document. This analytical report must be reproduced in its entirety.*

Eagle Environmental Consulting, LLC  
 8000 W 44th Ave  
 Wheat Ridge CO 80033

Andrew Newberry  
 Project Number: [none]  
 Project: Noble - UPV #23-0214

**Volatile Organic Compounds by GC/MS SW846 8260D - Quality Control**  
**Origins Laboratory, Inc.**

Analyte	Result	Reporting Limit	Units	Spike Level	Source Result	%REC	%REC Limits	RPD	RPD Limit	Notes
---------	--------	-----------------	-------	-------------	---------------	------	-------------	-----	-----------	-------

Batch B4B1801 - EPA 5030 (soil)

Matrix Spike (B4B1801-MS1)	Source: Y402373-01			Prepared: 02/18/2024 Analyzed: 02/18/2024						
1,2,4-Trimethylbenzene	0.0976	0.00200	mg/kg	0.100	ND	97.6	70-130			
1,3,5-Trimethylbenzene	0.0991	0.00200	"	0.100	ND	99.1	70-130			
Benzene	0.0783	0.00200	"	0.100	ND	78.3	70-130			
Ethylbenzene	0.0930	0.00200	"	0.100	ND	93.0	70-130			
Naphthalene	0.0904	0.00380	"	0.100	ND	90.4	70-130			
Toluene	0.0859	0.00200	"	0.100	ND	85.9	70-130			
o-Xylene	0.0948	0.00200	"	0.100	ND	94.8	70-130			
m,p-Xylene	0.184	0.00400	"	0.200	ND	92.1	70-130			
Surrogate: 1,2-Dichloroethane-d4	0.12		"	0.125		95.4	70-130			
Surrogate: Toluene-d8	0.13		"	0.125		103	70-130			
Surrogate: 4-Bromofluorobenzene	0.13		"	0.125		100	70-130			

Origins Laboratory, Inc.



*The results in this report apply to the samples analyzed in accordance with the chain of custody document. This analytical report must be reproduced in its entirety.*

Eagle Environmental Consulting, LLC  
 8000 W 44th Ave  
 Wheat Ridge CO 80033

Andrew Newberry  
 Project Number: [none]  
 Project: Noble - UPV #23-0214

**Volatile Organic Compounds by GC/MS SW846 8260D - Quality Control**  
**Origins Laboratory, Inc.**

Analyte	Result	Reporting Limit	Units	Spike Level	Source Result	%REC	%REC Limits	RPD	RPD Limit	Notes
---------	--------	-----------------	-------	-------------	---------------	------	-------------	-----	-----------	-------

Batch B4B1801 - EPA 5030 (soil)

Matrix Spike Dup (B4B1801-MSD1)	Source: Y402373-01			Prepared: 02/18/2024 Analyzed: 02/18/2024						
1,2,4-Trimethylbenzene	0.0914	0.00200	mg/kg	0.100	ND	91.4	70-130	6.58	20	
1,3,5-Trimethylbenzene	0.0908	0.00200	"	0.100	ND	90.8	70-130	8.76	20	
Benzene	0.0777	0.00200	"	0.100	ND	77.7	70-130	0.667	20	
Ethylbenzene	0.0856	0.00200	"	0.100	ND	85.6	70-130	8.28	20	
Naphthalene	0.0978	0.00380	"	0.100	ND	97.8	70-130	7.82	20	
Toluene	0.0815	0.00200	"	0.100	ND	81.5	70-130	5.23	20	
o-Xylene	0.0881	0.00200	"	0.100	ND	88.1	70-130	7.30	20	
m,p-Xylene	0.170	0.00400	"	0.200	ND	85.2	70-130	7.89	20	
Surrogate: 1,2-Dichloroethane-d4	0.13		"	0.125		103	70-130			
Surrogate: Toluene-d8	0.12		"	0.125		99.2	70-130			
Surrogate: 4-Bromofluorobenzene	0.12		"	0.125		99.2	70-130			

Origins Laboratory, Inc.



*The results in this report apply to the samples analyzed in accordance with the chain of custody document. This analytical report must be reproduced in its entirety.*

Eagle Environmental Consulting, LLC  
 8000 W 44th Ave  
 Wheat Ridge CO 80033

Andrew Newberry  
 Project Number: [none]  
 Project: Noble - UPV #23-0214

**Volatile Organic Compounds by GC/MS SW846 8260D - Quality Control**  
**Origins Laboratory, Inc.**

Analyte	Result	Reporting Limit	Units	Spike Level	Source Result	%REC	%REC Limits	RPD	RPD Limit	Notes
<b>Batch B4B1901 - EPA 3550B</b>										
<b>Blank (B4B1901-BLK1)</b>										
					Prepared: 02/19/2024 Analyzed: 02/21/2024					
Diesel (C10-C28)	ND	25.0	mg/kg							U
Residual Range Organics (C28-C40)	ND	100	"							U
Surrogate: o-Terphenyl	21		"	24.9		86.0	50-150			

Origins Laboratory, Inc.



*The results in this report apply to the samples analyzed in accordance with the chain of custody document. This analytical report must be reproduced in its entirety.*

Eagle Environmental Consulting, LLC  
 8000 W 44th Ave  
 Wheat Ridge CO 80033

Andrew Newberry  
 Project Number: [none]  
 Project: Noble - UPV #23-0214

**Extractable Petroleum Hydrocarbons by 8015D - Quality Control**  
**Origins Laboratory, Inc.**

Analyte	Result	Reporting Limit	Units	Spike Level	Source Result	%REC	%REC Limits	RPD	RPD Limit	Notes
---------	--------	-----------------	-------	-------------	---------------	------	-------------	-----	-----------	-------

**Batch B4B1901 - EPA 3550B**

**LCS (B4B1901-BS1)**

Prepared: 02/19/2024 Analyzed: 02/21/2024

Diesel (C10-C28)	1030	50.0	mg/kg	1000		103	70-130			
Residual Range Organics (C28-C40)	1180	200	"	1000		118	70-130			
Surrogate: o-Terphenyl	46		"	49.8		92.4	50-150			

Origins Laboratory, Inc.



*The results in this report apply to the samples analyzed in accordance with the chain of custody document. This analytical report must be reproduced in its entirety.*

Eagle Environmental Consulting, LLC  
 8000 W 44th Ave  
 Wheat Ridge CO 80033

Andrew Newberry  
 Project Number: [none]  
 Project: Noble - UPV #23-0214

**Extractable Petroleum Hydrocarbons by 8015D - Quality Control**  
**Origins Laboratory, Inc.**

Analyte	Result	Reporting Limit	Units	Spike Level	Source Result	%REC	%REC Limits	RPD	RPD Limit	Notes
---------	--------	-----------------	-------	-------------	---------------	------	-------------	-----	-----------	-------

**Batch B4B1901 - EPA 3550B**

<b>Matrix Spike (B4B1901-MS1)</b>	<b>Source: Y402331-01</b>			<b>Prepared: 02/19/2024 Analyzed: 02/21/2024</b>						
Diesel (C10-C28)	979	50.0	mg/kg	1000	ND	97.9	70-130			
Residual Range Organics (C28-C40)	1130	200	"	1000	ND	113	70-130			
Surrogate: o-Terphenyl	51		"	49.8		103	50-150			

Origins Laboratory, Inc.



*The results in this report apply to the samples analyzed in accordance with the chain of custody document. This analytical report must be reproduced in its entirety.*

Eagle Environmental Consulting, LLC  
 8000 W 44th Ave  
 Wheat Ridge CO 80033

Andrew Newberry  
 Project Number: [none]  
 Project: Noble - UPV #23-0214

**Extractable Petroleum Hydrocarbons by 8015D - Quality Control**  
**Origins Laboratory, Inc.**

Analyte	Result	Reporting Limit	Units	Spike Level	Source Result	%REC	%REC Limits	RPD	RPD Limit	Notes
<b>Batch B4B1901 - EPA 3550B</b>										
<b>Matrix Spike Dup (B4B1901-MSD1)</b>		<b>Source: Y402331-01</b>			Prepared: 02/19/2024 Analyzed: 02/21/2024					
Diesel (C10-C28)	984	50.0	mg/kg	1000	ND	98.4	70-130	0.432	35	
Residual Range Organics (C28-C40)	1130	200	"	1000	ND	113	70-130	0.516	35	
Surrogate: o-Terphenyl	41		"	49.8		82.6	50-150			

Origins Laboratory, Inc.



*The results in this report apply to the samples analyzed in accordance with the chain of custody document. This analytical report must be reproduced in its entirety.*

Eagle Environmental Consulting, LLC  
 8000 W 44th Ave  
 Wheat Ridge CO 80033

Andrew Newberry  
 Project Number: [none]  
 Project: Noble - UPV #23-0214

**Extractable Petroleum Hydrocarbons by 8015D - Quality Control**  
**Origins Laboratory, Inc.**

Analyte	Result	Reporting Limit	Units	Spike Level	Source Result	%REC	%REC Limits	RPD	RPD Limit	Notes
---------	--------	-----------------	-------	-------------	---------------	------	-------------	-----	-----------	-------

**EPA 8270E (SW846) - Semivolatile Organic Compounds - Quality Control**  
**Origins Laboratory, Inc.**

Analyte	Result	Reporting Limit	Units	Spike Level	Source Result	%REC	%REC Limits	RPD	RPD Limit	Notes
---------	--------	-----------------	-------	-------------	---------------	------	-------------	-----	-----------	-------

**Batch B4B2006 - EPA 3580**

**Blank (B4B2006-BLK1)**

Prepared: 02/20/2024 Analyzed: 02/21/2024

1-Methylnaphthalene	ND	0.002	mg/kg							U
2-Methylnaphthalene	ND	0.002	"							U
Acenaphthene	ND	0.020	"							U
Anthracene	ND	0.020	"							U
Benzo (a) anthracene	ND	0.005	"							U
Benzo (a) pyrene	ND	0.020	"							U
Benzo (b) fluoranthene	ND	0.020	"							U
Benzo (g,h,i) perylene	ND	0.020	"							U
Benzo (k) fluoranthene	ND	0.020	"							U
Chrysene	ND	0.020	"							U
Dibenz (a,h) anthracene	ND	0.020	"							U
Fluoranthene	ND	0.020	"							U
Fluorene	ND	0.020	"							U
Indeno (1,2,3-cd) pyrene	ND	0.020	"							U
Naphthalene	ND	0.002	"							U
Phenanthrene	ND	0.020	"							U
Pyrene	ND	0.020	"							U
Surrogate: Fluorene-d10	200		ug/kg	200		99.5	60-130			
Surrogate: Anthracene-d10	190		"	200		93.0	60-130			
Surrogate: Pyrene-d10	190		"	200		94.5	60-130			
Surrogate: Benzo (a) pyrene-d12	210		"	200		104	60-130			

Origins Laboratory, Inc.



*The results in this report apply to the samples analyzed in accordance with the chain of custody document. This analytical report must be reproduced in its entirety.*

Eagle Environmental Consulting, LLC  
 8000 W 44th Ave  
 Wheat Ridge CO 80033

Andrew Newberry  
 Project Number: [none]  
 Project: Noble - UPV #23-0214

**EPA 8270E (SW846) - Semivolatile Organic Compounds - Quality Control**  
**Origins Laboratory, Inc.**

Analyte	Result	Reporting Limit	Units	Spike Level	Source Result	%REC	%REC Limits	RPD	RPD Limit	Notes
---------	--------	-----------------	-------	-------------	---------------	------	-------------	-----	-----------	-------

**Batch B4B2006 - EPA 3580**

**LCS (B4B2006-BS1)**

Prepared: 02/20/2024 Analyzed: 02/21/2024

1-Methylnaphthalene	0.191	0.002	mg/kg	0.200		95.6	70-130			
2-Methylnaphthalene	0.188	0.002	"	0.200		94.1	70-130			
Acenaphthene	0.193	0.020	"	0.200		96.3	70-130			
Anthracene	0.193	0.020	"	0.200		96.7	70-130			
Benzo (a) anthracene	0.212	0.005	"	0.200		106	70-130			
Benzo (a) pyrene	0.200	0.020	"	0.200		100	70-130			
Benzo (b) fluoranthene	0.196	0.020	"	0.200		97.8	70-130			
Benzo (g,h,i) perylene	0.202	0.020	"	0.200		101	70-130			
Benzo (k) fluoranthene	0.189	0.020	"	0.200		94.6	70-130			
Chrysene	0.200	0.020	"	0.200		100	70-130			
Dibenz (a,h) anthracene	0.203	0.020	"	0.200		102	70-130			
Fluoranthene	0.191	0.020	"	0.200		95.5	70-130			
Fluorene	0.197	0.020	"	0.200		98.5	70-130			
Indeno (1,2,3-cd) pyrene	0.203	0.020	"	0.200		101	70-130			
Naphthalene	0.197	0.002	"	0.200		98.4	70-130			
Phenanthrene	0.187	0.020	"	0.200		93.6	70-130			
Pyrene	0.181	0.020	"	0.200		90.6	70-130			
Surrogate: Fluorene-d10	200		ug/kg	200		99.9	60-130			
Surrogate: Anthracene-d10	190		"	200		95.0	60-130			
Surrogate: Pyrene-d10	190		"	200		92.9	60-130			
Surrogate: Benzo (a) pyrene-d12	210		"	200		103	60-130			

**Matrix Spike (B4B2006-MS1)**

**Source: Y402326-01**

Prepared: 02/20/2024 Analyzed: 02/21/2024

1-Methylnaphthalene	0.182	0.002	mg/kg	0.200	ND	90.9	70-130			
2-Methylnaphthalene	0.180	0.002	"	0.200	ND	90.2	70-130			
Acenaphthene	0.186	0.020	"	0.200	ND	92.8	70-130			
Anthracene	0.185	0.020	"	0.200	ND	92.5	70-130			

Origins Laboratory, Inc.



*The results in this report apply to the samples analyzed in accordance with the chain of custody document. This analytical report must be reproduced in its entirety.*

Eagle Environmental Consulting, LLC  
 8000 W 44th Ave  
 Wheat Ridge CO 80033

Andrew Newberry  
 Project Number: [none]  
 Project: Noble - UPV #23-0214

**EPA 8270E (SW846) - Semivolatile Organic Compounds - Quality Control**  
**Origins Laboratory, Inc.**

Analyte	Result	Reporting Limit	Units	Spike Level	Source Result	%REC	%REC Limits	RPD	RPD Limit	Notes
---------	--------	-----------------	-------	-------------	---------------	------	-------------	-----	-----------	-------

**Batch B4B2006 - EPA 3580**

<b>Matrix Spike (B4B2006-MS1)</b>		<b>Source: Y402326-01</b>			Prepared: 02/20/2024 Analyzed: 02/21/2024					
Benzo (a) anthracene	0.203	0.005	mg/kg	0.200	ND	101	70-130			
Benzo (a) pyrene	0.197	0.020	"	0.200	ND	98.5	70-130			
Benzo (b) fluoranthene	0.189	0.020	"	0.200	0.0004	94.5	70-130			
Benzo (g,h,i) perylene	0.195	0.020	"	0.200	0.0006	97.4	70-130			
Benzo (k) fluoranthene	0.187	0.020	"	0.200	ND	93.6	70-130			
Chrysene	0.194	0.020	"	0.200	ND	96.9	70-130			
Dibenz (a,h) anthracene	0.200	0.020	"	0.200	ND	99.9	70-130			
Fluoranthene	0.186	0.020	"	0.200	ND	93.2	70-130			
Fluorene	0.190	0.020	"	0.200	ND	95.0	70-130			
Indeno (1,2,3-cd) pyrene	0.203	0.020	"	0.200	ND	101	70-130			
Naphthalene	0.187	0.002	"	0.200	ND	93.5	70-130			
Phenanthrene	0.178	0.020	"	0.200	ND	89.1	70-130			
Pyrene	0.174	0.020	"	0.200	ND	86.8	70-130			
Surrogate: Fluorene-d10	200		ug/kg	200		100	60-130			
Surrogate: Anthracene-d10	190		"	200		95.0	60-130			
Surrogate: Pyrene-d10	190		"	200		93.3	60-130			
Surrogate: Benzo (a) pyrene-d12	200		"	200		101	60-130			

<b>Matrix Spike Dup (B4B2006-MSD1)</b>		<b>Source: Y402326-01</b>			Prepared: 02/20/2024 Analyzed: 02/21/2024					
1-Methylnaphthalene	0.171	0.002	mg/kg	0.200	ND	85.3	70-130	6.37	20	
2-Methylnaphthalene	0.169	0.002	"	0.200	ND	84.4	70-130	6.58	20	
Acenaphthene	0.173	0.020	"	0.200	ND	86.4	70-130	7.17	20	
Anthracene	0.167	0.020	"	0.200	ND	83.5	70-130	10.2	20	
Benzo (a) anthracene	0.182	0.005	"	0.200	ND	91.0	70-130	10.8	20	
Benzo (a) pyrene	0.178	0.020	"	0.200	ND	88.8	70-130	10.3	20	
Benzo (b) fluoranthene	0.174	0.020	"	0.200	0.0004	87.0	70-130	8.24	20	
Benzo (g,h,i) perylene	0.177	0.020	"	0.200	0.0006	88.3	70-130	9.81	20	

Origins Laboratory, Inc.



*The results in this report apply to the samples analyzed in accordance with the chain of custody document. This analytical report must be reproduced in its entirety.*

Eagle Environmental Consulting, LLC  
 8000 W 44th Ave  
 Wheat Ridge CO 80033

Andrew Newberry  
 Project Number: [none]  
 Project: Noble - UPV #23-0214

**EPA 8270E (SW846) - Semivolatile Organic Compounds - Quality Control**  
**Origins Laboratory, Inc.**

Analyte	Result	Reporting Limit	Units	Spike Level	Source Result	%REC	%REC Limits	RPD	RPD Limit	Notes
---------	--------	-----------------	-------	-------------	---------------	------	-------------	-----	-----------	-------

**Batch B4B2006 - EPA 3580**

<b>Matrix Spike Dup (B4B2006-MSD1)</b>	<b>Source: Y402326-01</b>		<b>Prepared: 02/20/2024 Analyzed: 02/21/2024</b>							
Benzo (k) fluoranthene	0.161	0.020	mg/kg	0.200	ND	80.6	70-130	14.9	20	
Chrysene	0.180	0.020	"	0.200	ND	90.0	70-130	7.32	20	
Dibenz (a,h) anthracene	0.179	0.020	"	0.200	ND	89.6	70-130	10.9	20	
Fluoranthene	0.170	0.020	"	0.200	ND	85.0	70-130	9.21	20	
Fluorene	0.175	0.020	"	0.200	ND	87.5	70-130	8.22	20	
Indeno (1,2,3-cd) pyrene	0.183	0.020	"	0.200	ND	91.3	70-130	10.4	20	
Naphthalene	0.176	0.002	"	0.200	ND	88.2	70-130	5.84	20	
Phenanthrene	0.165	0.020	"	0.200	ND	82.5	70-130	7.67	20	
Pyrene	0.161	0.020	"	0.200	ND	80.4	70-130	7.71	20	
Surrogate: Fluorene-d10	200		ug/kg	200		100	60-130			
Surrogate: Anthracene-d10	190		"	200		94.9	60-130			
Surrogate: Pyrene-d10	190		"	200		93.4	60-130			
Surrogate: Benzo (a) pyrene-d12	200		"	200		102	60-130			

Origins Laboratory, Inc.



*The results in this report apply to the samples analyzed in accordance with the chain of custody document. This analytical report must be reproduced in its entirety.*

Eagle Environmental Consulting, LLC  
 8000 W 44th Ave  
 Wheat Ridge CO 80033

Andrew Newberry  
 Project Number: [none]  
 Project: Noble - UPV #23-0214

**Classical Chemistry Parameters - Quality Control**  
**Origins Laboratory, Inc.**

Analyte	Result	Reporting Limit	Units	Spike Level	Source Result	%REC	%REC Limits	RPD	RPD Limit	Notes
---------	--------	-----------------	-------	-------------	---------------	------	-------------	-----	-----------	-------

**Batch B4B1904 - Saturated Paste Metals**

**Blank (B4B1904-BLK1)**

Prepared: 02/19/2024 Analyzed: 02/20/2024

SAR	ND	0.0100	SAR							
Calcium PPM	ND	10.0	mg/L							
Magnesium PPM	ND	10.0	"							
Sodium PPM	ND	10.0	"							

**Duplicate (B4B1904-DUP1)**

**Source: Y402373-01**

Prepared: 02/19/2024 Analyzed: 02/20/2024

Calcium PPM	335	10.0	mg/L		371			10.1	50	
SAR	ND	0.0100	SAR		3.37				200	
Magnesium PPM	96.0	10.0	mg/L		104			8.47	50	
Sodium PPM	250	10.0	"		285			13.1	50	

**Batch B4B1910 - DTPA Sorbitol Preparation**

**Blank (B4B1910-BLK1)**

Prepared: 02/19/2024 Analyzed: 02/20/2024

Boron	ND	0.100	mg/L							
-------	----	-------	------	--	--	--	--	--	--	--

**Duplicate (B4B1910-DUP1)**

**Source: Y402373-01**

Prepared: 02/19/2024 Analyzed: 02/20/2024

Boron	0.110	0.101	mg/L		0.0998			9.31	50	
-------	-------	-------	------	--	--------	--	--	------	----	--

Origins Laboratory, Inc.



*The results in this report apply to the samples analyzed in accordance with the chain of custody document. This analytical report must be reproduced in its entirety.*

Eagle Environmental Consulting, LLC  
 8000 W 44th Ave  
 Wheat Ridge CO 80033

Andrew Newberry  
 Project Number: [none]  
 Project: Noble - UPV #23-0214

**Saturated Paste - Quality Control**  
**Origins Laboratory, Inc.**

Analyte	Result	Reporting Limit	Units	Spike Level	Source Result	%REC	%REC Limits	RPD	RPD Limit	Notes
<b>Batch B4B1912 - Saturated Paste pH/EC</b>										
<b>Blank (B4B1912-BLK1)</b>					Prepared: 02/19/2024 Analyzed: 02/20/2024					
Specific Conductance (EC)	ND	0.00500	mmhos/cm							
<b>Duplicate (B4B1912-DUP1)</b>		<b>Source: Y402373-01</b>			Prepared: 02/19/2024 Analyzed: 02/20/2024					
pH	7.68		pH Units		7.82			1.81	25	
Specific Conductance (EC)	2.96	0.00500	mmhos/cm		2.78			6.36	25	

Origins Laboratory, Inc.



*The results in this report apply to the samples analyzed in accordance with the chain of custody document. This analytical report must be reproduced in its entirety.*

Eagle Environmental Consulting, LLC  
8000 W 44th Ave  
Wheat Ridge CO 80033

Andrew Newberry  
Project Number: [none]  
Project: Noble - UPV #23-0214

---

### Notes and Definitions

U Sample is Non-Detect.

ND Analyte NOT DETECTED at or above the reporting limit

RPD Relative Percent Difference

All soil results are reported at a wet weight basis.

Origins Laboratory, Inc.



*The results in this report apply to the samples analyzed in accordance with the chain of custody document. This analytical report must be reproduced in its entirety.*

---

Jordan A. Bynon, Project Manager