

# **CRESTONE PEAK RESOURCES**

**ADAMS COUNTY**

**SEC 28-T3S-R65W**

**FLORIDA 3-65 27-26 4BH**

**OWB**

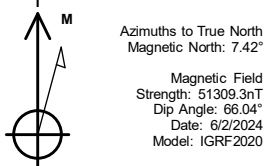
**Design: FINAL SURVEY**

## **Standard Survey Report**

**17 June, 2024**

Project: ADAMS COUNTY  
Site: SEC 28-T3S-R65W  
Well: FLORIDA 3-65 27-26 4BH  
Wellbore: OWB  
Design: FINAL SURVEY

PROJECT DETAILS: ADAMS COUNTY  
Geodetic System: US State Plane 1983  
Datum: North American Datum 1983  
Ellipsoid: GRS 1980  
Zone: Colorado Northern Zone  
System Datum: Mean Sea Level

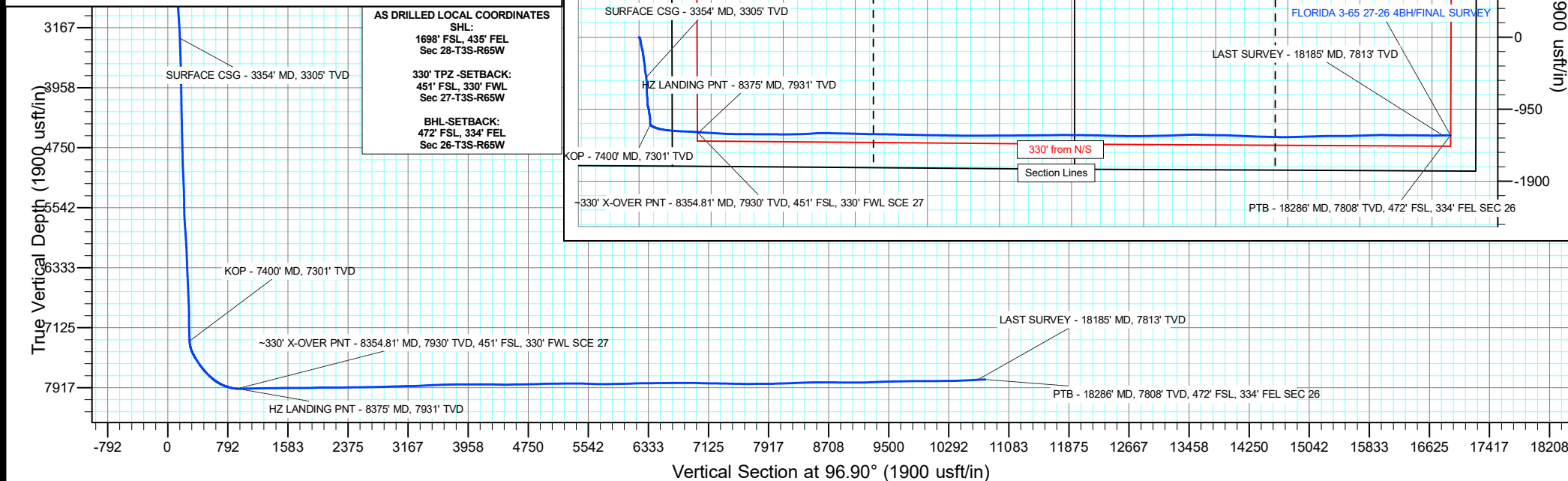
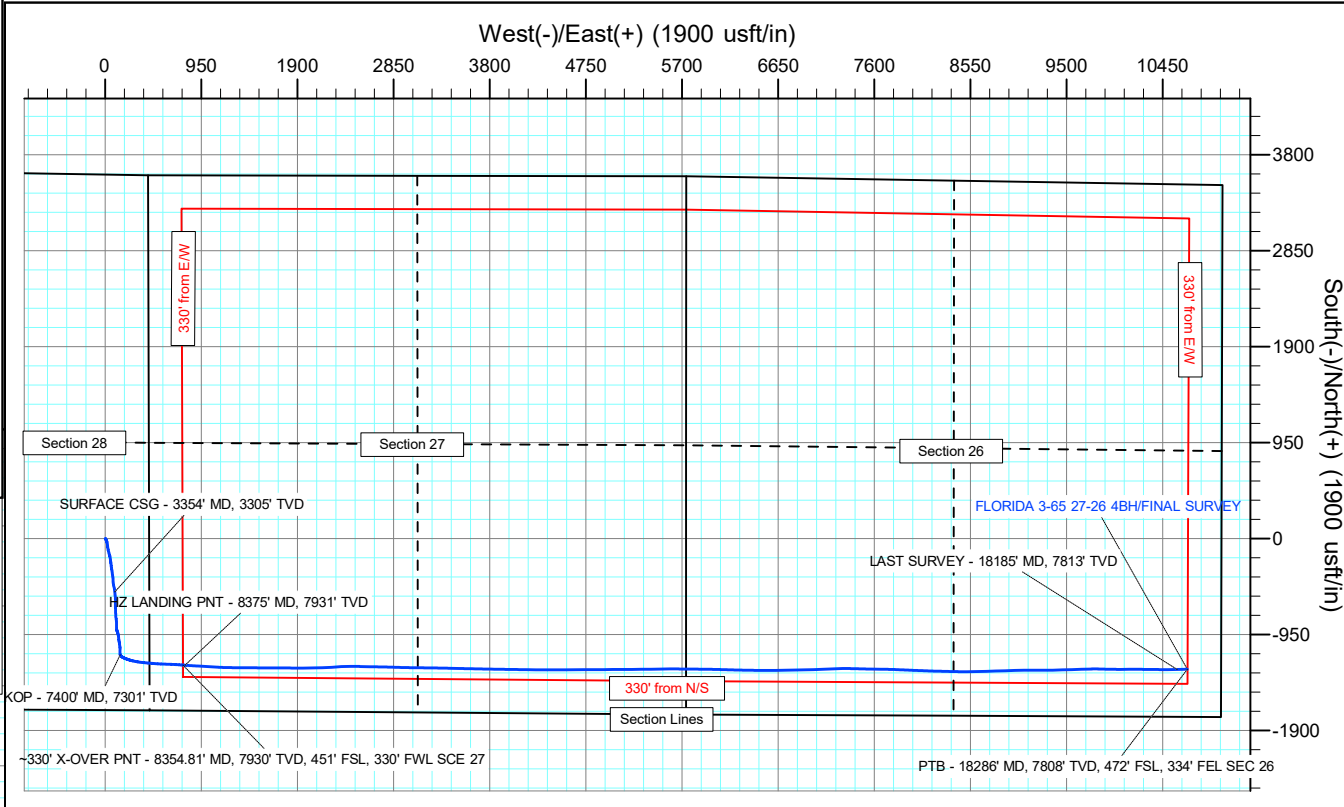
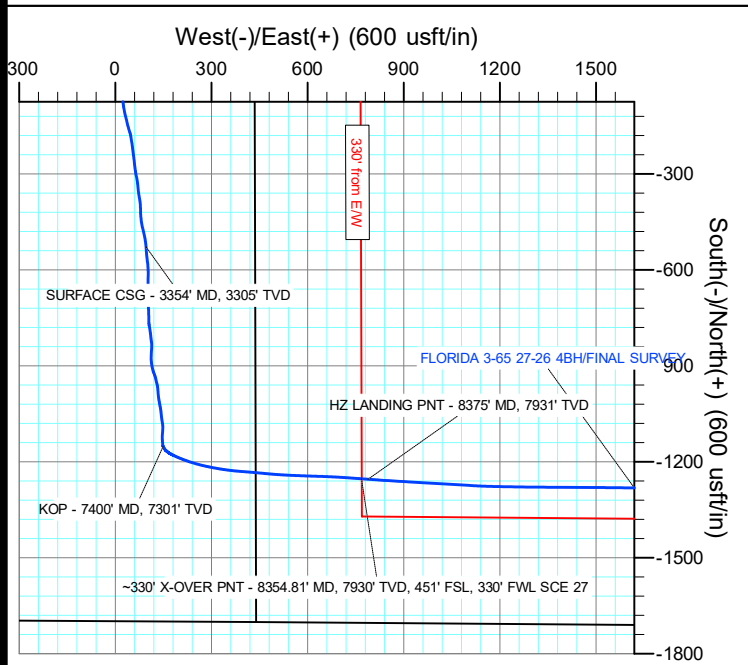


WELL DETAILS: FLORIDA 3-65 27-26 4BH

+N/-S	+E/-W	Northing	Easting	5586.00	Latitude	Longitude	Slot
0.00	0.00	1156231.41	3235876.82		39.759159°N	104.660995°W	

ANNOTATIONS

MD	Inc	Azi	TVD	+N/-S	+E/-W	Vsect	Departure	Annotation
3354.00	9.69	175.44	3304.88	-528.38	96.06	158.86	540.93	SURFACE CSG - 3354' MD, 3305' TVD
7400.00	9.58	158.26	7301.00	-1152.05	149.32	286.67	1171.74	KOP - 7400' MD, 7301' TVD
8354.81	85.73	94.05	7930.07	-1252.80	768.41	913.38	1809.76	~330' X-OVER PNT - 8354.81' MD, 7930' TVD, 451' FSL, 330' FWL SCE 27
8375.00	87.91	94.02	7931.18	-1254.22	788.52	933.51	1829.89	HZ LANDING PNT - 8375' MD, 7931' TVD
18185.00	93.11	88.78	7812.98	-1296.45	10592.96	10671.99	11637.25	LAST SURVEY - 18185' MD, 7813' TVD
18286.00	93.11	88.78	7807.50	-1294.30	10693.79	10771.83	11738.10	PTB - 18286' MD, 7808' TVD, 472' FSL, 334' FEL SEC 26



## Civitas Resources

## Survey Report

<b>Company:</b>	CRESTONE PEAK RESOURCES	<b>Local Co-ordinate Reference:</b>	Well FLORIDA 3-65 27-26 4BH
<b>Project:</b>	ADAMS COUNTY	<b>TVD Reference:</b>	KB 25' @ 5611.00usft
<b>Site:</b>	SEC 28-T3S-R65W	<b>MD Reference:</b>	KB 25' @ 5611.00usft
<b>Well:</b>	FLORIDA 3-65 27-26 4BH	<b>North Reference:</b>	True
<b>Wellbore:</b>	OWB	<b>Survey Calculation Method:</b>	Minimum Curvature
<b>Design:</b>	FINAL SURVEY	<b>Database:</b>	EDM

<b>Project</b>	ADAMS COUNTY		
<b>Map System:</b>	US State Plane 1983	<b>System Datum:</b>	Mean Sea Level
<b>Geo Datum:</b>	North American Datum 1983		
<b>Map Zone:</b>	Colorado Northern Zone		Using geodetic scale factor

<b>Site</b>	SEC 28-T3S-R65W		
<b>Site Position:</b>		<b>Northing:</b>	1,154,535.24 usft
<b>From:</b>	Lat/Long	<b>Easting:</b>	3,236,332.63 usft
<b>Position Uncertainty:</b>	0.00 usft	<b>Slot Radius:</b>	13.200 in
		<b>Latitude:</b>	39.754491°N
		<b>Longitude:</b>	104.659431°W
		<b>Grid Convergence:</b>	0.54 °

Well	FLORIDA 3-65 27-26 4BH					
Well Position	+N/-S	0.00 usft	Northing:	1,156,231.40 usft	Latitude:	39.759159°N
	+E/-W	0.00 usft	Easting:	3,235,876.82 usft	Longitude:	104.660995°W
Position Uncertainty		0.00 usft	Wellhead Elevation:	usft	Ground Level:	5,586.00 usft

<b>Wellbore</b>	OWB				
<b>Magnetics</b>	<b>Model Name</b>	<b>Sample Date</b>	<b>Declination (°)</b>	<b>Dip Angle (°)</b>	<b>Field Strength (nT)</b>
	IGRF2020	6/2/2024	7.42	66.04	51,309.26559062

<b>Design</b>	FINAL SURVEY				
<b>Audit Notes:</b>					
<b>Version:</b>	1.0	<b>Phase:</b>	ACTUAL	<b>Tie On Depth:</b>	0.00
<b>Vertical Section:</b>	<b>Depth From (TVD) (usft)</b>	<b>+N/-S (usft)</b>	<b>+E/-W (usft)</b>	<b>Direction (°)</b>	
	0.00	0.00	0.00	96.90	

<b>Survey Program</b>	<b>Date</b>	6/17/2024			
<b>From (usft)</b>	<b>To (usft)</b>	<b>Survey (Wellbore)</b>	<b>Tool Name</b>	<b>Description</b>	
209.00	3,224.00	SURFACE SURVEY (OWB)	MWD OWSG	OWSG MWD - Standard	
3,387.00	18,286.00	FINAL SURVEY (OWB)	MWD OWSG	OWSG MWD - Standard	

<b>Survey</b>										
<b>Measured Depth (usft)</b>	<b>Inclination (°)</b>	<b>Azimuth (°)</b>	<b>Vertical Depth (usft)</b>	<b>+N/-S (usft)</b>	<b>+E/-W (usft)</b>	<b>Vertical Section (usft)</b>	<b>Dogleg Rate (°/100ft)</b>	<b>Build Rate (°/100ft)</b>	<b>Turn Rate (°/100ft)</b>	
0.00	0.00	0.00	0.00	0.00	0.00	0.00	0.00	0.00	0.00	
209.00	1.06	104.51	208.99	-0.48	1.87	1.92	0.51	0.51	0.00	
300.00	2.17	142.80	299.95	-2.07	3.73	3.95	1.64	1.22	42.08	
391.00	4.51	150.21	390.79	-6.55	6.55	7.29	2.61	2.57	8.14	
480.00	7.03	154.79	479.33	-14.51	10.61	12.27	2.88	2.83	5.15	
575.00	8.57	160.08	573.45	-26.43	15.49	18.56	1.79	1.62	5.57	
668.00	10.69	169.20	665.14	-41.42	19.47	24.31	2.80	2.28	9.81	
762.00	11.27	172.11	757.42	-59.08	22.37	29.30	0.85	0.62	3.10	
858.00	10.83	174.49	851.64	-77.35	24.52	33.64	0.66	-0.46	2.48	
952.00	8.71	170.52	944.28	-93.16	26.54	37.54	2.37	-2.26	-4.22	

# Civitas Resources

## Survey Report

<b>Company:</b>	CRESTONE PEAK RESOURCES	<b>Local Co-ordinate Reference:</b>	Well FLORIDA 3-65 27-26 4BH
<b>Project:</b>	ADAMS COUNTY	<b>TVD Reference:</b>	KB 25' @ 5611.00usft
<b>Site:</b>	SEC 28-T3S-R65W	<b>MD Reference:</b>	KB 25' @ 5611.00usft
<b>Well:</b>	FLORIDA 3-65 27-26 4BH	<b>North Reference:</b>	True
<b>Wellbore:</b>	OWB	<b>Survey Calculation Method:</b>	Minimum Curvature
<b>Design:</b>	FINAL SURVEY	<b>Database:</b>	EDM

Survey									
Measured Depth (usft)	Inclination (°)	Azimuth (°)	Vertical Depth (usft)	+N/-S (usft)	+E/-W (usft)	Vertical Section (usft)	Dogleg Rate (°/100ft)	Build Rate (°/100ft)	Turn Rate (°/100ft)
1,046.00	8.62	167.97	1,037.20	-107.07	29.18	41.84	0.42	-0.10	-2.71
1,141.00	9.37	165.50	1,131.04	-121.52	32.60	46.97	0.89	0.79	-2.60
1,237.00	9.72	167.31	1,225.71	-136.99	36.34	52.54	0.48	0.36	1.89
1,331.00	10.08	164.79	1,318.31	-152.67	40.24	58.29	0.60	0.38	-2.68
1,426.00	9.81	161.75	1,411.88	-168.38	44.96	64.86	0.62	-0.28	-3.20
1,521.00	11.40	170.04	1,505.26	-185.32	49.11	71.03	2.32	1.67	8.73
1,615.00	11.18	172.24	1,597.44	-203.50	51.95	76.03	0.51	-0.23	2.34
1,710.00	12.11	172.90	1,690.48	-222.51	54.43	80.77	0.99	0.98	0.69
1,806.00	13.61	172.46	1,784.07	-243.70	57.15	86.02	1.57	1.56	-0.46
1,900.00	12.68	174.36	1,875.61	-264.93	59.62	91.02	1.09	-0.99	2.02
1,994.00	11.45	171.80	1,967.53	-284.44	61.96	95.69	1.43	-1.31	-2.72
2,090.00	9.59	169.73	2,061.92	-301.74	64.75	100.54	1.98	-1.94	-2.16
2,184.00	10.12	168.72	2,154.53	-317.54	67.76	105.42	0.59	0.56	-1.07
2,279.00	9.37	175.55	2,248.16	-333.44	69.99	109.55	1.45	-0.79	7.19
2,373.00	9.77	173.83	2,340.85	-349.00	71.44	112.86	0.52	0.43	-1.83
2,466.00	9.81	171.01	2,432.50	-364.67	73.53	116.81	0.52	0.04	-3.03
2,561.00	10.52	169.51	2,526.01	-381.19	76.37	121.62	0.80	0.75	-1.58
2,655.00	11.22	177.53	2,618.32	-398.76	78.33	125.68	1.77	0.74	8.53
2,751.00	9.94	179.20	2,712.69	-416.38	78.85	128.31	1.37	-1.33	1.74
2,845.00	10.65	174.71	2,805.18	-433.14	79.76	131.23	1.14	0.76	-4.78
2,940.00	11.18	172.11	2,898.46	-451.00	81.84	135.43	0.76	0.56	-2.74
3,035.00	11.27	166.56	2,991.65	-469.16	85.26	141.01	1.14	0.09	-5.84
3,130.00	11.62	166.56	3,084.76	-487.49	89.64	147.57	0.37	0.37	0.00
3,224.00	10.83	170.83	3,176.96	-505.42	93.25	153.30	1.22	-0.84	4.54
3,354.00	9.69	175.44	3,304.88	-528.38	96.06	158.86	1.08	-0.88	3.54
SURFACE CSG - 3354' MD, 3305' TVD									
3,387.00	9.41	176.78	3,337.42	-533.84	96.44	159.88	1.08	-0.84	4.07
3,482.00	9.06	174.58	3,431.19	-549.04	97.58	162.84	0.52	-0.37	-2.32
3,578.00	8.31	173.74	3,526.09	-563.46	99.05	166.04	0.79	-0.78	-0.87
3,672.00	7.42	171.45	3,619.21	-576.22	100.69	169.20	1.00	-0.95	-2.44
3,766.00	7.95	177.49	3,712.36	-588.71	101.88	171.88	1.03	0.56	6.43
3,861.00	6.85	176.43	3,806.57	-600.93	102.52	173.98	1.17	-1.16	-1.12
3,954.00	9.46	181.23	3,898.62	-614.11	102.70	175.75	2.90	2.81	5.16
4,049.00	8.22	180.61	3,992.49	-628.71	102.46	177.26	1.31	-1.31	-0.65
4,144.00	6.58	178.85	4,086.70	-640.94	102.50	178.77	1.74	-1.73	-1.85
4,238.00	6.85	183.87	4,180.05	-651.92	102.23	179.82	0.69	0.29	5.34
4,332.00	9.77	178.54	4,273.06	-665.49	102.05	181.28	3.21	3.11	-5.67
4,427.00	8.00	177.53	4,366.91	-680.15	102.54	183.53	1.87	-1.86	-1.06
4,522.00	8.66	177.84	4,460.91	-693.90	103.10	185.73	0.70	0.69	0.33
4,616.00	7.60	180.13	4,553.97	-707.19	103.35	187.58	1.18	-1.13	2.44
4,711.00	9.68	177.40	4,647.88	-721.45	103.70	189.64	2.23	2.19	-2.87
4,806.00	8.18	178.06	4,741.73	-736.19	104.29	191.99	1.58	-1.58	0.69
4,901.00	7.82	179.20	4,835.80	-749.41	104.61	193.90	0.41	-0.38	1.20

# Civitas Resources

## Survey Report

<b>Company:</b>	CRESTONE PEAK RESOURCES	<b>Local Co-ordinate Reference:</b>	Well FLORIDA 3-65 27-26 4BH
<b>Project:</b>	ADAMS COUNTY	<b>TVD Reference:</b>	KB 25' @ 5611.00usft
<b>Site:</b>	SEC 28-T3S-R65W	<b>MD Reference:</b>	KB 25' @ 5611.00usft
<b>Well:</b>	FLORIDA 3-65 27-26 4BH	<b>North Reference:</b>	True
<b>Wellbore:</b>	OWB	<b>Survey Calculation Method:</b>	Minimum Curvature
<b>Design:</b>	FINAL SURVEY	<b>Database:</b>	EDM

Survey										
Measured Depth (usft)	Inclination (°)	Azimuth (°)	Vertical Depth (usft)	+N/-S (usft)	+E/-W (usft)	Vertical Section (usft)	Dogleg Rate (°/100ft)	Build Rate (°/100ft)	Turn Rate (°/100ft)	
4,996.00	7.07	179.47	4,930.00	-761.71	104.75	195.52	0.79	-0.79	0.28	
5,090.00	10.61	170.74	5,022.88	-776.05	106.20	198.68	4.02	3.77	-9.29	
5,185.00	9.63	170.65	5,116.40	-792.52	108.90	203.34	1.03	-1.03	-0.09	
5,280.00	11.14	174.97	5,209.84	-809.50	110.99	207.46	1.79	1.59	4.55	
5,374.00	9.06	170.26	5,302.38	-825.84	113.04	211.45	2.38	-2.21	-5.01	
5,469.00	10.87	184.05	5,395.95	-842.15	113.68	214.04	3.14	1.91	14.52	
5,564.00	10.52	183.26	5,489.30	-859.75	112.55	215.04	0.40	-0.37	-0.83	
5,659.00	9.28	180.13	5,582.89	-876.07	112.04	216.49	1.42	-1.31	-3.29	
5,753.00	11.93	172.11	5,675.28	-893.27	113.36	219.87	3.22	2.82	-8.53	
5,848.00	10.21	165.01	5,768.51	-911.14	116.88	225.51	2.31	-1.81	-7.47	
5,943.00	8.79	157.21	5,862.21	-925.96	121.87	232.25	2.01	-1.49	-8.21	
6,038.00	10.34	168.23	5,955.90	-941.00	126.42	238.58	2.52	1.63	11.60	
6,132.00	8.97	164.66	6,048.56	-956.33	130.08	244.05	1.59	-1.46	-3.80	
6,227.00	10.16	175.77	6,142.25	-971.83	132.66	248.47	2.31	1.25	11.69	
6,321.00	9.37	175.11	6,234.89	-987.72	133.92	251.64	0.85	-0.84	-0.70	
6,415.00	7.91	171.49	6,327.82	-1,001.74	135.53	254.92	1.66	-1.55	-3.85	
6,511.00	9.54	169.73	6,422.70	-1,016.11	137.93	259.02	1.72	1.70	-1.83	
6,606.00	8.22	168.63	6,516.56	-1,030.51	140.67	263.48	1.40	-1.39	-1.16	
6,700.00	10.91	174.44	6,609.25	-1,045.96	142.86	267.50	3.04	2.86	6.18	
6,794.00	9.68	172.73	6,701.74	-1,062.65	144.72	271.36	1.35	-1.31	-1.82	
6,890.00	8.18	169.51	6,796.57	-1,077.37	146.99	275.38	1.65	-1.56	-3.35	
6,984.00	7.78	178.54	6,889.66	-1,090.31	148.37	278.30	1.40	-0.43	9.61	
7,079.00	9.54	183.61	6,983.58	-1,104.59	148.03	279.69	2.02	1.85	5.34	
7,174.00	7.78	185.37	7,077.49	-1,118.85	146.94	280.31	1.87	-1.85	1.85	
7,269.00	9.10	174.80	7,171.47	-1,132.74	147.02	282.06	2.14	1.39	-11.13	
7,365.00	7.95	176.60	7,266.40	-1,146.93	148.10	284.84	1.23	-1.20	1.87	
7,400.00	9.58	158.26	7,301.00	-1,152.05	149.32	286.67	9.19	4.67	-52.39	
KOP - 7400' MD, 7301' TVD										
7,460.00	13.74	139.98	7,359.77	-1,162.15	155.76	294.27	9.19	6.93	-30.47	
7,555.00	25.81	115.66	7,449.14	-1,179.84	181.79	322.24	15.13	12.71	-25.60	
7,650.00	32.74	109.31	7,531.98	-1,197.32	224.74	366.98	7.98	7.29	-6.68	
7,743.00	35.00	103.14	7,609.21	-1,211.70	274.47	418.07	4.42	2.43	-6.63	
7,838.00	40.12	99.05	7,684.51	-1,222.72	331.27	475.79	5.99	5.39	-4.31	
7,933.00	46.27	94.37	7,753.75	-1,230.16	395.80	540.75	7.30	6.47	-4.93	
8,028.00	52.32	95.56	7,815.68	-1,236.42	467.51	612.69	6.44	6.37	1.25	
8,123.00	62.70	92.57	7,866.65	-1,241.98	547.33	692.59	11.24	10.93	-3.15	
8,217.00	71.81	91.64	7,902.95	-1,245.13	633.87	778.88	9.73	9.69	-0.99	
8,313.00	81.22	94.11	7,925.32	-1,249.85	726.99	871.90	10.12	9.80	2.57	
8,354.81	85.73	94.05	7,930.07	-1,252.80	768.41	913.38	10.79	10.79	-0.14	
~330' X-OVER PNT - 8354.81' MD, 7930' TVD, 451' FSL, 330' FWL SCE 27										
8,375.00	87.91	94.02	7,931.19	-1,254.22	788.52	933.51	10.79	10.79	-0.14	
HZ LANDING PNT - 8375' MD, 7931' TVD										
8,408.00	91.47	93.98	7,931.36	-1,256.53	821.43	966.46	10.79	10.79	-0.14	
8,504.00	91.30	93.49	7,929.04	-1,262.78	917.20	1,062.28	0.54	-0.18	-0.51	

# Civitas Resources

## Survey Report

<b>Company:</b>	CRESTONE PEAK RESOURCES	<b>Local Co-ordinate Reference:</b>	Well FLORIDA 3-65 27-26 4BH
<b>Project:</b>	ADAMS COUNTY	<b>TVD Reference:</b>	KB 25' @ 5611.00usft
<b>Site:</b>	SEC 28-T3S-R65W	<b>MD Reference:</b>	KB 25' @ 5611.00usft
<b>Well:</b>	FLORIDA 3-65 27-26 4BH	<b>North Reference:</b>	True
<b>Wellbore:</b>	OWB	<b>Survey Calculation Method:</b>	Minimum Curvature
<b>Design:</b>	FINAL SURVEY	<b>Database:</b>	EDM

Survey										
Measured Depth (usft)	Inclination (°)	Azimuth (°)	Vertical Depth (usft)	+N/-S (usft)	+E/-W (usft)	Vertical Section (usft)	Dogleg Rate (°/100ft)	Build Rate (°/100ft)	Turn Rate (°/100ft)	
8,598.00	91.21	93.27	7,926.98	-1,268.32	1,011.01	1,156.08	0.25	-0.10	-0.23	
8,693.00	90.99	93.32	7,925.16	-1,273.78	1,105.84	1,250.88	0.24	-0.23	0.05	
8,787.00	91.34	91.07	7,923.25	-1,277.38	1,199.74	1,344.54	2.42	0.37	-2.39	
8,882.00	90.77	90.58	7,921.50	-1,278.75	1,294.72	1,438.99	0.79	-0.60	-0.52	
8,977.00	90.19	90.36	7,920.70	-1,279.52	1,389.71	1,533.38	0.65	-0.61	-0.23	
9,072.00	89.13	90.32	7,921.27	-1,280.09	1,484.71	1,627.76	1.12	-1.12	-0.04	
9,166.00	90.85	90.67	7,921.28	-1,280.90	1,578.70	1,721.17	1.87	1.83	0.37	
9,261.00	91.03	89.83	7,919.73	-1,281.32	1,673.68	1,815.52	0.90	0.19	-0.88	
9,355.00	91.38	90.45	7,917.75	-1,281.54	1,767.66	1,908.84	0.76	0.37	0.66	
9,450.00	91.78	90.67	7,915.13	-1,282.47	1,862.62	2,003.22	0.48	0.42	0.23	
9,544.00	89.62	89.79	7,913.98	-1,282.85	1,956.61	2,096.57	2.48	-2.30	-0.94	
9,639.00	89.40	89.22	7,914.79	-1,282.03	2,051.60	2,190.78	0.64	-0.23	-0.60	
9,733.00	90.99	88.20	7,914.47	-1,279.91	2,145.57	2,283.82	2.01	1.69	-1.09	
9,827.00	90.94	85.21	7,912.89	-1,274.51	2,239.39	2,376.31	3.18	-0.05	-3.18	
9,922.00	90.54	86.71	7,911.66	-1,267.82	2,334.14	2,469.57	1.63	-0.42	1.58	
10,016.00	90.19	90.54	7,911.06	-1,265.56	2,428.10	2,562.57	4.09	-0.37	4.07	
10,112.00	91.56	91.33	7,909.60	-1,267.13	2,524.07	2,658.04	1.65	1.43	0.82	
10,207.00	91.16	91.29	7,907.34	-1,269.30	2,619.02	2,752.56	0.42	-0.42	-0.04	
10,302.00	91.56	90.72	7,905.09	-1,270.97	2,713.98	2,847.03	0.73	0.42	-0.60	
10,396.00	91.87	91.86	7,902.28	-1,273.08	2,807.91	2,940.54	1.26	0.33	1.21	
10,491.00	92.00	91.47	7,899.07	-1,275.84	2,902.82	3,035.08	0.43	0.14	-0.41	
10,586.00	91.65	91.33	7,896.04	-1,278.16	2,997.74	3,129.60	0.40	-0.37	-0.15	
10,681.00	89.62	90.45	7,894.99	-1,279.64	3,092.72	3,224.07	2.33	-2.14	-0.93	
10,776.00	93.33	90.85	7,892.54	-1,280.71	3,187.66	3,318.45	3.93	3.91	0.42	
10,870.00	93.50	90.80	7,886.95	-1,282.06	3,281.48	3,411.76	0.19	0.18	-0.05	
10,995.00	92.14	91.42	7,880.80	-1,284.48	3,406.31	3,535.97	1.20	-1.09	0.50	
11,089.00	92.36	91.42	7,877.11	-1,286.81	3,500.20	3,629.46	0.23	0.23	0.00	
11,184.00	90.63	91.07	7,874.63	-1,288.87	3,595.15	3,723.97	1.86	-1.82	-0.37	
11,277.00	90.85	91.25	7,873.43	-1,290.76	3,688.12	3,816.49	0.31	0.24	0.19	
11,371.00	90.19	90.89	7,872.57	-1,292.51	3,782.10	3,910.00	0.80	-0.70	-0.38	
11,467.00	90.28	91.16	7,872.18	-1,294.23	3,878.08	4,005.50	0.30	0.09	0.28	
11,561.00	89.93	90.80	7,872.01	-1,295.84	3,972.07	4,098.99	0.53	-0.37	-0.38	
11,657.00	89.40	90.94	7,872.57	-1,297.29	4,068.05	4,194.46	0.57	-0.55	0.15	
11,751.00	89.26	90.67	7,873.67	-1,298.62	4,162.04	4,287.92	0.32	-0.15	-0.29	
11,846.00	88.42	90.58	7,875.59	-1,299.65	4,257.01	4,382.33	0.89	-0.88	-0.09	
11,941.00	91.16	90.14	7,875.94	-1,300.25	4,352.00	4,476.70	2.92	2.88	-0.46	
12,036.00	91.34	89.97	7,873.87	-1,300.34	4,446.98	4,571.00	0.26	0.19	-0.18	
12,130.00	90.54	89.92	7,872.32	-1,300.25	4,540.96	4,664.30	0.85	-0.85	-0.05	
12,322.00	91.91	89.44	7,868.22	-1,299.18	4,732.91	4,854.73	0.76	0.71	-0.25	
12,417.00	91.03	89.31	7,865.78	-1,298.14	4,827.88	4,948.88	0.94	-0.93	-0.14	
12,512.00	91.34	89.70	7,863.82	-1,297.32	4,922.85	5,043.07	0.52	0.33	0.41	
12,606.00	90.23	89.31	7,862.53	-1,296.51	5,016.84	5,136.27	1.25	-1.18	-0.41	
12,701.00	90.28	89.97	7,862.11	-1,295.91	5,111.83	5,230.51	0.70	0.05	0.69	

# Civitas Resources

## Survey Report

<b>Company:</b>	CRESTONE PEAK RESOURCES	<b>Local Co-ordinate Reference:</b>	Well FLORIDA 3-65 27-26 4BH
<b>Project:</b>	ADAMS COUNTY	<b>TVD Reference:</b>	KB 25' @ 5611.00usft
<b>Site:</b>	SEC 28-T3S-R65W	<b>MD Reference:</b>	KB 25' @ 5611.00usft
<b>Well:</b>	FLORIDA 3-65 27-26 4BH	<b>North Reference:</b>	True
<b>Wellbore:</b>	OWB	<b>Survey Calculation Method:</b>	Minimum Curvature
<b>Design:</b>	FINAL SURVEY	<b>Database:</b>	EDM

Survey										
Measured Depth (usft)	Inclination (°)	Azimuth (°)	Vertical Depth (usft)	+N/-S (usft)	+E/-W (usft)	Vertical Section (usft)	Dogleg Rate (°/100ft)	Build Rate (°/100ft)	Turn Rate (°/100ft)	
12,796.00	91.30	89.88	7,860.80	-1,295.79	5,206.82	5,324.80	1.08	1.07	-0.09	
12,890.00	88.60	89.31	7,860.88	-1,295.12	5,300.81	5,418.02	2.94	-2.87	-0.61	
12,984.00	88.16	89.53	7,863.54	-1,294.17	5,394.77	5,511.19	0.52	-0.47	0.23	
13,079.00	87.89	88.91	7,866.81	-1,292.88	5,489.70	5,605.28	0.71	-0.28	-0.65	
13,175.00	89.62	89.39	7,868.90	-1,291.46	5,585.67	5,700.37	1.87	1.80	0.50	
13,269.00	90.41	90.89	7,868.87	-1,291.69	5,679.66	5,793.72	1.80	0.84	1.60	
13,458.00	91.74	90.23	7,865.33	-1,293.53	5,868.61	5,981.52	0.79	0.70	-0.35	
13,553.00	91.12	91.11	7,862.96	-1,294.64	5,963.58	6,075.93	1.13	-0.65	0.93	
13,648.00	92.44	91.42	7,860.00	-1,296.74	6,058.51	6,170.42	1.43	1.39	0.33	
13,743.00	90.15	91.77	7,857.86	-1,299.38	6,153.44	6,264.99	2.44	-2.41	0.37	
13,838.00	90.94	91.42	7,856.95	-1,302.03	6,248.40	6,359.57	0.91	0.83	-0.37	
13,933.00	90.01	90.85	7,856.17	-1,303.91	6,343.37	6,454.09	1.15	-0.98	-0.60	
14,028.00	90.72	90.72	7,855.56	-1,305.21	6,438.36	6,548.55	0.76	0.75	-0.14	
14,123.00	90.15	90.28	7,854.84	-1,306.04	6,533.35	6,642.95	0.76	-0.60	-0.46	
14,216.00	90.28	89.22	7,854.49	-1,305.63	6,626.35	6,735.22	1.15	0.14	-1.14	
14,311.00	91.12	89.13	7,853.33	-1,304.27	6,721.33	6,829.35	0.89	0.88	-0.09	
14,406.00	88.56	88.65	7,853.60	-1,302.43	6,816.31	6,923.42	2.74	-2.69	-0.51	
14,499.00	87.98	88.38	7,856.40	-1,300.02	6,909.23	7,015.38	0.69	-0.62	-0.29	
14,593.00	89.13	88.56	7,858.77	-1,297.51	7,003.17	7,108.33	1.24	1.22	0.19	
14,687.00	89.44	88.07	7,859.95	-1,294.74	7,097.12	7,201.27	0.62	0.33	-0.52	
14,782.00	89.26	86.62	7,861.02	-1,290.34	7,192.01	7,294.95	1.54	-0.19	-1.53	
14,877.00	88.73	89.75	7,862.69	-1,287.34	7,286.94	7,388.82	3.34	-0.56	3.29	
14,972.00	88.56	91.16	7,864.94	-1,288.09	7,381.90	7,483.19	1.49	-0.18	1.48	
15,066.00	89.70	91.82	7,866.36	-1,290.53	7,475.86	7,576.76	1.40	1.21	0.70	
15,161.00	90.28	90.76	7,866.38	-1,292.67	7,570.83	7,671.30	1.27	0.61	-1.12	
15,255.00	90.06	90.72	7,866.10	-1,293.89	7,664.82	7,764.76	0.24	-0.23	-0.04	
15,350.00	90.63	91.77	7,865.53	-1,295.95	7,759.80	7,859.30	1.26	0.60	1.11	
15,445.00	90.54	92.26	7,864.56	-1,299.29	7,854.73	7,953.94	0.52	-0.09	0.52	
15,539.00	92.05	92.83	7,862.44	-1,303.46	7,948.61	8,047.65	1.72	1.61	0.61	
15,634.00	92.36	91.86	7,858.78	-1,307.35	8,043.46	8,142.27	1.07	0.33	-1.02	
15,729.00	92.14	92.39	7,855.05	-1,310.87	8,138.32	8,236.87	0.60	-0.23	0.56	
15,824.00	92.58	91.11	7,851.14	-1,313.77	8,233.20	8,331.41	1.42	0.46	-1.35	
15,918.00	91.12	91.51	7,848.10	-1,315.91	8,327.12	8,424.91	1.61	-1.55	0.43	
16,012.00	91.30	91.16	7,846.12	-1,318.10	8,421.07	8,518.44	0.42	0.19	-0.37	
16,107.00	89.48	89.48	7,845.47	-1,318.63	8,516.06	8,612.81	2.61	-1.92	-1.77	
16,202.00	89.48	88.47	7,846.34	-1,316.93	8,611.04	8,706.89	1.06	0.00	-1.06	
16,296.00	89.44	88.51	7,847.22	-1,314.46	8,705.01	8,799.88	0.06	-0.04	0.04	
16,390.00	89.66	88.34	7,847.96	-1,311.87	8,798.97	8,892.85	0.30	0.23	-0.18	
16,484.00	89.79	88.03	7,848.41	-1,308.90	8,892.92	8,985.76	0.36	0.14	-0.33	
16,579.00	90.01	87.28	7,848.58	-1,305.01	8,987.84	9,079.53	0.82	0.23	-0.79	
16,673.00	91.43	90.80	7,847.39	-1,303.44	9,081.80	9,172.62	4.04	1.51	3.74	
16,767.00	91.74	90.06	7,844.79	-1,304.14	9,175.76	9,265.98	0.85	0.33	-0.79	
16,862.00	92.75	89.92	7,841.07	-1,304.12	9,270.69	9,360.22	1.07	1.06	-0.15	
16,956.00	91.38	89.22	7,837.69	-1,303.42	9,364.62	9,453.39	1.64	-1.46	-0.74	

# Civitas Resources

## Survey Report

<b>Company:</b>	CRESTONE PEAK RESOURCES	<b>Local Co-ordinate Reference:</b>	Well FLORIDA 3-65 27-26 4BH
<b>Project:</b>	ADAMS COUNTY	<b>TVD Reference:</b>	KB 25' @ 5611.00usft
<b>Site:</b>	SEC 28-T3S-R65W	<b>MD Reference:</b>	KB 25' @ 5611.00usft
<b>Well:</b>	FLORIDA 3-65 27-26 4BH	<b>North Reference:</b>	True
<b>Wellbore:</b>	OWB	<b>Survey Calculation Method:</b>	Minimum Curvature
<b>Design:</b>	FINAL SURVEY	<b>Database:</b>	EDM

Survey									
Measured Depth (usft)	Inclination (°)	Azimuth (°)	Vertical Depth (usft)	+N/-S (usft)	+E/-W (usft)	Vertical Section (usft)	Dogleg Rate (°/100ft)	Build Rate (°/100ft)	Turn Rate (°/100ft)
17,051.00	91.03	87.94	7,835.69	-1,301.06	9,459.57	9,547.37	1.40	-0.37	-1.35
17,146.00	92.09	87.54	7,833.10	-1,297.32	9,554.46	9,641.12	1.19	1.12	-0.42
17,240.00	90.46	88.47	7,831.01	-1,294.05	9,648.37	9,733.96	2.00	-1.73	0.99
17,335.00	91.07	88.73	7,829.74	-1,291.73	9,743.34	9,827.96	0.70	0.64	0.27
17,430.00	90.23	91.91	7,828.66	-1,292.26	9,838.32	9,922.31	3.46	-0.88	3.35
17,524.00	89.79	91.02	7,828.65	-1,294.66	9,932.28	10,015.89	1.06	-0.47	-0.95
17,619.00	90.28	89.97	7,828.59	-1,295.48	10,027.28	10,110.29	1.22	0.52	-1.11
17,713.00	90.19	89.83	7,828.20	-1,295.32	10,121.28	10,203.59	0.18	-0.10	-0.15
17,808.00	91.03	90.06	7,827.19	-1,295.23	10,216.27	10,297.88	0.92	0.88	0.24
17,903.00	91.56	91.07	7,825.05	-1,296.16	10,311.24	10,392.28	1.20	0.56	1.06
17,997.00	92.27	90.28	7,821.90	-1,297.27	10,405.18	10,485.67	1.13	0.76	-0.84
18,091.00	92.75	89.97	7,817.79	-1,297.48	10,499.09	10,578.92	0.61	0.51	-0.33
18,185.00	93.11	88.78	7,812.98	-1,296.45	10,592.96	10,671.99	1.32	0.38	-1.27
LAST SURVEY - 18185' MD, 7813' TVD									
18,286.00	93.11	88.78	7,807.50	-1,294.30	10,693.79	10,771.83	0.00	0.00	0.00
PTB - 18286' MD, 7808' TVD, 472' FSL, 334' FEL SEC 26									

Design Targets									
Target Name	Dip Angle (°)	Dip Dir. (°)	TVD (usft)	+N/-S (usft)	+E/-W (usft)	Northing (usft)	Easting (usft)	Latitude	Longitude
- hit/miss target									
- Shape									
PBHL-FLORIDA 3-65 27	0.00	0.00	7,845.00	-1,326.63	10,697.30	1,155,006.05	3,246,586.13	39.755511°N	104.622948°W
- actual wellpath misses target center by 49.63usft at 18286.00usft MD (7807.50 TVD, -1294.30 N, 10693.79 E)									
- Point									
LP-FLORIDA 3-65 27-26	0.00	0.00	7,935.00	-1,263.35	768.41	1,154,975.39	3,236,657.15	39.755691°N	104.658262°W
- actual wellpath misses target center by 11.59usft at 8355.82usft MD (7930.14 TVD, -1252.88 N, 769.42 E)									
- Point									

Design Annotations					
Measured Depth (usft)	Vertical Depth (usft)	Local Coordinates			
		+N/-S (usft)	+E/-W (usft)	Comment	
3,354.00	3,304.88	-528.38	96.06	SURFACE CSG - 3354' MD, 3305' TVD	
7,400.00	7,301.00	-1,152.05	149.32	KOP - 7400' MD, 7301' TVD	
8,354.81	7,930.07	-1,252.80	768.41	~330' X-OVER PNT - 8354.81' MD, 7930' TVD, 451' FSL, 330' FWL SCE 27	
8,375.00	7,931.19	-1,254.22	788.52	HZ LANDING PNT - 8375' MD, 7931' TVD	
18,185.00	7,812.98	-1,296.45	10,592.96	LAST SURVEY - 18185' MD, 7813' TVD	
18,286.00	7,807.50	-1,294.30	10,693.79	PTB - 18286' MD, 7808' TVD, 472' FSL, 334' FEL SEC 26	

Checked By: _____	Approved By: _____	Date: _____
-------------------	--------------------	-------------