

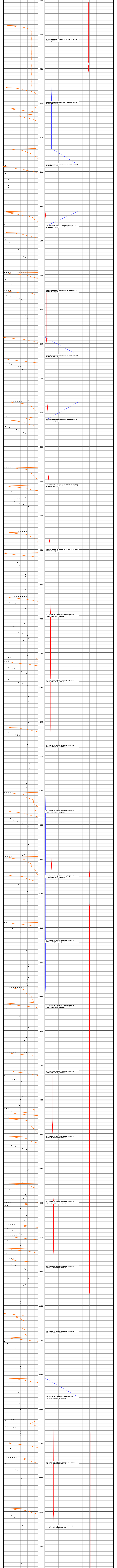
Company: Cressone Peak Resources
 Well Name: Florida 3-65 27-26 1AH
 API: 05-001-10558
 County/Parish: Adams
 State: Colorado
 Country: United States of America
 Job number: AEP-RM-240462
 Field: Wattenberg
 Rig ID: Patterson 345
 Survey Company: Altitude Energy Partners LLC
 Day MWD: Steven Vanhalla
 Night MWD: Jacey Kellerman

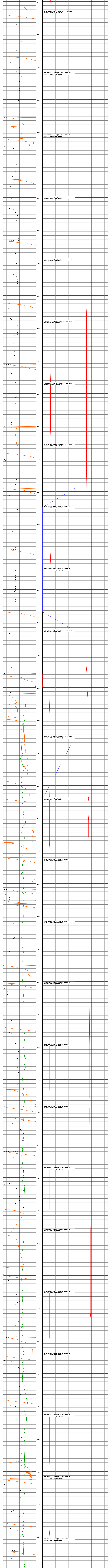
Log measurements: GAMMA
 Depth measured from: BGS
 Maximum temperature:
 Start: 0 ft Date: 05/05/2024
 Casing: 0 ft
 End: 3499 ft
 Surface: 3499 ft Casing Size: 9 5/8" Hole Size: 13.5"
 Intermediate:
 Intermediate2:
 Mud Type: CBM
 Density:
 Viscosity:
 Rm:
 Rmf:
 Rmc:
 Elevations
 KB: 5610
 DF: 5610
 GL: 5585

Run	Tool SN	Gamma Cal	Bit Size	Survey	Offsets Gamma	Reis	Mud Type	Date	Depth	Start	End	Start	End
1	SOC1071	N/A	13.5"	69.00 ft		N/A	WBM	8.9	0 ft	3509 ft		05/05/2024 18:30	05/06/2024 05:45
2	XGM343	8.243	8.6"	69.00 ft	43.75 ft	10963 ft	CBM	9.2	3509 ft	14852 ft		06/15/2024 08:30	06/17/2024 02:15
3	XGM343	8.243	8.6"	69.00 ft	43.75 ft	10963 ft	CBM	9.2	14852 ft			06/17/2024 02:45	
4													
5													
6													
7													
8													
9													
10													
11													

Plot: 3-65-27-26-1AH-ROP-7-90-ft-1P-8-822-ft-10-ft

Altitude Energy Partners LLC uses its best efforts to provide customers with accurate information and interpretations in conjunction with services performed but will not be held liable or responsible for the accuracy of such information or interpretation.





#25 MCD(2466.00) Inc(25.63) Arm(356.13) TVD(2429.96)
VS(166.50) NI-S(166.50) E/W(2.51)

#26 MCD(2500.00) Inc(25.10) Arm(350.52) TVD(2429.96)
VS(171.59) NI-S(166.41) E/W(2.38)

#27 MCD(2650.00) Inc(27.73) Arm(358.29) TVD(2515.39)
VS(177.50) NI-S(177.49) E/W(2.57)

#28 MCD(2750.00) Inc(27.34) Arm(357.72) TVD(2600.12)
VS(184.51) NI-S(170.70) E/W(2.48)

#29 MCD(2845.00) Inc(26.56) Arm(358.29) TVD(2684.92)
VS(191.37) NI-S(165.39) E/W(2.39)

#30 MCD(2845.00) Inc(25.36) Arm(357.72) TVD(2770.33)
VS(198.03) NI-S(165.13) E/W(2.38)

#31 MCD(3035.00) Inc(24.70) Arm(355.78) TVD(2856.41)
VS(203.69) NI-S(165.27) E/W(2.31)

#32 MCD(3120.00) Inc(25.45) Arm(359.75) TVD(2941.56)
VS(209.99) NI-S(163.06) E/W(2.37)

#33 MCD(3240.00) Inc(25.23) Arm(1.16) TVD(3027.42)
VS(218.28) NI-S(165.71) E/W(2.39)

#34 MCD(3310.00) Inc(23.99) Arm(0.10) TVD(3113.78)
VS(226.48) NI-S(1615.27) E/W(2.74)

#35 MCD(3413.00) Inc(22.45) Arm(359.31) TVD(3200.17)
VS(233.58) NI-S(162.23) E/W(2.56)

#36 MCD(3570.00) Inc(19.71) Arm(358.51) TVD(3322.25)
VS(244.00) NI-S(116.88) E/W(2.47)

#37 MCD(3670.00) Inc(21.43) Arm(2.74) TVD(3440.26)
VS(256.89) NI-S(143.24) E/W(2.87)

#38 MCD(3710.00) Inc(23.50) Arm(5.70) TVD(3527.11)
VS(262.56) NI-S(179.79) E/W(2.56)

#39 MCD(3850.00) Inc(22.49) Arm(5.49) TVD(3614.37)
VS(271.35) NI-S(143.49) E/W(2.17)

#40 MCD(3952.00) Inc(23.07) Arm(7.15) TVD(3706.34)
VS(282.25) NI-S(1282.21) E/W(3.13)

#41 MCD(4047.00) Inc(21.83) Arm(5.10) TVD(3788.11)
VS(293.42) NI-S(1288.51) E/W(4.13)

#42 MCD(4140.00) Inc(23.30) Arm(5.87) TVD(3875.71)
VS(304.33) NI-S(1325.07) E/W(4.51)

#43 MCD(4336.00) Inc(22.05) Arm(4.67) TVD(3962.35)
VS(314.57) NI-S(1361.29) E/W(4.29)

#44 MCD(4330.00) Inc(23.84) Arm(5.21) TVD(4048.98)
VS(324.62) NI-S(1397.79) E/W(4.25)

#45 MCD(4430.00) Inc(21.87) Arm(4.64) TVD(4136.58)
VS(334.56) NI-S(1434.27) E/W(4.41)

#46 MCD(4520.00) Inc(23.30) Arm(5.17) TVD(4223.99)
VS(342.78) NI-S(1471.29) E/W(4.09)

#47 MCD(4614.00) Inc(21.83) Arm(5.56) TVD(4310.41)
VS(356.81) NI-S(1507.58) E/W(4.03)

#48 MCD(4700.00) Inc(23.07) Arm(5.33) TVD(4398.27)
VS(367.76) NI-S(1544.24) E/W(4.07)

#49 MCD(4804.00) Inc(20.89) Arm(5.17) TVD(4486.43)
VS(379.29) NI-S(1579.29) E/W(4.75)

