

Company: Crestone Peak Resources
 Well Name: Florida 3-65 27-26 2AH
 API: 05-001-10560
 County/Parish: Adams
 State: Colorado
 Country: United States of America
 Job number: AEP-RM-240464
 Field: Wattenberg
 Rig ID: Patterson 345
 Survey Company: Altitude Energy Partners LLC
 Day MWD: Jacey Kellerman
 Night MWD: Steven Varhalla

Log measurements: GAMMA
 Depth measured from: BGS
 Maximum temperature: 279

Depth	0 ft	Date	05/03/2024
Start:	16317 ft		06/10/2024
Casing Surface:	3349 ft	Casing Size	9 5/8"
Hole Size	13.5"		

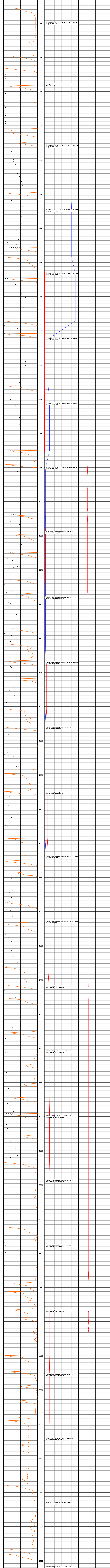
Run	Tool SN	Gamma Cal	Bit Size	Survey	Offsets
1	SOC01071	N/A	13.5"	69.00 ft	
2	XGM643	8.877	8.5"	70.00 ft	44.37 ft
3					
4					
5					
6					
7					
8					
9					
10					
11					

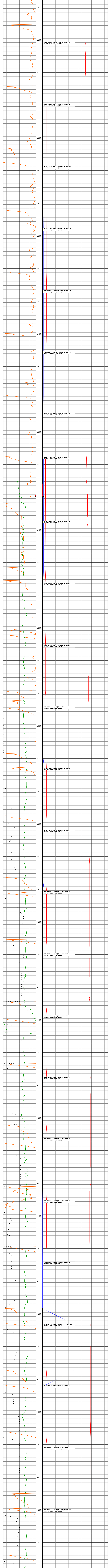
Reals	Mud Type	Weight	Depth	Start	End
N/A	WBM	8.9	0 ft	3359 ft	16317 ft
N/A	CBM	9.0	3359 ft	16317 ft	16317 ft

Intermediate2	Mud Type: CBM	Density: 9.2	Viscosity: 40	Elevations
Rm:	Rmf:	Rmc:		KB: 5610
				DF: 5610
				GL: 5585

Plot: 3-3111 Show: 3-249 ft ROP: 7.476 ft LP: 8.436 ft TO: 18.117 ft

Altitude Energy Partners LLC uses its best efforts to provide its customers with accurate information and interpretations in conjunction with services performed but will not be held liable or responsible for the accuracy of such information or interpretation.





#27 MCD(2655.00) Inc(13.39) Azim(4.86) TVDQ(2708.94)
VS(72.53) NI-S(542.13) E/W(35.73)

#28 MCD(2750.00) Inc(13.30) Azim(4.80) TVDQ(2708.56)
VS(72.49) NI-S(543.87) E/W(37.37)

#29 MCD(2845.00) Inc(13.54) Azim(5.07) TVDQ(2871.14)
VS(81.34) NI-S(534.80) E/W(39.93)

#30 MCD(2940.00) Inc(12.87) Azim(9.73) TVDQ(2893.73)
VS(87.71) NI-S(525.70) E/W(42.70)

#31 MCD(3035.00) Inc(12.24) Azim(6.60) TVDQ(2994.47)
VS(92.12) NI-S(523.93) E/W(47.42)

#32 MCD(3130.00) Inc(11.84) Azim(9.60) TVDQ(3074.49)
VS(97.48) NI-S(525.73) E/W(51.20)

#33 MCD(3225.00) Inc(13.30) Azim(8.85) TVDQ(3170.65)
VS(94.34) NI-S(482.37) E/W(54.47)

#34 MCD(3290.00) Inc(9.28) Azim(5.41) TVDQ(3236.67)
VS(97.48) NI-S(524.18) E/W(54.52)

#35 MCD(3385.00) Inc(12.70) Azim(11.42) TVDQ(3333.46)
VS(112.00) NI-S(528.24) E/W(59.52)

#36 MCD(3450.00) Inc(9.99) Azim(5.41) TVDQ(3427.19)
VS(116.52) NI-S(528.44) E/W(63.52)

#37 MCD(3575.00) Inc(8.19) Azim(7.06) TVDQ(3520.88)
VS(128.47) NI-S(528.33) E/W(69.59)

#38 MCD(3670.00) Inc(11.62) Azim(5.49) TVDQ(3613.34)
VS(124.50) NI-S(528.39) E/W(69.57)

#39 MCD(3765.00) Inc(12.20) Azim(6.60) TVDQ(3705.31)
VS(132.50) NI-S(525.24) E/W(69.53)

#40 MCD(3850.00) Inc(11.18) Azim(7.04) TVDQ(3798.32)
VS(137.78) NI-S(525.24) E/W(69.53)

#41 MCD(3950.00) Inc(12.51) Azim(7.04) TVDQ(3890.33)
VS(143.71) NI-S(525.25) E/W(69.53)

#42 MCD(4050.00) Inc(11.18) Azim(6.61) TVDQ(3983.30)
VS(148.50) NI-S(525.23) E/W(69.52)

#43 MCD(4145.00) Inc(11.30) Azim(5.87) TVDQ(4076.14)
VS(152.50) NI-S(525.23) E/W(69.53)

#44 MCD(4230.00) Inc(12.02) Azim(5.36) TVDQ(4167.85)
VS(156.50) NI-S(525.19) E/W(69.52)

#45 MCD(4325.00) Inc(13.70) Azim(3.70) TVDQ(4259.49)
VS(162.51) NI-S(525.18) E/W(69.52)

#46 MCD(4420.00) Inc(12.33) Azim(1.38) TVDQ(4352.05)
VS(168.50) NI-S(525.18) E/W(69.52)

#47 MCD(4520.00) Inc(13.21) Azim(3.80) TVDQ(4444.23)
VS(165.95) NI-S(525.15) E/W(69.52)

#48 MCD(4617.00) Inc(12.02) Azim(3.71) TVDQ(4537.45)
VS(172.50) NI-S(525.18) E/W(69.52)

#49 MCD(4710.00) Inc(13.70) Azim(3.80) TVDQ(4629.07)
VS(170.01) NI-S(525.15) E/W(69.52)

#50 MCD(4800.00) Inc(12.22) Azim(2.39) TVDQ(4721.81)
VS(172.50) NI-S(525.18) E/W(69.52)

#51 MCD(4890.00) Inc(11.50) Azim(3.80) TVDQ(4814.94)
VS(172.50) NI-S(525.18) E/W(69.52)

