

# **CRESTONE PEAK RESOURCES**

**ADAMS COUNTY**

**SEC 28-T3S-R65W**

**FLORIDA 3-65 27-26 2AH**

**OWB**

**Design: FINAL SURVEY**

## **Standard Survey Report**

**17 June, 2024**

Project: ADAMS COUNTY  
 Site: SEC 28-T3S-R65W  
 Well: FLORIDA 3-65 27-26 2AH  
 Wellbore: OWB  
 Design: FINAL SURVEY

PROJECT DETAILS: ADAMS COUNTY  
 Geodetic System: US State Plane 1983  
 Datum: North American Datum 1983  
 Ellipsoid: GRS 1980  
 Zone: Colorado Northern Zone  
 System Datum: Mean Sea Level



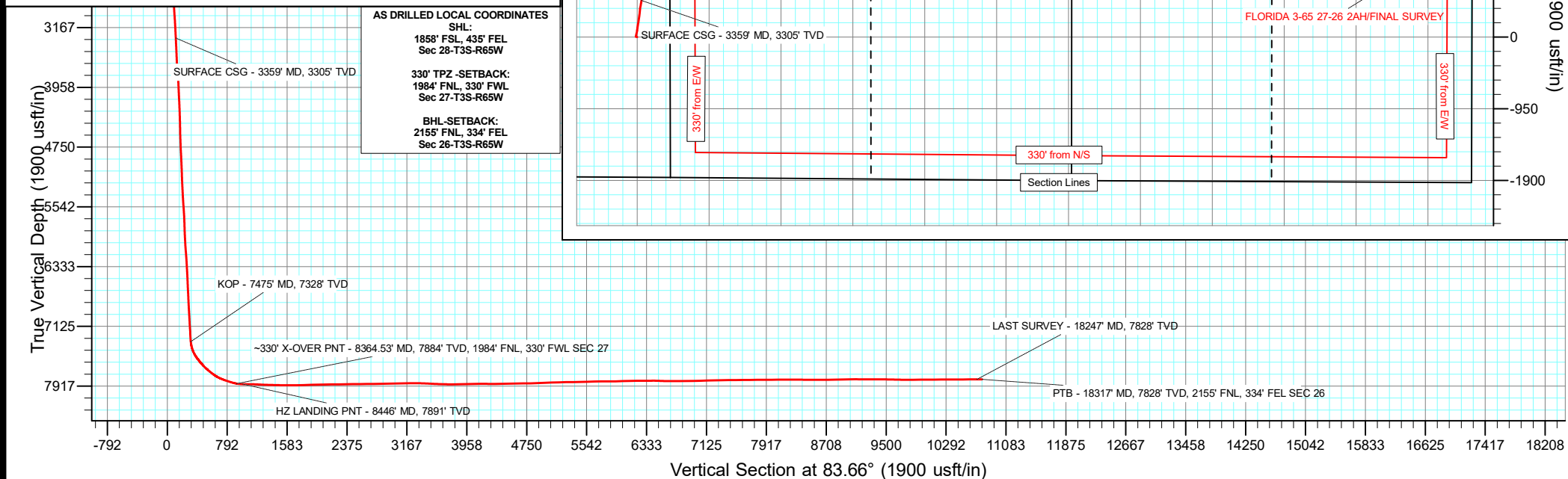
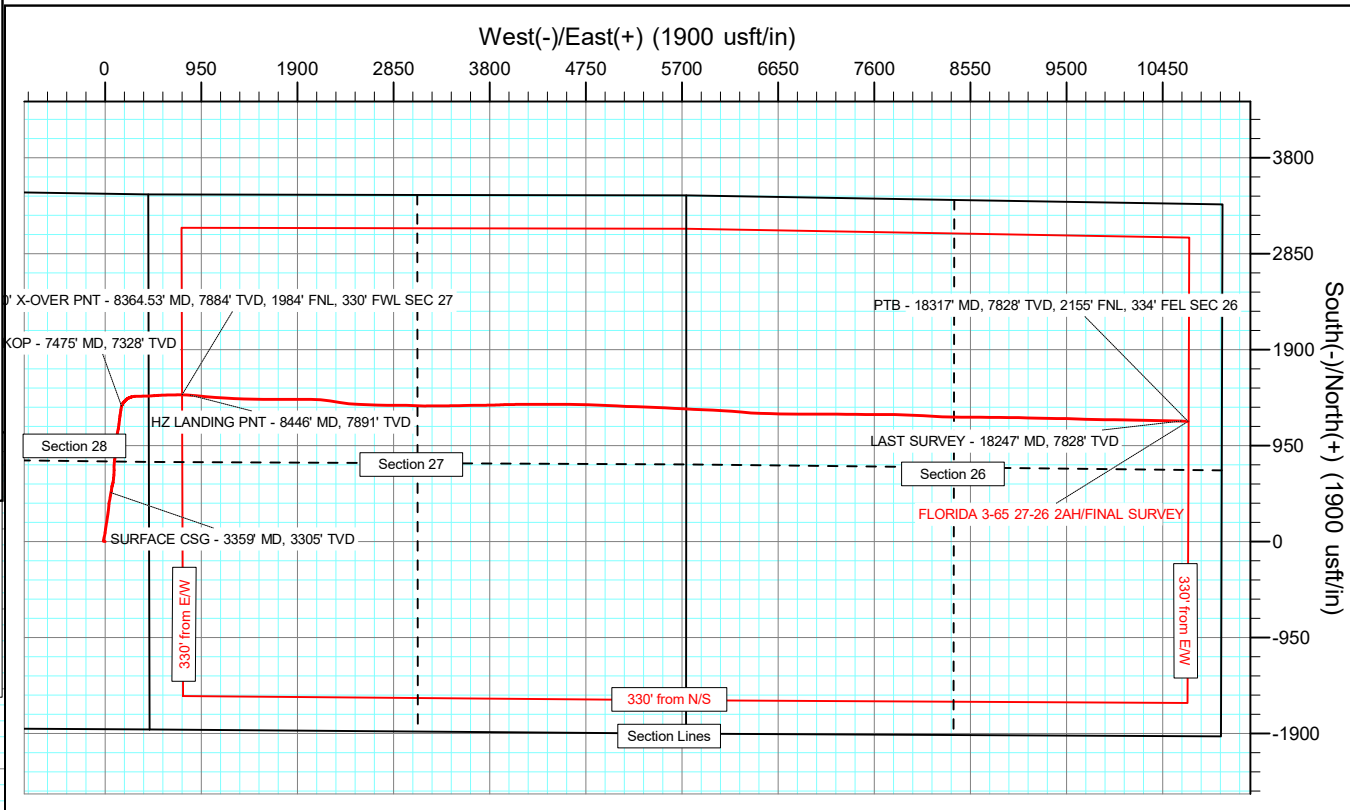
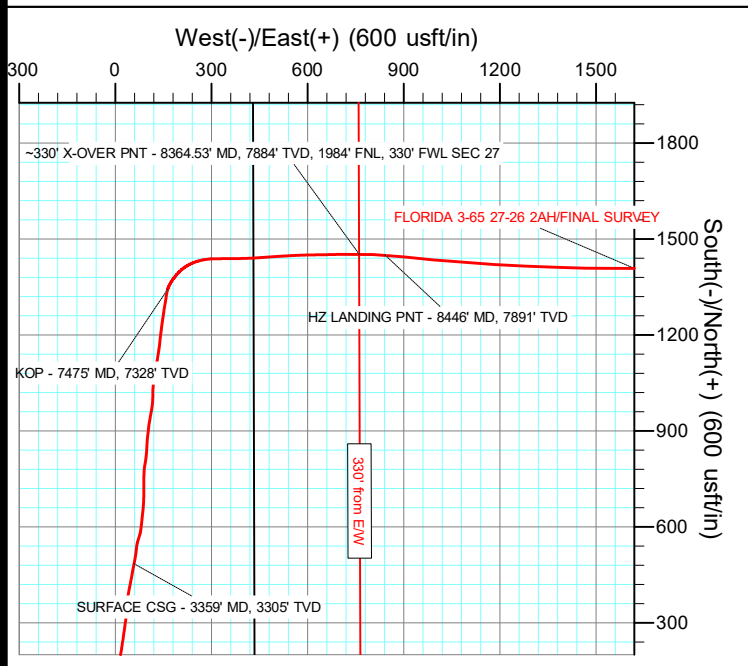
Azimuths to True North  
 Magnetic North: 7.42°  
 Magnetic Field  
 Strength: 51308.1nT  
 Dip Angle: 66.04°  
 Date: 6/7/2024  
 Model: IGRF2020

WELL DETAILS: FLORIDA 3-65 27-26 2AH

+N/-S	+E/-W	Northing	Easting	Latitude	Longitude	Slot
0.00	0.00	1156391.30	3235874.75	39.759598°N	104.660997°W	

ANNOTATIONS

MD	Inc	Azi	TVD	+N/-S	+E/-W	Vsect	Departure	Annotation
3359.00	8.91	11.40	3304.80	484.87	58.63	111.84	506.19	SURFACE CSG - 3359' MD, 3305' TVD
7475.00	14.07	16.74	7327.79	1341.59	163.02	310.25	1372.61	KOP - 7475' MD, 7328' TVD
8364.53	80.61	90.57	7883.57	1452.47	761.01	916.83	2012.43	~330' X-OVER PNT - 8364.53' MD, 7884' TVD, 1984' FNL, 330' FWL SEC 27
8446.00	87.73	93.99	7890.75	1449.36	842.04	997.02	2093.15	HZ LANDING PNT - 8446' MD, 7891' TVD
18247.00	89.79	91.77	7827.76	1191.89	10632.13	10698.72	11892.11	LAST SURVEY - 18247' MD, 7828' TVD
18317.00	89.79	91.77	7828.02	1189.73	10702.09	10768.02	11962.11	PTB - 18317' MD, 7828' TVD, 2155' FNL, 334' FEL SEC 26



# Civitas Resources

## Survey Report

<b>Company:</b> CRESTONE PEAK RESOURCES	<b>Local Co-ordinate Reference:</b> Well FLORIDA 3-65 27-26 2AH
<b>Project:</b> ADAMS COUNTY	<b>TVD Reference:</b> KBE 25' @ 5610.00usft
<b>Site:</b> SEC 28-T3S-R65W	<b>MD Reference:</b> KBE 25' @ 5610.00usft
<b>Well:</b> FLORIDA 3-65 27-26 2AH	<b>North Reference:</b> True
<b>Wellbore:</b> OWB	<b>Survey Calculation Method:</b> Minimum Curvature
<b>Design:</b> FINAL SURVEY	<b>Database:</b> EDM

<b>Project</b> ADAMS COUNTY		
<b>Map System:</b> US State Plane 1983	<b>System Datum:</b> Mean Sea Level	
<b>Geo Datum:</b> North American Datum 1983		
<b>Map Zone:</b> Colorado Northern Zone	Using geodetic scale factor	

<b>Site</b> SEC 28-T3S-R65W			
<b>Site Position:</b>	<b>Northing:</b> 1,154,535.24 usft	<b>Latitude:</b> 39.754491°N	
<b>From:</b> Lat/Long	<b>Easting:</b> 3,236,332.63 usft	<b>Longitude:</b> 104.659431°W	
<b>Position Uncertainty:</b> 0.00 usft	<b>Slot Radius:</b> 13.200 in	<b>Grid Convergence:</b> 0.54 °	

<b>Well</b> FLORIDA 3-65 27-26 2AH			
<b>Well Position</b>	<b>+N/-S</b> 0.00 usft	<b>Northing:</b> 1,156,391.29 usft	<b>Latitude:</b> 39.759598°N
	<b>+E/-W</b> 0.00 usft	<b>Easting:</b> 3,235,874.75 usft	<b>Longitude:</b> 104.660997°W
<b>Position Uncertainty</b>	0.00 usft	<b>Wellhead Elevation:</b> usft	<b>Ground Level:</b> 5,585.00 usft

<b>Wellbore</b> OWB					
Magnetics	Model Name	Sample Date	Declination (°)	Dip Angle (°)	Field Strength (nT)
	IGRF2020	6/7/2024	7.42	66.04	51,308.06713633

<b>Design</b> FINAL SURVEY				
<b>Audit Notes:</b>				
<b>Version:</b> 1.0	<b>Phase:</b> ACTUAL	<b>Tie On Depth:</b> 0.00		
Vertical Section:	Depth From (TVD) (usft)	+N/-S (usft)	+E/-W (usft)	Direction (°)
	0.00	0.00	0.00	83.66

<b>Survey Program</b>		<b>Date</b> 6/17/2024		
From (usft)	To (usft)	Survey (Wellbore)	Tool Name	Description
209.00	3,290.00	SURFACE SURVEY (OWB)	MWD OWSG	OWSG MWD - Standard
3,388.00	18,317.00	FINAL SURVEY (OWB)	MWD OWSG	OWSG MWD - Standard

Measured Depth (usft)	Inclination (°)	Azimuth (°)	Vertical Depth (usft)	+N/-S (usft)	+E/-W (usft)	Vertical Section (usft)	Dogleg Rate (°/100ft)	Build Rate (°/100ft)	Turn Rate (°/100ft)
0.00	0.00	0.00	0.00	0.00	0.00	0.00	0.00	0.00	0.00
209.00	1.99	281.40	208.96	0.72	-3.56	-3.46	0.95	0.95	0.00
300.00	2.12	282.50	299.90	1.39	-6.75	-6.55	0.15	0.14	1.21
390.00	1.90	279.06	389.84	1.99	-9.85	-9.57	0.28	-0.24	-3.82
480.00	1.86	283.03	479.80	2.55	-12.74	-12.38	0.15	-0.04	4.41
574.00	2.34	288.05	573.73	3.49	-16.06	-15.57	0.55	0.51	5.34
667.00	0.53	327.93	666.70	4.44	-18.09	-17.49	2.11	-1.95	42.88
762.00	0.31	41.54	761.70	5.01	-18.15	-17.49	0.56	-0.23	77.48
857.00	0.62	55.02	856.70	5.50	-17.56	-16.85	0.34	0.33	14.19
951.00	2.70	13.16	950.65	7.94	-16.64	-15.66	2.42	2.21	-44.53

# Civitas Resources

## Survey Report

<b>Company:</b>	CRESTONE PEAK RESOURCES	<b>Local Co-ordinate Reference:</b>	Well FLORIDA 3-65 27-26 2AH
<b>Project:</b>	ADAMS COUNTY	<b>TVD Reference:</b>	KBE 25' @ 5610.00usft
<b>Site:</b>	SEC 28-T3S-R65W	<b>MD Reference:</b>	KBE 25' @ 5610.00usft
<b>Well:</b>	FLORIDA 3-65 27-26 2AH	<b>North Reference:</b>	True
<b>Wellbore:</b>	OWB	<b>Survey Calculation Method:</b>	Minimum Curvature
<b>Design:</b>	FINAL SURVEY	<b>Database:</b>	EDM

Survey										
Measured Depth (usft)	Inclination (°)	Azimuth (°)	Vertical Depth (usft)	+N/-S (usft)	+E/-W (usft)	Vertical Section (usft)	Dogleg Rate (°/100ft)	Build Rate (°/100ft)	Turn Rate (°/100ft)	
1,045.00	3.54	11.26	1,044.51	12.95	-15.57	-14.04	0.90	0.89	-2.02	
1,141.00	3.93	12.98	1,140.31	19.06	-14.25	-12.06	0.42	0.41	1.79	
1,236.00	6.14	9.46	1,234.94	27.24	-12.68	-9.60	2.35	2.33	-3.71	
1,331.00	8.00	16.68	1,329.21	38.59	-9.95	-5.63	2.17	1.96	7.60	
1,426.00	8.93	15.18	1,423.18	52.04	-6.12	-0.34	1.01	0.98	-1.58	
1,520.00	10.87	8.49	1,515.77	67.85	-2.90	4.61	2.40	2.06	-7.12	
1,615.00	11.22	6.93	1,609.02	85.88	-0.47	9.03	0.48	0.37	-1.64	
1,710.00	13.21	7.68	1,701.86	105.82	2.10	13.78	2.10	2.09	0.79	
1,805.00	14.76	8.08	1,794.04	128.56	5.25	19.42	1.63	1.63	0.42	
1,900.00	15.33	8.88	1,885.78	152.95	8.89	25.73	0.64	0.60	0.84	
1,994.00	16.00	9.63	1,976.29	177.99	12.98	32.56	0.74	0.71	0.80	
2,089.00	16.00	9.15	2,067.61	203.83	17.25	39.66	0.14	0.00	-0.51	
2,184.00	15.64	8.66	2,159.01	229.42	21.26	46.48	0.40	-0.38	-0.52	
2,278.00	14.89	8.08	2,249.70	253.90	24.86	52.76	0.81	-0.80	-0.62	
2,372.00	14.14	8.27	2,340.70	277.22	28.21	58.67	0.80	-0.80	0.20	
2,466.00	12.99	7.06	2,432.07	299.07	31.16	64.02	1.26	-1.22	-1.29	
2,560.00	13.30	6.18	2,523.61	320.30	33.63	68.81	0.39	0.33	-0.94	
2,655.00	13.39	4.86	2,616.04	342.13	35.73	73.32	0.33	0.09	-1.39	
2,750.00	12.90	3.80	2,708.56	363.67	37.37	77.32	0.57	-0.52	-1.12	
2,845.00	13.04	10.07	2,801.14	384.80	39.95	82.22	1.49	0.15	6.60	
2,940.00	12.81	10.73	2,893.73	405.70	43.78	88.34	0.29	-0.24	0.69	
3,035.00	12.24	10.78	2,986.47	425.94	47.62	94.39	0.60	-0.60	0.05	
3,129.00	11.84	10.60	3,078.40	445.21	51.26	100.14	0.43	-0.43	-0.19	
3,223.00	10.30	9.85	3,170.65	462.97	54.47	105.29	1.65	-1.64	-0.80	
3,290.00	9.28	10.91	3,236.67	474.18	56.52	108.57	1.55	-1.52	1.58	
3,359.00	8.91	11.40	3,304.80	484.87	58.63	111.84	0.55	-0.54	0.71	
<b>SURFACE CSG - 3359' MD, 3305' TVD</b>										
3,388.00	8.75	11.62	3,333.46	489.24	59.52	113.21	0.55	-0.54	0.75	
3,483.00	9.99	9.41	3,427.19	504.44	62.32	117.67	1.36	1.31	-2.33	
3,578.00	9.10	7.06	3,520.88	520.03	64.59	121.65	1.02	-0.94	-2.47	
3,672.00	11.62	6.45	3,613.34	536.82	66.57	125.47	2.68	2.68	-0.65	
3,766.00	12.28	16.68	3,705.31	555.80	70.50	131.48	2.36	0.70	10.88	
3,861.00	11.18	17.04	3,798.32	574.28	76.10	139.09	1.16	-1.16	0.38	
3,955.00	12.51	7.06	3,890.33	593.10	80.02	145.06	2.59	1.41	-10.62	
4,050.00	11.18	6.01	3,983.30	612.47	82.25	149.42	1.42	-1.40	-1.11	
4,145.00	13.30	5.87	4,076.14	632.51	84.33	153.70	2.23	2.23	-0.15	
4,239.00	12.02	6.36	4,167.85	652.99	86.52	158.14	1.37	-1.36	0.52	
4,333.00	13.70	2.70	4,259.49	673.84	88.13	162.04	1.99	1.79	-3.89	
4,428.00	12.33	1.38	4,352.05	695.22	88.91	165.18	1.48	-1.44	-1.39	
4,522.00	10.21	0.94	4,444.23	713.58	89.29	167.58	2.26	-2.26	-0.47	
4,617.00	12.02	357.41	4,537.45	731.89	88.98	169.30	2.03	1.91	-3.72	
4,711.00	13.79	2.88	4,629.07	752.85	89.10	171.73	2.29	1.88	5.82	
4,806.00	11.22	2.39	4,721.81	773.40	90.05	174.95	2.71	-2.71	-0.52	

# Civitas Resources

## Survey Report

<b>Company:</b>	CRESTONE PEAK RESOURCES	<b>Local Co-ordinate Reference:</b>	Well FLORIDA 3-65 27-26 2AH
<b>Project:</b>	ADAMS COUNTY	<b>TVD Reference:</b>	KBE 25' @ 5610.00usft
<b>Site:</b>	SEC 28-T3S-R65W	<b>MD Reference:</b>	KBE 25' @ 5610.00usft
<b>Well:</b>	FLORIDA 3-65 27-26 2AH	<b>North Reference:</b>	True
<b>Wellbore:</b>	OWB	<b>Survey Calculation Method:</b>	Minimum Curvature
<b>Design:</b>	FINAL SURVEY	<b>Database:</b>	EDM

Survey										
Measured Depth (usft)	Inclination (°)	Azimuth (°)	Vertical Depth (usft)	+N/-S (usft)	+E/-W (usft)	Vertical Section (usft)	Dogleg Rate (°/100ft)	Build Rate (°/100ft)	Turn Rate (°/100ft)	
4,901.00	11.58	10.07	4,814.94	792.02	92.10	179.05	1.64	0.38	8.08	
4,996.00	9.90	8.66	4,908.28	809.49	95.00	183.86	1.79	-1.77	-1.48	
5,090.00	12.73	4.90	5,000.44	827.80	97.10	187.97	3.11	3.01	-4.00	
5,186.00	11.05	2.61	5,094.38	847.53	98.43	191.46	1.82	-1.75	-2.39	
5,280.00	12.24	3.76	5,186.44	866.47	99.49	194.61	1.29	1.27	1.22	
5,375.00	13.79	7.11	5,279.00	887.76	101.55	199.02	1.81	1.63	3.53	
5,469.00	12.15	5.56	5,370.60	908.72	103.90	203.66	1.78	-1.74	-1.65	
5,564.00	13.88	9.81	5,463.16	929.90	106.81	208.90	2.08	1.82	4.47	
5,659.00	13.39	10.73	5,555.48	951.94	110.80	215.30	0.56	-0.52	0.97	
5,754.00	12.02	8.66	5,648.15	972.53	114.33	221.09	1.52	-1.44	-2.18	
5,848.00	10.83	4.37	5,740.29	991.01	116.48	225.26	1.55	-1.27	-4.56	
5,943.00	14.05	359.31	5,833.05	1,011.44	117.02	228.06	3.58	3.39	-5.33	
6,038.00	15.86	4.73	5,924.83	1,035.91	117.95	231.69	2.41	1.91	5.71	
6,132.00	14.41	4.42	6,015.57	1,060.38	119.92	236.34	1.54	-1.54	-0.33	
6,227.00	14.76	12.76	6,107.52	1,083.97	123.50	242.51	2.24	0.37	8.78	
6,322.00	13.52	11.53	6,199.64	1,106.65	128.39	249.88	1.34	-1.31	-1.29	
6,416.00	11.62	7.81	6,291.38	1,126.80	131.88	255.56	2.20	-2.02	-3.96	
6,511.00	12.24	9.41	6,384.33	1,146.21	134.82	260.64	0.74	0.65	1.68	
6,606.00	10.38	7.37	6,477.48	1,164.64	137.57	265.40	2.00	-1.96	-2.15	
6,701.00	11.67	5.43	6,570.73	1,182.69	139.57	269.39	1.41	1.36	-2.04	
6,795.00	12.55	7.55	6,662.63	1,202.28	141.82	273.78	1.05	0.94	2.26	
6,890.00	10.03	6.80	6,755.79	1,220.73	144.15	278.14	2.66	-2.65	-0.79	
6,985.00	11.45	7.94	6,849.12	1,238.28	146.43	282.35	1.51	1.49	1.20	
7,080.00	13.70	8.57	6,941.84	1,258.75	149.41	287.57	2.37	2.37	0.66	
7,175.00	11.53	7.90	7,034.54	1,279.28	152.39	292.81	2.29	-2.28	-0.71	
7,270.00	11.80	10.87	7,127.58	1,298.23	155.53	298.02	0.69	0.28	3.13	
7,365.00	12.55	7.37	7,220.44	1,318.00	158.69	303.34	1.11	0.79	-3.68	
7,460.00	12.46	12.10	7,313.19	1,338.26	162.16	309.03	1.08	-0.09	4.98	
7,475.00	14.07	16.74	7,327.79	1,341.59	163.02	310.25	12.85	10.72	30.97	
<b>KOP - 7475' MD, 7328' TVD</b>										
7,555.00	23.46	30.21	7,403.49	1,364.72	173.87	323.59	12.85	11.74	16.83	
7,650.00	33.72	45.55	7,486.90	1,399.67	202.32	355.73	13.20	10.80	16.15	
7,744.00	38.98	70.67	7,563.01	1,427.90	249.14	405.38	16.69	5.60	26.72	
7,838.00	41.45	89.26	7,635.05	1,438.13	308.37	465.38	13.00	2.63	19.78	
7,934.00	50.20	89.61	7,701.88	1,438.79	377.15	533.81	9.12	9.11	0.36	
8,029.00	53.20	86.00	7,760.76	1,441.70	451.62	608.14	4.34	3.16	-3.80	
8,123.00	65.00	86.40	7,808.95	1,447.01	531.96	688.58	12.56	12.55	0.43	
8,218.00	71.32	89.22	7,844.28	1,450.33	620.02	776.47	7.20	6.65	2.97	
8,313.00	74.28	88.56	7,872.37	1,452.10	710.74	866.83	3.19	3.12	-0.69	
8,364.53	80.61	90.57	7,883.57	1,452.47	761.01	916.83	12.85	12.27	3.90	
<b>~330' X-OVER PNT - 8364.53' MD, 7884' TVD, 1984' FNL, 330' FWL SEC 27</b>										
8,408.00	85.95	92.21	7,888.66	1,451.42	804.15	959.59	12.85	12.30	3.77	
8,446.00	87.73	93.99	7,890.75	1,449.36	842.04	997.02	6.63	4.69	4.70	
<b>HZ LANDING PNT - 8446' MD, 7891' TVD</b>										

# Civitas Resources

## Survey Report

<b>Company:</b>	CRESTONE PEAK RESOURCES	<b>Local Co-ordinate Reference:</b>	Well FLORIDA 3-65 27-26 2AH
<b>Project:</b>	ADAMS COUNTY	<b>TVD Reference:</b>	KBE 25' @ 5610.00usft
<b>Site:</b>	SEC 28-T3S-R65W	<b>MD Reference:</b>	KBE 25' @ 5610.00usft
<b>Well:</b>	FLORIDA 3-65 27-26 2AH	<b>North Reference:</b>	True
<b>Wellbore:</b>	OWB	<b>Survey Calculation Method:</b>	Minimum Curvature
<b>Design:</b>	FINAL SURVEY	<b>Database:</b>	EDM

Survey										
Measured Depth (usft)	Inclination (°)	Azimuth (°)	Vertical Depth (usft)	+N/-S (usft)	+E/-W (usft)	Vertical Section (usft)	Dogleg Rate (°/100ft)	Build Rate (°/100ft)	Turn Rate (°/100ft)	
8,504.00	90.46	96.71	7,891.66	1,443.95	899.77	1,053.80	6.63	4.70	4.68	
8,598.00	88.16	94.51	7,892.80	1,434.77	993.30	1,145.74	3.39	-2.45	-2.34	
8,693.00	86.96	94.86	7,896.84	1,427.01	1,087.89	1,238.90	1.32	-1.26	0.37	
8,788.00	88.33	93.45	7,900.74	1,420.14	1,182.56	1,332.22	2.07	1.44	-1.48	
8,882.00	88.95	92.43	7,902.97	1,415.32	1,276.41	1,424.97	1.27	0.66	-1.09	
8,977.00	88.25	92.04	7,905.30	1,411.61	1,371.30	1,518.87	0.84	-0.74	-0.41	
9,072.00	91.03	91.47	7,905.89	1,408.70	1,466.25	1,612.91	2.99	2.93	-0.60	
9,166.00	89.75	89.61	7,905.25	1,407.82	1,560.24	1,706.23	2.40	-1.36	-1.98	
9,261.00	93.11	90.10	7,902.88	1,408.06	1,655.19	1,800.63	3.57	3.54	0.52	
9,356.00	91.47	90.19	7,899.09	1,407.82	1,750.11	1,894.94	1.73	-1.73	0.09	
9,450.00	91.25	90.06	7,896.85	1,407.61	1,844.09	1,988.32	0.27	-0.23	-0.14	
9,544.00	91.16	91.02	7,894.88	1,406.73	1,938.06	2,081.62	1.03	-0.10	1.02	
9,639.00	89.97	88.91	7,893.94	1,406.79	2,033.05	2,176.03	2.55	-1.25	-2.22	
9,734.00	90.46	95.39	7,893.58	1,403.22	2,127.93	2,269.94	6.84	0.52	6.82	
9,828.00	91.03	97.90	7,892.36	1,392.35	2,221.28	2,361.52	2.74	0.61	2.67	
9,923.00	90.94	99.79	7,890.73	1,377.74	2,315.13	2,453.18	1.99	-0.09	1.99	
10,017.00	90.72	97.11	7,889.37	1,363.93	2,408.10	2,544.05	2.86	-0.23	-2.85	
10,112.00	90.06	90.58	7,888.72	1,357.57	2,502.83	2,637.50	6.91	-0.69	-6.87	
10,207.00	90.15	93.05	7,888.55	1,354.56	2,597.77	2,731.53	2.60	0.09	2.60	
10,302.00	91.87	92.21	7,886.87	1,350.20	2,692.65	2,825.35	2.01	1.81	-0.88	
10,397.00	91.16	90.10	7,884.36	1,348.29	2,787.60	2,919.50	2.34	-0.75	-2.22	
10,491.00	90.94	90.32	7,882.64	1,347.94	2,881.58	3,012.87	0.33	-0.23	0.23	
10,586.00	90.99	90.14	7,881.04	1,347.56	2,976.56	3,107.23	0.20	0.05	-0.19	
10,681.00	91.87	93.76	7,878.66	1,344.33	3,071.46	3,201.19	3.92	0.93	3.81	
10,776.00	88.78	89.31	7,878.13	1,341.79	3,166.39	3,295.26	5.70	-3.25	-4.68	
10,870.00	87.94	89.48	7,880.82	1,342.78	3,260.35	3,388.75	0.91	-0.89	0.18	
10,965.00	86.79	89.83	7,885.18	1,343.35	3,355.24	3,483.12	1.27	-1.21	0.37	
11,059.00	88.25	88.95	7,889.25	1,344.35	3,449.15	3,576.56	1.81	1.55	-0.94	
11,154.00	88.16	88.82	7,892.23	1,346.20	3,544.08	3,671.12	0.17	-0.09	-0.14	
11,248.00	90.50	88.78	7,893.33	1,348.17	3,638.05	3,764.73	2.49	2.49	-0.04	
11,342.00	90.72	89.97	7,892.32	1,349.19	3,732.04	3,858.26	1.29	0.23	1.27	
11,437.00	91.25	88.56	7,890.69	1,350.41	3,827.01	3,952.78	1.59	0.56	-1.48	
11,532.00	91.91	86.97	7,888.07	1,354.11	3,921.90	4,047.50	1.81	0.69	-1.67	
11,627.00	89.88	89.75	7,886.59	1,356.83	4,016.83	4,142.15	3.62	-2.14	2.93	
11,722.00	89.22	89.57	7,887.33	1,357.40	4,111.83	4,236.63	0.72	-0.69	-0.19	
11,817.00	90.94	89.88	7,887.20	1,357.85	4,206.82	4,331.09	1.84	1.81	0.33	
11,912.00	90.50	90.41	7,886.01	1,357.61	4,301.82	4,425.48	0.73	-0.46	0.56	
12,006.00	91.43	89.48	7,884.42	1,357.70	4,395.80	4,518.90	1.40	0.99	-0.99	
12,195.00	90.63	90.36	7,881.03	1,357.96	4,584.77	4,706.73	0.63	-0.42	0.47	
12,289.00	90.54	91.07	7,880.07	1,356.79	4,678.75	4,800.02	0.76	-0.10	0.76	
12,384.00	92.71	92.43	7,877.37	1,353.89	4,773.66	4,894.02	2.70	2.28	1.43	
12,479.00	92.09	92.04	7,873.40	1,350.19	4,868.51	4,987.88	0.77	-0.65	-0.41	
12,573.00	92.09	92.04	7,869.97	1,346.85	4,962.39	5,080.81	0.00	0.00	0.00	

# Civitas Resources

## Survey Report

<b>Company:</b>	CRESTONE PEAK RESOURCES	<b>Local Co-ordinate Reference:</b>	Well FLORIDA 3-65 27-26 2AH
<b>Project:</b>	ADAMS COUNTY	<b>TVD Reference:</b>	KBE 25' @ 5610.00usft
<b>Site:</b>	SEC 28-T3S-R65W	<b>MD Reference:</b>	KBE 25' @ 5610.00usft
<b>Well:</b>	FLORIDA 3-65 27-26 2AH	<b>North Reference:</b>	True
<b>Wellbore:</b>	OWB	<b>Survey Calculation Method:</b>	Minimum Curvature
<b>Design:</b>	FINAL SURVEY	<b>Database:</b>	EDM

Survey										
Measured Depth (usft)	Inclination (°)	Azimuth (°)	Vertical Depth (usft)	+N/-S (usft)	+E/-W (usft)	Vertical Section (usft)	Dogleg Rate (°/100ft)	Build Rate (°/100ft)	Turn Rate (°/100ft)	
12,668.00	91.91	93.27	7,866.65	1,342.45	5,057.22	5,174.58	1.31	-0.19	1.29	
12,763.00	91.30	92.57	7,863.99	1,337.61	5,152.06	5,268.31	0.98	-0.64	-0.74	
12,858.00	90.32	91.42	7,862.65	1,334.31	5,246.99	5,362.29	1.59	-1.03	-1.21	
12,952.00	91.16	92.57	7,861.43	1,331.03	5,340.93	5,455.29	1.51	0.89	1.22	
13,047.00	91.47	92.52	7,859.25	1,326.82	5,435.81	5,549.12	0.33	0.33	-0.05	
13,142.00	92.00	92.30	7,856.38	1,322.82	5,530.68	5,642.97	0.60	0.56	-0.23	
13,237.00	90.32	92.52	7,854.45	1,318.83	5,625.57	5,736.84	1.78	-1.77	0.23	
13,331.00	89.26	93.40	7,854.80	1,313.98	5,719.44	5,829.60	1.47	-1.13	0.94	
13,425.00	91.78	92.61	7,853.95	1,309.05	5,813.30	5,922.34	2.81	2.68	-0.84	
13,520.00	92.44	91.86	7,850.45	1,305.35	5,908.16	6,016.22	1.05	0.69	-0.79	
13,616.00	90.77	93.76	7,847.76	1,300.64	6,004.00	6,110.95	2.63	-1.74	1.98	
13,710.00	90.06	93.10	7,847.08	1,295.02	6,097.83	6,203.58	1.03	-0.76	-0.70	
13,806.00	90.10	93.54	7,846.94	1,289.46	6,193.67	6,298.22	0.46	0.04	0.46	
13,901.00	91.43	96.18	7,845.68	1,281.41	6,288.31	6,391.39	3.11	1.40	2.78	
13,996.00	87.54	93.80	7,846.53	1,273.15	6,382.92	6,484.51	4.80	-4.09	-2.51	
14,090.00	88.51	91.95	7,849.77	1,268.44	6,476.74	6,577.23	2.22	1.03	-1.97	
14,184.00	90.01	91.20	7,850.98	1,265.86	6,570.69	6,670.33	1.78	1.60	-0.80	
14,279.00	90.68	91.29	7,850.41	1,263.79	6,665.67	6,764.49	0.71	0.71	0.09	
14,467.00	91.16	90.23	7,847.39	1,261.30	6,853.63	6,951.02	0.62	0.26	-0.56	
14,561.00	91.16	90.32	7,845.49	1,260.85	6,947.61	7,044.38	0.10	0.00	0.10	
14,655.00	91.47	90.10	7,843.33	1,260.50	7,041.58	7,137.74	0.40	0.33	-0.23	
14,749.00	91.30	90.01	7,841.06	1,260.41	7,135.55	7,231.12	0.20	-0.18	-0.10	
14,845.00	91.25	89.39	7,838.92	1,260.91	7,231.53	7,326.57	0.65	-0.05	-0.65	
14,939.00	90.81	91.64	7,837.23	1,260.07	7,325.50	7,419.87	2.44	-0.47	2.39	
15,034.00	90.63	90.54	7,836.04	1,258.26	7,420.48	7,514.07	1.17	-0.19	-1.16	
15,128.00	90.50	90.36	7,835.11	1,257.52	7,514.47	7,607.40	0.24	-0.14	-0.19	
15,223.00	90.54	90.28	7,834.25	1,256.99	7,609.46	7,701.76	0.09	0.04	-0.08	
15,318.00	90.41	89.39	7,833.46	1,257.27	7,704.46	7,796.20	0.95	-0.14	-0.94	
15,412.00	90.06	91.42	7,833.08	1,256.60	7,798.45	7,889.54	2.19	-0.37	2.16	
15,507.00	90.28	91.91	7,832.80	1,253.84	7,893.41	7,983.61	0.57	0.23	0.52	
15,602.00	90.72	92.66	7,831.97	1,250.06	7,988.33	8,077.54	0.92	0.46	0.79	
15,697.00	90.19	92.70	7,831.21	1,245.61	8,083.22	8,171.36	0.56	-0.56	0.04	
15,791.00	89.79	94.07	7,831.23	1,240.06	8,177.05	8,264.00	1.52	-0.43	1.46	
15,885.00	89.57	91.91	7,831.75	1,235.16	8,270.92	8,356.75	2.31	-0.23	-2.30	
15,979.00	88.95	91.51	7,832.97	1,232.36	8,364.87	8,449.82	0.78	-0.66	-0.43	
16,075.00	90.37	90.45	7,833.54	1,230.71	8,460.85	8,545.03	1.85	1.48	-1.10	
16,169.00	89.57	89.13	7,833.59	1,231.06	8,554.85	8,638.49	1.64	-0.85	-1.40	
16,263.00	91.21	90.89	7,832.95	1,231.04	8,648.84	8,731.90	2.56	1.74	1.87	
16,358.00	91.30	90.98	7,830.87	1,229.49	8,743.80	8,826.11	0.13	0.09	0.09	
16,452.00	91.30	91.07	7,828.73	1,227.81	8,837.76	8,919.31	0.10	0.00	0.10	
16,546.00	91.07	89.13	7,826.79	1,227.65	8,931.74	9,012.69	2.08	-0.24	-2.06	
16,640.00	89.53	91.99	7,826.30	1,226.73	9,025.72	9,106.00	3.46	-1.64	3.04	
16,735.00	89.66	91.77	7,826.97	1,223.61	9,120.67	9,200.02	0.27	0.14	-0.23	
16,829.00	89.79	91.86	7,827.42	1,220.63	9,214.62	9,293.07	0.17	0.14	0.10	

# Civitas Resources

## Survey Report

<b>Company:</b> CRESTONE PEAK RESOURCES	<b>Local Co-ordinate Reference:</b> Well FLORIDA 3-65 27-26 2AH
<b>Project:</b> ADAMS COUNTY	<b>TVD Reference:</b> KBE 25' @ 5610.00usft
<b>Site:</b> SEC 28-T3S-R65W	<b>MD Reference:</b> KBE 25' @ 5610.00usft
<b>Well:</b> FLORIDA 3-65 27-26 2AH	<b>North Reference:</b> True
<b>Wellbore:</b> OWB	<b>Survey Calculation Method:</b> Minimum Curvature
<b>Design:</b> FINAL SURVEY	<b>Database:</b> EDM

Survey										
Measured Depth (usft)	Inclination (°)	Azimuth (°)	Vertical Depth (usft)	+N/-S (usft)	+E/-W (usft)	Vertical Section (usft)	Dogleg Rate (°/100ft)	Build Rate (°/100ft)	Turn Rate (°/100ft)	
16,924.00	89.97	90.94	7,827.62	1,218.31	9,309.59	9,387.20	0.99	0.19	-0.97	
17,019.00	89.57	89.53	7,828.00	1,217.92	9,404.58	9,481.57	1.54	-0.42	-1.48	
17,113.00	88.60	91.47	7,829.50	1,217.10	9,498.56	9,574.88	2.31	-1.03	2.06	
17,208.00	88.78	93.85	7,831.67	1,212.70	9,593.43	9,668.68	2.51	0.19	2.51	
17,303.00	89.53	90.76	7,833.07	1,208.88	9,688.33	9,762.58	3.35	0.79	-3.25	
17,397.00	90.90	90.76	7,832.72	1,207.63	9,782.32	9,855.85	1.46	1.46	0.00	
17,492.00	91.03	90.76	7,831.12	1,206.37	9,877.30	9,950.11	0.14	0.14	0.00	
17,586.00	89.66	90.67	7,830.56	1,205.20	9,971.28	10,043.40	1.46	-1.46	-0.10	
17,681.00	90.63	90.98	7,830.32	1,203.83	10,066.27	10,137.65	1.07	1.02	0.33	
17,775.00	90.28	91.38	7,829.57	1,201.89	10,160.25	10,230.84	0.57	-0.37	0.43	
17,870.00	89.48	91.11	7,829.77	1,199.83	10,255.23	10,325.01	0.89	-0.84	-0.28	
17,965.00	90.85	90.72	7,829.49	1,198.31	10,350.21	10,419.24	1.50	1.44	-0.41	
18,059.00	90.59	91.42	7,828.31	1,196.56	10,444.19	10,512.45	0.79	-0.28	0.74	
18,152.00	90.15	91.25	7,827.71	1,194.39	10,537.16	10,604.61	0.51	-0.47	-0.18	
18,247.00	89.79	91.77	7,827.76	1,191.89	10,632.13	10,698.72	0.67	-0.38	0.55	
<b>LAST SURVEY - 18247' MD, 7828' TVD</b>										
18,317.00	89.79	91.77	7,828.02	1,189.73	10,702.09	10,768.02	0.00	0.00	0.00	
<b>PTB - 18317' MD, 7828' TVD, 2155' FNL, 334' FEL SEC 26</b>										

Design Targets										
Target Name	Dip Angle (°)	Dip Dir. (°)	TVD (usft)	+N/-S (usft)	+E/-W (usft)	Northing (usft)	Easting (usft)	Latitude	Longitude	
PBHL-FLORIDA 3-65 27 - hit/miss target - Shape - Point	0.00	0.00	7,800.00	1,164.34	10,705.99	1,157,656.86	3,246,569.17	39.762788°N	104.622915°W	
- actual wellpath misses target center by 38.01usft at 18317.00usft MD (7828.02 TVD, 1189.73 N, 10702.09 E)										
LP-FLORIDA 3-65 27-26 - actual wellpath misses target center by 23.11usft at 8366.85usft MD (7883.94 TVD, 1452.44 N, 763.30 E) - Point	0.00	0.00	7,900.00	1,435.98	761.01	1,157,834.40	3,236,622.13	39.763540°N	104.658290°W	

Design Annotations					
Measured Depth (usft)	Vertical Depth (usft)	Local Coordinates		Comment	
		+N/-S (usft)	+E/-W (usft)		
3,359.00	3,304.80	484.87	58.63	SURFACE CSG - 3359' MD, 3305' TVD	
7,475.00	7,327.79	1,341.59	163.02	KOP - 7475' MD, 7328' TVD	
8,364.53	7,883.57	1,452.47	761.01	~330' X-OVER PNT - 8364.53' MD, 7884' TVD, 1984' FNL, 330' FWL SEC 27	
8,446.00	7,890.75	1,449.36	842.04	HZ LANDING PNT - 8446' MD, 7891' TVD	
18,247.00	7,827.76	1,191.89	10,632.13	LAST SURVEY - 18247' MD, 7828' TVD	
18,317.00	7,828.02	1,189.73	10,702.09	PTB - 18317' MD, 7828' TVD, 2155' FNL, 334' FEL SEC 26	

Checked By: \_\_\_\_\_ Approved By: \_\_\_\_\_ Date: \_\_\_\_\_