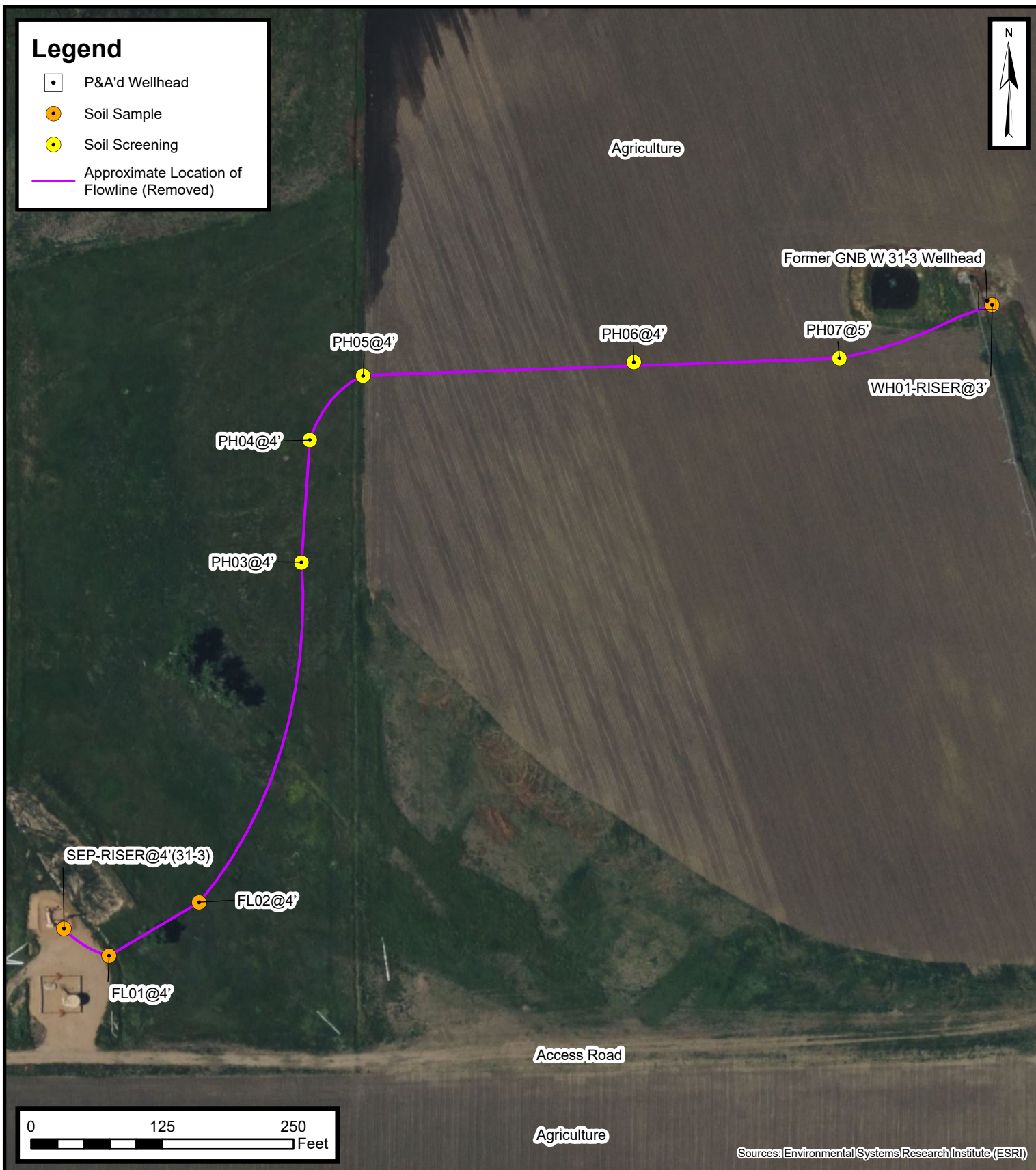


## Legend

- P&A'd Wellhead
- Soil Sample
- Soil Screening
- Approximate Location of Flowline (Removed)



## Flowline Excavation Site Map

GNB W 31-3 Flowline  
Kerr-McGee Oil & Gas Onshore, LP  
NENW SEC 31-T2N-R66W  
Weld County, CO

Project Number: 09A1417646

FIGURE  
**2**