



Company		CHEVRON	
Well		WELLS RANCH AA21-16	
Field		WATTENBERG	
County		WELD	
State		CO	
Location:		API # : 05-123-26808	
Permanent Datum		SEC 21	TWP 6
Log Measured From		KB	RGE 63
Drilling Measured From		KB	Elevation 4,730'
Other Services		Elevation K.B. 4,743' D.F. 4,742' G.L. 4,730'	
Date 5-22-24			
Run Number ONE			
Depth Driller 6,912'			
Depth Logger 740'			
Bottom Logged Interval 740'			
Top Log Interval SURFACE			
Open Hole Size 8 5/8"			
Type Fluid WATER			
Density / Viscosity N/A			
Max. Recorded Temp. N/A			
Estimated Cement Top N/A			
Time Well Ready 7:30			
Time Logger on Bottom 8:05			
Equipment Number 425			
Location RIG 12			
Recorded By ZION DIONNE			
Witnessed By DESI NAVA			
Borehole Record		Tubing Record	
Run Number	Bit	From	To
		Size	Weight
		From	To
Casing Record	Size	Wgt/Ft	Top
Surface String	8 5/8"	24#	SURFACE
Prot. String			
Production String	4.5"	11.6#	SURFACE
Liner			Bottom

<<< Fold Here >>>

All interpretations are opinions based on inferences from electrical or other measurements and we cannot and do not guarantee the accuracy or correctness of any interpretation, and we shall not, except in the case of gross or willful negligence on our part, be liable or responsible for any loss, costs, damages, or expenses incurred or sustained by anyone resulting from any interpretation made by any of our officers, agents or employees. These interpretations are also subject to our general terms and conditions set out in our current Price Schedule.

### Comments

LOG RAN PER CUSTOMER REQUEST  
DEPTH REFERENCED TO KB  
ZERO PRESSURE APPLIED

MAIN PASS 740' TO SURFACE

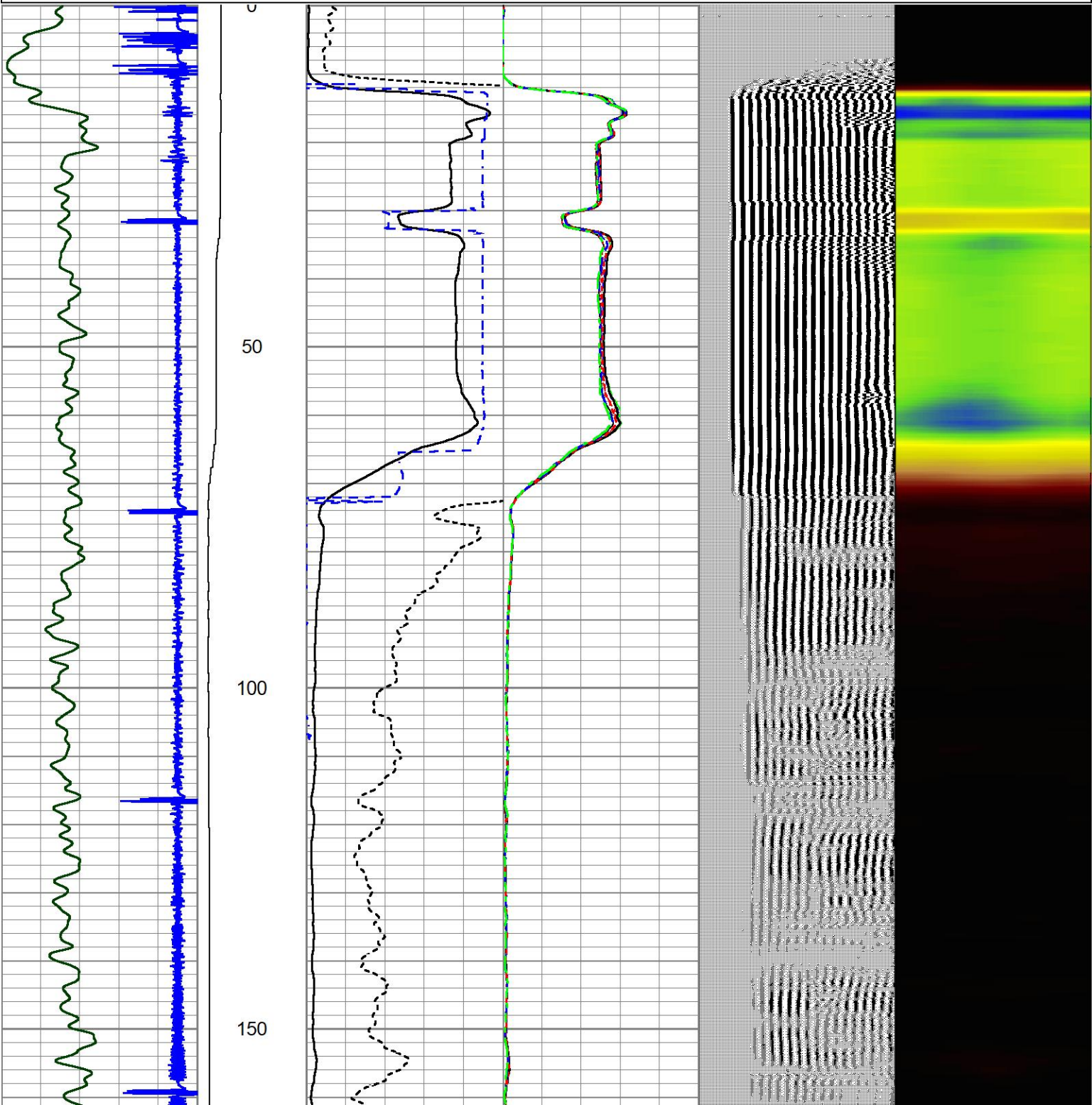
THANK YOU FOR USING A-PLUS P&A LLC

# MAIN PASS

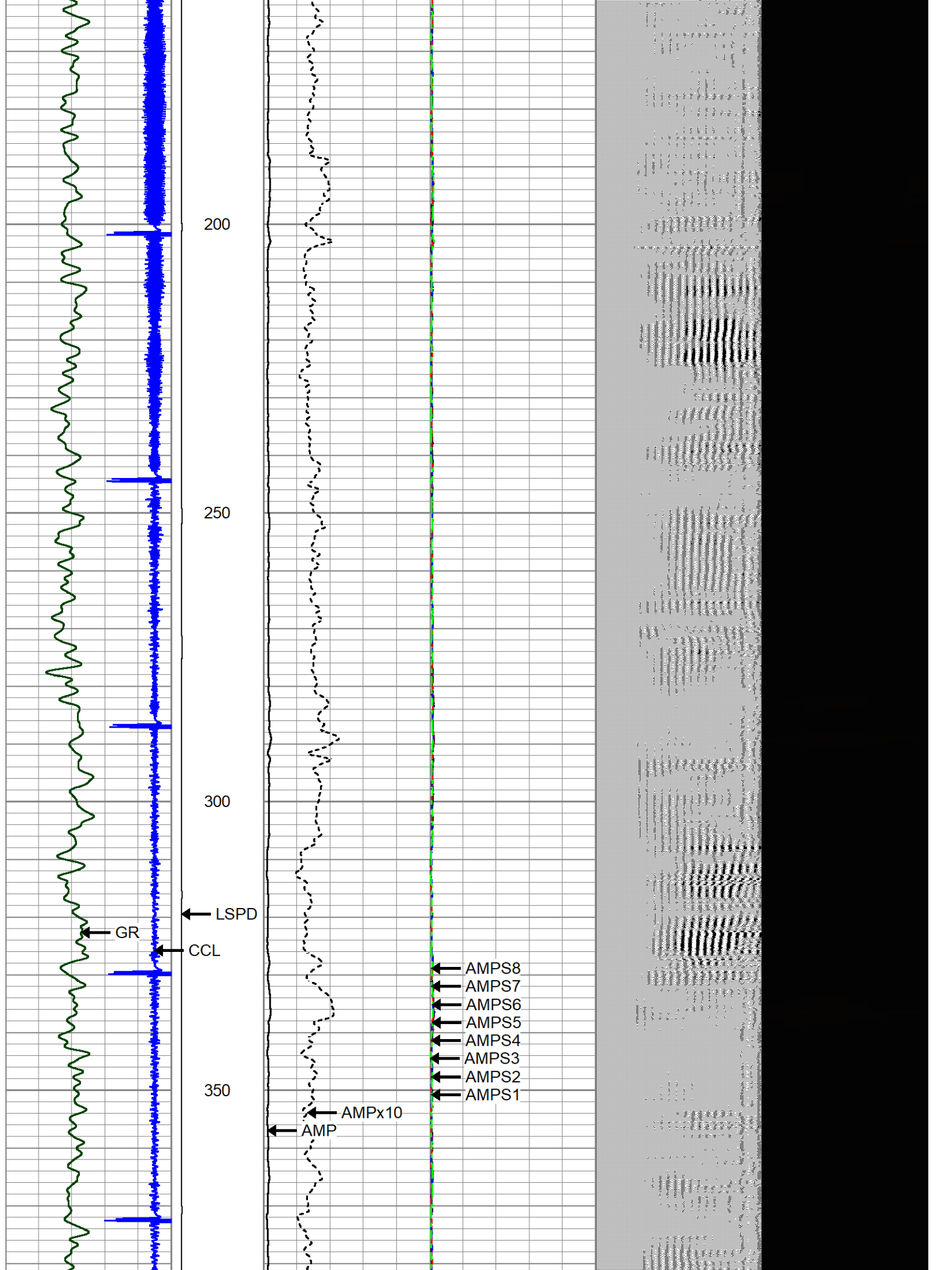


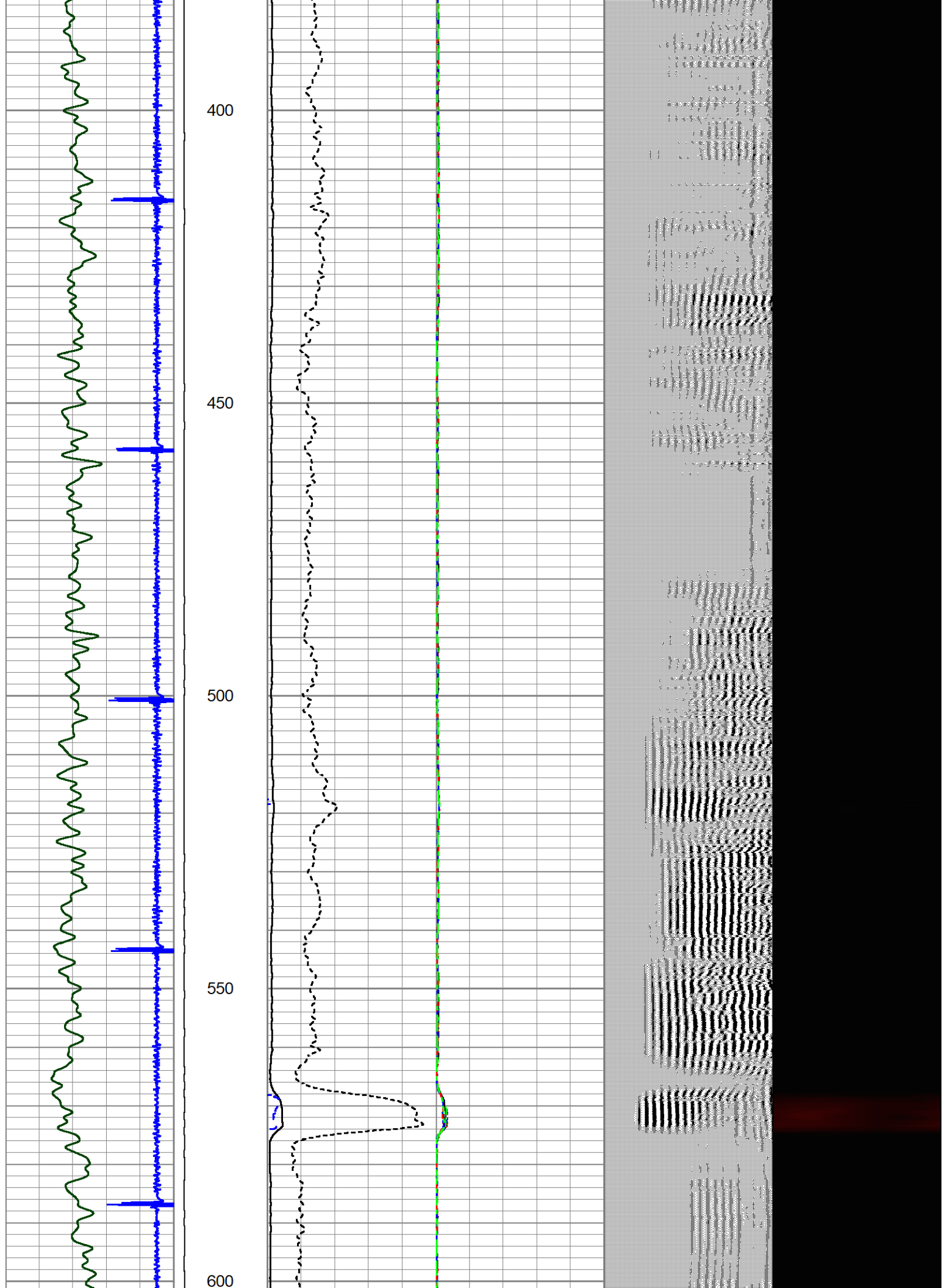
Database File	5-22-24.db
Dataset Pathname	pass8
Presentation Format	zionrbl
Dataset Creation	Wed May 22 08:12:25 2024
Charted by	Depth in Feet scaled 1:240

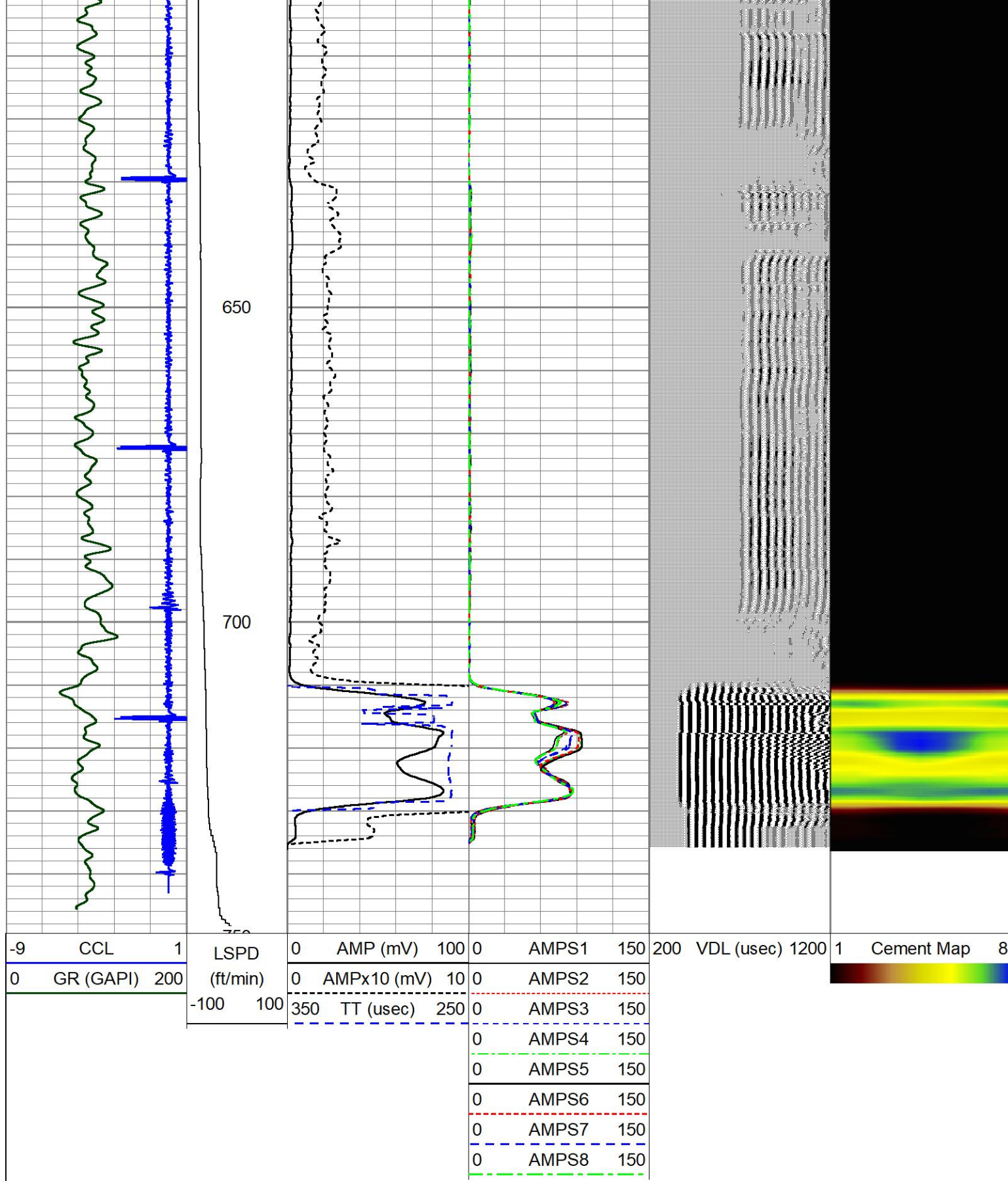
-9	CCL	1	LSPD	0	AMP (mV)	100	0	AMPS1	150	200	VDL (usec)	1200	1	Cement Map	8
0	GR (GAPI)	200	(ft/min)	0	AMPx10 (mV)	10	0	AMPS2	150						
			-100	100	350	TT (usec)	250	0	AMPS3	150					
								0	AMPS4	150					
								0	AMPS5	150					
								0	AMPS6	150					
								0	AMPS7	150					
								0	AMPS8	150					







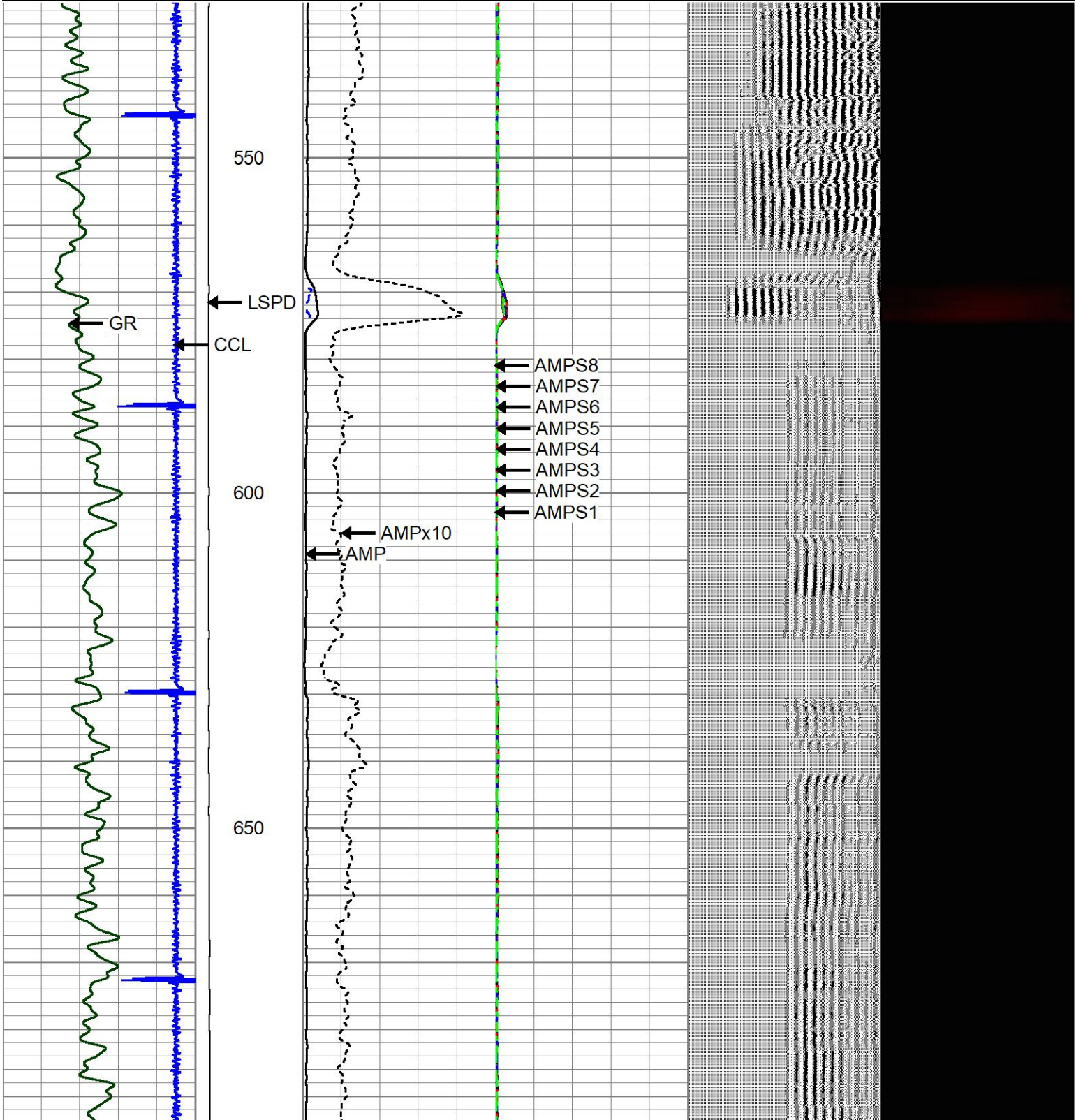


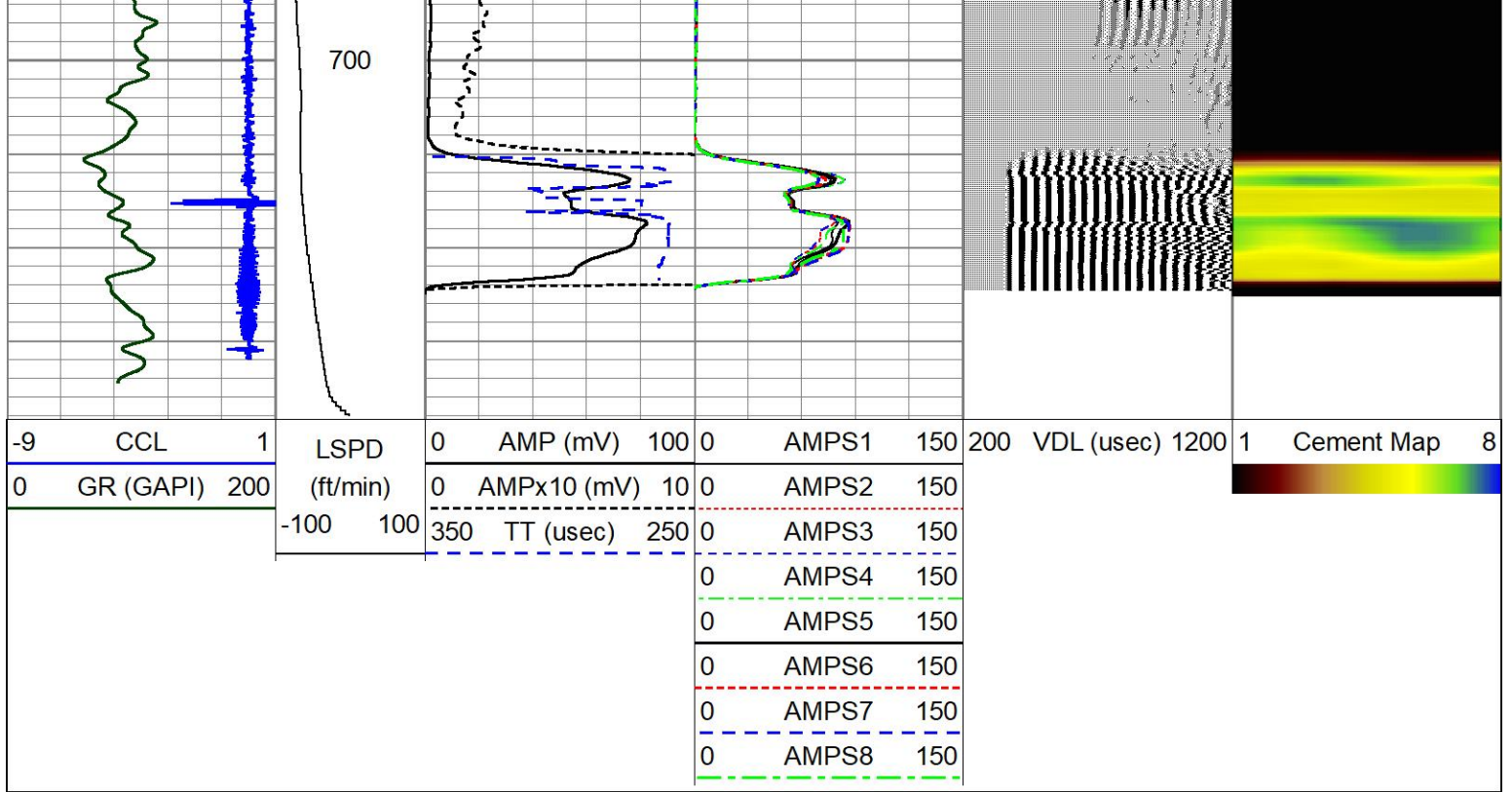


# REPEAT PASS



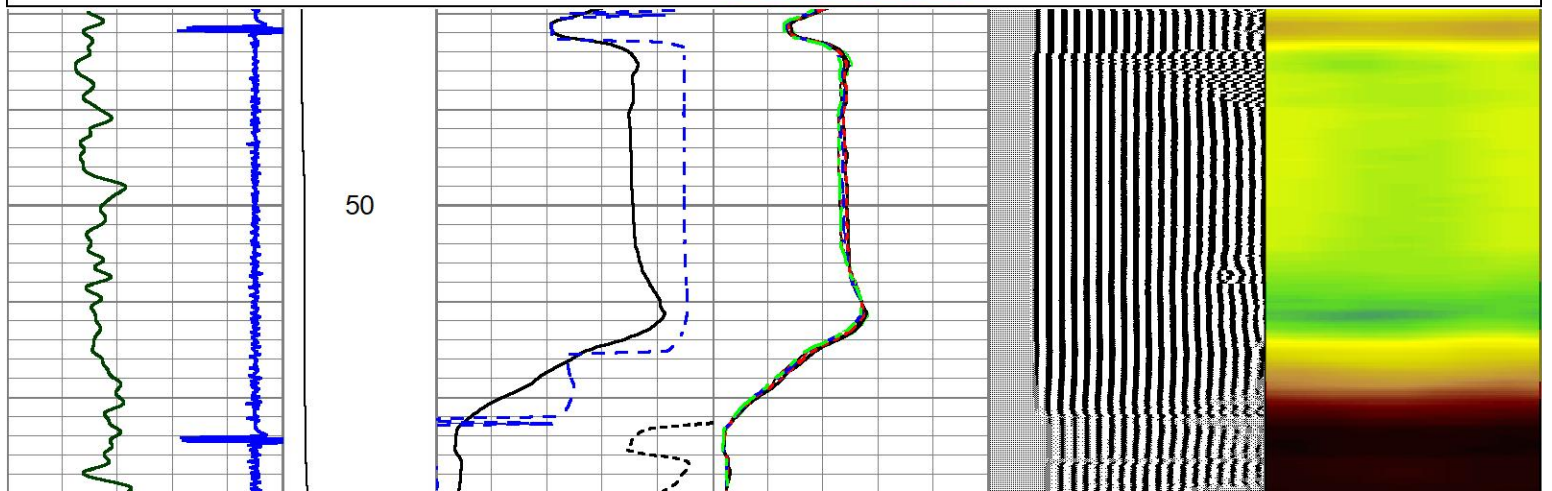
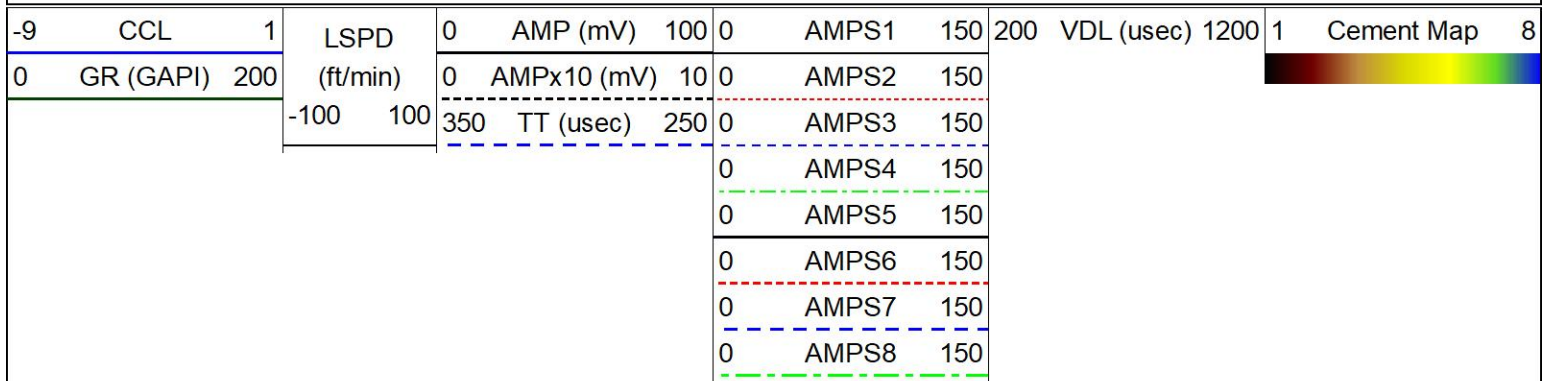
-9	CCL	1	LSPD	0	AMP (mV)	100	0	AMPS1	150	200	VDL (usec)	1200	1	Cement Map	8
0	GR (GAPI)	200	(ft/min)	0	AMPx10 (mV)	10	0	AMPS2	150						
			-100 100	350	TT (usec)	250	0	AMPS3	150						
							0	AMPS4	150						
							0	AMPS5	150						
							0	AMPS6	150						
							0	AMPS7	150						
							0	AMPS8	150						



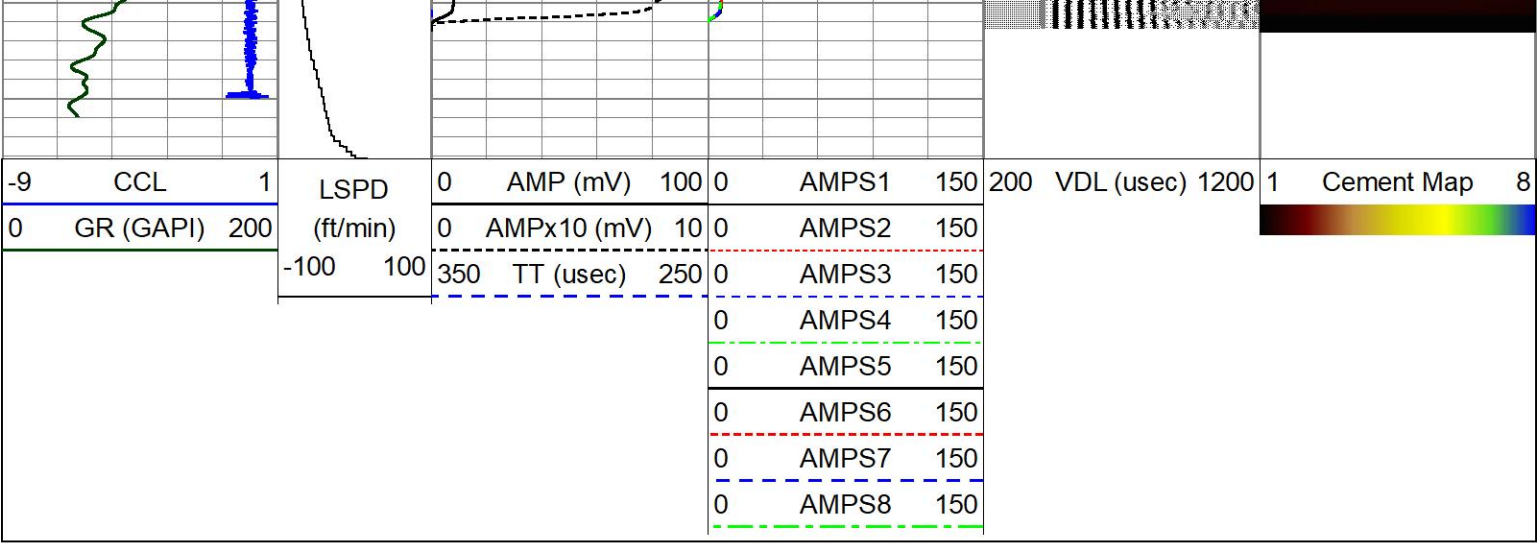


# CAL PASS

Database File 5-22-24.db  
Dataset Pathname pass3  
Presentation Format zionrbl  
Dataset Creation Wed May 22 07:57:42 2024  
Charted by Depth in Feet scaled 1:240







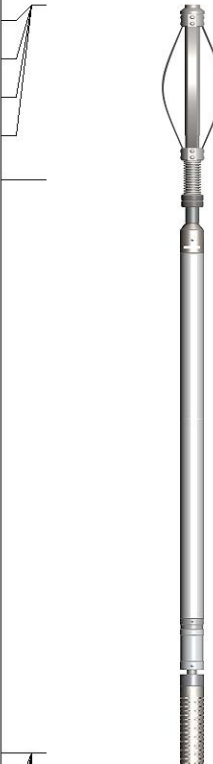
Calibration Report						
Database File	5-22-24.db					
Dataset Pathname	pass8					
Dataset Creation	Wed May 22 08:12:25 2024					
Gamma Ray Calibration Report						
Serial Number:	GCL004_base					
Tool Model:	GCL004					
Performed:	(Not Performed)					
Calibrator Value:	1.0	GAPI				
Background Reading:	0.0	cps				
Calibrator Reading:	1.0	cps				
Sensitivity:	1.0000	GAPI/cps				
Segmented Cement Bond Log Calibration Report						
Serial Number:	FW2001-30					
Tool Model:	HTRCB-275					
Calibration Casing Diameter:	4.500	in				
Calibration Depth:	74.917	ft				
Master Calibration, performed Wed May 22 07:57:10 2024:						
	Raw (v)		Calibrated (mv)		Results	
	Zero	Cal	Zero	Cal	Gain	Offset
3'	0.017	1.022	1.000	81.196	79.785	-0.346
CAL	0.016	1.222				
5'	0.017	0.955	1.000	81.196	85.507	-0.422
SUM						
S1	0.017	1.026	0.000	81.196	80.442	-1.375
S2	0.017	0.994	0.000	81.196	83.080	-1.398
S3	0.016	0.989	0.000	81.196	83.481	-1.370
S4	0.016	0.993	0.000	81.196	83.112	-1.365
S5	0.017	1.023	0.000	81.196	80.659	-1.347
S6	0.017	1.035	0.000	81.196	79.789	-1.358
S7	0.017	1.029	0.000	81.196	80.264	-1.372
S8	0.017	1.016	0.000	81.196	81.260	-1.359


Internal Reference Calibration, performed Wed May 22 07:44:11 2024:



	Raw (v)		Calibrated (v)		Results	
	Zero	Cal	Zero	Cal	Gain	Offset
CAL	0.000	0.000	0.016	1.222	1.000	0.000
Air Zero Calibration, performed Fri Apr 19 14:29:14 2024:						
	Raw (v)		Calibrated (v)		Results	
	Zero		Zero		Offset	
3'	0.000		0.000		0.000	
5'	0.000		0.000		0.000	
SUM						
S1	0.000		0.000		0.000	
S2	0.000		0.000		0.000	
S3	0.000		0.000		0.000	
S4	0.000		0.000		0.000	
S5	0.000		0.000		0.000	
S6	0.000		0.000		0.000	
S7	0.000		0.000		0.000	
S8	0.000		0.000		0.000	

Inclinometer Calibration Report						
Performed:	(Not Performed)					
	Low Read.	High Read.	Low Ref.	High Ref.		
X Accelerometer	0.00	1.00	0.00	1.00	gee	
Y Accelerometer	0.00	1.00	0.00	1.00	gee	
Z Accelerometer	0.00	1.00	0.00	1.00	gee	

Sensor	Offset (ft)	Schematic	Description	Length (ft)	O.D. (in)	Weight (lb)
GCT_FMWR	24.36		CENT-BC275-0000 Probe 2.75" Bowspring Centralizer	2.83	2.75	24.00
mSec_Count	24.36					
RBT_Status	24.36					
Error_Ct	24.36					
RBT_HV	22.09					
RBT ACCZ	14.69		RBT8-HTRCB-275 (FW2001-30) Probe 2.75" High Temperature RADII 8 Sector Bond Tool w/ external temperature	11.08	2.75	

RBT_ACCY	14.69		CENT-BC275-0000 Probe 2.75" Bowspring Centralizer	2.83	2.75	24.00
RBT_ACCX	14.69					
WVFSYNC	14.69					
WVFS8	14.69					
WVFS7	14.69					
WVFS6	14.69					
WVFS5	14.69					
WVFS4	14.69					
WVFS3	14.69					
WVFS2	14.69					
WVFS1	14.69					
WVFCAL	14.69					
WVF3FT	14.69					
WVF5FT	13.69					
GCT_HV	7.61					
CCL\$2	6.31	GCacc-GCL004 (GCL004_base) Probe High Temp Gamma Ray - CCL (6 Magnet) w/ Temp	7.28	2.75	92.00	
CCL\$1	6.31					
GCT_Temp	5.43					
GCT_IntTemp	2.00	Plug-FA108-0000 1.38" Bull Plug	0.33	1.38	1.00	
GR	1.75					
Dataset: 5-22-24.db: field/well/run1/pass8 Total length: 24.36 ft Total weight: 141.00 lb O.D.: 2.75 in						

## Log Variables

DatabaseC:\ProgramData\Warrior\Data\5-22-24.db  
Dataset field/well/run1/pass8/\_vars\_

### Top - Bottom

BOREID in	BOTTEMP degF	CASEOD in	CASETHCK in	CASEWGHT lb/ft	MAXAMPL mV	MINAMPL mV	MINATTN db/ft
7.875	100	4.5	0	11.6	81.2	1	0.8
PERFS	PPT usec	SRFTEMP degF	TDEPTH ft				
No	0	0	0				

### Variable Description

BOREID : Borehole I.D.  
BOTTEMP : Bottom Hole Temperature  
CASEOD : Casing O.D.  
CASETHCK : Casing Thickness

CASEWGHT : Casing Weight  
MAXAMPL : Maximum Amplitude  
MINAMPL : Minimum Amplitude  
MINATTN : Minimum Attenuation

PERFS : Perforation Flag  
PPT : Predicted Pipe Time  
SRFTEMP : Surface Temperature  
TDEPTH : Total Depth