

# **CRESTONE PEAK RESOURCES**

**ADAMS COUNTY  
SEC 28-T3S-R65W  
KING 3-65 28-29 4AH**

**OWB**

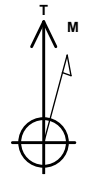
**Design: FINAL SURVEY**

## **Standard Survey Report**

**30 May, 2024**

Project: ADAMS COUNTY  
 Site: SEC 28-T3S-R65W  
 Well: KING 3-65 28-29 4AH  
 Wellbore: OWB  
 Design: FINAL SURVEY

PROJECT DETAILS: ADAMS COUNTY  
 Geodetic System: US State Plane 1983  
 Datum: North American Datum 1983  
 Ellipsoid: GRS 1980  
 Zone: Colorado Northern Zone  
 System Datum: Mean Sea Level



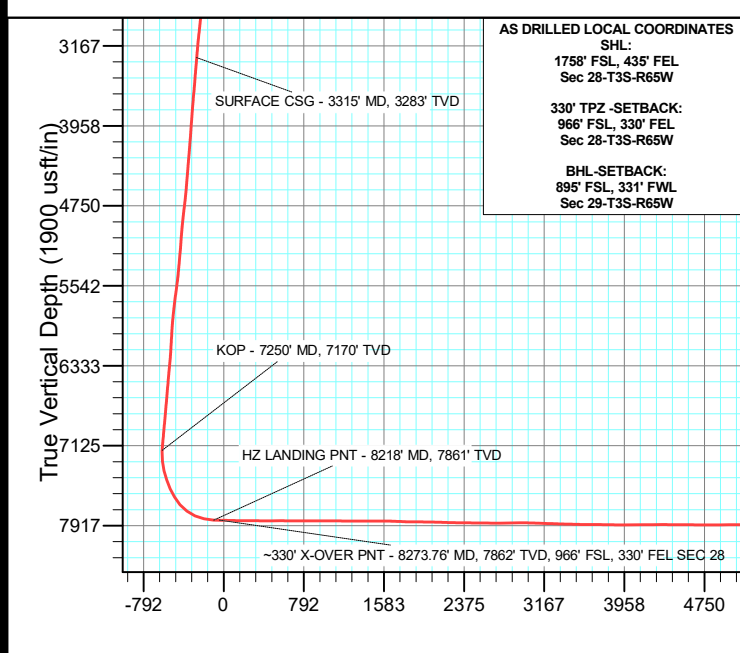
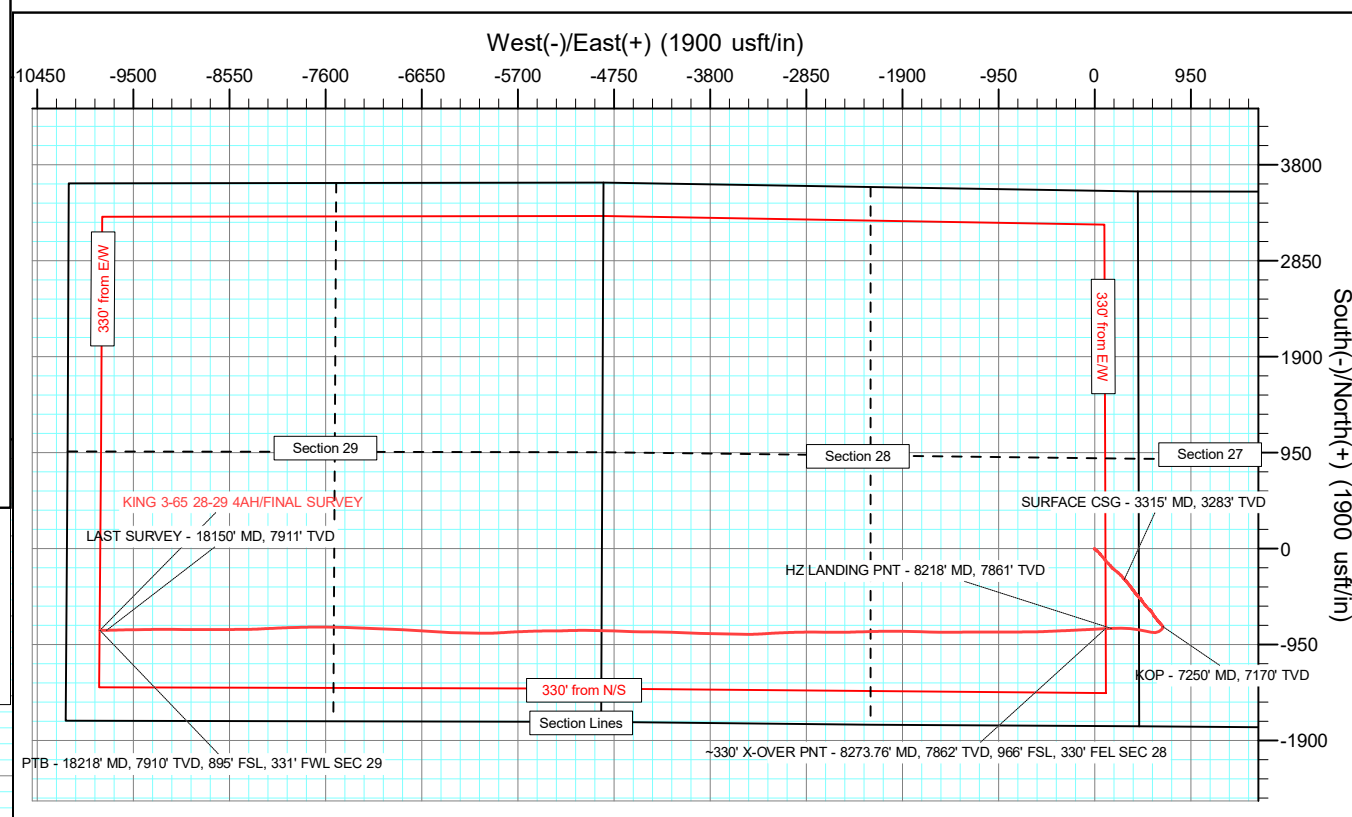
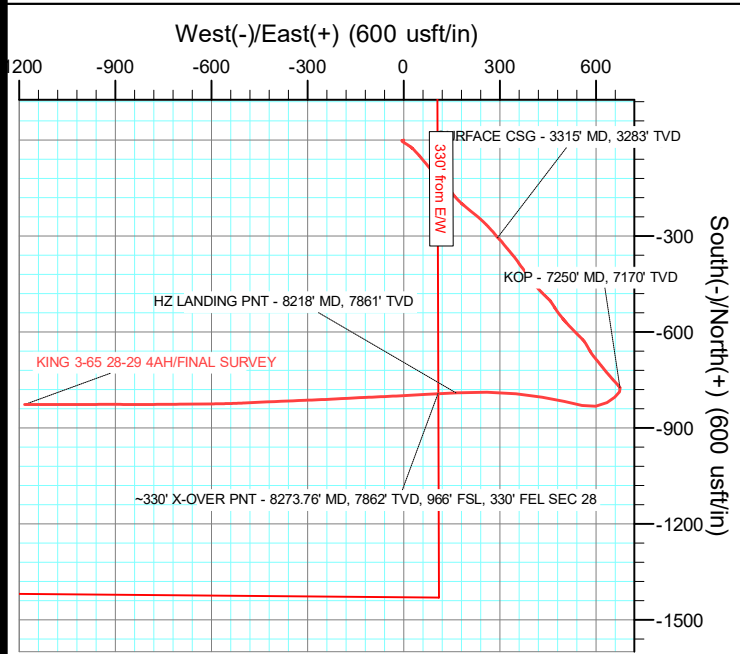
Azimuths to True North  
 Magnetic North: 7.43°  
 Magnetic Field  
 Strength: 51312.8nT  
 Dip Angle: 66.04°  
 Date: 5/21/2024  
 Model: IGRF2020

WELL DETAILS: KING 3-65 28-29 4AH

+N/-S	+E/-W	Northing	Easting	5585.00	Latitude	Longitude	Slot
0.00	0.00	1156291.50	3235875.97		39.759324°N	104.660996°W	

ANNOTATIONS

MD	Inc	Azi	TVD	+N/-S	+E/-W	VSec	Departure	Annotation
3315.00	7.81	137.85	3282.54	-304.70	293.09	-267.05	433.09	SURFACE CSG - 3315' MD, 3283' TVD
7250.00	6.99	148.43	7169.88	-773.68	674.43	-608.55	1039.71	KOP - 7250' MD, 7170' TVD
8218.00	88.46	267.55	7860.78	-790.22	163.07	-97.56	1585.85	HZ LANDING PNT - 8218' MD, 7861' TVD
8273.76	88.38	266.83	7862.31	-792.95	107.40	-41.85	1641.59	~330' X-OVER PNT - 8273.76' MD, 7862' TVD, 966' FSL, 330' FEL SEC 28
18150.00	90.81	268.84	7911.45	-809.51	-9762.89	9796.40	11516.60	LAST SURVEY - 18150' MD, 7911' TVD
18218.00	90.81	268.84	7910.48	-810.89	-9830.87	9864.26	11584.59	PTB - 18218' MD, 7910' TVD, 895' FSL, 331' FWL SEC 29



AS DRILLED LOCAL COORDINATES  
 SHL:  
 1758' FSL, 435' FEL  
 Sec 28-T3S-R65W  
 330' TPZ - SETBACK:  
 966' FSL, 330' FEL  
 Sec 28-T3S-R65W  
 BHL-SETBACK:  
 895' FSL, 331' FWL  
 Sec 29-T3S-R65W

Vertical Section at 265.28° (1900 usft/in)

# Civitas Resources

## Survey Report

<b>Company:</b> CRESTONE PEAK RESOURCES	<b>Local Co-ordinate Reference:</b> Well KING 3-65 28-29 4AH
<b>Project:</b> ADAMS COUNTY	<b>TVD Reference:</b> KB 25' @ 5610.00usft
<b>Site:</b> SEC 28-T3S-R65W	<b>MD Reference:</b> KB 25' @ 5610.00usft
<b>Well:</b> KING 3-65 28-29 4AH	<b>North Reference:</b> True
<b>Wellbore:</b> OWB	<b>Survey Calculation Method:</b> Minimum Curvature
<b>Design:</b> FINAL SURVEY	<b>Database:</b> EDM

<b>Project</b> ADAMS COUNTY		
<b>Map System:</b> US State Plane 1983	<b>System Datum:</b> Mean Sea Level	
<b>Geo Datum:</b> North American Datum 1983		
<b>Map Zone:</b> Colorado Northern Zone	Using geodetic scale factor	

<b>Site</b> SEC 28-T3S-R65W			
<b>Site Position:</b>	<b>Northing:</b> 1,154,535.24 usft	<b>Latitude:</b> 39.754491°N	
<b>From:</b> Lat/Long	<b>Easting:</b> 3,236,332.63 usft	<b>Longitude:</b> 104.659431°W	
<b>Position Uncertainty:</b> 0.00 usft	<b>Slot Radius:</b> 13.200 in	<b>Grid Convergence:</b> 0.54 °	

<b>Well</b> KING 3-65 28-29 4AH			
<b>Well Position</b>	<b>+N/-S</b> 0.00 usft	<b>Northing:</b> 1,156,291.50 usft	<b>Latitude:</b> 39.759324°N
	<b>+E/-W</b> 0.00 usft	<b>Easting:</b> 3,235,875.97 usft	<b>Longitude:</b> 104.660996°W
<b>Position Uncertainty</b>	0.00 usft	<b>Wellhead Elevation:</b> usft	<b>Ground Level:</b> 5,585.00 usft

<b>Wellbore</b> OWB					
Magnetics	Model Name	Sample Date	Declination (°)	Dip Angle (°)	Field Strength (nT)
	IGRF2020	5/21/2024	7.43	66.04	51,312.81905036

<b>Design</b> FINAL SURVEY				
<b>Audit Notes:</b>				
<b>Version:</b> 1.0	<b>Phase:</b> ACTUAL	<b>Tie On Depth:</b> 0.00		
Vertical Section:	Depth From (TVD) (usft)	+N/-S (usft)	+E/-W (usft)	Direction (°)
	0.00	0.00	0.00	265.28

<b>Survey Program</b>		<b>Date</b> 5/30/2024		
From (usft)	To (usft)	Survey (Wellbore)	Tool Name	Description
209.00	3,223.00	SURFACE SURVEY (OWB)	MWD OWSG	OWSG MWD - Standard
3,384.00	18,218.00	FINAL SURVEY (OWB)	MWD OWSG	OWSG MWD - Standard

Measured Depth (usft)	Inclination (°)	Azimuth (°)	Vertical Depth (usft)	+N/-S (usft)	+E/-W (usft)	Vertical Section (usft)	Dogleg Rate (°/100ft)	Build Rate (°/100ft)	Turn Rate (°/100ft)
0.00	0.00	0.00	0.00	0.00	0.00	0.00	0.00	0.00	0.00
209.00	2.03	252.93	208.96	-1.09	-3.54	3.62	0.97	0.97	0.00
300.00	1.28	200.09	299.92	-2.51	-5.43	5.62	1.78	-0.82	-58.07
390.00	2.25	124.38	389.89	-4.46	-4.32	4.67	2.55	1.08	-84.12
480.00	3.89	124.60	479.76	-7.19	-0.34	0.93	1.82	1.82	0.24
574.00	4.60	120.42	573.50	-10.91	5.53	-4.62	0.82	0.76	-4.45
667.00	4.86	122.67	666.18	-14.92	12.06	-10.80	0.34	0.28	2.42
762.00	6.14	123.90	760.74	-19.93	19.67	-17.96	1.35	1.35	1.29
857.00	7.91	135.18	855.03	-27.40	28.49	-26.14	2.35	1.86	11.87
951.00	8.04	137.25	948.12	-36.81	37.51	-34.36	0.34	0.14	2.20

# Civitas Resources

## Survey Report

<b>Company:</b>	CRESTONE PEAK RESOURCES	<b>Local Co-ordinate Reference:</b>	Well KING 3-65 28-29 4AH
<b>Project:</b>	ADAMS COUNTY	<b>TVD Reference:</b>	KB 25' @ 5610.00usft
<b>Site:</b>	SEC 28-T3S-R65W	<b>MD Reference:</b>	KB 25' @ 5610.00usft
<b>Well:</b>	KING 3-65 28-29 4AH	<b>North Reference:</b>	True
<b>Wellbore:</b>	OWB	<b>Survey Calculation Method:</b>	Minimum Curvature
<b>Design:</b>	FINAL SURVEY	<b>Database:</b>	EDM

Survey									
Measured Depth (usft)	Inclination (°)	Azimuth (°)	Vertical Depth (usft)	+N/-S (usft)	+E/-W (usft)	Vertical Section (usft)	Dogleg Rate (°/100ft)	Build Rate (°/100ft)	Turn Rate (°/100ft)
1,045.00	8.00	136.99	1,041.20	-46.42	46.44	-42.46	0.06	-0.04	-0.28
1,141.00	9.85	141.00	1,136.04	-57.69	56.16	-51.23	2.03	1.93	4.18
1,236.00	10.12	139.94	1,229.60	-70.39	66.65	-60.64	0.34	0.28	-1.12
1,331.00	9.46	140.69	1,323.21	-82.82	76.97	-69.90	0.71	-0.69	0.79
1,426.00	9.54	140.82	1,416.91	-94.97	86.89	-78.79	0.09	0.08	0.14
1,520.00	9.32	141.00	1,509.64	-106.92	96.60	-87.48	0.24	-0.23	0.19
1,615.00	8.66	138.79	1,603.47	-118.28	106.15	-96.07	0.78	-0.69	-2.33
1,710.00	8.75	136.19	1,697.38	-128.87	115.86	-104.88	0.42	0.09	-2.74
1,805.00	9.72	136.85	1,791.15	-139.94	126.35	-114.42	1.03	1.02	0.69
1,900.00	10.61	136.46	1,884.65	-152.13	137.86	-124.89	0.94	0.94	-0.41
1,994.00	11.14	138.27	1,976.97	-165.18	149.87	-135.78	0.67	0.56	1.93
2,089.00	8.44	140.56	2,070.57	-177.42	160.41	-145.28	2.87	-2.84	2.41
2,184.00	7.73	135.22	2,164.63	-187.34	169.34	-153.36	1.09	-0.75	-5.62
2,278.00	6.67	133.46	2,257.89	-195.58	177.75	-161.07	1.15	-1.13	-1.87
2,372.00	9.32	129.41	2,350.97	-204.17	187.60	-170.18	2.88	2.82	-4.31
2,466.00	8.53	129.72	2,443.83	-213.45	198.84	-180.62	0.84	-0.84	0.33
2,560.00	8.84	129.76	2,536.75	-222.53	209.76	-190.75	0.33	0.33	0.04
2,655.00	8.79	127.69	2,630.63	-231.64	221.11	-201.32	0.34	-0.05	-2.18
2,750.00	8.13	130.95	2,724.59	-240.48	231.93	-211.37	0.86	-0.69	3.43
2,845.00	9.10	133.51	2,818.52	-250.05	242.45	-221.07	1.10	1.02	2.69
2,940.00	8.97	133.33	2,912.34	-260.31	253.29	-231.03	0.14	-0.14	-0.19
3,035.00	9.94	137.65	3,006.05	-271.45	264.20	-240.99	1.26	1.02	4.55
3,129.00	9.68	136.59	3,098.68	-283.18	275.09	-250.88	0.34	-0.28	-1.13
3,223.00	8.62	143.07	3,191.48	-294.56	284.76	-259.58	1.57	-1.13	6.89
3,315.00	7.81	137.85	3,282.54	-304.70	293.09	-267.05	1.20	-0.88	-5.67
<b>SURFACE CSG - 3315' MD, 3283' TVD</b>									
3,384.00	7.25	133.20	3,350.95	-311.16	299.41	-272.82	1.20	-0.81	-6.74
3,480.00	8.44	141.53	3,446.05	-320.82	308.21	-280.80	1.71	1.24	8.68
3,575.00	7.78	141.35	3,540.10	-331.30	316.57	-288.26	0.70	-0.69	-0.19
3,669.00	9.15	139.54	3,633.07	-341.96	325.39	-296.18	1.48	1.46	-1.93
3,763.00	8.31	140.64	3,725.98	-352.90	334.55	-304.41	0.91	-0.89	1.17
3,857.00	7.51	139.68	3,819.09	-362.83	342.83	-311.84	0.86	-0.85	-1.02
3,951.00	7.95	143.20	3,912.23	-372.72	350.70	-318.87	0.69	0.47	3.74
4,046.00	7.29	147.12	4,006.39	-383.04	357.91	-325.21	0.88	-0.69	4.13
4,141.00	9.06	143.11	4,100.43	-394.09	365.67	-332.04	1.96	1.86	-4.22
4,235.00	7.87	141.22	4,193.40	-405.02	374.14	-339.58	1.30	-1.27	-2.01
4,329.00	9.32	143.42	4,286.34	-416.15	382.71	-347.21	1.58	1.54	2.34
4,424.00	8.00	143.91	4,380.26	-427.67	391.19	-354.71	1.39	-1.39	0.52
4,519.00	9.54	144.52	4,474.14	-439.43	399.65	-362.18	1.62	1.62	0.64
4,613.00	8.48	142.36	4,566.98	-451.26	408.41	-369.93	1.18	-1.13	-2.30
4,802.00	11.09	135.67	4,753.22	-475.30	429.63	-389.10	1.50	1.38	-3.54
4,898.00	9.72	134.65	4,847.64	-487.60	441.84	-400.26	1.44	-1.43	-1.06
4,993.00	7.82	132.98	4,941.53	-497.65	452.28	-409.84	2.02	-2.00	-1.76

# Civitas Resources

## Survey Report

<b>Company:</b>	CRESTONE PEAK RESOURCES	<b>Local Co-ordinate Reference:</b>	Well KING 3-65 28-29 4AH
<b>Project:</b>	ADAMS COUNTY	<b>TVD Reference:</b>	KB 25' @ 5610.00usft
<b>Site:</b>	SEC 28-T3S-R65W	<b>MD Reference:</b>	KB 25' @ 5610.00usft
<b>Well:</b>	KING 3-65 28-29 4AH	<b>North Reference:</b>	True
<b>Wellbore:</b>	OWB	<b>Survey Calculation Method:</b>	Minimum Curvature
<b>Design:</b>	FINAL SURVEY	<b>Database:</b>	EDM

Survey										
Measured Depth (usft)	Inclination (°)	Azimuth (°)	Vertical Depth (usft)	+N/-S (usft)	+E/-W (usft)	Vertical Section (usft)	Dogleg Rate (°/100ft)	Build Rate (°/100ft)	Turn Rate (°/100ft)	
5,087.00	9.68	145.89	5,034.44	-508.55	461.39	-418.02	2.87	1.98	13.73	
5,182.00	8.09	149.02	5,128.30	-520.90	469.31	-424.90	1.75	-1.67	3.29	
5,276.00	9.99	144.52	5,221.13	-533.21	477.45	-432.00	2.16	2.02	-4.79	
5,371.00	9.90	142.63	5,314.70	-546.41	487.19	-440.62	0.36	-0.09	-1.99	
5,466.00	8.79	141.04	5,408.44	-558.54	496.71	-449.11	1.20	-1.17	-1.67	
5,561.00	12.20	138.35	5,501.83	-571.69	507.95	-459.23	3.63	3.59	-2.83	
5,656.00	12.02	136.06	5,594.72	-586.31	521.48	-471.52	0.54	-0.19	-2.41	
5,750.00	10.87	135.97	5,686.85	-599.74	534.43	-483.32	1.22	-1.22	-0.10	
5,845.00	9.46	134.43	5,780.36	-611.64	546.24	-494.11	1.51	-1.48	-1.62	
5,940.00	8.40	133.64	5,874.20	-621.90	556.83	-503.83	1.12	-1.12	-0.83	
6,035.00	7.25	147.96	5,968.33	-631.77	565.04	-511.19	2.37	-1.21	15.07	
6,129.00	8.04	149.85	6,061.49	-642.48	571.48	-516.74	0.88	0.84	2.01	
6,223.00	7.38	150.91	6,154.64	-653.44	577.72	-522.05	0.72	-0.70	1.13	
6,318.00	9.54	147.61	6,248.60	-665.42	584.91	-528.23	2.33	2.27	-3.47	
6,412.00	10.08	140.34	6,341.23	-678.33	594.33	-536.56	1.44	0.57	-7.73	
6,508.00	8.35	140.69	6,435.99	-690.19	604.11	-545.33	1.80	-1.80	0.36	
6,603.00	9.19	141.75	6,529.88	-701.49	613.17	-553.43	0.90	0.88	1.12	
6,697.00	8.09	141.09	6,622.81	-712.53	621.98	-561.30	1.17	-1.17	-0.70	
6,791.00	9.01	140.60	6,715.76	-723.36	630.80	-569.20	0.98	0.98	-0.52	
6,886.00	7.95	138.44	6,809.72	-734.03	639.88	-577.38	1.16	-1.12	-2.27	
6,981.00	9.19	139.59	6,903.66	-744.72	649.16	-585.74	1.32	1.31	1.21	
7,076.00	8.00	136.55	6,997.59	-755.30	658.62	-594.31	1.34	-1.25	-3.20	
7,171.00	8.53	137.34	7,091.60	-765.28	667.94	-602.77	0.57	0.56	0.83	
7,250.00	6.99	148.43	7,169.88	-773.68	674.43	-608.55	2.71	-1.95	14.04	
<b>KOP - 7250' MD, 7170' TVD</b>										
7,266.00	6.72	151.26	7,185.77	-775.33	675.39	-609.37	2.71	-1.70	17.69	
7,361.00	10.56	213.18	7,279.85	-787.52	673.30	-606.28	9.96	4.04	65.18	
7,457.00	16.04	227.77	7,373.27	-803.81	658.65	-590.34	6.65	5.71	15.20	
7,551.00	21.03	240.37	7,462.40	-820.90	634.35	-564.72	6.78	5.31	13.40	
7,647.00	24.75	262.62	7,550.99	-832.02	599.37	-528.94	9.74	3.87	23.18	
7,740.00	30.93	281.18	7,633.34	-829.88	556.49	-486.39	11.38	6.65	19.96	
7,835.00	42.47	283.78	7,709.38	-817.47	501.20	-432.30	12.25	12.15	2.74	
7,930.00	53.69	278.31	7,772.78	-804.25	431.93	-364.35	12.56	11.81	-5.76	
8,025.00	67.17	276.72	7,819.55	-793.54	350.19	-283.77	14.26	14.19	-1.67	
8,120.00	76.98	270.20	7,848.78	-788.24	260.13	-194.45	12.21	10.33	-6.86	
8,214.00	88.47	267.60	7,860.67	-790.05	167.07	-101.55	12.53	12.22	-2.77	
8,218.00	88.46	267.55	7,860.78	-790.22	163.07	-97.56	1.29	-0.15	-1.28	
<b>HZ LANDING PNT - 8218' MD, 7861' TVD</b>										
8,273.76	88.38	266.83	7,862.31	-792.95	107.40	-41.85	1.29	-0.15	-1.28	
<b>-330' X-OVER PNT - 8273.76' MD, 7862' TVD, 966' FSL, 330' FEL SEC 28</b>										
8,310.00	88.33	266.37	7,863.35	-795.10	71.24	-5.64	1.29	-0.15	-1.28	
8,405.00	88.73	267.29	7,865.79	-800.35	-23.58	89.30	1.06	0.42	0.97	
8,500.00	89.62	267.43	7,867.16	-804.73	-118.47	184.22	0.95	0.94	0.15	
8,595.00	89.57	266.94	7,867.83	-809.39	-213.36	279.17	0.52	-0.05	-0.52	

# Civitas Resources

## Survey Report

<b>Company:</b>	CRESTONE PEAK RESOURCES	<b>Local Co-ordinate Reference:</b>	Well KING 3-65 28-29 4AH
<b>Project:</b>	ADAMS COUNTY	<b>TVD Reference:</b>	KB 25' @ 5610.00usft
<b>Site:</b>	SEC 28-T3S-R65W	<b>MD Reference:</b>	KB 25' @ 5610.00usft
<b>Well:</b>	KING 3-65 28-29 4AH	<b>North Reference:</b>	True
<b>Wellbore:</b>	OWB	<b>Survey Calculation Method:</b>	Minimum Curvature
<b>Design:</b>	FINAL SURVEY	<b>Database:</b>	EDM

Survey										
Measured Depth (usft)	Inclination (°)	Azimuth (°)	Vertical Depth (usft)	+N/-S (usft)	+E/-W (usft)	Vertical Section (usft)	Dogleg Rate (°/100ft)	Build Rate (°/100ft)	Turn Rate (°/100ft)	
8,690.00	89.88	267.78	7,868.28	-813.77	-308.25	374.11	0.94	0.33	0.88	
8,784.00	90.19	267.47	7,868.23	-817.66	-402.17	468.03	0.47	0.33	-0.33	
8,879.00	89.97	267.25	7,868.09	-822.04	-497.07	562.96	0.33	-0.23	-0.23	
8,974.00	89.13	269.41	7,868.84	-824.81	-592.02	657.82	2.44	-0.88	2.27	
9,069.00	89.84	269.37	7,869.69	-825.82	-687.01	752.57	0.75	0.75	-0.04	
9,163.00	90.54	269.67	7,869.38	-826.61	-781.01	846.31	0.81	0.74	0.32	
9,257.00	89.88	270.33	7,869.04	-826.61	-875.01	939.99	0.99	-0.70	0.70	
9,352.00	90.46	269.59	7,868.75	-826.67	-970.00	1,034.68	0.99	0.61	-0.78	
9,447.00	88.73	270.16	7,869.43	-826.88	-1,065.00	1,129.37	1.92	-1.82	0.60	
9,541.00	89.62	269.85	7,870.78	-826.87	-1,158.99	1,223.04	1.00	0.95	-0.33	
9,636.00	89.70	269.54	7,871.34	-827.38	-1,253.98	1,317.75	0.34	0.08	-0.33	
9,730.00	89.66	268.97	7,871.87	-828.60	-1,347.97	1,411.53	0.61	-0.04	-0.61	
9,824.00	90.19	270.03	7,871.99	-829.42	-1,441.97	1,505.27	1.26	0.56	1.13	
9,919.00	90.37	271.13	7,871.53	-828.46	-1,536.96	1,599.86	1.17	0.19	1.16	
10,013.00	87.54	271.48	7,873.24	-826.32	-1,630.91	1,693.32	3.03	-3.01	0.37	
10,109.00	87.41	271.08	7,877.47	-824.18	-1,726.79	1,788.70	0.44	-0.14	-0.42	
10,204.00	90.54	271.57	7,879.17	-821.98	-1,821.74	1,883.15	3.33	3.29	0.52	
10,298.00	88.78	271.00	7,879.73	-819.87	-1,915.71	1,976.62	1.97	-1.87	-0.61	
10,393.00	89.26	270.29	7,881.35	-818.80	-2,010.69	2,071.19	0.90	0.51	-0.75	
10,488.00	87.80	268.70	7,883.79	-819.64	-2,105.65	2,165.90	2.27	-1.54	-1.67	
10,583.00	88.73	268.53	7,886.67	-821.93	-2,200.58	2,260.70	1.00	0.98	-0.18	
10,678.00	89.48	268.62	7,888.15	-824.30	-2,295.54	2,355.53	0.80	0.79	0.09	
10,773.00	89.31	267.87	7,889.15	-827.21	-2,390.49	2,450.39	0.81	-0.18	-0.79	
10,867.00	89.40	269.98	7,890.21	-828.97	-2,484.46	2,544.19	2.25	0.10	2.24	
10,962.00	89.13	270.03	7,891.43	-828.96	-2,579.45	2,638.86	0.29	-0.28	0.05	
11,056.00	90.54	271.00	7,891.70	-828.12	-2,673.44	2,732.47	1.82	1.50	1.03	
11,151.00	90.99	270.11	7,890.43	-827.20	-2,768.43	2,827.06	1.05	0.47	-0.94	
11,244.00	91.03	269.10	7,888.79	-827.84	-2,861.41	2,919.78	1.09	0.04	-1.09	
11,338.00	88.38	268.70	7,889.28	-829.64	-2,955.38	3,013.58	2.85	-2.82	-0.43	
11,434.00	88.20	267.78	7,892.14	-832.59	-3,051.29	3,109.41	0.98	-0.19	-0.96	
11,528.00	88.20	267.21	7,895.09	-836.69	-3,145.16	3,203.29	0.61	0.00	-0.61	
11,624.00	87.76	265.97	7,898.48	-842.40	-3,240.93	3,299.21	1.37	-0.46	-1.29	
11,718.00	88.82	267.74	7,901.28	-847.55	-3,334.74	3,393.12	2.19	1.13	1.88	
11,814.00	88.33	269.23	7,903.67	-850.09	-3,430.67	3,488.94	1.63	-0.51	1.55	
11,908.00	89.88	272.41	7,905.14	-848.75	-3,524.63	3,582.48	3.76	1.65	3.38	
12,003.00	89.48	271.08	7,905.67	-845.85	-3,619.59	3,676.87	1.46	-0.42	-1.40	
12,097.00	89.31	270.78	7,906.66	-844.33	-3,713.57	3,770.41	0.37	-0.18	-0.32	
12,191.00	88.73	271.22	7,908.27	-842.69	-3,807.54	3,863.93	0.77	-0.62	0.47	
12,286.00	90.77	272.45	7,908.68	-839.65	-3,902.48	3,958.30	2.51	2.15	1.29	
12,476.00	90.32	272.27	7,906.88	-831.82	-4,092.31	4,146.84	0.26	-0.24	-0.09	
12,570.00	90.28	271.79	7,906.39	-828.49	-4,186.25	4,240.19	0.51	-0.04	-0.51	
12,665.00	90.06	271.00	7,906.10	-826.18	-4,281.22	4,334.65	0.86	-0.23	-0.83	
12,760.00	89.44	270.47	7,906.52	-824.96	-4,376.21	4,429.22	0.86	-0.65	-0.56	

# Civitas Resources

## Survey Report

<b>Company:</b>	CRESTONE PEAK RESOURCES	<b>Local Co-ordinate Reference:</b>	Well KING 3-65 28-29 4AH
<b>Project:</b>	ADAMS COUNTY	<b>TVD Reference:</b>	KB 25' @ 5610.00usft
<b>Site:</b>	SEC 28-T3S-R65W	<b>MD Reference:</b>	KB 25' @ 5610.00usft
<b>Well:</b>	KING 3-65 28-29 4AH	<b>North Reference:</b>	True
<b>Wellbore:</b>	OWB	<b>Survey Calculation Method:</b>	Minimum Curvature
<b>Design:</b>	FINAL SURVEY	<b>Database:</b>	EDM

Survey										
Measured Depth (usft)	Inclination (°)	Azimuth (°)	Vertical Depth (usft)	+N/-S (usft)	+E/-W (usft)	Vertical Section (usft)	Dogleg Rate (°/100ft)	Build Rate (°/100ft)	Turn Rate (°/100ft)	
12,856.00	89.88	270.42	7,907.09	-824.22	-4,472.21	4,524.83	0.46	0.46	-0.05	
12,950.00	89.26	271.83	7,907.79	-822.37	-4,566.19	4,618.33	1.64	-0.66	1.50	
13,140.00	90.32	271.79	7,908.49	-816.37	-4,756.09	4,807.10	0.56	0.56	-0.02	
13,234.00	89.93	271.26	7,908.28	-813.87	-4,850.05	4,900.54	0.70	-0.41	-0.56	
13,329.00	90.68	271.22	7,907.78	-811.81	-4,945.03	4,995.03	0.79	0.79	-0.04	
13,423.00	90.15	270.20	7,907.10	-810.65	-5,039.02	5,088.60	1.22	-0.56	-1.09	
13,518.00	89.22	269.19	7,907.62	-811.15	-5,134.01	5,183.32	1.45	-0.98	-1.06	
13,613.00	88.47	267.74	7,909.54	-813.70	-5,228.96	5,278.15	1.72	-0.79	-1.53	
13,708.00	90.46	270.11	7,910.42	-815.48	-5,323.92	5,372.94	3.26	2.09	2.49	
13,898.00	90.50	268.57	7,908.83	-817.67	-5,513.90	5,562.45	0.81	0.02	-0.81	
13,993.00	90.10	268.00	7,908.33	-820.51	-5,608.85	5,657.32	0.73	-0.42	-0.60	
14,088.00	89.40	267.29	7,908.75	-824.41	-5,703.77	5,752.24	1.05	-0.74	-0.75	
14,182.00	91.74	266.63	7,907.81	-829.40	-5,797.63	5,846.19	2.59	2.49	-0.70	
14,276.00	91.16	266.37	7,905.43	-835.14	-5,891.42	5,940.13	0.68	-0.62	-0.28	
14,371.00	91.52	269.41	7,903.21	-838.63	-5,986.32	6,035.00	3.22	0.38	3.20	
14,465.00	91.91	270.51	7,900.40	-838.70	-6,080.28	6,128.64	1.24	0.41	1.17	
14,558.00	91.12	271.52	7,897.94	-837.05	-6,173.23	6,221.14	1.38	-0.85	1.09	
14,652.00	91.47	270.86	7,895.82	-835.10	-6,267.18	6,314.62	0.79	0.37	-0.70	
14,747.00	90.19	272.41	7,894.44	-832.39	-6,362.13	6,409.02	2.12	-1.35	1.63	
14,937.00	89.88	273.90	7,894.32	-821.93	-6,551.84	6,597.23	0.80	-0.16	0.78	
15,032.00	89.62	273.51	7,894.74	-815.79	-6,646.64	6,691.20	0.49	-0.27	-0.41	
15,126.00	89.44	273.29	7,895.51	-810.22	-6,740.47	6,784.26	0.30	-0.19	-0.23	
15,220.00	89.66	272.98	7,896.25	-805.08	-6,834.32	6,877.37	0.40	0.23	-0.33	
15,316.00	89.53	272.98	7,896.93	-800.09	-6,930.19	6,972.51	0.14	-0.14	0.00	
15,410.00	89.66	272.27	7,897.59	-795.78	-7,024.09	7,065.73	0.77	0.14	-0.76	
15,505.00	89.93	271.44	7,897.93	-792.71	-7,119.04	7,160.11	0.92	0.28	-0.87	
15,599.00	88.60	272.27	7,899.14	-789.66	-7,212.98	7,253.48	1.67	-1.41	0.88	
15,695.00	88.73	272.71	7,901.37	-785.50	-7,308.86	7,348.70	0.48	0.14	0.46	
15,789.00	88.51	271.75	7,903.64	-781.84	-7,402.76	7,441.98	1.05	-0.23	-1.02	
15,883.00	88.33	271.57	7,906.23	-779.12	-7,496.69	7,535.36	0.27	-0.19	-0.19	
15,977.00	88.03	271.13	7,909.21	-776.90	-7,590.61	7,628.79	0.57	-0.32	-0.47	
16,073.00	88.51	268.97	7,912.11	-776.82	-7,686.56	7,724.41	2.30	0.50	-2.25	
16,167.00	89.35	268.62	7,913.87	-778.80	-7,780.52	7,818.21	0.97	0.89	-0.37	
16,261.00	89.40	268.40	7,914.89	-781.24	-7,874.49	7,912.06	0.24	0.05	-0.23	
16,356.00	89.88	268.31	7,915.49	-783.97	-7,969.45	8,006.92	0.51	0.51	-0.09	
16,450.00	89.66	267.29	7,915.87	-787.58	-8,063.37	8,100.83	1.11	-0.23	-1.09	
16,544.00	89.70	267.51	7,916.39	-791.84	-8,157.28	8,194.76	0.24	0.04	0.23	
16,638.00	89.84	266.63	7,916.77	-796.64	-8,251.15	8,288.71	0.95	0.15	-0.94	
16,733.00	90.90	269.72	7,916.16	-799.67	-8,346.09	8,383.58	3.44	1.12	3.25	
16,827.00	91.38	269.06	7,914.29	-800.67	-8,440.06	8,477.32	0.87	0.51	-0.70	
16,922.00	90.15	269.89	7,913.02	-801.54	-8,535.05	8,572.05	1.56	-1.29	0.87	
17,017.00	90.50	269.98	7,912.48	-801.65	-8,630.05	8,666.74	0.38	0.37	0.09	
17,111.00	90.50	269.85	7,911.66	-801.79	-8,724.04	8,760.43	0.14	0.00	-0.14	
17,205.00	91.16	268.84	7,910.30	-802.86	-8,818.03	8,854.18	1.28	0.70	-1.07	

# Civitas Resources

## Survey Report

<b>Company:</b> CRESTONE PEAK RESOURCES	<b>Local Co-ordinate Reference:</b> Well KING 3-65 28-29 4AH
<b>Project:</b> ADAMS COUNTY	<b>TVD Reference:</b> KB 25' @ 5610.00usft
<b>Site:</b> SEC 28-T3S-R65W	<b>MD Reference:</b> KB 25' @ 5610.00usft
<b>Well:</b> KING 3-65 28-29 4AH	<b>North Reference:</b> True
<b>Wellbore:</b> OWB	<b>Survey Calculation Method:</b> Minimum Curvature
<b>Design:</b> FINAL SURVEY	<b>Database:</b> EDM

Survey									
Measured Depth (usft)	Inclination (°)	Azimuth (°)	Vertical Depth (usft)	+N/-S (usft)	+E/-W (usft)	Vertical Section (usft)	Dogleg Rate (°/100ft)	Build Rate (°/100ft)	Turn Rate (°/100ft)
17,301.00	89.26	271.17	7,909.94	-802.85	-8,914.01	8,949.84	3.13	-1.98	2.43
17,395.00	89.31	270.11	7,911.12	-801.80	-9,008.00	9,043.42	1.13	0.05	-1.13
17,489.00	89.09	270.47	7,912.43	-801.33	-9,101.99	9,137.06	0.45	-0.23	0.38
17,584.00	90.01	270.16	7,913.18	-800.81	-9,196.98	9,231.69	1.02	0.97	-0.33
17,679.00	89.84	269.50	7,913.30	-801.09	-9,291.98	9,326.39	0.72	-0.18	-0.69
17,773.00	90.10	269.15	7,913.35	-802.19	-9,385.98	9,420.15	0.46	0.28	-0.37
17,868.00	89.97	269.23	7,913.29	-803.54	-9,480.97	9,514.93	0.16	-0.14	0.08
17,963.00	90.28	268.79	7,913.08	-805.18	-9,575.95	9,609.73	0.57	0.33	-0.46
18,057.00	90.46	268.53	7,912.48	-807.38	-9,669.92	9,703.57	0.34	0.19	-0.28
18,150.00	90.81	268.84	7,911.45	-809.51	-9,762.89	9,796.40	0.50	0.38	0.33
<b>LAST SURVEY - 18150' MD, 7911' TVD</b>									
18,218.00	90.81	268.84	7,910.49	-810.89	-9,830.87	9,864.26	0.00	0.00	0.00
<b>PTB - 18218' MD, 7910' TVD, 895' FSL, 331' FWL SEC 29</b>									

Design Targets									
Target Name	Dip Angle (°)	Dip Dir. (°)	TVD (usft)	+N/-S (usft)	+E/-W (usft)	Northing (usft)	Easting (usft)	Latitude	Longitude
LP-KING 3-65 28-29 4AI - hit/miss target - Shape	0.00	0.00	7,860.00	-838.91	107.40	1,155,453.65	3,235,991.31	39.757021°N	104.660614°W
- actual wellpath misses target center by 45.95usft at 8276.41usft MD (7862.39 TVD, -793.10 N, 104.75 E)									
- Point									
PBHL-KING 3-65 28-29 - hit/miss target - Shape	0.00	0.00	7,940.00	-785.98	-9,831.64	1,155,412.54	3,226,052.28	39.757161°N	104.695965°W
- actual wellpath misses target center by 38.63usft at 18217.85usft MD (7910.49 TVD, -810.88 N, -9830.72 E)									
- Point									

Design Annotations					
Measured Depth (usft)	Vertical Depth (usft)	Local Coordinates		Comment	
		+N/-S (usft)	+E/-W (usft)		
3,315.00	3,282.54	-304.70	293.09	SURFACE CSG - 3315' MD, 3283' TVD	
7,250.00	7,169.88	-773.68	674.43	KOP - 7250' MD, 7170' TVD	
8,218.00	7,860.78	-790.22	163.07	HZ LANDING PNT - 8218' MD, 7861' TVD	
8,273.76	7,862.31	-792.95	107.40	~330' X-OVER PNT - 8273.76' MD, 7862' TVD, 966' FSL, 330' FEL SEC 28	
18,150.00	7,911.45	-809.51	-9,762.89	LAST SURVEY - 18150' MD, 7911' TVD	
18,218.00	7,910.49	-810.89	-9,830.87	PTB - 18218' MD, 7910' TVD, 895' FSL, 331' FWL SEC 29	

Checked By: \_\_\_\_\_ Approved By: \_\_\_\_\_ Date: \_\_\_\_\_