



King 3-65 28-29 2AH	
Resources 9 2AH	Log m Depth Maxim

MD
5":100'

Company: Crestone Peak Resources
Well Name: King 3-65 28-29 2AH
API: 55-001-10565
County/Parish: Adams
State: Colorado
Country: United States of America
Job number: AEP-RM-204689
Field: Wattenberg
Rig ID: Patterson 345
Survey Company: Altitude Energy Partners LLC
Day MWD Brian Casey
Night MWD Steven Varhalla

Run	Tool SOND-0071	Gamma CAL	Bit Size	Survey
1	XGM10135	8.241	8.5"	70.00 R
2				
3				
4				
5				

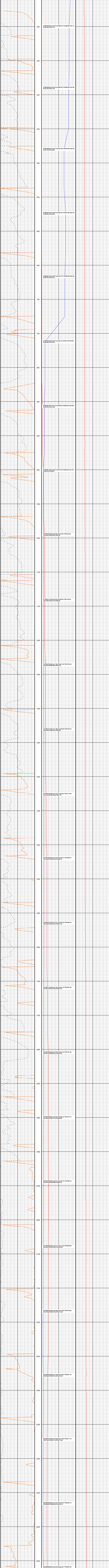
Log measurements: GAMMA	
Depth measured from: RKB	
Maximum temperature: 269	
	Depth
Start:	0 ft
End:	18345 ft
Casing	

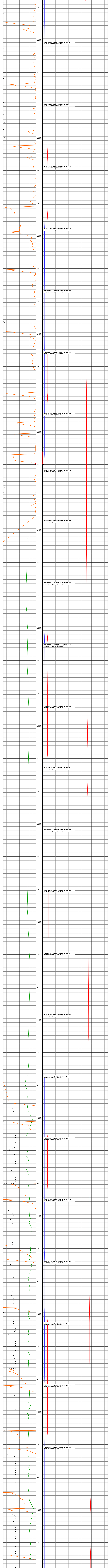
[illegible]

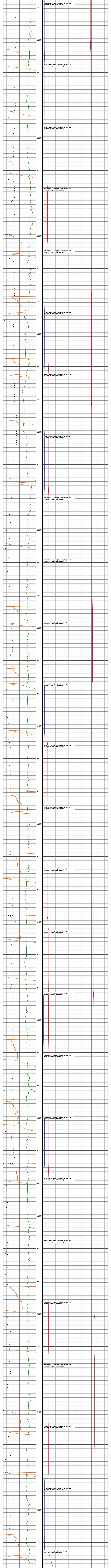
conjunction with services performed but will not be held liable or responsible for the accuracy of measurement or interpretation.

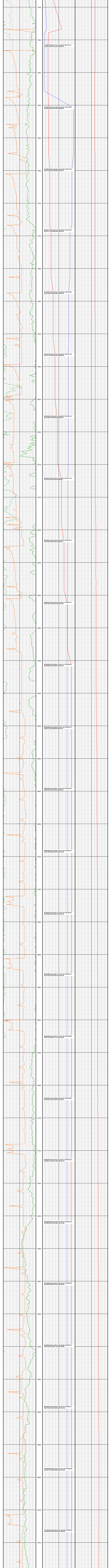
The screenshot displays a well log software interface with five main tracks on the left and a data table on the right. The tracks are: Gamma (API), ROP (ft/min), Inclination (deg), Azimuth (deg), and Bottom Hole Temp (deg). The Gamma track shows a green line at approximately 200 API. The ROP track shows an orange line at approximately 800 ft/min. The Inclination track shows a red line at 0 degrees. The Azimuth track shows a blue line at 300 degrees. The Bottom Hole Temp track shows a red line at approximately 100 degrees. The log is plotted against depth from 0 to 200 feet. The data table on the right contains the following information:

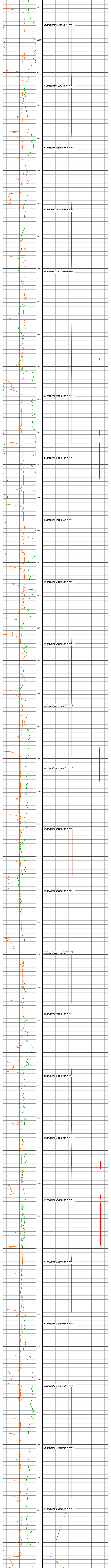
Well ID	MD (ft)	Gamma (API)	ROP (ft/min)	Inclination (deg)	Azimuth (deg)	BHT (deg)
W1	200.00	200.00	800.00	0.00	300.00	100.00

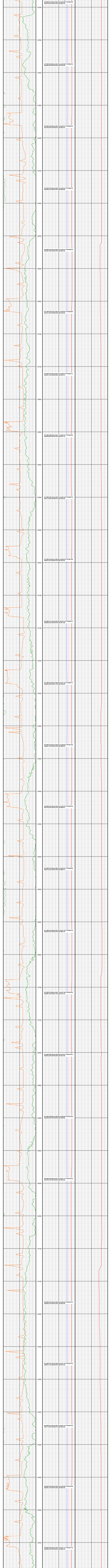
[illegible]

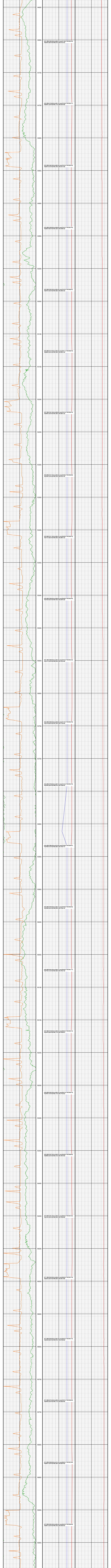


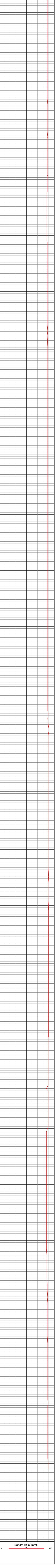
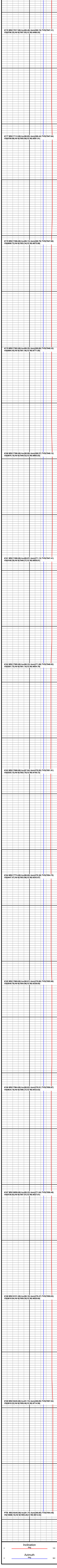












#176 MD(17017.00) Inc(89.48) Azm(268.19) TVD(7947.31)
VS(8706.35) N-S(1957.65) E-W(-8486.93)

#177 MD(17112.00) Inc(89.35) Azm(268.44) TVD(7947.04)
VS(8890.73) N-S(1955.68) E-W(-8581.81)

#178 MD(17206.00) Inc(89.13) Azm(268.70) TVD(7948.06)
VS(8890.73) N-S(1955.34) E-W(-8675.88)

#179 MD(17302.00) Inc(89.35) Azm(268.06) TVD(7948.33)
VS(8904.43) N-S(1951.46) E-W(-8771.83)

#180 MD(17396.00) Inc(90.30) Azm(268.57) TVD(7948.12)
VS(9076.19) N-S(1949.52) E-W(-8865.83)

#181 MD(17490.00) Inc(89.97) Azm(271.13) TVD(7947.41)
VS(9168.29) N-S(1949.27) E-W(-8959.81)

#182 MD(17585.00) Inc(88.33) Azm(271.08) TVD(7948.82)
VS(9261.75) N-S(1951.10) E-W(-9054.78)

#183 MD(17680.00) Inc(87.94) Azm(270.95) TVD(7951.91)
VS(9355.15) N-S(1952.79) E-W(-9149.72)

#184 MD(17774.00) Inc(88.50) Azm(270.38) TVD(7954.75)
VS(9447.47) N-S(1953.88) E-W(-9243.67)

#185 MD(17869.00) Inc(90.01) Azm(270.86) TVD(7955.90)
VS(9540.79) N-S(1954.90) E-W(-9338.65)

#186 MD(17964.00) Inc(88.32) Azm(270.91) TVD(7956.87)
VS(9634.19) N-S(1956.37) E-W(-9433.63)

#187 MD(18058.00) Inc(89.22) Azm(271.04) TVD(7958.48)
VS(9726.63) N-S(1957.97) E-W(-9527.61)

#188 MD(18151.00) Inc(90.10) Azm(270.47) TVD(7959.03)
VS(9818.04) N-S(1959.20) E-W(-9620.60)

#189 MD(18245.00) Inc(91.74) Azm(269.85) TVD(7957.52)
VS(9910.22) N-S(1959.46) E-W(-9714.58)

PTB: MD(18345.00) Inc(91.74) Azm(269.85) TVD(7957.48)
VS(10008.16) N-S(1959.20) E-W(-9814.53)