



**RADAIL BOND LOG  
GAMMA RAY  
CCL / VDL / MAP**

Company CHEVRON  
Well WALCKER USX AB 01-14P  
Field WATTENBERG 90750  
County WELD  
State CO. Country U.S.A.

Company CHEVRON  
Well WALCKER USX AB 01-14P  
Field WATTENBERG 90750  
County WELD  
State CO. Country U.S.A.

Location: 660' FSL & 1980' FWL  
SE SW  
APL #: 05-123-31171  
SEC 1 TWP 7N RGE 64W  
Permanent Datum GL Elevation 4828'  
Log Measured From KB 13'  
Drilling Measured From KB  
Other Services NONE  
Elevation K.B. 4841'  
D.F. 4840'  
G.L. 4828'

Date MAY 30th, 2024  
Run Number 1  
Depth Driller 7200'  
Depth Logger 2218'  
Bottom Logged Interval 2211'  
Top Log Interval SURFACE  
Open Hole Size 8-5/8"  
Type Fluid WATER  
Density / Viscosity 8.3#  
Max. Recorded Temp. N/A  
Estimated Cement Top N/A  
Time Well Ready N/A  
Time Logger on Bottom N/A  
Equipment Number DSS HSR10 002  
Location MILLIKEN, CO  
Recorded By T. VAN NEST  
Witnessed By MR. CRAIG EAST

Borehole Record			Tubing Record				
Run Number	Bit	From	To	Size	Weight	From	To

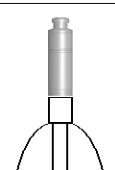
Record	Size	Wgt/Ft	Top	Bottom
Casing Record	8-5/8"	24# J-55	SURFACE	795'
Surface String	4-1/2"	11.6# M-80	SURFACE	7181'
Prot. String				
Production String				
Liner				

<<< Fold Here >>>

All interpretations are opinions based on inferences from electrical or other measurements and we cannot and do not guarantee the accuracy or correctness of any interpretation, and we shall not, except in the case of gross or willful negligence on our part, be liable or responsible for any loss, costs, damages, or expenses incurred or sustained by anyone resulting from any interpretation made by any of our officers, agents or employees. These interpretations are also subject to our general terms and conditions set out in our current Price Schedule.

**Comments**

**NO CORRELATION LOGS AVAILBLE**

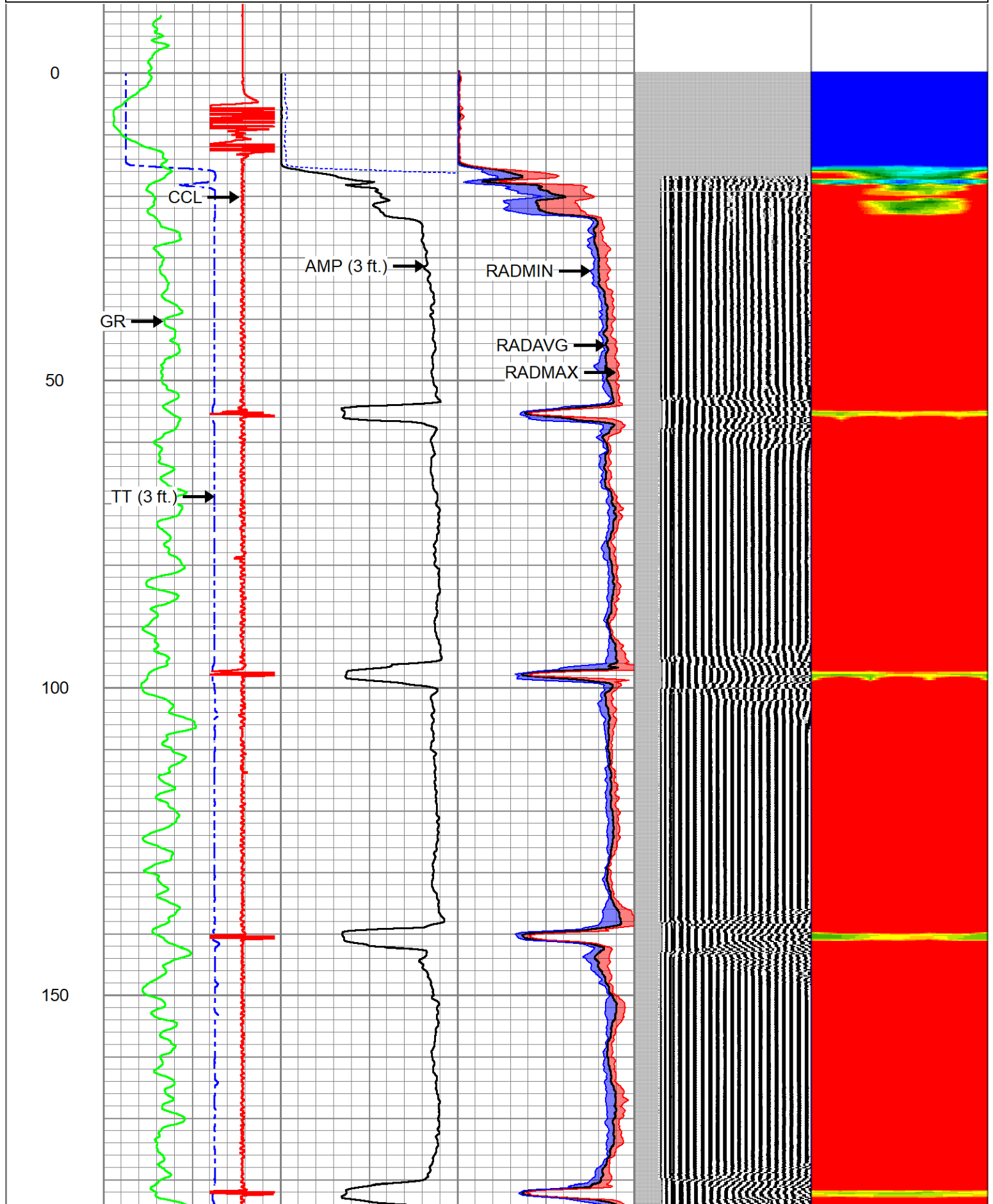
Sensor	Offset (ft)	Schematic	Description	Length (ft)	O.D. (in)	Weight (lb)
			Cable_Head-1_7/16 Titan 1 7/16" Cable Head	1.02	1.44	3.31

			PROBE-1.688_bow Bowspring centralizer for 1 11/16" Probe CBL	3.17	1.69	10.00
CCL	0.00					
GR	0.97					
			DSS_HSR_ELE-DSS_HSR_10_ELE (HSR10 0000) DSS 1 11/16" HSR Bond tool - Electronics Module	5.99	1.69	27.50
ROTV	5.24					
TCF	5.24					
THV	5.24					
INTEMP	5.24		CENT-DSS-RAC11-MID (RAC11MID-0000) DSS 1 11/16" MID Roller Arm Centralizer	2.61	1.69	16.00
PNEG	5.24					
PPOS	5.24					
GRHV	5.24					
WVFS6	9.77					
WVFS5	9.77					
WVFS4	9.77					
WVFS3	9.77					
WVFS2	9.77					
WVFS1	9.77		DSS_HSR_SND-DSS_HSR_10_SND (HSR10 0000) DSS 1 11/16" HSR Bond tool - Sonde Module	8.26	1.69	41.50
WVFCAL	10.27					
WVF3FT	10.27					
WVF5FT	11.27					
TEMP	15.77					
WVFSYNC	16.11					
			PROBE-1.688_bow Bowspring centralizer for 1 11/16" Probe CBL	3.17	1.69	10.00

et: chevron walcker usx ab01-14p.db: WATTENBERG\_90750/WALCKER\_USX\_AB01-14P/DSS\_HSR\_10\_RBL\_RBL\_D/me  
 length: 24.21 ft  
 weight: 108.31 lb  
 1.69 in

Database File chevron walcker usx ab01-14p.db  
 Dataset Pathname WATTENBERG\_90750/WALCKER\_USX\_AB01-14P/DSS\_HSR\_10\_RBL\_RBL\_D/merge1.1  
 Presentation Format ranger\_dss\_radial  
 Dataset Creation Fri May 31 08:05:01 2024  
 Charted by Depth in Foot scaled 1:240

TT (3 ft.)		AMP (3 ft.)		0	RADAVG	100	VDL (5 ft.)		1	RADIAL MAP	6
450	(usec)	100	0	(mV)	100	0	RADMAX	100	200	(usec)	1200
-20000 CCL 20000		3' Amplitude x5		0		RADMIN		0		100	
0	GR (GAPI)	150	0	(mV)	20						



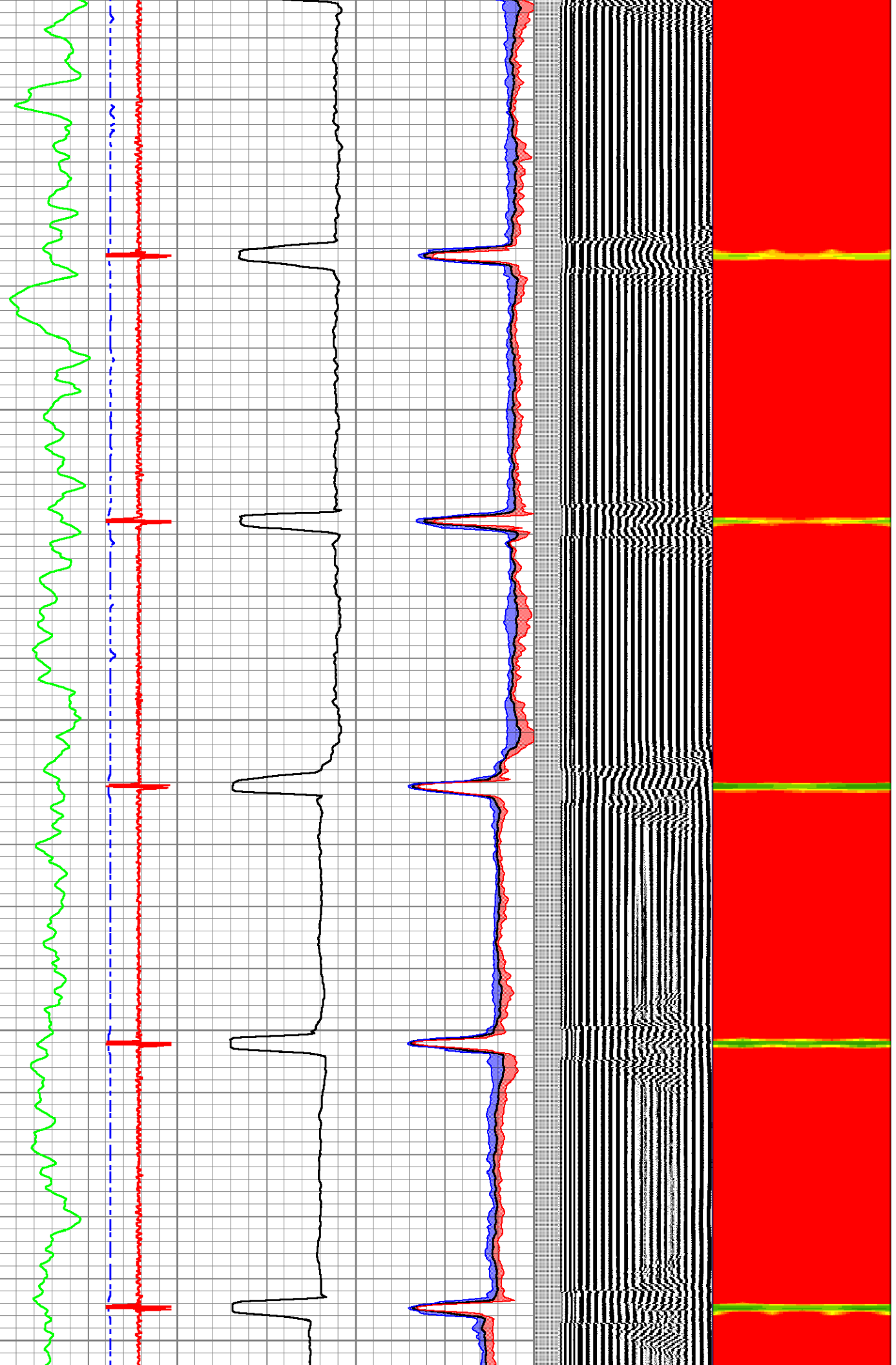
200

250

300

350

400

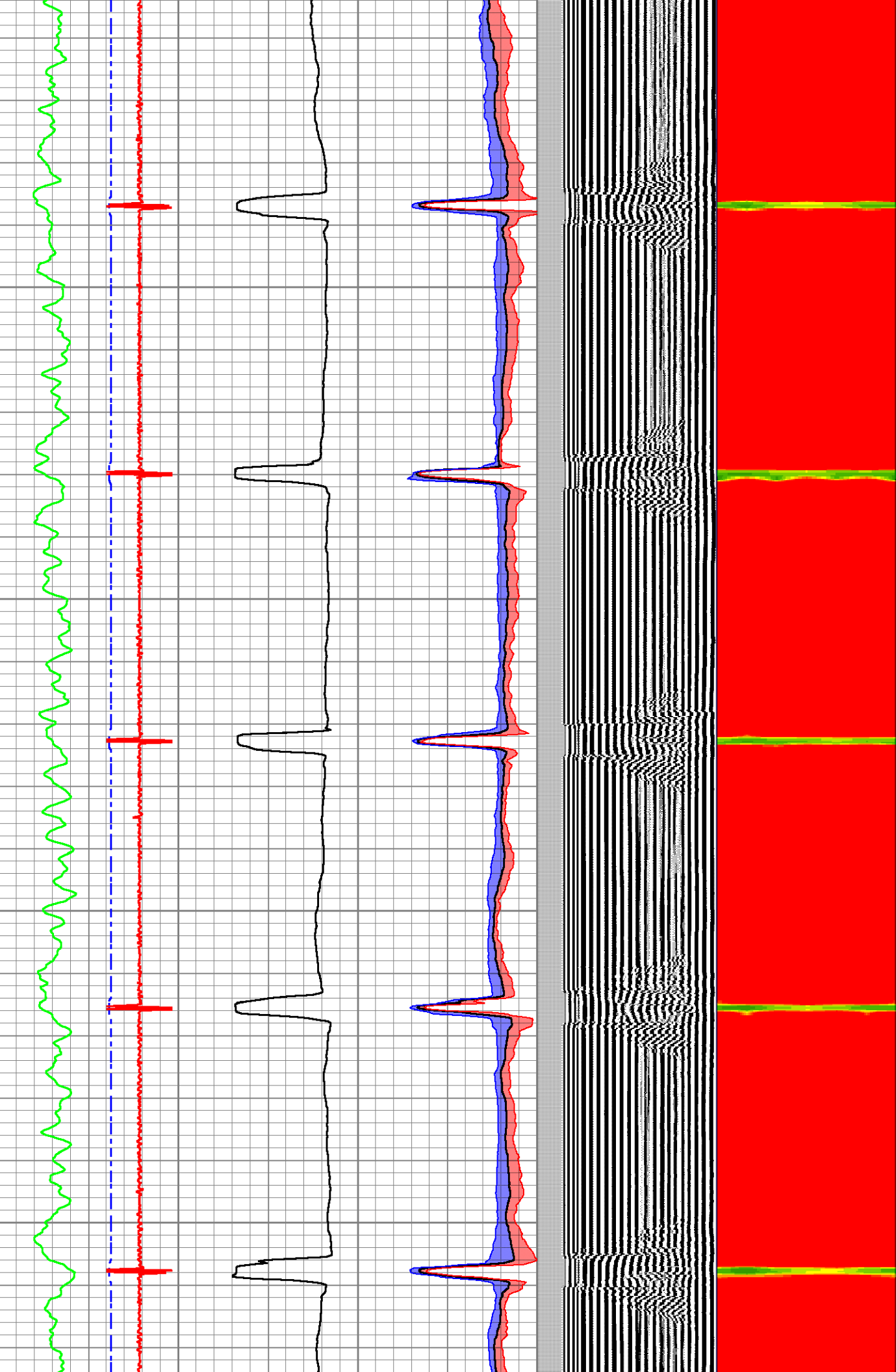


450

500

550

600

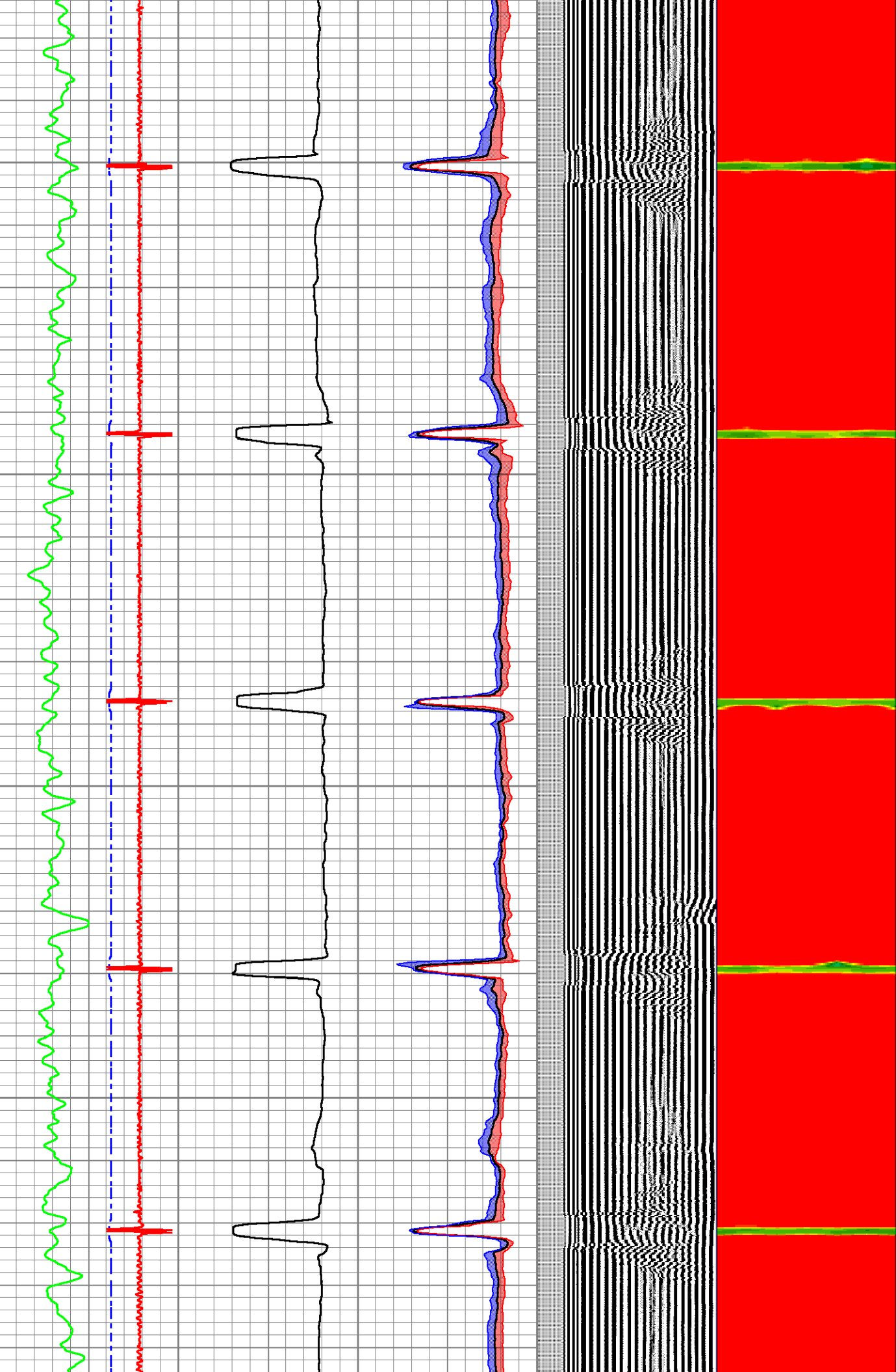


650

700

750

800



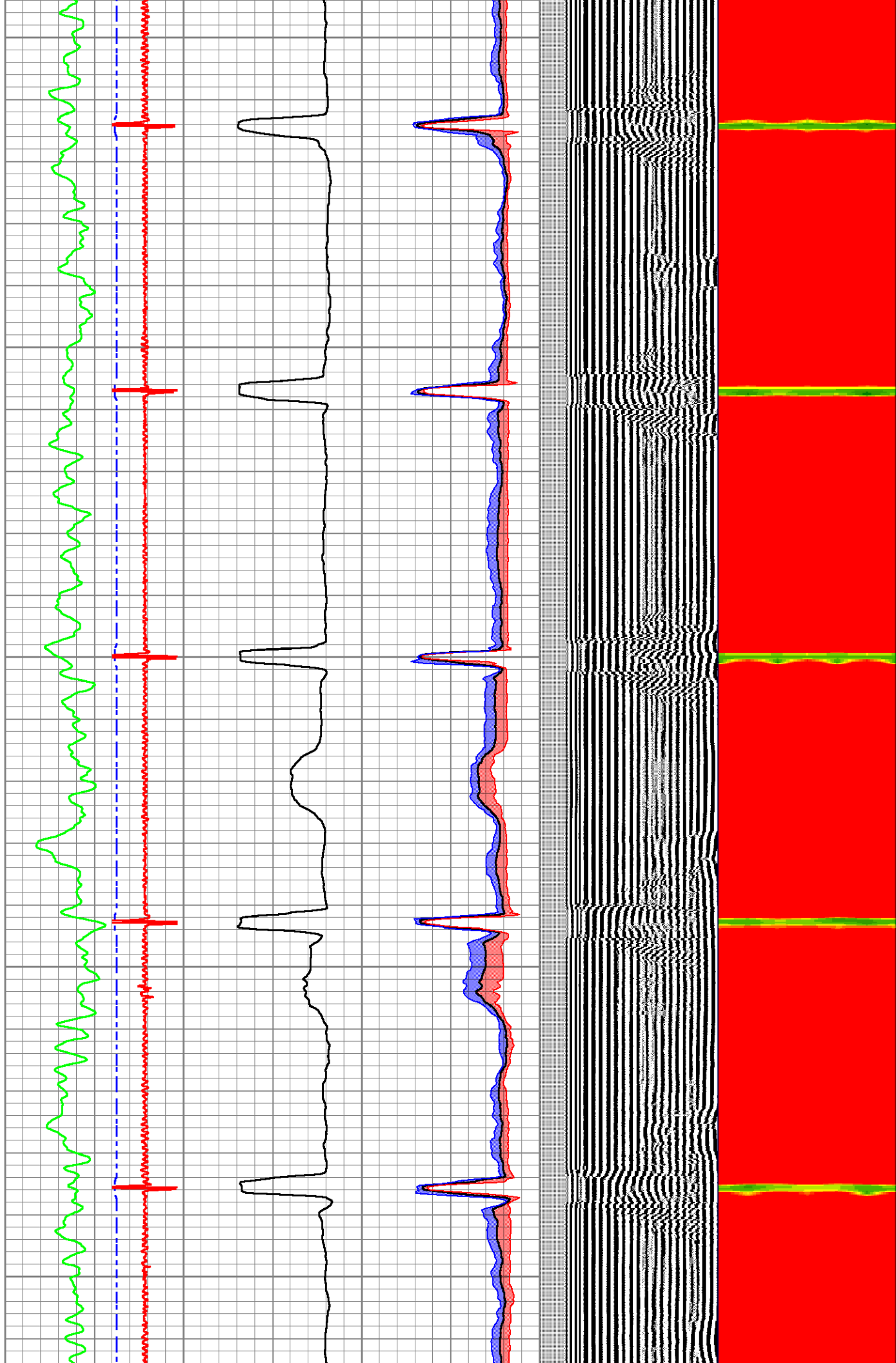
850

900

950

1000

1050

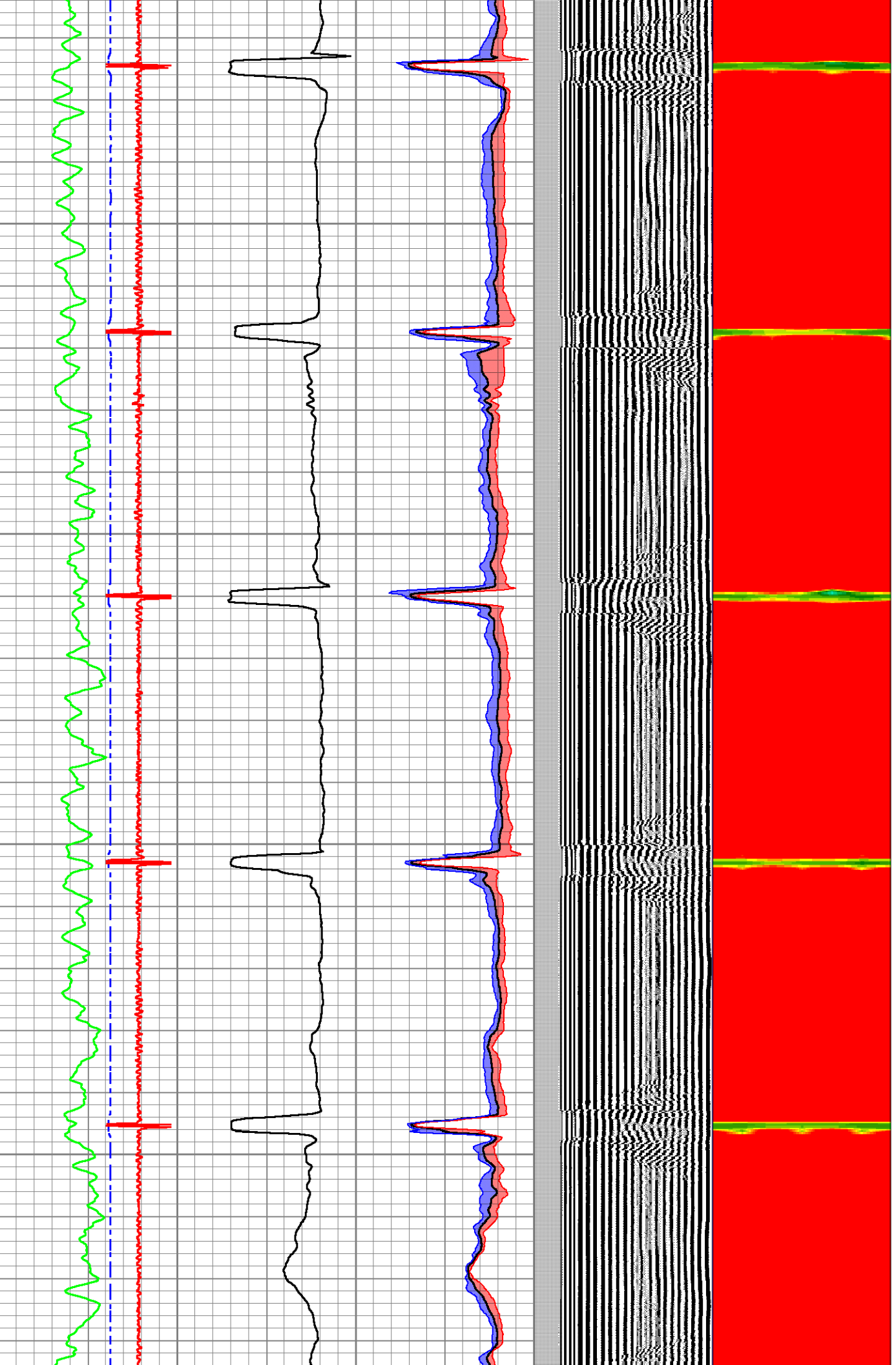


1100

1150

1200

1250



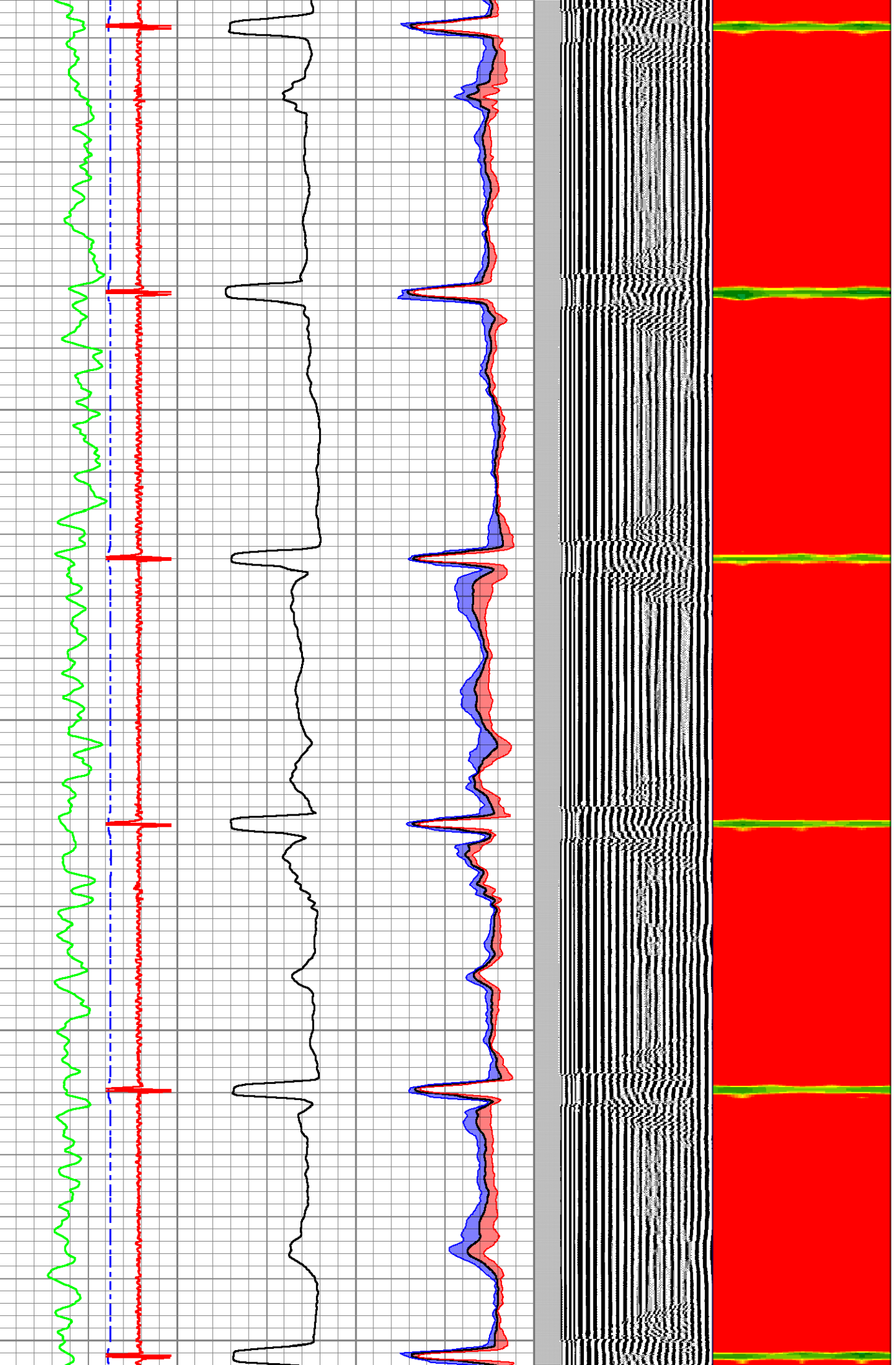
1300

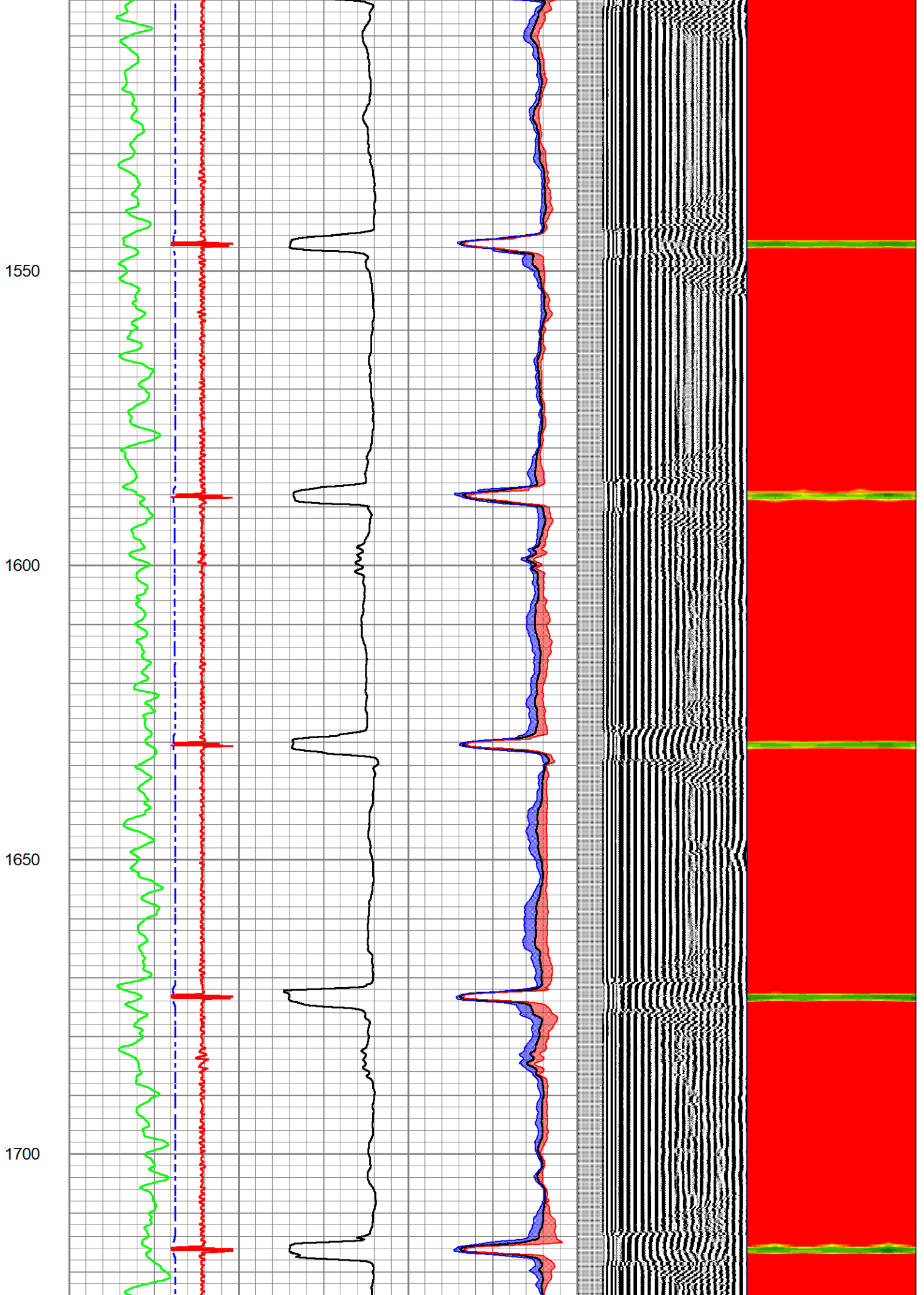
1350

1400

1450

1500



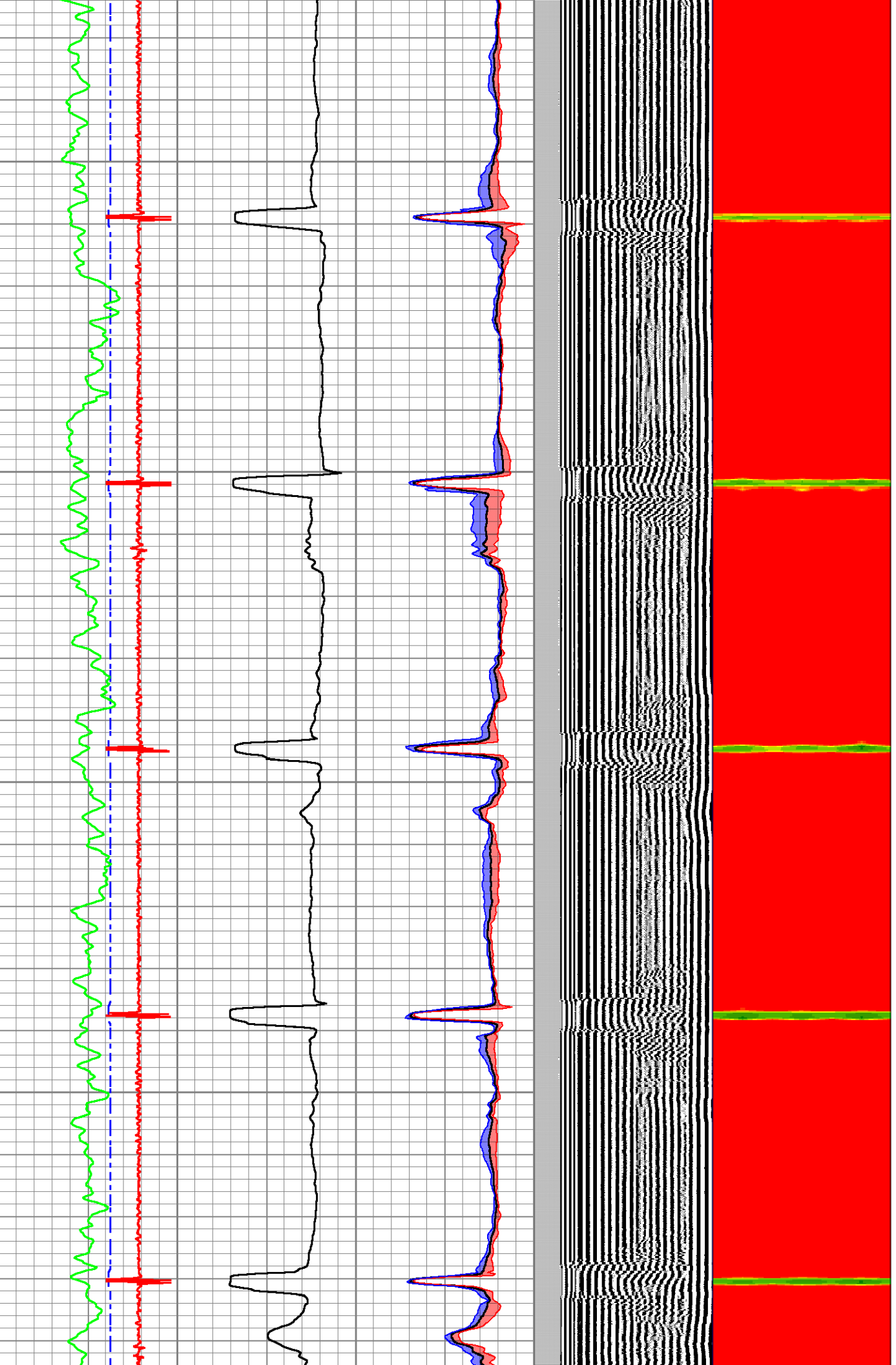


1750

1800

1850

1900



1950

2000

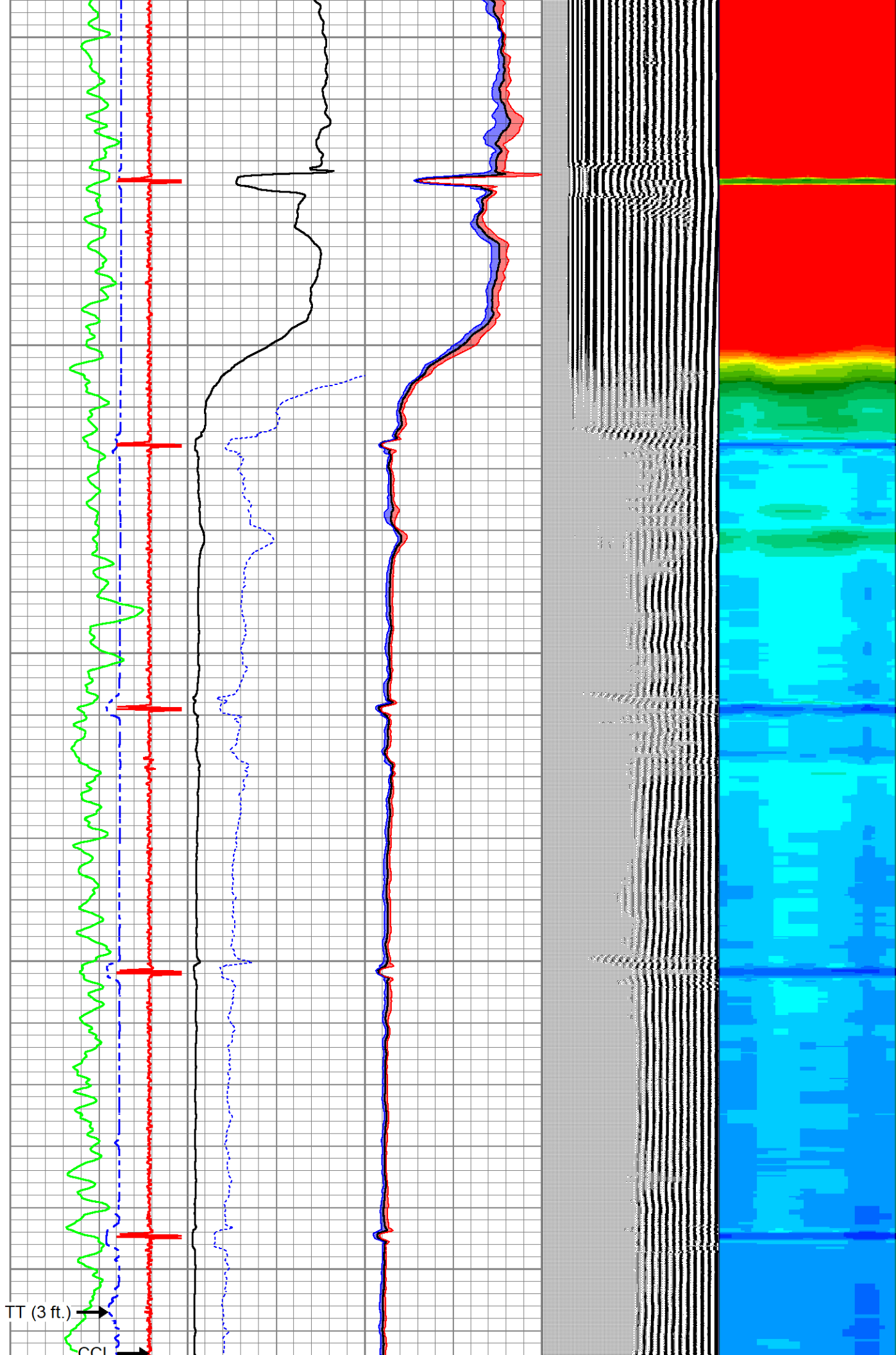
2050

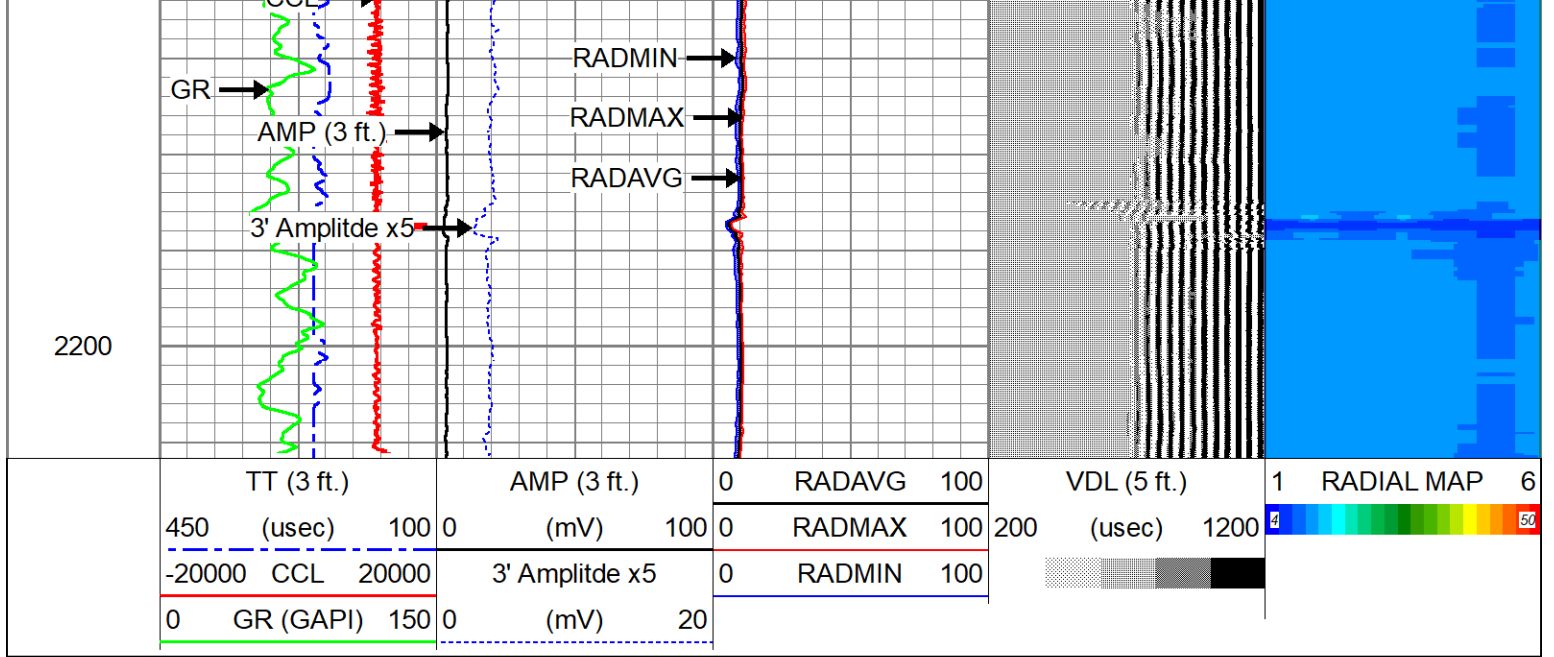
2100

2150

TT (3 ft.)

3





**Company** CHEVRON  
**Well** WALCKER USX AB 01-14P  
**Field** WATTENBERG 90750  
**County** WELD  
**State** CO. **Country** U.S.A.