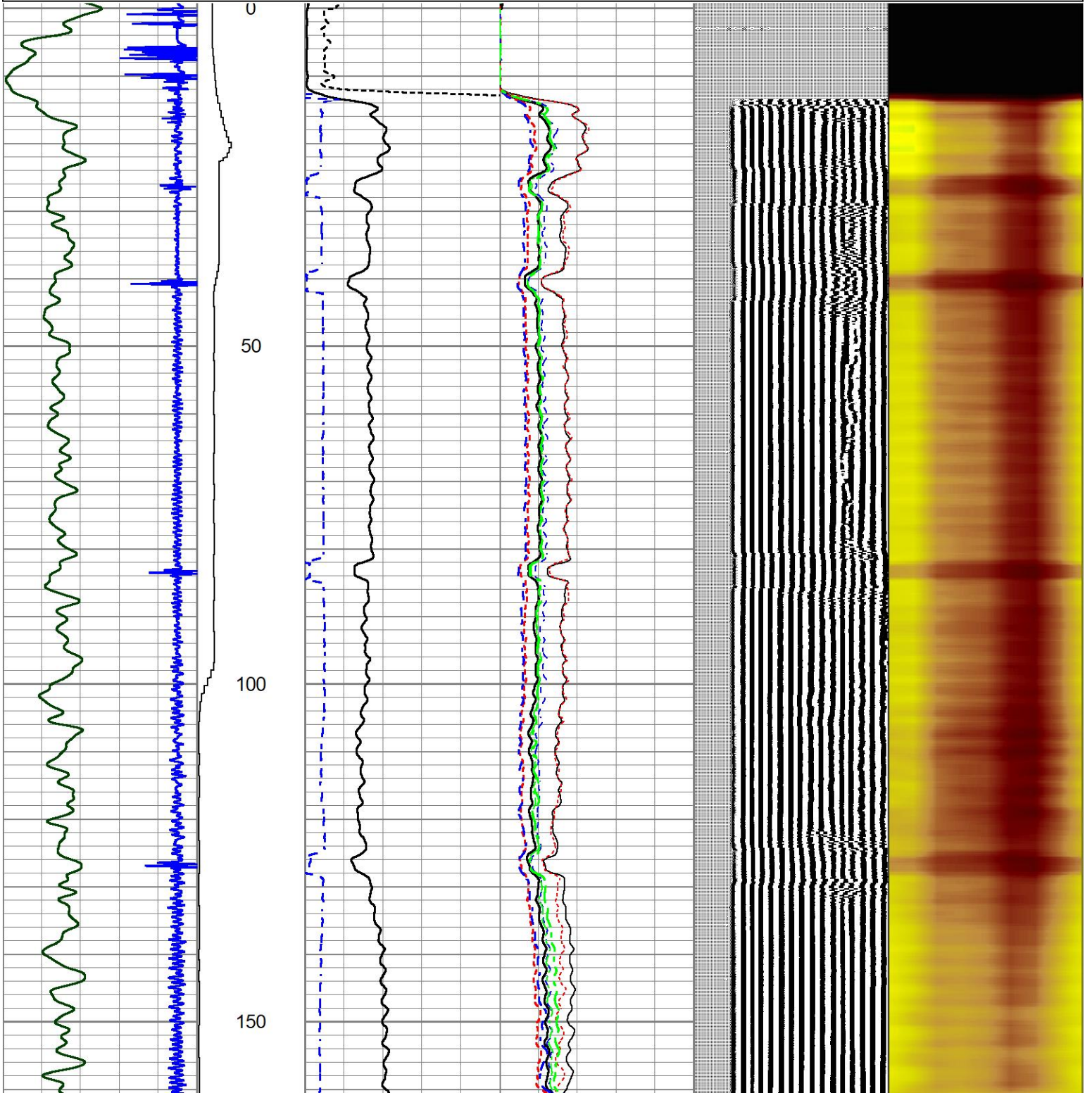
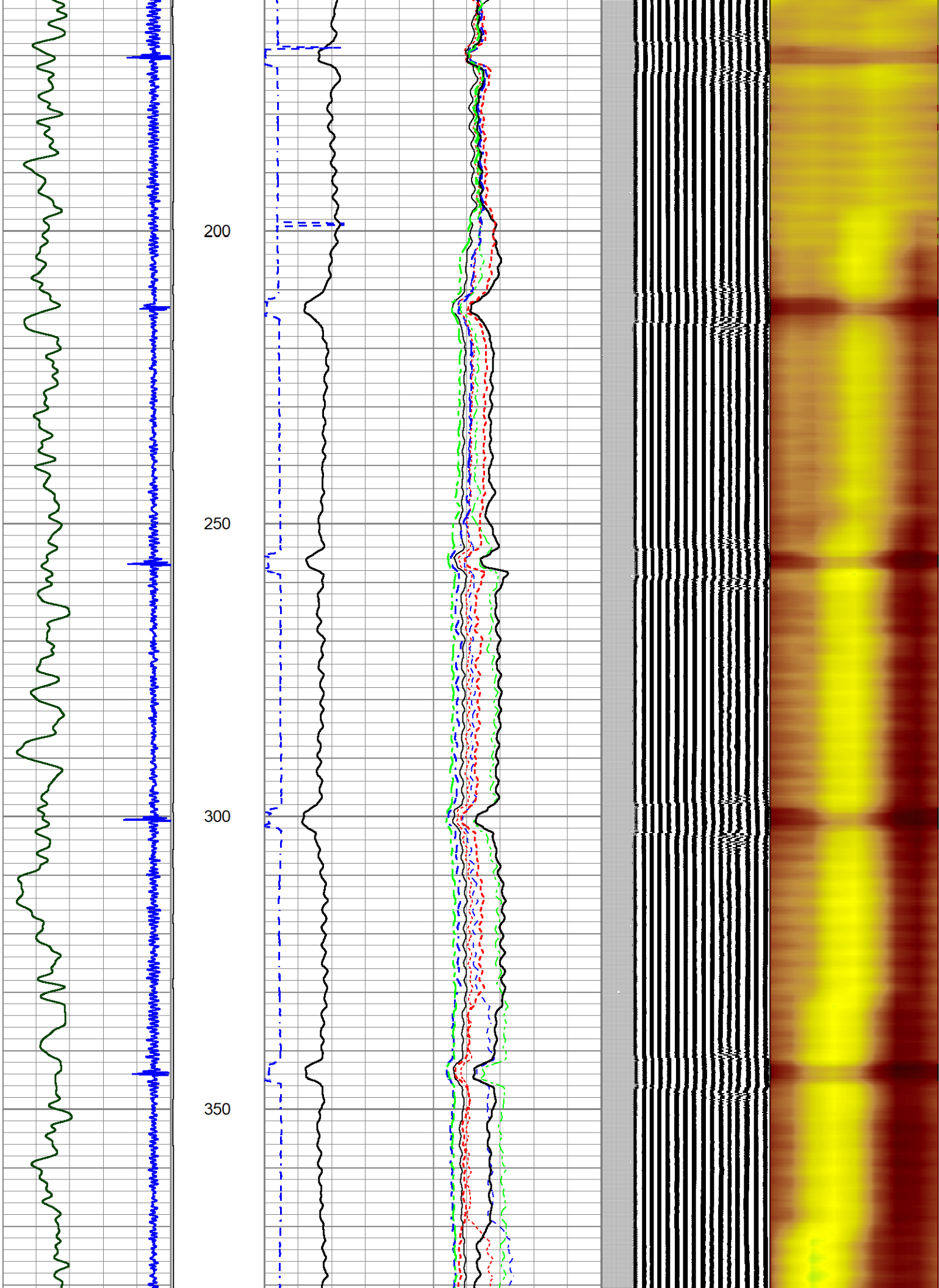
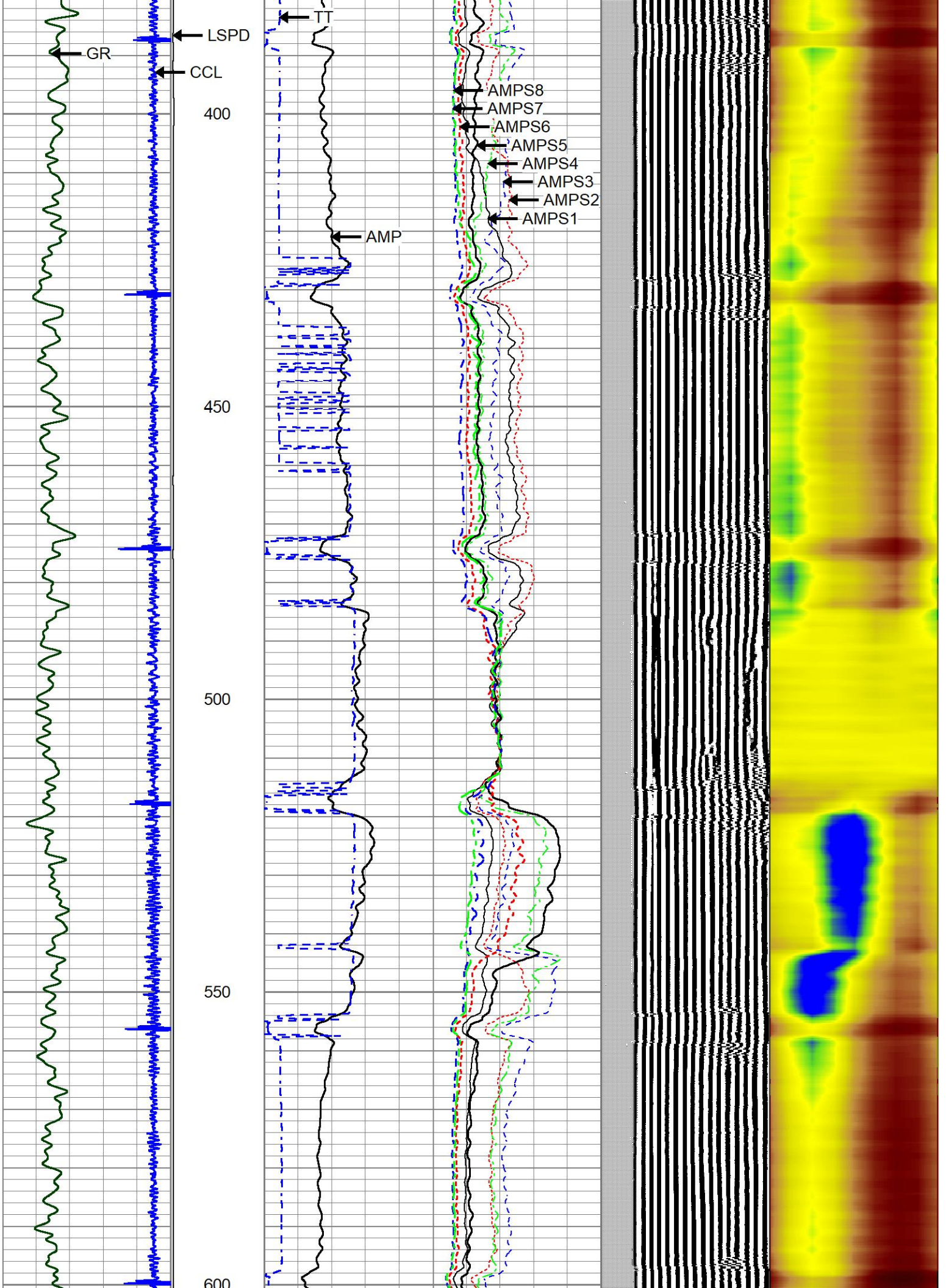


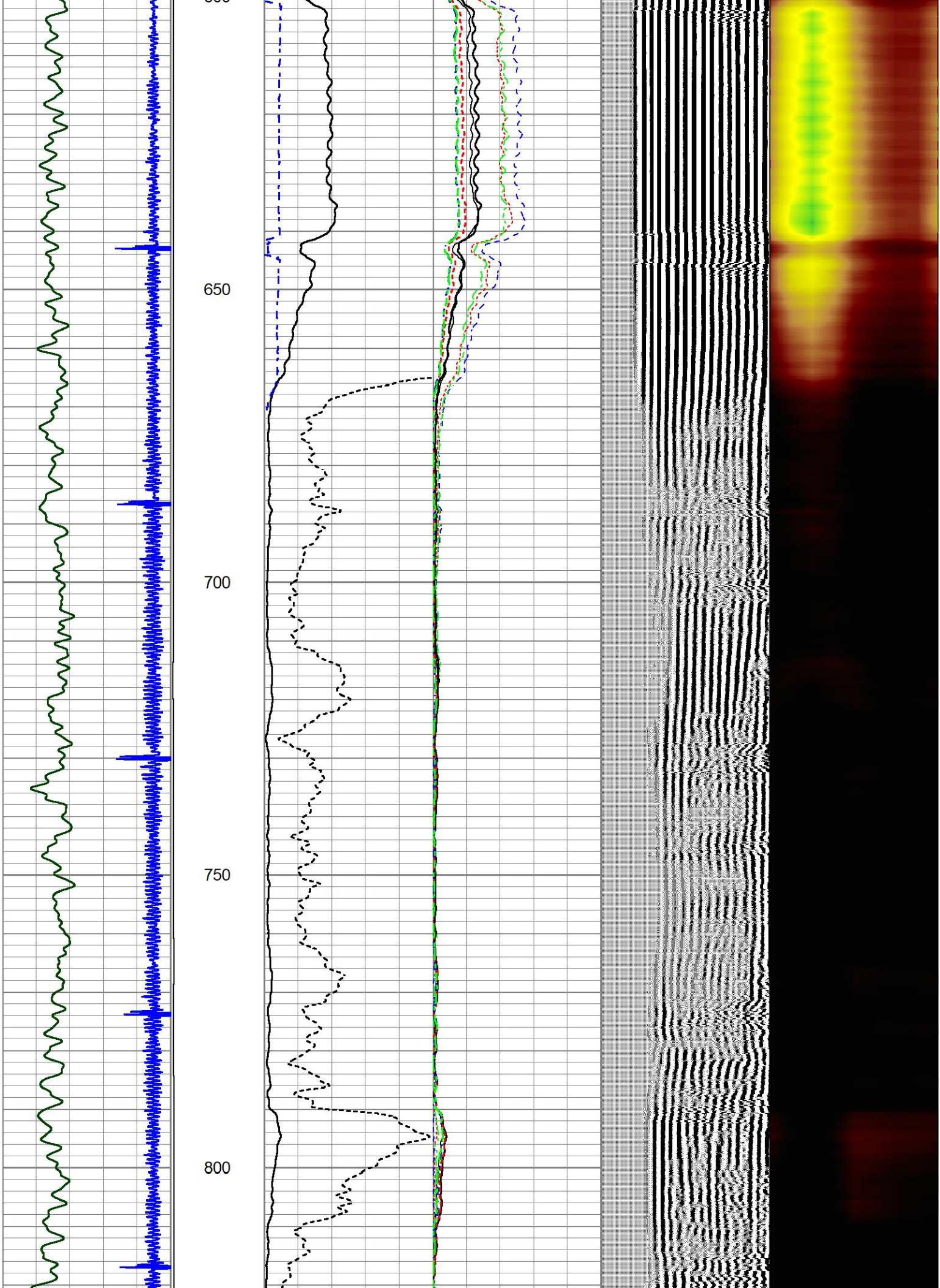
Database File 6-3-24.db
 Dataset Pathname pass15
 Presentation Format zionrbl
 Dataset Creation Mon Jun 03 08:19:06 2024
 Charted by Depth in Feet scaled 1:240

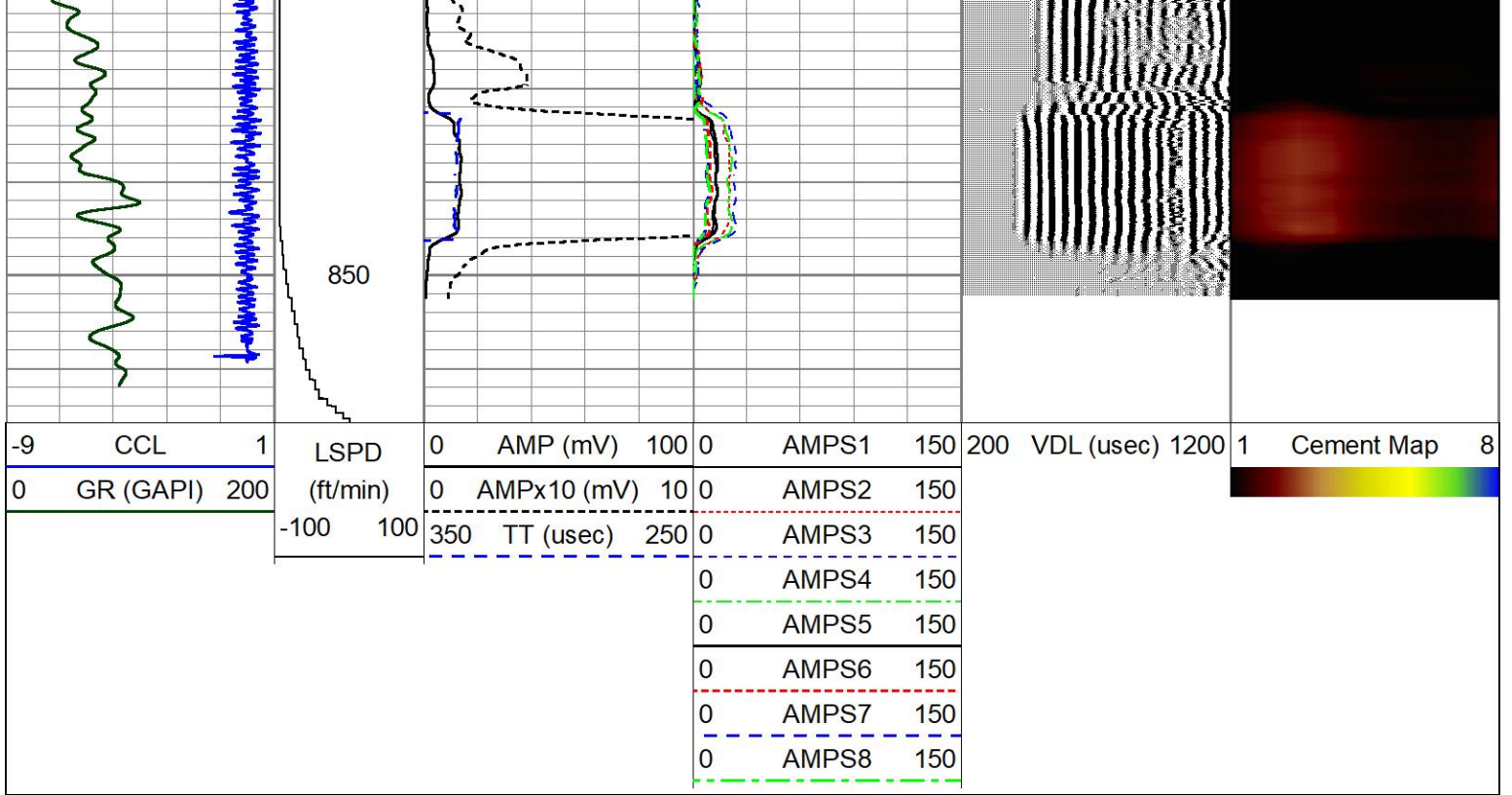
-9	CCL	1	LSPD	0	AMP (mV)	100	0	AMPS1	150	200	VDL (usec)	1200	1	Cement Map	8
0	GR (GAPI)	200	(ft/min)	0	AMPx10 (mV)	10	0	AMPS2	150						
			-100	100	350	TT (usec)	250	0	AMPS3	150					
								0	AMPS4	150					
								0	AMPS5	150					
								0	AMPS6	150					
								0	AMPS7	150					
								0	AMPS8	150					





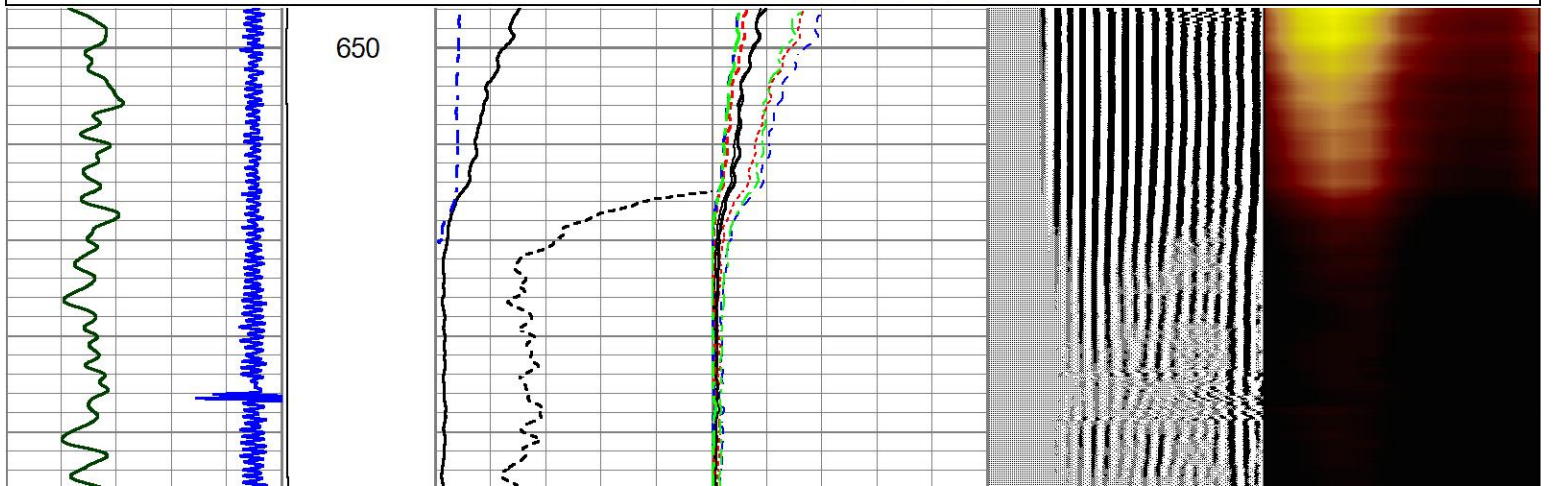
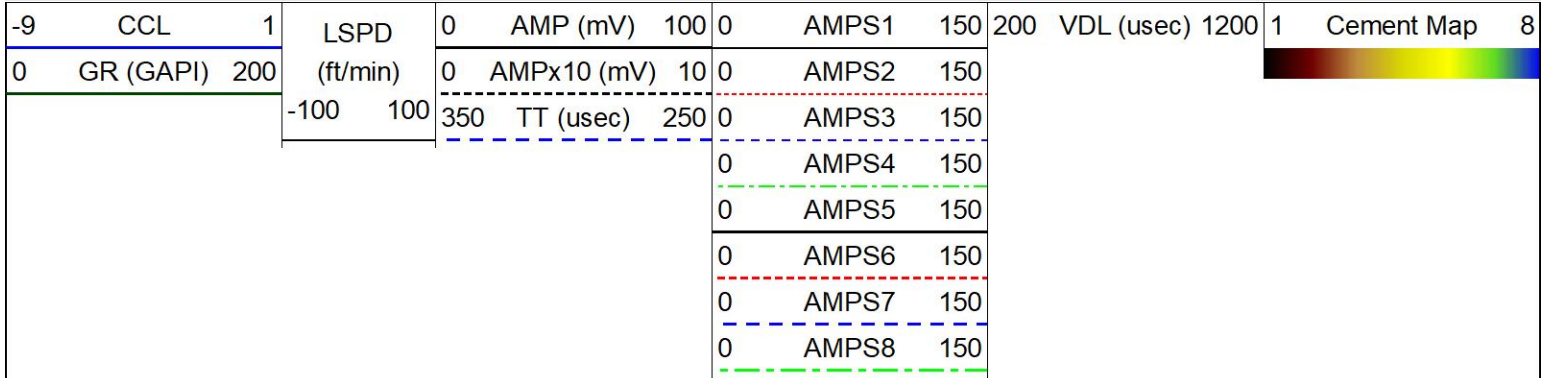


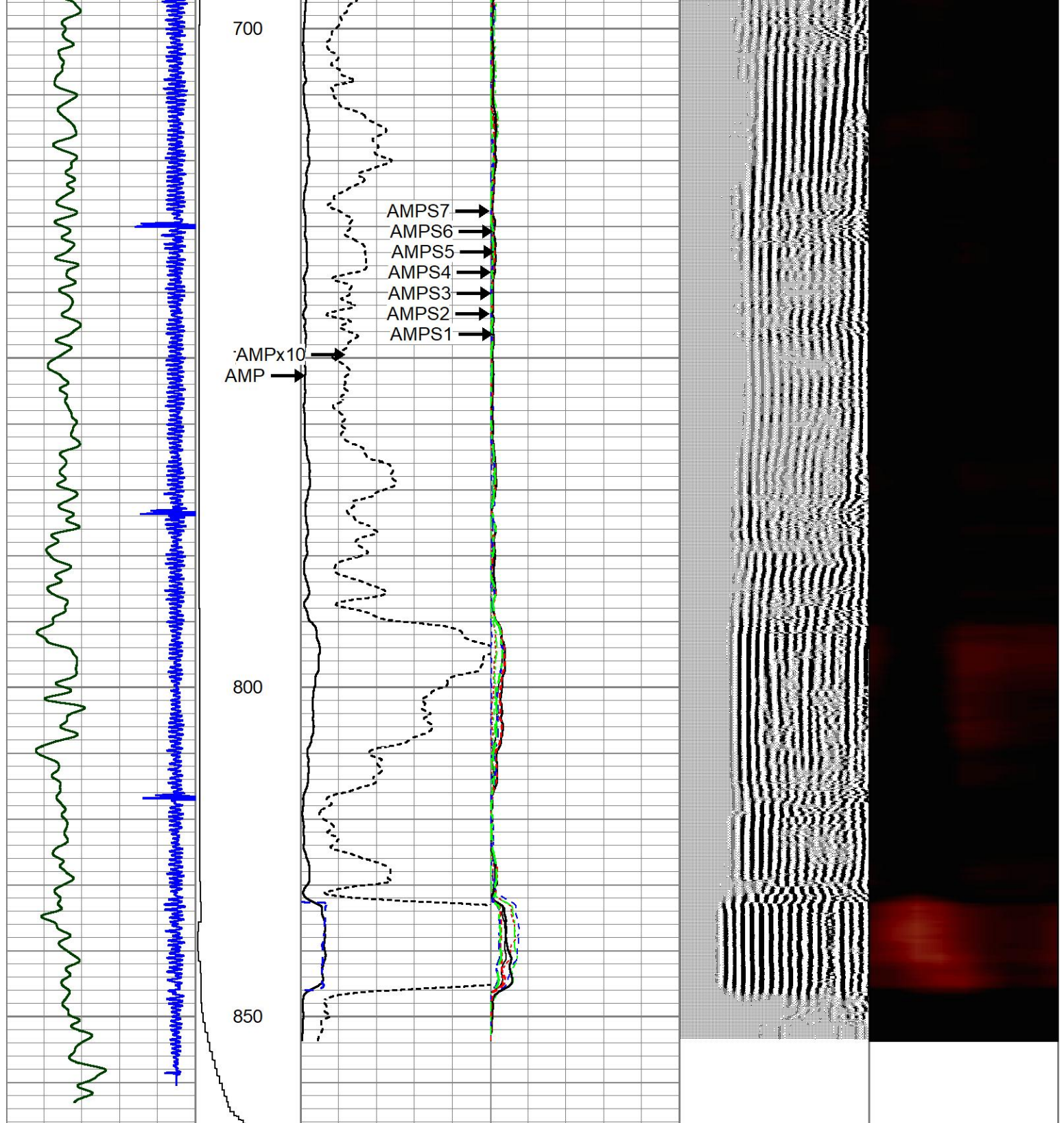




REPEAT PASS

Database File 6-3-24.db
 Dataset Pathname pass13
 Presentation Format zionrbl
 Dataset Creation Mon Jun 03 08:14:26 2024
 Charted by Depth in Feet scaled 1:240





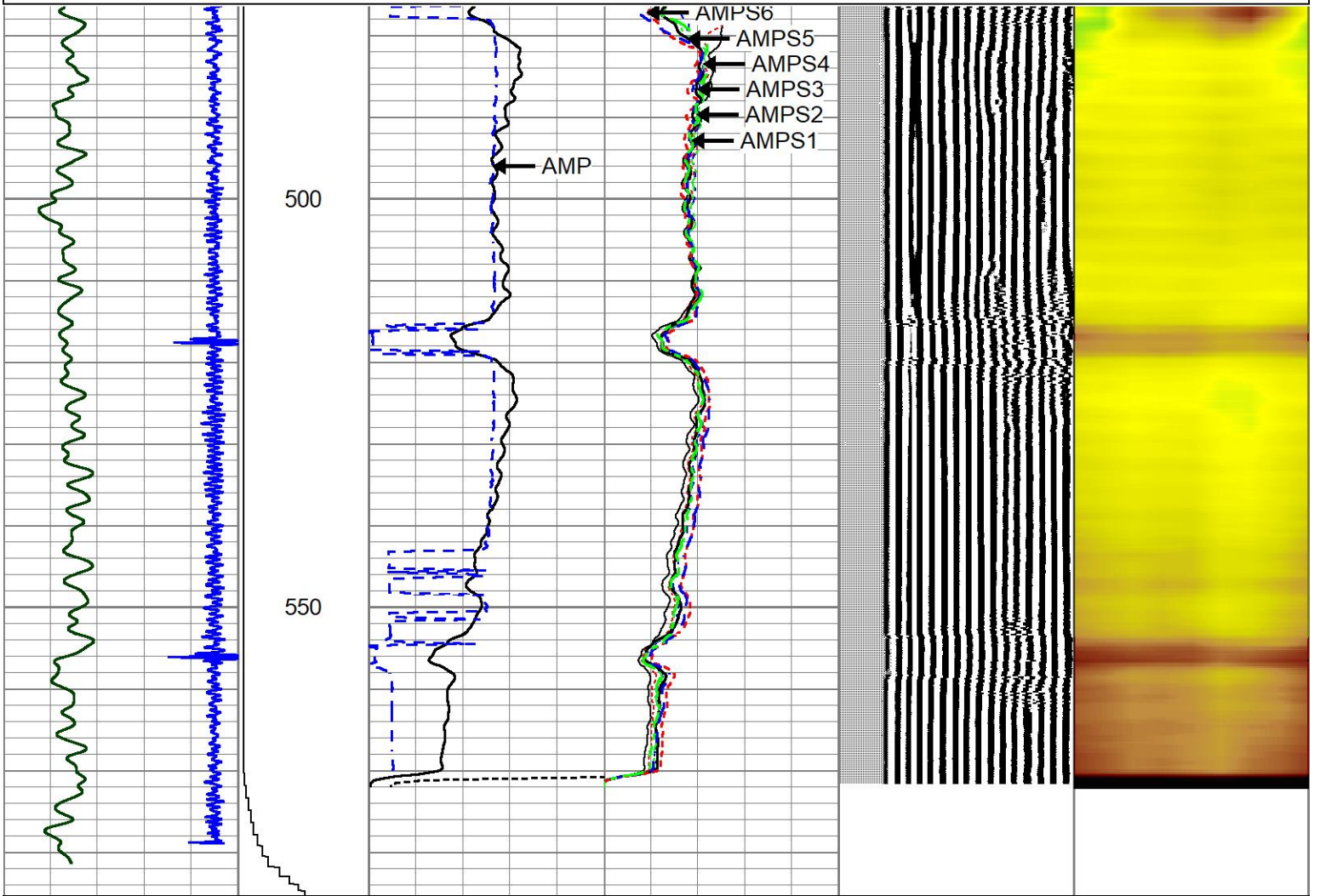
-9	CCL	1	LSPD	0	AMP (mV)	100	0	AMPS1	150	200	VDL (usec)	1200	1	Cement Map	8
0	GR (GAPI)	200	(ft/min)	0	AMPx10 (mV)	10	0	AMPS2	150						
			-100 100	350	TT (usec)	250	0	AMPS3	150						
							0	AMPS4	150						
							0	AMPS5	150						
							0	AMPS6	150						
							0	AMPS7	150						
							0	AMPS8	150						



CALIBRATION PASS

Database File 6-3-24.db
 Dataset Pathname pass11
 Presentation Format zionrbl
 Dataset Creation Mon Jun 03 08:10:22 2024
 Charted by Depth in Feet scaled 1:240

-9	CCL	1	LSPD	0	AMP (mV)	100	0	AMPS1	150	200	VDL (usec)	1200	1	Cement Map	8
0	GR (GAPI)	200	(ft/min)	0	AMPx10 (mV)	10	0	AMPS2	150						
			-100 100	350	TT (usec)	250	0	AMPS3	150						
							0	AMPS4	150						
							0	AMPS5	150						
							0	AMPS6	150						
							0	AMPS7	150						
							0	AMPS8	150						



-9	CCL	1	LSPD	0	AMP (mV)	100	0	AMPS1	150	200	VDL (usec)	1200	1	Cement Map	8
0	GR (GAPI)	200	(ft/min)	0	AMPx10 (mV)	10	0	AMPS2	150						
			-100 100	350	TT (usec)	250	0	AMPS3	150						
							0	AMPS4	150						
							0	AMPS5	150						
							0	AMPS6	150						
							0	AMPS7	150						

Calibration Report

Database File 6-3-24.db
 Dataset Pathname pass15
 Dataset Creation Mon Jun 03 08:19:06 2024

Gamma Ray Calibration Report

Serial Number: GCL004_base
 Tool Model: GCL004
 Performed: (Not Performed)

Calibrator Value: 1.0 GAPI

Background Reading: 0.0 cps
 Calibrator Reading: 1.0 cps

Sensitivity: 1.0000 GAPI/cps

Segmented Cement Bond Log Calibration Report

Serial Number: FW2001-30
 Tool Model: HTRCB-275

Calibration Casing Diameter: 7.000 in
 Calibration Depth: 523.143 ft

Master Calibration, performed Mon Jun 03 08:09:49 2024:

	Raw (v)		Calibrated (mv)		Results	
	Zero	Cal	Zero	Cal	Gain	Offset
3'	0.001	1.142	1.000	62.165	53.601	0.935
CAL	0.001	2.198				
5'	0.001	0.813	1.000	62.165	75.325	0.925
SUM						
S1	0.001	1.161	0.000	62.165	53.586	-0.054
S2	0.001	0.950	0.000	62.165	65.505	-0.050
S3	0.001	0.925	0.000	62.165	67.249	-0.071
S4	0.001	0.962	0.000	62.165	64.685	-0.051
S5	0.001	1.083	0.000	62.165	57.427	-0.046
S6	0.001	1.410	0.000	62.165	44.106	-0.044
S7	0.001	1.726	0.000	62.165	36.036	-0.031
S8	0.001	1.565	0.000	62.165	39.745	-0.048

Internal Reference Calibration, performed Mon Jun 03 07:37:35 2024:

	Raw (v)		Calibrated (v)		Results	
	Zero	Cal	Zero	Cal	Gain	Offset
CAL	0.000	0.000	0.001	2.198	1.000	0.000

Air Zero Calibration, performed Fri Apr 19 14:29:14 2024:

	Raw (v)		Calibrated (v)		Results	
	Zero		Zero			Offset
3'	0.000		0.000			0.000
5'	0.000		0.000			0.000
SUM						

S1	0.000	0.000	0.000
S2	0.000	0.000	0.000
S3	0.000	0.000	0.000
S4	0.000	0.000	0.000
S5	0.000	0.000	0.000
S6	0.000	0.000	0.000
S7	0.000	0.000	0.000
S8	0.000	0.000	0.000

Inclinometer Calibration Report

Performed:	(Not Performed)				
	Low Read.	High Read.	Low Ref.	High Ref.	
X Accelerometer	0.00	1.00	0.00	1.00	gee
Y Accelerometer	0.00	1.00	0.00	1.00	gee
Z Accelerometer	0.00	1.00	0.00	1.00	gee

Sensor	Offset (ft)	Schematic	Description	Length (ft)	O.D. (in)	Weight (lb)
GCT_FMWR	24.36		CENT-BC275-0000 Probe 2.75" Bowspring Centralizer	2.83	2.75	24.00
mSec_Count	24.36					
RBT_Status	24.36					
Error_Ct	24.36					
RBT_HV	22.09					
RBT_ACCZ	14.69		RBT8-HTRCB-275 (FW2001-30) Probe 2.75" High Temperature RADII 8 Sector Bond Tool w/ external temperature	11.08	2.75	
RBT_ACCY	14.69					
RBT_ACCX	14.69					
WVFSYNC	14.69					
WVFS8	14.69					
WVFS7	14.69					
WVFS6	14.69					
WVFS5	14.69					
WVFS4	14.69					
WVFS3	14.69					
WVFS2	14.69					
WVFS1	14.69					
WVFCAL	14.69					
WVE3FT	14.69					

WVF5FT	13.69		7.28	2.75	92.00				
GCT_HV	7.61								
CCL\$2	6.31								
CCL\$1	6.31								
GCT_Temp	5.43								
GCT_IntTemp	2.00								
GR	1.75								
						0.33	1.38	1.00	
Dataset: 6-3-24.db: field/well/run1/pass15 Total length: 24.36 ft Total weight: 141.00 lb O.D.: 2.75 in									

Log Variables

DatabaseC:\ProgramData\Warrior\Data\6-3-24.db
Dataset field/well/run1/pass15/_vars_

Top - Bottom

BOREID in 7.875	BOTTEMP degF 100	CASEOD in 7	CASETHCK in 0	CASEWGHT lb/ft 26	MAXAMPL mV 62.2	MINAMPL mV 1	MINATTN db/ft 0.8
PERFS No	PPT usec 0	SRFTEMP degF 0	TDEPTH ft 0				

Variable Description

BOREID : Borehole I.D.
BOTTEMP : Bottom Hole Temperature
CASEOD : Casing O.D.
CASETHCK : Casing Thickness

CASEWGHT : Casing Weight
MAXAMPL : Maximum Amplitude
MINAMPL : Minimum Amplitude
MINATTN : Minimum Attenuation

PERFS : Perforation Flag
PPT : Predicted Pipe Time
SRFTEMP : Surface Temperature
TDEPTH : Total Depth