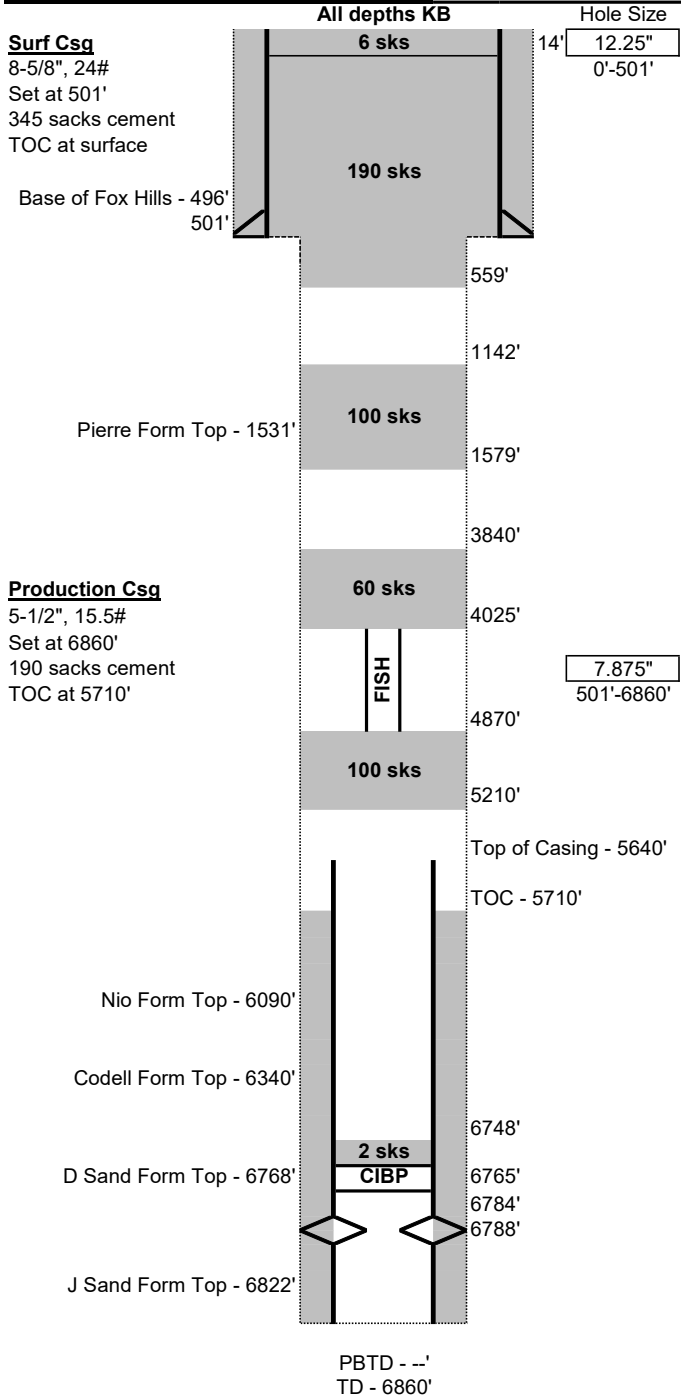


## Final As-Plugged Wellbore Schematic

Well Name: BJC 33-13X  
 Location: 622' FSL, 604' FWL, SWSW Sec 33, T8N, R59W  
 County: Weld  
 API #: 05-123-20843  
 Co-ordinates: 40.612926 / -103.990129  
 Elevations: GROUND: 4989'  
                   KB: 5000'  
 Depths (KB): PBTD: --  
                   TD: 6860'

Date Prepared: 4/27/2024  
 Last Updated: 8/11/2024  
 Spud Date: 8/11/2001  
 Completion Start Date: 8/16/2001  
 Last Workover Date: 8/23/2001  
 Prepared by: Jake Van Bramer  
 Updated by: --



**Surface Casing:**  
 Drilled 12-1/4" surface hole to 501'  
 Set 8-5/8", 24# casing at 501'  
 Cemented with 345 sks  
 TOC at surface

**Production Casing:**  
 Drilled 7-7/8" production hole to 6,860'  
 Set 5-1/2", 15.5# casing at 6,860'  
 Cemented with 190 sks  
 TOC at 5,710' (CBL)  
 Casing cut and pulled at 5,640'

**Open Hole:**  
 7-7/8" Open Hole from 501'-5,640', expected to be washed out

**Tubing:**  
 None

**Rods:**  
 None

**Perforations:**  
 Perfs: 16 - 0.375" holes from 6,784'-6,788'

**P&A Plugs:**

- 2 sks on top of CIBP from 6,157'-6,175' (existing)
- 100 sks Class G (1.15 cuft/sk) at 4870'-5210' (new)
- 60 sks Class G (1.15 cuft/sk) from 3,840'-4,025' (new)
- 100 sks Class G (1.15 cuft/sk) from 1,142'-1,579' (new, tagged)
- 190 sks Class G (1.15 cuft/sk) from 14'-559' (new, tagged)
- 6 sks top off from 14' to surface during cut & cap (new)

**Additional Notes:**  
 CIBP set at 6,765'  
 P&A workstring stuck at 4870', pumped 100 sks cement there and then free pointed, cut tubing at 4025'. FIH: 4025'-4870'

**Initial Potential Test:**  
 (8/27/2001) 6 hour test  
 7 bbl oil, 200 mcf gas, 21 bbl water  
 Csg P: 600, Tbg P: 160

**Formation Tops:**

Base of the Fox Hills	496'
Pierre	1531'
Niobrara	6090'
Codell	6340'
D Sand	6768'
J Sand	6822'