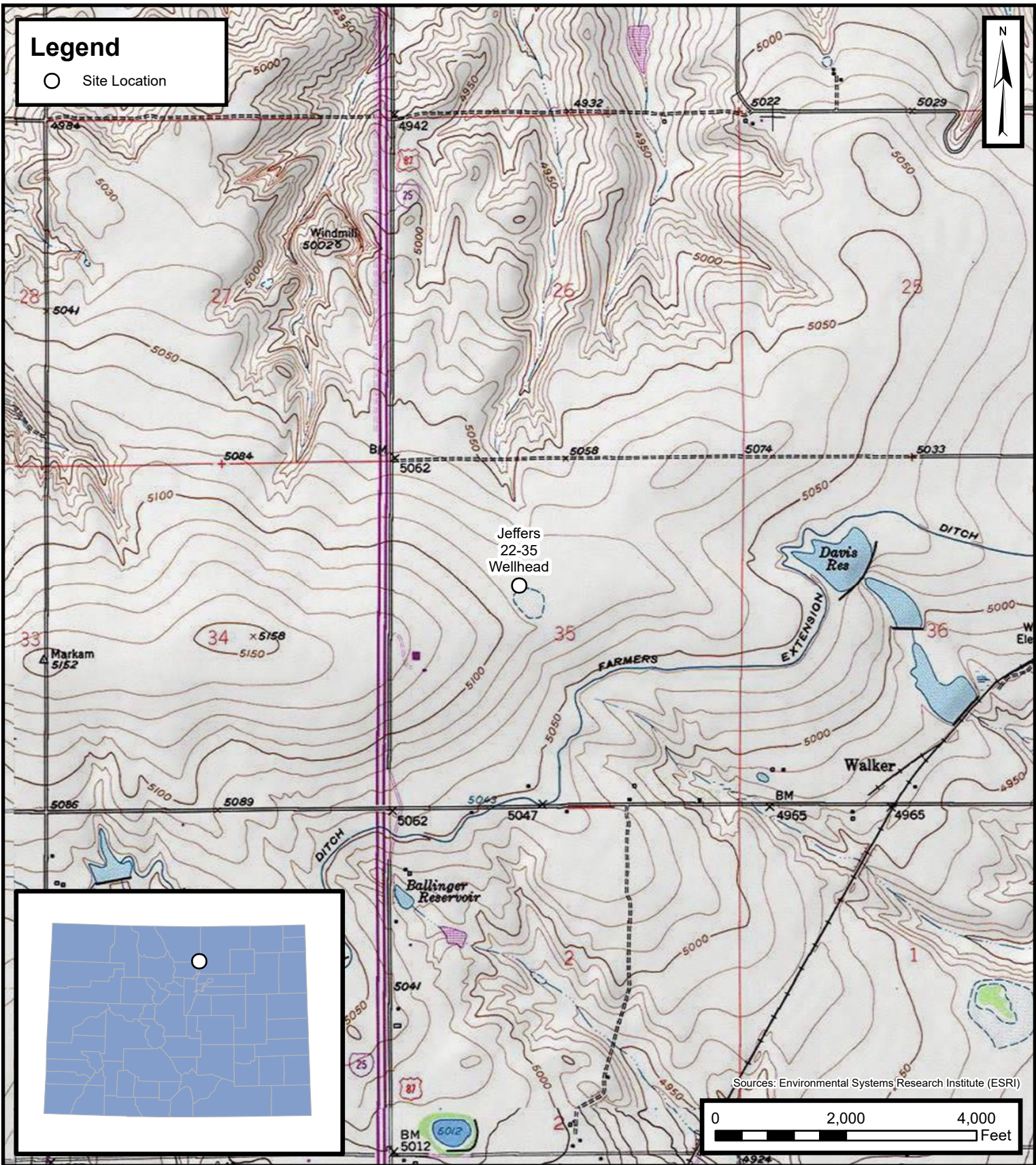
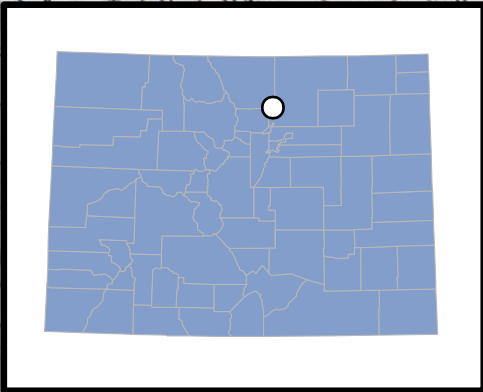


Legend

○ Site Location



Default Folder: C:\Users\Margan TallOneDrive - ENSOLUM LLC\Ensolum GIS\0 - Projects\Kerr-McGee Oil & Gas Onshore, LP\09A1417909 - Jeffers 22-35 Wellhead



Environmental, Engineering and Hydrogeologic Consultants

Site Location Map

Jeffers 22-35 Wellhead
Kerr-McGee Oil & Gas Onshore, LP
SENW SEC 35-T4N-R68W
Weld County, CO

Project Number: 09A1417909

FIGURE

1