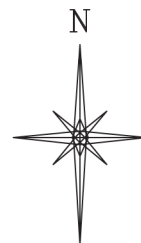


FOUND 2014
ALUM CAP
"PLS 22097"

R. 93 W.

FOUND
0.9'x0.9'
STONE



GRID NORTH
SCALE' 1" = 1000'
500' 0 1000'

T. 9 S.

LARAMIE FED
0993-21-18W
UNGRADED ELEVATION:
7460.8'

S87°57'02"E 5209.33'

(1302.33')

(1302.33')

301'

13'

(1360.79')

(1360.79')

(1360.79')

(1360.79')

(1360.79')

(1360.79')

(1360.79')

(1360.79')

(1360.79')

(1360.79')

(1360.79')

(1360.79')

(1360.79')

(1360.79')

(1360.79')

(1360.79')

(1360.79')

(1360.79')

(1360.79')

(1360.79')

(1360.79')

(1360.79')

(1360.79')

(1360.79')

(1360.79')

(1360.79')

(1360.79')

(1360.79')

(1360.79')

(1360.79')

(1360.79')

(1360.79')

(1360.79')

29

FOUND 2011
ALUM CAP
"LS 12180"

SHL
LATITUDE (NAD 83)
NORTH 39.254555 DEG.
LONGITUDE (NAD 83)
WEST 107.783849 DEG
NORTHING (NAD 83)
1525734.45
EASTING (NAD 83)
2353354.03

BASIS OF BEARING/DATUM

SPCS CO CENTRAL ZONE NAD 27 BASED
ON GPS STATIC OBSERVATIONS AND
OPUS SOLUTION ON DRG CONTROL
POINT "CP 16-9-93" HAVING A
POSITION OF:
NAD83(2011)
LAT 39° 16' 16.64" NORTH
LONG 107° 46' 11.24" WEST
NAVD88 ELEVATION: 7245.29

THE NORTH LINE OF SECTION 29,
MONUMENTED AS SHOWN AND
BEARING S87°57'02"E.

NOTES

- 1. GPS OPERATOR T. SHERRILL OBSERVED A PDOF OF 1.2.
- 2. ALL GPS OBSERVATIONS ARE IN COMPLIANCE WITH COGCC RULE No.215.
- 3. EXISTING IMPROVEMENTS WITHIN 2000' OF LOCATION. SEE LOC. DRAWING.
- 4. SURROUNDING SURFACE USE IS NATIVE BRUSH, NON CROP RANGELAND.

LEGEND

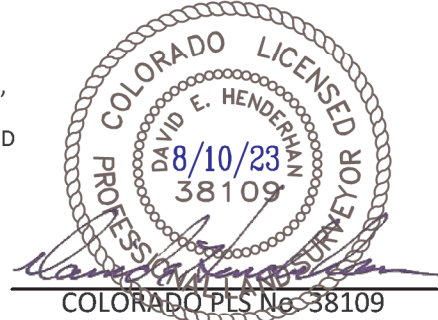
- ◆ WELL LOCATION
- FOUND MONUMENT

SURVEYOR'S STATEMENT

I, DAVID E. HENDERHAN, AN EMPLOYEE AND AGENT ON BEHALF OF D.R. GRIFFIN & ASSOCIATES, INC. STATE THE PLAT HEREON IS A CORRECT REPRESENTATION OF A SURVEY MADE UNDER MY SUPERVISION ON THE 24th DAY OF APRIL, 2023 OF THE SHOWN LARAMIE FED 0993-21-18W AND THAT THE LOCATION HAS BEEN STAKED ON THE GROUND AS SHOWN ON THIS PLAT.

Notice: In accordance with Colorado State Law, any legal action based upon any defect in this survey plat must commence within three (3) years after first discovery of such defect. In no event, may any action based upon any defect in this survey plat be commenced more than ten (10) years from the date of certification shown hereon.

LARAMIE 0993-29-01



**PLAT OF DRILLING LOCATION IN
NENE, SECTION 29, FOR
LARAMIE ENERGY, LLC**

**301' F/NL, & 13' F/EL, SECTION 29,
T. 9 S., R. 93 W., 6TH P.M.,
MESA COUNTY, COLORADO**

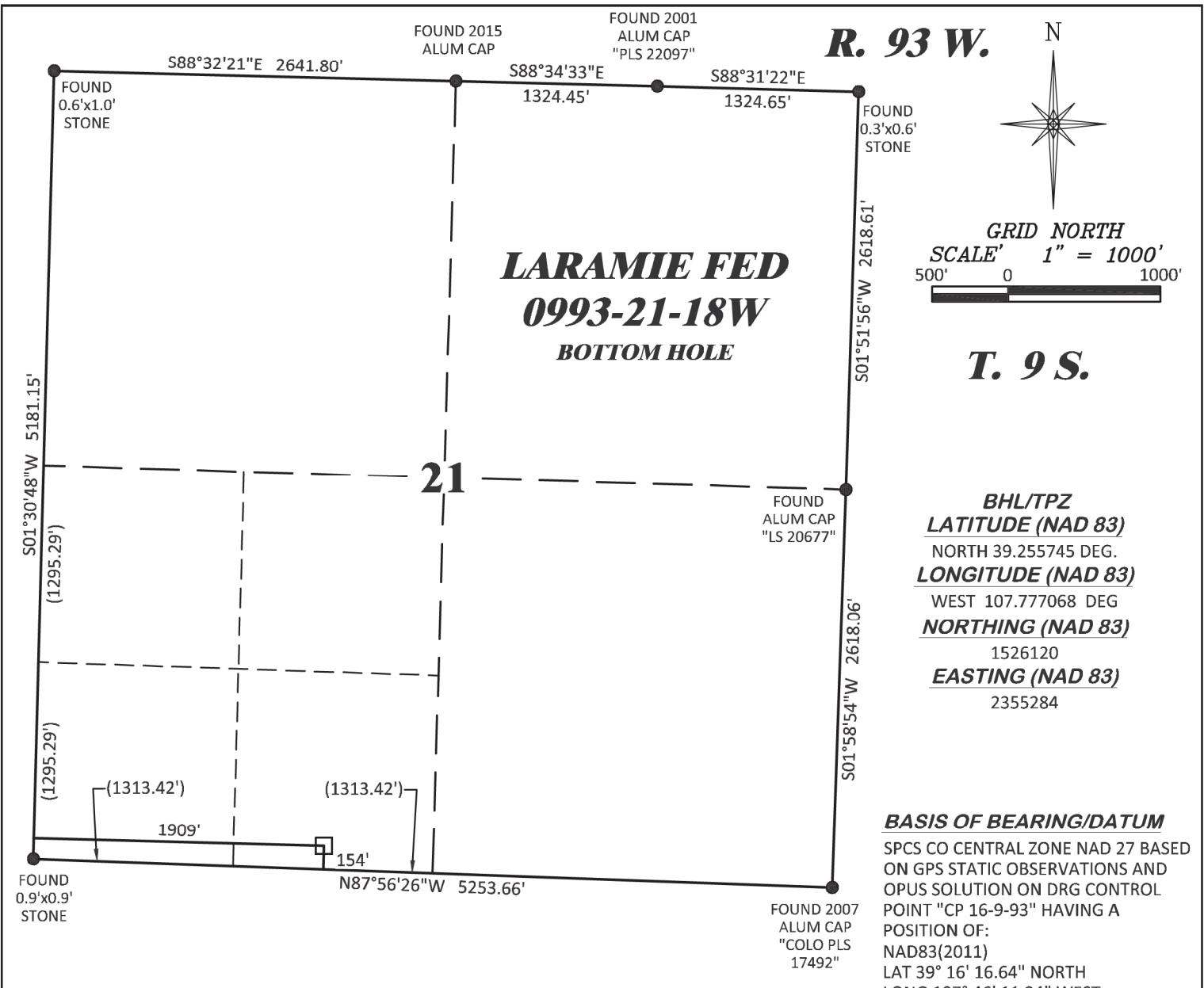
DRAWN: 8/10/2023 - DEH

SCALE: 1" = 1000'

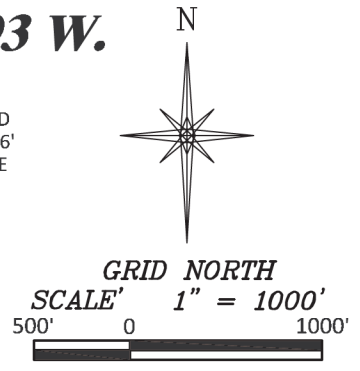
REVISED: N/A

DRG JOB No. 22334

A16-21-18W



LARAMIE FED
0993-21-18W
BOTTOM HOLE



T. 9 S.

BHL/TPZ
LATITUDE (NAD 83)
 NORTH 39.255745 DEG.
LONGITUDE (NAD 83)
 WEST 107.777068 DEG
NORTHING (NAD 83)
 1526120
EASTING (NAD 83)
 2355284

BASIS OF BEARING/DATUM
 SPCS CO CENTRAL ZONE NAD 27 BASED ON GPS STATIC OBSERVATIONS AND OPUS SOLUTION ON DRG CONTROL POINT "CP 16-9-93" HAVING A POSITION OF:
 NAD83(2011)
 LAT 39° 16' 16.64" NORTH
 LONG 107° 46' 11.24" WEST
 NAVD88 ELEVATION: 7245.29

LEGEND

- APPROX. BHL/TPZ
- FOUND MONUMENT

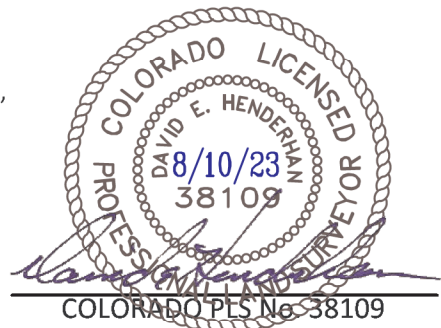
THE WEST LINE OF SECTION 21, MONUMENTED AS SHOWN AND BEARING S01°30'48"W.

SURVEYOR'S STATEMENT

I, DAVID E. HENDERHAN, AN EMPLOYEE AND AGENT ON BEHALF OF D.R. GRIFFIN & ASSOCIATES, INC. STATE THE PLAT HEREON IS A CORRECT REPRESENTATION OF A SURVEY MADE UNDER MY SUPERVISION ON THE 24th DAY OF APRIL, 2023 OF THE SHOWN LARAMIE FED 0993-21-18W BOTTOM HOLE.

Notice: In accordance with Colorado State Law, any legal action based upon any defect in this survey plat must commence within three (3) years after first discovery of such defect. In no event, may any action based upon any defect in this survey plat be commenced more than ten (10) years from the date of certification shown hereon.

LARAMIE 0993-29-01



<p>DRG RIFFIN & ASSOCIATES, INC. (307) 362-5028 1414 ELK ST., ROCK SPRINGS, WY 82901</p>		<p>PLAT OF BOTTOM HOLE LOCATION IN SESW, SECTION 21, FOR LARAMIE ENERGY, LLC</p>
<p>DRAWN: 8/10/2023 - DEH</p>	<p>SCALE: 1" = 1000'</p>	
<p>REVISED: N/A</p>	<p>DRG JOB No. 22334</p>	
	<p>A16-21-18W BHL</p>	