

Project: Mesa County, CO
 Site: Laramie 0993-29-01
 Well: Laramie Fed 0993-21-16W
 Wellbore: OH
 Design: Design #1
 Latitude: 39.254615
 Longitude: -107.783931
 Ground Level: 7463.0
 RKB=30' @ 7493.0usft (TBD)

PROJECT DETAILS: Mesa County, CO
 Geodetic System: US State Plane 1983
 Datum: North American Datum 1983
 Ellipsoid: GRS 1980
 Zone: Colorado Central Zone
 System Datum: Mean Sea Level

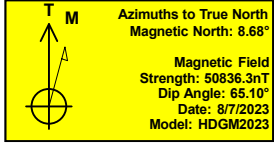
REFERENCE INFORMATION
 Vertical (TVD) Reference: RKB=30' @ 7493.0usft (TBD)
 Section (VS) Reference: Slot - A-12(0.0N, 0.0E)
 Measured Depth Reference: RKB=30' @ 7493.0usft (TBD)
 Calculation Method: Minimum Curvature

FORMATION TOP DETAILS

TVDPath	MDPath	Formation
2740.0	2918.9	Wasatch 'G' Sand
3222.0	3447.0	Fort Union
3902.0	4191.9	Lower Wasatch
4885.0	5049.6	Ohio Creek
5093.0	5496.6	Williams Fork
6116.0	6556.1	TOG
7315.0	7755.1	Cameo
7641.0	8081.1	Rollins

SECTION DETAILS

MD	Inc	Azi	TVD	+N-S	+E-W	Dleg	TFace	VSect	Annotation
0.0	0.00	0.00	0.0	0.0	0.0	0.00	0.00	0.0	
225.0	0.00	0.00	225.0	0.0	0.0	0.00	0.00	0.0	KOP (Build 2.5° / 100)
1188.9	24.10	62.53	1160.8	92.1	177.2	2.50	62.53	199.7	EOB @ 24.10° Inc. / 62.53° Azm
5592.2	24.10	62.53	5180.2	921.5	1772.3	0.00	0.00	1997.6	Drop 2.5° / 100'
6556.1	0.00	0.00	6116.0	1013.7	1949.5	2.50	180.00	2197.3	EOD @ Vertical
8331.1	0.00	0.00	7891.0	1013.7	1949.5	0.00	0.00	2197.3	TD @ 8331.1' MD / 7891.0' TVD

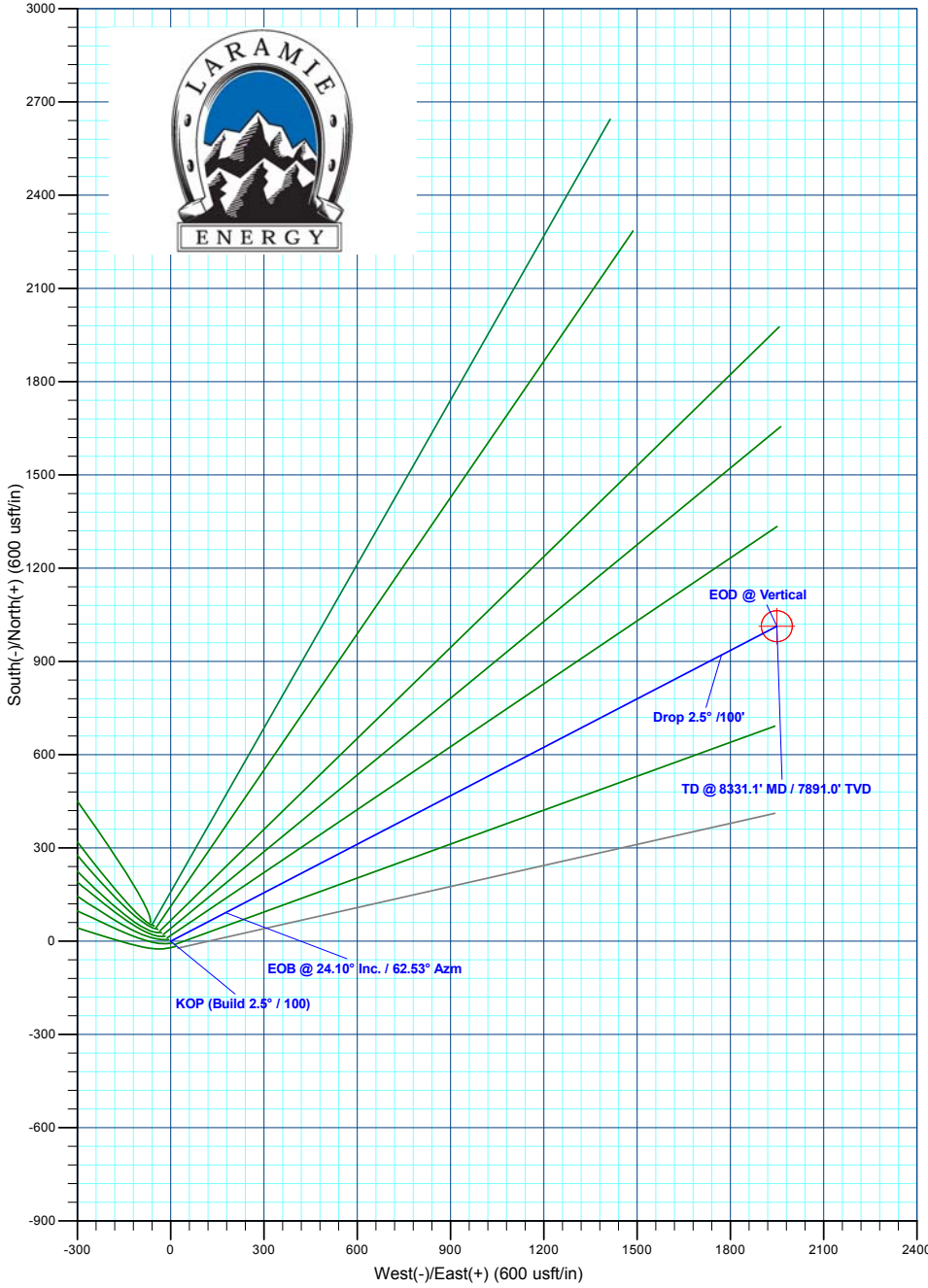
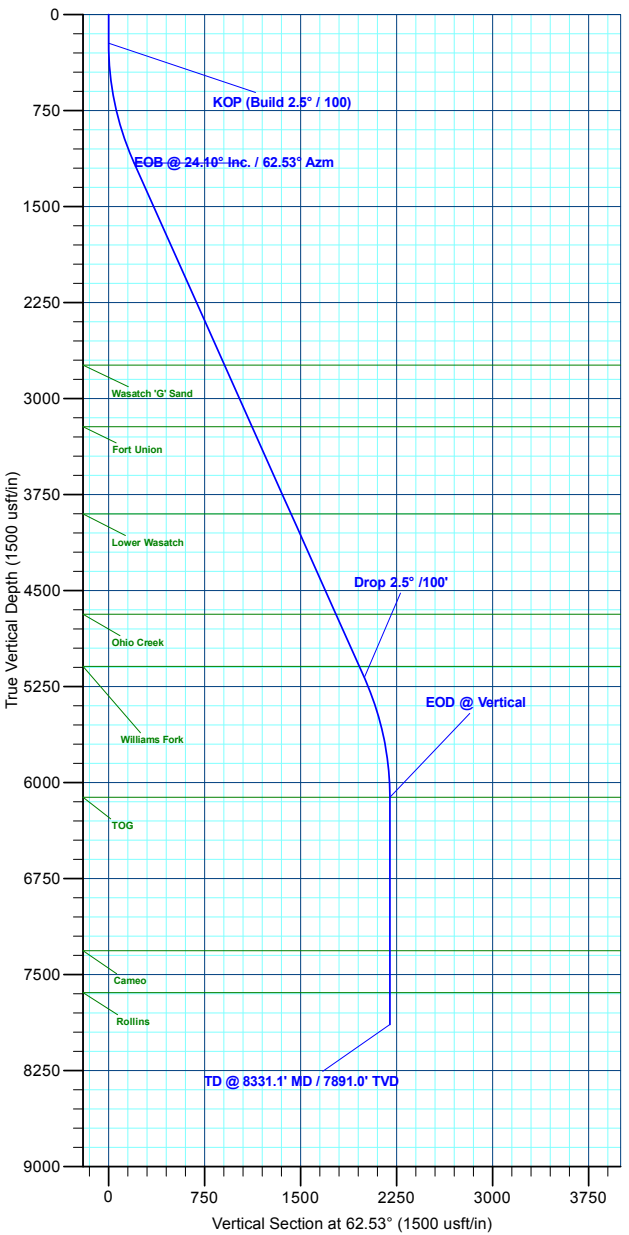


DESIGN TARGET DETAILS

Name	TVD	+N-S	+E-W	Northing	Easting	Latitude	Longitude
PBHL - Laramie Fed 0993-21-16W	7463.0	1013.7	1949.5	1526721.30	2355305.78	39.257398	-107.777046

WELL DETAILS: Laramie Fed 0993-21-16W

+N-S	+E-W	Ground Level : 7463.0	Northing	Easting	Latitude	Longitude	A-12
0.0	0.0		1525756.94	2353331.38	39.254615	-107.783931	



Plan: Design #1 (Laramie Fed 0993-21-16W/OH)
 Created By: Will Jircik Date: 22:17, August 23 2023