

Project: Mesa County, CO
 Site: Laramie 0993-29-01
 Well: Laramie Fed 0993-21-14W
 Wellbore: OH
 Design: Design #1
 Latitude: 39.254675
 Longitude: -107.784014
 Ground Level: 7463.0
 RKB=30' @ 7493.0usft (TBD)

PROJECT DETAILS: Mesa County, CO
 Geodetic System: US State Plane 1983
 Datum: North American Datum 1983
 Ellipsoid: GRS 1980
 Zone: Colorado Central Zone
 System Datum: Mean Sea Level

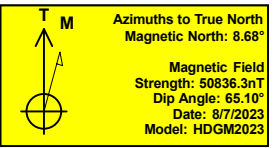
REFERENCE INFORMATION
 Vertical (TVD) Reference: RKB=30' @ 7493.0usft (TBD)
 Section (VS) Reference: Slot - A-8(0.0N, 0.0E)
 Measured Depth Reference: RKB=30' @ 7493.0usft (TBD)
 Calculation Method: Minimum Curvature

FORMATION TOP DETAILS

TVDPath	MDPath	Formation
2739.0	2982.3	Wasatch 'G' Sand
3221.0	3531.1	Fort Union
3901.0	4305.4	Lower Wasatch
4884.0	5196.9	Ohio Creek
5092.0	5660.7	Williams Fork
6115.0	6721.1	TOG
7314.0	7920.1	Cameo
7640.0	8246.1	Rollins

SECTION DETAILS

MD	Inc	Azi	TVD	+N/-S	+E/-W	Dleg	TFace	VSect	Annotation
0.0	0.00	0.00	0.0	0.0	0.0	0.00	0.00	0.0	
225.0	0.00	0.00	225.0	0.0	0.0	0.00	0.00	0.0	KOP (Build 2.5° / 100')
1367.7	28.57	50.55	1320.9	177.3	215.5	2.50	50.55	279.0	EOB @ 28.57° Inc. / 50.55° Azm
5578.5	28.57	50.55	5019.1	1456.7	1770.3	0.00	0.00	2292.6	Drop 2.5° / 100'
6721.1	0.00	0.00	6115.0	1634.0	1985.7	2.50	180.00	2571.6	EOD @ Vertical
8496.1	0.00	0.00	7890.0	1634.0	1985.7	0.00	0.00	2571.6	TD @ 8496.1' MD / 7890.0' TVD

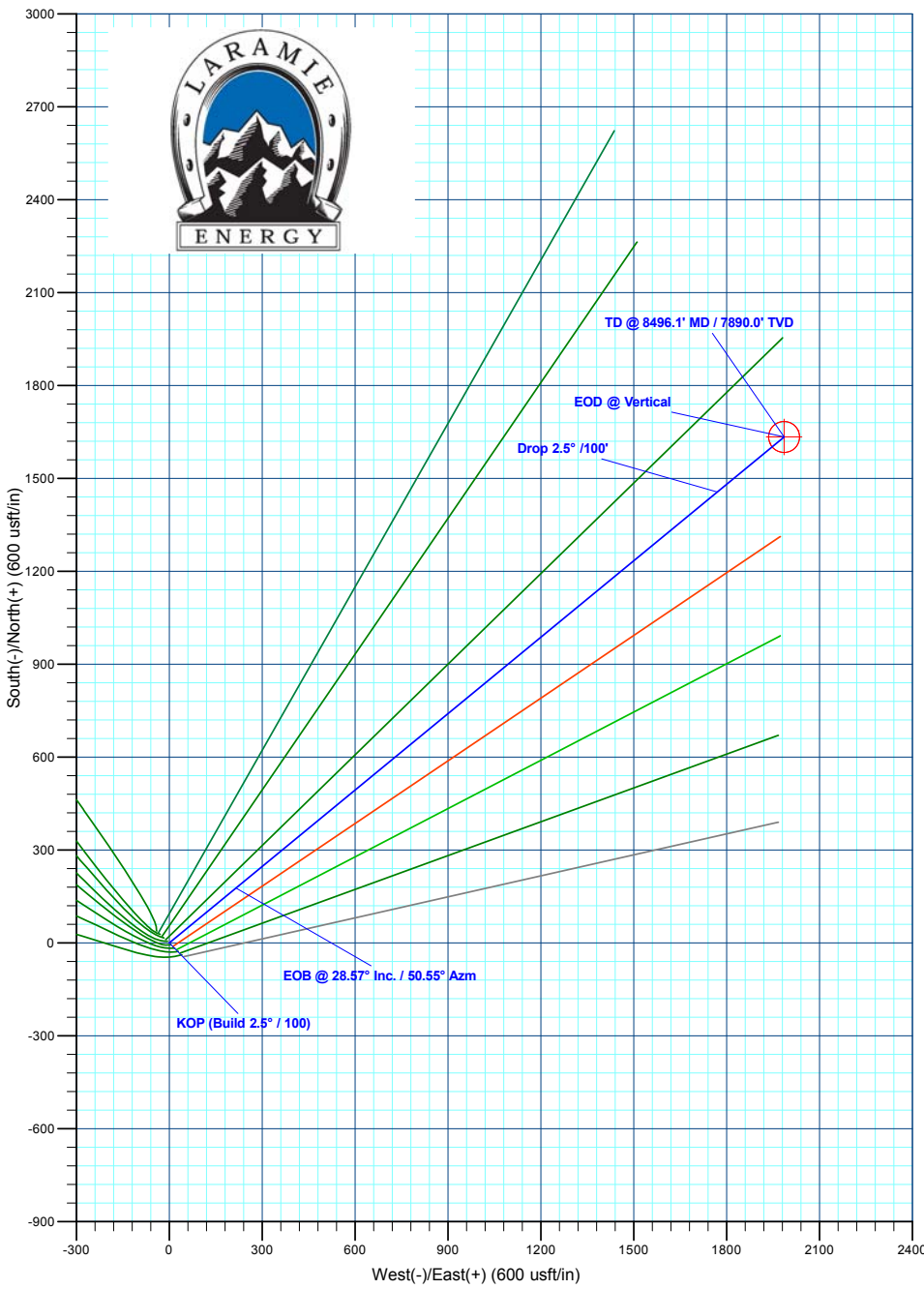
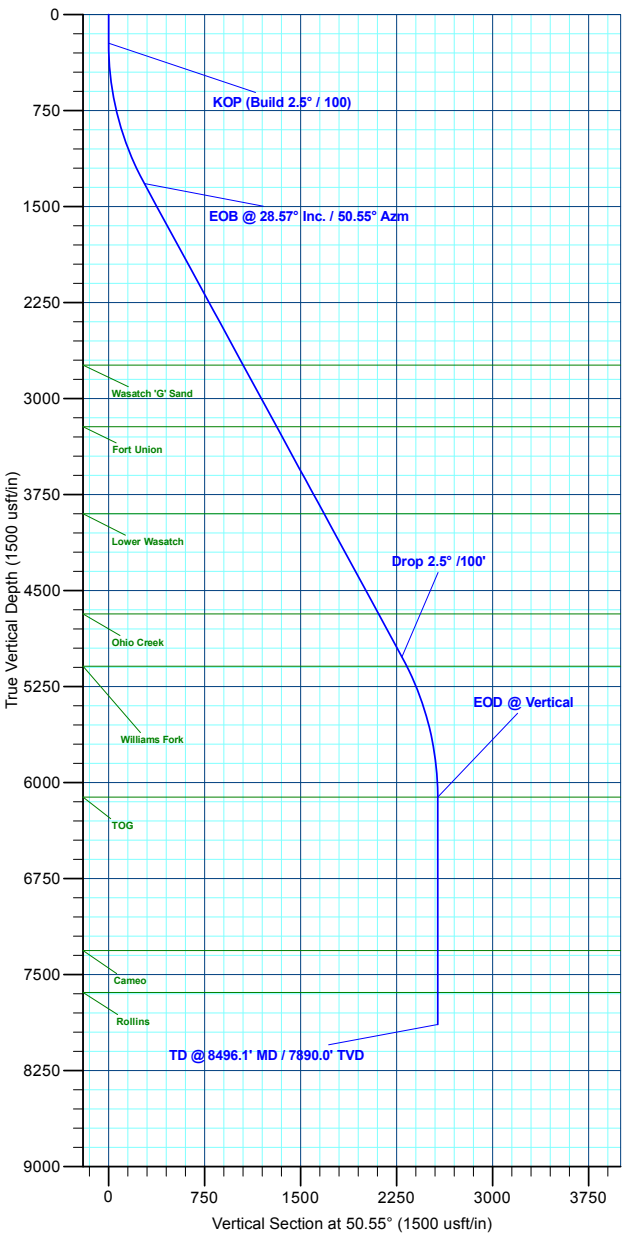


DESIGN TARGET DETAILS

Name	TVD	+N/-S	+E/-W	Northing	Easting	Latitude	Longitude
PBHL - Laramie Fed 0993-21-14W	7463.0	1634.0	1985.7	1527362.89	2355334.61	39.259161	-107.777001

WELL DETAILS: Laramie 29-01 Fed 0993-21-14W

Ground Level : 7463.0		Latitude	Longitude
+N/-S	+E/-W	Northing	Easting
0.0	0.0	1525779.37	2353308.43
		39.254675	-107.784014
			A-8



Plan: Design #1 (Laramie 29-01 Fed 0993-21-14W/OH)
 Created By: Will Jircik Date: 22:10, August 23 2023