

FOUND 2014  
ALUM CAP  
"PLS 22097"

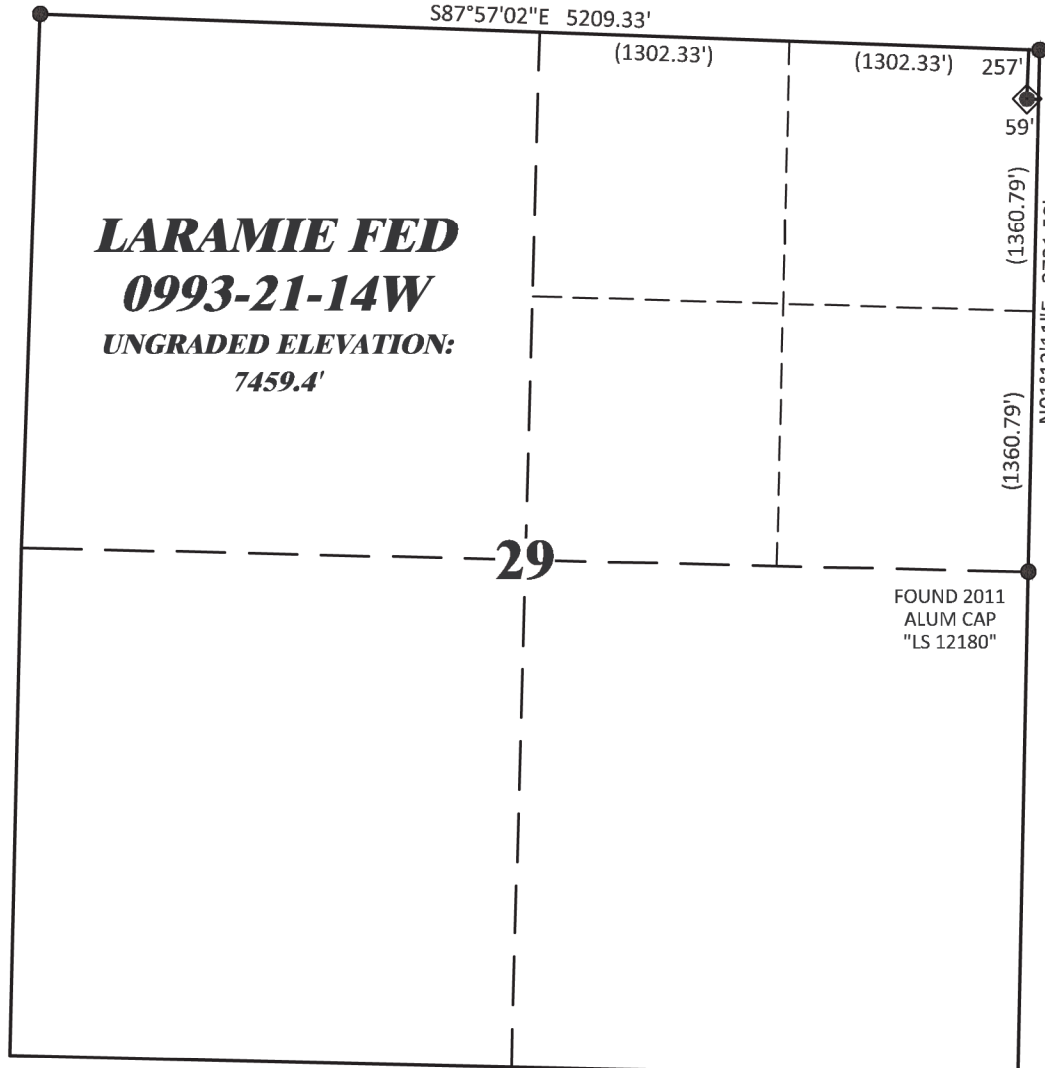
**R. 93 W.**



**GRID NORTH**  
SCALE' 1" = 1000'  
500' 0 1000'

**T. 9 S.**

**SHL**  
**LATITUDE (NAD 83)**  
NORTH 39.254675 DEG.  
**LONGITUDE (NAD 83)**  
WEST 107.784014 DEG  
**NORTHING (NAD 83)**  
1525779.47  
**EASTING (NAD 83)**  
2353308.54



**BASIS OF BEARING/DATUM**  
SPCS CO CENTRAL ZONE NAD 27 BASED  
ON GPS STATIC OBSERVATIONS AND  
OPUS SOLUTION ON DRG CONTROL  
POINT "CP 16-9-93" HAVING A  
POSITION OF:  
NAD83(2011)  
LAT 39° 16' 16.64" NORTH  
LONG 107° 46' 11.24" WEST  
NAVD88 ELEVATION: 7245.29

THE NORTH LINE OF SECTION 29,  
MONUMENTED AS SHOWN AND  
BEARING S87°57'02"E.

**NOTES**

1. GPS OPERATOR T. SHERRILL OBSERVED A PDOP OF 1.3.
2. ALL GPS OBSERVATIONS ARE IN COMPLIANCE WITH COGCC RULE No.215.
3. EXISTING IMPROVEMENTS WITHIN 2000' OF LOCATION. SEE LOC. DRAWING.
4. SURROUNDING SURFACE USE IS NATIVE BRUSH, NON CROP RANGELAND.

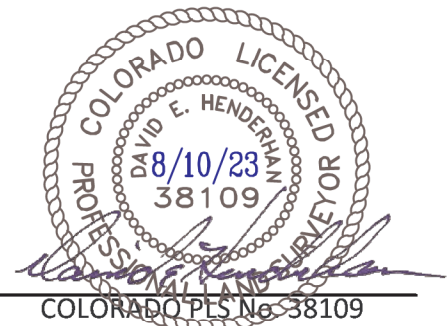
**LEGEND**

- ◆ WELL LOCATION
- FOUND MONUMENT

**SURVEYOR'S STATEMENT**

I, DAVID E. HENDERHAN, AN EMPLOYEE AND AGENT ON BEHALF OF D.R. GRIFFIN & ASSOCIATES, INC. STATE THE PLAT HEREON IS A CORRECT REPRESENTATION OF A SURVEY MADE UNDER MY SUPERVISION ON THE 24th DAY OF APRIL, 2023 OF THE SHOWN LARAMIE FED 0993-21-14W AND THAT THE LOCATION HAS BEEN STAKED ON THE GROUND AS SHOWN ON THIS PLAT.

Notice: In accordance with Colorado State Law, any legal action based upon any defect in this survey plat must commence within three (3) years after first discovery of such defect. In no event, may any action based upon any defect in this survey plat be commenced more than ten (10) years from the date of certification shown hereon.



**LARAMIE 0993-29-01**

COLORADO PLS No. 38109



**PLAT OF DRILLING LOCATION IN  
NENE, SECTION 29, FOR  
LARAMIE ENERGY, LLC**

<b>DRAWN: 8/10/2023 - DEH</b>	<b>SCALE: 1" = 1000'</b>
<b>REVISED: N/A</b>	<b>DRG JOB No. 22334</b>
	<b>A8-21-14W</b>

**257' F/NL, & 59' F/EL, SECTION 29,  
T. 9 S., R. 93 W., 6TH P.M.,  
MESA COUNTY, COLORADO**

