

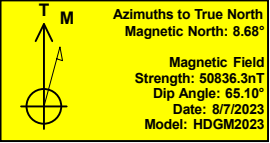
Project: Mesa County, CO
 Site: Laramie 0993-29-01
 Well: Laramie Fed 0993-21-11W
 Wellbore: OH
 Design: Design #1
 Latitude: 39.254766
 Longitude: -107.784137
 Ground Level: 7463.0
 RKB=30' @ 7493.0usft (TBD)

PROJECT DETAILS: Mesa County, CO
 Geodetic System: US State Plane 1983
 Datum: North American Datum 1983
 Ellipsoid: GRS 1980
 Zone: Colorado Central Zone
 System Datum: Mean Sea Level

REFERENCE INFORMATION
 Vertical (TVD) Reference: RKB=30' @ 7493.0usft (TBD)
 Section (VS) Reference: Slot - A-2(0.0N, 0.0E)
 Measured Depth Reference: RKB=30' @ 7493.0usft (TBD)
 Calculation Method: Minimum Curvature

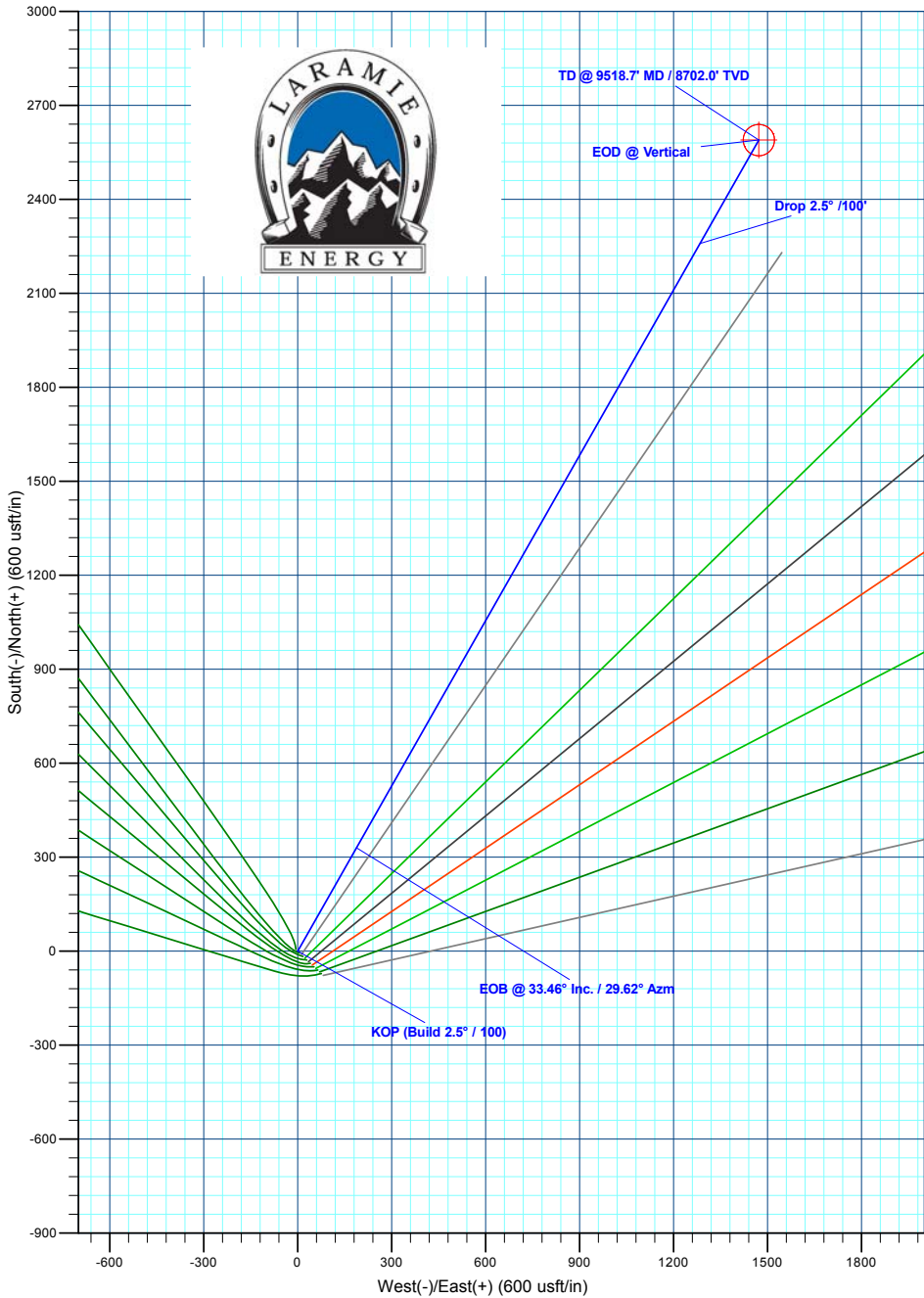
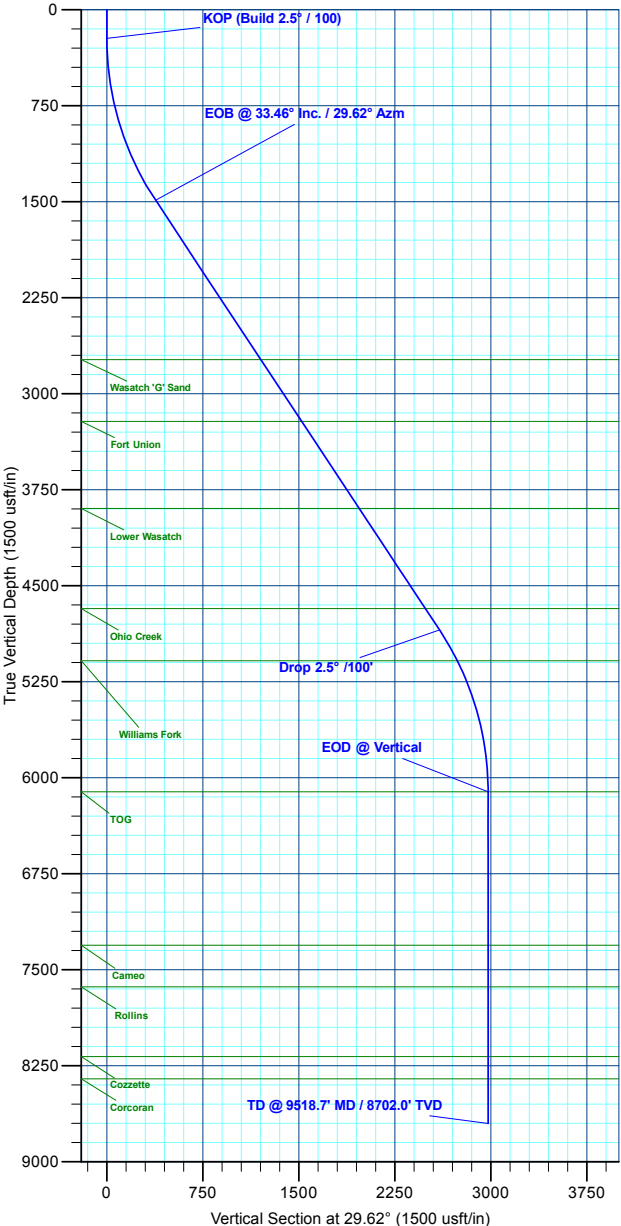
SECTION DETAILS									
MD	Inc	Azi	TVD	+N/-S	+E/-W	Dleg	TFace	VSect	Annotation
0.0	0.00	0.00	0.0	0.0	0.0	0.00	0.00	0.0	
225.0	0.00	0.00	225.0	0.0	0.0	0.00	0.00	0.0	KOP (Build 2.5° / 100)
1563.5	33.46	29.62	1488.7	330.2	187.7	2.50	29.62	379.9	EOB @ 33.46° Inc. / 29.62° Azm
5588.2	33.46	29.62	4846.3	2259.4	1284.6	0.00	0.00	2599.0	Drop 2.5° / 100'
6926.7	0.00	0.00	6110.0	2589.6	1472.3	2.50	180.00	2978.9	EOD @ Vertical
9518.7	0.00	0.00	8702.0	2589.6	1472.3	0.00	0.00	2978.9	TD @ 9518.7' MD / 8702.0' TVD

FORMATION TOP DETAILS		
TVDPath	MDPath	Formation
2734.0	3056.2	Wasatch 'G' Sand
3216.0	3634.0	Fort Union
3896.0	4449.1	Lower Wasatch
4679.0	5387.7	Ohio Creek
5087.0	5866.3	Williams Fork
6110.0	6926.7	TOG
7309.0	8125.7	Cameo
7635.0	8451.7	Rollins
8179.0	8995.7	Cozzette
8352.0	9168.7	Corcoran



DESIGN TARGET DETAILS							
Name	TVD	+N/-S	+E/-W	Northing	Easting	Latitude	Longitude
PBHL - Laramie Fed 0993-21-11W	7463.0	2589.6	1472.3	1528365.18	2354811.41	39.261876	-107.778937

WELL DETAILS: Laramie 29-01 Fed 0993-21-11W					
+N/-S	+E/-W	Ground Level : 7463.0			
0.0	0.0	Northing	Easting	Latitude	Longitude
		1525813.38	2353274.45	39.254766	-107.784137
					A-2



Plan: Design #1 (Laramie 29-01 Fed 0993-21-11W/OH)
 Created By: Will Jircik Date: 21:57, August 23 2023