

Inspection Photos

Location: KMG Barefoot TB and WH 8.2.24



Photo 1 – Apr



Photo 2 –



Inspection Photos

Location

Facility ID:



Photo 3 –



Photo 4 –

Inspection Photos
Location
Facility ID:



Photo 5 –

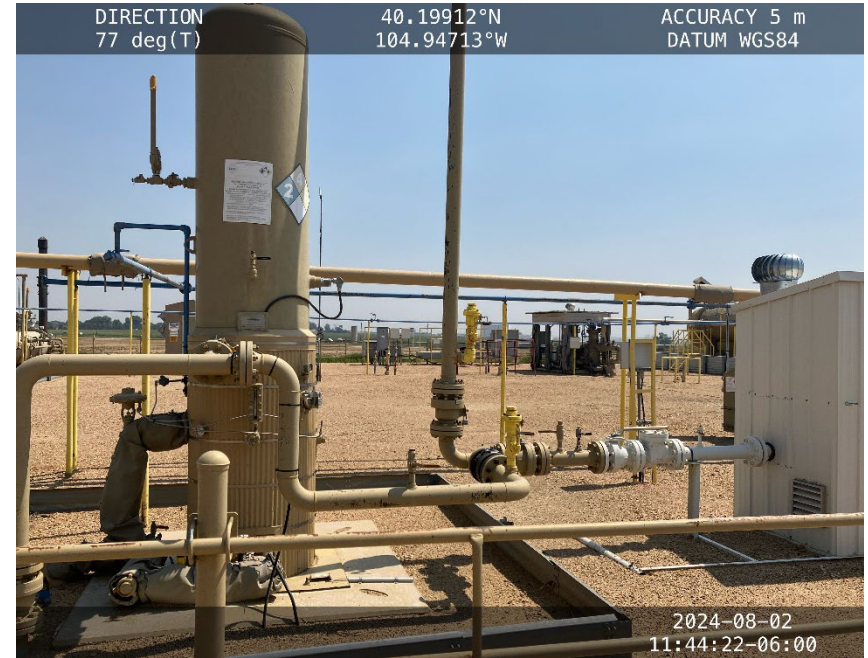


Photo 6 –



Inspection Photos
Location
Facility ID:



Photo 7 –



Photo 8 –



Inspection Photos

Location

Facility ID:



Photo 9 –

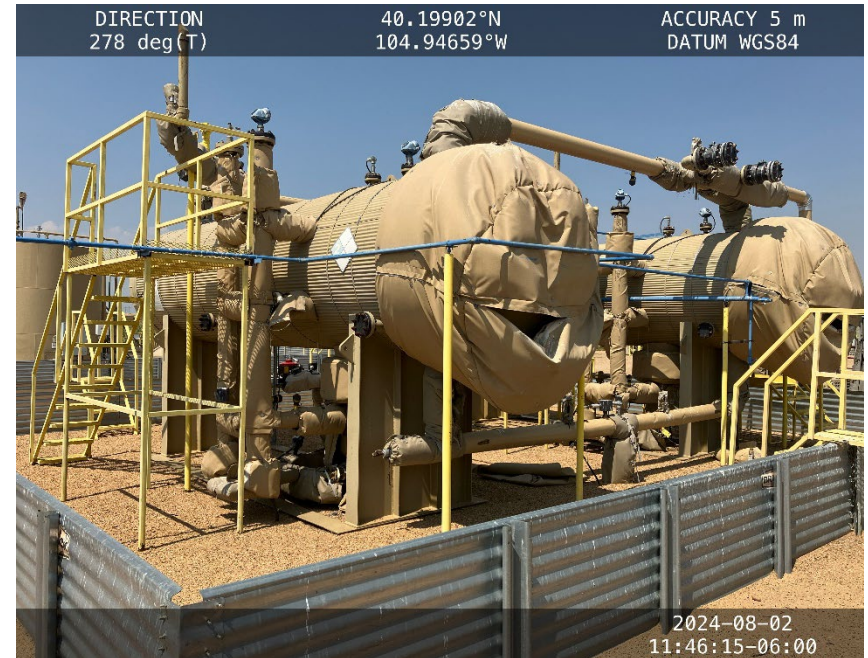


Photo 10 –



Inspection Photos
Location
Facility ID:



Photo 9 –



Photo 10 –



Inspection Photos
Location
Facility ID:



Photo 9 –



Photo 10 –



Inspection Photos

Location

Facility ID:

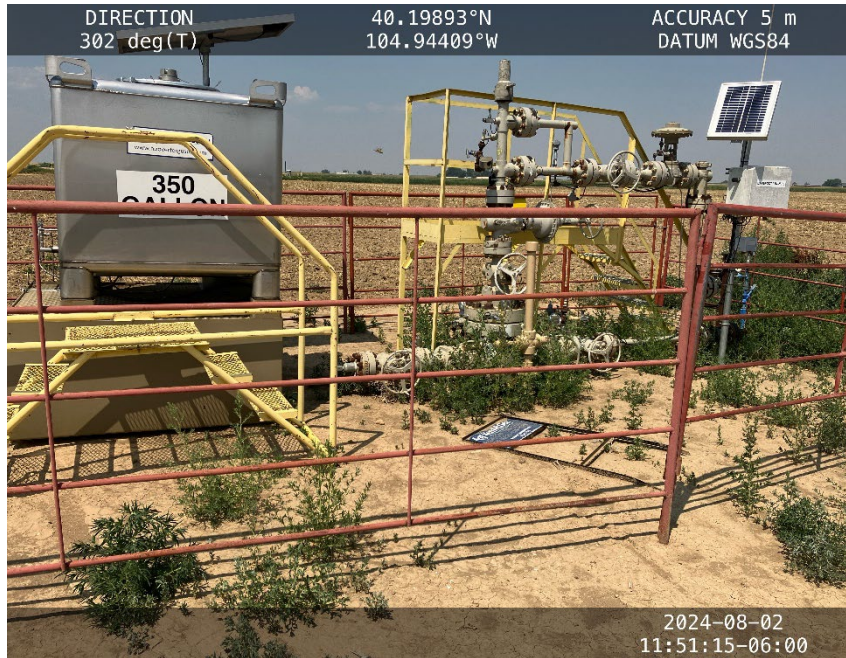


Photo 9 –



Photo 10 –



Inspection Photos

Location

Facility ID:



Photo 9 –

Photo 10 –



Inspection Photos

Location

Facility ID:

Photo 9 –

Photo 10 –



COLORADO
Energy & Carbon Management
Commission
Department of Natural Resources

Inspection Photos

Location

Facility ID:

Photo 9 –

Photo 10 –



COLORADO
Energy & Carbon Management
Commission
Department of Natural Resources

Inspection Photos

Location

Facility ID:

Photo 9 –

Photo 10 –



COLORADO
Energy & Carbon Management
Commission
Department of Natural Resources

Inspection Photos

Location

Facility ID:

Photo 9 –

Photo 10 –



COLORADO
Energy & Carbon Management
Commission
Department of Natural Resources

Inspection Photos

Location

Facility ID:

Photo 3 –

Photo 4 –



COLORADO
Energy & Carbon Management
Commission

Department of Natural Resources

Inspection Photos

Location

Facility ID:

Photo 5 –

Photo 6 –



Inspection Photos

Location

Facility ID:

Photo 7 –

Photo 8 –



COLORADO

**Oil & Gas Conservation
Commission**

Department of Natural Resources

Inspection Photos

Location

Facility ID:

Photo 9 –

Photo 10 –



Inspection Photos

Location

Facility ID:

Photo 9 –

Photo 10 –



Inspection Photos

Location

Facility ID:

Photo 9 –

Photo 10 –



Inspection Photos

Location

Facility ID:

Photo 9 –

Photo 10 –



COLORADO

Oil & Gas Conservation
Commission

Department of Natural Resources

Inspection Photos

Location

Facility ID:

Photo 9 –

Photo 10 –



COLORADO

Oil & Gas Conservation
Commission

Department of Natural Resources

Inspection Photos

Location

Facility ID:

Photo 9 –

Photo 10 –



Inspection Photos

Location

Facility ID:

Photo 9 –

Photo 10 –



Inspection Photos

Location

Facility ID:

Photo 9 –

Photo 10 –



COLORADO

**Oil & Gas Conservation
Commission**

Department of Natural Resources

Inspection Photos

Location

Facility ID:

Photo 9 –

Photo 10 –



Inspection Photos

Location

Facility ID:

Photo 3 –

Photo 4 –



Inspection Photos

Location

Facility ID:

Photo 5 –

Photo 6 –



Inspection Photos

Location

Facility ID:

Photo 7 –

Photo 8 –



COLORADO

**Oil & Gas Conservation
Commission**

Department of Natural Resources

Inspection Photos

Location

Facility ID:

Photo 9 –

Photo 10 –



Inspection Photos

Location

Facility ID:

Photo 9 –

Photo 10 –



Inspection Photos

Location

Facility ID:

Photo 9 –

Photo 10 –



Inspection Photos

Location

Facility ID:

Photo 9 –

Photo 10 –



Inspection Photos

Location

Facility ID:

Photo 9 –

Photo 10 –



Inspection Photos

Location

Facility ID:

Photo 9 –

Photo 10 –



Inspection Photos

Location

Facility ID:

Photo 9 –

Photo 10 –



Inspection Photos

Location

Facility ID:

Photo 9 –

Photo 10 –



Inspection Photos

Location

Facility ID:

Photo 9 –

Photo 10 –



Inspection Photos

Location

Facility ID:

Photo 9 –

Photo 10 –



COLORADO

Oil & Gas Conservation
Commission

Department of Natural Resources

Inspection Photos

Location

Facility ID:

Photo 9 –

Photo 10 –



COLORADO

Oil & Gas Conservation
Commission

Department of Natural Resources

Inspection Photos

Location

Facility ID:

Photo 9 –

Photo 10 –



COLORADO

Oil & Gas Conservation
Commission

Department of Natural Resources