



P&A Wellbore For State

Well Name: Hen 21N

Original Hole [Land]		Well Header	
MD (ftK B)	Vertical schematic (actual)	Surface UWI 0512351798	Business Unit Rockies
		Gov Auth Dist Evans	Prod Tree Loc Land
		Orig. KB to Gnd (ft) 28.50	Original Spud Date 9/30/2023
		Abandon Date	Well Sub-Status PR
		High... N	
		Comment	
		Surface Location (Congressional)	
		Qtr 3 SW	Qtr 4 NE
		Section	Township
		Range	Latitude (°)
		Longitude (°)	
		Wellbore Sections	
		Section Des	Hole Size (in)
		Top Depth (ftKB)	Btm Depth (ftKB)
		Surface	13 1/2
		Surface	13 1/2
		Production	8 1/2
			14.0
			28.5
			1,733.5
			1,733.5
			15,388.0
		Casing Strings	
		Csg Des	Run Date
		OD (in)	Wt/Len (lb/ft)
		Grade	Top Depth (MD) (ftKB)
		Set Depth (MD) (ftKB)	
		Surface	6/25/2023
		Production	10/3/2023
			9 5/8
			36.00
			J-55
			28.5
			1723.6
			5 1/2
			20.00
			P-110
			28.5
			15377
		Cement	
		Des	Start Date
		Top (ftKB)	Btm (ftKB)
		Surface	6/25/2023
		Production Casing Cement	10/3/2023
			28.5
			1,870.0
			1,723.6
			15,377.0
		Zone Statuses	
		Zone Name	Status Date
		Status	Fluid Type
		Job	Prod Method
		Perforation Data	
		Linked Zone	Explosive Type
		Entered Shot Total	Top (ftKB)
		Btm (ftKB)	Date
		Niobrara C, Original Hole	RDX
		4	7,778.0
		7,779.0	6/9/2024
		Niobrara C, Original Hole	RDX
		4	7,825.0
		7,826.0	6/9/2024
		Niobrara C, Original Hole	RDX
		4	7,873.0
		7,874.0	6/9/2024
		Niobrara C, Original Hole	RDX
		4	7,920.0
		7,921.0	6/9/2024
		Niobrara C, Original Hole	RDX
		5	7,967.0
		7,968.0	6/9/2024
		Niobrara C, Original Hole	RDX
		5	8,014.0
		8,015.0	6/9/2024
		Niobrara C, Original Hole	RDX
		5	8,062.0
		8,063.0	6/9/2024
		Niobrara C, Original Hole	RDX
		5	8,109.0
		8,110.0	6/9/2024
		Niobrara C, Original Hole	RDX
		4	8,154.0
		8,155.0	6/9/2024
		Niobrara C, Original Hole	RDX
		4	8,205.0
		8,206.0	6/9/2024
		Niobrara C, Original Hole	RDX
		4	8,251.0
		8,252.0	6/9/2024
		Niobrara C, Original Hole	RDX
		4	8,298.0
		8,299.0	6/9/2024
		Niobrara C, Original Hole	RDX
		5	8,345.0
		8,346.0	6/9/2024
		Niobrara C, Original Hole	RDX
		5	8,392.0
		8,393.0	6/9/2024
		Niobrara C, Original Hole	RDX
		5	8,440.0
		8,441.0	6/9/2024
		Niobrara C, Original Hole	RDX
		5	8,487.0
		8,488.0	6/9/2024
		Niobrara C, Original Hole	RDX
		4	8,534.0
		8,535.0	6/8/2024
		Niobrara C, Original Hole	RDX
		4	8,581.0
		8,582.0	6/8/2024
		Niobrara C, Original Hole	RDX
		4	8,629.0
		8,630.0	6/8/2024
		Niobrara C, Original Hole	RDX
		4	8,674.0
		8,675.0	6/8/2024
		Niobrara C, Original Hole	RDX
		5	8,726.0
		8,727.0	6/8/2024
		Niobrara C, Original Hole	RDX
		5	8,770.0
		8,771.0	6/8/2024
		Niobrara C, Original Hole	RDX
		5	8,818.0
		8,819.0	6/8/2024
		Niobrara C, Original Hole	RDX
		5	8,865.0
		8,866.0	6/8/2024
		Niobrara C, Original Hole	RDX
		4	8,912.0
		8,913.0	6/8/2024
		Niobrara C, Original Hole	RDX
		4	8,960.0
		8,961.0	6/8/2024
		Niobrara C, Original Hole	RDX
		4	9,007.0
		9,008.0	6/8/2024
		Niobrara C, Original Hole	RDX
		4	9,054.0
		9,055.0	6/8/2024
		Niobrara C, Original Hole	RDX
		5	9,101.0
		9,102.0	6/8/2024
		Niobrara C, Original Hole	RDX
		5	9,149.0
		9,150.0	6/8/2024
		Niobrara C, Original Hole	RDX
		5	9,196.0
		9,197.0	6/8/2024
		Niobrara C, Original Hole	RDX
		5	9,243.0
		9,244.0	6/8/2024
		Niobrara C, Original Hole	RDX
		4	9,290.0
		9,291.0	6/7/2024
		Niobrara C, Original Hole	RDX
		4	9,334.0
		9,335.0	6/7/2024
		Niobrara C, Original Hole	RDX
		4	9,385.0
		9,386.0	6/7/2024
		Niobrara C, Original Hole	RDX
		4	9,432.0
		9,433.0	6/7/2024
		Niobrara C, Original Hole	RDX
		5	9,479.0
		9,480.0	6/7/2024



P&A Wellbore For State

Well Name: Hen 21N

Original Hole [Land]		Perforation Data						
MD (ftK B)	Vertical schematic (actual)	Linked Zone	Explosive Type	Entered Shot Total	Top (ftKB)	Btm (ftKB)	Date	
1,870.1		Niobrara C, Original Hole	RDX	5	9,527.0	9,528.0	6/7/2024	
7,778.2		Niobrara C, Original Hole	RDX	5	9,574.0	9,575.0	6/7/2024	
8,014.1		Niobrara C, Original Hole	RDX	5	9,621.0	9,622.0	6/7/2024	
8,252.0		Niobrara C, Original Hole	RDX	4	9,668.0	9,669.0	6/7/2024	
8,535.1		Niobrara C, Original Hole	RDX	4	9,716.0	9,717.0	6/7/2024	
8,818.9		Niobrara C, Original Hole	RDX	4	9,763.0	9,764.0	6/7/2024	
9,101.0		Niobrara C, Original Hole	RDX	4	9,810.0	9,811.0	6/7/2024	
9,384.8		Niobrara C, Original Hole	RDX	5	9,857.0	9,858.0	6/7/2024	
9,668.0		Niobrara C, Original Hole	RDX	5	9,908.0	9,909.0	6/7/2024	
9,952.1		Niobrara C, Original Hole	RDX	5	9,952.0	9,953.0	6/7/2024	
10,234.9		Niobrara C, Original Hole	RDX	5	9,999.0	10,000.0	6/7/2024	
10,519.0		Niobrara C, Original Hole	RDX	4	10,046.0	10,047.0	6/7/2024	
10,803.1		Niobrara C, Original Hole	RDX	4	10,094.0	10,095.0	6/7/2024	
11,086.0		Niobrara C, Original Hole	RDX	4	10,141.0	10,142.0	6/7/2024	
11,370.1		Niobrara C, Original Hole	RDX	4	10,188.0	10,189.0	6/7/2024	
11,638.5		Niobrara C, Original Hole	RDX	5	10,235.0	10,236.0	6/7/2024	
11,889.1		Niobrara C, Original Hole	RDX	5	10,283.0	10,284.0	6/7/2024	
12,172.9		Niobrara C, Original Hole	RDX	5	10,330.0	10,331.0	6/7/2024	
12,457.0		Niobrara C, Original Hole	RDX	5	10,377.0	10,378.0	6/7/2024	
12,740.2		Niobrara C, Original Hole	RDX	4	10,424.0	10,425.0	6/6/2024	
13,023.9		Niobrara C, Original Hole	RDX	4	10,472.0	10,473.0	6/6/2024	
13,307.1		Niobrara C, Original Hole	RDX	4	10,519.0	10,520.0	6/6/2024	
13,595.1		Niobrara C, Original Hole	RDX	4	10,566.0	10,567.0	6/6/2024	
13,874.0		Niobrara C, Original Hole	RDX	5	10,610.0	10,611.0	6/6/2024	
14,154.9		Niobrara C, Original Hole	RDX	5	10,663.0	10,664.0	6/6/2024	
14,440.9		Niobrara C, Original Hole	RDX	5	10,708.0	10,709.0	6/6/2024	
14,724.1		Niobrara C, Original Hole	RDX	5	10,755.0	10,756.0	6/6/2024	
14,961.0		Niobrara C, Original Hole	RDX	4	10,803.0	10,804.0	6/6/2024	
15,245.1		Niobrara C, Original Hole	RDX	4	10,850.0	10,851.0	6/6/2024	
15,377.0		Niobrara C, Original Hole	RDX	4	10,897.0	10,898.0	6/6/2024	
			Niobrara C, Original Hole	RDX	4	10,944.0	10,945.0	6/6/2024
			Niobrara C, Original Hole	RDX	5	10,992.0	10,993.0	6/6/2024
		Niobrara C, Original Hole	RDX	5	11,039.0	11,040.0	6/6/2024	
		Niobrara C, Original Hole	RDX	5	11,086.0	11,087.0	6/6/2024	
		Niobrara C, Original Hole	RDX	5	11,133.0	11,134.0	6/6/2024	
		Niobrara C, Original Hole	RDX	4	11,185.0	11,186.0	6/6/2024	
		Niobrara C, Original Hole	RDX	4	11,228.0	11,229.0	6/6/2024	
		Niobrara C, Original Hole	RDX	4	11,275.0	11,276.0	6/6/2024	
		Niobrara C, Original Hole	RDX	4	11,322.0	11,323.0	6/6/2024	
		Niobrara C, Original Hole	RDX	5	11,370.0	11,371.0	6/6/2024	
		Niobrara C, Original Hole	RDX	5	11,417.0	11,418.0	6/6/2024	
		Niobrara C, Original Hole	RDX	5	11,464.0	11,465.0	6/6/2024	
		Niobrara C, Original Hole	RDX	5	11,513.0	11,514.0	6/6/2024	
		Niobrara C, Original Hole	RDX	4	11,559.0	11,560.0	6/5/2024	
		Niobrara C, Original Hole	RDX	4	11,606.0	11,607.0	6/5/2024	
		Niobrara C, Original Hole	RDX	4	11,653.0	11,654.0	6/5/2024	
		Niobrara C, Original Hole	RDX	4	11,700.0	11,701.0	6/5/2024	
		Niobrara C, Original Hole	RDX	5	11,748.0	11,749.0	6/5/2024	
		Niobrara C, Original Hole	RDX	5	11,795.0	11,796.0	6/5/2024	
		Niobrara C, Original Hole	RDX	5	11,842.0	11,843.0	6/5/2024	
		Niobrara C, Original Hole	RDX	5	11,889.0	11,890.0	6/5/2024	
		Niobrara C, Original Hole	RDX	4	11,937.0	11,938.0	6/5/2024	
		Niobrara C, Original Hole	RDX	4	11,984.0	11,985.0	6/5/2024	
		Niobrara C, Original Hole	RDX	4	12,028.0	12,029.0	6/5/2024	
		Niobrara C, Original Hole	RDX	4	12,079.0	12,080.0	6/5/2024	
		Niobrara C, Original Hole	RDX	5	12,126.0	12,127.0	6/5/2024	
		Niobrara C, Original Hole	RDX	5	12,173.0	12,174.0	6/5/2024	
		Niobrara C, Original Hole	RDX	5	12,220.0	12,221.0	6/5/2024	
		Niobrara C, Original Hole	RDX	5	12,264.0	12,265.0	6/5/2024	
		Niobrara C, Original Hole	RDX	4	12,315.0	12,316.0	6/4/2024	



P&A Wellbore For State

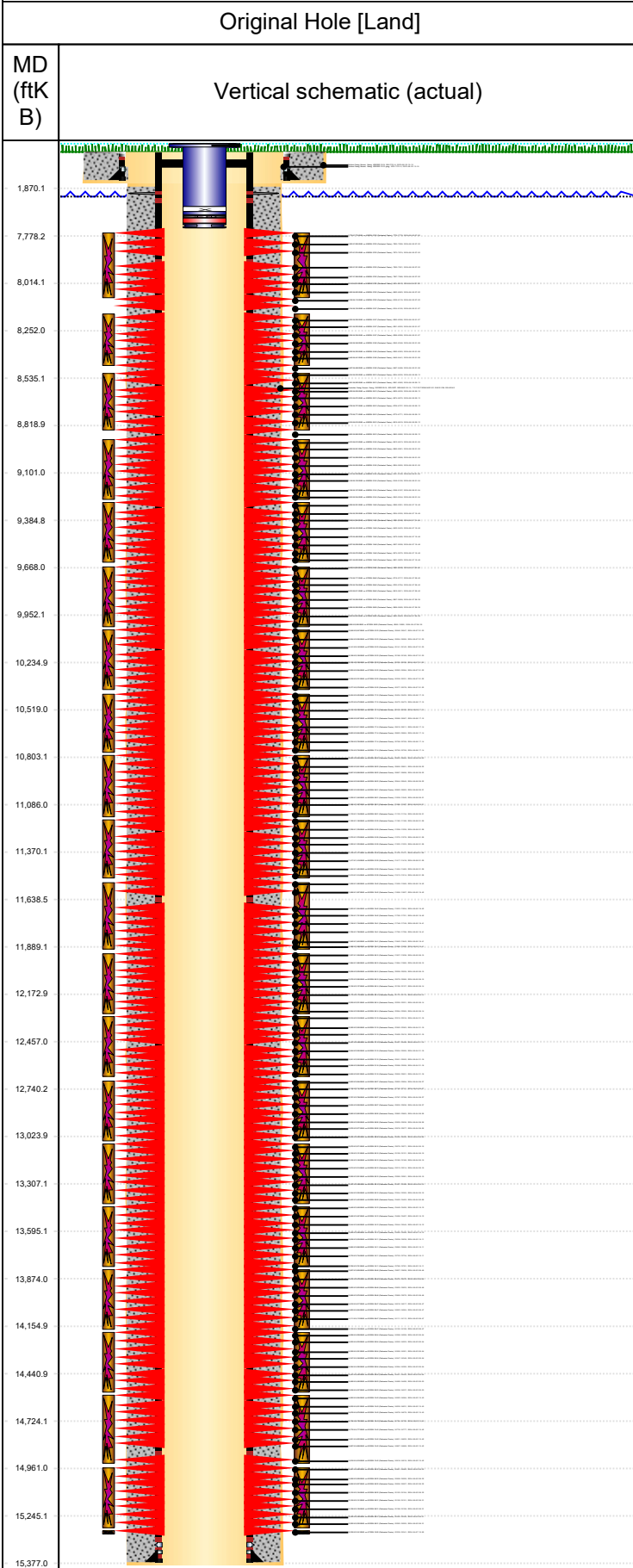
Well Name: Hen 21N

Original Hole [Land]		Perforation Data					
MD (ftK B)	Vertical schematic (actual)	Linked Zone	Explosive Type	Entered Shot Total	Top (ftKB)	Btm (ftKB)	Date
1,870.1		Niobrara C, Original Hole	RDX	4	12,362.0	12,363.0	6/4/2024
7,778.2		Niobrara C, Original Hole	RDX	4	12,409.0	12,410.0	6/4/2024
8,014.1		Niobrara C, Original Hole	RDX	4	12,457.0	12,458.0	6/4/2024
8,252.0		Niobrara C, Original Hole	RDX	5	12,504.0	12,505.0	6/4/2024
8,535.1		Niobrara C, Original Hole	RDX	5	12,551.0	12,552.0	6/4/2024
8,818.9		Niobrara C, Original Hole	RDX	5	12,598.0	12,599.0	6/4/2024
9,101.0		Niobrara C, Original Hole	RDX	5	12,650.0	12,651.0	6/4/2024
9,384.8		Niobrara C, Original Hole	RDX	4	12,693.0	12,694.0	6/4/2024
9,668.0		Niobrara C, Original Hole	RDX	4	12,740.0	12,741.0	6/4/2024
9,952.1		Niobrara C, Original Hole	RDX	4	12,787.0	12,788.0	6/4/2024
10,234.9		Niobrara C, Original Hole	RDX	4	12,835.0	12,836.0	6/4/2024
10,519.0		Niobrara C, Original Hole	RDX	5	12,882.0	12,883.0	6/4/2024
10,803.1		Niobrara C, Original Hole	RDX	5	12,929.0	12,930.0	6/4/2024
11,086.0		Niobrara C, Original Hole	RDX	5	12,976.0	12,977.0	6/4/2024
11,370.1		Niobrara C, Original Hole	RDX	5	13,024.0	13,025.0	6/4/2024
11,638.5		Niobrara C, Original Hole	RDX	4	13,070.0	13,071.0	6/4/2024
11,889.1		Niobrara C, Original Hole	RDX	4	13,120.0	13,121.0	6/4/2024
12,172.9		Niobrara C, Original Hole	RDX	4	13,165.0	13,166.0	6/4/2024
12,457.0		Niobrara C, Original Hole	RDX	4	13,213.0	13,214.0	6/4/2024
12,740.2		Niobrara C, Original Hole	RDX	5	13,260.0	13,261.0	6/4/2024
13,023.9		Niobrara C, Original Hole	RDX	5	13,307.0	13,308.0	6/4/2024
13,307.1		Niobrara C, Original Hole	RDX	5	13,354.0	13,355.0	6/4/2024
13,595.1		Niobrara C, Original Hole	RDX	5	13,402.0	13,403.0	6/4/2024
13,874.0		Niobrara C, Original Hole	RDX	4	13,449.0	13,450.0	6/3/2024
14,154.9		Niobrara C, Original Hole	RDX	4	13,496.0	13,497.0	6/3/2024
14,440.9		Niobrara C, Original Hole	RDX	4	13,544.0	13,545.0	6/3/2024
14,724.1		Niobrara C, Original Hole	RDX	4	13,595.0	13,596.0	6/3/2024
14,961.0		Niobrara C, Original Hole	RDX	5	13,638.0	13,639.0	6/3/2024
15,245.1		Niobrara C, Original Hole	RDX	5	13,685.0	13,686.0	6/3/2024
15,377.0		Niobrara C, Original Hole	RDX	5	13,733.0	13,734.0	6/3/2024
		Niobrara C, Original Hole	RDX	5	13,780.0	13,781.0	6/3/2024
		Niobrara C, Original Hole	RDX	4	13,827.0	13,828.0	6/3/2024
	Niobrara C, Original Hole	RDX	4	13,874.0	13,875.0	6/3/2024	
	Niobrara C, Original Hole	RDX	4	13,922.0	13,923.0	6/3/2024	
	Niobrara C, Original Hole	RDX	4	13,969.0	13,970.0	6/3/2024	
	Niobrara C, Original Hole	RDX	5	14,016.0	14,017.0	6/3/2024	
	Niobrara C, Original Hole	RDX	5	14,063.0	14,064.0	6/3/2024	
	Niobrara C, Original Hole	RDX	5	14,111.0	14,112.0	6/3/2024	
	Niobrara C, Original Hole	RDX	5	14,155.0	14,156.0	6/3/2024	
	Niobrara C, Original Hole	RDX	4	14,208.0	14,209.0	6/3/2024	
	Niobrara C, Original Hole	RDX	4	14,252.0	14,253.0	6/3/2024	
	Niobrara C, Original Hole	RDX	4	14,300.0	14,301.0	6/3/2024	
	Niobrara C, Original Hole	RDX	4	14,347.0	14,348.0	6/3/2024	
	Niobrara C, Original Hole	RDX	5	14,394.0	14,395.0	6/3/2024	
	Niobrara C, Original Hole	RDX	5	14,441.0	14,442.0	6/3/2024	
	Niobrara C, Original Hole	RDX	5	14,489.0	14,490.0	6/3/2024	
	Niobrara C, Original Hole	RDX	5	14,536.0	14,537.0	6/3/2024	
	Niobrara C, Original Hole	RDX	4	14,583.0	14,584.0	6/2/2024	
	Niobrara C, Original Hole	RDX	4	14,630.0	14,631.0	6/2/2024	
	Niobrara C, Original Hole	RDX	4	14,678.0	14,679.0	6/2/2024	
	Niobrara C, Original Hole	RDX	4	14,724.0	14,725.0	6/2/2024	
	Niobrara C, Original Hole	RDX	5	14,776.0	14,777.0	6/2/2024	
	Niobrara C, Original Hole	RDX	5	14,821.0	14,822.0	6/2/2024	
	Niobrara C, Original Hole	RDX	5	14,867.0	14,868.0	6/2/2024	
	Niobrara C, Original Hole	RDX	5	14,918.0	14,919.0	6/2/2024	
	Niobrara C, Original Hole	RDX	4	14,961.0	14,962.0	6/2/2024	
	Niobrara C, Original Hole	RDX	4	15,008.0	15,009.0	6/2/2024	
	Niobrara C, Original Hole	RDX	4	15,056.0	15,057.0	6/2/2024	
	Niobrara C, Original Hole	RDX	4	15,103.0	15,104.0	6/2/2024	
	Niobrara C, Original Hole	RDX	5	15,150.0	15,151.0	6/2/2024	



P&A Wellbore For State

Well Name: Hen 21N



Perforation Data					
Linked Zone	Explosive Type	Entered Shot Total	Top (ftKB)	Btm (ftKB)	Date
Niobrara C, Original Hole	RDX	5	15,198.0	15,199.0	6/2/2024
Niobrara C, Original Hole	RDX	5	15,245.0	15,246.0	6/2/2024
Niobrara C, Original Hole	RDX	5	15,292.0	15,293.0	6/2/2024
Niobrara C, Original Hole		12	15,339.0	15,341.0	4/7/2024

Stim/Frac Stage			
Zone	Start Date	Top (ftKB)	Btm (ftKB)
Niobrara C, Original Hole	6/9/2024	7,778.1	8,108.9
Niobrara C, Original Hole	6/9/2024	8,156.1	8,486.9
Niobrara C, Original Hole	6/8/2024	8,534.2	8,865.0
Niobrara C, Original Hole	6/8/2024	8,912.0	9,244.0
Niobrara C, Original Hole	6/7/2024	9,290.0	9,622.0
Niobrara C, Original Hole	6/7/2024	9,668.0	10,000.0
Niobrara C, Original Hole	6/7/2024	10,046.0	10,378.0
Niobrara C, Original Hole	6/6/2024	10,424.0	10,756.0
Niobrara C, Original Hole	6/6/2024	10,803.0	11,134.0
Niobrara C, Original Hole	6/6/2024	11,185.0	11,514.0
Niobrara C, Original Hole	6/5/2024	11,559.0	11,890.0
Niobrara C, Original Hole	6/5/2024	11,937.0	12,265.0
Niobrara C, Original Hole	6/5/2024	12,315.0	12,651.0
Niobrara C, Original Hole	6/4/2024	12,693.0	13,025.0
Niobrara C, Original Hole	6/4/2024	13,070.0	13,403.0
Niobrara C, Original Hole	6/3/2024	13,449.0	13,781.0
Niobrara C, Original Hole	6/3/2024	13,827.0	14,156.0
Niobrara C, Original Hole	6/3/2024	14,208.0	14,537.0
Niobrara C, Original Hole	6/2/2024	14,583.0	14,919.0
Niobrara C, Original Hole	6/2/2024	14,961.0	15,293.0
Niobrara C, Original Hole	6/2/2024	15,339.0	15,341.0

Other In Hole					
Run Date	Des	Make	OD (in)	Top (ftKB)	Btm (ftKB)

Logs			
Date	Type	Depth Top (MD) (ftKB)	Btm (ftKB)

Wellbore Plug Back Total Depths			
Date	Type	Com	PBTD (ftKB)
6/25/2024	No Tag Established	DURNING DRILL OUT CLEAN OUT TO 15,283'	428