

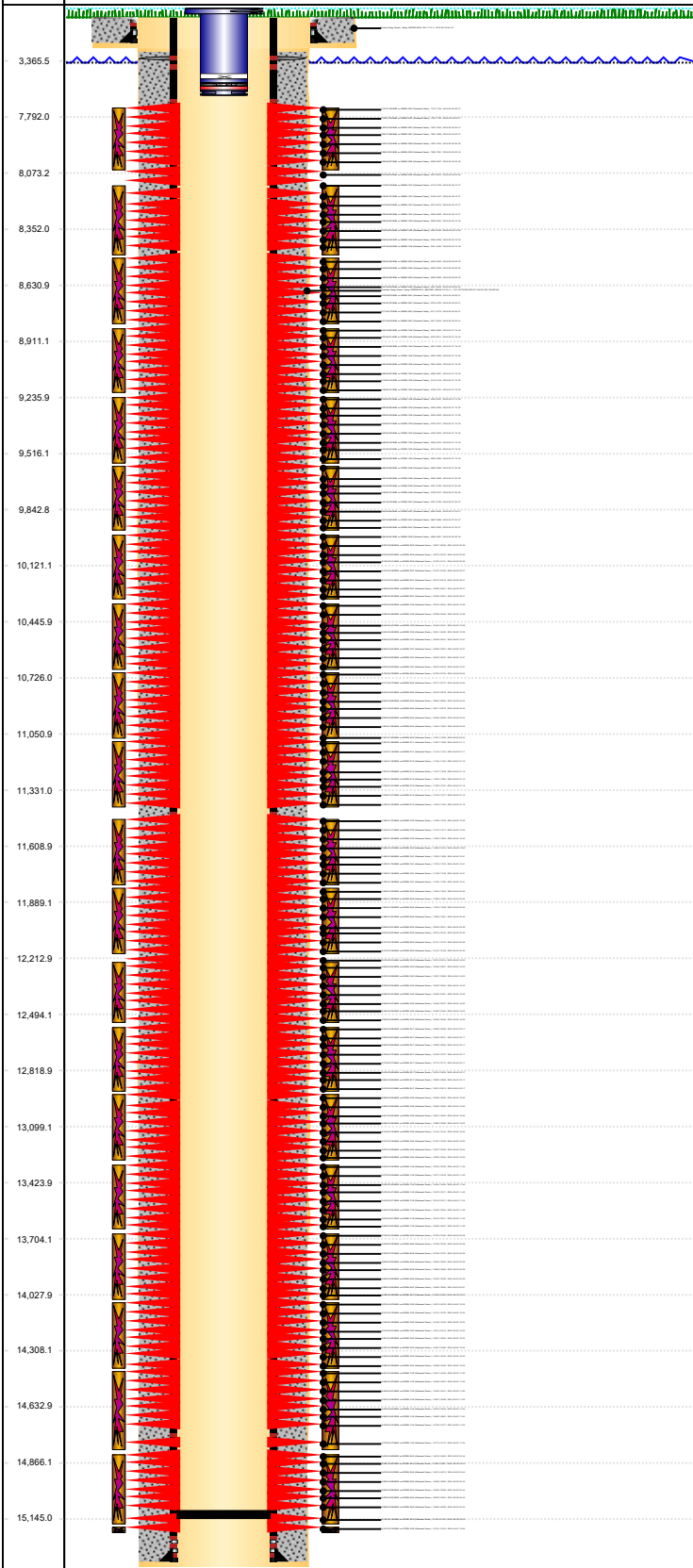


P&A Wellbore For State

Well Name: Hen 18N

Original Hole [Land]

MD (ftK B)
Vertical schematic (actual)



Well Header					
Surface UWI	Business Unit	Gov Auth Dist	Prod Tree Loc		
0512351794	Rockies	Evans	Land		
Orig. KB to Gnd (ft)	Original Spud Date	Abandon Date	Well Sub-Status	High...	
28.50	9/19/2023		PR	N	
Comment					

Surface Location (Congressional)								
Qtr 3	Qtr 4	Section	Twnshp	Twnsh...	Range	Rng E/...	Latitude (°)	Longitude (°)
SW	NE						40.32772	-104.57234

Wellbore Sections			
Section Des	Hole Size (in)	Top Depth (ftKB)	Btm Depth (ftKB)
Surface	13 1/2	14.0	
Surface	13 1/2	28.5	1,720.5
Production	8 1/2	1,720.5	15,237.0

Casing Strings						
Csg Des	Run Date	OD (in)	Wt/Len (lb/ft)	Grade	Top Depth (MD) (ftKB)	Set Depth (MD) (ftKB)
Surface	6/23/2023	9 5/8	36.00	J-55	28.5	1710.3
Production	9/21/2023	5 1/2	20.00	P-110	28.5	15231

Cement			
Des	Start Date	Top (ftKB)	Btm (ftKB)
Surface	6/23/2023	28.5	1,710.3
Production Casing Cement	9/22/2023	2,060.0	15,231.0

Zone Statuses					
Zone Name	Status Date	Status	Fluid Type	Job	Prod Method

Perforation Data					
Linked Zone	Explosive Type	Entered Shot Total	Top (ftKB)	Btm (ftKB)	Date
Niobrara C, Original Hole	RDX	4	7,747.0	7,748.0	6/9/2024
Niobrara C, Original Hole	RDX	4	7,792.0	7,793.0	6/9/2024
Niobrara C, Original Hole	RDX	4	7,843.0	7,844.0	6/9/2024
Niobrara C, Original Hole	RDX	4	7,887.0	7,888.0	6/9/2024
Niobrara C, Original Hole	RDX	5	7,933.0	7,934.0	6/9/2024
Niobrara C, Original Hole	RDX	5	7,980.0	7,981.0	6/9/2024
Niobrara C, Original Hole	RDX	5	8,026.0	8,027.0	6/9/2024
Niobrara C, Original Hole	RDX	5	8,073.0	8,074.0	6/9/2024
Niobrara C, Original Hole	RDX	4	8,119.0	8,120.0	6/8/2024
Niobrara C, Original Hole	RDX	4	8,166.0	8,167.0	6/8/2024
Niobrara C, Original Hole	RDX	4	8,212.0	8,213.0	6/8/2024
Niobrara C, Original Hole	RDX	4	8,259.0	8,260.0	6/8/2024
Niobrara C, Original Hole	RDX	5	8,306.0	8,307.0	6/8/2024
Niobrara C, Original Hole	RDX	5	8,352.0	8,353.0	6/8/2024
Niobrara C, Original Hole	RDX	5	8,395.0	8,396.0	6/8/2024
Niobrara C, Original Hole	RDX	5	8,441.0	8,442.0	6/8/2024
Niobrara C, Original Hole	RDX	4	8,492.0	8,493.0	6/8/2024
Niobrara C, Original Hole	RDX	4	8,538.0	8,539.0	6/8/2024
Niobrara C, Original Hole	RDX	4	8,585.0	8,586.0	6/8/2024
Niobrara C, Original Hole	RDX	4	8,631.0	8,632.0	6/8/2024
Niobrara C, Original Hole	RDX	5	8,678.0	8,679.0	6/8/2024
Niobrara C, Original Hole	RDX	5	8,724.0	8,725.0	6/8/2024
Niobrara C, Original Hole	RDX	5	8,771.0	8,772.0	6/8/2024
Niobrara C, Original Hole	RDX	5	8,817.0	8,818.0	6/8/2024
Niobrara C, Original Hole	RDX	4	8,864.0	8,865.0	6/7/2024
Niobrara C, Original Hole	RDX	4	8,910.0	8,911.0	6/7/2024
Niobrara C, Original Hole	RDX	4	8,957.0	8,958.0	6/7/2024
Niobrara C, Original Hole	RDX	4	9,002.0	9,003.0	6/7/2024
Niobrara C, Original Hole	RDX	5	9,053.0	9,054.0	6/7/2024
Niobrara C, Original Hole	RDX	5	9,096.0	9,097.0	6/7/2024
Niobrara C, Original Hole	RDX	5	9,143.0	9,144.0	6/7/2024
Niobrara C, Original Hole	RDX	5	9,190.0	9,191.0	6/7/2024
Niobrara C, Original Hole	RDX	4	9,236.0	9,237.0	6/7/2024
Niobrara C, Original Hole	RDX	4	9,283.0	9,284.0	6/7/2024
Niobrara C, Original Hole	RDX	4	9,329.0	9,330.0	6/7/2024
Niobrara C, Original Hole	RDX	4	9,376.0	9,377.0	6/7/2024
Niobrara C, Original Hole	RDX	5	9,422.0	9,423.0	6/7/2024



P&A Wellbore For State

Well Name: Hen 18N

Original Hole [Land]		Perforation Data					
MD (ftK B)	Vertical schematic (actual)	Linked Zone	Explosive Type	Entered Shot Total	Top (ftKB)	Btm (ftKB)	Date
3,365.5		Niobrara C, Original Hole	RDX	5	9,469.0	9,470.0	6/7/2024
7,792.0		Niobrara C, Original Hole	RDX	5	9,515.0	9,516.0	6/7/2024
8,073.2		Niobrara C, Original Hole	RDX	5	9,562.0	9,563.0	6/7/2024
8,352.0		Niobrara C, Original Hole	RDX	4	9,608.0	9,609.0	6/7/2024
8,630.9		Niobrara C, Original Hole	RDX	4	9,655.0	9,656.0	6/7/2024
8,911.1		Niobrara C, Original Hole	RDX	4	9,701.0	9,702.0	6/7/2024
9,235.9		Niobrara C, Original Hole	RDX	4	9,746.0	9,747.0	6/7/2024
9,516.1		Niobrara C, Original Hole	RDX	5	9,791.0	9,792.0	6/7/2024
9,842.8		Niobrara C, Original Hole	RDX	5	9,843.0	9,844.0	6/7/2024
10,121.1		Niobrara C, Original Hole	RDX	5	9,887.0	9,888.0	6/7/2024
10,445.9		Niobrara C, Original Hole	RDX	5	9,934.0	9,935.0	6/7/2024
10,726.0		Niobrara C, Original Hole	RDX	4	9,980.0	9,981.0	6/6/2024
11,050.9		Niobrara C, Original Hole	RDX	4	10,027.0	10,028.0	6/6/2024
11,331.0		Niobrara C, Original Hole	RDX	4	10,074.0	10,075.0	6/6/2024
11,608.9		Niobrara C, Original Hole	RDX	4	10,120.0	10,121.0	6/6/2024
11,889.1		Niobrara C, Original Hole	RDX	5	10,167.0	10,168.0	6/6/2024
12,212.9		Niobrara C, Original Hole	RDX	5	10,213.0	10,214.0	6/6/2024
12,494.1		Niobrara C, Original Hole	RDX	5	10,260.0	10,261.0	6/6/2024
12,818.9		Niobrara C, Original Hole	RDX	5	10,306.0	10,307.0	6/6/2024
13,099.1		Niobrara C, Original Hole	RDX	4	10,353.0	10,354.0	6/6/2024
13,423.9		Niobrara C, Original Hole	RDX	4	10,399.0	10,400.0	6/6/2024
13,704.1		Niobrara C, Original Hole	RDX	4	10,446.0	10,447.0	6/6/2024
14,027.9		Niobrara C, Original Hole	RDX	4	10,491.0	10,492.0	6/6/2024
14,308.1		Niobrara C, Original Hole	RDX	5	10,536.0	10,537.0	6/6/2024
14,632.9		Niobrara C, Original Hole	RDX	5	10,586.0	10,587.0	6/6/2024
14,886.1		Niobrara C, Original Hole	RDX	5	10,632.0	10,633.0	6/6/2024
15,145.0		Niobrara C, Original Hole	RDX	5	10,678.0	10,679.0	6/6/2024
		Niobrara C, Original Hole	RDX	4	10,725.0	10,726.0	6/6/2024
		Niobrara C, Original Hole	RDX	4	10,771.0	10,772.0	6/6/2024
		Niobrara C, Original Hole	RDX	4	10,818.0	10,819.0	6/6/2024
		Niobrara C, Original Hole	RDX	4	10,864.0	10,865.0	6/6/2024
		Niobrara C, Original Hole	RDX	5	10,911.0	10,912.0	6/6/2024
		Niobrara C, Original Hole	RDX	5	10,958.0	10,959.0	6/6/2024
		Niobrara C, Original Hole	RDX	5	11,004.0	11,005.0	6/6/2024
		Niobrara C, Original Hole	RDX	5	11,051.0	11,052.0	6/6/2024
	Niobrara C, Original Hole	RDX	4	11,097.0	11,098.0	6/5/2024	
	Niobrara C, Original Hole	RDX	4	11,144.0	11,145.0	6/5/2024	
	Niobrara C, Original Hole	RDX	4	11,194.0	11,195.0	6/5/2024	
	Niobrara C, Original Hole	RDX	4	11,237.0	11,238.0	6/5/2024	
	Niobrara C, Original Hole	RDX	5	11,283.0	11,284.0	6/5/2024	
	Niobrara C, Original Hole	RDX	5	11,330.0	11,331.0	6/5/2024	
	Niobrara C, Original Hole	RDX	5	11,376.0	11,377.0	6/5/2024	
	Niobrara C, Original Hole	RDX	5	11,423.0	11,424.0	6/5/2024	
	Niobrara C, Original Hole	RDX	4	11,469.0	11,470.0	6/5/2024	
	Niobrara C, Original Hole	RDX	4	11,516.0	11,517.0	6/5/2024	
	Niobrara C, Original Hole	RDX	4	11,562.0	11,563.0	6/5/2024	
	Niobrara C, Original Hole	RDX	4	11,609.0	11,610.0	6/5/2024	
	Niobrara C, Original Hole	RDX	5	11,655.0	11,656.0	6/5/2024	
	Niobrara C, Original Hole	RDX	5	11,702.0	11,703.0	6/5/2024	
	Niobrara C, Original Hole	RDX	5	11,748.0	11,749.0	6/5/2024	
	Niobrara C, Original Hole	RDX	5	11,795.0	11,796.0	6/5/2024	
	Niobrara C, Original Hole	RDX	4	11,842.0	11,843.0	6/5/2024	
	Niobrara C, Original Hole	RDX	4	11,888.0	11,889.0	6/5/2024	
	Niobrara C, Original Hole	RDX	4	11,935.0	11,936.0	6/5/2024	
	Niobrara C, Original Hole	RDX	4	11,980.0	11,981.0	6/5/2024	
	Niobrara C, Original Hole	RDX	5	12,030.0	12,031.0	6/5/2024	
	Niobrara C, Original Hole	RDX	5	12,074.0	12,075.0	6/5/2024	
	Niobrara C, Original Hole	RDX	5	12,121.0	12,122.0	6/5/2024	
	Niobrara C, Original Hole	RDX	5	12,167.0	12,168.0	6/5/2024	
	Niobrara C, Original Hole	RDX	4	12,213.0	12,214.0	6/4/2024	



P&A Wellbore For State

Well Name: Hen 18N

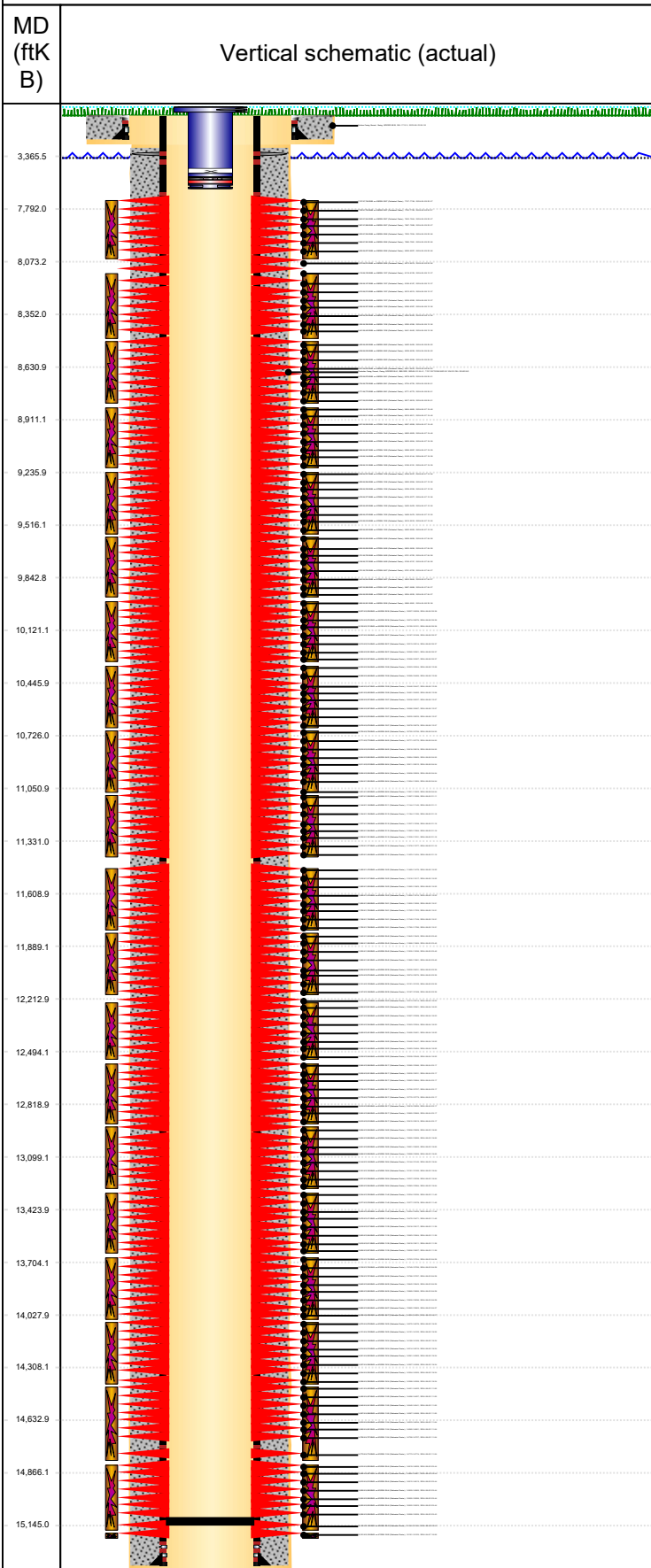
Original Hole [Land]		Perforation Data					
MD (ftK B)	Vertical schematic (actual)	Linked Zone	Explosive Type	Entered Shot Total	Top (ftKB)	Btm (ftKB)	Date
3,365.5		Niobrara C, Original Hole	RDX	4	12,260.0	12,261.0	6/4/2024
7,792.0		Niobrara C, Original Hole	RDX	4	12,307.0	12,308.0	6/4/2024
8,073.2		Niobrara C, Original Hole	RDX	4	12,353.0	12,354.0	6/4/2024
8,352.0		Niobrara C, Original Hole	RDX	5	12,400.0	12,401.0	6/4/2024
8,630.9		Niobrara C, Original Hole	RDX	5	12,446.0	12,447.0	6/4/2024
8,911.1		Niobrara C, Original Hole	RDX	5	12,493.0	12,494.0	6/4/2024
9,235.9		Niobrara C, Original Hole	RDX	5	12,539.0	12,540.0	6/4/2024
9,516.1		Niobrara C, Original Hole	RDX	4	12,585.0	12,586.0	6/4/2024
9,842.8		Niobrara C, Original Hole	RDX	4	12,630.0	12,631.0	6/4/2024
10,121.1		Niobrara C, Original Hole	RDX	4	12,683.0	12,684.0	6/4/2024
10,445.9		Niobrara C, Original Hole	RDX	4	12,726.0	12,727.0	6/4/2024
10,726.0		Niobrara C, Original Hole	RDX	5	12,772.0	12,773.0	6/4/2024
11,050.9		Niobrara C, Original Hole	RDX	5	12,819.0	12,820.0	6/4/2024
11,331.0		Niobrara C, Original Hole	RDX	5	12,865.0	12,866.0	6/4/2024
11,608.9		Niobrara C, Original Hole	RDX	5	12,912.0	12,913.0	6/4/2024
11,889.1		Niobrara C, Original Hole	RDX	4	12,958.0	12,959.0	6/3/2024
12,212.9		Niobrara C, Original Hole	RDX	4	13,005.0	13,006.0	6/3/2024
12,494.1		Niobrara C, Original Hole	RDX	4	13,051.0	13,052.0	6/3/2024
12,818.9		Niobrara C, Original Hole	RDX	4	13,098.0	13,099.0	6/3/2024
13,099.1		Niobrara C, Original Hole	RDX	5	13,144.0	13,145.0	6/3/2024
13,423.9		Niobrara C, Original Hole	RDX	5	13,191.0	13,192.0	6/3/2024
13,704.1		Niobrara C, Original Hole	RDX	5	13,237.0	13,238.0	6/3/2024
14,027.9		Niobrara C, Original Hole	RDX	5	13,283.0	13,284.0	6/3/2024
14,308.1		Niobrara C, Original Hole	RDX	4	13,334.0	13,335.0	6/3/2024
14,632.9		Niobrara C, Original Hole	RDX	4	13,377.0	13,378.0	6/3/2024
14,912.0		Niobrara C, Original Hole	RDX	4	13,424.0	13,425.0	6/3/2024
15,145.0		Niobrara C, Original Hole	RDX	4	13,470.0	13,471.0	6/3/2024
		Niobrara C, Original Hole	RDX	5	13,516.0	13,517.0	6/3/2024
		Niobrara C, Original Hole	RDX	5	13,563.0	13,564.0	6/3/2024
		Niobrara C, Original Hole	RDX	5	13,610.0	13,611.0	6/3/2024
		Niobrara C, Original Hole	RDX	5	13,656.0	13,657.0	6/3/2024
		Niobrara C, Original Hole	RDX	4	13,703.0	13,704.0	6/3/2024
		Niobrara C, Original Hole	RDX	4	13,749.0	13,750.0	6/3/2024
		Niobrara C, Original Hole	RDX	4	13,796.0	13,797.0	6/3/2024
		Niobrara C, Original Hole	RDX	4	13,842.0	13,843.0	6/3/2024
		Niobrara C, Original Hole	RDX	5	13,889.0	13,890.0	6/3/2024
		Niobrara C, Original Hole	RDX	5	13,935.0	13,936.0	6/3/2024
		Niobrara C, Original Hole	RDX	5	13,982.0	13,983.0	6/3/2024
		Niobrara C, Original Hole	RDX	5	14,028.0	14,029.0	6/3/2024
		Niobrara C, Original Hole	RDX	4	14,075.0	14,076.0	6/2/2024
	Niobrara C, Original Hole	RDX	4	14,121.0	14,122.0	6/2/2024	
	Niobrara C, Original Hole	RDX	4	14,168.0	14,169.0	6/2/2024	
	Niobrara C, Original Hole	RDX	4	14,214.0	14,215.0	6/2/2024	
	Niobrara C, Original Hole	RDX	5	14,261.0	14,262.0	6/2/2024	
	Niobrara C, Original Hole	RDX	5	14,307.0	14,308.0	6/2/2024	
	Niobrara C, Original Hole	RDX	5	14,354.0	14,355.0	6/2/2024	
	Niobrara C, Original Hole	RDX	5	14,398.0	14,399.0	6/2/2024	
	Niobrara C, Original Hole	RDX	4	14,451.0	14,452.0	6/2/2024	
	Niobrara C, Original Hole	RDX	4	14,496.0	14,497.0	6/2/2024	
	Niobrara C, Original Hole	RDX	4	14,540.0	14,541.0	6/2/2024	
	Niobrara C, Original Hole	RDX	4	14,587.0	14,588.0	6/2/2024	
	Niobrara C, Original Hole	RDX	5	14,633.0	14,634.0	6/2/2024	
	Niobrara C, Original Hole	RDX	5	14,680.0	14,681.0	6/2/2024	
	Niobrara C, Original Hole	RDX	5	14,726.0	14,727.0	6/2/2024	
	Niobrara C, Original Hole	RDX	5	14,773.0	14,774.0	6/2/2024	
	Niobrara C, Original Hole	RDX	4	14,819.0	14,820.0	6/2/2024	
	Niobrara C, Original Hole	RDX	4	14,866.0	14,867.0	6/2/2024	
	Niobrara C, Original Hole	RDX	4	14,912.0	14,913.0	6/2/2024	
	Niobrara C, Original Hole	RDX	4	14,959.0	14,960.0	6/2/2024	
	Niobrara C, Original Hole	RDX	5	15,005.0	15,006.0	6/2/2024	



P&A Wellbore For State

Well Name: Hen 18N

Original Hole [Land]



Perforation Data

Linked Zone	Explosive Type	Entered Shot Total	Top (ftKB)	Btm (ftKB)	Date
Niobrara C, Original Hole	RDX	5	15,052.0	15,053.0	6/2/2024
Niobrara C, Original Hole	RDX	5	15,098.0	15,099.0	6/2/2024
Niobrara C, Original Hole	RDX	5	15,145.0	15,146.0	6/2/2024
Niobrara C, Original Hole		12	15,191.0	15,193.0	4/7/2024

Stim/Frac Stage

Zone	Start Date	Top (ftKB)	Btm (ftKB)
Niobrara C, Original Hole	6/9/2024	7,747.2	8,072.9
Niobrara C, Original Hole	6/9/2024	8,119.4	8,445.1
Niobrara C, Original Hole	6/8/2024	8,492.0	8,818.0
Niobrara C, Original Hole	6/8/2024	8,864.0	9,191.0
Niobrara C, Original Hole	6/7/2024	9,236.0	9,563.0
Niobrara C, Original Hole	6/7/2024	9,608.0	9,935.0
Niobrara C, Original Hole	6/7/2024	9,980.0	10,307.0
Niobrara C, Original Hole	6/6/2024	10,353.0	10,679.0
Niobrara C, Original Hole	6/6/2024	10,725.0	11,052.0
Niobrara C, Original Hole	6/6/2024	11,097.0	11,424.0
Niobrara C, Original Hole	6/5/2024	11,469.0	11,796.0
Niobrara C, Original Hole	6/5/2024	11,842.0	12,168.0
Niobrara C, Original Hole	6/5/2024	12,214.0	12,540.0
Niobrara C, Original Hole	6/4/2024	12,585.0	12,913.0
Niobrara C, Original Hole	6/4/2024	12,958.0	13,284.0
Niobrara C, Original Hole	6/3/2024	13,334.0	13,657.0
Niobrara C, Original Hole	6/3/2024	13,703.0	14,029.0
Niobrara C, Original Hole	6/3/2024	14,075.0	14,399.0
Niobrara C, Original Hole	6/2/2024	14,451.0	14,774.7
Niobrara C, Original Hole	6/2/2024	14,819.0	15,146.0
Niobrara C, Original Hole	6/2/2024	15,191.0	15,193.0

Other In Hole

Run Date	Des	Make	OD (in)	Top (ftKB)	Btm (ftKB)

Logs

Date	Type	Depth Top (MD) (ftKB)	Btm (ftKB)

Wellbore Plug Back Total Depths

Date	Type	Com	PBTD (ftKB)
6/21/2024	No Tag Established	COIL TUBING 15,138'	15,138