

**RADIAL CEMENT BOND  
GAMMA RAY C.C.L./V.D.L.  
LOG**

Company **OCCIDENTAL PETROLEUM INC.**  
 Well **A & W 21-31**  
 Field **WATTENBERG**  
 County **WELD** State **COLORADO**

Location **API# 05-123-30503  
SEC 21 TWN 4N RNG 66W  
SE/NE**

Permanent Datum **GROUND LEVEL** Elevation **4767'**  
 Log Measured From **KELLY BUSHING**  
 Drilling Measured From **KELLY BUSHING**

Other Services **NONE**

|                        |              |
|------------------------|--------------|
| Date                   | 15 MAY, 2024 |
| Run Number             | ONE          |
| Depth Driller          | 8055'        |
| Depth Logger           | 810'         |
| Bottom Logged Interval | 807'         |
| Top Log Interval       | SURFACE      |
| Casing Size            | 4.5"         |
| Type Fluid             | WATER        |
| Density / Viscosity    | N/A          |
| Max. Recorded Temp.    | N/A          |
| Estimated Cement Top   | NO TOC       |
| Time Well Ready        | R.O.A.       |
| Time Logger on Bottom  | 1:30P.M.     |
| Equipment Number       | 200128       |
| Location               | STERLING, CO |
| Recorded By            | GARDNER      |
| Witnessed By           | LUIS MORALES |

| Borehole Record |     |      | Tubing Record |      |        |      |    |
|-----------------|-----|------|---------------|------|--------|------|----|
| Run Number      | Bit | From | To            | Size | Weight | From | To |
|                 |     |      |               |      |        |      |    |
|                 |     |      |               |      |        |      |    |
|                 |     |      |               |      |        |      |    |

|                   |        |        |     |        |
|-------------------|--------|--------|-----|--------|
| Casing Record     | Size   | Wgt/Ft | Top | Bottom |
| Surface String    | 8.625" | 24#    | 0'  | 787'   |
| Prot. String      |        |        |     |        |
| Production String | 4.5"   | 11.6#  | 0'  | 8045'  |
| Liner             |        |        |     |        |

<<< Fold Here >>>

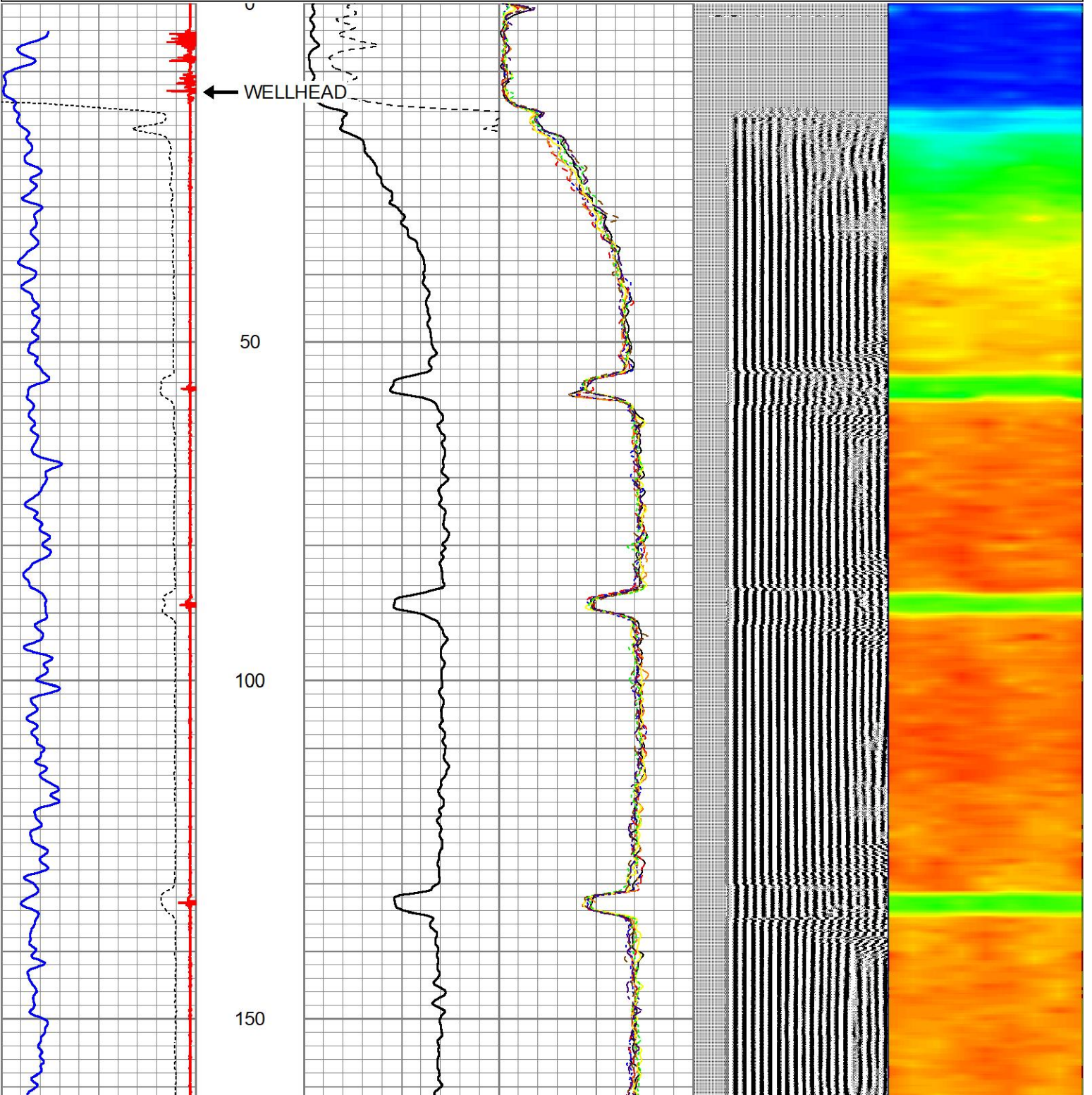
All interpretations are opinions based on inferences from electrical or other measurements and we cannot and do not guarantee the accuracy or correctness of any interpretation, and we shall not, except in the case of gross or willful negligence on our part, be liable or responsible for any loss, costs, damages, or expenses incurred or sustained by anyone resulting from any interpretation made by any of our officers, agents or employees. These interpretations are also subject to our general terms and conditions set out in our current Price Schedule.

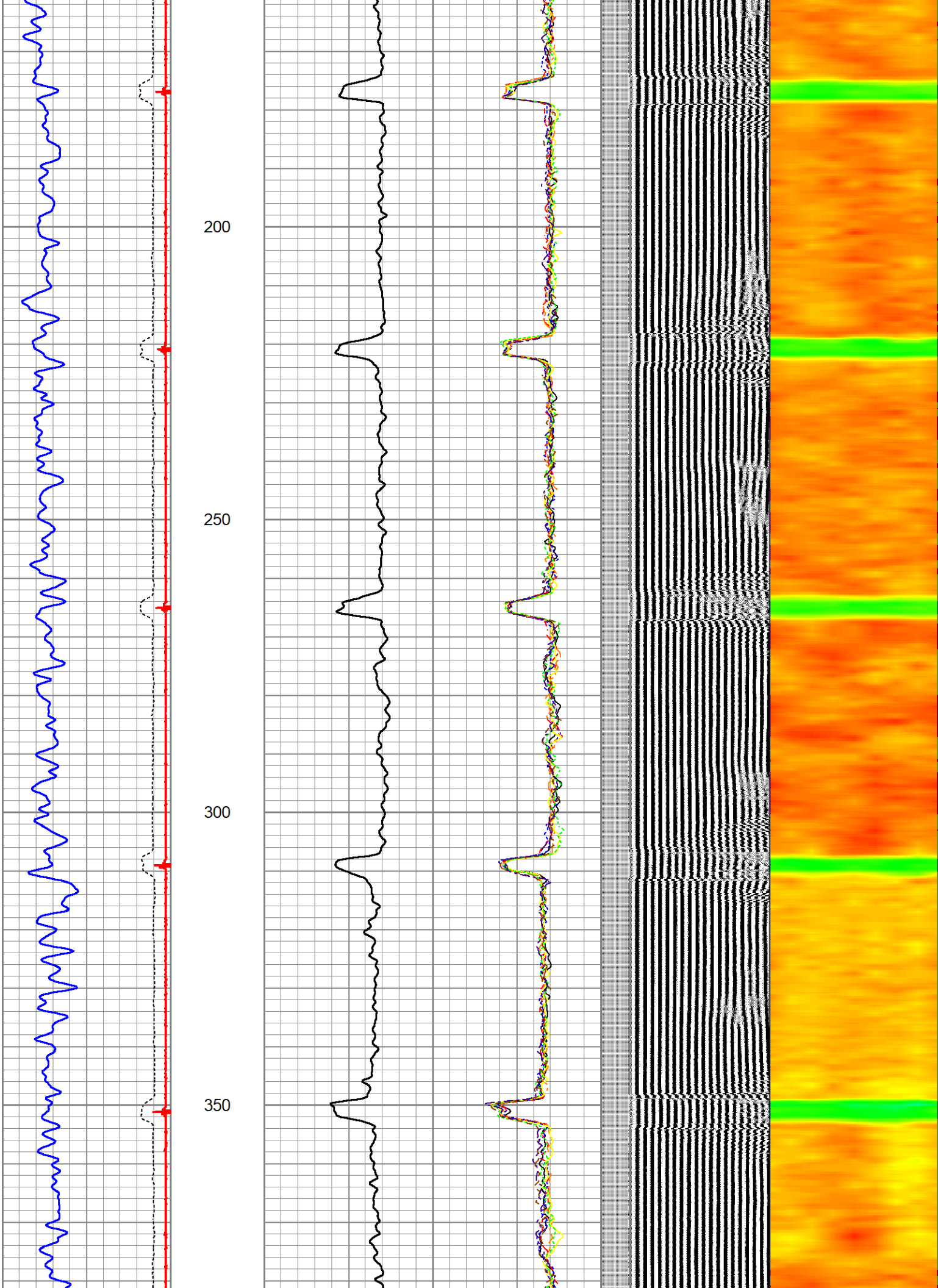
**Comments**

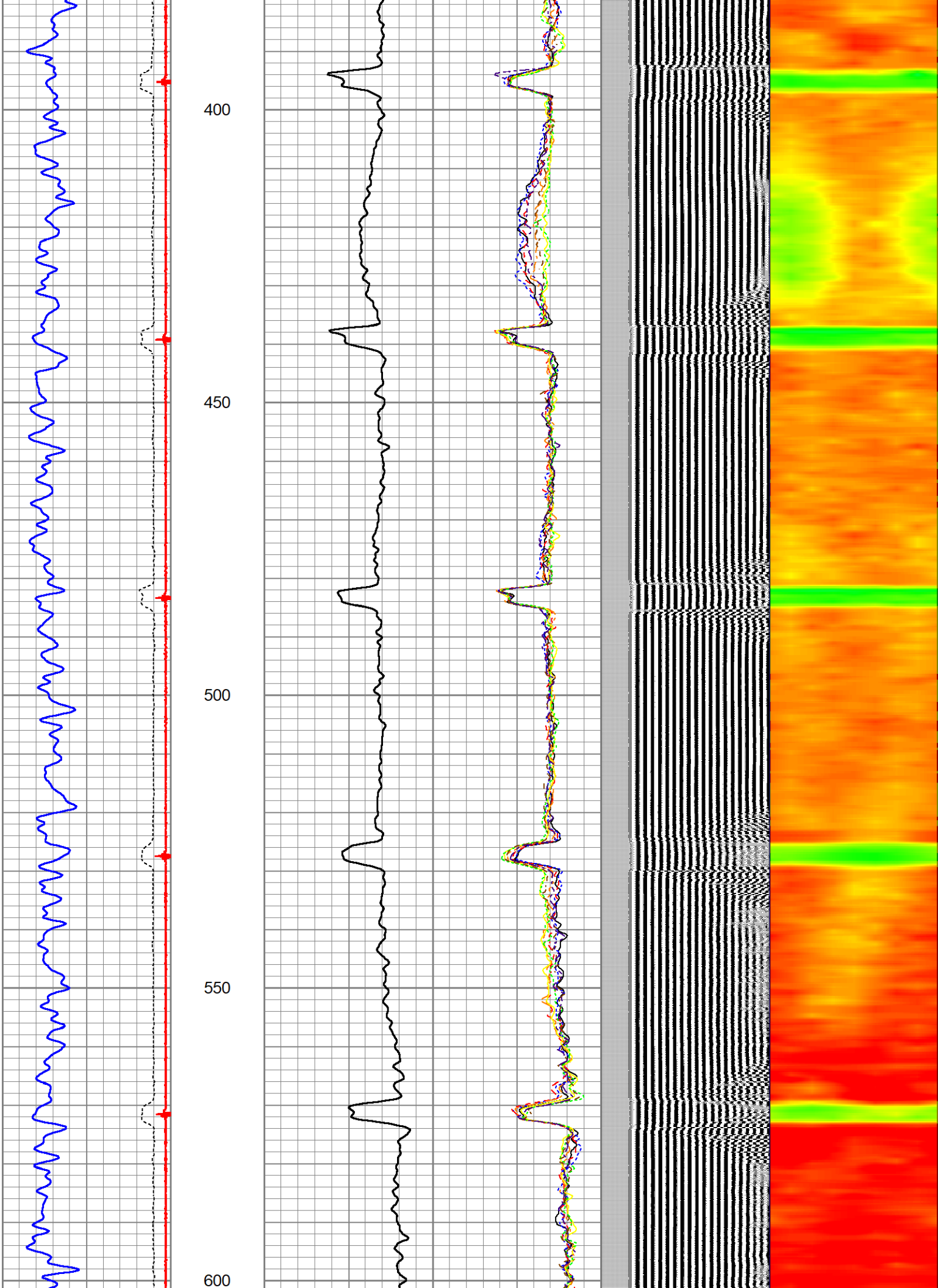
**LOG NOT CORRELATED!!  
 LOG RAN WITH 15' K.B.  
 MECHANICAL CUT @ 774'  
 MECHANICAL CUT @ 780'**

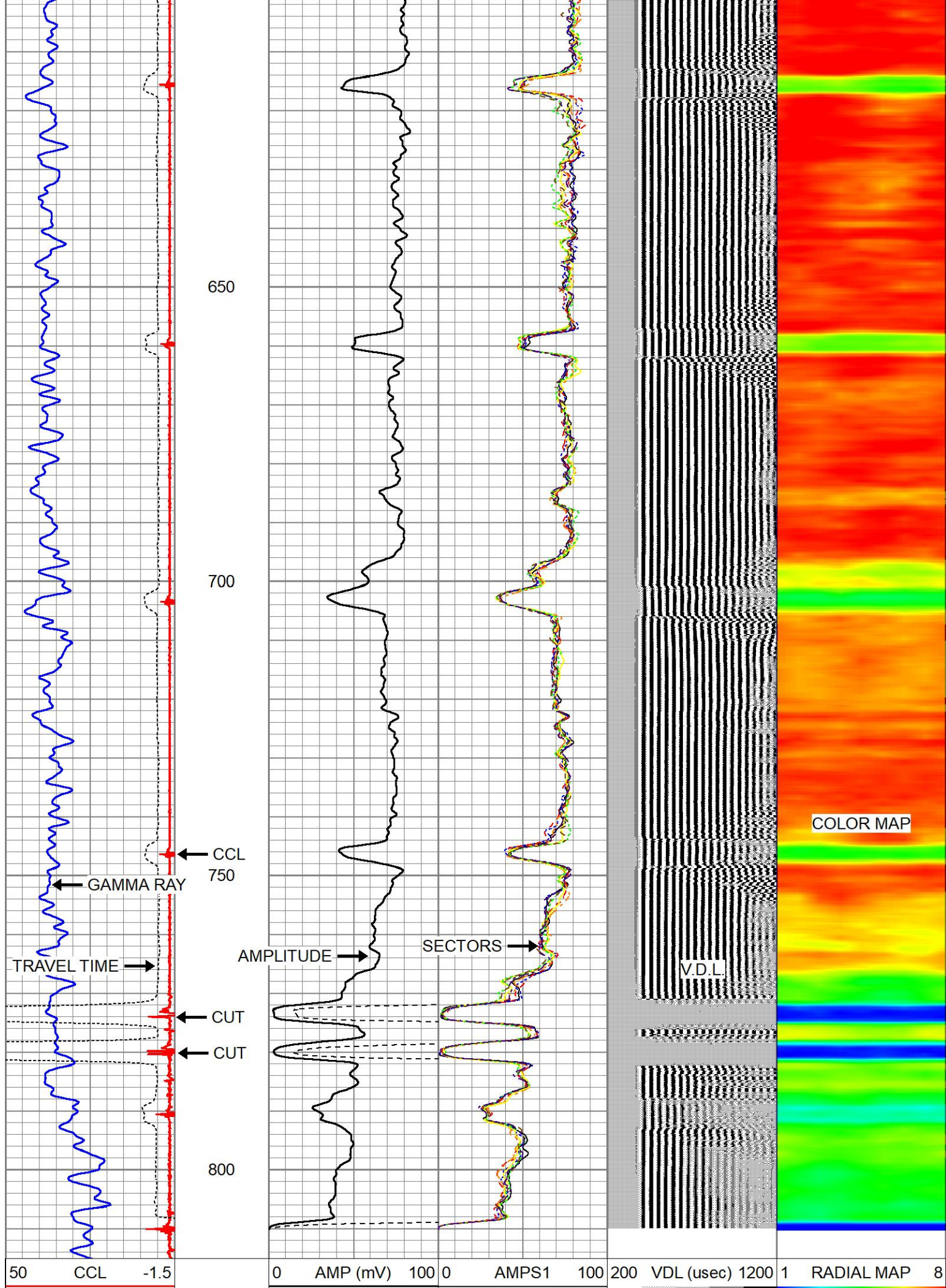
Database File a & w 21-31 rcbl .db  
 Dataset Pathname pass5  
 Presentation Format zwag (2)  
 Dataset Creation Wed May 15 13:30:33 2024  
 Charted by Depth in Feet scaled 1:240

|     |            |      |                |          |     |   |       |     |     |            |      |   |            |   |
|-----|------------|------|----------------|----------|-----|---|-------|-----|-----|------------|------|---|------------|---|
| 50  | CCL        | -1.5 | 0              | AMP (mV) | 100 | 0 | AMPS1 | 100 | 200 | VDL (usec) | 1200 | 1 | RADIAL MAP | 8 |
| 0   | GR (GAPI)  | 150  | AMPLIFIED AMP3 |          |     | 0 | AMPS2 | 100 |     |            |      |   |            |   |
| 340 | TT3 (usec) | 244  | 0              | (mV)     | 20  | 0 | AMPS3 | 100 |     |            |      |   |            |   |
|     |            |      |                |          |     | 0 | AMPS4 | 100 |     |            |      |   |            |   |
|     |            |      |                |          |     | 0 | AMPS5 | 100 |     |            |      |   |            |   |
|     |            |      |                |          |     | 0 | AMPS6 | 100 |     |            |      |   |            |   |
|     |            |      |                |          |     | 0 | AMPS7 | 100 |     |            |      |   |            |   |
|     |            |      |                |          |     | 0 | AMPS8 | 100 |     |            |      |   |            |   |









|                    |                |   |       |     |
|--------------------|----------------|---|-------|-----|
| GR (GAPI) 150      | AMPLIFIED AMP3 | 0 | AMPS2 | 100 |
| 340 TT3 (usec) 244 | 0 (mV) 20      | 0 | AMPS3 | 100 |
|                    |                | 0 | AMPS4 | 100 |
|                    |                | 0 | AMPS5 | 100 |
|                    |                | 0 | AMPS6 | 100 |
|                    |                | 0 | AMPS7 | 100 |
|                    |                | 0 | AMPS8 | 100 |

**Calibration Report**

Database File      a & w 21-31 rcbl .db  
Dataset Pathname    pass5  
Dataset Creation    Wed May 15 13:30:33 2024

**Gamma Ray Calibration Report**

Type / Serial:                      Probe275dig / 101010

| SHOP CALIBRATION           |             | Mon Feb 26 13:29:31 2024 |        |     |          |
|----------------------------|-------------|--------------------------|--------|-----|----------|
|                            | Counts/Sec. | Gain                     | Offset | Jig | Units    |
| Background                 | 0.0         |                          |        |     | cps      |
| Calibrator                 | 1.0         |                          |        |     | cps      |
|                            |             | 0.6000                   |        |     | GAPI/cps |
| PRIMARY VERIFICATION       |             |                          |        |     |          |
| Background                 | 0.0         |                          |        |     | cps      |
| Calibrator                 | 0.0         |                          |        |     | cps      |
| Difference                 |             |                          |        | 0.0 | GAPI     |
| BEFORE SURVEY VERIFICATION |             |                          |        |     |          |
| Background                 | 0.0         |                          |        |     | cps      |
| Calibrator                 | 0.0         |                          |        |     | cps      |
| Difference                 |             |                          |        | 0.0 | GAPI     |
| AFTER SURVEY VERIFICATION  |             |                          |        |     |          |
| Background                 | 0.0         |                          |        |     | cps      |
| Calibrator                 | 0.0         |                          |        |     | cps      |
| Difference                 |             |                          |        | 0.0 | GAPI     |

**Segmented Cement Bond Log Calibration Report**

Serial Number:                      101020  
Tool Model:                            Probe

Calibration Casing Diameter:      4.500                      in  
Calibration Depth:                    605.242                    ft

Master Calibration, performed Wed May 15 13:27:43 2024:

|     | Raw (v) |       | Calibrated (mv) |        | Results |        |
|-----|---------|-------|-----------------|--------|---------|--------|
|     | Zero    | Cal   | Zero            | Cal    | Gain    | Offset |
| 3'  | 0.002   | 0.633 | 0.800           | 81.196 | 127.525 | 0.520  |
| CAL | 0.002   | 0.838 |                 |        |         |        |
| 5'  | 0.002   | 0.565 | 0.800           | 81.196 | 142.846 | 0.540  |
| SUM |         |       |                 |        |         |        |
| S1  | 0.002   | 0.583 | 0.000           | 81.000 | 139.616 | -0.329 |
| S2  | 0.002   | 0.656 | 0.000           | 81.000 | 123.776 | -0.258 |
| S3  | 0.002   | 0.691 | 0.000           | 81.000 | 117.641 | -0.238 |

|    |       |       |       |        |         |        |
|----|-------|-------|-------|--------|---------|--------|
| S4 | 0.002 | 0.691 | 0.000 | 81.000 | 117.603 | -0.225 |
| S5 | 0.002 | 0.659 | 0.000 | 81.000 | 123.254 | -0.248 |
| S6 | 0.002 | 0.621 | 0.000 | 81.000 | 130.832 | -0.244 |
| S7 | 0.002 | 0.604 | 0.000 | 81.000 | 134.578 | -0.273 |
| S8 | 0.002 | 0.600 | 0.000 | 81.000 | 135.477 | -0.251 |

Internal Reference Calibration, performed Tue Feb 12 13:45:01 2013:

|     | Raw (v) |       | Calibrated (v) |       | Results |        |
|-----|---------|-------|----------------|-------|---------|--------|
|     | Zero    | Cal   | Zero           | Cal   | Gain    | Offset |
| CAL | 0.000   | 0.000 | 0.002          | 0.838 | 1.000   | 0.000  |

Air Zero Calibration, performed Thu Feb 21 14:40:31 2013:

|     | Raw (v) |  | Calibrated (v) |  | Results |  |
|-----|---------|--|----------------|--|---------|--|
|     | Zero    |  | Zero           |  | Offset  |  |
| 3'  | 0.000   |  | 0.000          |  | 0.000   |  |
| 5'  | 0.000   |  | 0.000          |  | 0.000   |  |
| SUM |         |  |                |  |         |  |
| S1  | 0.000   |  | 0.000          |  | 0.000   |  |
| S2  | 0.000   |  | 0.000          |  | 0.000   |  |
| S3  | 0.000   |  | 0.000          |  | 0.000   |  |
| S4  | 0.000   |  | 0.000          |  | 0.000   |  |
| S5  | 0.000   |  | 0.000          |  | 0.000   |  |
| S6  | 0.000   |  | 0.000          |  | 0.000   |  |
| S7  | 0.000   |  | 0.000          |  | 0.000   |  |
| S8  | 0.000   |  | 0.000          |  | 0.000   |  |

## Log Variables

DatabaseC:\ProgramData\Warrior\Data\w 21-31 rcbl .db  
Dataset field/well/run1/pass5/\_vars\_

### Top - Bottom

|                       |                        |                       |                     |                           |                     |                      |                         |
|-----------------------|------------------------|-----------------------|---------------------|---------------------------|---------------------|----------------------|-------------------------|
| BOREID<br>in<br>8.625 | BOTTEMP<br>degF<br>100 | CASEOD<br>in<br>4.5   | CASETHCK<br>in<br>0 | CASEWGHT<br>lb/ft<br>11.6 | MAXAMPL<br>mV<br>81 | MINAMPL<br>mV<br>0.7 | MINATTN<br>db/ft<br>0.8 |
| PERFS<br>No           | PPT<br>usec<br>357     | SRFTEMP<br>degF<br>66 | TDEPTH<br>ft<br>0   |                           |                     |                      |                         |

### Variable Description

BOREID : Borehole I.D.

BOTTEMP : Bottom Hole Temperature

CASEOD : Casing O.D.

CASETHCK : Casing Thickness

CASEWGHT : Casing Weight

MAXAMPL : Maximum Amplitude

MINAMPL : Minimum Amplitude

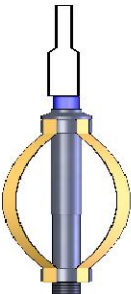
MINATTN : Minimum Attenuation

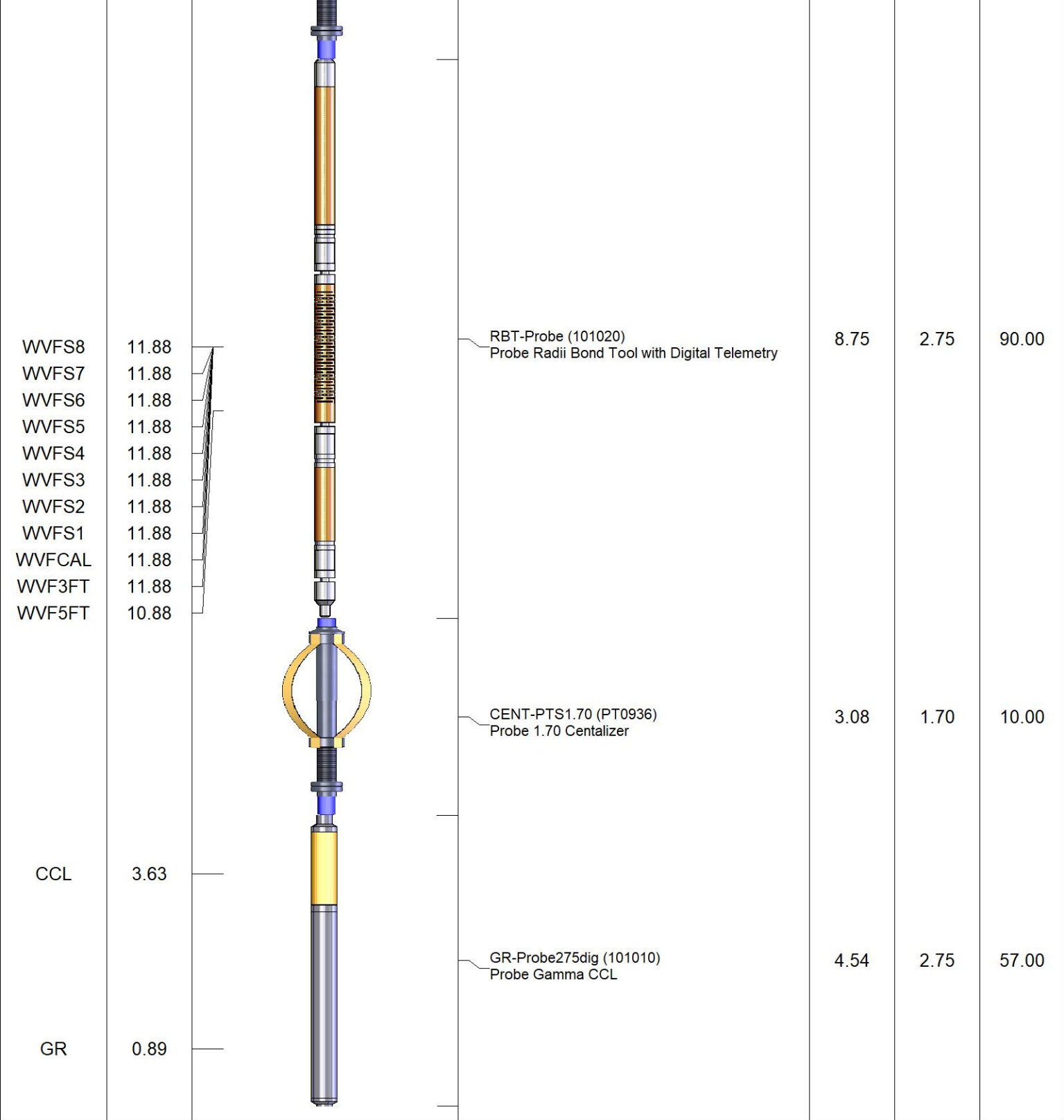
PERFS : Perforation Flag

PPT : Predicted Pipe Time

SRFTEMP : Surface Temperature

TDEPTH : Total Depth

| Sensor | Offset (ft) | Schematic   | Description                                    | Length (ft) | O.D. (in) | Weight (lb) |
|--------|-------------|---|--|-------------|-----------|-------------|
|        |             |  | CHD-STNDRD<br>Standard Cable Head              | 1.00        | 1.69      | 10.00       |
|        |             |   | CENT-PTS1.70 (PT0934)<br>Probe 1.70 Centalizer | 3.08        | 1.70      | 10.00       |



Dataset: a & w 21-31 rcbl .db: field/well/run1/pass5  
 Total length: 20.46 ft  
 Total weight: 177.00 lb  
 O.D.: 2.75 in