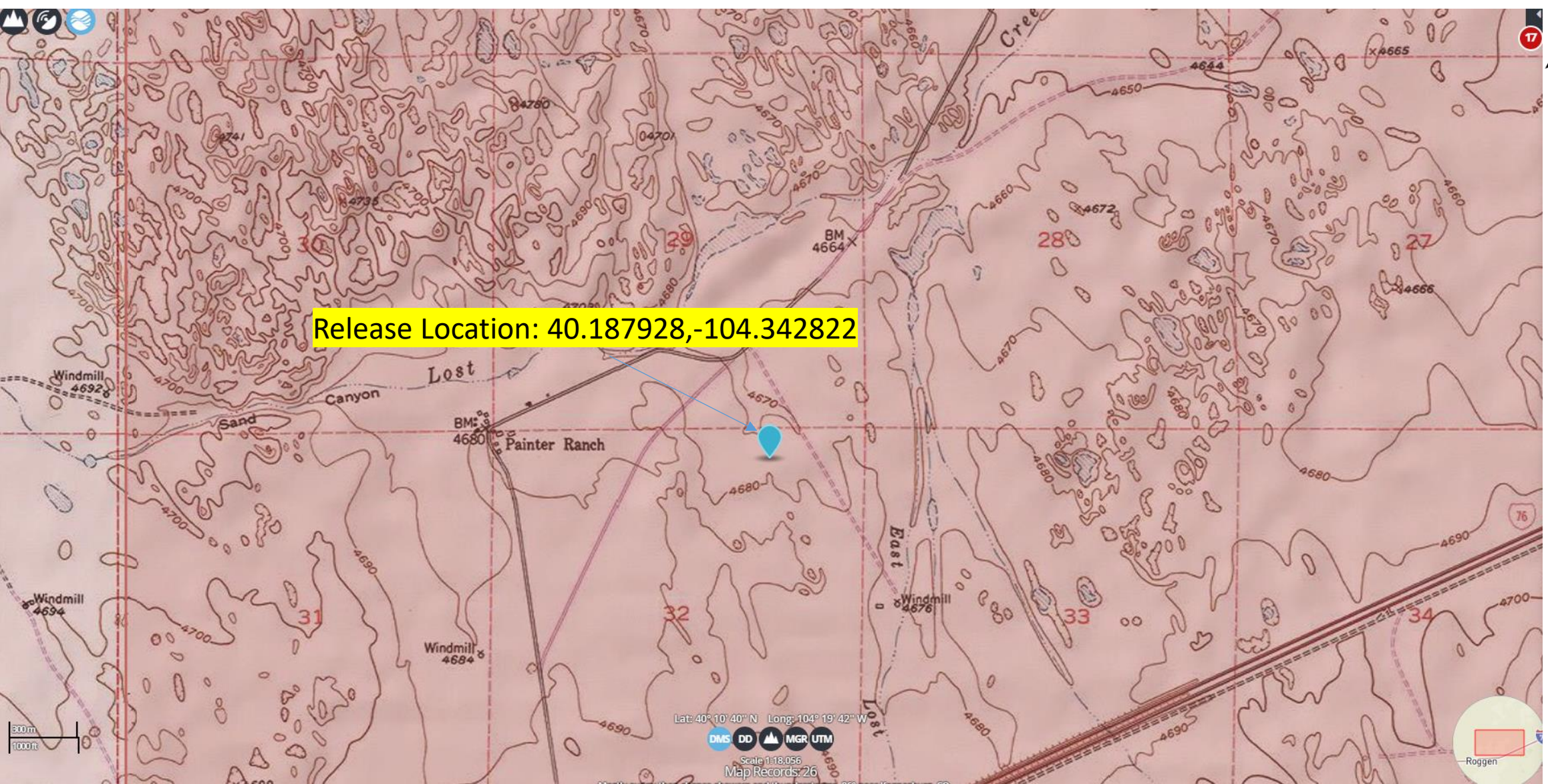




Release Location: 40.187928,-104.342822



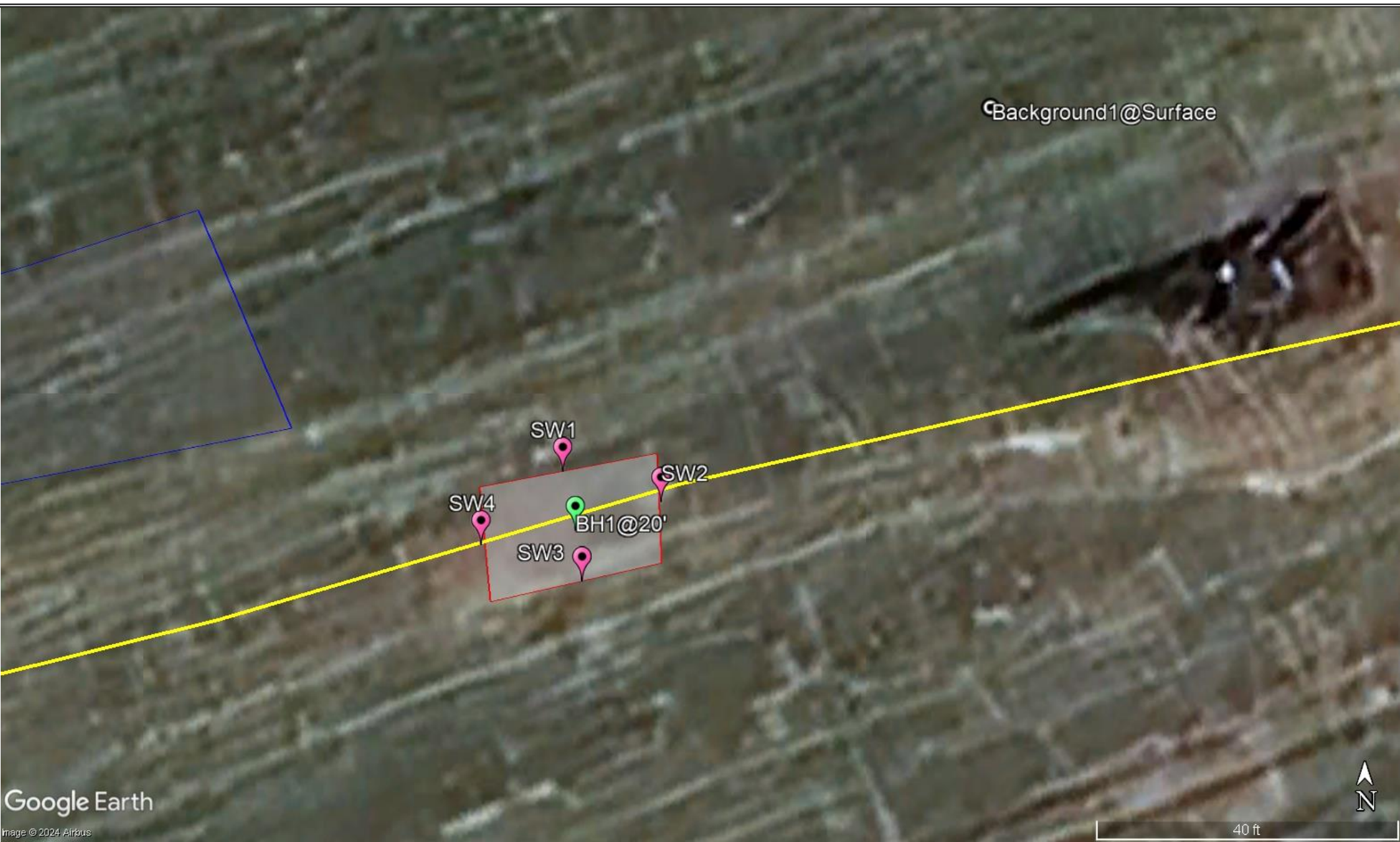
Date:	August 2024
Designed By:	KPK
Drawn By:	CC

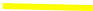
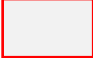
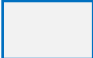
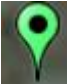




K.P. Kauffman Company, Inc.
1700 Lincoln St. Suite 4550
Denver CO, 80202

K.P. Kauffman Company, Inc.
Lost Creek State 1-32 Flowline
NENE, Section 32, Township 3 North, Range 62 West
Weld County, Colorado

Topographic Map



-  KPK Flowline
-  Excavation Extent
-  Soil Stockpile
-  Bottom Hole Sample
-  Sidewall Sample
-  Background Sample

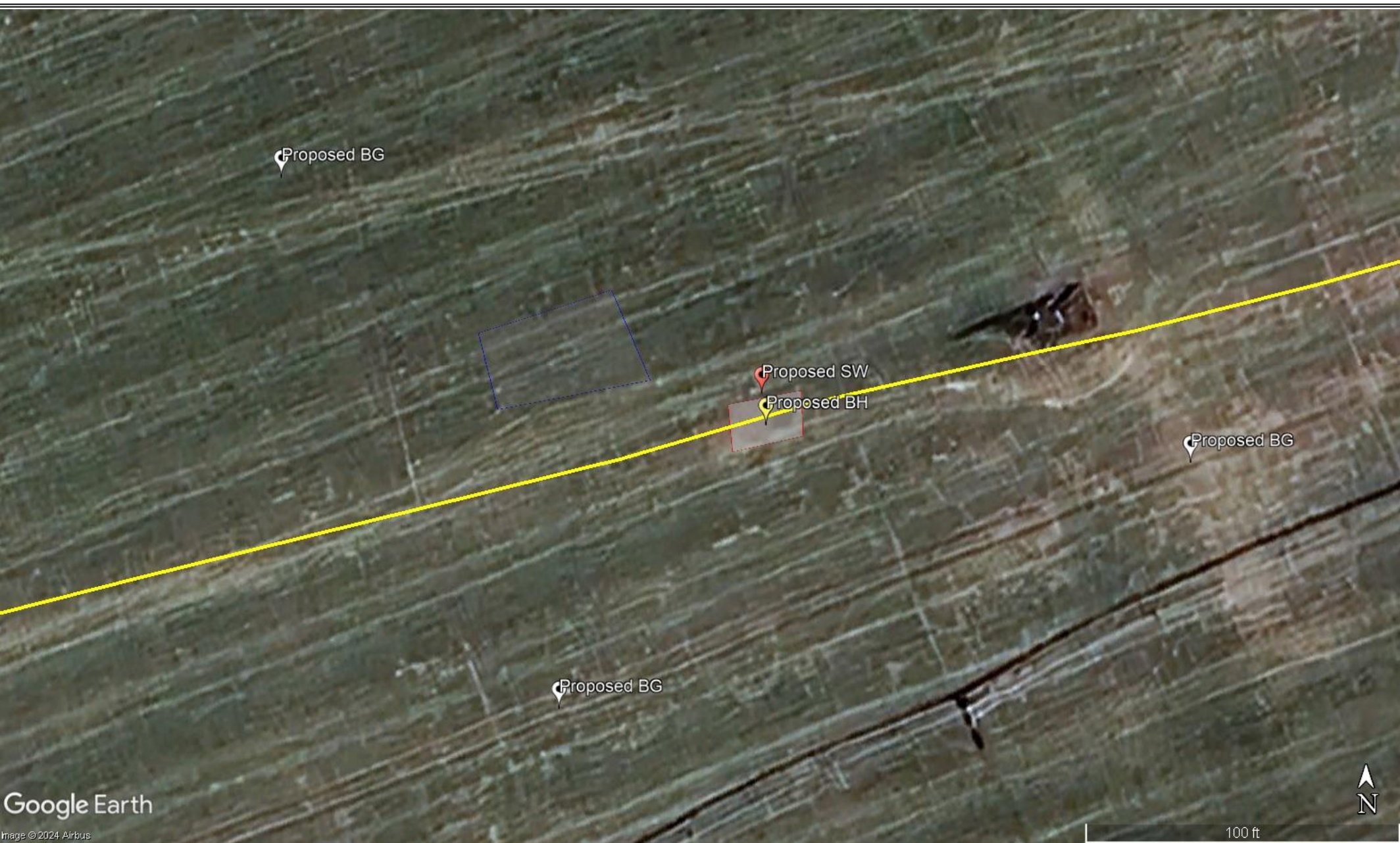
Date:	August 2024
Designed By:	KPK
Drawn By:	CC

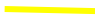

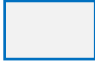

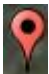



K.P. Kauffman Company, Inc.
1700 Lincoln St. Suite 4550
Denver CO, 80202

K.P. Kauffman Company, Inc.
Lost Creek State 1-32 Flowline
NENE, Section 32, Township 3 North, Range 62 West
Weld County, Colorado

Soil Sample Location Map



-  KPK Flowline
-  Excavation Extent
-  Soil Stockpile
-  Proposed Background Sample Location
-  Proposed Sidewall Sample Location
-  Proposed Bottom Hole Sample Location

*Note: Background sample locations will be sampled at 5' and 15' bgs

Date:	August 2024
Designed By:	KPK
Drawn By:	CC



K.P. Kauffman Company, Inc.
1700 Lincoln St. Suite 4550
Denver CO, 80202

K.P. Kauffman Company, Inc.
Lost Creek State 1-32 Flowline
NENE, Section 32, Township 3 North, Range 62 West
Weld County, Colorado

Proposed Soil Sample Location Map