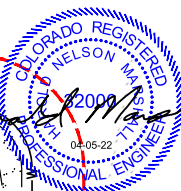


BMP LEGEND:
 ST - SEDIMENT TRAP
 W - WATTLE
 --- OIL & GAS LOCATION (LOD)
 --- WORKING PAD SURFACE

Sed. Trap #3
 Vol. = 7,680 cu.ft.
 L= 80', W=40', D=2.4'

Sed. Trap #1
 Vol. = 5,415 cu.ft.
 L= 75', W=38', D=1.9'

Sed. Trap #2
 Vol. = 8,960 cu.ft.
 L= 80', W=40', D=2.8'



FINISHED GRADE ELEVATION = 6618.1'

REV: 7 04-05-22 M.D. (EQUIPMENT CHANGES)

- NOTES:**
- Rounded corners shown at 35' radius.
 - Construct diversion ditches as needed.
 - Contours shown at 2' intervals.
 - Cut/Fill slopes 1 1/2:1 (Typ. except where noted).
 - Working Pad Surface Varies Overall.
 - The Cut and Fill slopes will be hydro-mulched following site construction.

TEP Rocky Mountain LLC

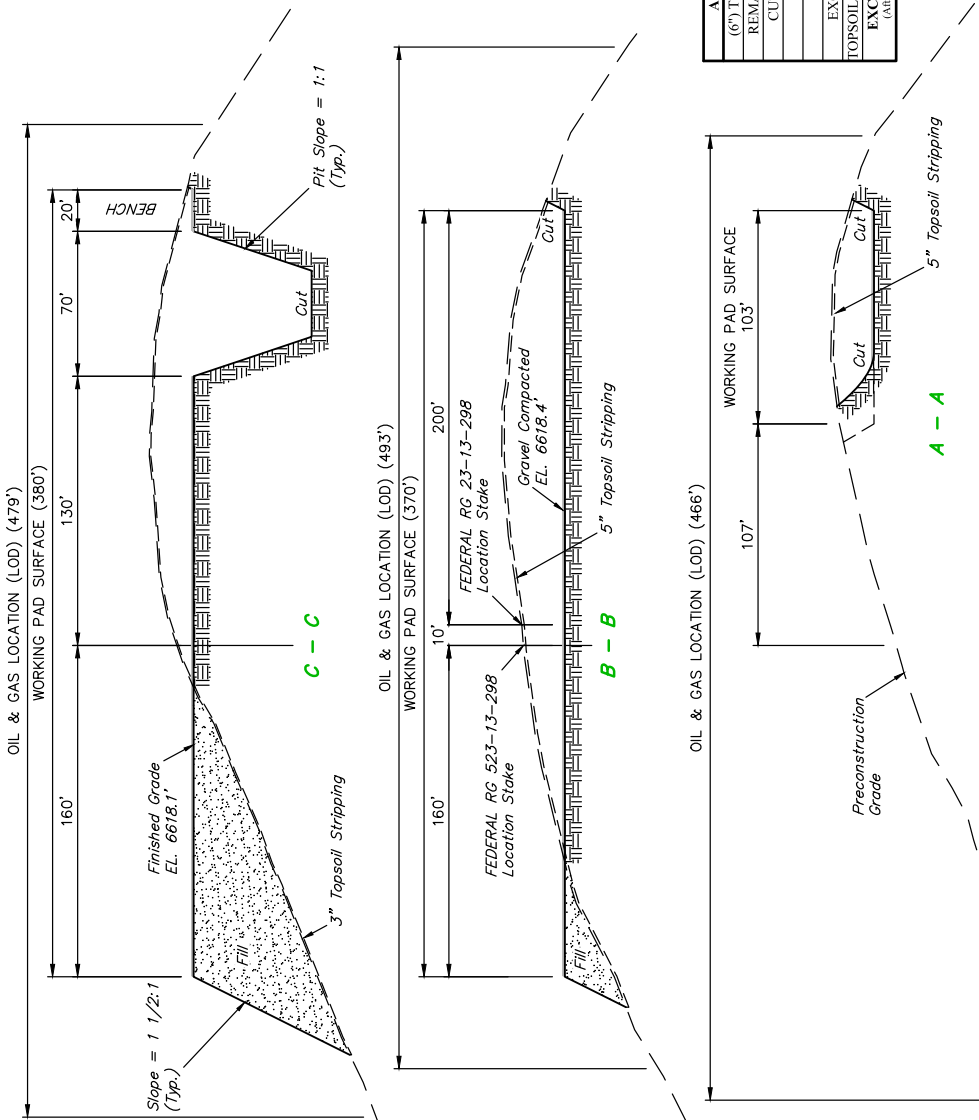
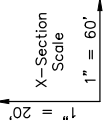
FEDERAL RG 11-13-298 PAD
 LOT 4, SECTION 13, T2S, R98W, 6th P.M.
 RIO BLANCO COUNTY, COLORADO



UELS, LLC
 Corporate Office * 85 South 200 East
 Vernal, UT 84078 * (435) 789-1017

SURVEYED BY	BART HUNTING	07-21-21	SCALE
DRAWN BY	T.L.L.	07-23-21	1" = 60'

CONSTRUCTION LAYOUT-PLAN VIEW



APPROXIMATE SURFACE DISTURBANCE AREAS		
WORKING PAD SURFACE DISTURBANCE	DISTANCE	ACRES
CONSTRUCTION DISTURBANCE	NA	±4.287
TOTAL OIL & GAS LOCATION (LOD)	NA	±3.872
TOTAL OIL & GAS LOCATION (LOD)		±8.159

APPROXIMATE SURFACE DISTURBANCE AREAS		
30' WIDE ACCESS ROAD R-O-W DISTURBANCE	DISTANCE	ACRES
ROAD DISTURBANCE OUTSIDE R-O-W	±3,937'	±2.711
TOTAL ACCESS ROAD DISTURBANCE AREA	N/A	±2.079
TOTAL ACCESS ROAD DISTURBANCE AREA		±4.790

APPROXIMATE SURFACE DISTURBANCE AREAS		
60' WIDE PIPELINE R-O-W DISTURBANCE	DISTANCE	ACRES
PIPELINE DISTURBANCE INSIDE PAD AREA	±3,986'	±5.490
TOTAL PIPELINE DISTURBANCE	97'	±0.134
PIPELINE DISTURBANCE INSIDE ROAD R-O-W	4,083'	±5.624
TOTAL EXCESS PIPELINE DISTURBANCE AREA	N/A	±4.243
TOTAL EXCESS PIPELINE DISTURBANCE AREA		±1.381

TOTAL PROJECT DISTURBANCE		±14.330
---------------------------	--	---------

APPROXIMATE EARTHWORK QUANTITIES	
(6") TOPSOIL STRIPPING	3,950 Cu. Yds.
REMAINING LOCATION	26,080 Cu. Yds.
CUTTINGS TRENCH	16,080 Cu. Yds.
TOTAL CUT	46,080 Cu. Yds.
FILL	26,050 Cu. Yds.
EXCESS MATERIAL	20,030 Cu. Yds.
TOPSOIL & TRENCH BACKFILL	20,030 Cu. Yds.
EXCESS UNBALANCE (After Interim Rehabilitation)	0 Cu. Yds.

Sheet 1 of 2
 REV: 7 04-05-22 M.D. (TOPSOIL CHANGE & UPDATE ACRES)

TEP Rocky Mountain LLC
 FEDERAL RG 11-13-298 PAD
 LOT 4, SECTION 13, T2S, R98W, 6th P.M.
 RIO BLANCO COUNTY, COLORADO

SURVEYED BY: BART HUNTING SCALE: 07-21-21
 DRAWN BY: T.L.L. 07-23-21 AS SHOWN

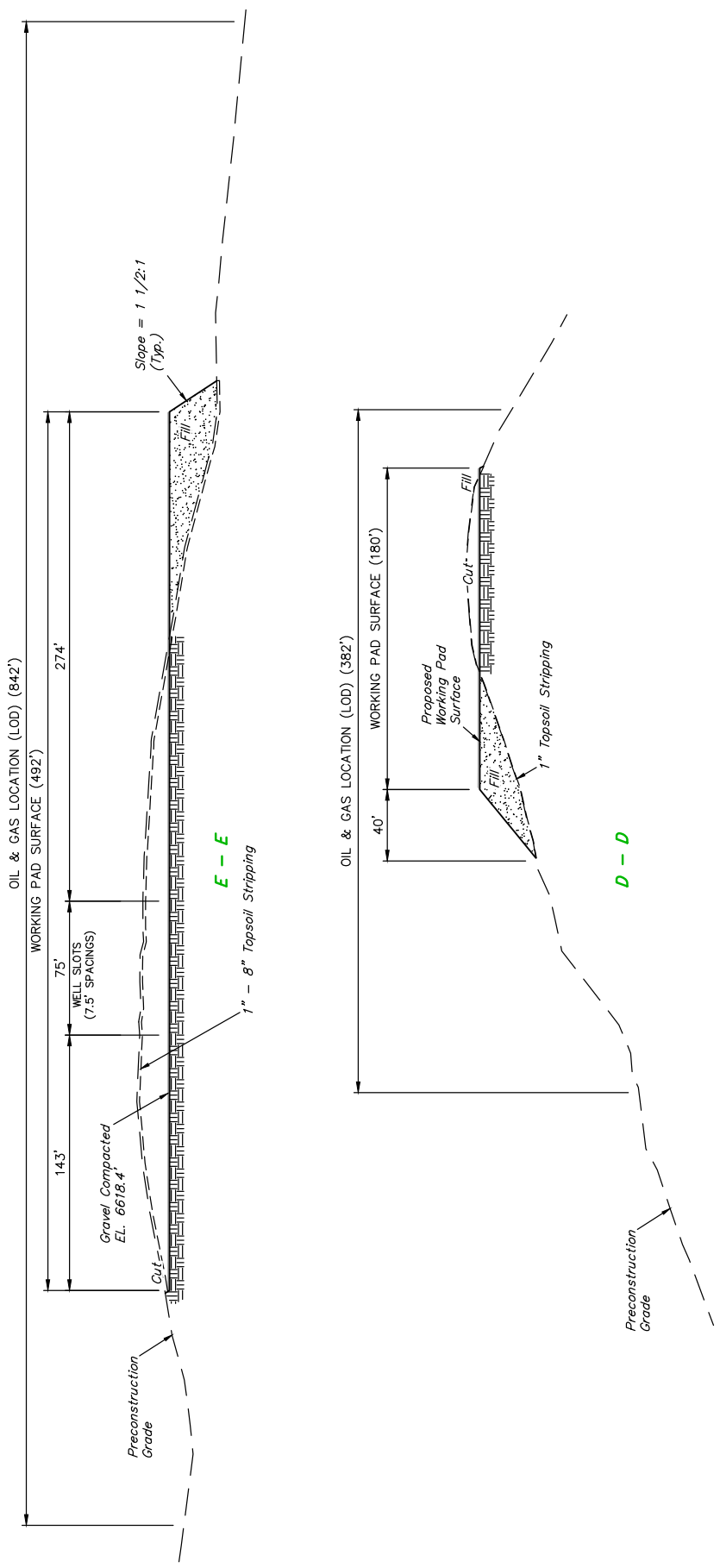
CONSTRUCTION LAYOUT CROSS SECTIONS

NOTE:
 Compacted Volume of Approximately
 1750 Cu. Yds. 4" aggregate base pad
 surfacing material is to be
 Applied to Entire Pad Footprint.

JUNTAH
 SURVEYING & LAND SERVICES, INC.

UFLS, LLC
 Corporate Office: 85 South 200 East
 Vernal, UT 84078 * (435) 789-1017

X-Section
Scale
1" = 60'



Sheet 2 of 2
REV: 7 04-05-22 M.D. (TOPSOIL CHANGE & UPDATE ACRES)

TEP Rocky Mountain LLC
FEDERAL RG 11-13-298 PAD
LOT 4, SECTION 13, T2S, R98W, 6th P.M.
RIO BLANCO COUNTY, COLORADO

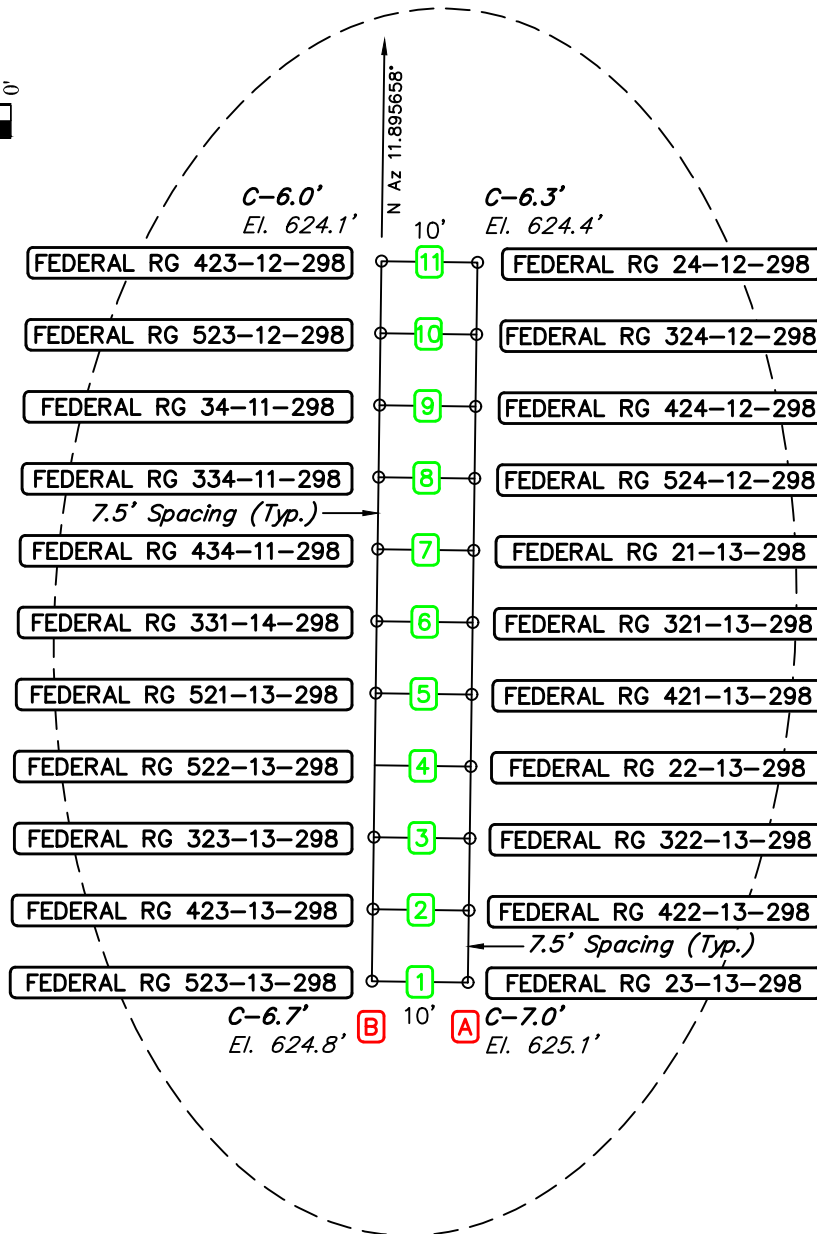
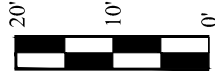
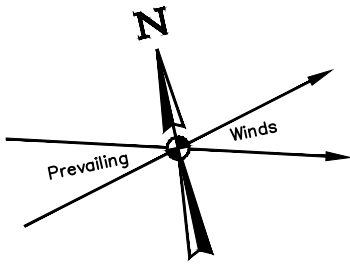
NOTES:
• Compacted Volume of Approximately 1750 Cu. Yds. 4" aggregate base pad surfacing material is to be Applied to Entire Pad Footprint.

SURVEYED BY	BART HUNTING	SCALE	07-21-21
DRAWN BY	T.L.L.	AS SHOWN	07-23-21

UFELS, LLC
Corporate Office: 85 South 200 East
Vernal, UT 84078 * (435) 789-1017



CONSTRUCTION LAYOUT CROSS SECTIONS



REV: 3 10-28-21 D.R.B. (PAD NAME CHANGE)

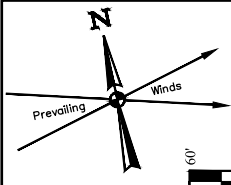
TEP Rocky Mountain LLC

**FEDERAL RG 11-13-298 PAD
 LOT 4, SECTION 13, T2S, R98W, 6th P.M.
 RIO BLANCO COUNTY, COLORADO**

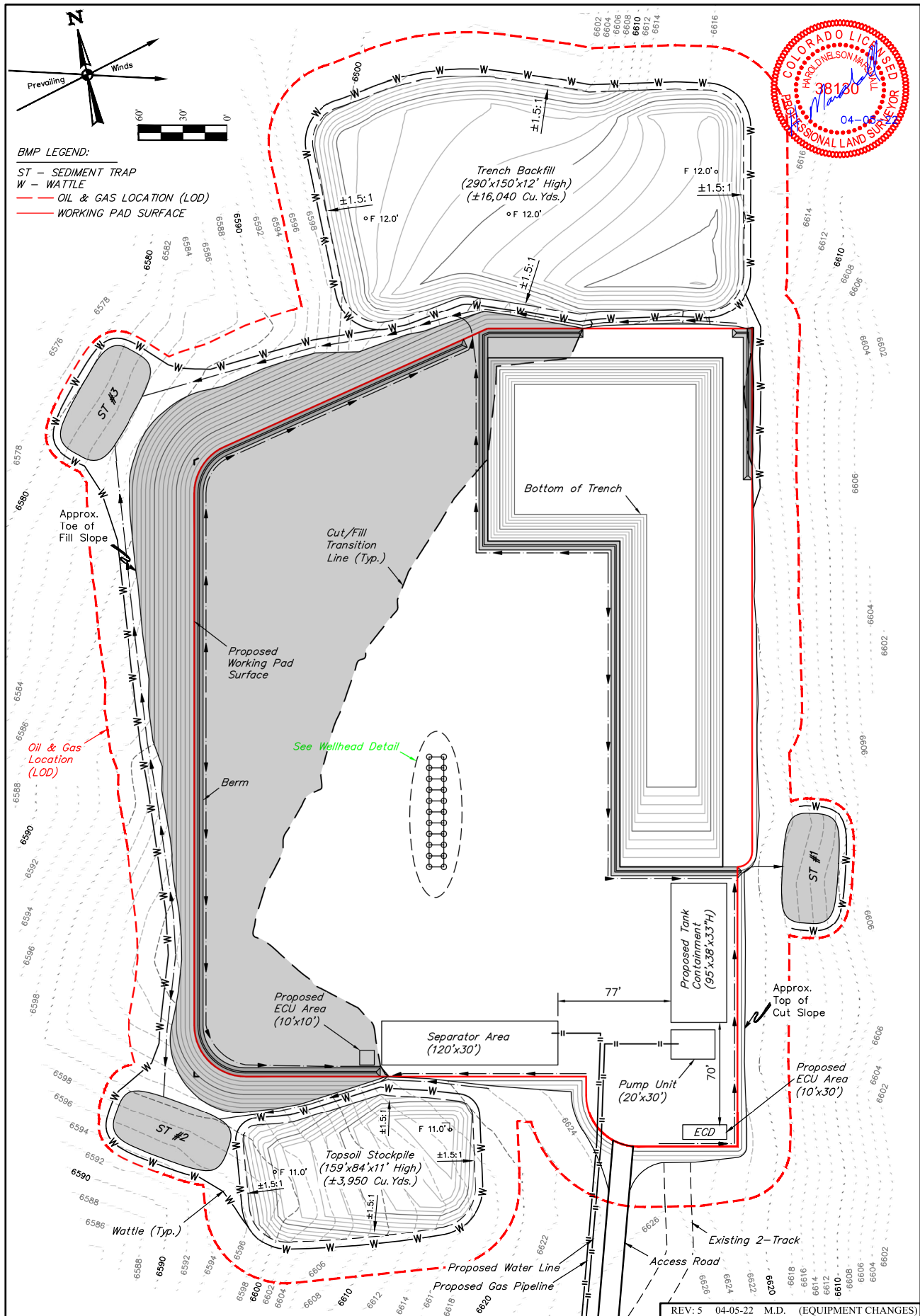


UELS, LLC
 Corporate Office * 85 South 200 East
 Vernal, UT 84078 * (435) 789-1017

SURVEYED BY	BART HUNTING	07-21-21	SCALE
DRAWN BY	T.L.L.	07-23-21	1" = 20'
WELLHEAD DETAIL			



BMP LEGEND:
 ST - SEDIMENT TRAP
 W - WATTLE
 --- OIL & GAS LOCATION (LOD)
 --- WORKING PAD SURFACE



NOTES:
 • Combustor is to be located a min. of 100' from the wellhead.
 • Contours shown at 2' intervals.

REV: 5 04-05-22 M.D. (EQUIPMENT CHANGES)

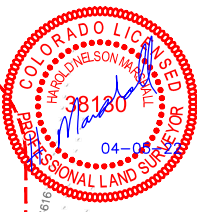
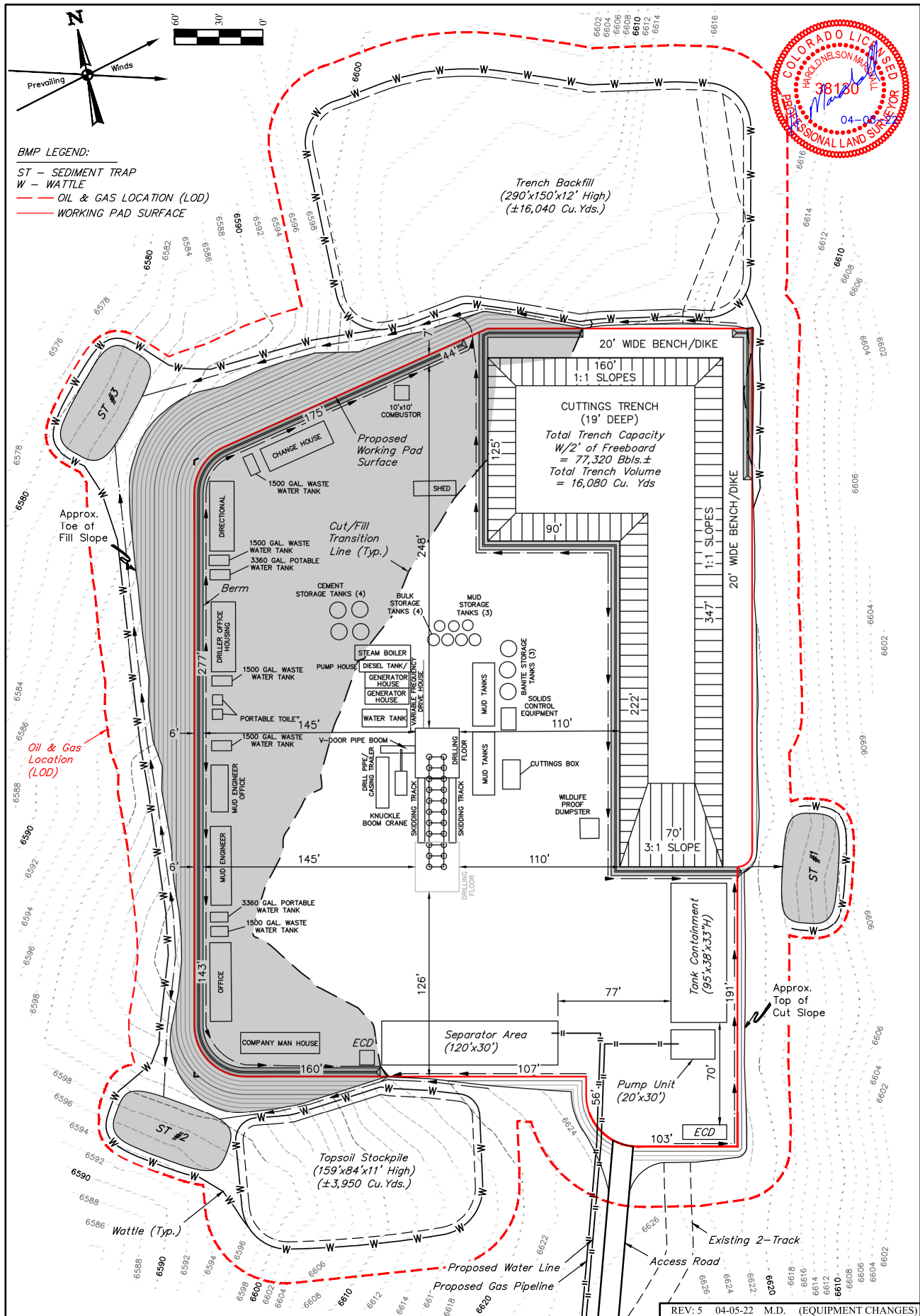
TEP Rocky Mountain LLC

FEDERAL RG 11-13-298 PAD
 LOT 4, SECTION 13, T2S, R98W, 6th P.M.
 RIO BLANCO COUNTY, COLORADO



UELS, LLC
 Corporate Office * 85 South 200 East
 Vernal, UT 84078 * (435) 789-1017

SURVEYED BY	BART HUNTING	07-21-21	SCALE
DRAWN BY	T.L.L.	09-20-21	1" = 60'
FINAL CONSTRUCTION GRADING			



BMP LEGEND:
 ST - SEDIMENT TRAP
 W - WATTLE
 --- OIL & GAS LOCATION (LOD)
 --- WORKING PAD SURFACE

Oil & Gas Location (LOD)

NOTES:
 • Combustor is to be located a min. of 100' from the wellhead.
 • Contours shown at 2' intervals.

REV: 5 04-05-22 M.D. (EQUIPMENT CHANGES)

TEP Rocky Mountain LLC

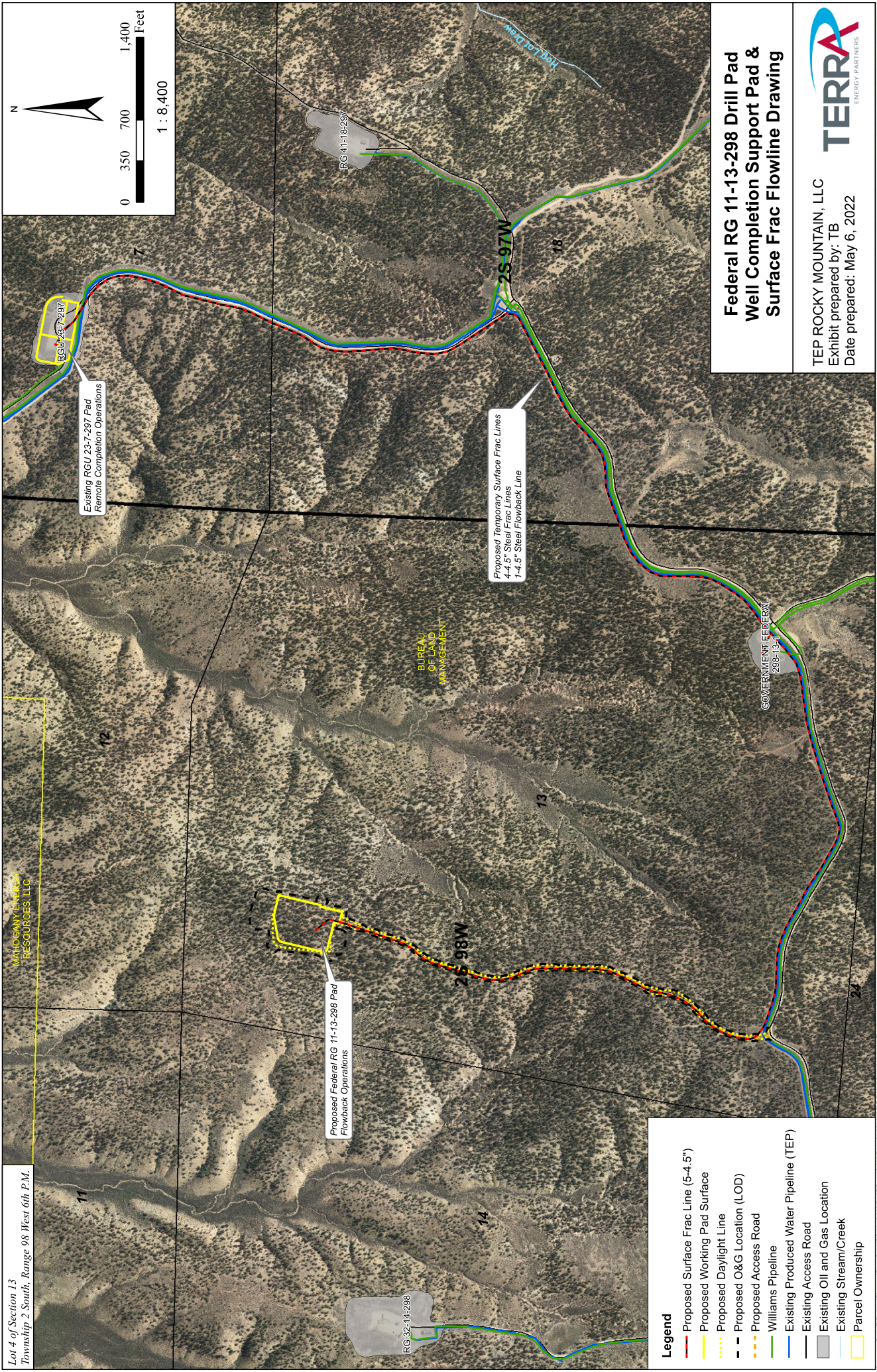
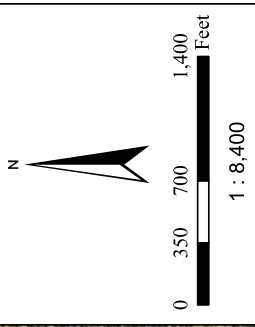
FEDERAL RG 11-13-298 PAD
 LOT 4, SECTION 13, T2S, R98W, 6th P.M.
 RIO BLANCO COUNTY, COLORADO

SURVEYED BY	BART HUNTING	07-21-21	SCALE
DRAWN BY	T.L.L.	09-20-21	1" = 60'

PRELIMINARY RIG LAYOUT

Lot 4 of Section 13
Township 2 South, Range 98 West 6th P.M.

MATHEWANY ENERGY
RESOURCES, LLC



Existing RGU 23-7-297 Pad
Remote Completion Operations

Proposed Federal RG 11-13-298 Pad
Flowback Operations

Proposed Temporary Surface Frac Lines
4-4.5" Steel Frac Lines
1-4.5" Steel Flowback Line

BUREAU
OF LAND
MANAGEMENT

GOVERNMENT FEDERAL
238-13-1

**Federal RG 11-13-298 Drill Pad
Well Completion Support Pad &
Surface Frac Flowline Drawing**

TEP ROCKY MOUNTAIN, LLC
Exhibit prepared by: TB
Date prepared: May 6, 2022

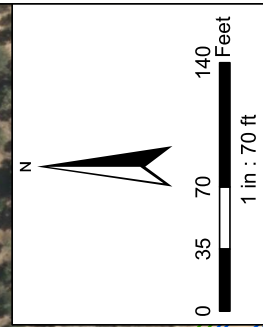
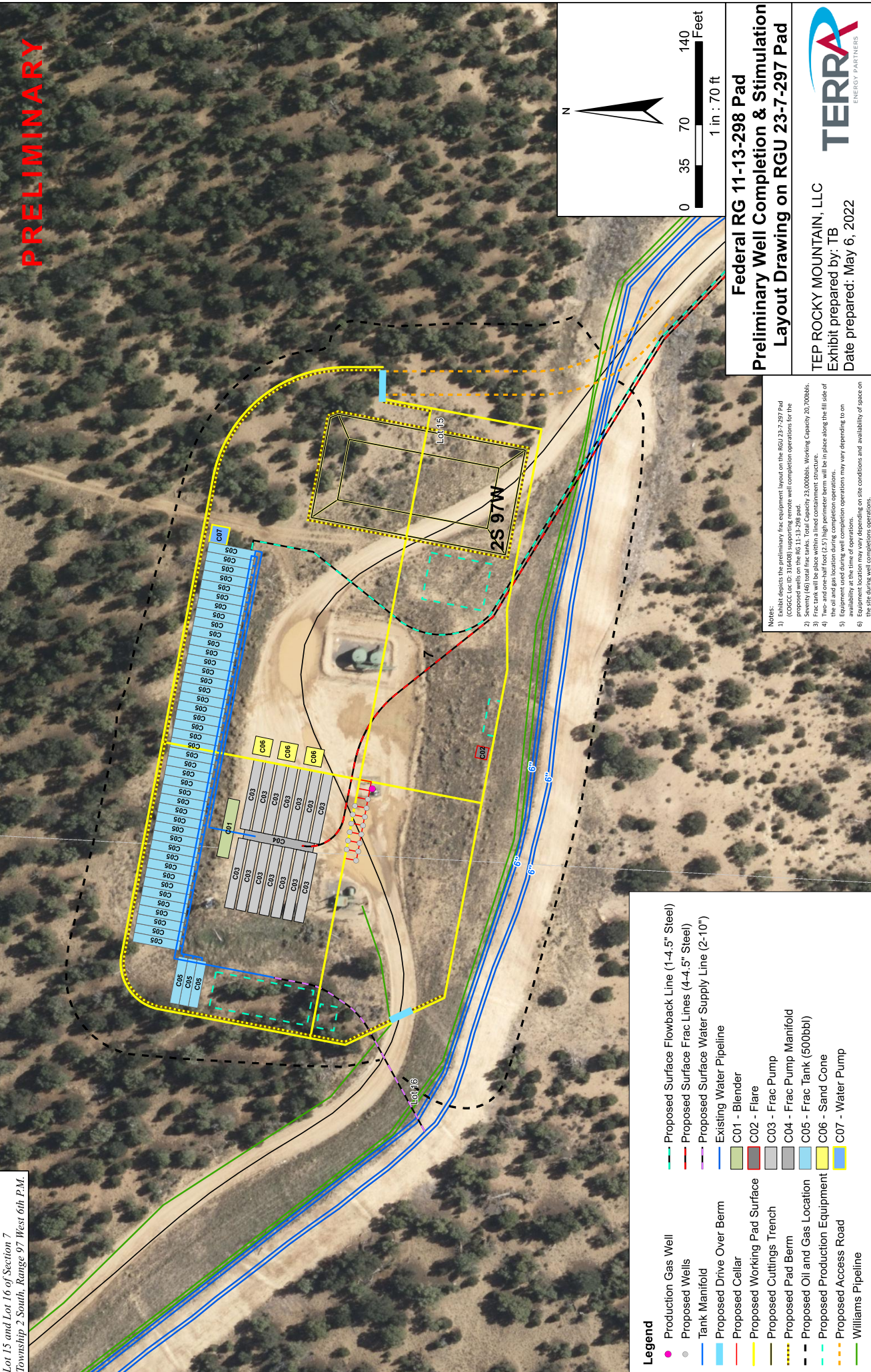


- Legend**
- Proposed Surface Frac Line (5-4.5")
 - Proposed Working Pad Surface
 - Proposed Daylight Line
 - - - Proposed O&G Location (LOD)
 - - - Proposed Access Road
 - Williams Pipeline
 - Existing Produced Water Pipeline (TEP)
 - Existing Access Road
 - Existing Oil and Gas Location
 - Existing Stream/Creek
 - Parcel Ownership

Document Path: T:\Project\Proseal\Ryan_Guid\RG 11-13-298\FairRG 11-13-298 Form 2A 304 10.071 B A Well Completion and Flowline.mxd

PRELIMINARY

Lot 15 and Lot 16 of Section 7
Township 2 South, Range 97 West 6th P.M.



Federal RG 11-13-298 Pad
Preliminary Well Completion & Stimulation
Layout Drawing on RGU 23-7-297 Pad

TEP ROCKY MOUNTAIN, LLC
 Exhibit prepared by: TB
 Date prepared: May 6, 2022



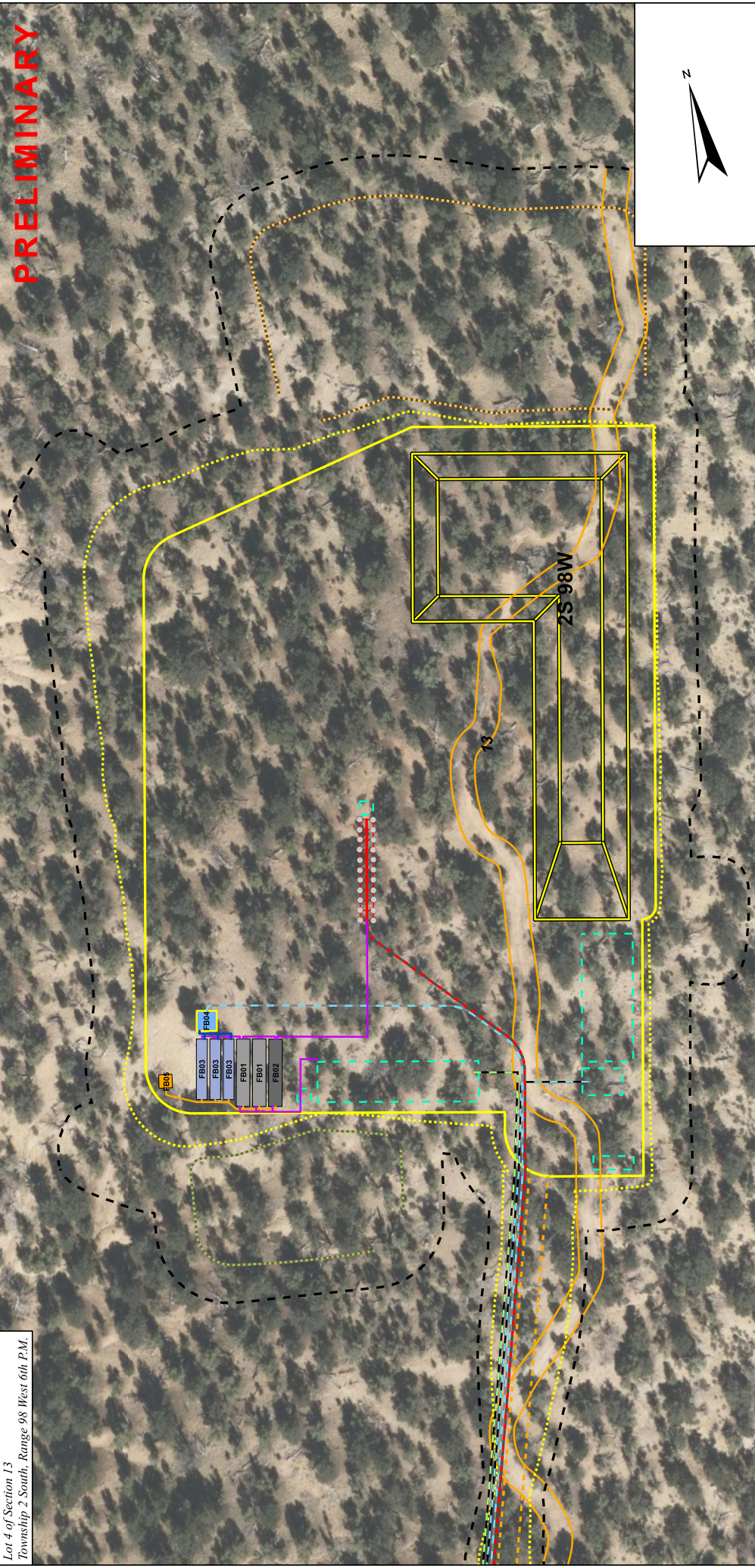
Notes:

- 1) Exhibit depicts the preliminary frac equipment layout on the RGU 23-7-297 Pad (COGCC Lic ID: 216408) supporting remote well completion operations for the 23-7-297 Pad. The layout is subject to change based on field conditions.
- 2) Seventy (40) total frac tanks. Total Capacity 23,000bbls. Working Capacity 20,700bbls.
- 3) Frac tanks will be placed within a lined containment structure.
- 4) Two- and one-half foot (2.5') high perimeter berm will be in place along the fill side of the oil and gas location during completion operations.
- 5) Equipment location during well completion operations may vary depending on on-site conditions.
- 6) Equipment location may vary depending on site conditions and availability of space on the site during well completion operations.

- Legend**
- Production Gas Well
 - Proposed Wells
 - Tank Manifold
 - Proposed Drive Over Berm
 - Proposed Cellar
 - Proposed Working Pad Surface
 - Proposed Cuttings Trench
 - Proposed Pad Berm
 - Proposed Oil and Gas Location
 - Proposed Production Equipment
 - Proposed Access Road
 - Williams Pipeline
 - Proposed Surface Flowback Line (1-4.5" Steel)
 - Proposed Surface Frac Lines (4-4.5" Steel)
 - Proposed Surface Water Supply Line (2-10")
 - Existing Water Pipeline
 - C01 - Blender
 - C02 - Flare
 - C03 - Frac Pump
 - C04 - Frac Pump Manifold
 - C05 - Frac Tank (500bbl)
 - C06 - Sand Cone
 - C07 - Water Pump

PRELIMINARY

Lot 4 of Section 13
Township 2 South, Range 98 West 6th P.M.



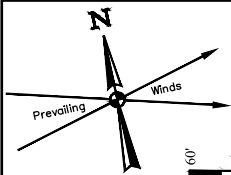
**Federal RG 11-13-298 Pad
Preliminary Flowback Equipment
Layout Drawing**

TEP ROCKY MOUNTAIN, LLC
Exhibit prepared by: AT
Date prepared: May 6, 2022



Notes:
1) Equipment used during flowback operation may vary depending to on availability at the time of operations.
2) Equipment location may vary depending on site conditions and availability of space on the site during well completions operations.
3) Please see the Construction Layout for site specific storm water control measures.

Legend	
	Proposed Gas Well
	Proposed Gas Pipeline
	Proposed Tank Manifold
	Proposed Wellhead Manifold
	Proposed Gas Pipeline
	Proposed Water Pipeline
	Proposed Production Equipment
	Proposed Cellar
	Proposed Working Pad Surface
	Proposed Cuttings Trench
	Proposed Daylight Line
	Proposed Oil & Gas Location (LOD)
	Existing Two-Track Road
	Proposed Access Road
	Proposed Excess Stockpile
	Proposed Topsoil Stockpile
	Proposed Surface Frac Lines (5-4.5')
	Proposed Flowback Line (1-4.5')
	FB01 - HP 4-Phase Separator
	FB02 - LP P-Tank
	FB03 - Produced Water Tank
	FB04 - Water Pump
	FB05 - Enclosed Combustion Device

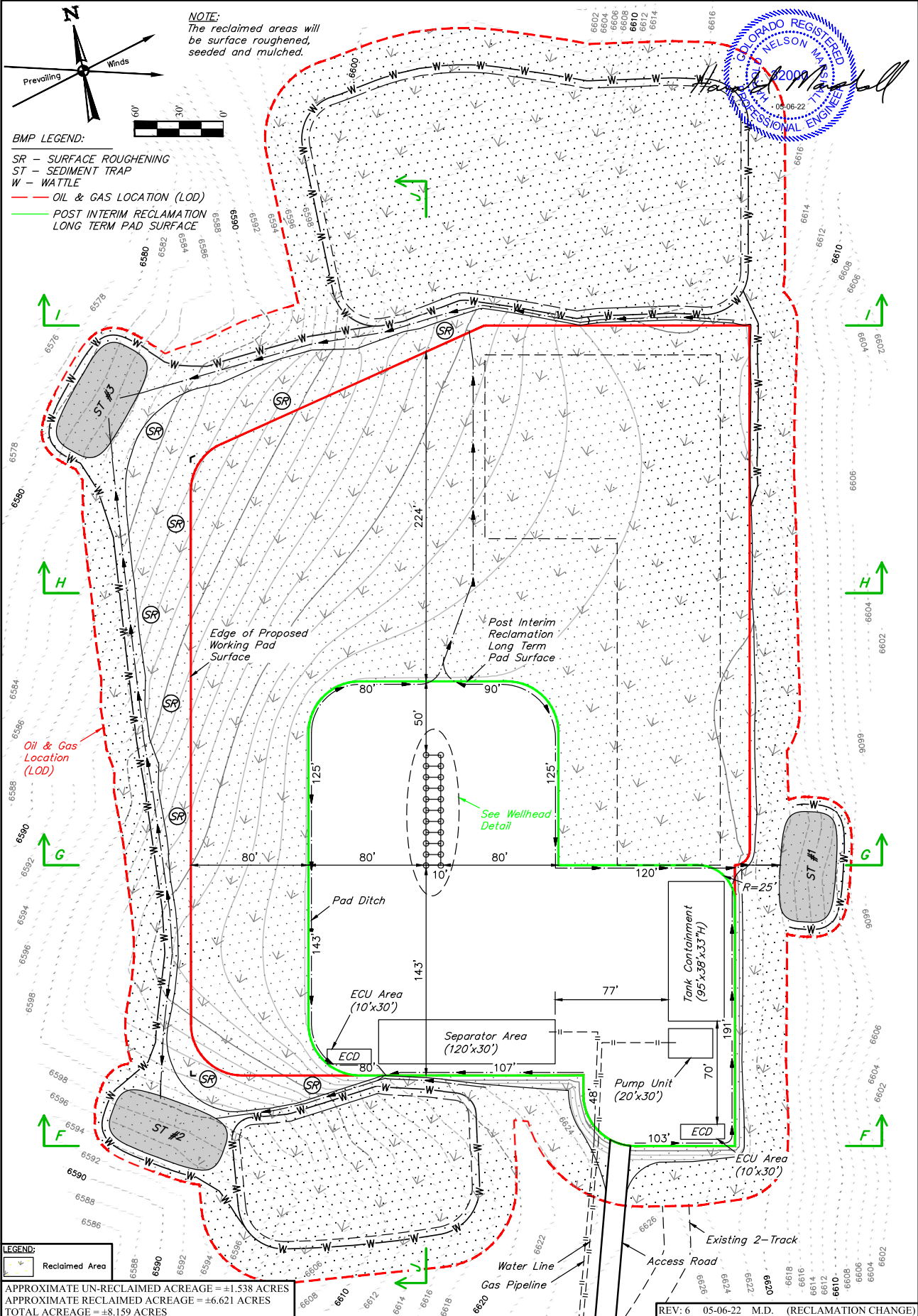


NOTE:
The reclaimed areas will be surface roughened, seeded and mulched.



BMP LEGEND:

- SR - SURFACE ROUGHENING
- ST - SEDIMENT TRAP
- W - WATTLE
- OIL & GAS LOCATION (LOD)
- POST INTERIM RECLAMATION LONG TERM PAD SURFACE



LEGEND:

	Reclaimed Area
--	----------------

APPROXIMATE UN-RECLAIMED ACREAGE = ±1.538 ACRES
 APPROXIMATE RECLAIMED ACREAGE = ±6.621 ACRES
 TOTAL ACREAGE = ±8.159 ACRES

NOTES:
 • Contours shown at 2' intervals.

REV: 6 05-06-22 M.D. (RECLAMATION CHANGE)

TEP Rocky Mountain LLC

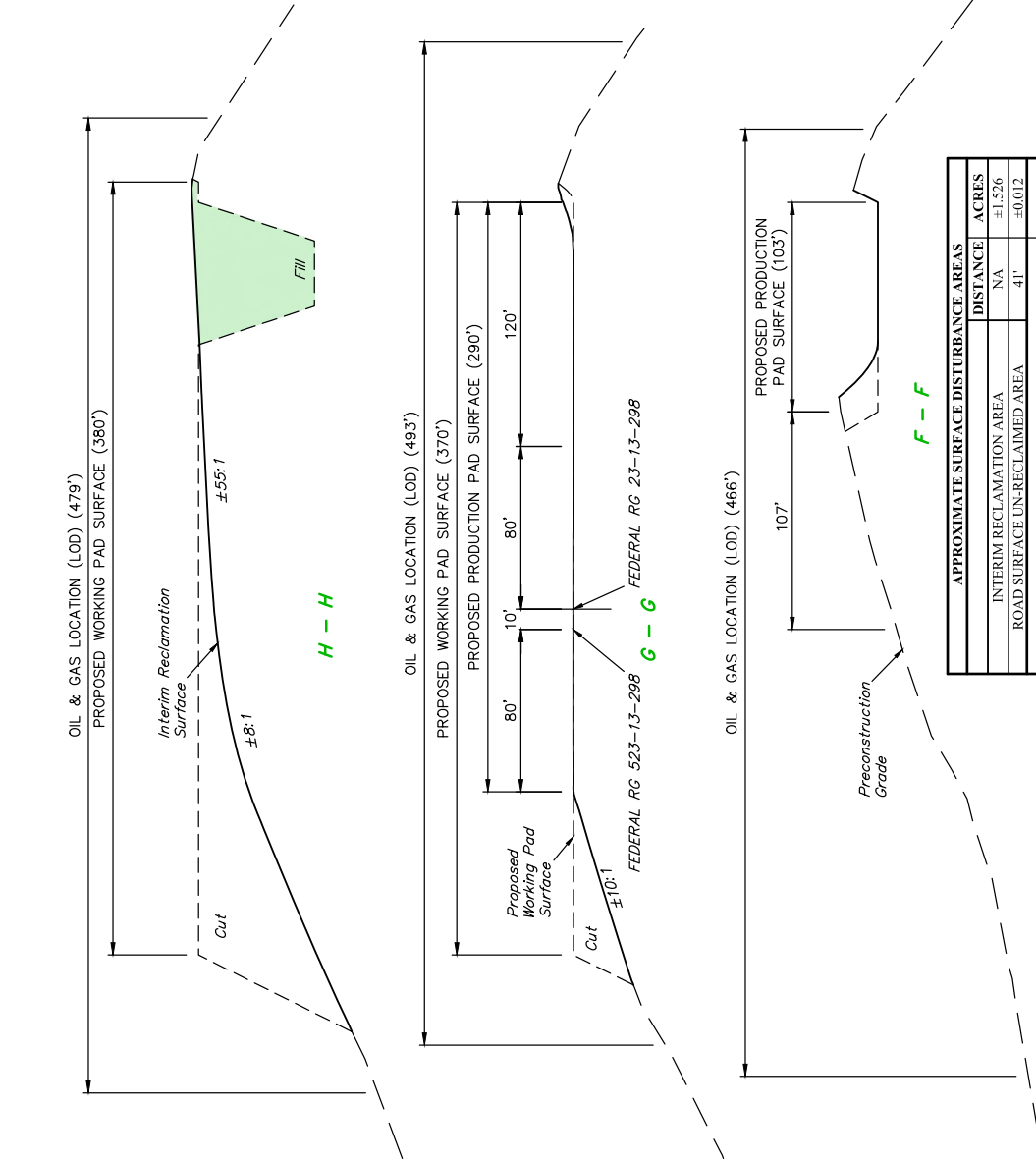
FEDERAL RG 11-13-298 PAD
 LOT 4, SECTION 13, T2S, R98W, 6th P.M.
 RIO BLANCO COUNTY, COLORADO



UELS, LLC
 Corporate Office * 85 South 200 East
 Vernal, UT 84078 * (435) 789-1017

SURVEYED BY	BART HUNTING	07-21-21	SCALE
DRAWN BY	T.L.L.	09-20-21	1" = 60'
INTERIM RECLAMATION LAYOUT-PLAN VIEW			

X-Section
Scale
1" = 60'



NOTE:
Reclaim Slopes Vary as Shown.



Sheet 1 of 2

REV: 5 05-06-22 M.D. (RECLAMATION CHANGE)

TEP Rocky Mountain LLC

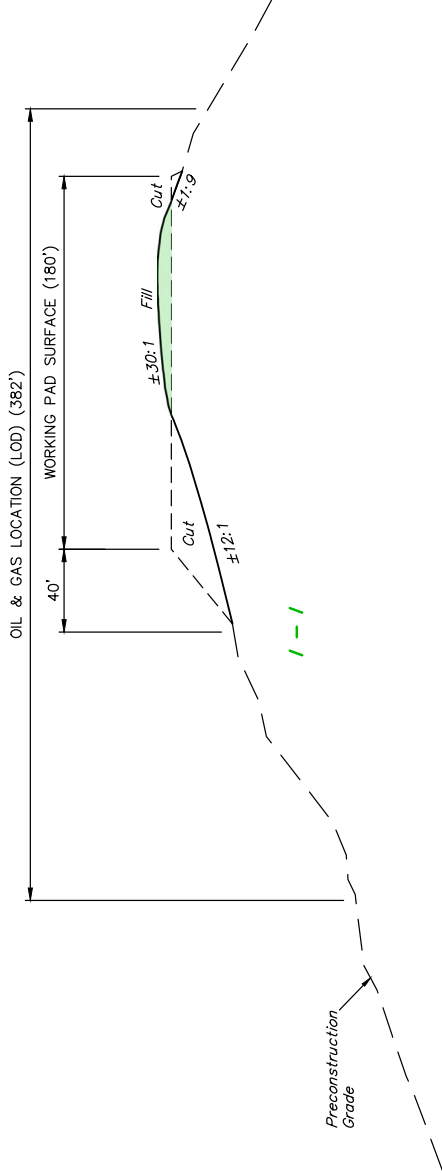
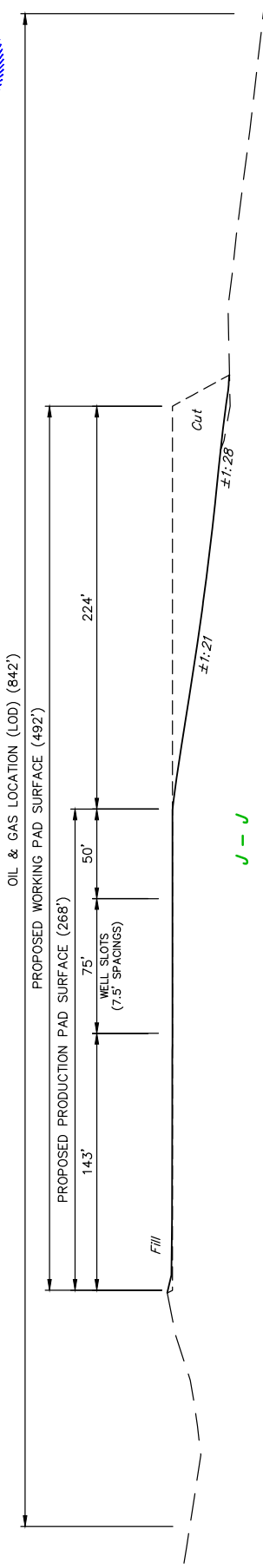
FEDERAL RG 11-13-298 PAD
LOT 4, SECTION 13, T2S, R98W, 6th P.M.
RIO BLANCO COUNTY, COLORADO

SURVEYED BY	BART HUNTING	SCALE	07-21-21
DRAWN BY	T.L.L.	AS SHOWN	07-23-21

UFLS, LLC
Corporate Office: 85 South 200 East
Vernal, UT 84078 * (435) 789-1017



X-Section
Scale
1" = 60'



NOTE:
Reclaim Slopes Vary as Shown.

Sheet 2 of 2
REV. 3 01-10-22 T.L.L. (TRENCH CHANGES & ADD (LOD) DIMENSIONS)

TEP Rocky Mountain LLC

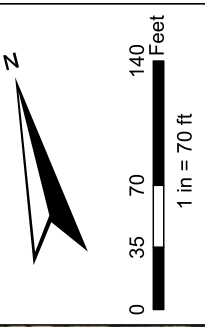
FEDERAL RG 11-13-298 PAD
LOT 4, SECTION 13, T2S, R98W, 6th P.M.
RIO BLANCO COUNTY, COLORADO

SURVEYED BY	BART HUNTING	SCALE
DRAWN BY	T.L.L.	07-21-21 AS SHOWN
INTERIM RECLAMATION CROSS SECTIONS		

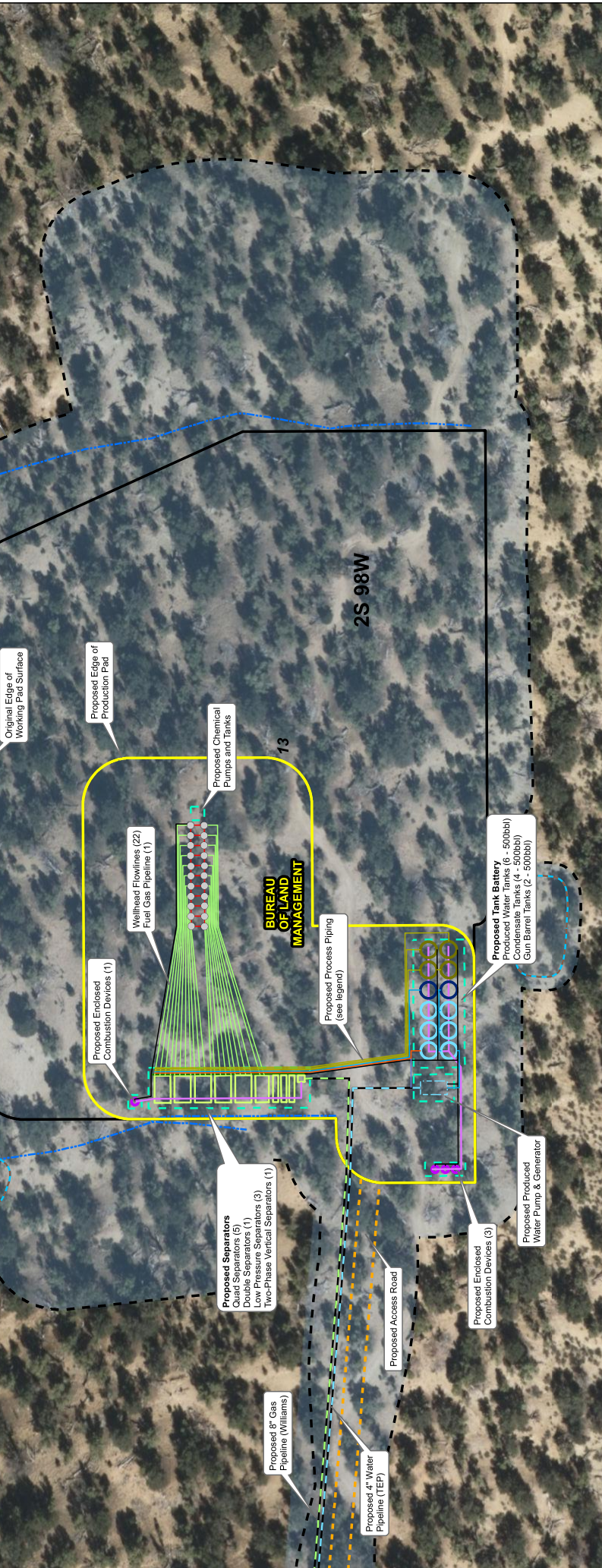
UFLS, LLC
Corporate Office: 85 South 200 East
Vernal, UT 84078 * (435) 789-1017



Lot 4 of Section 13
Township 2 South, Range 98 West 6th P.M.



Proposed O&G Location
(Limit of Disturbance)



**Federal RG 11-13-298 Pad
Oil and Gas Facilities Layout Drawing
Interim Reclamation**

TEP ROCKY MOUNTAIN, LLC
Exhibit prepared by: AT
Date prepared: April 1, 2022

Legend

- Proposed Gas Well
- Proposed Gas Pipeline (8")
- Proposed Gas Pipeline (6")
- Proposed Water Pipeline (6")
- Proposed Water Pump/Generator
- Proposed Fuel Gas Line
- Proposed Produced Water Dump Line
- Proposed Condensate Dump Line
- Proposed Vent Line
- Proposed Blowdown Line
- Proposed Stormwater Control
- Proposed ECD
- Proposed Gas Sales Line
- Proposed Wellhead Flowline
- Proposed Water Pump/Generator
- Proposed Fuel Gas Line
- Proposed Produced Water Dump Line
- Proposed Condensate Dump Line
- Proposed Vent Line
- Proposed Blowdown Line
- Proposed ECD
- Proposed Production Equipment
- Proposed Ditch
- Parcel Ownership
- Proposed Disturbance Area
- Original Working Pad Surface
- Proposed Production Pad
- Proposed O&G Location (LOD)
- Proposed Access Road
- Proposed Stormwater Control

Y:\Projects\PowerPlay\Gulfport\RG 11-13-298 Pad\RG 11-13-298 Form 2A.dwg (6/10/22) Rev. Facility Layout Drawing Interim Reclamation.dwg (A) Interim.dwg (4/1/2022)