



- KPK Flowline
- KPK Wellhead

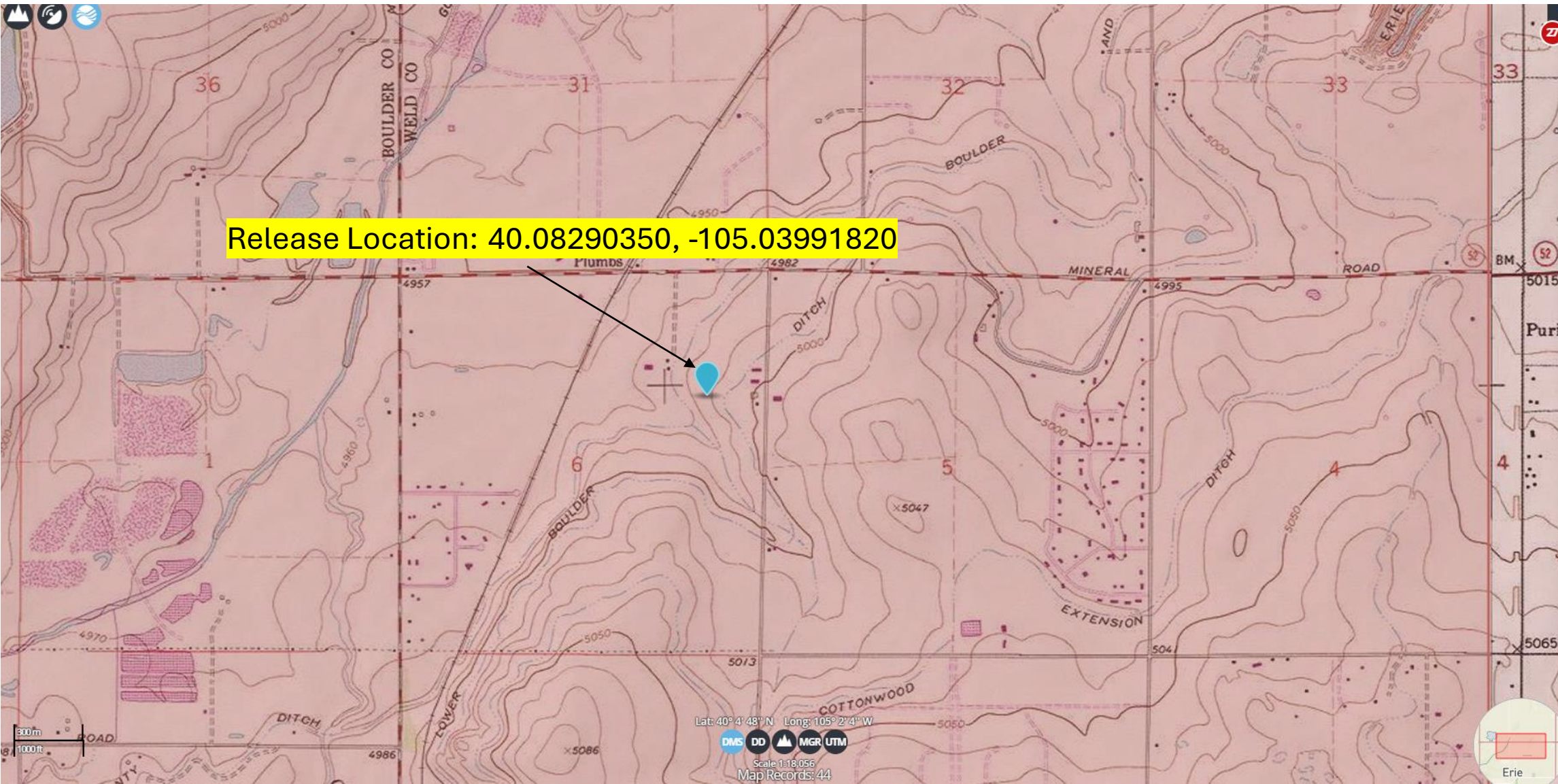
Date:	August 2024
Designed By:	KPK
Drawn By:	CC



K.P. Kauffman Company, Inc.
1700 Lincoln St. Suite 4550
Denver CO, 80202

K.P. Kauffman Company, Inc.
Koch 41-6 Flowline
NENE, Section 6, Township 1 North, Range 68 West
Weld County, CO

Site Map



Release Location: 40.08290350, -105.03991820

Lat: 40° 4' 48" N Long: 105° 2' 4" W
DMS DD MGR UTM
Scale 1:18,056
Map Records: 44

Date:	August 2024
Designed By:	KPK
Drawn By:	CC



K.P. Kauffman Company, Inc.
1700 Lincoln St. Suite 4550
Denver CO, 80202

K.P. Kauffman Company, Inc.
Koch 41-6 Flowline
NENE, Section 6, Township 1 North, Range 68 West
Weld County, CO

Topographic Map – SS-9@5'



Background
Soil Sample
Location



Confirmation
Soil Sample
Location

Google Earth

Date:	August 2024
Designed By:	KPK
Drawn By:	CC



K.P. Kauffman Company, Inc.
1700 Lincoln St. Suite 4550
Denver CO, 80202

K.P. Kauffman Company, Inc.
Koch 41-6 Flowline
NENE, Section 6, Township 1 North, Range 68 West
Weld County, CO

Soil Sample Location Map – SS-9@5'