

# Final Reclamation and Stormwater Inspection

Date: 08/06/2024

Operator: PDC ENERGY INC - 69175

Location ID: 306705

Inspection Document #: 708201484

Weld County, CO



**COLORADO**  
Energy & Carbon Management  
Commission  
Department of Natural Resources

Inspection Photos  
Location Name: Rothe 24-29U  
Location ID: 306705



**Photo 1.** The well location (Location ID 306705 with API 123-25137) meets final reclamation regulations and standards. Unable to find evidence of oil and gas activities and/or disturbances. Well location and access road appear reflective of reference crop areas.



**Photo 2.** Facing east; see comments in Photo 1.



Inspection Photos  
Location Name: Rothe 24-29U  
Location ID: 306705



**Photo 3.** Facing south; see comments in Photo 1.

Inspection Photos  
Location Name: Rothe 24-29U  
Location ID: 306705



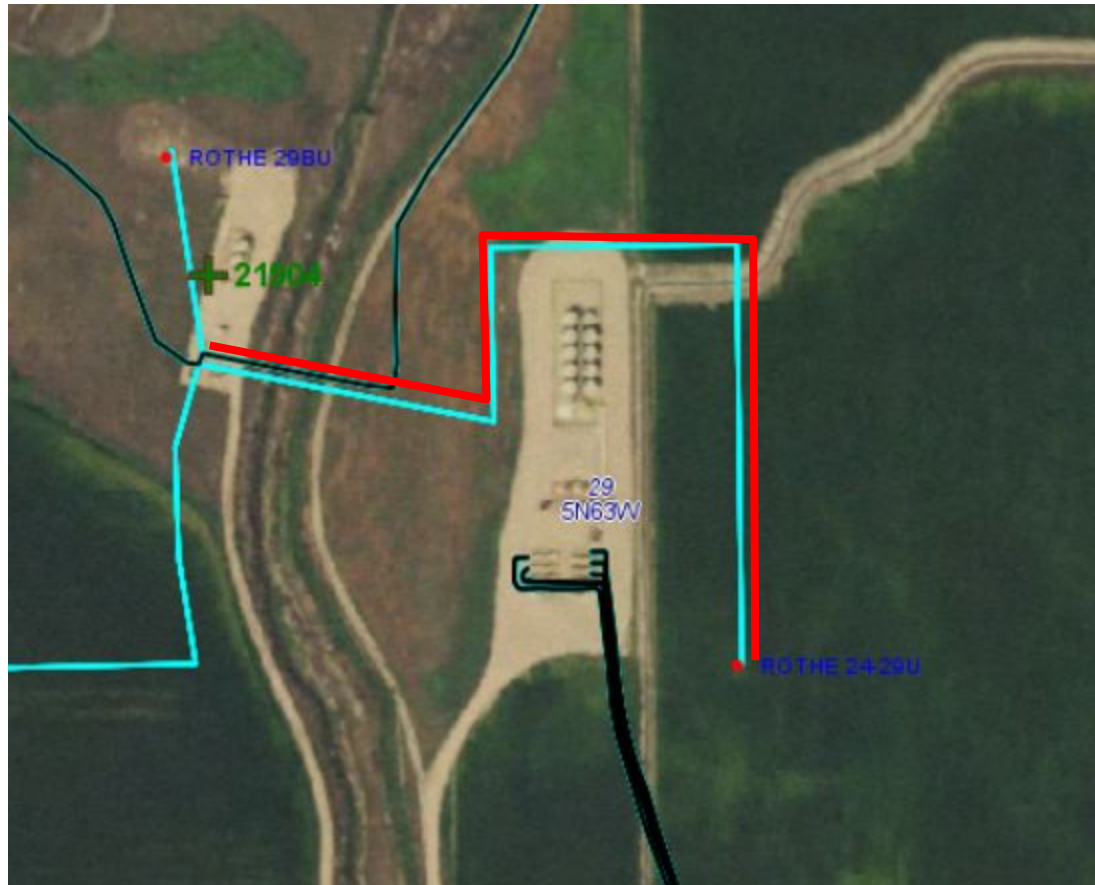
**Photo 4.** Facing west; see comments in Photo 1.





**Photo 5.** Approximate well location; ground view.

Inspection Photos  
Location Name: Rothe 24-29U  
Location ID: 306705



**Photo 6.** Red line illustrates off-location flowline from the subject well (API 123-25137) to the associated tank battery. Operator is required to submit a Form 44 Off-Location Flowline Abandonment Notice per Rule 1105.f.(2).