

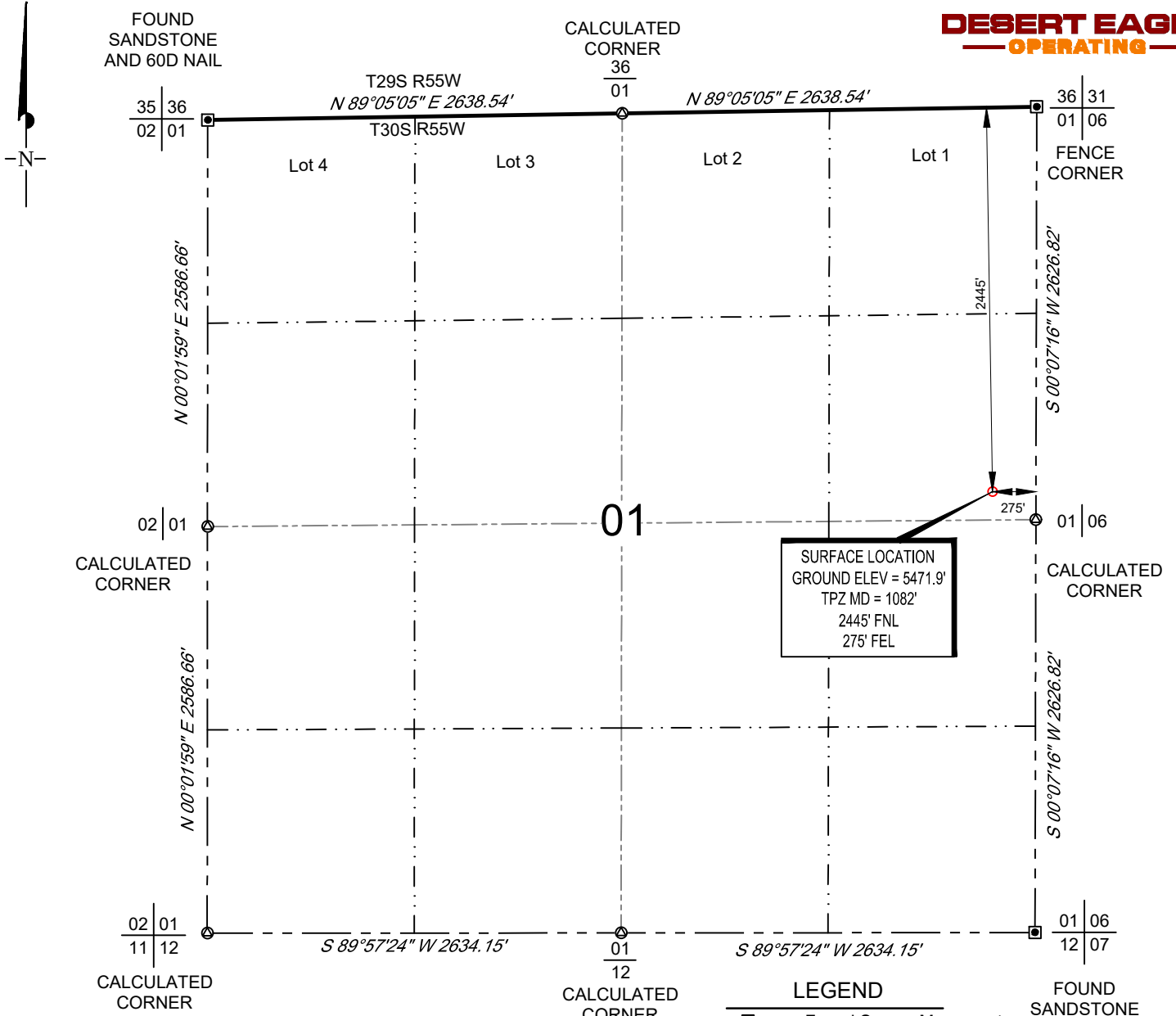
SCALE: 1" = 1000'  
 0' 500' 1000'

# WELL LOCATION MAP

SHL SE/4 NE/4, SECTION 01, TOWNSHIP 30-S, RANGE 55-W  
 LAS ANIMAS COUNTY, COLORADO



**DESERT EAGLE**  
 OPERATING



POINT	NAD 83		NAD 27	
SURFACE HOLE LOCATION	N:	1295110.81	N:	295101.28
	E:	3575461.71	E:	2575620.82
	LAT:	N37.4603722	LAT:	N37.4603557
	LONG:	W103.5172279	LONG:	W103.5167289

**LEGEND**

- Found Survey Monument
- Calculated Corner Location
- Vertical Well Location
- Section Line
- Quarter Section Line
- Sixteenth Section Line

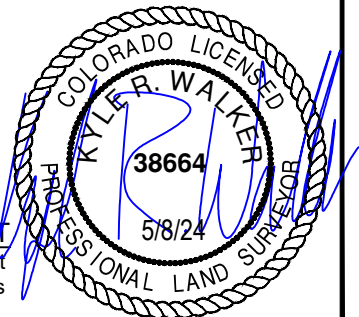
**NOTES**

1. Horizontal (NAD 83) and vertical (NAVD 88) datum is based on the Trimble VRS Network or OPUS Solution.
2. All directions, distances, and dimensions shown hereon are based on coordinates from the "Colorado coordinate system of 1983 central zone" (article 52 of title 38, C.R.S.).
3. All section line dimensions shown hereon are based on field measurements of existing monuments and/or physical evidence found in the field unless otherwise indicated.
4. See Form 2A, if applicable for visible improvements within 500' of wellhead.
5. Distances to nearest section lines are measured perpendicularly.
6. This is not a land survey nor land survey plat.

PDOP Reading: 1.325 Instrument Operator: Daniel Penland  
 Date Surveyed: 11/17/2023

**SURVEYOR'S STATEMENT**

The undersigned hereby states that the well location shown hereon was staked on the ground based on existing monumentation and/or physical evidence found in the field and is correct to the best of my knowledge, information and belief.



**TOPOGRAPHIC**  
 LOYALTY INNOVATION LEGACY  
 520 STACY COURT, UNIT B • LAFAYETTE, COLORADO 80026  
 TELEPHONE: (303) 666-0379 • FAX (303) 665-6320  
 WWW.TOPOGRAPHIC.COM

DESERT EAGLE OPERATING RED ROCKS #1-09	SW	01/03/2024	REVISION:	
	SHEET:	1 OF 1	INT	DATE
	FILE:	LO_RED_ROCKS_1_09		