

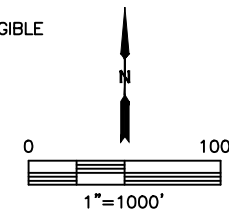
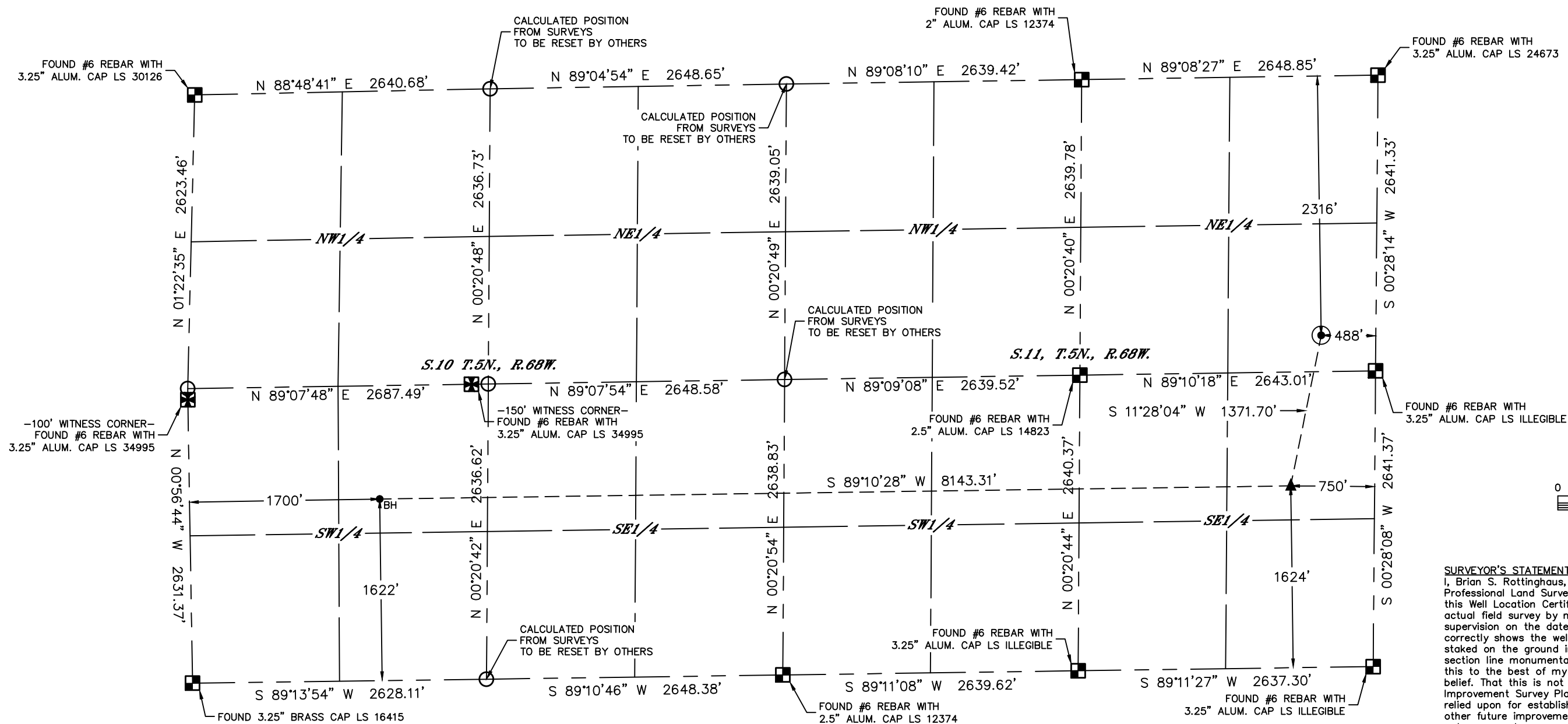


Lat40°, Inc. 6250 W. 10th Street, Unit 2, Greeley, CO 970-515-5294

# WELL LOCATION CERTIFICATE

CE 5-68 11-10-13H  
BISON OIL & GAS IV

Q: NE4  
SECTION: 11  
TOWNSHIP: 5N  
RANGE: 68W  
6TH. P.M.  
LARIMER COUNTY, CO



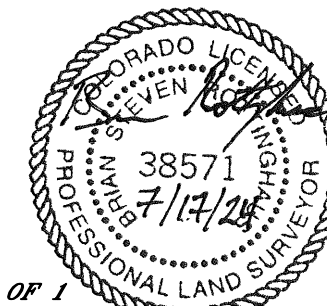
**SURVEYOR'S STATEMENT**  
I, Brian S. Rottinghaus, a Colorado Licensed Professional Land Surveyor, do hereby state that this Well Location Certificate was prepared from an actual field survey by me or under my personal supervision on the date shown hereon, and correctly shows the well surface hole location as staked on the ground in relation to the existing section line monumentation as indicated hereon, all this to the best of my knowledge, information and belief. That this is not a Land Survey Plat or an Improvement Survey Plat, and that it is not to be relied upon for establishment of fence, building, or other future improvement lines. This certificate is not a guaranty or warranty, either expressed or implied.

- LEGEND**
- = ALIQUOT MONUMENT AS DESCRIBED
  - = CALCULATED POSITION
  - ⊙ = SURFACE HOLE LOCATION (SHL)
  - ▲ = ENTRY POINT LOCATION (EP)
  - ◆ = TOP OF PRODUCTIVE ZONE (PZONE)
  - = BOTTOM HOLE LOCATION (BHL)
  - ⊕ = EXISTING WELL
  - ⊖ = ABANDONED WELL

CLIENT: BISON OIL & GAS IV				LANDMAN: IAN HOGAN					
INSTRUMENT OPERATOR: CASEY KOHOUT				SURVEY DATE: 6/10/2022		SURFACE USE: CROP LAND			
SHL FOOTAGE	SHL LAT °	SHL LONG °	SHL PDOP	SHL ELEV (FT.)	SHL 1/4/1/4	SHL S-T-R			
2316	FNL	488	FEL	40.41535	-104.96594	1.7	4979	SENE	11-5-68

BHL FOOTAGE	BHL LAT °	BHL LONG °	BHL S-T-R	EP LAT °	EP LONG °	EP S-T-R			
1622	FSL	1700	FWL	40.41148	-104.99618	10-5-68	40.41167	-104.96695	11-5-68

- NOTE:**
- Bearings shown are Grid Bearings of the Colorado State Plane Coordinate System, North Zone, North American Datum 1983. The lineal dimensions as contained herein are based upon the "U.S. Survey Foot."
  - Distances to section lines measured at 90 degrees from said section lines.
  - Ground elevations are based on an observed GPS elevation (NAVD 1988 DATUM).
  - Latitude and Longitude shown are (NAD 83 DATUM).
  - IMPROVEMENTS: See LOCATION DRAWING for all visible improvements.
  - This map does not represent a boundary survey.
  - According to Colorado law, you must commence any legal action based upon any defect in this W.L.C. within three years after you discover such defect. In no event, may any action based upon any defect in this survey be commenced more than ten years after the date of the certificate shown hereon. (13-80-105 C.R.S.)



**SHEET 1 OF 1**  
Brian S. Rottinghaus—On behalf of Lat40°, Inc.  
Colorado Licensed Professional Land Surveyor No. 38571  
DATE: 7/17/2024  
PROJECT#: 2024193