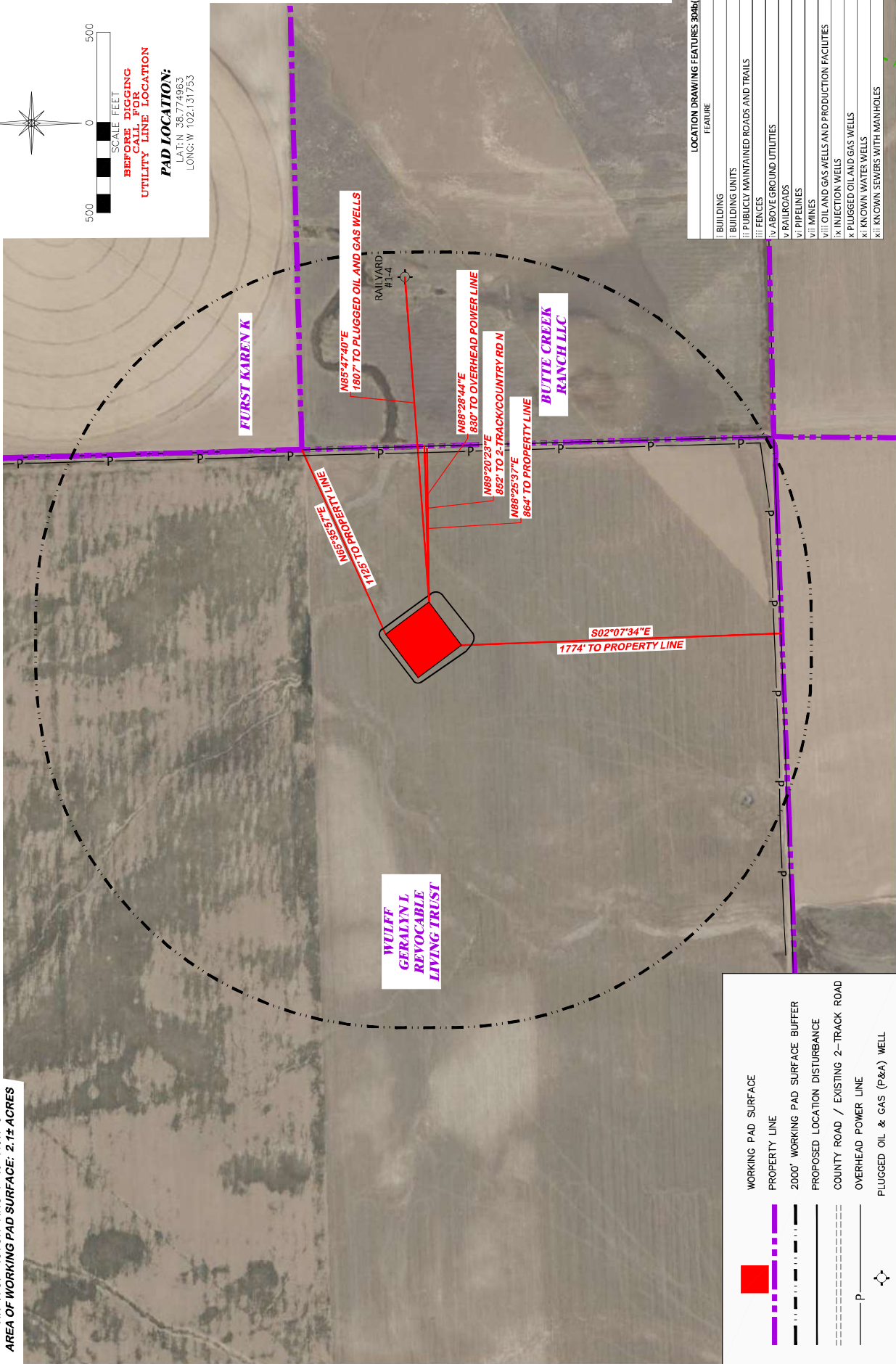
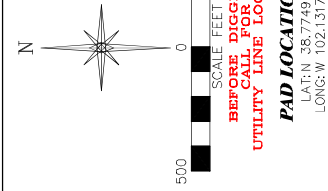


#1 WAVETECH WULFF TRUST 43-5

UNGRADED ELEVATION: 3959.2'
FINAL ELEVATION: 3958.5'
AREA OF DISTURBANCE: 2.8± ACRES
AREA OF WORKING PAD SURFACE: 2.1± ACRES

WAVETECH HELIUM, INC.
#1 WAVETECH WULFF TRUST 43-5
NESE, SECTION 5, T. 15 S., R. 42 W., 6th P.M.,
CHEYENNE COUNTY, COLORADO



LOCATION DRAWING FEATURES 304b(7)(A)	DISTANCE
I. BUILDING	3351' NE
II. BUILDING UNITS	5280' N
III. PUBLICLY MAINTAINED ROADS AND TRAILS	852' E
IV. FENCES	5280' NE
V. ABOVE GROUND UTILITIES	8300' E
VI. RAILROADS	5280' N
VII. PIPELINES	3810' SE
VIII. MINES	5280' SW
IX. OIL AND GAS WELLS AND PRODUCTION FACILITIES	4586' NE
X. INJECTION WELLS	5280' NE
XI. PLUGGED OIL AND GAS WELLS	1807' E
XII. KNOWN WATER WELLS	3596' S
XIII. KNOWN SEWERS WITH MANHOLES	5280' N

WORKING PAD SURFACE	
PROPERTY LINE	
2000' WORKING PAD SURFACE BUFFER	
PROPOSED LOCATION DISTURBANCE	
COUNTY ROAD / EXISTING 2-TRACK ROAD	
OVERHEAD POWER LINE	
PLUGGED OIL & GAS (P&G) WELL	

1414 ELK ST., ROCK SPRINGS, WY 82901
DRAWN: 12/14/22 - DWB/JMB
REVISID: 2/6/24 - JMB
UPDATED TABLE
SCALE: 1" = 500'
DRG JOB NO. 22304
304b(7)(A) LOC AERIAL

