

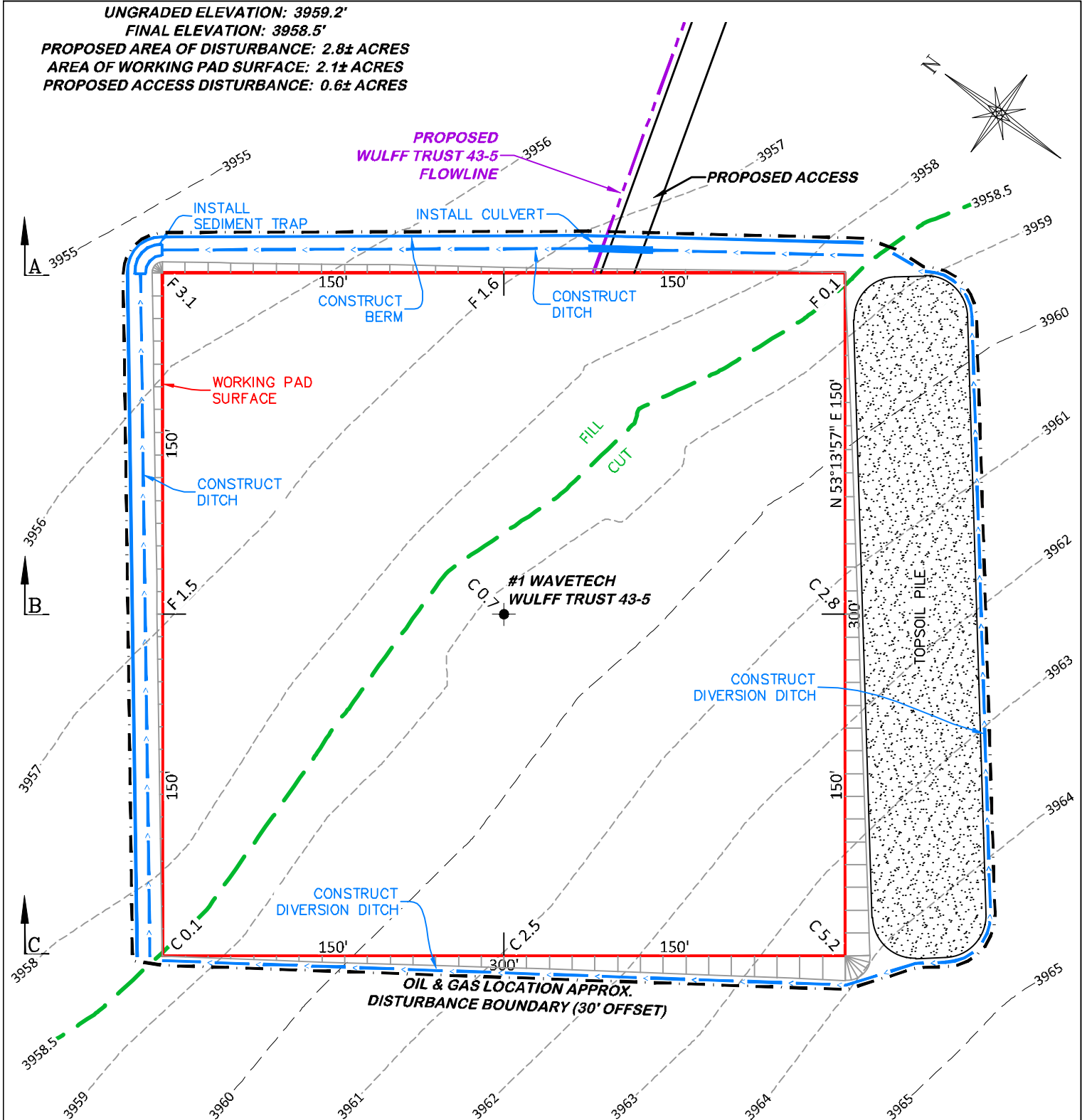
UNGRADED ELEVATION: 3959.2'

FINAL ELEVATION: 3958.5'

PROPOSED AREA OF DISTURBANCE: 2.8± ACRES

AREA OF WORKING PAD SURFACE: 2.1± ACRES

PROPOSED ACCESS DISTURBANCE: 0.6± ACRES



#1 WAVETECH WULFF TRUST 43-5

NOTE: THE EARTH QUANTITIES ON THIS DRAWING ARE ESTIMATED AND THE USE OF SAID QUANTITIES IS AT THE RESPONSIBILITY OF THE USER.



DRG RIFFIN & ASSOCIATES, INC.
(307) 362-5028 1414 ELK ST., ROCK SPRINGS, WY 82901

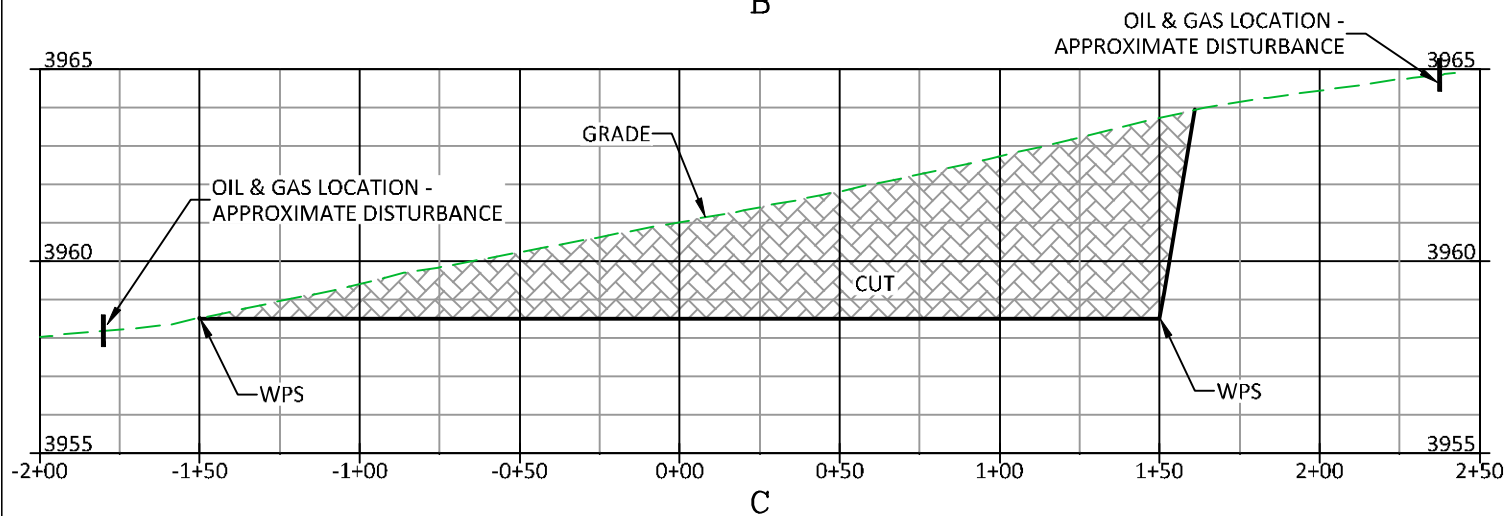
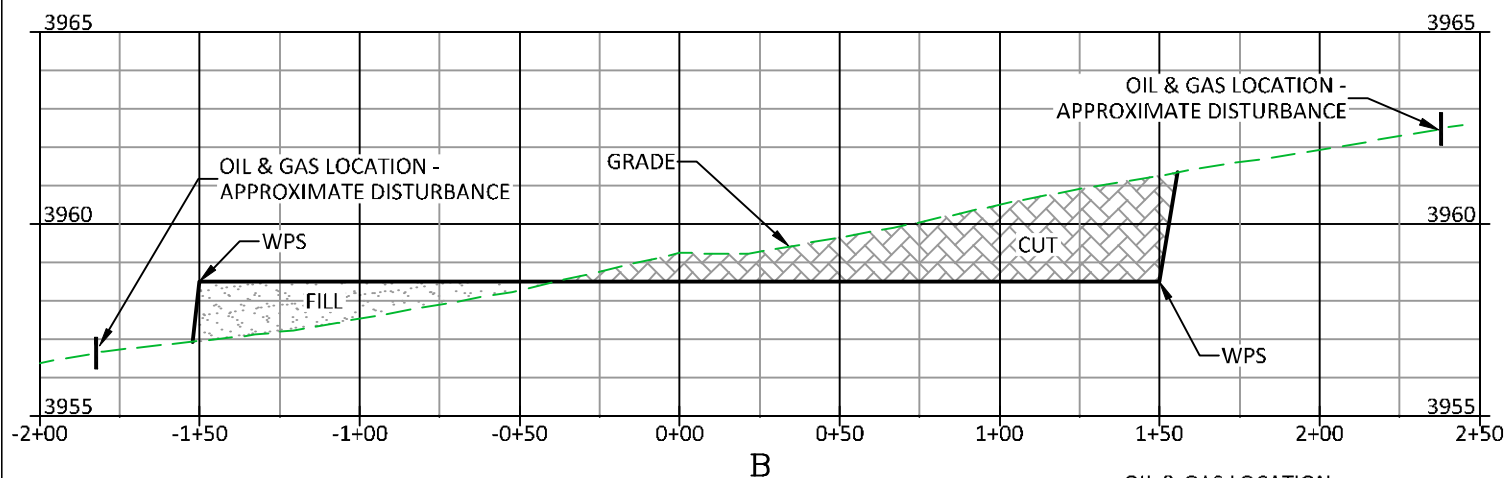
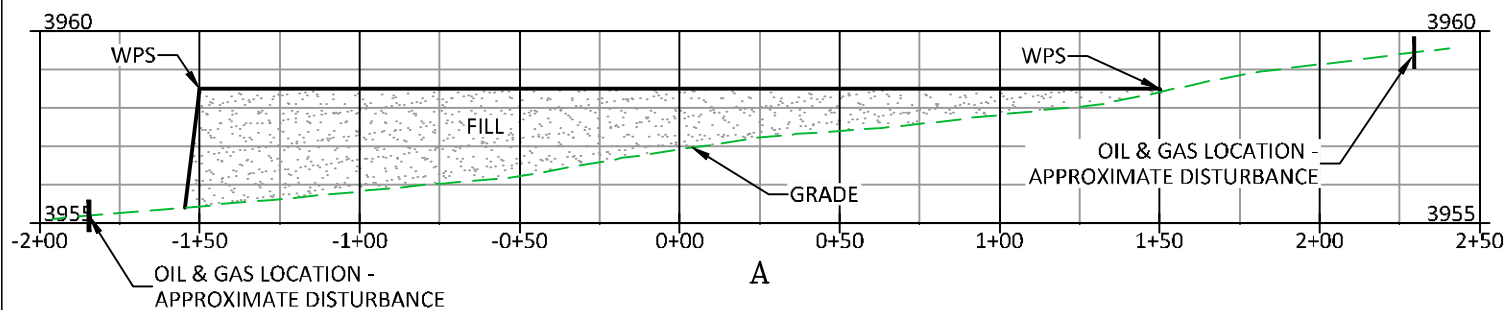
CONSTRUCTION LAYOUT DRAWING 1 OF 5

PLAN

WAVETECH HELIUM, INC.
#1 WAVETECH WULFF TRUST 43-5
NESE, SECTION 5, T. 15 S., R. 42 W., 6th P.M.,
CHEYENNE COUNTY, COLORADO

ESTIMATED EARTHWORK

	ITEM	CUT	FILL	TOPSOIL	EXCESS
DRAWN: 12/14/22 - DWB/JMB	PAD	3,414 CY	1,635 CY	1,756 CY	23 CY
REVISD: 3/12/24 - JMB	OTHER			502 CY	NONE
REVISD DISTURBANCE	TOTALS	3,414 CY	1,635 CY	2,259 CY	23 CY
SCALE: 1" = 60'					
DRG JOB No. 22304					
304b(7)Bi CONST					



CUT SLOPES - 2:1

FILL SLOPES - 1.5:1

#1 WAVETECH WULFF TRUST 43-5



RIFFIN & ASSOCIATES, INC.

(307) 362-5028

1414 ELK ST., ROCK SPRINGS, WY 82901

DRAWN: 12/14/22 - DWB/JMB

SCALE: H - 1" = 60' V - 1" = 5'

REVISED: 3/12/24 - JMB

DRG JOB No. 22304

REVISED DISTURBANCE

304b(7)Bi XSEC

CONSTRUCTION LAYOUT DRAWING 2 OF 5

**CONSTRUCTION LAYOUT DRAWING
CROSS-SECTIONS**

WAVETECH HELIUM, INC.

#1 WAVETECH WULFF TRUST 43-5

**NESE, SECTION 5, T. 15 S., R. 42 W., 6th P.M.,
CHEYENNE COUNTY, COLORADO**

UNGRADED ELEVATION: 3959.2'

FINAL ELEVATION: 3958.5'

PROPOSED AREA OF DISTURBANCE: 2.8± ACRES

AREA OF WORKING PAD SURFACE: 2.1± ACRES

PROPOSED ACCESS DISTURBANCE: 0.6± ACRES

PROPOSED
WULFF TRUST 43-5
FLOWLINE

PROPOSED ACCESS

INSTALL
SEDIMENT TRAP

INSTALL CULVERT

CONSTRUCT
BERM

CONSTRUCT
DITCH

WORKING PAD
SURFACE

CONSTRUCT
DITCH

#1 WAVETECH
WULFF TRUST 43-5

CONSTRUCT
DIVERSION DITCH

CONSTRUCT
DIVERSION DITCH

OIL & GAS LOCATION APPROX.
DISTURBANCE BOUNDARY (30' OFFSET)



#1 WAVETECH WULFF TRUST 43-5

DRG RIFFIN & ASSOCIATES, INC.
(307) 362-5028 1414 ELK ST., ROCK SPRINGS, WY 82901

DRAWN: 12/14/22 - DWB/JMB

SCALE: 1" = 60'

REVISED: 3/12/24 - JMB

DRG JOB No. 22304

REVISED DISTURBANCE

304b(7)BI DSGN CONT

CONSTRUCTION LAYOUT DRAWING 3 OF 5

CONSTRUCTION LAYOUT DRAWING
PLANNED CUT-FILL CONTOURS
WAVETECH HELIUM, INC.

#1 WAVETECH WULFF TRUST 43-5
NESE, SECTION 5, T. 15 S., R. 42 W., 6th P.M.,
CHEYENNE COUNTY, COLORADO

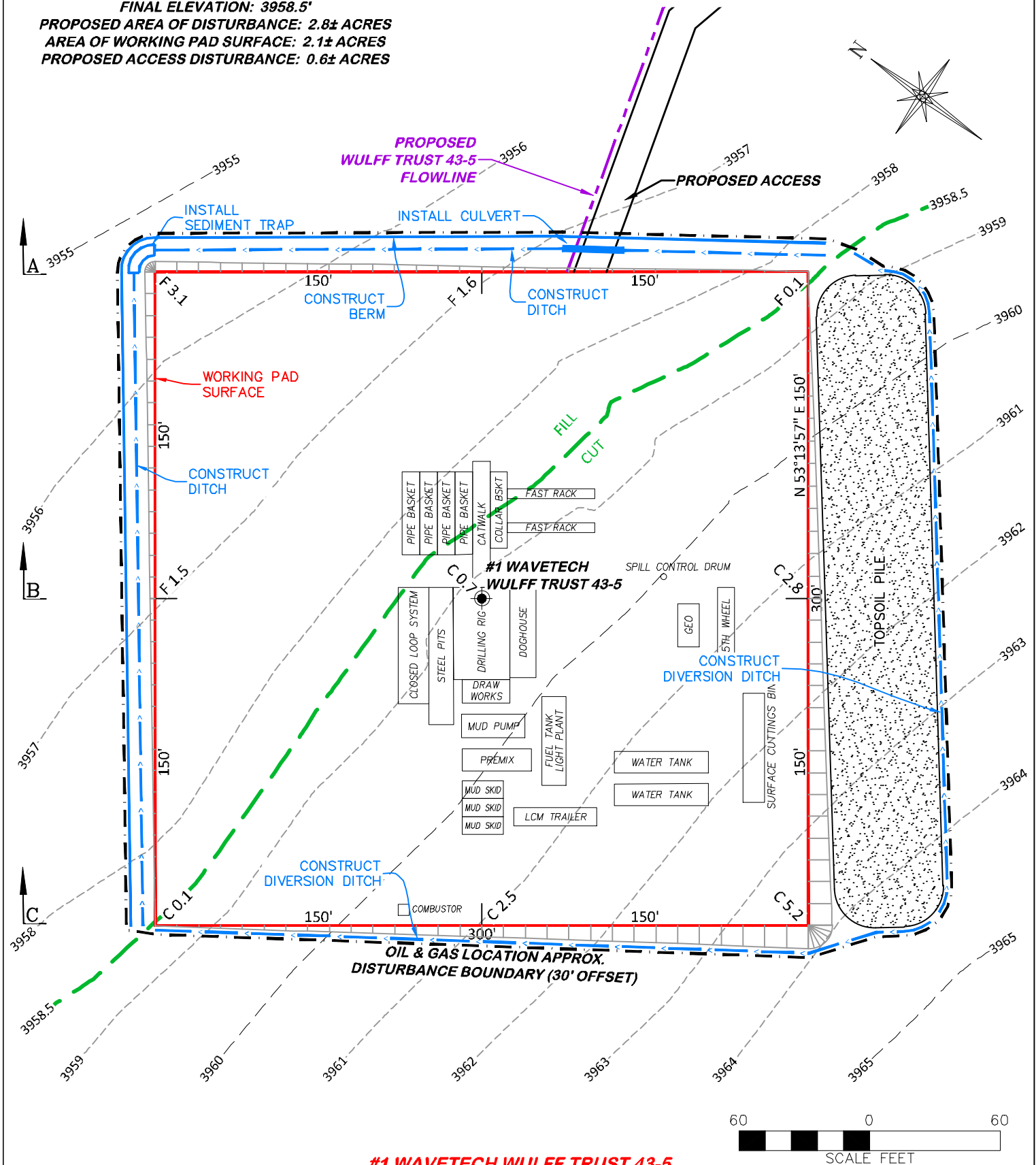
UNGRADED ELEVATION: 3959.2'

FINAL ELEVATION: 3958.5'

PROPOSED AREA OF DISTURBANCE: 2.8± ACRES

AREA OF WORKING PAD SURFACE: 2.1± ACRES

PROPOSED ACCESS DISTURBANCE: 0.6± ACRES



#1 WAVETECH WULFF TRUST 43-5

CONSTRUCTION LAYOUT DRAWING 4 OF 5



RIFFIN & ASSOCIATES, INC.

(307) 362-5028

1414 ELK ST., ROCK SPRINGS, WY 82901

**PRELIMINARY RIG LAYOUT DRAWING
WAVETECH HELIUM, INC.**

**#1 WAVETECH WULFF TRUST 43-5
NESE, SECTION 5, T. 15 S., R. 42 W., 6th P.M.,
CHEYENNE COUNTY, COLORADO**

DRAWN: 12/14/22 - DWB/JMB

SCALE: 1" = 60'

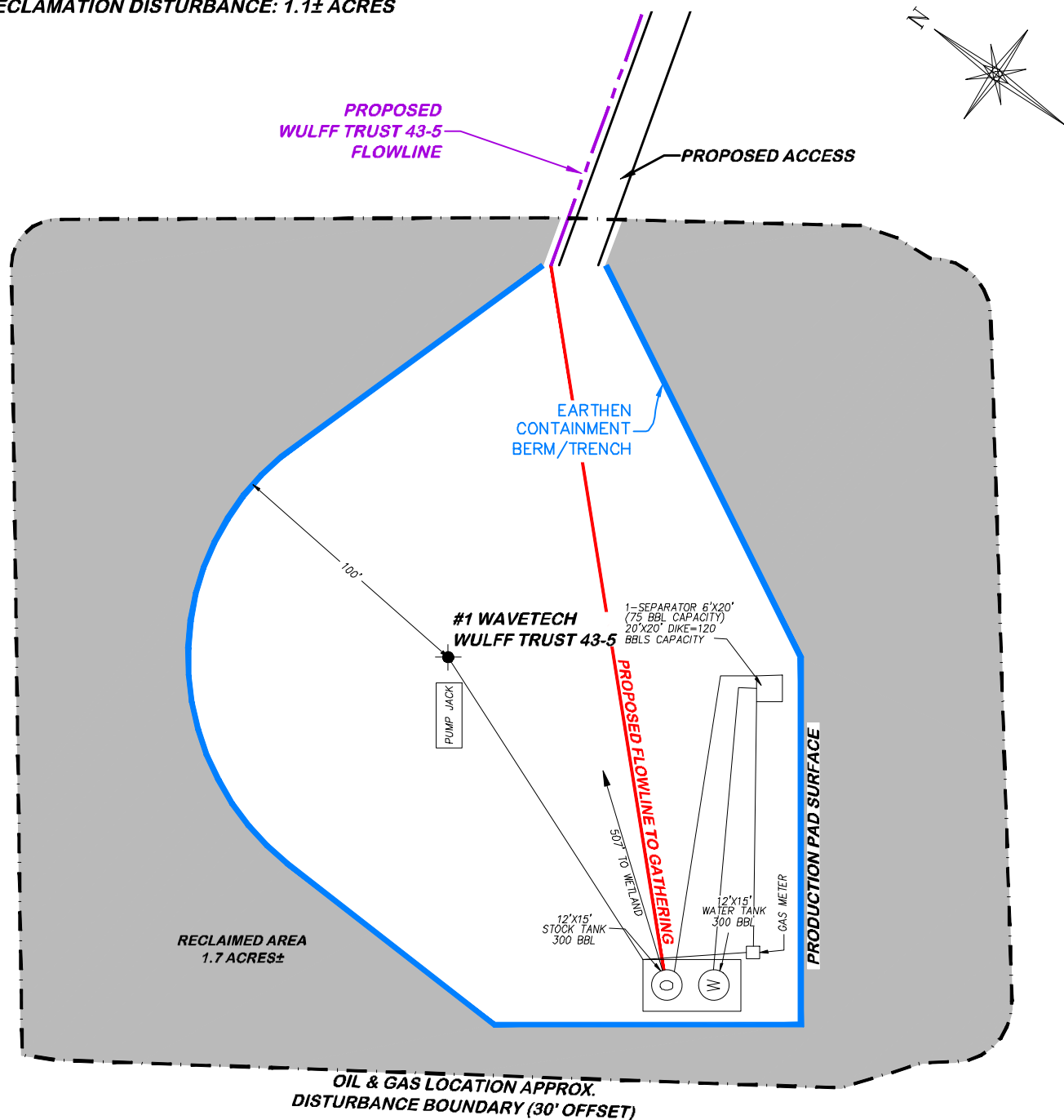
REVISED: 3/12/24 - JMB

DRG JOB No. 22304

REVISED DISTURBANCE

304b(7)Bii RIG

APPROXIMATE DISTURBANCE AREA 2.8± ACRES
 PROPOSED RECLAMATION AREA: 1.7± ACRES
 INTERIM RECLAMATION DISTURBANCE: 1.1± ACRES



#1 WAVETECH WULFF TRUST 43-5

60 0 60
 SCALE FEET



DRG RIFFIN & ASSOCIATES, INC.

(307) 362-5028

1414 ELK ST., ROCK SPRINGS, WY 82901

DRAWN: 12/14/22 - DWB/JMB

SCALE: 1" = 60'

REVISED: 3/12/24 - JMB

DRG JOB No. 22304

REVISED DISTURBANCE

304b(7)Bv FACILITY

CONSTRUCTION LAYOUT DRAWING 5 OF 5

FACILITY LAYOUT DRAWING
WAVETECH HELIUM, INC.
#1 WAVETECH WULFF TRUST 43-5
NESE, SECTION 5, T. 15 S., R. 42 W., 6th P.M.,
CHEYENNE COUNTY, COLORADO