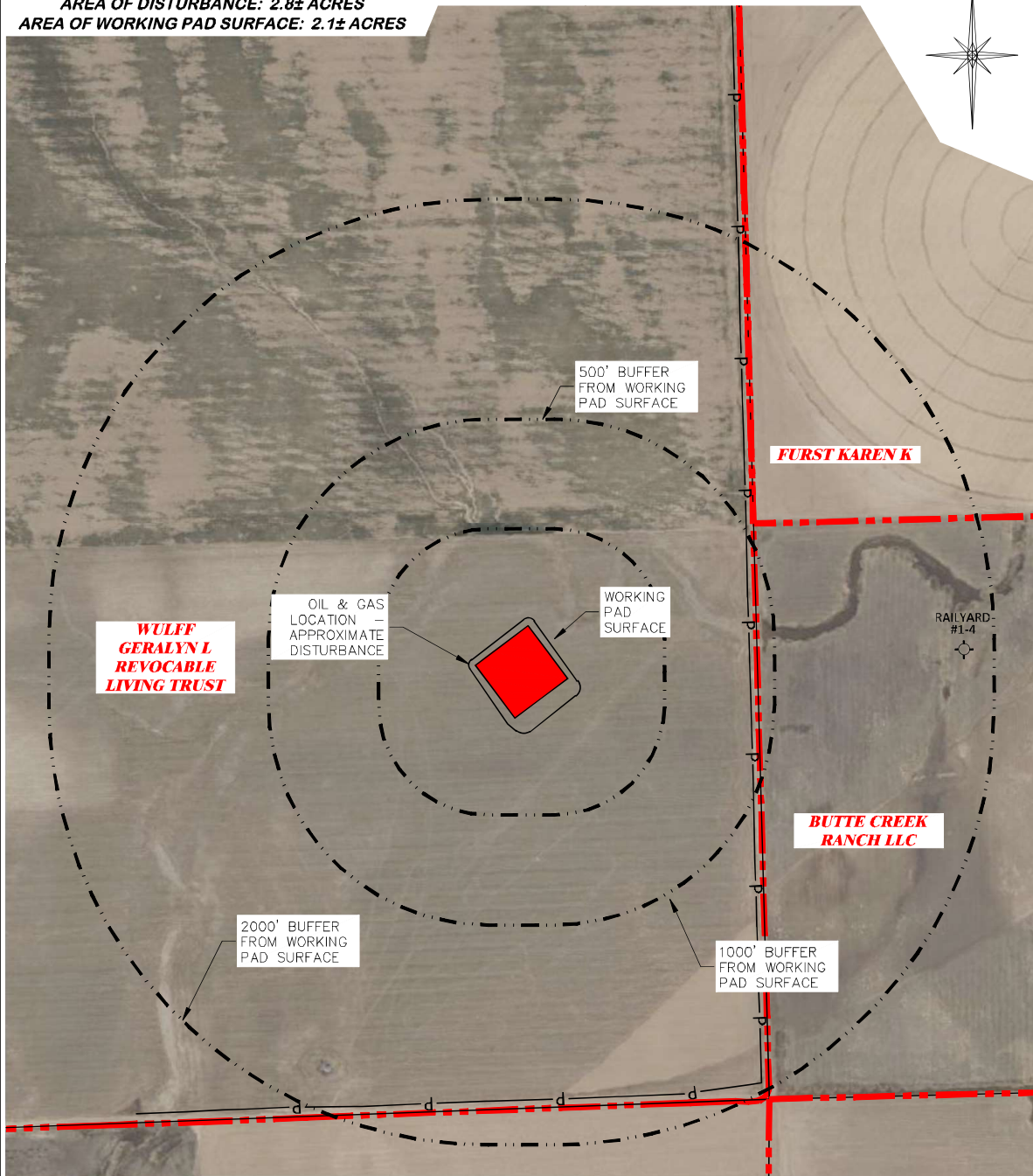


UNGRADED ELEVATION: 3959.2'
 FINAL ELEVATION: 3958.5'
 AREA OF DISTURBANCE: 2.8± ACRES
 AREA OF WORKING PAD SURFACE: 2.1± ACRES



CULTURAL ITEMS:	
MEASURED FROM NEAREST EDGE OF THE PROPOSED WORKING PAD SURFACE	
BUILDING	3391' NE
RESIDENTIAL BUILDING	5280' N
HIGH OCCUPANCY BUILDING	5280' N
DOAA	5280' N
PUBLIC ROAD	852' E
ABOVE GROUND UTILITY	830' E
RAILROAD	5280' N
PROPERTY LINE	864' E
SCHOOL FACILITY	5280' N
SCHOOL PROPERTY LINE	5280' N
CHILD CARE FACILITY	5280' N
CHILD CARE PROPERTY LINE	5280' N
DI COMMUNITY	5280' N

CULTURAL FEATURE INFORMATION			
PRODUCTION FEATURE	0-500 FEET	501-1,000 FEET	1,001-2,000 FEET
	NUMBER	NUMBER	NUMBER
BUILDING	0	0	0
RESIDENTIAL BUILDING	0	0	0
HIGH OCCUPANCY BUILDING	0	0	0
SCHOOL PROPERTIES	0	0	0
SCHOOL FACILITIES	0	0	0
DOAA	0	0	0



#1 WAVETECH WULFF TRUST 43-5

DRG RIFFIN & ASSOCIATES, INC.
 (307) 362-5028 1414 ELK ST., ROCK SPRINGS, WY 82901

DRAWN: 12/14/22 - DWBJMB	SCALE: 1" = 600'
REVISED: 2/6/24 - JMB	DRG JOB No. 22304
UPDATED TABLE	304b(3)C CULTURAL

CULTURAL DISTANCES DRAWING

CULTURAL DISTANCES
WAVETECH HELIUM, INC.
#1 WAVETECH WULFF TRUST 43-5
NESE, SECTION 5, T. 15 S., R. 42 W., 6th P.M.,
CHEYENNE COUNTY, COLORADO