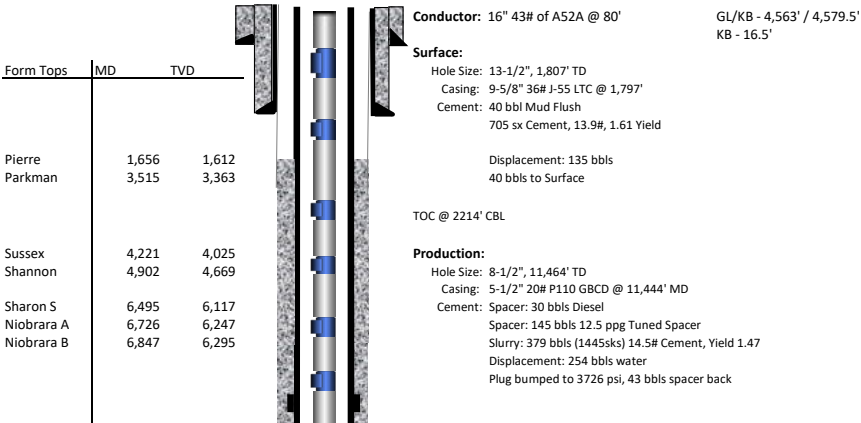


Confluence DJ LLC
Bigfoot 11-12-2
Producing Formation: Niobrara B
05-123-51760
NWSW 11-4N-63W
Weld County, CO

SB Crossing		MD	TVD
TOE	564' FSL, 460' FEL	11,435	6,339
HEEL	583' FSL, 460' FWL	7,029	6,337



Date: 7/28/2024



Dates
8/5/2022
9/3/2022
9/3/2022
9/3/2022

Frac Summary: Finished 04/27/2023

Stages	Vol. Fluid (bbls)	Total Prop (lbs)	Ave Rate	Average PSI	Max PSI	Shallowest Perf	Deepest Perf	Completed Length
22	151,158	5,991,290	77.1	5,692	8,249	7,039	11,378	4,339

Tubing:
2-3/8" Tbg, L-80
189' jnts
Tbg and GLVs Mix
Packer: 6202'
EOT: 6203'

Directional Data	MD	TVD	
KOP	5,783	5,495	13°
30°	6,258	5,936	
60°	6,688	6,230	
460' Set Back:	7,029	6,337	88°
Landing 90°	7,226	6,341	91°

	Float Sub	Toe Sleeve	460' SB	Float Collar (PBSD)	Float Shoe	TD
MD (ft):	5,646	11,414	11,435	11,428	11,440	11,464
TVD (ft):	5,366	6,339	6,339	6,339	6,339	6,339

