



Hornet 0136 Pad

304.c.(6): Transportation Plan

Weld County does not require a traffic plan, but the below information is provided to Weld County as part of the WOGLA required information.

Total Annual Truck Trips for the location are listed below

Construction: 756 Trips

Drilling: 1606 Trips

Completions: 9460 Trips

Interim reclamation: 96 Trips

Production: 413 Trips for the first year of production

1) The estimated duration at this oil and gas location will be 14 days for pad construction, 49 days for drilling operations, Completion and flowback operations are 66 days (39 for hydraulic fracturing and 27 days for flowback).

Average traffic during construction:

5-20 belly dumps making 3-4 round trips per day. Initial move in to include loaders and other heavy equipment.

Average traffic during drilling:

During the first two days and last two days of Drilling Operations, the expected number of per day roundtrips will be approximately 20-25 Passenger Cars/Pickups and 20-25 Semi- Truck/Trailer. For the remaining 45 days, Passenger Car/Pickup vehicles will be reduced to 10-15 trips per day and Tandem Truck trips will be approximately 15-20 trips per day.

Average traffic during completion:

During the first two days and last two days of Completions Operations, the expected number of per day roundtrips will be approximately 30 Passenger Cars/Pickups and 50 Semi- Truck/Trailer.

During the actual hydraulic fracturing activity which will begin after the initial two days and the last two days for rig move; for the remaining next 35 days, there will be approximately 30 Passenger Cars/Pickups and 160-170 Semi-Truck/Trailer roundtrips per day.



During the drill-out phase which will begin after the hydraulic fracturing activity described above and consist of the next 27 days, there will be approximately 15 Passenger Cars/Pickups and 70-80 Semi- Truck/Trailer roundtrips per day.

Average traffic during production operations:

One pumper visit per day, pickup truck. Water and Oil Haulers to be called as needed.

- 2) The expected travel routes or haul routes for the site traffic.

Starting at the intersection of HWY 14 and WCR 95, proceed north for 3.0 miles on WCR 95. Turn east on WCR 96 for 1.0 miles to an existing access road and proceed north approximately 0.4 mile to the proposed Hornet location on the east.

- 3) The travel distribution along the routes (e.g. 80% of traffic will come from the west, 20% from the south, 30% from the east, etc.).

Roughly 100% of the traffic will come from the west on WCR 96

- 4) The time of day when the highest traffic volumes are expected.

The first 2 days and the last 2 days of both drilling and completions operations traffic is expected to be the highest. On a daily schedule 5:00 am and 5:00 pm will have the highest volumes. As these times are typically shift change for the Vendors on location.

- 5) Describe site specific traffic reduction measures that will be utilized.

Verdad has committed to a fresh water pipeline at the Hornet location. Typical fresh water truck traffic is approximately 1783 trucks per mile of lateral of well. The Hornet is a 9 well pad with (9) 2.0-mile laterals, resulting in a reduction of 32,094 trucks.

Verdad has an agreement in place and is finalizing commercial terms for a crude oil line. The following is a breakdown of truck traffic reduction over the course of a 10-year life of the wells on the Hornet location. Over 10 years these 9 wells are in service a crude oil pipeline will reduce truck traffic by 8,793 trucks.

- 1st Year: 4,465 Trucks
- 2nd -3rd Years: 2,330 Trucks
- 4th -5th Years: 916 Trucks
- 6th-10th Years 1,082 Trucks

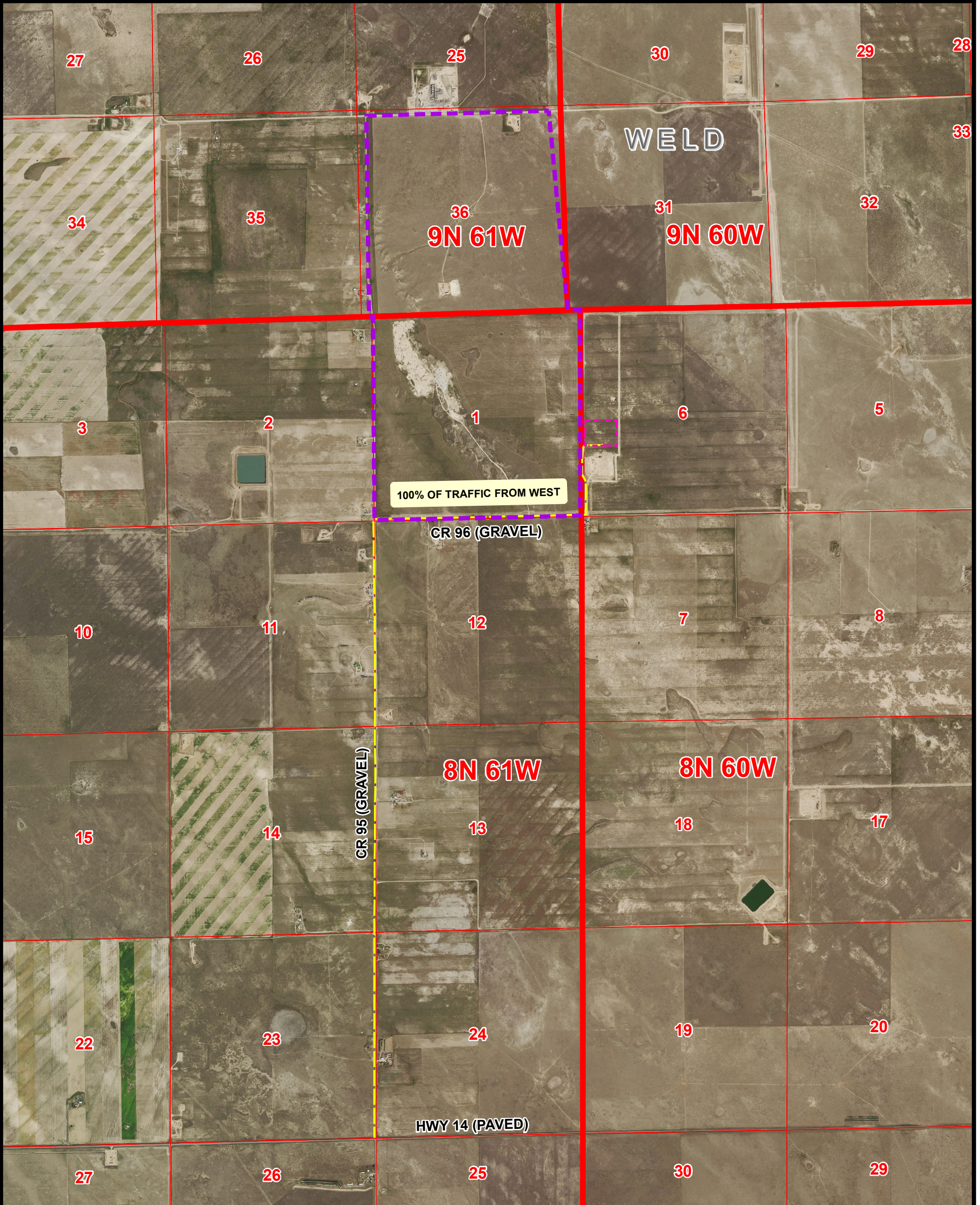
Verdad has an agreement in place and is finalizing commercial terms for a produced **water pipeline** by the time production begins. The following is a breakdown of truck traffic reduction



over the course of a 10-year life of the wells on the Hornet location. Over 10 years these 9 wells are in service a water pipeline has the potential to reduce truck traffic by 8042 trucks.

- 1st Year: 4,899 Trucks
- 2nd -3rd Years: 1,752 Trucks
- 4th -5th Years: 662 Trucks
- 6th-10th Years: 729 Trucks

ACCESS ROAD MAP
HORNET 0136
 SECTION 1, T8N, R61W, SECTION 36, T9N, R61W
 & SECTION 6, T8N, R60W 6TH P.M., WELD COUNTY, COLORADO



Legend

- ACCESS ROAD HAUL ROUTE
- PROPOSED DEVELOPMENT AREA
- PROPOSED OIL & GAS LOCATION

DRIVING DIRECTIONS:
 Beginning at the intersection of HWY 14 and CR 95, proceed in a northerly direction approximately 3.0 miles along CR 95 to the intersection of CR 96 to the east. Exit right onto CR 96 and proceed in an easterly direction approximately 1.0 miles along CR 96 to the intersection of an existing access road to the north. Exit left onto the existing access road and proceed in a northerly direction approximately 0.4 miles to the Hornet 0136 access road to the east. Exit right onto the access road and continue east to the Hornet 0136 location.

NOTE:
 THIS MAP IS A COMPILATION OF PUBLICLY AVAILABLE DATA. THE ACCURACY AND COMPLETENESS OF SAID DATA HAS NOT BEEN VERIFIED BY 609 CONSULTING, LLC. EXISTING CONDITIONS MAY DIFFER FROM WHAT IS SHOWN.



VERDAD RESOURCES

1125 17th Street, Suite 550
 Denver, Colorado 80202



609 Consulting, LLC

LOVELAND OFFICE
 6706 North Franklin Avenue
 Loveland, Colorado 80538
 Phone: 970-776-4331

SHERIDAN OFFICE
 1095 Saberton Avenue
 Sheridan, Wyoming 82801
 Phone: 307-674-0609



N

Drawn by: AK
Revised: KG

Date: 1 Dec 2023
Date: 19 Apr 2024

NAD83 CO-Nft
Scale: 1" = 2,500ft

K:\VERDAD\2023_145_HUNT_T8N_R60W_SEC_6\GIS\FORM 2\HORNET_MAP\HORNET_PAD_HAUL_ACCESS_ROUTE_MAP.mxd 4/10/2024 4:28:37 PM