



Hornet 0136

304.c.(5) Dust Mitigation Plan

In accordance with Rule 427, the Operator provides the following information outlining existing conditions at the proposed Oil and Gas location.

- (1)** Soil Type on Pad and Road
 - A.** NRCS 44 Olney fine sandy loam, 0 to 6 percent slope (Pad and road)
 - B.** NRCS 54 Platner Loam, 0 to 3 percent slope (Pad and road)
- (2)** Vehicle speed limit be under 25 mph to minimize dust;
- (3)** Total Area of Soil Disturbance
 - A.** NRCS 44 Olney fine sandy loam, 0 to 6 percent slope (10.08 acres)
 - B.** NRCS 54 Platner 0 to 3 percent slope (2.96)
- (4)** The existing and proposed access road is/will be gravel.
- (5)** Number of anticipated truck trips for a 12 acre well pad and the drilling, completion and production of 9 horizontal wells.
 - Construction: 756 Trips
 - Drilling: 1606 Trips
 - Completion: 9460 Trips
 - Interim Reclamation: 96 Trips
 - Production: 413*
- (6)** A plan for suppressing fugitive dust caused solely by wind;

Restriction of construction activity during high-wind days. On windy days or days when dust becomes fugitive (leaves or threatens to leave the site) construction or activities will be halted until either fresh water can suppress dust or dust is no longer visible.

- (7)** A list of Best Management Practices that will be used. Such practices may include, but are not limited to:



- Operator will stabilize the topsoil stockpiles utilizing vehicle tracking perpendicular to slope angle for short term stabilization and drill seed/crimped straw mulch application for longer term stabilization measures to suppress fugitive dust caused by wind.
- Operator will reduce traffic and dust associated by transporting completions water using a lay flat temporary line and an MLVT for fresh water storage.
- The access road will be covered with a minimum of 2" of road base material for stabilization and to mitigate dust. Per the approved 1041WOGLA, water or magnesium chloride will be used to mitigate dust impacts during initial construction of the drill site and may be restricted or limited during high-wind days. To control dust, we will reduce speed on unpaved public roads. If there is any additional dust after the above measures have been taken, we will employ water trucks to mitigate dust. Dust control on unpaved county roads will be conducted in coordination with Public Works.
- Restriction of construction activity during high-wind days. On windy days or days when dust becomes fugitive (leaves or threatens to leave the site) construction or activities will be halted until either fresh water can suppress dust or dust is no longer visible.
- Use of a gravity fed box proppant delivery system that meets OSHA standards, rather than the historic pneumatic trailer proppant transfer system that blows sand out of the trailer into frac sand silos on the location; a method that required supplemental dust control to meet OSHA requirements. With a gravity fed proppant delivery system, the delivery container is also a well pad storage container, eliminating the need for frac sand silos on location. Storing frac sand in containers reduces sand dust during fracing operations by dropping sand directly from the container into the blender sand hopper.
- A gas gathering line, crude oil line and produced water line are planned for this location.
- Verdad will be utilizing centralized storage facilities for fresh water, allowing us to limit the number of truck trips on and off location. During drilling operations all continuous operations personnel live on location. During completions operations a Verdad supervisor lives on location, a majority of the frac crews travel via bus. All of the above will substantially reduce truck traffic. In addition, logistical traffic management will be conducted in a manner that loads will be minimized as the opportunity allows.
- Maximum speed on all roads constructed and maintained by the operator will not exceed 25 mph.

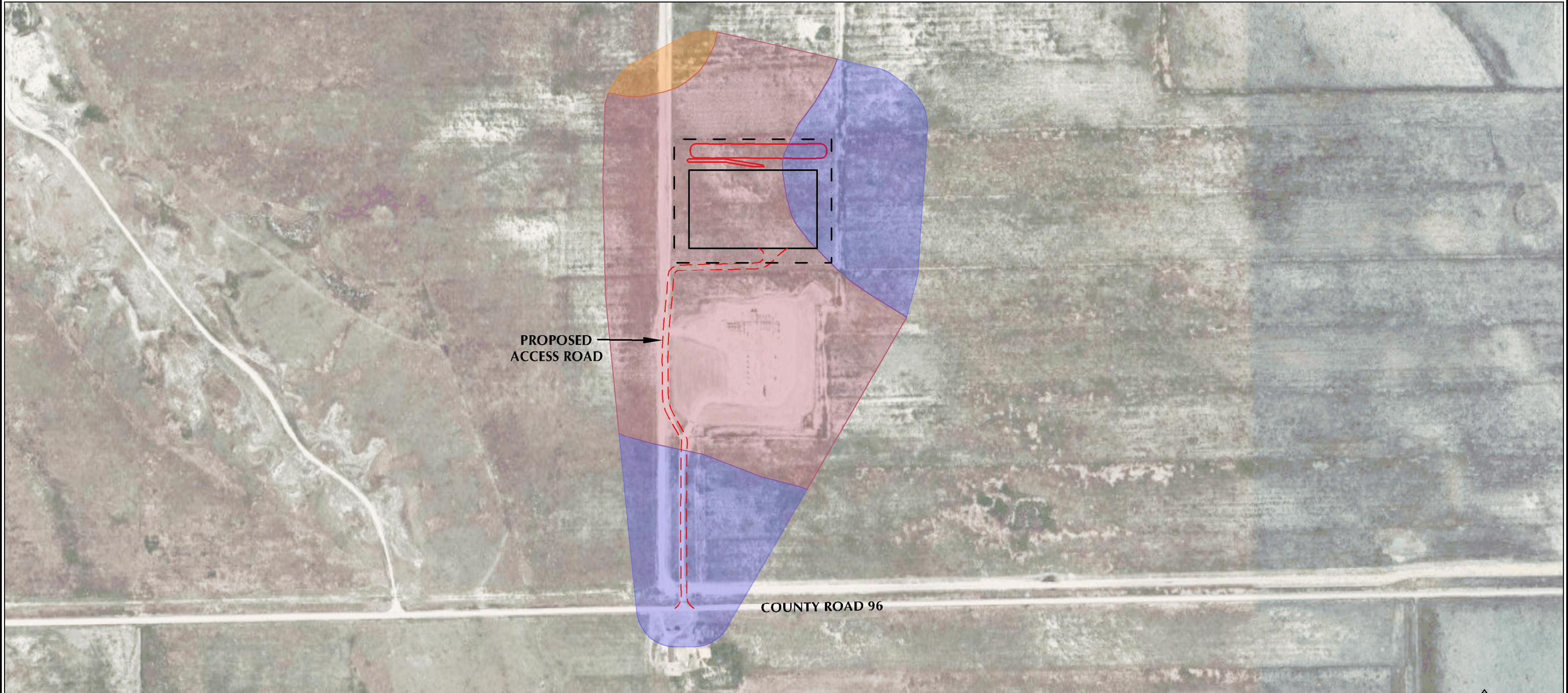


*Annual production trips

ACCESS ROAD - NRCS MAP

HORNET 0136

NW1/4 SW1/4 SECTION 6, TOWNSHIP 8 NORTH, RANGE 60 WEST, 6TH P.M., WELD COUNTY, COLORADO



EXISTING ROAD SOIL DISTURBANCE ACREAGE:

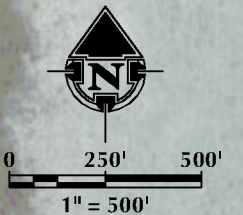
PLATNER LOAM (0-3% SLOPE) HYDROLOGIC SOIL GROUP C	±0.44 ACRES
OLNEY FINE SANDY LOAM (0-6% SLOPE) HYDROLOGIC SOIL GROUP B	±0.26 ACRES

NEW/IMPROVED PROPOSED ROAD SOIL DISTURBANCE ACREAGE:

PLATNER LOAM (0-3% SLOPE) HYDROLOGIC SOIL GROUP C	±0.15 ACRES
OLNEY FINE SANDY LOAM (0-6% SLOPE) HYDROLOGIC SOIL GROUP B	±0.89 ACRES

PROPOSED OIL & GAS LOCATION SOIL DISTURBANCE ACREAGE:

PLATNER LOAM (0-3% SLOPE) HYDROLOGIC SOIL GROUP C	±2.81 ACRES
OLNEY FINE SANDY LOAM (0-6% SLOPE) HYDROLOGIC SOIL GROUP B	±9.19 ACRES



LEGEND

PROPOSED OIL & GAS LOCATION	OLNEY FINE SANDY LOAM (0-6% SLOPE) HYDROLOGIC SOIL GROUP B
PROPOSED WORKING PAD SURFACE	PLATNER LOAM (0-3% SLOPE) HYDROLOGIC SOIL GROUP C
TOPSOIL STOCKPILE	NUNN LOAM (0-6% SLOPE) HYDROLOGIC SOIL GROUP C
PROPOSED ACCESS ROAD	

609 CONSULTING, LLC

LOVELAND OFFICE
6706 North Franklin Avenue
Loveland, Colorado 80538
Phone 970-776-4331

SHERIDAN OFFICE
1095 Saberton Avenue
Sheridan, Wyoming 82801
Phone 307-674-0609

VERDAD RESOURCES

1125 17th Street, Suite 550
Denver, Colorado 80202

SCALE: 1" = 500'

DATE SURVEYED: 4/3/24

DATE: 4/24/24

DRAFTER: SJM

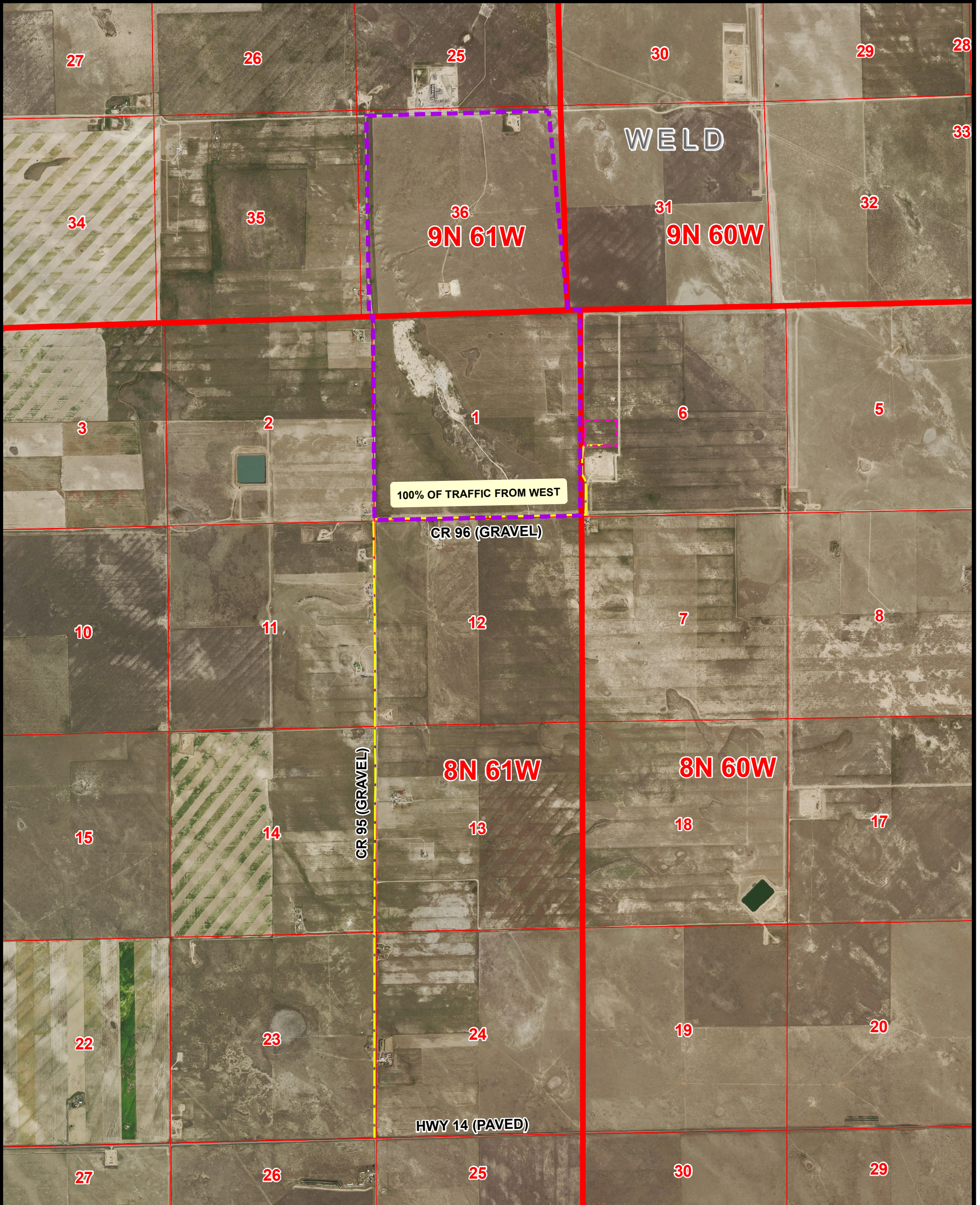
REVISED:

NOTE:

1. SOIL CLASSIFICATION COURTESY OF NRCS.

K:\VERDAD\2023_1_05_HORNET_T8N_R60W_SEC_01\DRAWING\HORNET_0136_0124_225058.PLA_sundberg

ACCESS ROAD MAP
HORNET 0136
 SECTION 1, T8N, R61W, SECTION 36, T9N, R61W
 & SECTION 6, T8N, R60W 6TH P.M., WELD COUNTY, COLORADO



K:\VERDAD\2023_145_HUNT_T8N_R60W_SEC_6\GIS\FORM 2\HORNET_MAP\HORNET_PAD_HAUL_ACCESS_ROUTE_MAP.mxd 4/10/2024 4:28:37 PM

Legend

- ACCESS ROAD HAUL ROUTE
- PROPOSED DEVELOPMENT AREA
- PROPOSED OIL & GAS LOCATION

DRIVING DIRECTIONS:
 Beginning at the intersection of HWY 14 and CR 95, proceed in a northerly direction approximately 3.0 miles along CR 95 to the intersection of CR 96 to the east. Exit right onto CR 96 and proceed in an easterly direction approximately 1.0 miles along CR 96 to the intersection of an existing access road to the north. Exit left onto the existing access road and proceed in a northerly direction approximately 0.4 miles to the Hornet 0136 access road to the east. Exit right onto the access road and continue east to the Hornet 0136 location.

NOTE:
 THIS MAP IS A COMPILATION OF PUBLICLY AVAILABLE DATA. THE ACCURACY AND COMPLETENESS OF SAID DATA HAS NOT BEEN VERIFIED BY 609 CONSULTING, LLC. EXISTING CONDITIONS MAY DIFFER FROM WHAT IS SHOWN.



1125 17th Street, Suite 550
Denver, Colorado 80202

 609 Consulting, LLC	LOVELAND OFFICE 6706 North Franklin Avenue Loveland, Colorado 80538 Phone 970-776-4331 SHERIDAN OFFICE 1095 Saberton Avenue Sheridan, Wyoming 82801 Phone 307-674-0609	 NAD83 CO-Nft Scale: 1" = 2,500ft
Drawn by: AK Revised: KG	Date: 1 Dec 2023 Date: 19 Apr 2024	