

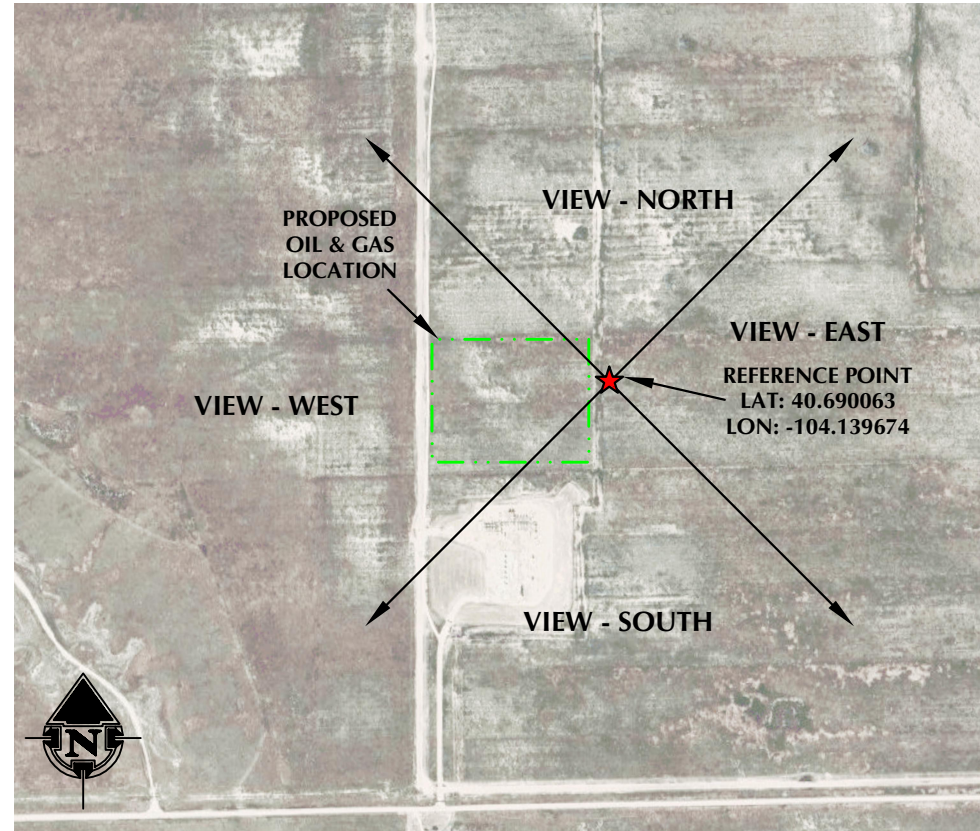
REFERENCE AREA PICTURES
HORNET 0136

NW1/4 SW1/4 SECTION 6, TOWNSHIP 8 NORTH, RANGE 60 WEST, 6TH P.M., WELD COUNTY, COLORADO



VIEW - NORTH

2024-04-03 09:32



VIEW - OVERHEAD
 AERIAL IMAGERY COURTESY OF ESRI, INC.



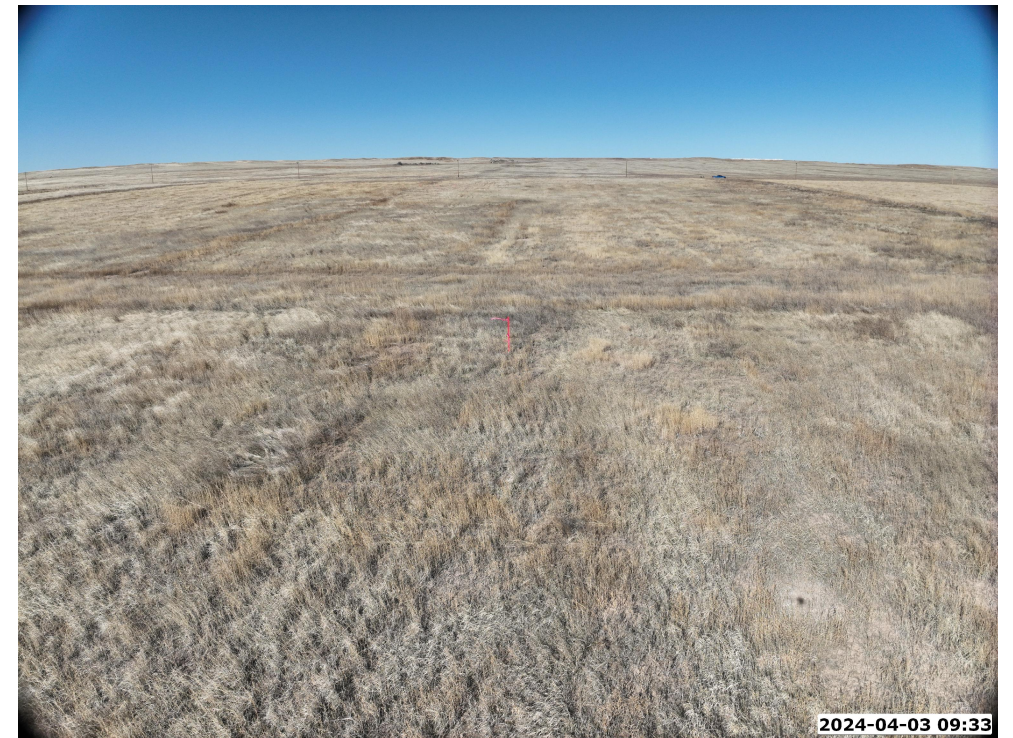
VIEW - EAST

2024-04-03 09:33



VIEW - SOUTH

2024-04-03 09:33



VIEW - WEST

2024-04-03 09:33

K:\VERDAD\2023_145_HUNT_TBN_R60W_SEC_6\DWG\HUNT_TBN_R60W_SEC_6.dwg 4/24/2024 7:27:03 AM ssaunberg



LOVELAND OFFICE
 6706 North Franklin Avenue
 Loveland, Colorado 80538
 Phone 970-776-4331

SHERIDAN OFFICE
 1095 Saberton Avenue
 Sheridan, Wyoming 82801
 Phone 307-674-0609

CONSULTING, LLC



1125 17th Street, Suite 550
 Denver, Colorado 80202

DATE SURVEYED: 4/3/24
 DATE: 4/24/24
 DRAFTER: CJF
 REVISED:

DATA SOURCES:
 -AERIAL IMAGERY COURTESY OF ESRI, INC.

REFERENCE AREA PICTURES

HORNET 0136

NW1/4 SW1/4 SECTION 6, TOWNSHIP 8 NORTH, RANGE 60 WEST, 6TH P.M., WELD COUNTY, COLORADO



VIEW - OVERHEAD (DRONE)



VIEW - CLOSE UP

K:\VERDAD\2023_145_HUNT_TBN_TBN_R60W_SEC_6\DWG\HUNT_TBN_R60W_SEC_6.dwg, 4/24/2024 7:06:50 AM, saundberg



LOVELAND OFFICE
6706 North Franklin Avenue
Loveland, Colorado 80538
Phone 970-776-4331

SHERIDAN OFFICE
1095 Saberton Avenue
Sheridan, Wyoming 82801
Phone 307-674-0609

CONSULTING, LLC



1125 17th Street, Suite 550
Denver, Colorado 80202

DATE SURVEYED: 4/3/24
DATE: 4/24/24
DRAFTER: CJF
REVISED: