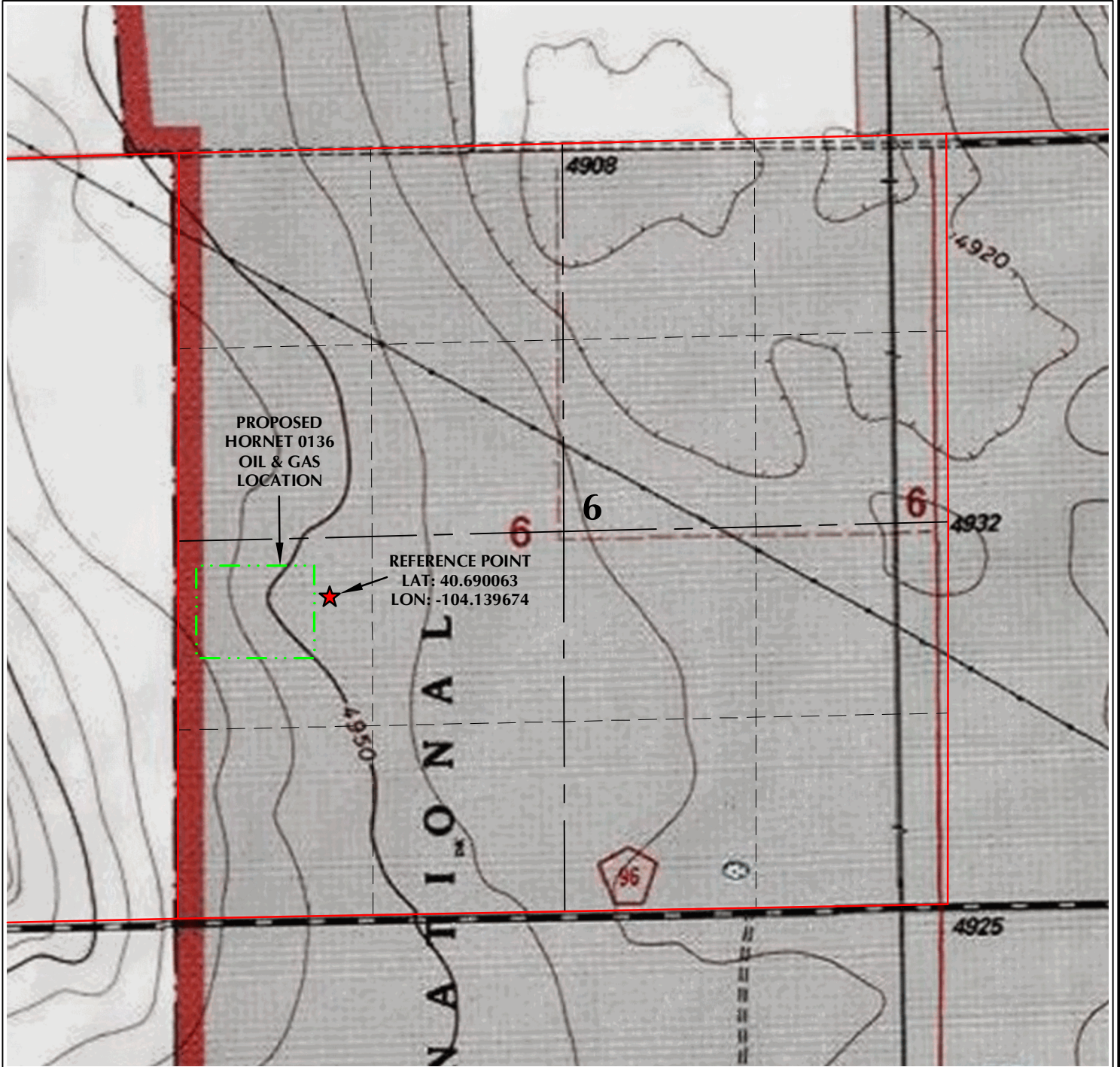


# REFERENCE AREA MAP

## HORNET 0136

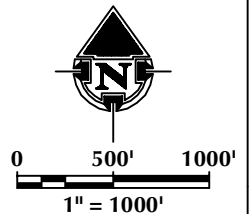
NW1/4 SW1/4 SECTION 6, TOWNSHIP 8 NORTH, RANGE 60 WEST, 6TH P.M., WELD COUNTY, COLORADO



### LEGEND

- PROPOSED OIL & GAS LOCATION
- SECTION LINE
- SECTION 1/4 LINE
- SECTION 1/4 1/4 LINE
- REFERENCE POINT

LAND USE: RANGELAND



K:\VERDAD\2023\_145\_HUNT\_T8N\_R60W\_SEC\_6D\WG\HUNT\_T8N\_R60W\_SEC\_6.dwg, 4/24/2024 7:22:00 AM, sandberg



**609 CONSULTING, LLC**  
LOVELAND OFFICE  
6706 North Franklin Avenue  
Loveland, Colorado 80538  
Phone 970-776-4331

SHERIDAN OFFICE  
1095 Saberton Avenue  
Sheridan, Wyoming 82801  
Phone 307-674-0609

DATE SURVEYED: 4/3/24  
DATE: 4/24/24  
DRAFTER: SJM  
REVISED:

DATA SOURCES:  
- TOPOGRAPHIC MAP IS COURTESY  
OF USGS

PREPARED FOR:  
**Verdad Resources**