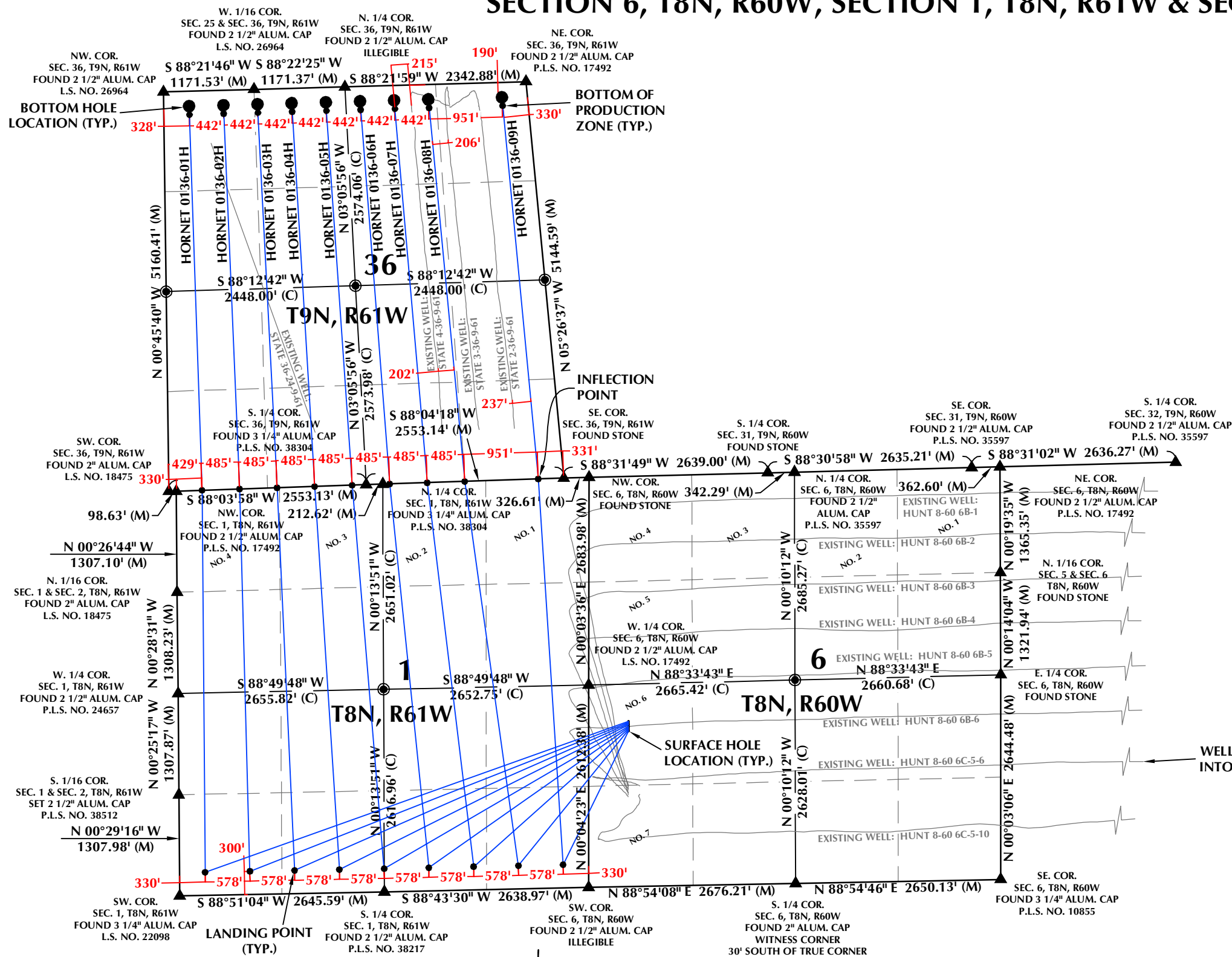


# DIRECTIONAL WELL PLAT (ECMC) / MULTI-WELL PLAN (OGED)

## SECTION 6, T8N, R60W, SECTION 1, T8N, R61W & SECTION 36, T9N, R61W, 6TH P.M.



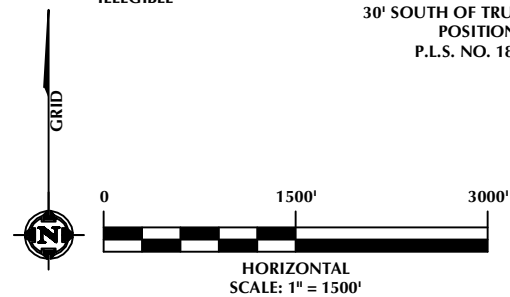
**WELL NOTES:**

- HORNET 0136-01H**  
 SURFACE HOLE LOCATION: 2136' FSL, 514' FWL (SEC. 6, T8N, R60W)  
 LANDING POINT: 300' FSL, 330' FWL (SEC. 1, T8N, R61W)  
 BOTTOM OF PRODUCTION ZONE: 300' FNL, 330' FWL (SEC. 36, T9N, R61W)  
 BOTTOM HOLE LOCATION: 190' FNL, 328' FWL (SEC. 36, T9N, R61W)
- HORNET 0136-02H**  
 SURFACE HOLE LOCATION: 2120' FSL, 514' FWL (SEC. 6, T8N, R60W)  
 LANDING POINT: 300' FSL, 908' FWL (SEC. 1, T8N, R61W)  
 BOTTOM OF PRODUCTION ZONE: 300' FNL, 773' FWL (SEC. 36, T9N, R61W)  
 BOTTOM HOLE LOCATION: 190' FNL, 769' FWL (SEC. 36, T9N, R61W)
- HORNET 0136-03H**  
 SURFACE HOLE LOCATION: 2104' FSL, 514' FWL (SEC. 6, T8N, R60W)  
 LANDING POINT: 300' FSL, 1487' FWL (SEC. 1, T8N, R61W)  
 BOTTOM OF PRODUCTION ZONE: 300' FNL, 1215' FWL (SEC. 36, T9N, R61W)  
 BOTTOM HOLE LOCATION: 190' FNL, 1211' FWL (SEC. 36, T9N, R61W)
- HORNET 0136-04H**  
 SURFACE HOLE LOCATION: 2088' FSL, 514' FWL (SEC. 6, T8N, R60W)  
 LANDING POINT: 300' FSL, 2065' FWL (SEC. 1, T8N, R61W)  
 BOTTOM OF PRODUCTION ZONE: 300' FNL, 1658' FWL (SEC. 36, T9N, R61W)  
 BOTTOM HOLE LOCATION: 190' FNL, 1653' FWL (SEC. 36, T9N, R61W)
- HORNET 0136-05H**  
 SURFACE HOLE LOCATION: 2072' FSL, 514' FWL (SEC. 6, T8N, R60W)  
 LANDING POINT: 300' FSL, 2644' FWL (SEC. 1, T8N, R61W)  
 BOTTOM OF PRODUCTION ZONE: 300' FNL, 2100' FWL (SEC. 36, T9N, R61W)  
 BOTTOM HOLE LOCATION: 190' FNL, 2094' FWL (SEC. 36, T9N, R61W)
- HORNET 0136-06H**  
 SURFACE HOLE LOCATION: 2056' FSL, 514' FWL (SEC. 6, T8N, R60W)  
 LANDING POINT: 300' FSL, 2065' FEL (SEC. 1, T8N, R61W)  
 BOTTOM OF PRODUCTION ZONE: 300' FNL, 2162' FEL (SEC. 36, T9N, R61W)  
 BOTTOM HOLE LOCATION: 190' FNL, 2160' FEL (SEC. 36, T9N, R61W)
- HORNET 0136-07H**  
 SURFACE HOLE LOCATION: 2040' FSL, 514' FWL (SEC. 6, T8N, R60W)  
 LANDING POINT: 300' FSL, 1487' FEL (SEC. 1, T8N, R61W)  
 BOTTOM OF PRODUCTION ZONE: 300' FNL, 1721' FEL (SEC. 36, T9N, R61W)  
 BOTTOM HOLE LOCATION: 190' FNL, 1720' FEL (SEC. 36, T9N, R61W)
- HORNET 0136-08H**  
 SURFACE HOLE LOCATION: 2024' FSL, 514' FWL (SEC. 6, T8N, R60W)  
 LANDING POINT: 300' FSL, 908' FEL (SEC. 1, T8N, R61W)  
 BOTTOM OF PRODUCTION ZONE: 300' FNL, 1279' FEL (SEC. 36, T9N, R61W)  
 BOTTOM HOLE LOCATION: 190' FNL, 1279' FEL (SEC. 36, T9N, R61W)
- HORNET 0136-09H**  
 SURFACE HOLE LOCATION: 2008' FSL, 514' FWL (SEC. 6, T8N, R60W)  
 LANDING POINT: 300' FSL, 330' FEL (SEC. 1, T8N, R61W)  
 BOTTOM OF PRODUCTION ZONE: 300' FNL, 330' FEL (SEC. 36, T9N, R61W)  
 BOTTOM HOLE LOCATION: 190' FNL, 330' FEL (SEC. 36, T9N, R61W)

**WELL PAD - HORNET 0136**

**DIRECTIONAL WELL PLAT (ECMC) / MULTI-WELL PLAN (OGED)**  
**HORNET 0136-01H,**  
**HORNET 0136-02H, HORNET 0136-03H,**  
**HORNET 0136-04H, HORNET 0136-05H,**  
**HORNET 0136-06H, HORNET 0136-07H,**  
**HORNET 0136-08H & HORNET 0136-09H**  
 LOCATED IN SECTION 6, T8N, R60W, SECTION 1, T8N, R61W  
 & SECTION 36, T9N, R61W, 6TH P.M.  
 WELD COUNTY, COLORADO

- NOTES:**
1. ▲ INDICATES SECTION CORNER.
  2. ● INDICATES CALCULATED CORNER.
  3. BASIS OF BEARINGS DERIVED FROM COLORADO COORDINATE SYSTEM OF 1983, NORTH ZONE.
  4. ALL MEASURED DISTANCES ARE GRID.  
 COMBINED SCALE FACTOR: .99975199 CALCULATED FROM THE W. 1/4. CORNER OF SECTION 6, T8N, R60W.
  5. WELL FOOTAGES ARE MEASURED AT RIGHT ANGLES TO THE SECTION LINES.



**LOVELAND OFFICE**  
 6706 North Franklin Avenue  
 Loveland, Colorado 80538  
 Phone 970-776-4331

**SHERIDAN OFFICE**  
 1095 Saberton Avenue  
 Sheridan, Wyoming 82801  
 Phone 307-674-0609

**VERDAD RESOURCES**

1125 17th Street, Suite 550  
 Denver, Colorado 80202

DRAFTED BY:	SJM	CHECKED BY:	RKF
DATE DRAFTED:	2/7/24	DATE SURVEYED:	4/3/24
REVISED:	4/19/24	FILE NAME:	23-145

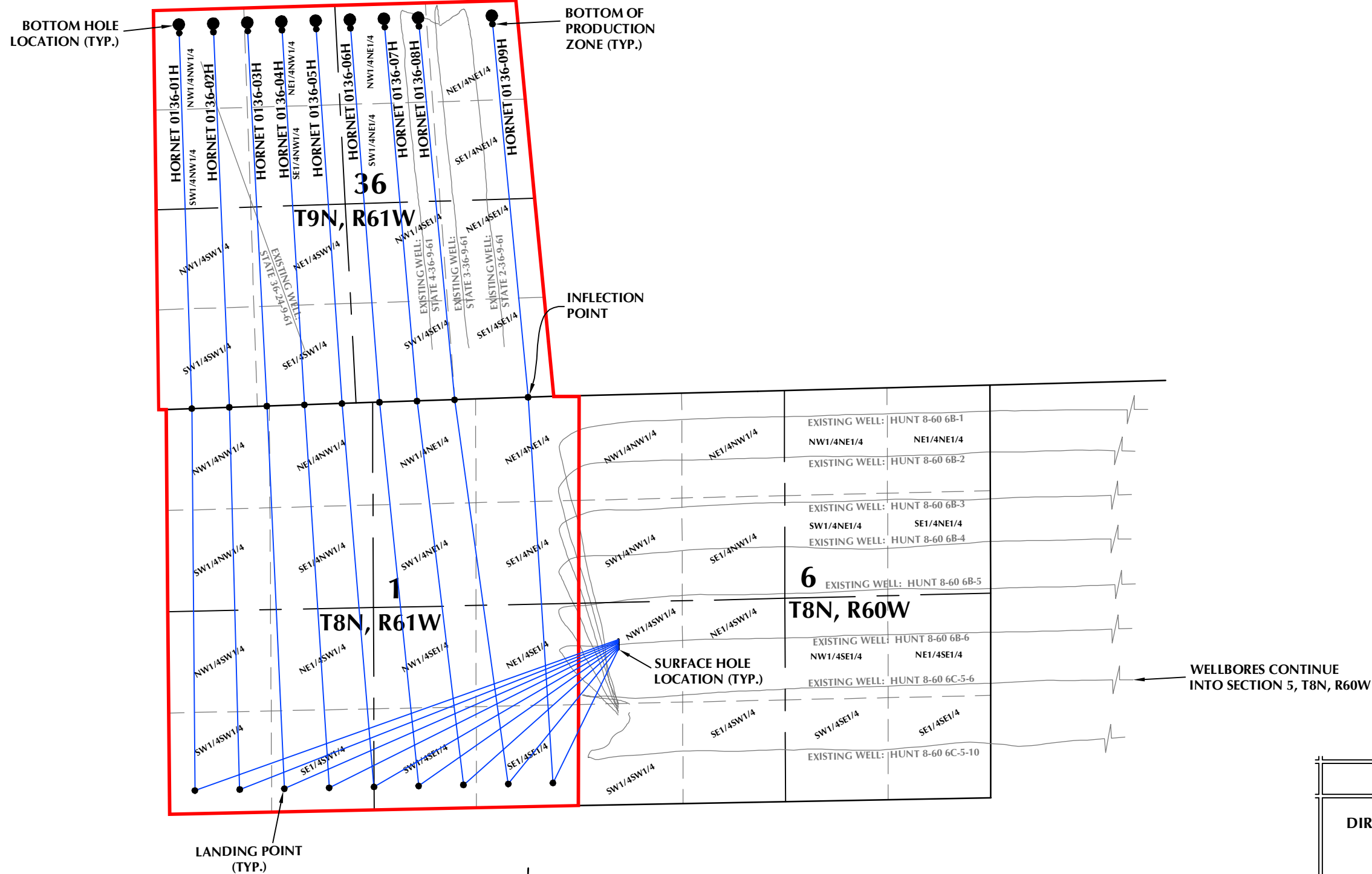
1A

SHEET NO:  
1A OF 1

K:\VERDAD\2023\_1\_45\_HUNT\_T8N\_R60W\_SEC\_6P1ATS\HORNET.DWG, 4/19/2024, 12:57:53 PM, ssundberg

# DIRECTIONAL WELL PLAT (ECMC) / MULTI-WELL PLAN (OGED)

## SECTION 6, T8N, R60W, SECTION 1, T8N, R61W & SECTION 36, T9N, R61W, 6TH P.M.

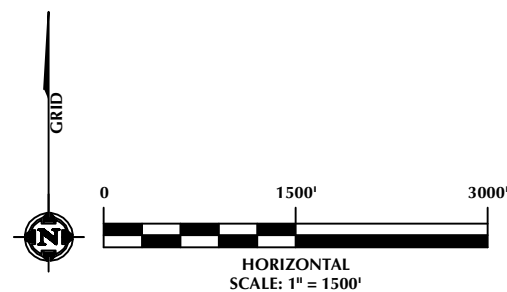


WELLBORES CONTINUE INTO SECTION 5, T8N, R60W

### WELL PAD - HORNET 0136

DIRECTIONAL WELL PLAT (ECMC) / MULTI-WELL PLAN (OGED)  
 HORNET 0136-01H,  
 HORNET 0136-02H, HORNET 0136-03H,  
 HORNET 0136-04H, HORNET 0136-05H,  
 HORNET 0136-06H, HORNET 0136-07H,  
 HORNET 0136-08H & HORNET 0136-09H  
 LOCATED IN SECTION 6, T8N, R60W, SECTION 1, T8N, R61W  
 & SECTION 36, T9N, R61W, 6TH P.M.  
 WELD COUNTY, COLORADO

- LEGEND:**
- DSU BOUNDARY
  - WELLBORE TRAJECTORY
  - EXISTING WELLBORE
  - LANDING POINT/INFLECTION POINT/BOTTOM OF PRODUCTION ZONE
  - BOTTOM HOLE LOCATION



**LOVELAND OFFICE**  
 6706 North Franklin Avenue  
 Loveland, Colorado 80538  
 Phone 970-776-4331

**SHERIDAN OFFICE**  
 1095 Saberton Avenue  
 Sheridan, Wyoming 82801  
 Phone 307-674-0609

**CONSULTING, LLC**

1125 17th Street, Suite 550  
 Denver, Colorado 80202

DRAFTED BY:	SJM	CHECKED BY:	RKF	<b>1B</b> 1B OF 1
DATE DRAFTED:	2/7/24	DATE SURVEYED:	4/3/24	
REVISED:	4/19/24	FILE NAME:	23-145	

K:\VERDAD\2023\_145\_HUNT\_T8N\_R60W\_SEC\_6P\PLATSHORNET.dwg, 4/19/2024, 12:58:07 PM, ssundberg